

This document may be reproduced upon request in an alternative format by contacting the County ADA Coordinator (772) 320-3131, the County Administration Office (772) 288-5400, Florida Relay 711, or by completing our accessibility feedback from at www.martin.fl.us/accessibility-feedback

**BEFORE THE BOARD OF COUNTY COMMISSIONERS
MARTIN COUNTY, FLORIDA**

RESOLUTION NUMBER 25-_____

**CORRECTION OF A SCRIVENER'S MAPPING ERROR ON THE FUTURE LAND USE MAP FOR
ABANDONED RIGHT OF WAY LOCATED ON THE SAINT LUCIE INLET FARMS AND PALM
CITY FARMS PLAT MAPS**

WHEREAS, on September 22, 1970, the Board of County Commissioners adopted a resolution abandoning Right-of-Way in the Saint Lucie Inlet Farms Plat and the Palm City Farms Plat; and

WHEREAS, on April 1, 1982, the Board of County Commissioners adopted Ordinance #189, adopting the Future Land Use Map as an exhibit to Martin County Comprehensive Plan; and

WHEREAS, on February 20, 1990, the Board of County Commissioners adopted Ordinance #373, adopting the Future Land Use Map as an exhibit to the Martin County Comprehensive Growth Management Plan; and

WHEREAS, on December 7, 2004, the Board of County Commissioners adopted Ordinance 658, adopting the Geographic Information Systems in digital format for the Future Land Use Map; and

WHEREAS, the Board of County Commissioners has determined that a scrivener's error occurred on the Future Land Use Map that was transferred to the Geographic Information Systems (GIS) Future Land Use Map affecting previously abandoned Right-of-Way on portions of property located north of SW 96th Street, east of SW Citrus Boulevard, south of Interstate 95, and west of the Florida Turnpike; and

WHEREAS, the Growth Management Department has reviewed documents confirming Right-of-Way was abandoned prior to the adoption of the 1982 Future Land Use Map and the assignment of the Agricultural Ranchette future land use designation.

NOW, THEREFORE, BE IT RESOLVED BY THE BOARD OF COMMISSIONERS OF MARTIN COUNTY, FLORIDA, THAT:

The Future Land Use Map of the Martin County Comprehensive Growth Management Plan is hereby corrected and the Agricultural Ranchette future land use designation shall be shown on the abandoned Right-of-Ways described in Exhibit A and B.

DULY PASSED AND ADOPTED THIS 12th DAY OF AUGUST 2025.

ATTEST:

BOARD OF COUNTY COMMISSIONERS
MARTIN COUNTY, FLORIDA

BY: _____
CAROLYN TIMMANN
CLERK OF THE CIRCUIT COURT
AND COMPTROLLER

BY: _____
SARAH HEARD, CHAIR

APPROVED AS TO FORM AND
LEGAL SUFFICIENCY:

BY: _____
ELYSSE A. ELDER
ACTING COUNTY ATTORNEY

EXHIBIT A - PROPOSED FUTURE LAND USE MAP CORRECTION

Map of the Abandoned Right-of-Ways (ROW) to be corrected with the Agricultural Ranchette Future Land Use and more particularly described in Exhibit B.

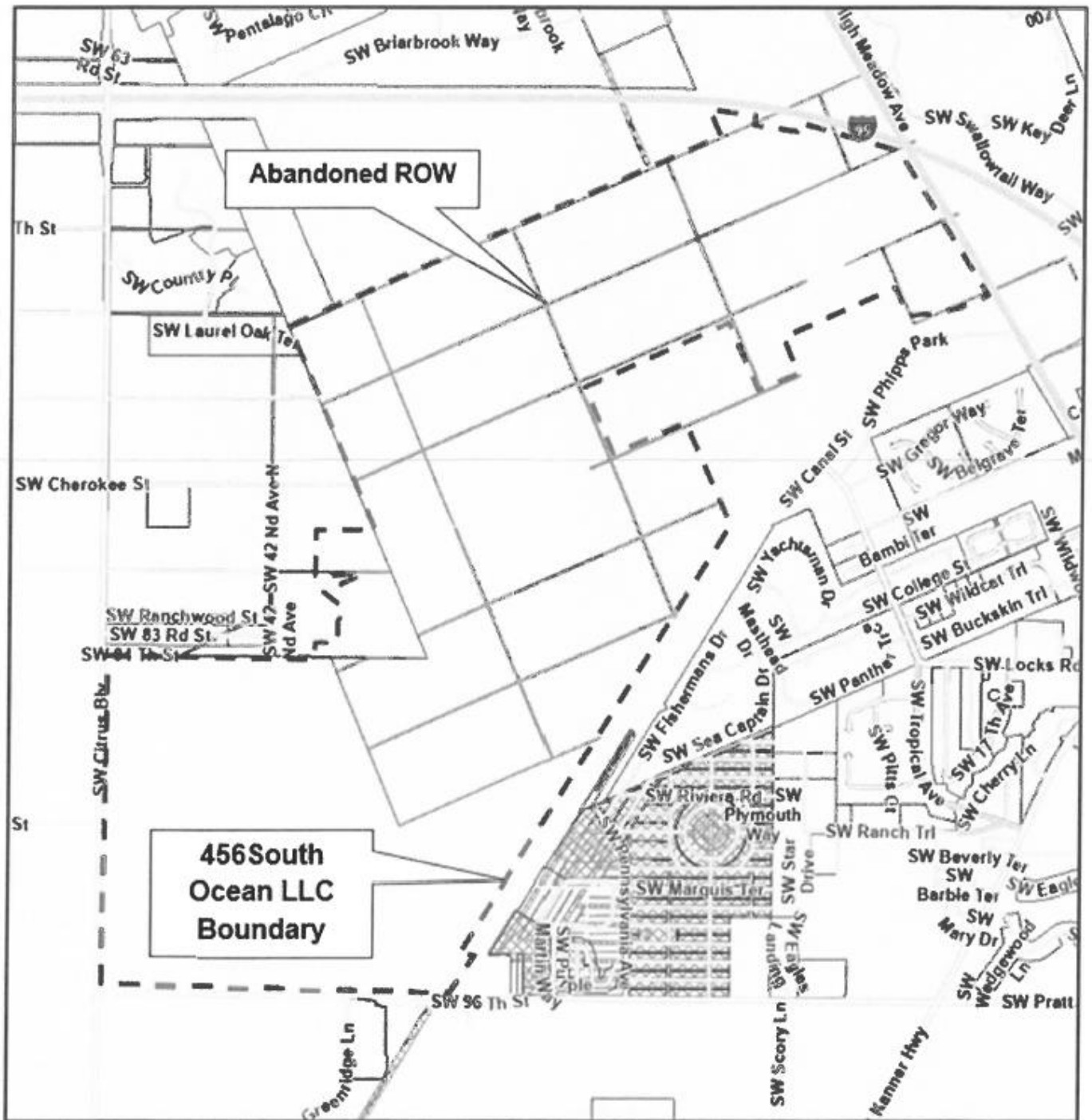


EXHIBIT B – ORIGINAL RESOLUTION, DATED SEPTEMBER 22, 1970

Legal Description of Abandoned Right-of-Ways to be corrected on the FLUM.

NOTICE OF CLOSING ROAD RIGHT OF WAY

NOTICE IS HEREBY GIVEN that following a duly advertised public hearings held on August 11, 1970 and September 8, 1970 at 9:00 A. M. in the County Courthouse in Stuart, Florida, the Board of County Commissioners of Martin County, Florida adopted a Resolution closing, vacating and abandoning insofar as the rights of Martin County and the public in and to the same are concerned, the following road right of way:

In ST. LUCIE INLET FARMS a 15 foot dedication from the West boundary on the North side of Tract 2 of Block 1 East to the Sunshine State Parkway; and

a 30 foot dedication from the West boundary between Tract 7 of Block 1 and Tract 2 of Block 2 East to the Sunshine State Parkway, excluding the North 15 feet bordering on Tract 1 and 2 in Block 23 and Tract 4 in Block 26; and

a 30 foot dedication from the West boundary between Tract 7 of Block 2 and Tract 2 of Block 3 East to Sunshine State Parkway, excluding the South 15 feet bordering on Tract 8 of Block 23 and Tract 5 of Block 26 and all of the dedication between Tract 7 of Block 23 and Tract 2 of Block 22; and

a 30 foot dedication lying between Tract 5 of Block 4 and Tract 4 of Block 5, then picking up again on the West end of Tract 7 of Block 4 and Tract 2 of Block 5 East to the U.S. Government land; and

a 30 foot dedication on the West boundary between Tract 5 of Block 5 and Tract 4 of Block 6 East to the St. Lucie Canal; and

a 15 foot dedication from the West boundary on the South side of Tract 5 of Block 6 East to the St. Lucie Canal; and

a 15 foot dedication from the North boundary on the West side of Tract 5 of Block 4 South to the South boundary of Tract 5 of Block 6; and

a 30 foot dedication from the North boundary lying between Tract 1 of Block 1 and Tract 4 of Block 12 South to the Southern boundary of Tract 8 of Block 6 and Tract 5 of Block 7; and

a 30 foot dedication from the North boundary between Tract 1 of Block 12 and Tract 4 of Block 13 South to the St. Lucie Canal; and

a 30 foot dedication from the North boundary between Tract 1 of Block 13 and Tract 4 of Block 24 South to the U.S. Government land; and

a 30 foot dedication from the North boundary between Tract 1 of Block 24 and Tract 4 of Block 25 South to the Southern boundary of Tract 8 of Block 24 and Tract 5 of Block 25; and

a 30 foot dedication between Tract 1 of Block 22 and Tract 4 of Block 27; and

a 15 foot dedication on the West side of Tract 5 of Block 27; and
 a 15 foot dedication on the South side of Tract 5 and 6 of Block 27; and
 a 30 foot dedication from the West boundary on the North side of Tract 2 of Block 1 East to the Sunshine State Parkway; and
 a 30 foot dedication from the West boundary on the South side of Tract 5 of Block 6 East to the St. Lucie Canal; and
 a 30 foot dedication from the North boundary on the West side of Tract 5 of Block 4 South to the South boundary of Tract 5 of Block 6; and
 a 30 foot dedication from the East end of Hog Creek Ditch where it turns to a Southeast direction lying somewhere between Tract 8 of Block 10 and Tract 1 of Block 9, thence going East to the Eastern boundary of Tract 6 in Block 15, and Tract 3 of Block 16; and
 a 15 foot dedication from the West boundary on the South side of Tract 7 of Block 15 to the East boundary of Tract 5 of Block 22; and
 IN PALM CITY FARMS a 30 foot dedication from Hog Creek Ditch on the North and running South to the Southern end of Tracts 52 and 53; and
 a 15 foot dedication from the West boundary of Tract 46 on the South side running East to Hog Creek Ditch; and
 a 30 foot dedication from Hog Creek Ditch on the West to St. Lucie Inlet Farms on the East running between Tracts 46 and 47 on the North and Tract 50 and 51 on the South; and
 a 30 foot dedication from the West boundary of Tract 62 to the East boundary of Tract 64 on the South side.

DATED this 22nd day of September, 1970.

ATTEST:

Dorothy Pierce
 Dorothy Pierce, Clerk

BOARD OF COUNTY COMMISSIONERS
OF MARTIN COUNTY, FLORIDA

William E. Owens
 William E. Owens, Chairman

(County Commission Seal)

PUBLISH: October 15, 1970



BOOK 314 PAGE 413