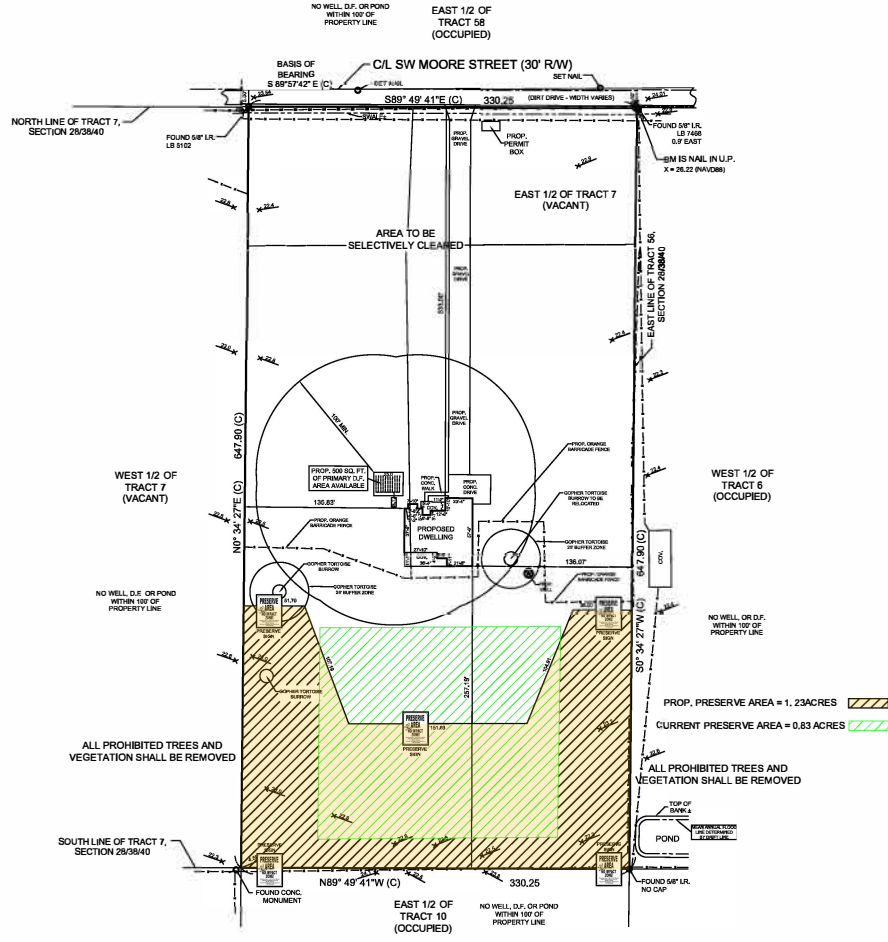


**PRESERVE AREAS ARE NOT TO BE ALTERED WITHOUT WRITTEN PERMISSION FROM THE MARTIN COUNTY BOARD OF COUNTY COMMISSIONERS**



LAND CLEARING PLAN

**LEGAL DESCRIPTION** (As furnished by client)  
THE EAST ONE-HALF (½) OF TRACT 7, SECTION 28 SOUTH, TOWNSHIP 38 SOUTH, RANGE 40 EAST, PALM CITY FARMS, ACCORDING TO THE PLAT THEREOF, RECORDED IN PLAT BOOK 6, PAGE 42, OF THE PUBLIC RECORDS OF PALM BEACH COUNTY, NOW MARTIN COUNTY, FLORIDA.  
TRACT CONTAINS 213963.58 SQUARE FEET OR 4.91 ACRES±.  
4.91 ACRES X 25% = 1.23 ACRES±.  
  
Digitally signed by **CHRISTOPHER R GAILEY**  
Date: 2024.09.30 16:06:13 -04'00'

- NOTES:**  
1. PARCEL FALLS IN FEMA FLOOD ZONE AE, X-03, AND 0.2 PCT ANNUAL CHANCE FLOOD HAZARD, PER FEMA FLOOD MAP 12065C0140H EFFECTIVE 02/16/2020.  
2. WRITTEN DIMENSIONS TAKE PRECEDENT OVER SCALED DIMENSIONS. DISTANCES ARE NOT TO BE SCALED FOR CONSTRUCTION AND/OR DESIGN PURPOSES.  
3. FIELD MEASUREMENTS, PLAT MEASUREMENTS AND DEED MEASUREMENTS ARE CONCURRENT UNLESS OTHERWISE SPECIFICALLY STATED ON THIS SURVEY.  
4. NO UNDERGROUND INSTALLATIONS OR IMPROVEMENTS HAVE BEEN LOCATED AS PART OF THIS SURVEY, UNLESS SHOWN OR MADE NOTE OF HEREON.  
5. NO INSTRUMENTS OF RECORD REFLECTING EASEMENTS, RIGHTS-OF-WAY AND/OR OWNERSHIP HAVE BEEN FURNISHED THIS SURVEYOR, EXCEPT AS SHOWN.  
6. ENCROACHMENTS, IF ANY ARE SHOWN HEREON.  
7. BEARING SHOWN HEREON REFER TO THE RECORDED PLAT AS STATED IN DESCRIPTION ABOVE.  
8. CENTERLINE OF SW MOORE STREET HAS A PLAT BEARING OF S 89°57'42" E (C) AND ALL OTHER BEARINGS SHOWN HEREON REFER THERETO.  
9. ELEVATIONS, IF ANY, SHOWN HEREON REFER TO NORTH AMERICAN VERTICAL DATUM (1988) WHERE MEAN HIGH SEA LEVEL IS 950, UNLESS OTHERWISE NOTED.  
10. THIS SURVEY IS NOT TRANSFERABLE BY OWNERS AFFIDAVIT OF SURVEY OR SIMILAR INSTRUMENT.  
11. THIS SURVEY IS VALID IN ACCORDANCE WITH F.S. § 627.94(2), FOR A PERIOD OF 90 DAYS FROM THE DATE OF CERTIFICATION.  
12. THIS SURVEY MEETS PRECISION REQUIREMENTS FOR SUBURBAN SURVEYS, RELATIVE PRECISION IS GREATER THAN 1 FOOT IN 7500 FEET.  
13. ADDITIONS OR DELETIONS TO THIS SURVEY, MAKING REPORT BY OTHER THAN THE SIGNING PARTY OR PARTIES IS PROHIBITED WITHOUT WRITTEN CONSENT OF THE SIGNING PARTY OR PARTIES.  
14. FACT WALD WITHOUT THE SIGNATURE AND THE ORIGINAL RAISED SEAL, OR THIRD PARTY VERIFIED DIGITAL SIGNATURE OF A FLORIDA LICENSED SURVEYOR AND MAPPER.  
15. TORTOSE BURROW LOCATIONS ESTABLISHED BY PLATWOODS ENVIRONMENTAL, INC. THIS OFFICE DID NOT LOCATE ANY TORTOSE BURROWS ON-SITE.

**LEGEND:**

AC	AIR CONDITIONING PAD	IR	IRIG BUCK
AD	ADDITIONAL DRILLING	PC	POINT OF BEGINNING
AE	ASBESTOS	PCN	POINT OF COMMENCEMENT
AF	ASBESTOS BRIDGE	PCO	POINT OF CURVATURE
AG	ASBESTOS BRIDGE	PL	PLASTER
AH	ASBESTOS BRIDGE	PLO	PURCHASER
AI	ASBESTOS BRIDGE	POL	POLYURETHANE
AJ	ASBESTOS BRIDGE	PP	PROPOSED
AK	ASBESTOS BRIDGE	PPL	PROPOSED CONCRETE PIPE
AL	ASBESTOS BRIDGE	PS	PROPOSED FIELD MEASUREMENT
AM	ASBESTOS BRIDGE	PT	PROPOSED TRENCH
AN	ASBESTOS BRIDGE	PU	PROPOSED UTILITY
AO	ASBESTOS BRIDGE	PV	PROPOSED VALVE
AP	ASBESTOS BRIDGE	PW	PROPOSED WELL
AQ	ASBESTOS BRIDGE	PX	PROPOSED WOOD FENCE
AR	ASBESTOS BRIDGE	RY	PROPOSED WOOD FENCE
AS	ASBESTOS BRIDGE	RZ	PROPOSED WOOD FENCE
AT	ASBESTOS BRIDGE	S	SETBACK
AV	ASBESTOS BRIDGE	S1	SEWER
AW	ASBESTOS BRIDGE	S2	SEWER
AX	ASBESTOS BRIDGE	S3	SEWER
AY	ASBESTOS BRIDGE	S4	SEWER
AZ	ASBESTOS BRIDGE	S5	SEWER
BA	ASBESTOS BRIDGE	S6	SEWER
BB	ASBESTOS BRIDGE	S7	SEWER
BC	ASBESTOS BRIDGE	S8	SEWER
BD	ASBESTOS BRIDGE	S9	SEWER
BE	ASBESTOS BRIDGE	S0	SEWER
BF	ASBESTOS BRIDGE	S1	SEWER
BG	ASBESTOS BRIDGE	S2	SEWER
BH	ASBESTOS BRIDGE	S3	SEWER
BI	ASBESTOS BRIDGE	S4	SEWER
BJ	ASBESTOS BRIDGE	S5	SEWER
BK	ASBESTOS BRIDGE	S6	SEWER
BL	ASBESTOS BRIDGE	S7	SEWER
BM	ASBESTOS BRIDGE	S8	SEWER
BN	ASBESTOS BRIDGE	S9	SEWER
BO	ASBESTOS BRIDGE	S0	SEWER
BP	ASBESTOS BRIDGE	S1	SEWER
BQ	ASBESTOS BRIDGE	S2	SEWER
BR	ASBESTOS BRIDGE	S3	SEWER
BS	ASBESTOS BRIDGE	S4	SEWER
BT	ASBESTOS BRIDGE	S5	SEWER
BU	ASBESTOS BRIDGE	S6	SEWER
BV	ASBESTOS BRIDGE	S7	SEWER
BW	ASBESTOS BRIDGE	S8	SEWER
BX	ASBESTOS BRIDGE	S9	SEWER
BY	ASBESTOS BRIDGE	S0	SEWER
BZ	ASBESTOS BRIDGE	S1	SEWER
CA	ASBESTOS BRIDGE	S2	SEWER
CB	ASBESTOS BRIDGE	S3	SEWER
CC	ASBESTOS BRIDGE	S4	SEWER
CD	ASBESTOS BRIDGE	S5	SEWER
CE	ASBESTOS BRIDGE	S6	SEWER
CF	ASBESTOS BRIDGE	S7	SEWER
CG	ASBESTOS BRIDGE	S8	SEWER
CH	ASBESTOS BRIDGE	S9	SEWER
CI	ASBESTOS BRIDGE	S0	SEWER
CJ	ASBESTOS BRIDGE	S1	SEWER
CK	ASBESTOS BRIDGE	S2	SEWER
CL	ASBESTOS BRIDGE	S3	SEWER
CM	ASBESTOS BRIDGE	S4	SEWER
CN	ASBESTOS BRIDGE	S5	SEWER
CO	ASBESTOS BRIDGE	S6	SEWER
CP	ASBESTOS BRIDGE	S7	SEWER
CQ	ASBESTOS BRIDGE	S8	SEWER
CR	ASBESTOS BRIDGE	S9	SEWER
CS	ASBESTOS BRIDGE	S0	SEWER
CT	ASBESTOS BRIDGE	S1	SEWER
CU	ASBESTOS BRIDGE	S2	SEWER
CV	ASBESTOS BRIDGE	S3	SEWER
CW	ASBESTOS BRIDGE	S4	SEWER
CX	ASBESTOS BRIDGE	S5	SEWER
CY	ASBESTOS BRIDGE	S6	SEWER
CZ	ASBESTOS BRIDGE	S7	SEWER
DA	ASBESTOS BRIDGE	S8	SEWER
DB	ASBESTOS BRIDGE	S9	SEWER
DC	ASBESTOS BRIDGE	S0	SEWER
DD	ASBESTOS BRIDGE	S1	SEWER
DE	ASBESTOS BRIDGE	S2	SEWER
DF	ASBESTOS BRIDGE	S3	SEWER
DG	ASBESTOS BRIDGE	S4	SEWER
DH	ASBESTOS BRIDGE	S5	SEWER
DI	ASBESTOS BRIDGE	S6	SEWER
DJ	ASBESTOS BRIDGE	S7	SEWER
DK	ASBESTOS BRIDGE	S8	SEWER
DL	ASBESTOS BRIDGE	S9	SEWER
DM	ASBESTOS BRIDGE	S0	SEWER
DN	ASBESTOS BRIDGE	S1	SEWER
DO	ASBESTOS BRIDGE	S2	SEWER
DP	ASBESTOS BRIDGE	S3	SEWER
DQ	ASBESTOS BRIDGE	S4	SEWER
DR	ASBESTOS BRIDGE	S5	SEWER
DS	ASBESTOS BRIDGE	S6	SEWER
DT	ASBESTOS BRIDGE	S7	SEWER
DU	ASBESTOS BRIDGE	S8	SEWER
DV	ASBESTOS BRIDGE	S9	SEWER
DW	ASBESTOS BRIDGE	S0	SEWER
DX	ASBESTOS BRIDGE	S1	SEWER
DY	ASBESTOS BRIDGE	S2	SEWER
DZ	ASBESTOS BRIDGE	S3	SEWER
EA	ASBESTOS BRIDGE	S4	SEWER
EB	ASBESTOS BRIDGE	S5	SEWER
EC	ASBESTOS BRIDGE	S6	SEWER
ED	ASBESTOS BRIDGE	S7	SEWER
EE	ASBESTOS BRIDGE	S8	SEWER
EF	ASBESTOS BRIDGE	S9	SEWER
EG	ASBESTOS BRIDGE	S0	SEWER
EH	ASBESTOS BRIDGE	S1	SEWER
EI	ASBESTOS BRIDGE	S2	SEWER
EJ	ASBESTOS BRIDGE	S3	SEWER
EK	ASBESTOS BRIDGE	S4	SEWER
EL	ASBESTOS BRIDGE	S5	SEWER
EM	ASBESTOS BRIDGE	S6	SEWER
EN	ASBESTOS BRIDGE	S7	SEWER
EO	ASBESTOS BRIDGE	S8	SEWER
EP	ASBESTOS BRIDGE	S9	SEWER
EQ	ASBESTOS BRIDGE	S0	SEWER
ER	ASBESTOS BRIDGE	S1	SEWER
ES	ASBESTOS BRIDGE	S2	SEWER
ET	ASBESTOS BRIDGE	S3	SEWER
EU	ASBESTOS BRIDGE	S4	SEWER
EV	ASBESTOS BRIDGE	S5	SEWER
EW	ASBESTOS BRIDGE	S6	SEWER
EX	ASBESTOS BRIDGE	S7	SEWER
EY	ASBESTOS BRIDGE	S8	SEWER
EZ	ASBESTOS BRIDGE	S9	SEWER
FA	ASBESTOS BRIDGE	S0	SEWER
FB	ASBESTOS BRIDGE	S1	SEWER
FC	ASBESTOS BRIDGE	S2	SEWER
FD	ASBESTOS BRIDGE	S3	SEWER
FE	ASBESTOS BRIDGE	S4	SEWER
FF	ASBESTOS BRIDGE	S5	SEWER
FG	ASBESTOS BRIDGE	S6	SEWER
FH	ASBESTOS BRIDGE	S7	SEWER
FI	ASBESTOS BRIDGE	S8	SEWER
FJ	ASBESTOS BRIDGE	S9	SEWER
FK	ASBESTOS BRIDGE	S0	SEWER
FL	ASBESTOS BRIDGE	S1	SEWER
FM	ASBESTOS BRIDGE	S2	SEWER
FN	ASBESTOS BRIDGE	S3	SEWER
FO	ASBESTOS BRIDGE	S4	SEWER
FP	ASBESTOS BRIDGE	S5	SEWER
FQ	ASBESTOS BRIDGE	S6	SEWER
FR	ASBESTOS BRIDGE	S7	SEWER
FS	ASBESTOS BRIDGE	S8	SEWER
FT	ASBESTOS BRIDGE	S9	SEWER
FU	ASBESTOS BRIDGE	S0	SEWER
FV	ASBESTOS BRIDGE	S1	SEWER
FW	ASBESTOS BRIDGE	S2	SEWER
FX	ASBESTOS BRIDGE	S3	SEWER
FY	ASBESTOS BRIDGE	S4	SEWER
FZ	ASBESTOS BRIDGE	S5	SEWER
GA	ASBESTOS BRIDGE	S6	SEWER
GB	ASBESTOS BRIDGE	S7	SEWER
GC	ASBESTOS BRIDGE	S8	SEWER
GD	ASBESTOS BRIDGE	S9	SEWER
GE	ASBESTOS BRIDGE	S0	SEWER
GF	ASBESTOS BRIDGE	S1	SEWER
GG	ASBESTOS BRIDGE	S2	SEWER
GH	ASBESTOS BRIDGE	S3	SEWER
GI	ASBESTOS BRIDGE	S4	SEWER
GJ	ASBESTOS BRIDGE	S5	SEWER
GK	ASBESTOS BRIDGE	S6	SEWER
GL	ASBESTOS BRIDGE	S7	SEWER
GM	ASBESTOS BRIDGE	S8	SEWER
GN	ASBESTOS BRIDGE	S9	SEWER
GO	ASBESTOS BRIDGE	S0	SEWER
GP	ASBESTOS BRIDGE	S1	SEWER
GQ	ASBESTOS BRIDGE	S2	SEWER
GR	ASBESTOS BRIDGE	S3	SEWER
GS	ASBESTOS BRIDGE	S4	SEWER
GT	ASBESTOS BRIDGE	S5	SEWER
GU	ASBESTOS BRIDGE	S6	SEWER
GV	ASBESTOS BRIDGE	S7	SEWER
GW	ASBESTOS BRIDGE	S8	SEWER
GX	ASBESTOS BRIDGE	S9	SEWER
GY	ASBESTOS BRIDGE	S0	SEWER
GA	ASBESTOS BRIDGE	S1	SEWER

**TRIANGLE**  
Land Surveying, Inc.  
Surveying to Specification  
LB # 2592

4700 Royal Palm  
Beach Boulevard  
W. Palm Beach, FL 33411  
561.736.3868 (phone)  
561.731-8777 (fax)  
Merple2592@gmail.com

**CERTIFIED TO:**  
NEW INSURETY AND DAILY BILLCOPY  
SYNERGY TITLE, LLC  
COMMONWEALTH LAND TITLE INSURANCE COMPANY  
MIDFLORIDA CREDIT UNION, BACAMTRIA

FIELD DATE: AUGUST 1, 2024  
SCALE: 1"=50'  
REVIEW BY: EST/242PM  
DRAWN BY: CFC  
JOB ORDER NO.: 26183  
CRG-HDW