

East Fork Creek Phase II Stormwater Treatment Area Revised 05/20/2025

Category Non-Concurrency
Project Number 124918
Location South County
District 3

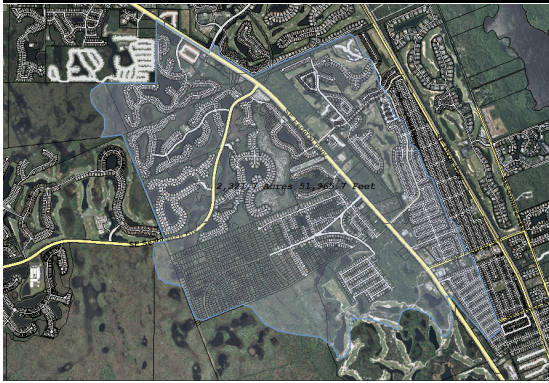
Project Limits Located on the west and north side of Heritage Ridge, east of Federal Hwy on the south side of Mariner's Sands

Related Projects N/A
Lead Dept/Division Public Works/Ecosystems
Year Project Initiated 1980



Project Life Cycle 50 Years

Resilience Requirements ☒ 2040 Vulnerability ☒ 2070 Vulnerability ☒ 2100 Vulnerability



DESCRIPTION

The East Fork Creek basin contains portions of Heritage Ridge, Seabranh and Poinciana Gardens. Phase II of this project includes a 700-foot-long STA/1500-foot long lake within an unopened right-of-way. Phase I included a 20-acre STA/ stormwater pond on the east side of US1 and replacing two cart crossings and culverts. The primary objective of the project is to reduce nutrient loads of Total Phosphorus (TP) by an estimated 57%, Total Nitrogen (TN) by 28%, and Total Suspended Solids by 80% to the St. Lucie Estuary, and assists the County in meeting the Total Maximum Daily Load (TMDL).

BACKGROUND

Funding is programmed with Ad Valorem and designated ARPA funds for strowmwater impropvements. The County recently applied for \$600,000 from the Florida Department of Environmental Protection through the FY24 State Water Quality Assistance Grant Program (SWAG).

PROJECT ORIGINATION

Mandates

JUSTIFICATION

The project is needed to help the County meet Total Maximum Daily Load (TMDL) requirements for the St. Lucie Estuary, including reduction in Total Phosphorus (TP) and Total Nitrogen (TN).

Expenditures	Total	To Date		Funded					Unfunded
				FY24	FY25	FY26	FY27	FY28	FY29-FY33
Construction	2,196,837	1,928,179		268,658					
Expenditure Total	2,196,837	1,928,179		268,658	0	0	0	0	0
Revenues	Total	To Date	Carryover	FY24	FY25	FY26	FY27	FY28	FY29-FY33
Ad Valorem	412,266	338,518	73,748						
Grant	1,100,000	1,100,000							
Stormwater MSTU	239,661	239,661							
Contribution	194,910			194,910					
Impact Fees	250,000	250,000							
Revenue Total	2,196,837	1,928,179	73,748	194,910	0	0	0	0	0
Total Unfunded									0

OPERATING BUDGET IMPACT

Typically, annual maintenance costs for a Stormwater Treatment Area are approximately \$1000 - \$1200 / year / acre. The estimated operating and maintenance costs associated with this Lake / STA system would be roughly \$25,000/year.