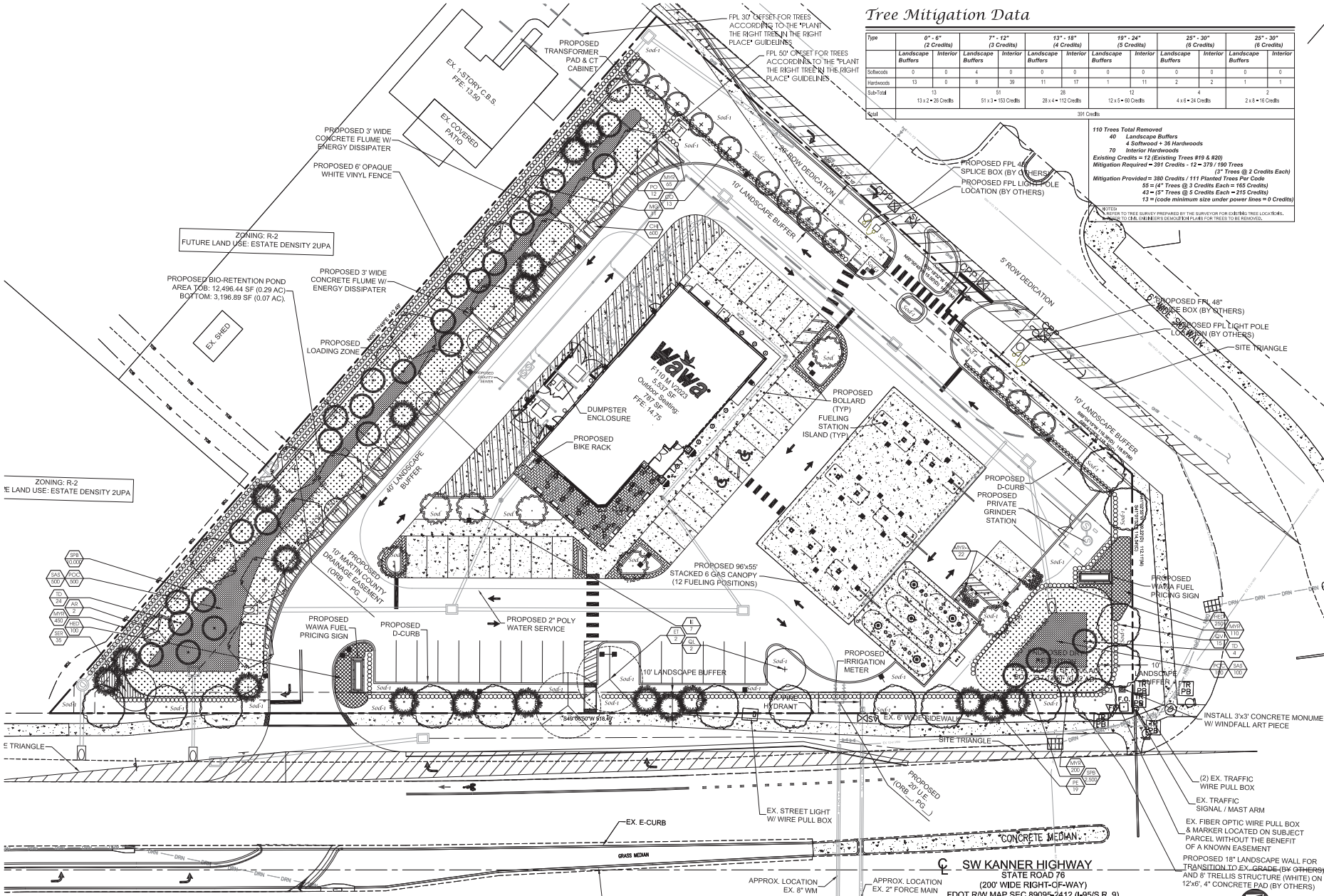


**Tree Mitigation Data**

Type	0' - 6" (2 Credits)		7' - 12" (3 Credits)		13' - 18" (4 Credits)		19' - 24" (5 Credits)		25' - 30" (6 Credits)		25' - 30" (6 Credits)	
	Landscape Buffers	Interior	Landscape Buffers	Interior	Landscape Buffers	Interior	Landscape Buffers	Interior	Landscape Buffers	Interior	Landscape Buffers	Interior
Softwoods	0	0	4	0	0	0	0	0	0	0	0	0
Hardwoods	13	0	8	36	11	17	1	11	2	2	1	1
Sub-Total	13	0	12	36	11	17	1	11	2	2	1	1
	13 x 2 = 26 Credits		51 x 3 = 153 Credits		28 x 4 = 112 Credits		12 x 5 = 60 Credits		4 x 6 = 24 Credits		2 x 6 = 12 Credits	
Total	391 Credits											

110 Trees Total Removed  
 Landscape Buffers  
 40 Softwood + 26 Hardwoods  
 70 Interior Hardwoods  
 Existing Credits = 12 (Existing Trees #19 & #20)  
 Mitigation Required = 391 Credits - 12 = 379 / 190 Trees (3" Trees @ 2 Credits Each)  
 Mitigation Provided = 380 Credits / 111 Planted Trees Per Code  
 56 = 14" Trees @ 3 Credits Each = 168 Credits  
 43 = 5" Trees @ 5 Credits Each = 215 Credits  
 13 = (code minimum size under power lines = 0 Credits)

NOTES:  
 REFER TO TREE SURVEY PREPARED BY THE SURVEYOR FOR IDENTIFYING TREE LOCATIONS.  
 TO BE REMOVED TO CLEAR DRIVE AND SIDEWALKS FOR LANE FOR TREES TO BE REMOVED.



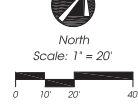
**Dry Retention Areas**

INSTALL PER MANUFACTURER'S SPECIFICATIONS 'COIR MAT 90" COCONUT MAT (OR EQUAL) TO STABILIZE THE SLOPES AND BOTTOM OF THE DRY RETENTION AREA TO PREVENT EROSION. BOTTOM OF DRY RETENTION AREA AND ALL SLOPES SHALL BE PLANTED WITH SPARTINA BAKERSII 12" ON CENTER. MAT SHALL BE ON THE BOTTOM AND SIDE SLOPES 1' PAST THE TOP OF BANK UNDER THE EQUIVANT PLANTINGS.

**General Notes**

- No plant substitutions can be made without Martin County approval.
- Where final landscape improvements must be inspected and approved by Martin County prior to the issuance of a Certificate of Occupancy.
- Any utility landscaping, soil, or irrigation damaged or destroyed during the construction shall be replaced prior to the final inspection.
- Maintain grass and St. Augustine soil 8" deep below the topsoil to provide 100% coverage and provide adequate irrigation for landscape areas for the first 4-6 growing season and continue thereafter only as necessary to maintain required vegetation in good and healthy condition. Shop drawings to be submitted by the mitigation contractor for approval prior to installation.
- Planting adjacent to fire hydrants to have a minimum clear radius of 7.5' as required by the NFPA Uniform Fire Code Florida Edition 16.3.4.1 Hydrants. All fire hydrants and fire check valves shall have a minimum of 3.0' from the front and 5.0' from the rear to all landscape installed per the Public Fire Prevention Code.

**Landscape Plan**



Job No. 24-0203  
 Drawn By JWS  
 Submittal Dates: 2-21-2024, 7-15-2024, 9-5-2024, 10-1-2024  
 Revision Dates: Comments #1 7-15-2024, New Base 9-5-2024, New Base 10-1-2024

These drawings are the property of the landscape architect and are not to be used for other projects except by written permission from the landscape architect. Report any discrepancies immediately to the landscape architect.



