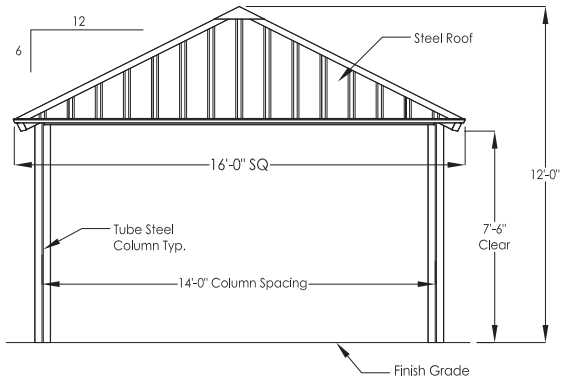






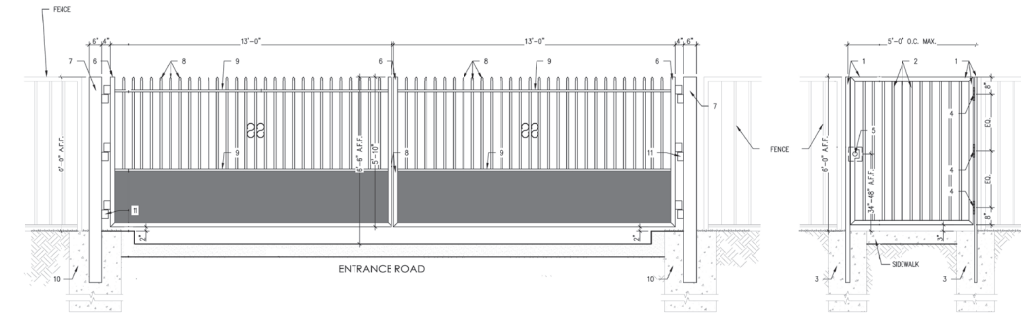
Pavilion Detail (16' x 16')

Note: Detail is representative of the general character and final permit detail shall be close in nature.



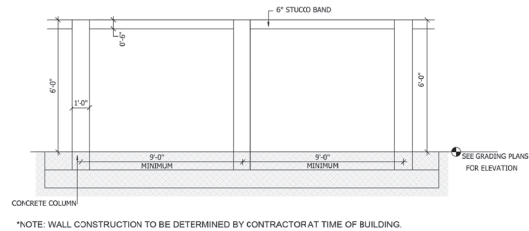
Aluminum Vehicular Entry Gate & Pedestrian Gate Typical Detail

Note: Detail is representative of the general character and final permit detail shall be close in nature.



6ft Wall Typical Detail

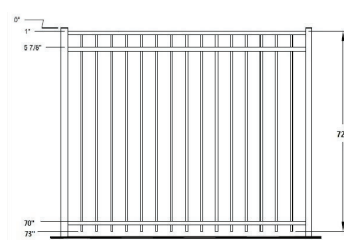
Note: Detail is representative of the general character and final permit detail shall be close in nature.



\*NOTE: WALL CONSTRUCTION TO BE DETERMINED BY CONTRACTOR AT TIME OF BUILDING.

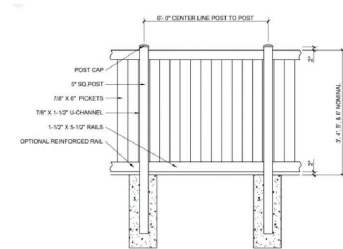
6ft Aluminum Fence Detail

Note: Detail is representative of the general character and final permit detail shall be close in nature.



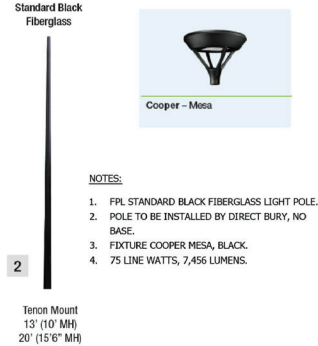
6ft Vinyl Opaque Fence Detail

Note: Detail is representative of the general character and final permit detail shall be close in nature.



On-site Street & Pedestrian Light Pole Detail

Scale: NTS



Solar Bollard Light Detail

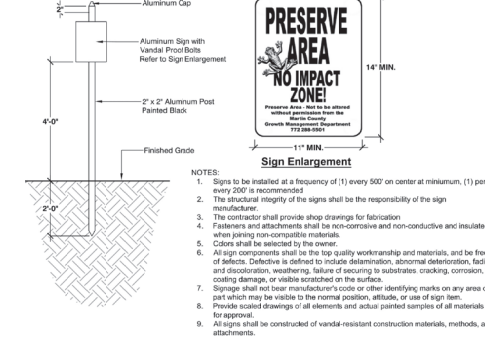
Scale: NTS



Note: Details are representative of the general character and final permit detail shall be close in nature.

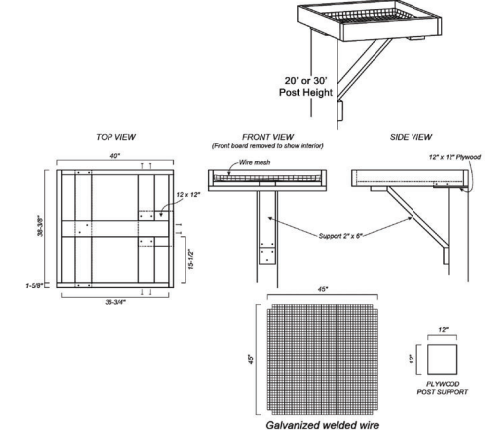
Preserve Sign Detail

Scale: NTS



Nesting Pole / Platform Typical Detail

Note: Detail is representative of the general character and final permit detail shall be close in nature.



50 E. Ocean Blvd., Suite 101  
Stuart, Florida 34994  
T 772.678.7200  
F 772.678.7201  
www.hjadesignstudio.com  
LA 0000905

95 Riverside PUD / Pulte I-95

Florida

Martin County  
Phase IV - Final Site Plan

Copyright  
The HJA Design Studio and its instruments of service to the  
landscape architect. This is not a reproduction of the  
design. All rights are reserved. All other rights are reserved.  
The HJA Design Studio and its instruments of service to the  
landscape architect. This is not a reproduction of the  
design. All rights are reserved. All other rights are reserved.

Job No. 2021-46  
Drawn By TT  
Checked By MH  
Approved By MH  
Submit Dates 4-15-22  
10-07-22 03-31-23 09-15-23  
Revision Dates XXXXXXX

SP-4