



BOYS & GIRLS CLUB OF MARTIN COUNTY THE COLE-CLARK BRANCH PLANT LIST

KEY	QTY	BOTANICAL NAME	COMMON NAME	N*	WW*	SIZE/NOTES
TREES 95% NATIVE TREES						
OL	3	Quercus laurifolia	Laurel Oak	X	X	12" H, 2 1/2" DBH
MG	4	Magnolia grandiflora	Southern Magnolia	X	X	12" H, 2 1/2" DBH
FM	11	Formosa palm	Live Oak	X	X	12" H, 2 1/2" DBH
DH	3	Diospyros	Red Maple	X	X	12" H, 2 1/2" DBH
OB	1	Onocarpus erectus	Common Buttonwood	X	X	12" H, 2 1/2" DBH
BC	3	Bursera simaruba	Gumbo Limbo	X	X	12" H, 2 1/2" DBH
MA	2	Mahonia	Bald Cypress	X	X	12" H, 2 1/2" DBH
PALMS 62% NATIVE PALMS						
FP	14	Wodyetia bifurcata	Foxtail Palm	X	X	10' C.T. Matched, B&B
MJ	8	Phoenix dactylifera	Medjool	X	X	6' C.T. Matched, B&B
SP	17	Sabal palmetto	Sabal Cabbage Palm	X	X	10' - 16' C.T. Ocean Fork
RO	9	Roystonea regia	Florida Royal Palm	X	X	6' C.T. 6-8' C.T.

* Includes 19 Sabal Palms harvested from the site.

SHRUBS 76% NATIVE SHRUBS						
CL	128	Clusia rosea	Clusia	X	X	7 Gal, 30" H
CO	165	Chrysobalanus isaco	Coccoloba 'Red Top'	X	X	7 Gal, 24" H
FM	79	Formosa palm	Dwarf Fakahatchee	X	X	7 Gal, 24" H
FB	130	Hamelis	Firebush, patens	X	X	7 Gal, 24" H
NG	122	Ilex coccinea 'Mau'	Ilex Maui Yellow	X	X	7 Gal, 24" H
IM	8	Ilex coccinea 'Mau'	Ilex Maui Yellow	X	X	7 Gal, 18" H
WV	153	Viburnum coccineum	Waller's Viburnum	X	X	7 Gal, 24" H
GA	12	Gardenia	Gardenia 'Jubilation'	X	X	7 Gal, 24" H
YH	55	Ilex vomitoria 'Dwarf'	Dwarf Yaupon Holly	X	X	7 Gal, 18" H
SH	68	Myrsine fragnans	Golden Shrimp Plant	X	X	7 Gal, 24" H
TH	19	Thunbergia	Golden Thistle	X	X	7 Gal, 24" H
VB	32	Viburnum suspensum	Sandbar Viburnum	X	X	7 Gal, 24" H
PO	165	Podocarpus microphyllus	Podocarpus	X	X	7 Gal, 24" H
FA	72	Ilex vomitoria 'Dwarf'	Dwarf Yaupon Holly	X	X	7 Gal, 24" H
SP	17	Sabal palmetto	Sabal Cabbage Palm	X	X	10' - 16' C.T. Ocean Fork
SR	2	Serenoa repens	Saw Palmetto	X	X	7 Gal, 24" H

GROUNDCOVERS / LAWN 52% NATIVE GROUNDCOVERS						
SB	1061	Spartina bakeri	Marsh Grass	X	X	1 Gal, 36" O.C.
MU	127	Muhlenbergia capillaris	Muhly Grass	X	X	3 Gal, 18" O.C.
BJ	44	Juniperus horizontalis 'Wilton'	Blue Rug Juniper	X	X	1 Gal, 16" O.C.
GA	107	Gallardia puchetta	Blanket Flower	X	X	1 Gal, 12" O.C.
LM	165	Chrysobalanus isaco	Horizontal Coco Plum	X	X	1 Gal, 16" O.C.
PJ	363	Juniperus chinensis 'Parson'	Parson's Juniper	X	X	1 Gal, 16" O.C.
SG	317	Helianthus debilis	Dwarf Sunflower	X	X	1 Gal, 16" O.C.
HF	271	Mimosa stipulacea	Powderpuff	X	X	1 Gal, 16" O.C.
SA	As shown	Stenotaphrum secundatum	St. Augustine Florant	X	X	Solid Sod
SA	As shown	Tifway 419 Bermuda Grass	Cynodon Tifway 419	X	X	Solid Sod

LANDSCAPE SPECIFICATIONS

- All plant materials shall be Florida Number 1 as provided in the most current edition of the "Grades and Standards for Nursery Plants, Parts I & II" prepared by the state Department of Agriculture and Consumer Services.
- All trees, shrubs and groundcovers shall be of the sizes as specified in the Plant List.
- Quantities listed on the Plant List are for estimating purposes. Contractor shall verify all quantities. Mulch, Topsoil, Fertilizer, etc. shall be included in the unit cost of the plants.
- Where there is a discrepancy either in quantities, plant names, sizes or specifications between the plan or Plant List, the plan takes precedence.
- All planting beds and water basins for trees shall be covered with a 3" minimum depth of shredded eucalyptus or Flomulch grade "B" or better. Refer to the Plant List for the specified mulch type. Alternative mulch material is required to be approved by Landscape Architect.
- The Planting Plan shall be installed in compliance with all existing codes and applicable deed restrictions.
- PLANTING SOIL: All trees and shrubs shall be planted with a minimum of 12" topsoil around and beneath the rootball. Minimum topsoil shall be 6" for groundcover areas.
- Planting soil to be a weed-free mixture of 50% sand and 50% mulch or other organic planting material suitable to the Landscape Architect.
- Contractor is responsible for determining all utility locations and installing facilities so as to not conflict. All damage to existing utilities or improvements caused by Contractor shall be repaired at no additional cost to the Owner.
- Contractor shall be responsible for providing final grading of all associated planting areas.
- After final grade, area to be tamped to 8" depth and all rock and foreign inorganic materials removed and disposed of properly off site.
- All planting holes to be hand dug except where machine dug holes will not adversely affect or damage utilities or improvements (see note 7).
- No plunging of any tree or palm will be accepted. All plants to be planted at the nursery grade or slightly higher.
- Contractor shall stake and guy all trees and palms at time of planting as per the appropriate detail. Contractor is responsible for the maintenance and repair of all staking and guying during the Warranty Period and removal and disposal of staking after the establishment period.
- Fertilizer is required for plantings and shall be NPK 16-4-8 at 12.5 lbs/1000 s.f. or 345 lbs/acre. Nitrogen 50% slow release form and fertilizer to include secondary/minor micronutrient.
- SUBSTITUTIONS AND CHANGES: All substitutions and changes shall be approved in writing prior to installation. Any discrepancies between plans, site and specifications shall be brought to the immediate attention of the Landscape Architect, the Owner and governing municipality.
- WATERING: All plant material shall be watered in at time of planting in accordance with standard nursery practices. In addition, Contractor will continue watering of plant material until substantial completion and as needed thereafter for a period of 5 months.
- All new plant material shall be guaranteed for 1-year from time of final acceptance of the project. Any plant material not in a healthy growing condition will be replaced by the Contractor at no additional cost to the Owner within 10 days of notification. For all replacement plant material, the warranty period shall be extended an additional 45 days beyond the original warranty period. All trees that lean or are blown over, caused by winds less than 75-MPH, will be re-set and braced by the contractor at no additional cost to the Owner.
- The successful bidder shall furnish to the Owner a unit price breakdown for all materials. The Owner may, at its discretion, add or delete from the materials utilizing the unit price breakdown submitted.
- No plant material will be accepted showing evidence of cable, chain marks, equipment scars, or otherwise damaged.
- Plant material will not be accepted when the ball of earth surrounding its roots has been cracked, broken or otherwise damaged.
- Root prune all field grown trees a minimum of 8-weeks prior to planting.

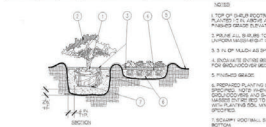
PRESERVED TREE LIST

KEY	LAT	LO	SIZE/HEALTH	SPECIES	CREDITS	S/R*
11	27.0348	-80.0808	-48.015 10 in	live oak	4	S
12	27.0348	-80.0808	-57.2 14 in	live oak	4	S
13	27.0348	-80.0808	-51.485 11 in	live oak	2	S
14	27.0348	-80.0808	-41.415 11 in	live oak	2	S
15	27.0348	-80.0808	-45.2 14 in	live oak	2	S
16	27.0348	-80.0808	-58.388 27 in	live oak	5	S
17	27.0348	-80.0808	-55.115 18 in	live oak	1	S
18	27.0348	-80.0808	-53.885 13 in	live oak	2	S
19	27.0348	-80.0808	-47.499 13 in	live oak	3	S
20	27.0348	-80.0808	-47.876 16 in	live oak	3	S
21	27.0348	-80.0808	-41.367 14 in	live oak	3	S
22	27.0348	-80.0808	-43.115 18 in	live oak	3	S
23	27.0348	-80.0808	-42.847 14 in	live oak	3	S
24	27.0348	-80.0808	-46.402 16 in	live oak	3	S
25	27.0348	-80.0808	-46.703 19 in	live oak	2	S
26	27.0348	-80.0808	-46.527 10 in	live oak	2	S
27	27.0348	-80.0808	-59.647 19 in	live oak	2	S
28	27.0348	-80.0808	-43.808 19 in	live oak	1	S
29	27.0348	-80.0808	-42.892 16 in	live oak	3	S
30	27.0348	-80.0808	-42.7 17 in	live oak	3	S
31	27.0348	-80.0808	-46.788 14 in	live oak	2	S

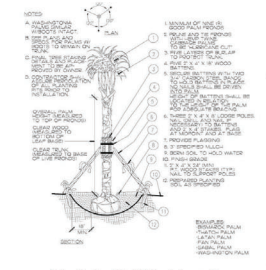
*S=SAVED, R=RELOCATED, RM=REMOVED

TREE SURVEY

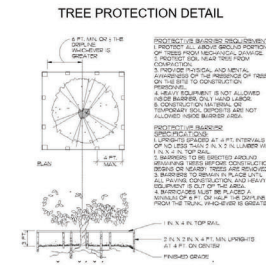
KEY	LAT	LO	SIZE/HEALTH	SPECIES	CREDITS	S/R*
1	27.0348	-80.0808	-48.015 10 in	live oak	4	S
2	27.0348	-80.0808	-57.2 14 in	live oak	4	S
3	27.0348	-80.0808	-51.485 11 in	live oak	2	S
4	27.0348	-80.0808	-41.415 11 in	live oak	2	S
5	27.0348	-80.0808	-45.2 14 in	live oak	2	S
6	27.0348	-80.0808	-58.388 27 in	live oak	5	S
7	27.0348	-80.0808	-55.115 18 in	live oak	1	S
8	27.0348	-80.0808	-53.885 13 in	live oak	2	S
9	27.0348	-80.0808	-47.499 13 in	live oak	3	S
10	27.0348	-80.0808	-47.876 16 in	live oak	3	S
11	27.0348	-80.0808	-41.367 14 in	live oak	3	S
12	27.0348	-80.0808	-43.115 18 in	live oak	3	S
13	27.0348	-80.0808	-42.847 14 in	live oak	3	S
14	27.0348	-80.0808	-46.402 16 in	live oak	3	S
15	27.0348	-80.0808	-46.703 19 in	live oak	2	S
16	27.0348	-80.0808	-46.527 10 in	live oak	2	S
17	27.0348	-80.0808	-59.647 19 in	live oak	2	S
18	27.0348	-80.0808	-43.808 19 in	live oak	1	S
19	27.0348	-80.0808	-42.892 16 in	live oak	3	S
20	27.0348	-80.0808	-42.7 17 in	live oak	3	S
21	27.0348	-80.0808	-46.788 14 in	live oak	2	S



SHRUB / GROUNDCOVER PLANTING DETAIL



PALM PLANTING DETAIL (PALMATE-LEAVED)



VEHICULAR USE AREA PLANTING

REQUIRED	PROVIDED
PERIMETER: TREES (3' OC) SHRUBS (3' OC)	15 EA 28 EA 149 EA 233 EA
INTERIOR: TREES SHRUBS	24 EA 32 EA 202 EA
TREE CREDITS/DEBITS - FROM TREE SURVEY	
59 CREDITS	
48 DEBITS	
TOTAL: 9 TREE CREDITS	

HOBE SOUND CRA TREE REQUIREMENT:

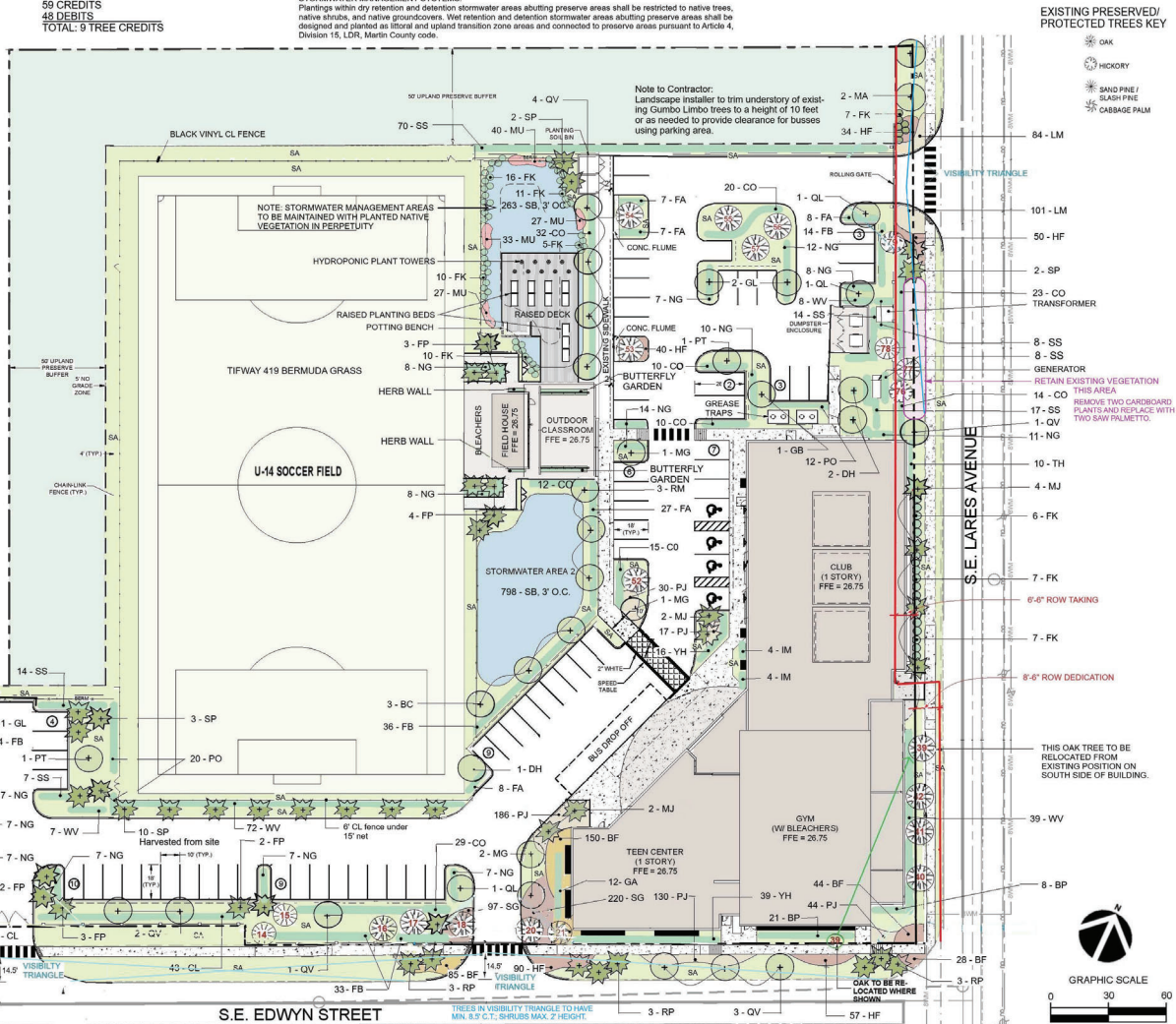
1 TREE PER 1,500 SF SITE AREA, LESS PRESERVE AREA. 183,180 SF/1,500 = 122 TREES DEBITS
TREES PROVIDED: 40 CREDITS
TREES PRESERVED: 57 CREDITS
PALMS PROVIDED: 30 CREDITS
TOTAL TREES PROVIDED: 127 CREDITS
* Sabal and Foxtail palms calculated at 3 per 1 tree credit; Royal and Madroal palms 1 per 1 tree credit.

AREA CALCULATIONS
DEVELOPMENT 183,180 SF
PRESERVE 37,339 SF
TOTAL AREA 220,529 SF
VEHICULAR USE AREA 40,405 SF
INTERIOR VUA 9,140 SF
PERIMETER VUA 49,545 SF
TOTAL VUA 49,545 SF

STORMWATER MANAGEMENT SYSTEMS:
Plantings within dry retention and detention stormwater areas abutting preserve areas shall be restricted to native trees, native shrubs, and native groundcovers. Wet retention and detention stormwater areas abutting preserve areas shall be designed and planted as flood and upland transition zone areas and connected to preserve areas pursuant to Article 4, Division 16, LOR, Martin County code.

DECEMBER 08, 2025

LANDSCAPE PLAN WITH TREE MITIGATION



LANDSCAPE SPECIFICATIONS, Contd.

- All prohibited species shall be removed from the entire site prior to the issuance of a certificate of occupancy. All landscaping shall be maintained free from disease, pests, weeds and litter. Perpetual maintenance shall be provided to prohibit the reestablishment of harmful exotic species within landscaping and preservation areas. If vegetation which is required to be planted dies it shall be replaced with equivalent vegetation. All trees for which credit was awarded and which subsequently die, shall be replaced by the requisite number of living trees according to the standards established in the Martin County Landscape Code.
- Enrollment into required buffers and landscaped areas by vehicles, boats, mobile homes or trailers shall not be permitted, and required landscaped areas shall not be used for the storage or sale of materials or products or the parking of vehicles and equipment.

PREPARED BY:



GEORGE BOTNER, P.A., AICP
LANDSCAPE ARCHITECTURE & PLANNING
4320 S. E. Cove Lake Circle, Suite # 104
Stuart, FL 34997
(954) 798-7158 (Cell) botner@aol.com
(772) 221-9558

FL REG. # 0000422

Signed by:



12/8/2025

DocuSigned by:

George Botner

8EAD085402B41A...