



# Martin County

## Holt Correctional Facility

### Mental Health Housing Pod - Design

***Board of County Commissioners  
Presentation***

***Date: October 7<sup>th</sup>, 2025***



**SecuritECTURE**

**ABONMARCHE BYCE**



**CMTA**

A LEGENCE Company



**BBM**  
STRUCTURAL

# Meeting Agenda

Agenda Item
Need for the Project
Project Overview
Conceptual Design
Conceptual Design Graphics
Conceptual Design Reference Images
Opinion of Probable Cost

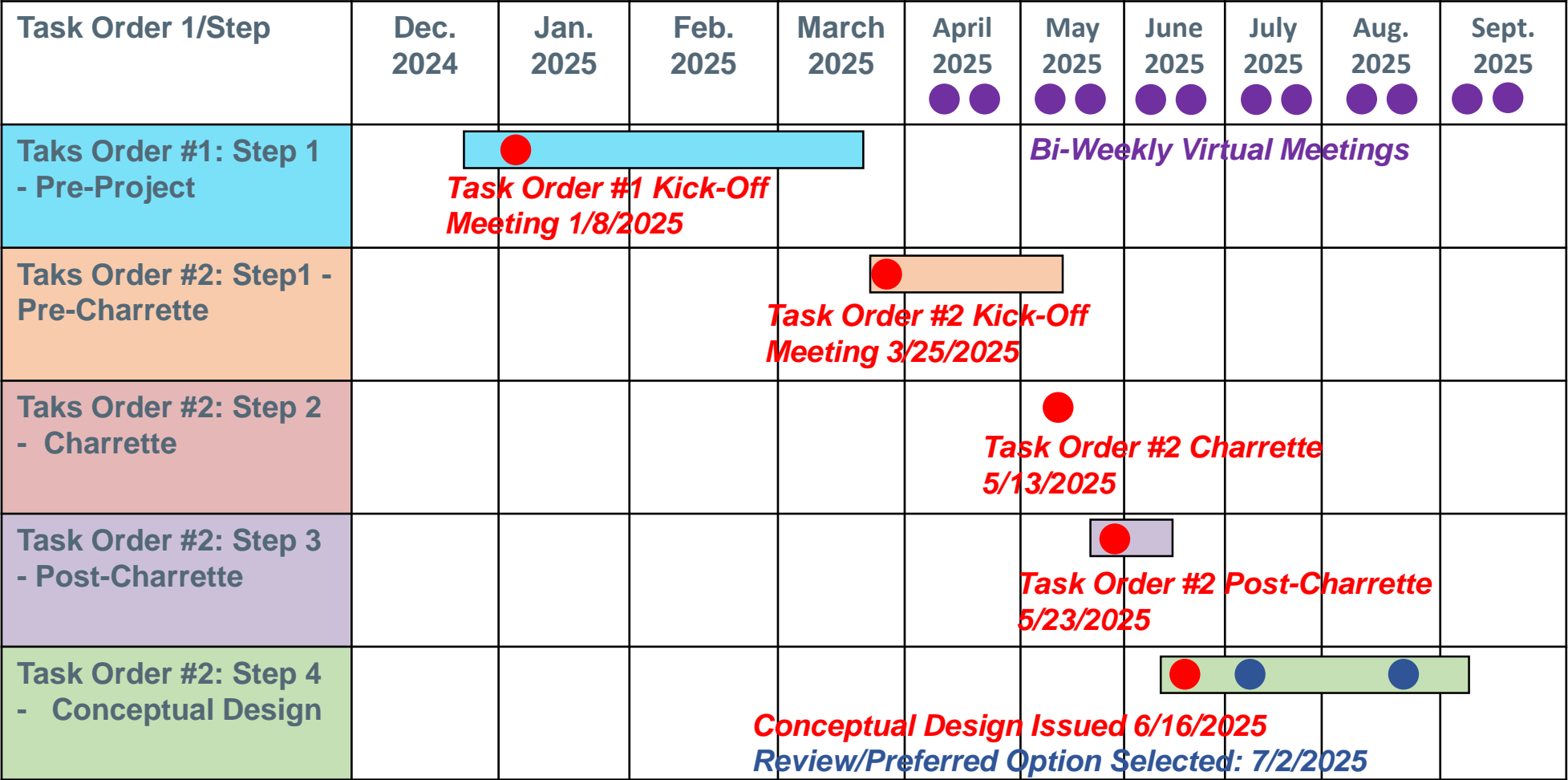
# Need for the Project

- Growing mental health population lacks adequate beds and treatment space.
- Current facility cannot safely separate inmates by mental health needs, security level, or gender.
- Limited ability to safely house shelter care and special needs inmates.
- Insufficient cell blocks and beds for observation, administrative, or disciplinary segregation.
- Lack of space and classification options has negatively impacted inmate and staff safety.
- **PRISM: Public Safety First Mental Health Initiative**
  - PRISM will address these gaps, create a safer environment, and extend the facility's operational effectiveness.

# **PRISM: Public Safety First Mental Health Initiative**

- **Public Safety, Rehabilitation, Intervention, Stabilization, Mental Health.**
  - **Framework to address gaps in inmate care and safety.**
  - **Enhances treatment, housing, and security options.**
- **Full details and appropriation request will be presented at the Delegation Meeting.**

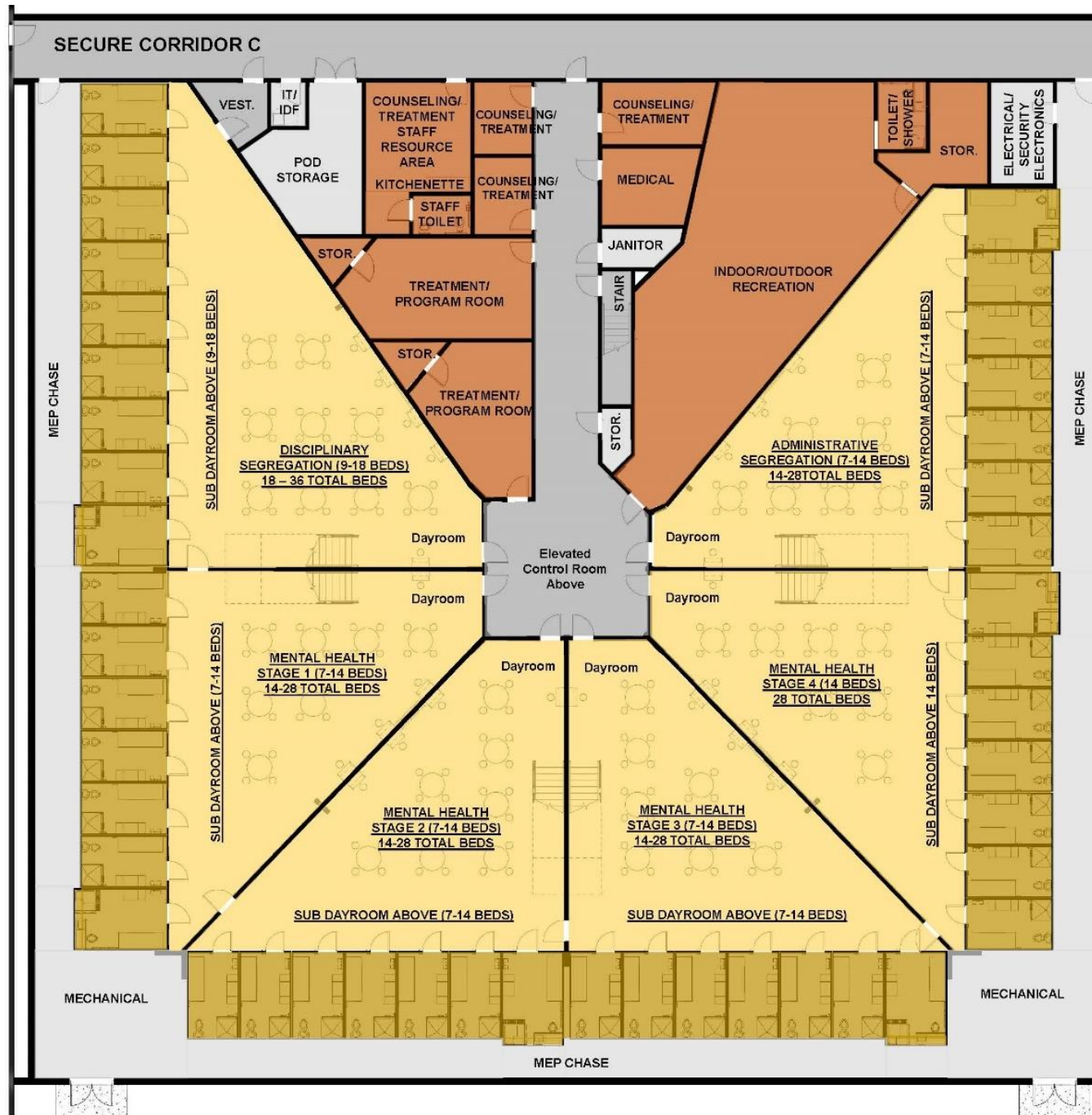
# Project Overview



STEP	COMPLETION
Taks Order #2: Step1 - Pre-Charrette	<i>May 13<sup>th</sup>, 2025</i>
Taks Order #2: Step 2 - Charrette	<i>May 13<sup>th</sup>, 2025</i>
Task Order #2: Step 3 - Post-Charrette	<i>May 23<sup>rd</sup>, 2025</i>
Task Order #2: Step 4 - Conceptual Design	<i>Preferred Option Selection 7/2/2025</i> <i>Conceptual Design Completed: 8/22/2025</i> <i>Draft Report Issued: 7/29/2025</i> <i>Final Report Issued: 8/25/2025</i>

# Conceptual Design Graphics: First Floor Cell Pod 1

EXISTING SECURE CORRIDOR B



	Cells
	Dayrooms
	Program Spaces
	Support Spaces
	Secure Circulation

**Mental Health: Cells – 56, Beds - 112**

**Disciplinary Segregation: Cells – 18, 36 Beds**

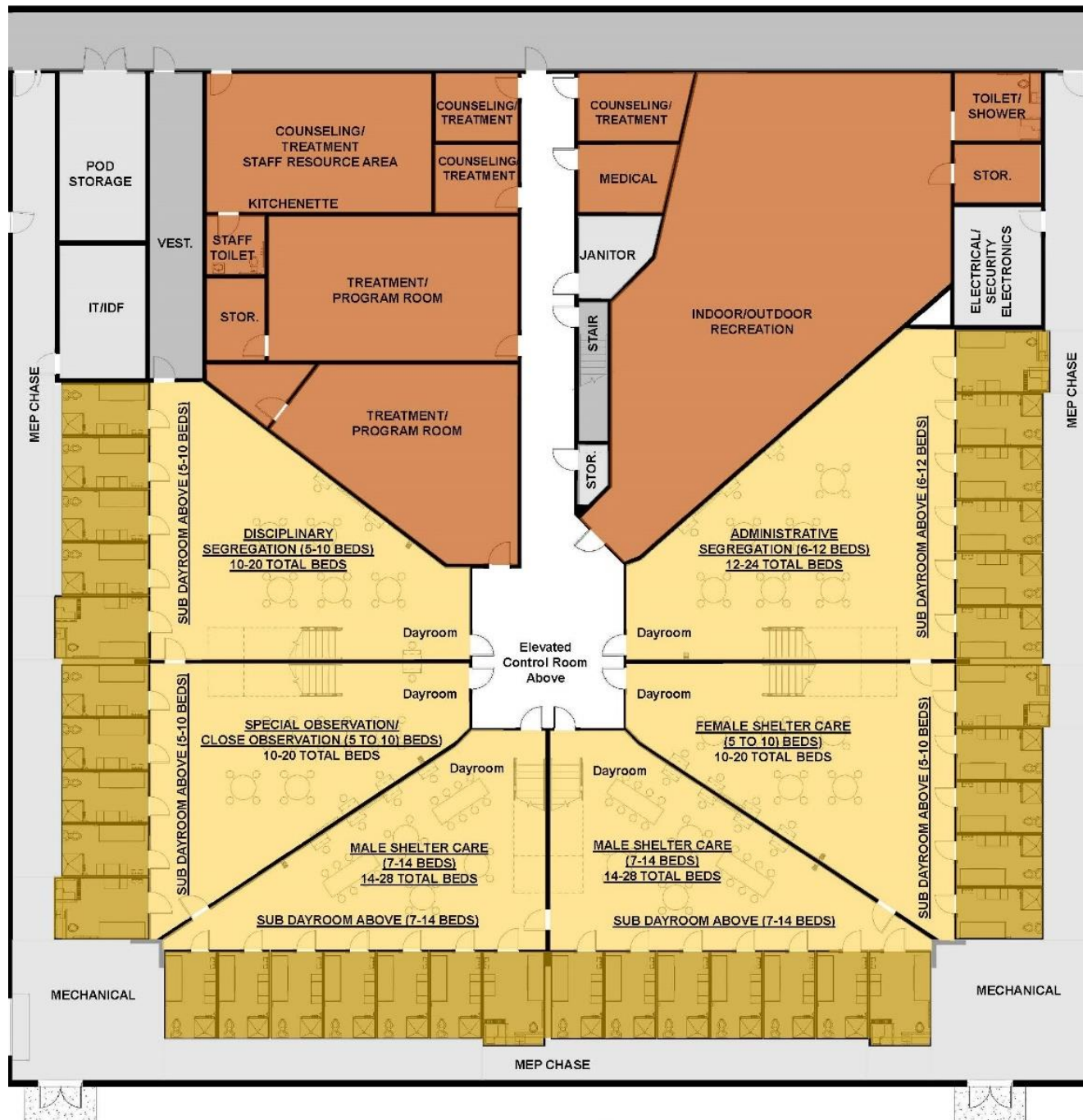
**Administrative Segregation: Cells – 14, Beds 28**

**Total: Cells – 88, Beds – 176 Beds**

**Total Square Feet: 32,080**

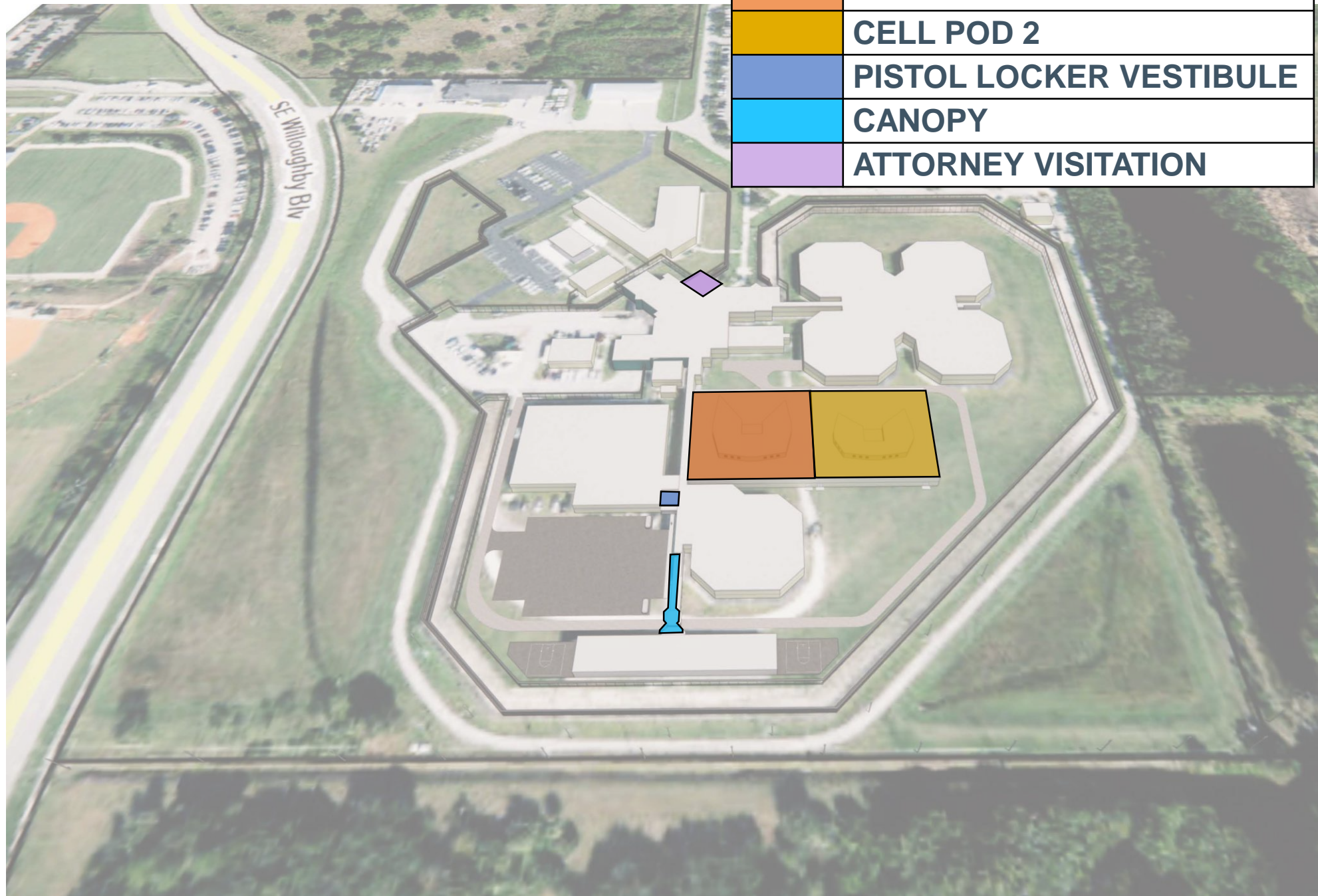


# Conceptual Design Graphics: First Floor Cell Pod 2



	Cells
	Dayrooms
	Program Spaces
	Support Spaces
	Secure Circulation
<b>Shelter Care: Cells – 38, Beds - 76</b>	
<b>Special Observation: Cells – 10, Beds - 20</b>	
<b>Disciplinary Segregation: Cells – 5, 10 Beds</b>	
<b>Administrative Segregation: Cells – 6, Beds 12</b>	
<b>Total: Cells – 59, Beds – 118 Beds</b>	
<b>Total Square Feet: 30,648</b>	

# Conceptual Design Graphics



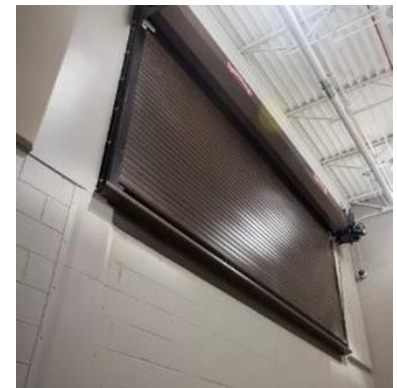


# Conceptual Design Graphics: First Floor



**Cell Pod 1**

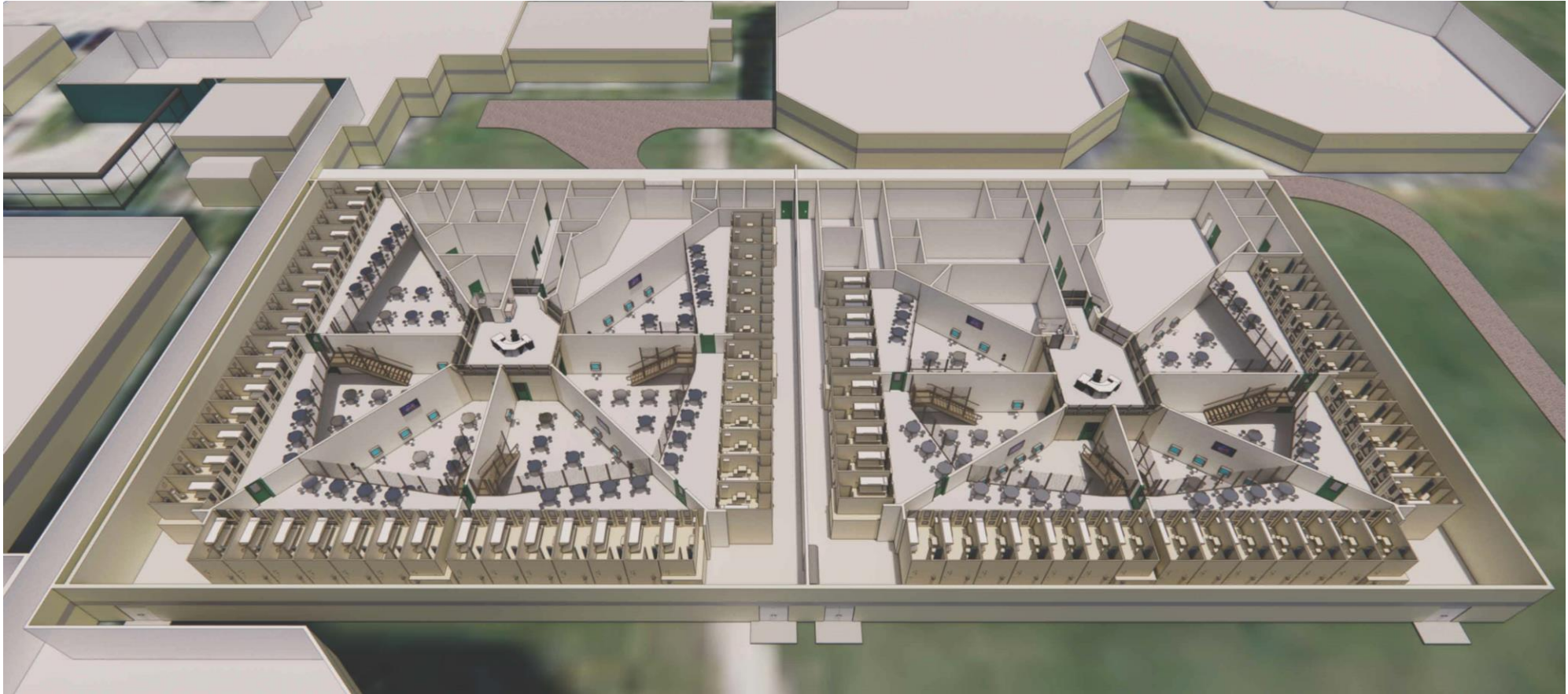
**Cell Pod 2**



## Conceptual Design Reference Images: Program Spaces



# Conceptual Design Graphics: Mezzanine



Cell Pod 1

Cell Pod 2



Conceptual Design Reference Images: Elevated Control Room

# Conceptual Design Graphics: Interior Fly Through

*Insert Interior Fly Through Video*



# Conceptual Design Reference Images: Cells

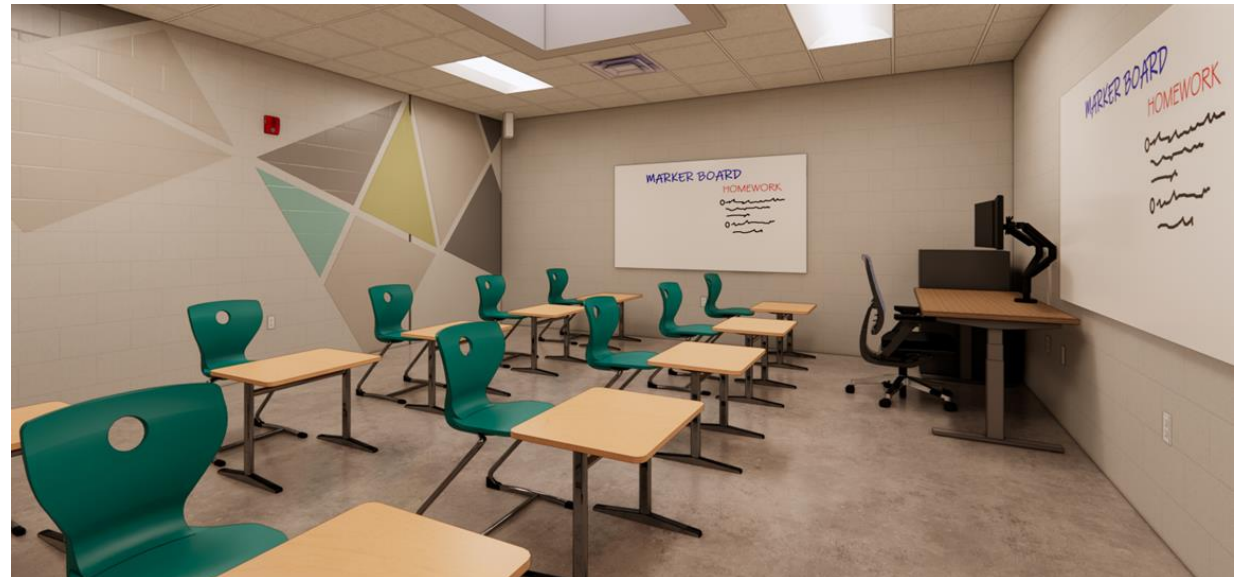




# Conceptual Design Reference Images: Dayrooms



# Conceptual Design Reference Images: Program

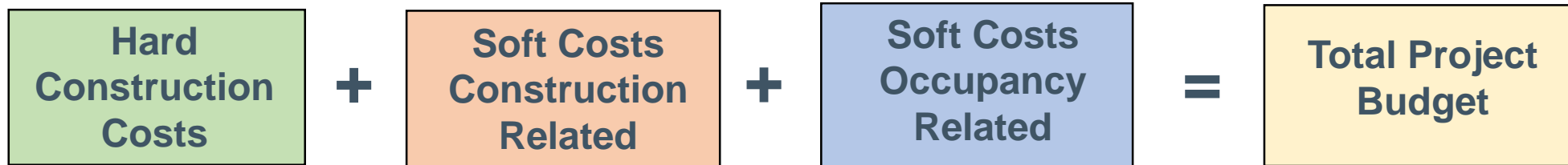




# Conceptual Design Reference Images: Support Space and Modular Construction



# Opinion of Probable Cost



SINGLE PROJECT TOTAL						
Range	Cell Pod 1	Cell Pod 2	Canopy	Pistol Locker Vestibule	Attorney Visitation	Total
Low	\$30 Million	\$29 Million	\$198 K	\$130 K	\$95 K	<b>\$59 Million</b>
High	\$35 Million	\$33 Million	\$230 K	\$152 K	\$111 K	<b>\$69 Millon</b>

PHASED PROJECT TOTAL: PHASE 1						
Range	Cell Pod 1	Cell Pod 2	Canopy	Pistol Locker Vestibule	Attorney Visitation	Total
Low	\$30 Million	Phase 2	\$198 K	\$130 K	\$95 K	<b>\$30 Million</b>
High	\$35 Million		\$230 K	\$152 K	\$111 K	<b>\$36 Millon</b>

PHASED PROJECT TOTAL: PHASE 2						
Range	Cell Pod 1	Cell Pod 2	Canopy	Pistol Locker Vestibule	Attorney Visitation	Total
Low	Phase 1	\$29 Million	Phase 1	Phase 1	Phase 1	<b>\$29 Million</b>
High		\$33 Million				<b>\$33 Million</b>



**Questions?**