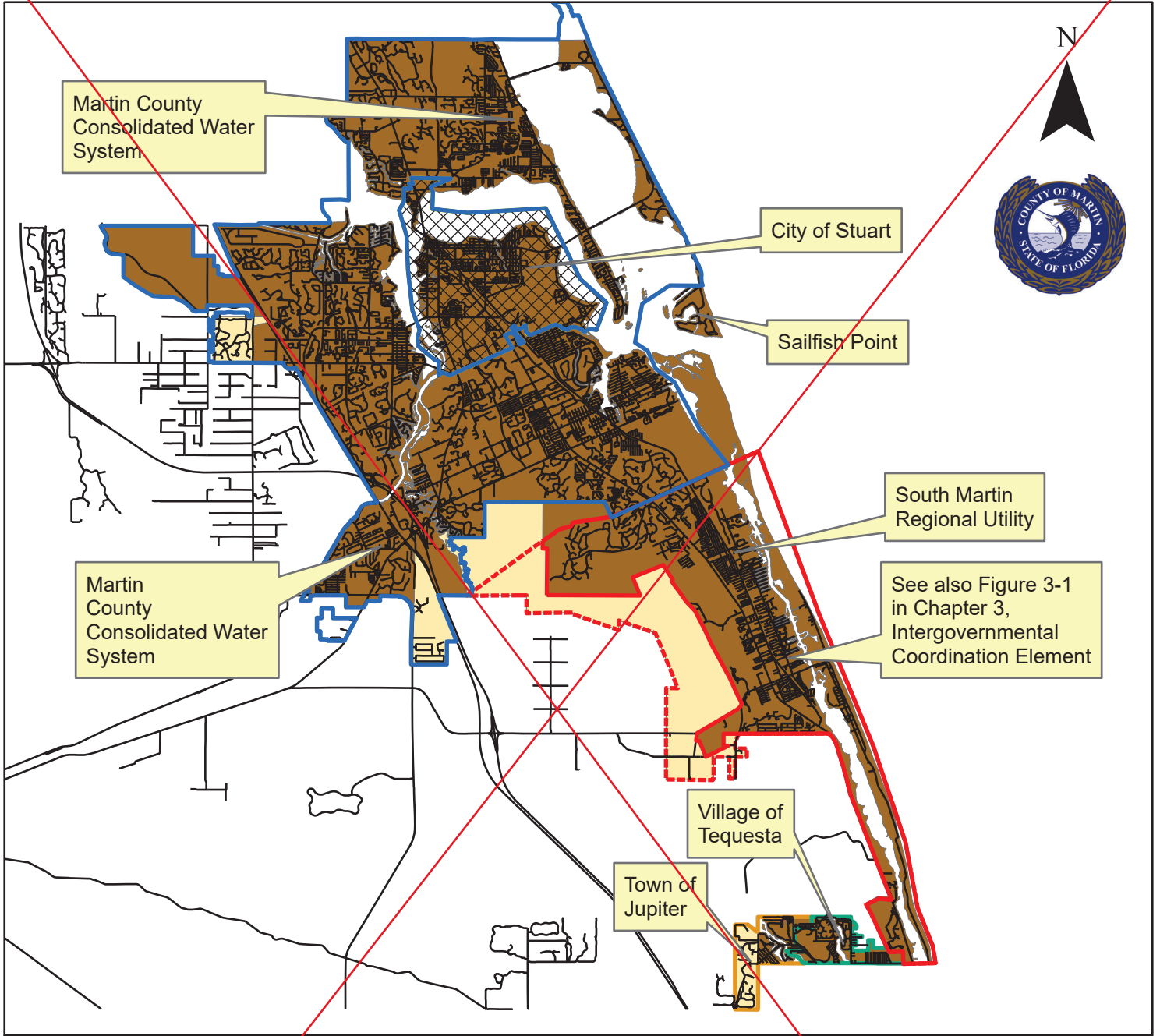


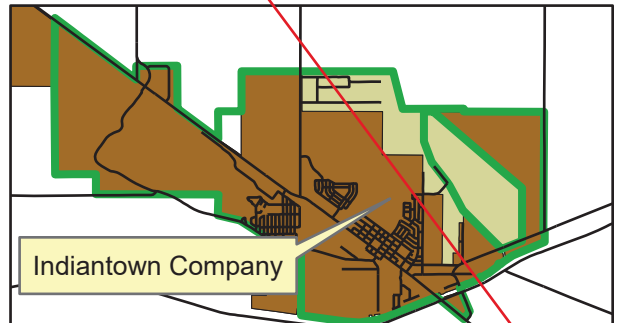
Martin County

Figure 11-1, Areas Currently Served By Regional Utilities



Legend

- | | | |
|---------------------|---------------|--------------------------------|
| Stuart Service Area | SMRU Presumed | Urban Service Districts |
| SMRU Exclusive | Tequesta | Primary |
| Jupiter | Jupiter | Secondary |



Disclaimer
 "This Geographic Information System Map Product, received from Martin County ("COUNTY") in fulfillment of a public records request is provided "as is" without warranty of any kind, and the COUNTY expressly disclaims all express and implied warranties, including but not limited to the implied warranties of merchantability and fitness for a particular purpose. The COUNTY does not warrant, guarantee, or make any representations regarding the use, or the results of the use, of the information provided to you by the COUNTY in terms of correctness, accuracy, reliability, timeliness or otherwise. The entire risk as to the results and performance of any information obtained from the COUNTY is entirely assumed by the recipient."

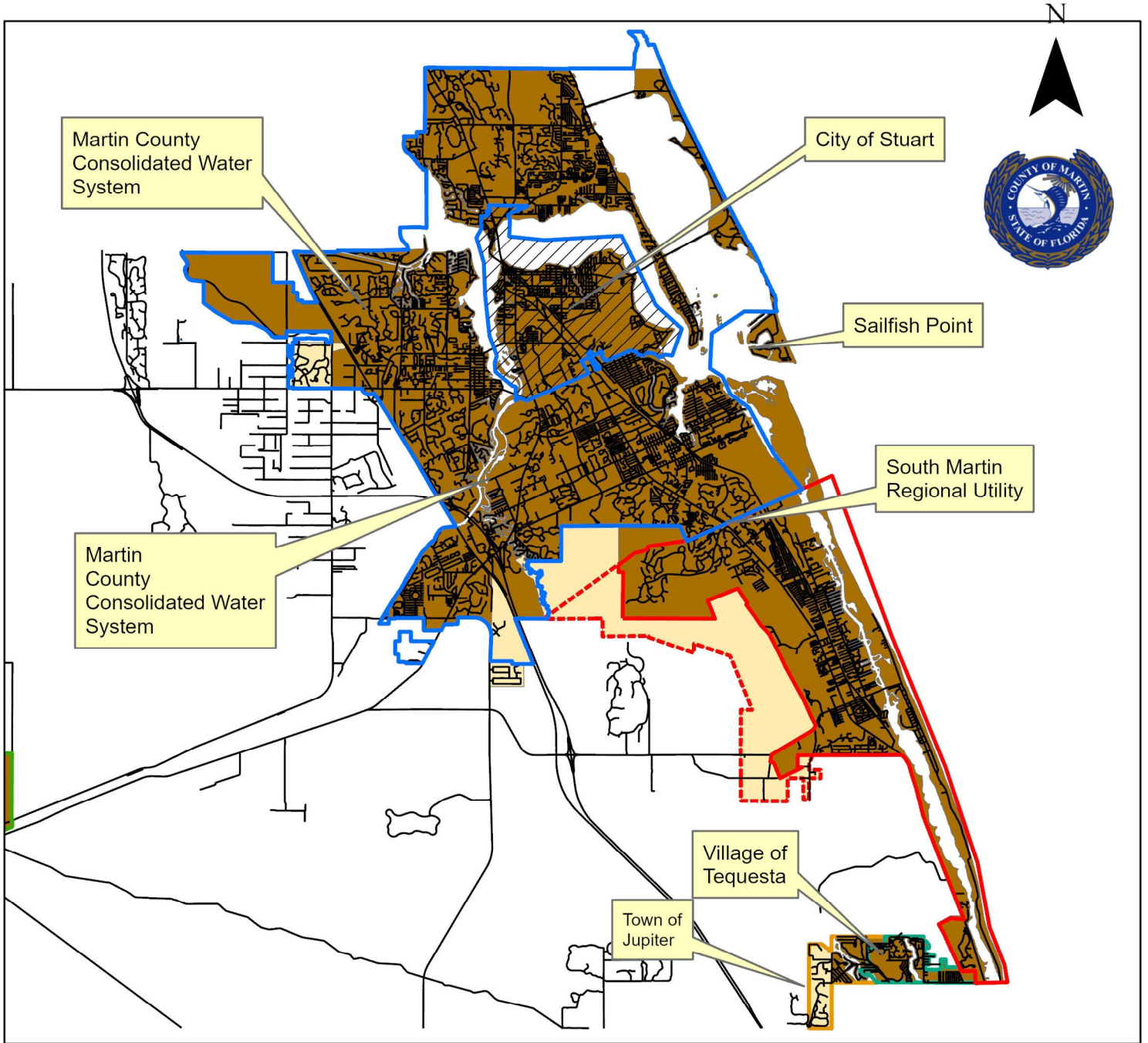
Created By: Samantha Lovelady, AICP

Plot Date: November 14, 2023

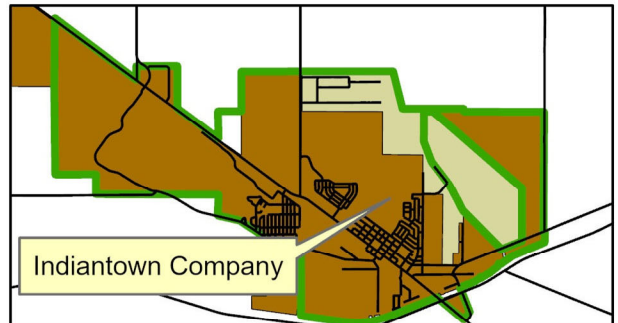
File: T:\GMD\div_comp_plan\cpas\2023\23-01 South Florida Gateway PUD TEXT\GIS_Maps\NEW 11-1 Existing

Martin County

Figure 11-1, Areas Currently Served By Regional Utilities



- | | | |
|----------------|-----------|------------------|
| SMRU Exclusive | Jupiter | CITY OF STUART |
| SMRU Presumed | Primary | MCU SERVICE AREA |
| Tequesta | Secondary | |



Disclaimer
 "This Geographic Information System Map Product, received from Martin County ("COUNTY") in fulfillment of a public records request is provided "as is" without warranty of any kind, and the COUNTY expressly disclaims all express and implied warranties, including but not limited to the implied warranties of merchantability and fitness for a particular purpose. The COUNTY does not warrant, guarantee, or make any representations regarding the use, or the results of the use, of the information provided to you by the COUNTY in terms of correctness, accuracy, reliability, timeliness or otherwise. The entire risk as to the results and performance of any information obtained from the COUNTY is entirely assumed by the recipient."

Created By: Samantha Lovelady, AICP

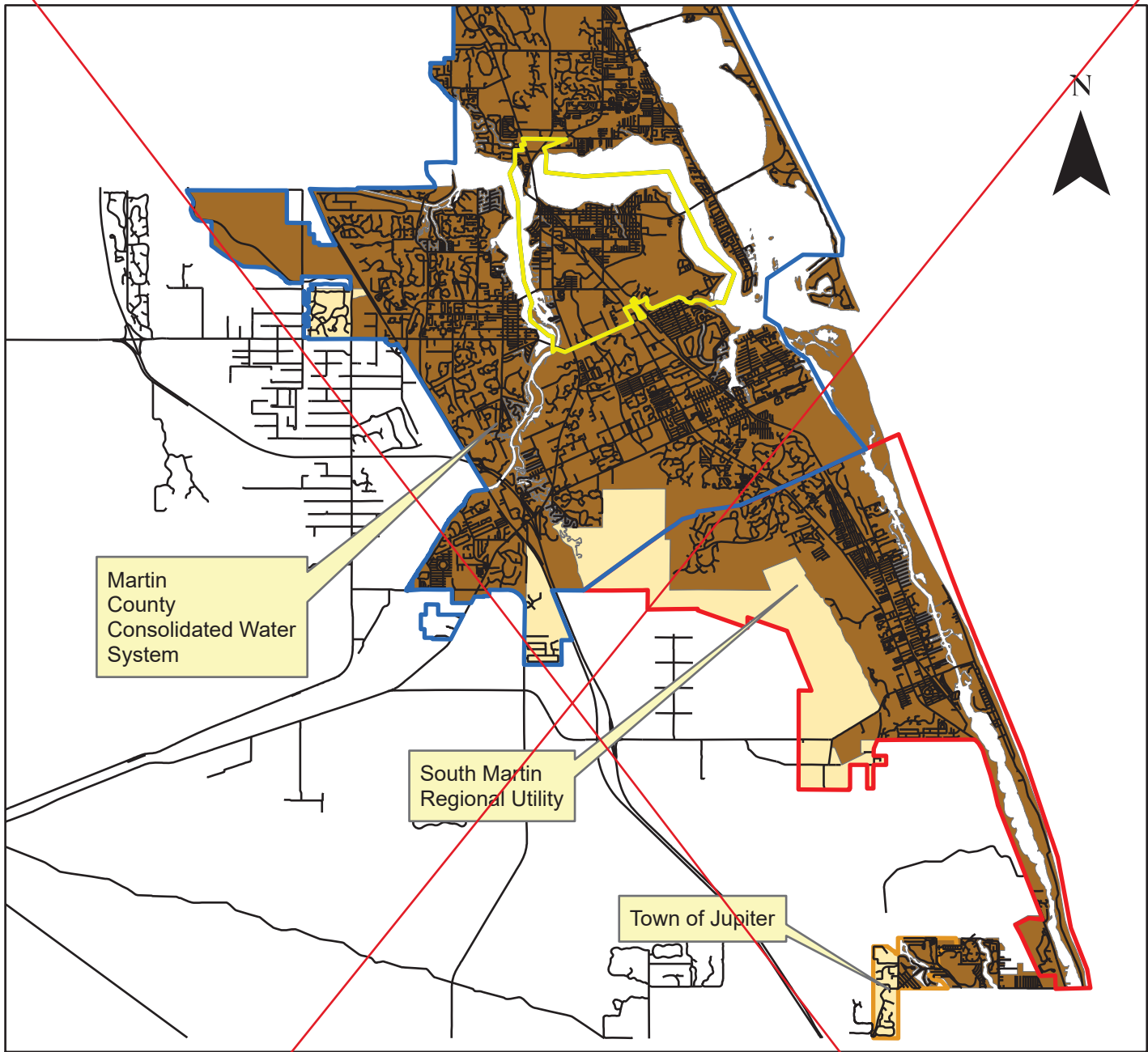
Plot Date: September 13, 2024

File: T:\GMD\div_comp_plan\cpas\EAR_Amendments\CPA24-11 Potable Water\GIS_Maps\Existing Fig 11-1.aprx



Martin County

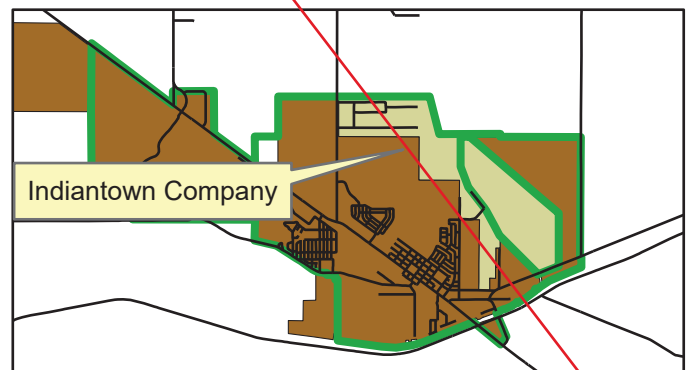
Figure 11-2, Potential Service Areas



Legend

- Stuart Service Area
- SMRU
- Service Areas MCU
- Indiantown
- Jupiter
- Secondary USD
- Primary USD

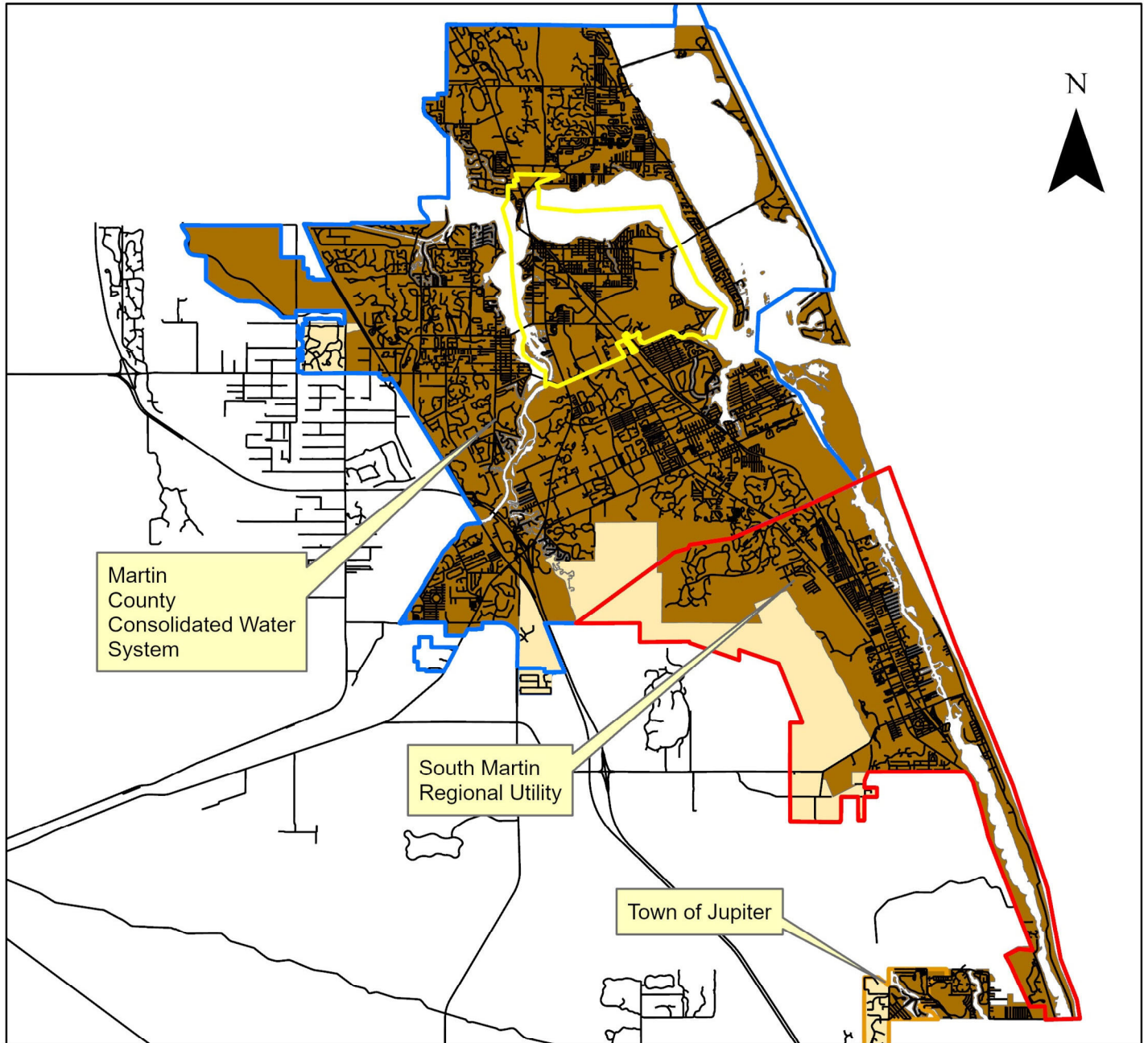
Disclaimer
 "This Geographic Information System Map Product, received from Martin County ("COUNTY") in fulfillment of a public records request is provided "as is" without warranty of any kind, and the COUNTY expressly disclaims all express and implied warranties, including but not limited to the implied warranties of merchantability and fitness for a particular purpose. The COUNTY does not warrant, guarantee, or make any representations regarding the use, or the results of the use, of the information provided to you by the COUNTY in terms of correctness, accuracy, reliability, timeliness or otherwise. The entire risk as to the results and performance of any information obtained from the COUNTY is entirely assumed by the recipient."





Martin County

Figure 11-2, Potential Service Areas



Legend

- Stuart Service Area
- Indiantown
- Secondary USD
- SMRU
- Jupiter
- Service Areas MCU
- Primary USD

Disclaimer
 "This Geographic Information System Map Product, received from Martin County ("COUNTY") in fulfillment of a public records request is provided "as is" without warranty of any kind, and the COUNTY expressly disclaims all express and implied warranties, including but not limited to the implied warranties of merchantability and fitness for a particular purpose. The COUNTY does not warrant, guarantee, or make any representations regarding the use, or the results of the use, of the information provided to you by the COUNTY in terms of correctness, accuracy, reliability, timeliness or otherwise. The entire risk as to the results and performance of any information obtained from the COUNTY is entirely assumed by the recipient."

