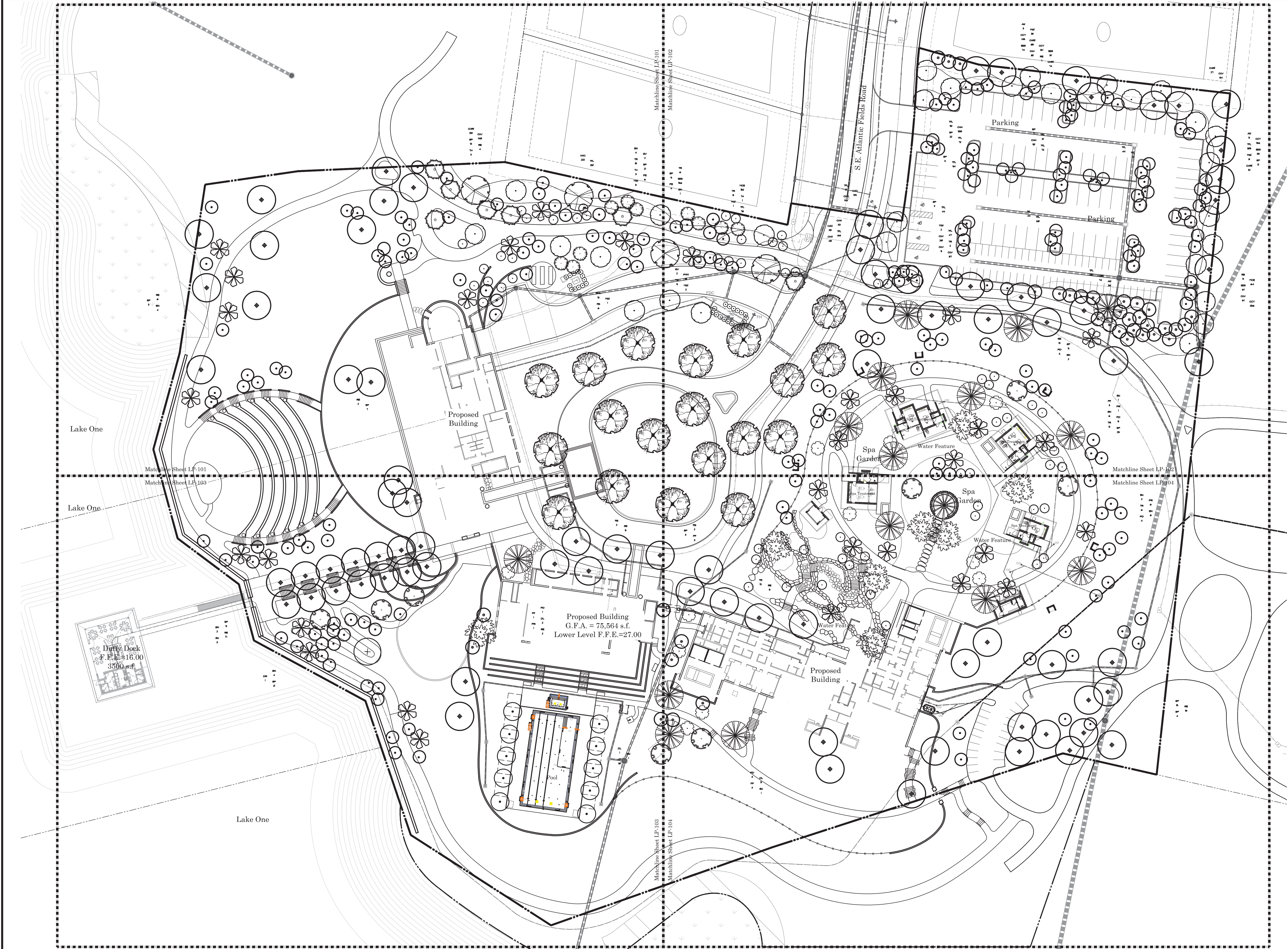
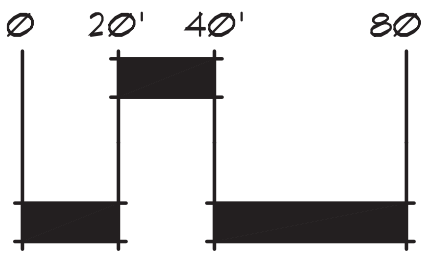
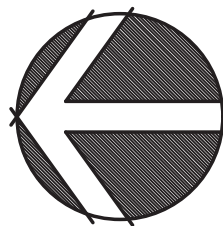


FILE: N:\\ATLANTIC FIELDS\\DRAWINGS\\CLUB\\CLUB CORE\\MARTIN COUNTY PLAN\\21-0707 ATLANTIC FIELDS LANDSCAPE PLAN 3 CLUB CORE.DWG
PLOTTED: 3/7/25 AT 8:45AM BY: DYLAN XREFS: 23-00 PLAN GRID TO SCALE PHASE 2.DWG GENERAL NOTES.DWG 23-00 TB 24X36 PHASE 3.DWG PHASING.LANDWG 24-00 CIVILDWG 21-1014 - FPL PLANDWG 21-1014 - RESIDENTIAL CIVILDWG 21-0707 23-00 CLUB CORE DESIGN BASED.WG 22-0568 CLUB CORE - FLOOR PLAN - OVERALL

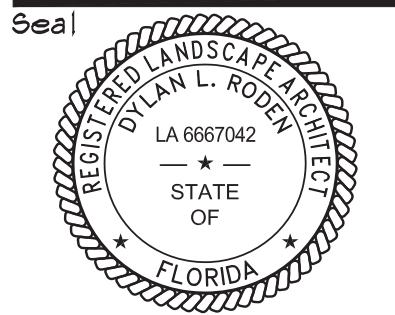


Phase 3C

LP-100 OVERALL LANDSCAPE PLAN
LP-101-104 PHASE 3C LANDSCAPE PLAN SHEETS
LP-200 PLANT LIST SHEET
LP-201 LANDSCAPE SPECIFICATIONS & DETAILS



Designed: _____ DLR
Drawn: _____ DLR
Approved: GGG/EOM/MTJ/DLR
Date: 11/13/24
Job no: 21-0707.3
Revisions: 3/27/25



LA 0000530
Sheet Title:
**Overall
Landscape
Plan**

Scale: 1" = 40'

Sheet No.
LP-100

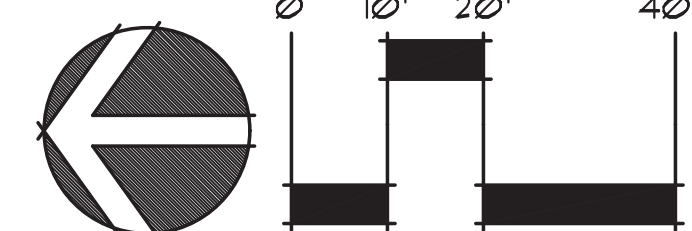
21-0707.3

© Copyright 2024 All Rights Reserved
2GHO
LANDSCAPE ARCHITECTURE
& PLANNING
1907 Commerce Lane
Suite 101
Jupiter, Florida 33458
561-575-9557
www.2GHO.com

Discovery PUD

Martin County, Florida

Phase 3C - Clubhouse Tract - Tract R11-L
Golf Clubhouse Landscape Plans



Seal

REGISTERED LANDSCAPE ARCHITECT
 DYLAN L. RODEN
 LA 6667042
 ★ — ★
 STATE
 OF
 FLORIDA

21-0707.3

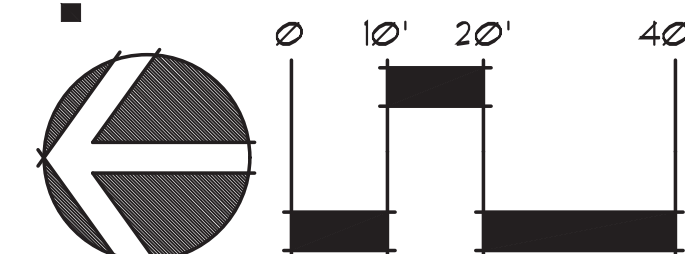
Martin County, Florida



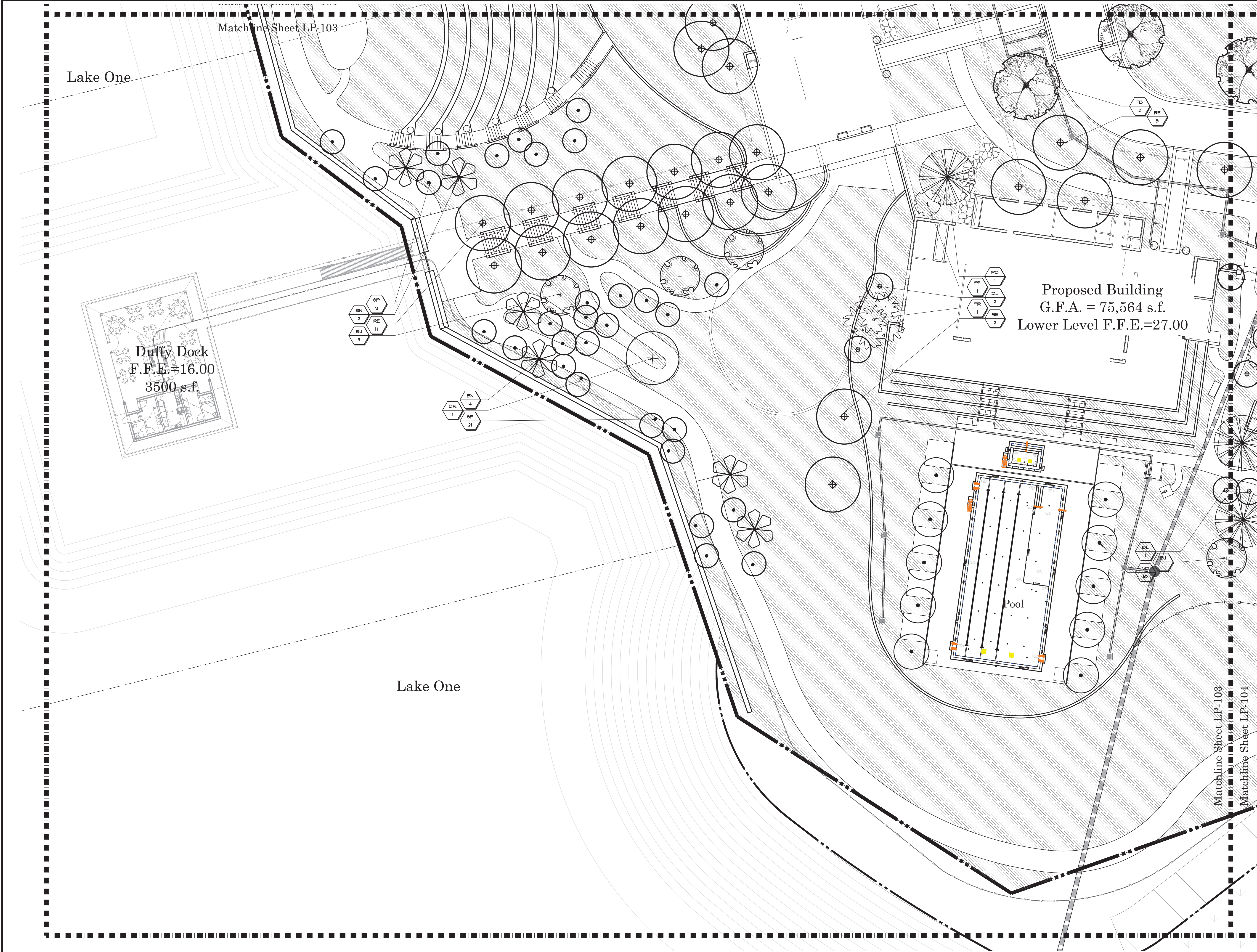
Landscape Development Plan

Sheet No.

21-0707.3



FILE: N:\ATLANTIC FIELDS\DRAWINGS\CLUB\CLUB CORE\MARTIN COUNTY PLAN\21-0707 ATLANTIC FIELDS LANDSCAPE PLAN 3 CLUB CORE.DWG
PLOTTED: 3/7/25 AT 3:41AM BY: DULAN
XREFS: 23-HO PLAN GRID 20 SCALE PHASE 2.DWG GENERAL NOTES.DWG 23-HO TB 24X36 PHASE 3.DWG PHASE 2 HATCHING.DWG PHASING.LANDWG 24-1011 CIVILDWG 21-1014 - FPL PLANDWG 21-1014 - RESIDENTIAL CIVILDWG 21-0707 23-HO CLUB CORE DESIGN BASE.DWG 22-056 CLUB CORE - FLOOR PLAN - OVER



© Copyright 2024 All Rights Reserved

2GHO
LANDSCAPE ARCHITECTURE
& PLANNING

1907 Commerce Lane
Suite 101
Jupiter, Florida 33458
561-575-9557
www.2GHO.com

Phase 3C - Clubhouse Tract - Tract R11-L
Golf Clubhouse Landscape Plans

Discovery PUD

Martin County, Florida

Designed: _____ DLR
Drawn: _____ DLR
Approved: GGG/EOM/MTM/MLR
Date: 11/13/24
Job no: 21-0707.3
Revisions: 3/27/25

SEALED

REGISTERED LANDSCAPE ARCHITECT
DULAN L. ROSEN
LA 6667042
STATE OF FLORIDA

LA 0000530

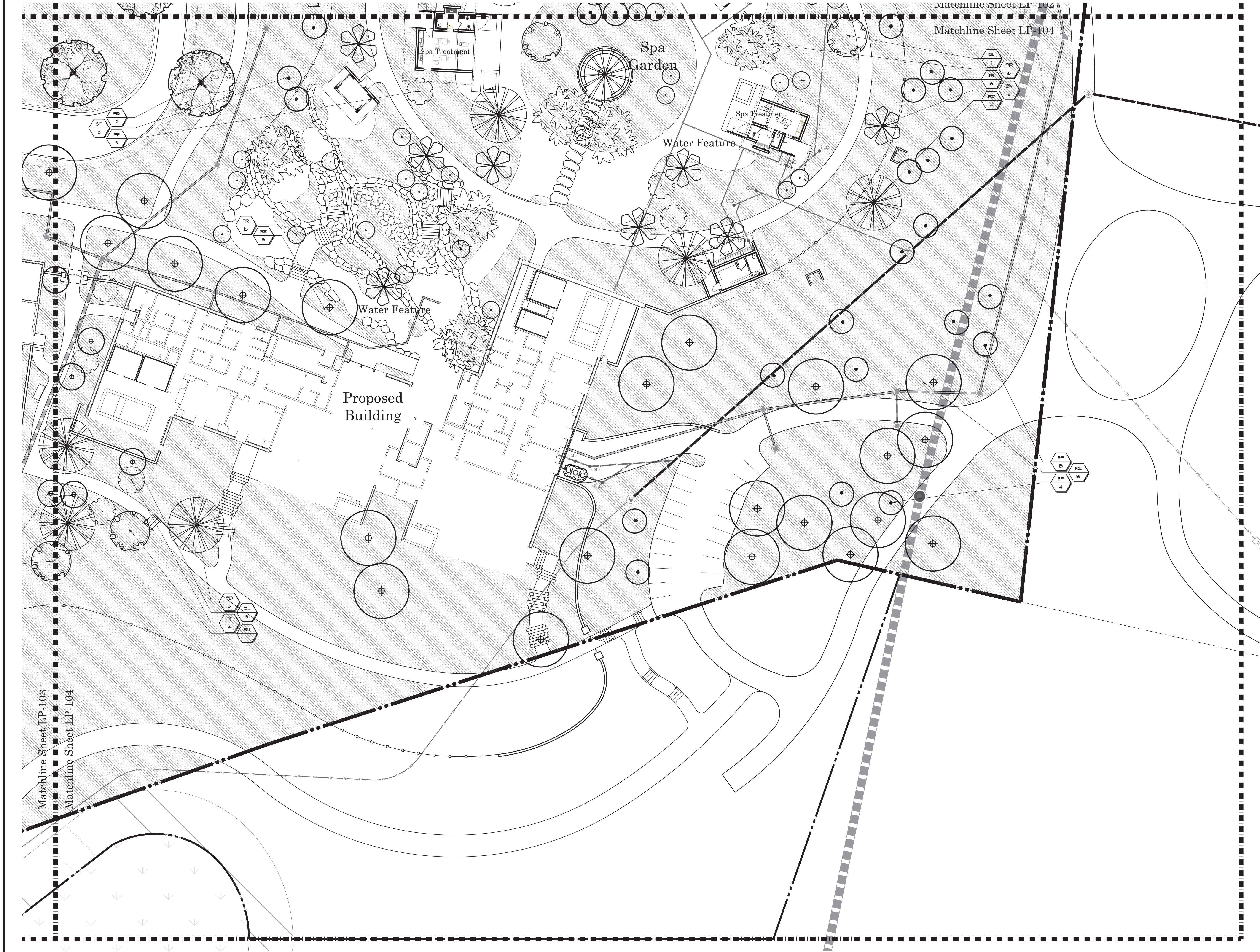
Sheet Title:
Landscape Development Plan

Scale: 1" = 20'

Sheet No.
LP-103

21-0707.3

FILE: N\ATLANTIC FIELDS\DRAWINGS\CLUB CORE\MARTIN COUNTY PLAN\21-0707 ATLANTIC FIELDS LANDSCAPE PLAN 3 CLUB CORE.DWG
PLOTTED: 3/7/25 AT 8:39AM BY: DYLAN
XREFS: 23-HO PLAN GRID 20 SCALE PHASE 2DWG GENERAL NOTES.DWG 23-HO TB 24X36 PHASE 3.DWG PHASE 2 HATCHING.DWG PHASING.LANDWG 24-101 CIVILDWG 21-1014 - RESIDENTIAL CIVIL.DWG 21-0707 23-HO CLUB CORE DESIGN BASE.DWG 22-056 CLUB CORE - FLOOR PLAN - OVER



© Copyright 2024 All Rights Reserved

2GHO
LANDSCAPE ARCHITECTURE
& PLANNING

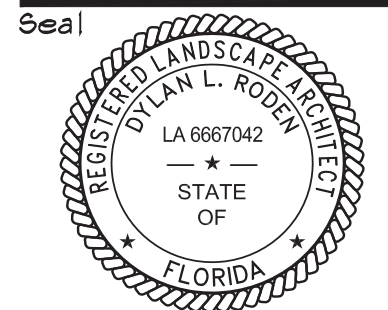
1907 Commerce Lane
Suite 101
Jupiter, Florida 33458
561-575-9557
www.2GHO.com

Phase 3C - Clubhouse Tract - Tract R11-L
Golf Clubhouse Landscape Plans

Discovery PUD

Martin County, Florida

Designed: _____ DLR
Drawn: _____ DLR
Approved: GGG/EOM/MTM/MLR
Date: 11/13/24
Job no: 21-0707.3
Revisions: 3/27/25



LA 0000530
Sheet Title:
Landscape
Development
Plan

Scale: 1"=20'

Sheet No.

LP-104

21-0707.3

FILE: N:\ATLANTIC FIELDS\DRAWINGS\CLUBS\CORE\MARTIN COUNTY PLAN\21-0707 ATLANTIC FIELDS LANDSCAPE PLAN 3 CLUB CORE.DWG
PLOTTED: 3/7/25 AT 8:48AM BY: DYLAN XREFS: 23-HO PLAN GRID 20 SCALE PHASE 2.DWG GENERAL NOTES.DWG 23-HO TB 24X36 PHASE 3.DWG PHASE 2 HATCHING.DWG PHASING.PLAN.DWG 24-HO CIVILDWG 21-HO14 - FPL.PLAN.DWG 21-HO14 - RESIDENTIAL CIVILDWG 21-0707 23-HO CLUB CORE DESIGN BASE.DWG 22-058 CLUB CORE - FLOOR PLAN - OVER

Plant List

Club Core Plant List

TREES											
KEY	QTY.	BOTANICAL NAME	COMMON NAME	HEIGHT	SPREAD	CALIPER	SPACING	D.T.	NATIVE	REMARKS	
BU	8	BAUHINIA X 'BLAKEANA'	HONG KONG ORCHID TREE	10-12'	6-8'	2"	Counted	V	N	SPECIMEN	
DR	1	DELONIX REGIA	ROYAL POINCIANA	14'	6'	4"	Counted	V	N	4' C.T.; SINGLE LEADER	
FB	19	FICUS BENGHALENSIS	BANYAN TREE	14'	6-8'	6"	Counted	V	N	SPECIMEN	
MG1	29	MAGNOLIA GRANDIFLORA 'SOUTHERN'	SOUTHERN MAGNOLIA	14'	6'	4"	Counted	V	Y	MATCHED SPECIMENS	
PE	10	PINUS ELLIOTTII DENSE	SOUTH FLORIDA SLASH PINE	14'	6'	4"	Counted	V	Y	4' C.T. ROOTS PLUS CERTIFIED	
PF	11	PLUMERIA VARIETIES	FRANGIPANI	12'	6-8'	2"	Counted	V	N	4' C.T.; COLORS TO BE SELECTED BY LA	
QV	4	QUERCUS VIRGINIANA	LIVE OAK	14'	6'	4"	Counted	V	Y	4' C.T.; SINGLE LEADER	
TH	7	TABEUBIA HETEROPHYLLA	PINK TABEUBIA	14'	6-7"	2"	Counted	M	N	SPECIMEN	
PALMS											
KEY	QTY.	BOTANICAL NAME	COMMON NAME	HEIGHT		CALIPER	SPACING	D.T.	NATIVE	REMARKS	
AW	34	ACOELORRHAPHIE WRIGHTII	EVERGLADES PALM	12-16'	C.T.	MULTI	Counted	V	Y	B&B; FULL CLUMP; FLORIDA FANCY	
BN	31	BISMARCKIA NOBILIS 'SILVER'	SILVER BISMARCK	14'	C.T.	HEAVY	Counted	M	N	MATCHED SPECIMENS; HARDEND OFF	
DL	8	DYPSIS LUTESCENS	ARECA PALM	12-16'	C.T.	MULTI	Counted	V	N	B&B; FULL CLUMP; FLORIDA FANCY	
PD	16	PHOENIX DACTYLIFERA 'MEDJOOL'	MEDJOOL DATE PALM	10'	C.T.	SINGLE	Counted	V	N	GRADE #1; CERTIFIED	
PR	8	PHOENIX RECLINATA	SENEGAL DATE PALM	24-32'		MULTI	Counted	M	N	COLLECTED; MULTI; 8 HEADS MIN.; LBD RESISTANT	
RE	82	ROYSTONEA ELATA	ROYAL PALM	10'	G.W.	HEAVY 18" MIN.	Counted	V	Y	SCAR FREE TRUNKS	
SP	204	SABAL PALMETTO	CABBAGE PALMETTO	14-24'	C.T.	16" MIN.	Counted	V	Y	1/3 CURVED; 1/3 S CURVED TALL; 1/3 STRAIGHT - REGENERATED - SLICK TRUNKS	
TR	59	THRINAX RADIATA	FLORIDA THATCH PALM 'SINGLE'	10-12'	C.T.	SINGLE	Counted	V	Y	CHARACTER	
VM	10	VEITCHIA MONTGOMERYANA	MONTGOMERY PALM	10'	C.T.	SINGLE	Counted	M	N	MATCHED - DARK GREEN HEADS	
SHRUBS											
KEY	QTY.	BOTANICAL NAME	COMMON NAME	HEIGHT	SPREAD	GAL.	SPACING	D.T.	NATIVE	REMARKS	
CCY	718	CAPPARIS CYNOPHALLOPHORA	JAMAICA CAPER	24"	18"	-	2.5Ctr	V	Y	FULL TO BASE	
CHR1	562	CHRYSOBALANUS ICACO 'RED TIP'	RED TIP COCOPLUM	24"	16"	-	3Ctr	V	Y	FULL CLUMP	
CUV	453	COCCOLOBA UVIFERA	SEAGRAPE	60"	36"	-	4Ctr	V	Y	FULL; LOW BRANCHED BUSH	
HAC	316	HAMELIA PATENS 'CALUSA'	FIREBUSH	24"	16"	-	2.5Ctr	V	Y	FULL TO BASE	
MCE	216	MYRICA CERIFERA	WAX MYRTLE	60"	30"	-	4Ctr	V	Y	FULL; LOW BRANCHED BUSH	
PMM	31	PODOCARPUS MACROPHYLLUS 'MAKI'	JAPANESE YEW	10'	48"	-	4Ctr	V	N	FULL TO BASE	
SES	377	SERENOA REPENS 'SILVER FORM'	SILVER SAW PALMETTO	20"	20"	-	3Ctr	V	Y	FULL TO BASE	
TFL	1446	TRIPSACUM FLORIDANA	FLORIDA GAMMA GRASS	24"	-	-	2.5Ctr	V	Y	FULL CLUMP	
GROUNDCOVER											
KEY	QTY.	BOTANICAL NAME	COMMON NAME	HEIGHT	SPREAD	GAL.	SPACING	D.T.	NATIVE	REMARKS	
CHH	424	CHRYSOBALANUS ICACO 'HORIZONTAL'	HORIZONTAL COCOPLUM	18"	18"	-	2Ctr	V	Y	FULL TO BASE	

ABBREVIATIONS:
D.T.: DROUGHT TOLERANCE, V= VERY, M= MODERATE, L= LOW
NATIVE: Y= YES, N= NO
G.W.=GREY WOOD, C.T.= CLEAR TRUNK, O.A.=OVERALL, A.S.= AS SPECIFIED, O.C.=ON CENTER

Legend

 Bahia Sod 279,083 s.f.

Phase 3C Landscape Data						11/13/2024
Site Data		Area	Acres			
Total Project Area			1,530.9	a.c.		
Landscape Data			Required		Provided	
Phase 3C Development Area		514,549	s.f.			
Trees (1 per 2,500 s.f.)			206	tree/palm credits	207	tree/palm credits
Vehicular Use Area		37,524	s.f.			
Perimeter			983	l.f. perimeter	983	l.f. perimeter
Trees (1 per 300 s.f.)			9,830	s.f. landscape area	19,647	s.f. landscape area
Interior Vehicular Use Area		37,524	s.f.			
Interior Trees (3 per planting area s.f.)			8	planting areas	88	l.f. perimeter
			23	tree/palm credits	23	tree/palm credits
Phase 3C Total			261	tree/palm credits	263	tree/palm credits
Native Percentage						
Trees			75%		78%	
Shrubs & Ground Covers			50%		99%	

Phase 3C Tree Credit Calculations						11/13/2024
		Required Tree Credits		Provided		Total Tree Credits
Trees						
1 Tree = 1 Tree				89	Trees	89 Tree Credits
Large Trees						
13-18" D.B.H = 3 Trees				0	Trees	0 Tree Credits
Small Palms						
3 Palms = 1 Tree				315	Palms	105 Palm Credits
Large Palms						
2 Palms = 1 Tree				137	Palms	69 Palm Credits
Total	261	Trees & Palms	541	Trees & Palms	263	Total Credits

Notes:

-ALL UTILITIES AND TREE CONFLICTS SHALL BE IDENTIFIED PRIOR TO PLANTING AND REVIEWED WITH LANDSCAPE ARCHITECT & MUST MEET MINIMUM UTILITY SETBACKS PER ROOT BARRIER DETAIL ON SHEET LP-201
-ALL PROHIBITED SPECIES SHALL BE REMOVED FROM THE ENTIRE SITE PRIOR TO THE ISSUANCE OF A CERTIFICATE OF OCCUPANCY.
-THE USE OF CYPRESS MULCH IS PROHIBITED IN ALL LANDSCAPED AREAS
-ANY SUPPLEMENTAL PLANTINGS BEYOND THE REQUIRED PLANTINGS WILL MEET THE MINIMUM CODE REQUIREMENT OF 75% NATIVE TREES AND SHRUBS AND 50% GROUNDCOVERS.
-ST. AUGUSTINE SOD IS PROHIBITED ANYWHERE ONSITE.

-NO USE SHALL BE MADE OF, AND NO DEVELOPMENT ACTIVITY SHALL BE PERMITTED IN, LAND USE BUFFERS AND PERIMETER LANDSCAPE AREAS, EXCEPT FRO:
I. PLANTING MATERIAL APPROVED AS PART OF THE LANDSCAPE PLAN.
II. COMPLETELY UNDERGROUND UTILITIES AND ESSENTIAL, SPECIFICALLY APPROVED, OVERHEAD OR ABOVEGROUND UTILITIES WHICH CROSS THESE AREAS AND TO NOT INTERFERE WITH THE MATURE GROWTH OF REQUIRED PLANT MATERIAL.
III. GRASS DITCHES, WITH BACK SLOPES NOT STEEPER THAN 3V:1H, WHICH CAN SUPPORT THE REQUIRED LANDSCAPING MATERIALS.

-PROTECTION OF REQUIRED LANDSCAPING
1. ENCROACHMENT INTO REQUIRED BUFFERYARDS AND LANDSCAPED AREAS BY VEHICLES, BOATS, MOBILE HOMES OR TRAILERS SHALL NOT BE PERMITTED, AND REQUIRED LANDSCAPED AREAS SHALL NOT BE USED FOR THE STORAGE OF MATERIALS OR PRODUCTS OR THE PARKING OF VEHICLES AND EQUIPMENT.

-MAINTENANCE OF REQUIRED LANDSCAPING
1. REQUIRED LANDSCAPING SHALL BE MAINTAINED SO AS TO AT ALL TIMES PRESENT A HEALTHY, NEAT AND ORDERLY APPEARANCE, FREE OF REFUSE AND DEBRIS. IF VEGETATION WHICH IS REQUIRED TO BE PLANTED DIES IT SHALL BE REPLACED WITH EQUIVALENT VEGETATION. ALL TREES FOR WHICH CREDIT WAS AWARDED AND WHICH SUBSEQUENTLY DIE, SHALL BE REPLACED BY THE REQUISITE NUMBER OF LIVING TREES ACCORDING TO THE STANDARDS ESTABLISHED IN THE MARTIN COUNTY LANDSCAPE CODE.
2. ALL LANDSCAPING SHALL BE MAINTAINED FREE FROM DISEASE, PESTS, WEEDS AND LITTER. MAINTENANCE SHALL INCLUDE WEEDING, WATERING, FERTILIZING, PRUNING, MOWING, EDGING, MULCHING OR OTHER MAINTENANCE, AS NEEDED AND IN ACCORDANCE WITH ACCEPTABLE HORTICULTURAL PRACTICES. PERPETUAL MAINTENANCE SHALL BE PROVIDED TO PROHIBIT THE REESTABLISHMENT OF HARMFUL EXOTIC SPECIES WITHIN LANDSCAPING AND PRESERVATION AREAS.
3. REGULAR LANDSCAPE MAINTENANCE SHALL BE PROVIDED FOR REPAIR OR REPLACEMENT, WHERE NECESSARY, OF ANY SCREENING OR BUFFERING REQUIRED AS SHOWN ON THIS PLAN. REGULAR LANDSCAPE MAINTENANCE SHALL BE PROVIDED FOR THE REPAIR OR REPLACEMENT OF REQUIRED WALLS, FENCES OR STRUCTURES TO A STRUCTURALLY SOUND CONDITION AS SHOWN ON THIS PLAN.
4. THE ASSOCIATION AND HOBE-ST. LUCIE CONSERVANCY DISTRICT SHALL MAINTAIN ALL COMMON AREAS AND PRESERVATION AREAS FREE OF PROHIBITED PLANT SPECIES AS DEFINED IN MARTIN COUNTY LAND DEVELOPMENT REGULATIONS AND FREE OF INVASIVE PLANT SPECIES DESIGNATED AS CATEGORY I BY THE FLORIDA INVASIVE SPECIES COUNCIL (FISC) OR THE FLORIDA EXOTIC PEST PLANT COUNCIL (FEPPC).

© Copyright 2024 All Rights Reserved



LANDSCAPE ARCHITECTURE & PLANNING

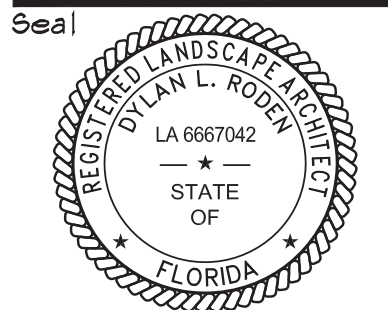
1907 Commerce Lane
Suite 101
Jupiter, Florida 33458
561-575-9557
www.2GHO.com

Phase 3C - Clubhouse Tract - Tract R11-L
Golf Clubhouse Landscape Plans

Discovery PUD

Martin County, Florida

Designed: _____ DLR
Drawn: _____ DLR
Approved: GGG/EOM/MTM/MLR
Date: 11/13/24
Job no. 21-0707.3
Revisions: 3/27/25



LA 0000530
Sheet Title:
Phase 3B
Plant List

Scale: N.T.S.

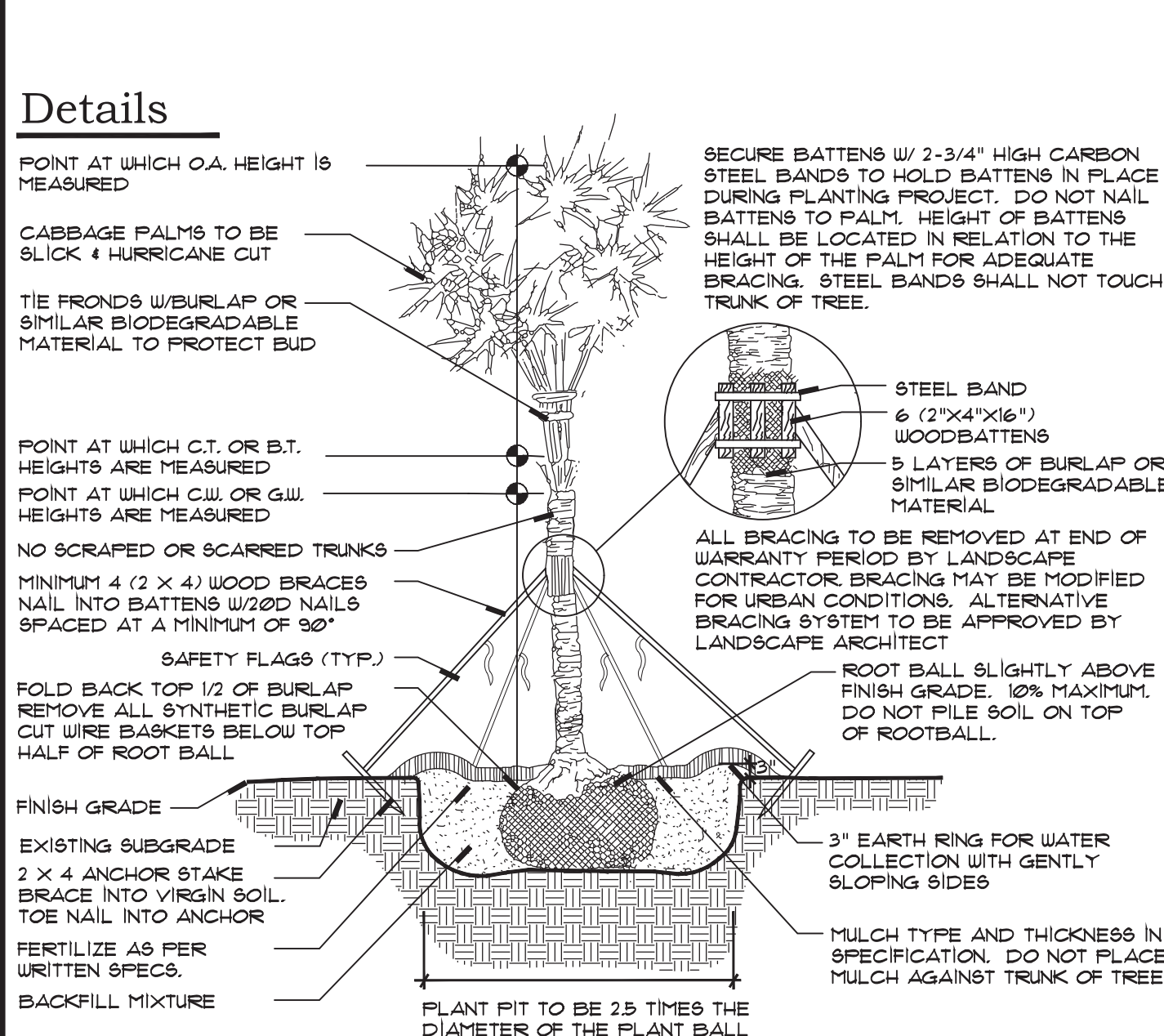
Sheet No.
LP-200

See Sheet LP-201 For Landscape Specifications & Details

FILE: NATLANTIC FIELDS DRAWINGS\CLUBS\CLUB CORE\MARTIN COUNTY PLAN\21-0707 ATLANTIC FIELDS LANDSCAPE PLAN 3 CLUB CORE.DWG
PLOTTED: 3/7/25 AT 8:41 AM BY: DYLAN XEFFS 23-00 PLAN GRID 20 SCALE PHASE 2.DWG GENERAL NOTES.DWG 23-00 TB 21X36 PHASE 3.DWG PHASE 2 HATCHING.DWG PHASING.LANDWG 24-101 CIVIL.DWG 21-014 - FPL PLANDWG 21-1014 - RESIDENTIAL CIVIL.DWG 21-0707 23-00 CLUB CORE DESIGN BASE.DWG 22-058 CLUB CORE - FLOOR PLAN - OVER

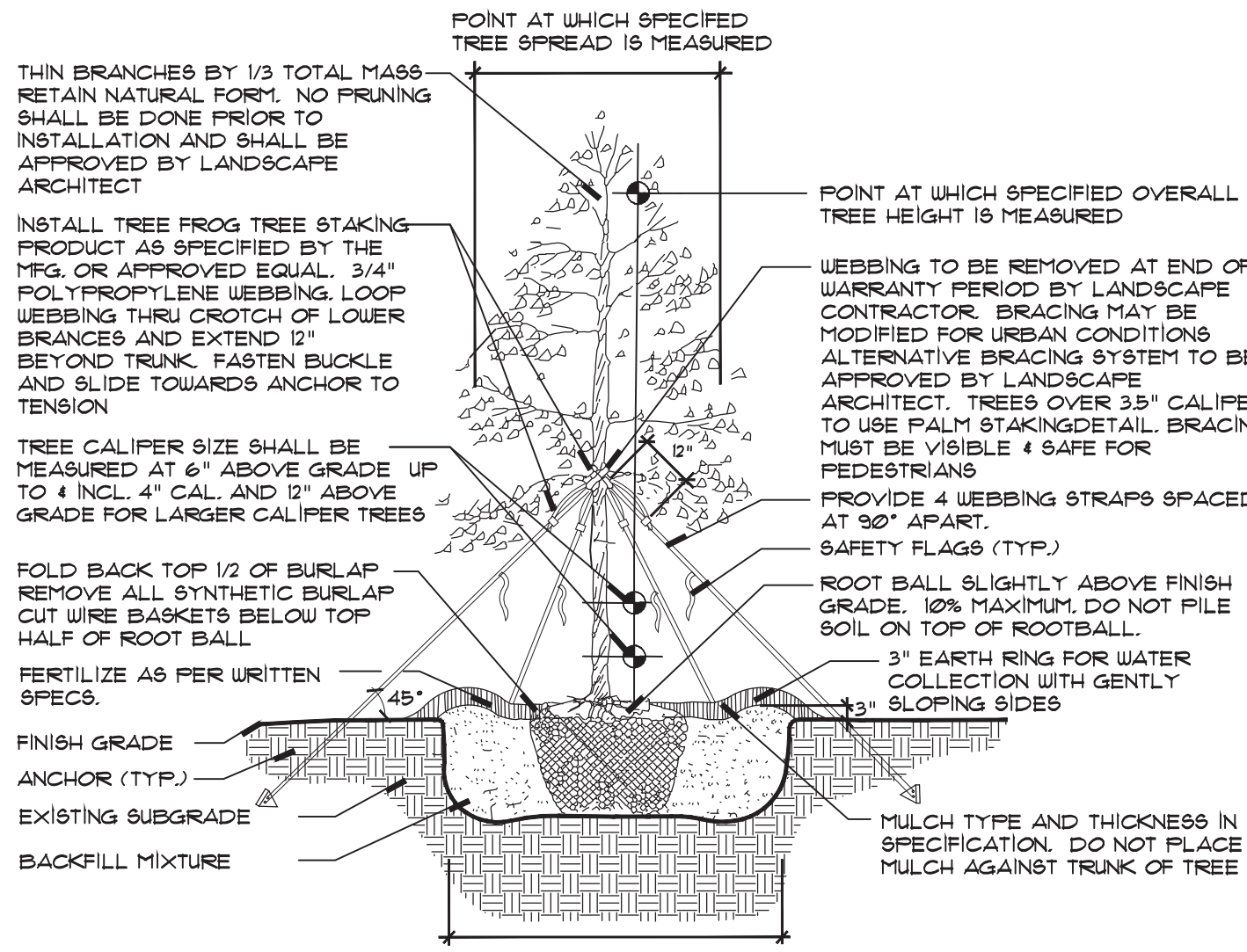
See Sheet LP-200 For Plant List

Details



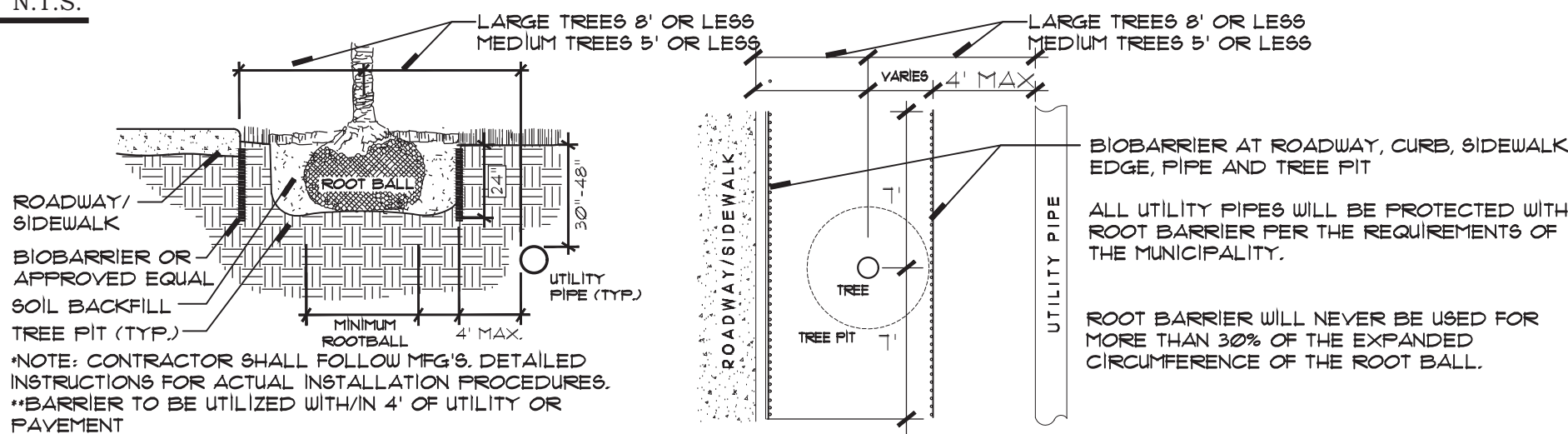
Palm Planting Detail N.T.S.

Tree Planting Over 3.5' Cal.

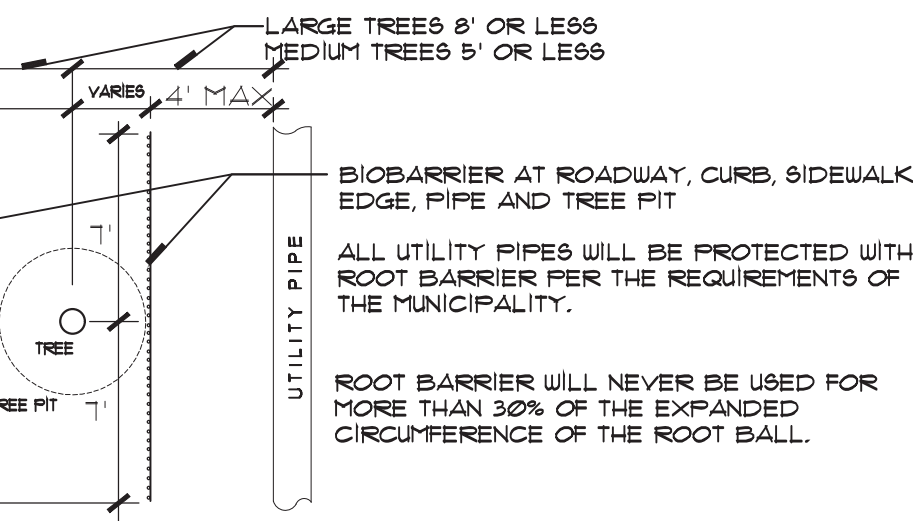


Tree Planting Detail N.T.S.

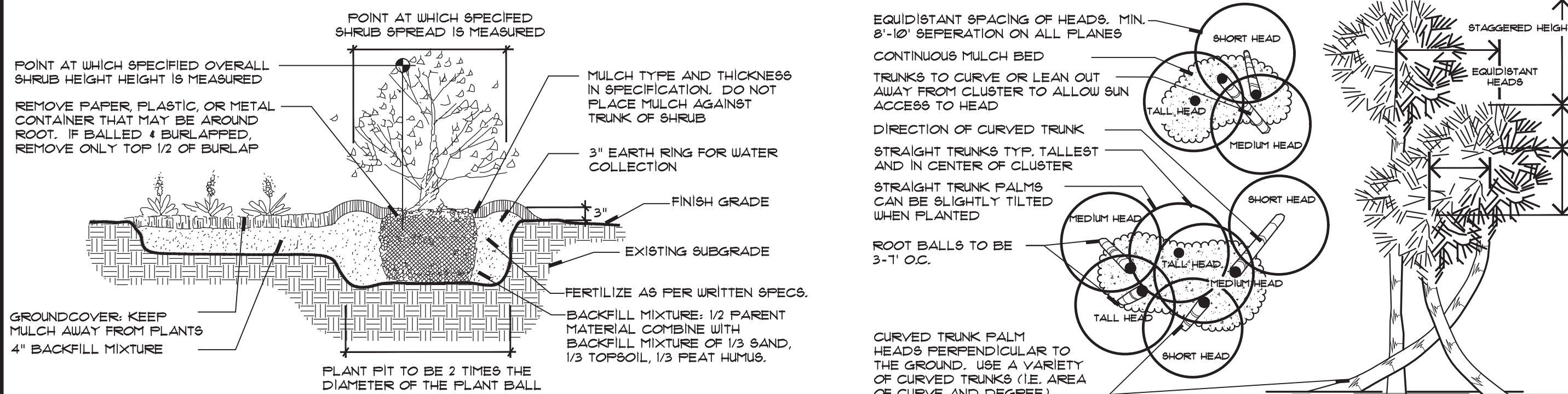
Tree Planting 1" To 3.5" Cal.



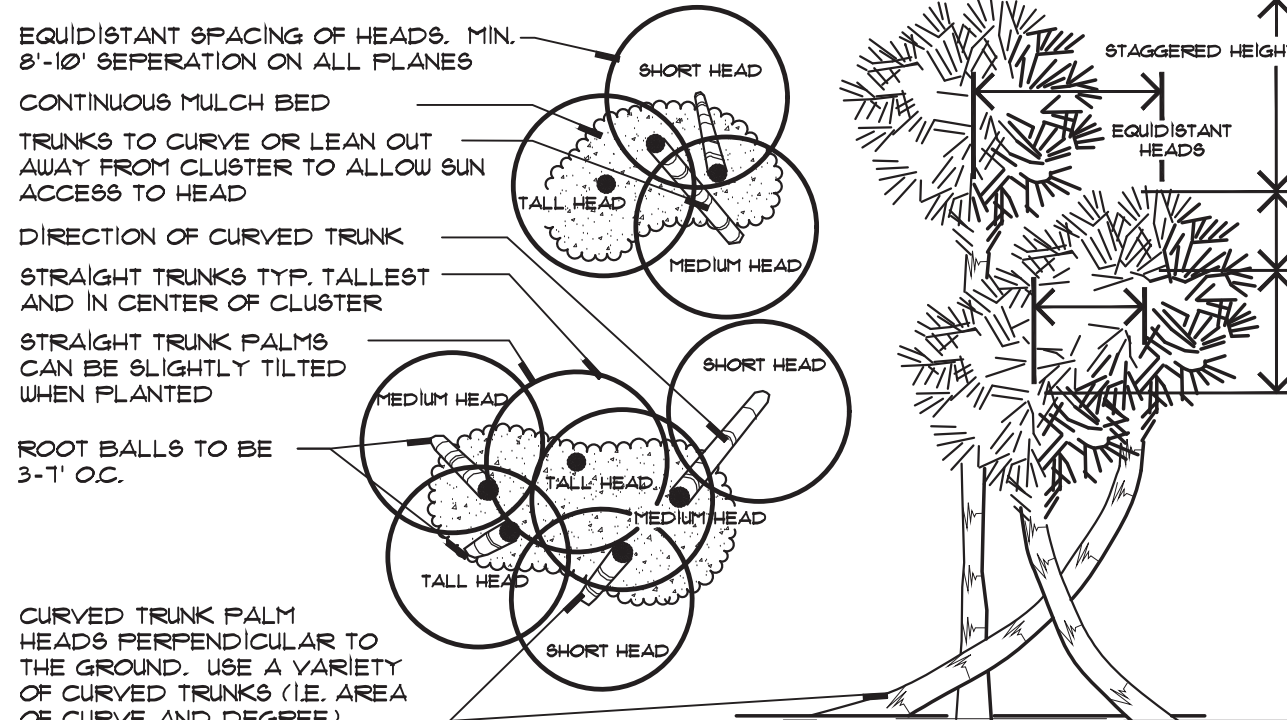
Tree Root Barrier Section N.T.S.



Tree Root Barrier Plan N.T.S.



Shrub & Ground Cover Planting Detail N.T.S.



Typical Cabbage Palm Layout N.T.S.

Specifications - Exterior Plants

1.4: QUALITY ASSURANCE:

SOIL ANALYSIS SHALL BE CONDUCTED BY THE LANDSCAPE CONTACTOR PRIOR TO APPLICATION OF ANY SOIL AMENDMENTS, FERTILIZERS AND BACKFILL MIXTURES. THE LANDSCAPE CONTACTOR SHALL USE A QUALIFIED SOIL TESTING LABORATORY

THE RESULT OF THE SOIL TESTS SHALL BE SUBMITTED TO THE OWNER AND LANDSCAPE ARCHITECT FOR REVIEW PRIOR TO THE APPLICATION OF SAID MATERIALS. ADJUSTMENTS TO THE SOIL AMENDMENTS MAY BE MADE UPON CONSULTATION WITH THE OWNER AND THE LANDSCAPE ARCHITECT.

1.5: DELIVERY, STORAGE AND HANDLING:

PRUNING OF TREES SHALL BE DONE ON SITE AFTER PLANTING FOR DAMAGED LIMBS OR AS DIRECTED TO IMPROVE OVERALL PLANT APPEARANCE. DO NOT REMOVE MORE THAN 15% OF BRANCHES. PRUNING METHODS SHALL FOLLOW STANDARD HORTICULTURAL PRACTICES USING APPROPRIATE TOOLS. LOPPING, SHEARING OR TOPPING OF PLANT MATERIAL WILL BE GROUNDS FOR REJECTION. DAMAGED, SCARRED, FRAYED, SPLIT OR SKINNED BRANCHES, LIMBS OR ROOTS TO BE PRUNED BACK TO LIVE WOOD. THE CENTRAL LEADER OR BUD SHALL BE LEFT INTACT UNLESS SEVERELY DAMAGED.

PRUNE SHRUBS TO REMOVE DAMAGED BRANCHES, IMPROVE NATURAL SHAPE, THIN OUT STRUCTURE AND REMOVE NOT MORE THAN 15% OF BRANCHES.

1.6: WARRANTY:

WARRANT ALL PLANT MATERIAL FOR A PERIOD OF ONE (1) YEAR FROM THE DATE OF FINAL ACCEPTANCE AGAINST DEATH AND UNHEALTHY CONDITION, EXCEPT AS MAY RESULT FROM NEGLIGENCE BY OWNER. DAMAGE BY OTHERS AND UNUSUAL PHENOMENA BEYOND CONTRACTOR'S CONTROL. REPLACEMENTS SHALL BE MADE WITH COMPATIBLE SIZE AND QUALITY OF MATERIAL AT A TIME REQUESTED OR ACCEPTABLE BY THE OWNER OR LANDSCAPE ARCHITECT. PLANT MATERIAL REJECTED DURING THE COURSE OF CONSTRUCTION SHALL BE REMOVED WITHIN FIVE (5) WORKING DAYS AND REPLACED BEFORE THE FINAL INSPECTION FOR COMPLETION WILL BE SCHEDULED. WARRANTY ON REPLACEMENT PLANTS SHALL BE 1 YEAR FROM THE DATE OF FINAL ACCEPTANCE OF THE REPLACEMENTS. ANY DAMAGE TO LANDSCAPE, SODDED OR SEEDED AREAS DURING REPLACEMENT OF PLANT MATERIAL SHALL BE CORRECTED BY THE LANDSCAPE CONTRACTOR.

1.7: MAINTENANCE SERVICE:

MAINTENANCE AND GENERAL CLEAN UP SHALL BE PERFORMED DAILY. MAINTENANCE SHALL INCLUDE BUT NOT BE LIMITED TO WATERING, WEEDING, CULTIVATING, RESTORATION OF GRADE, REMOVAL OF LITTER, MOWING, PRUNING, RESETTling SETTLED PLANTS, REMOVING, REPAIRING OR REPLACING STAKES AND GUYS, PROTECTION FROM INSECTS AND DISEASES, FERTILIZATION AND SIMILAR OPERATIONS AS NEEDED TO ENSURE NORMAL GROWTH AND HEALTHY PLANT MATERIAL. MAINTENANCE SHALL BEGIN AFTER EACH PLANT IS PLANTED AND SHALL CONTINUE FOR NINETY (90) DAYS FROM THE DATE OF FINAL ACCEPTANCE.

1.8: QUANTITIES, LOCATION AND SUBSTITUTIONS:

THE QUANTITIES OF PLANT MATERIALS SHOWN ON PLANS SHALL TAKE PRECEDENCE OVER THE PLANT QUANTITIES ON THE PLANT LIST. THE LANDSCAPE ARCHITECT RESERVES THE RIGHT TO ADJUST THE NUMBER AND LOCATIONS OF THE DESIGNATED TYPES AND SPECIES OF PLANTS TO BE USED AT ANY OF THE LOCATIONS SHOWN. THE OWNER SHALL RECEIVE A CREDIT OR DEBIT FOR THE UNIT PRICE OF THE PLANT MATERIAL. NO SUBSTITUTION OF PLANT MATERIAL TYPES, SPECIFICATIONS OR SIZES WILL BE PERMITTED WITHOUT WRITTEN AUTHORIZATION FROM THE LANDSCAPE ARCHITECT. THE OWNER AND/OR LANDSCAPE ARCHITECT RESERVES THE RIGHT TO NOT ACCEPT PLANT MATERIAL THAT DOES NOT, IN THE OPINION OF THE OWNER AND/OR LANDSCAPE ARCHITECT, MEET THE SPECIFICATIONS HEREIN.

2.1: PLANT MATERIAL:

2.2:

2.3:

PROVIDE SIZES AND SPECIFICATIONS OF PLANTS AS SHOWN ON PLANS OR LISTED ON PLANT LIST. ALL TREES, PALMS, SHRUBS, GROUND COVERS AND OTHER PLANTS SHALL CONFORM TO THE STANDARD OF FLORIDA NO. 1 OR BETTER AS GIVEN IN THE LATEST EDITION OF GRADES AND STANDARDS FOR NURSERY PLANTS BY FLORIDA DEPARTMENT OF AGRICULTURE, PART I AND II. PLANT MATERIAL SHALL ALSO CONFORM TO THE AMERICAN ASSOCIATION OF NURSERYMEN, INC. (ANSI) BULLETIN Z 60.1 - 1990 AND AS REVISED.

SPECIMEN PLANTS SHALL BE FLORIDA FANCY OR BETTER AND SHALL CONFORM TO THE LITERATURE STANDARDS LISTED ABOVE.

2.4: TOP SOIL:

TOPSOIL SHALL BE FRIABLE FERTILE SOIL WITH REPRESENTATIVE CHARACTERISTICS OF AREA SOILS. IT SHOULD BE FREE OF HEAVY CLAY, SILT, STONE, EXCESS LIME, SHELL ROCK, PLANT ROOTS, WEEDS, DEBRIS OR OTHER FOREIGN MATTER. IT SHALL NOT CONTAIN NOXIOUS PLANT GROWTH (SUCH AS BERMUDA, TORPEDO OR NUT GRASS). IT SHALL TEST BETWEEN THE PH RANGE OF 5.0 TO 7.0 UNLESS OTHERWISE SPECIFIED AND CONTAIN NO TOXIC RESIDUE OR SUBSTANCES THAT WOULD ENDANGER PLANT GROWTH. IF TOPSOIL IS NOT AVAILABLE ON SITE, IT SHALL BE IMPORTED FROM LOCAL SOURCES WITH SIMILAR SOIL CHARACTERISTICS TO THAT FOUND AT PROJECT SITE. OBTAIN TOPSOIL ONLY FROM NATURALLY, WELL-DRAINED SITES WHERE TOPSOIL OCCURS IN A DEPTH NOT LESS THAN 4".

2.5: INORGANIC SOIL AMENDMENTS:

SAND SHALL BE CLEAN, SALT-FREE AND CONTAINING NO EXTRANEEOUS MATTER.

MYCORRHIZAL AMENDMENT SHALL BE DIEHARD™ TRANSLANT AS MANUFACTURED BY HORTICULTURAL ALLIANCE OR EQUAL TO WITH THE FOLLOWING INGREDIENTS:

ENDOMYCORRHIZAL FUNGI	HORTA-SORB WATER MANAGEMENT GEL
ECTOMYCORRHIZAL FUNGI	TRICHODERMA
BENEFICIAL BACTERIA	YUCCA PLANT EXTRACTS
HUMIC ACID	VITAMIN B COMPLEX
SOLUBLE SEA KELP	
AMINO ACIDS	

2.6: ORGANIC SOIL AMENDMENTS:

PEAT HUMUS SHALL BE DECOMPOSED PEAT WITH NO IDENTIFIABLE FIBERS OR IF AVAILABLE, MUCK MAY BE SUBSTITUTED AND SHALL BE FREE FROM STONES, EXCESSIVE PLANT ROOTS, DEBRIS OR OTHER FOREIGN MATTER. MUCK SHALL NOT BE OVERLY SATURATED WITH WATER.

2.7: FERTILIZATION:

PROVIDE FERTILIZER UNIFORM IN COMPOSITION, DRY, AND IN A FREE FLOWING CONDITION FOR APPLICATION BY SUITABLE EQUIPMENT, AND DELIVER IN UNOPENED BAGS OR CONTAINERS, EACH FULLY LABELED.

FERTILIZE TREES, SHRUBS AND GROUND COVERS WITH "MILORGANITE" OR AN APPROVED COMPLETE FERTILIZER. APPLY "MILORGANITE" IN A CIRCLE AROUND THE PLANT BEFORE MULCHING. DO NOT TOUCH THE PLANT WITH THE FERTILIZER. WATER IN FERTILIZER AFTER MULCHING. APPLY "MILORGANITE" FERTILIZER AT THE FOLLOWING RATE:

5.00 LBS. OR 14.5 CUPS / PALMS
3.00 LBS. OR 8.70 CUPS / 12'-16" MATERIAL
2.00 LBS. OR 5.80 CUPS / 8'-12" MATERIAL
0.69 LBS OR 2.00 CUPS / 6'-8" MATERIAL
0.19 LBS OR 1/2 CUP / 3 GAL. MATERIAL
0.10 LBS. OR 1/4 CUP / 1 GAL MATERIAL

2.8: MULCHES:

MULCH TO BE APPLIED TO ALL PLANTING BEDS, 3" THICK MIN. PINE STRAW MULCH SHALL BE APPLIED ONLY TO THOSE AREAS AS INDICATED ON THE PLAN. APPLY 6" FLUFFED, 2-3" THICK AFTER COMPACTION.

2.10: PLANTING SOIL MIX:

BACKFILL MIXTURE: 1/2 PARENT SOIL, 1/2 MIXTURE (1/3 SAND, 1/3 TOPSOIL, 1/3 PEAT HUMUS).

3.1: PLANTING BED ESTABLISHMENT:

PREPARATION: PRIOR TO THE INSTALLATION OF PLANTS, THE SITE SHALL BE FREE OF WEEDS, GRASS, SOD, DEBRIS, ROCKS OR OTHER MATERIAL MAKING THE SITE UNPLANTABLE. FOR FINAL ACCEPTANCE ALL PLANTED AREAS SHALL BE WEED FREE.

FINISH GRADING: THE LANDSCAPE CONTRACTOR SHALL COORDINATE THE INSTALLATION AND GRADING OF TOPSOIL, IF NECESSARY, WITH THE GENERAL CONTRACTOR, TO INSURE THE SITE IS AT FINISH GRADE PRIOR TO INSTALLING PLANTS.

3.2: PLANTING TREES:

LAYOUT PLANTS ACCORDING TO LANDSCAPE PLANS. IF A CONFLICT ARISES AS TO THE LOCATION, SPACING OR OTHER CONFLICT, CONTACT THE LANDSCAPE ARCHITECT IMMEDIATELY.

EXCAVATE PIT TO TWO AND ONE-HALF (2 1/2) TIMES THE DIAMETER OF TREE BALL AND NOT LESS THAN 6" DEEPER. COMPACT A LAYER OF BACKFILL MIXTURE IN PIT TO LOCATE COLLAR OF PLANT PROPERLY IN A SLIGHTLY DISHED FINISH GRADE. BACKFILL AROUND BALL WITH BACKFILL MIXTURE, COMPACTED TO ELIMINATE VOIDS AND AIR POCKETS, WATERING THOROUGHLY AS LAYERS ARE PLACED. BUILD 3" HIGH BERM OF SOIL BEYOND EDGE OF EXCAVATION. APPLY FERTILIZER AS SPECIFIED AND THEN MULCH WITH THE TYPE AND THICKNESS SPECIFIED ON PLANT LIST.

GUYS AND STAKE TREES. LESS THAN 3.5" IN CALIPER, IN FOUR DIRECTIONS WITH "ARBORBRACE" NYLON TREE GUYING KIT WITH HARDENED NYLON ANCHOR AND 3/4" 800 LB. POLYPROP UV WEBBING. MODEL (ATG-R) OR APPROVED EQUAL. STAKE TREES IMMEDIATELY AFTER PLANTING. FOR MULTI-TRUNK PLANT MATERIAL, ATTACH GUYS TO FOUR (4) LARGEST LIMBS, CARE MUST BE TAKEN NOT TO MAKE GUYS TOO TIGHT. FOR TREES 3.5" IN CALIPER AND OVER, TREES MUST BE STAKED WITH WOOD 2X4 METHOD. FOLLOW PALM STAKING DETAIL FOR REQUIREMENTS. THE LANDSCAPE ARCHITECT RESERVES THE RIGHT TO ELIMINATE GUYING OR STAKING. THE OWNER SHALL RECEIVE A CREDIT OR DEBIT FOR THE UNIT PRICE OF THE GUYING OR STAKING. THE LANDSCAPE CONTRACTOR SHALL REMOVE BRACING IN ONE YEAR.

3.2: PLANTING SHRUBS:

EXCAVATE PITS OR TRENCH TWO (2) TIMES DIAMETER OF BALLS OR CONTAINERS, AND 3" DEEPER THAN REQUIRED FOR POSITIONING AT PROPER HEIGHT. COMPACT A LAYER OF BACKFILL MIXTURE IN BOTTOM BEFORE PLACING PLANTS. CONTAINER GROWN MATERIALS SHALL BE PLANTED WITH 48 HOURS AFTER DELIVERY TO SITE. PLACE PLANT IN PIT AND BACKFILL AROUND PLANTS WITH BACKFILL MIXTURE, COMPACTED TO ELIMINATE VOIDS AND AIR POCKETS. WATER THOROUGHLY AS LAYERS ARE PLACED. FORM A 3" HIGH BERM OF SOIL BEYOND THE EDGES OF EXCAVATION. APPLY FERTILIZER AS SPECIFIED AND THEN MULCH WITH THE TYPE AND THICKNESS SPECIFIED ON PLANT LIST.

3.4: PLANTING GROUNDCOVERS:

LOOSEN SUBGRADE TO DEPTH OF 4" IN AREAS WHERE TOPSOIL HAS BEEN STRIPPED, AND SPREAD BACKFILL MIXTURE.

SPACE PLANTS AS OTHERWISE INDICATED. DIG HOLES LARGE ENOUGH TO ALLOW FOR SPREADING OF ROOTS. COMPACT BACKFILL TO ELIMINATE VOIDS, AND LEAVE GRADE SLIGHTLY DISHED AT EACH PLANT. WATER THOROUGHLY. APPLY FERTILIZER AS SPECIFIED AND THEN MULCH WITH THE TYPE AND THICKNESS SPECIFIED ON PLANT LIST, LIFTING PLANT FOLIAGE ABOVE MULCH. MULCH SHALL BE SPREAD BEFORE PLANTING PLANTS IN POTS LESS THAN 1 GALLON SIZE (4", LINERS, ETC.).

Specifications - Lawns and Grasses

2.1: PRODUCTS:

SOD SHALL MEET AMERICAN SOD PRODUCES ASSOCIATION STANDARDS FOR NURSERY GROWN SOD FOR THICKNESS OF CUT, PAD SIZE, STRENGTH OF SECTIONS, MOISTURE CONTENT AND THATCH. SOD SHALL BE GUARANTEED TO BE UNIFORM IN COLOR, LEAF TEXTURE, AND SHOOT DENSITY AND FREE OF WEEDS, DISEASE, FUNGUS, INSECTS OR OTHER IMPERFECTIONS AND SUFFICIENTLY KNITTED TO SUSTAIN GROWTH. SOD SHALL BE MOWED FOR FINAL ACCEPTANCE.

2.3: FERTILIZER:

FERTILIZE TURF AREAS WITH TYPE 1 FERTILIZER, COMPLYING WITH THE STATE FERTILIZER LAWS. THE FERTILIZER SHALL BE CHEMICALLY DESIGNATED WITH 12-8-8. PROVIDE AT LEAST 50% OF THE PHOSPHORIC ACID FROM NORMAL SUPER PHOSPHATE OR AN EQUIVALENT SOURCE PROVIDING A MINIMUM OF TWO UNITS OF SULFUR. THE AMOUNTS OF SULFUR AND ALL OTHER CHEMICAL SHALL BE INDICATED ON THE QUANTITATIVE ANALYSIS CARD ATTACHED TO THE UNOPENED BAG.

3.1: LAWN PREPARATION:

LOOSEN SUBGRADE TO DEPTH OF 4" AND GRADE WITH TOPSOIL PROVIDED ON SITE OR IMPORTED TO FINISH DESIGN ELEVATIONS. ROLL PREPARED LAWN SURFACE. WATER THOROUGHLY, BUT DO NOT CREATE MUDDY SOIL CONDITION.

FERTILIZE SOIL AT THE RATE OF APPROXIMATELY 10 LBS. PER 1000 S.F. SPREAD FERTILIZER OVER THE AREA TO RECEIVE GRASS BY USING AN APPROVED DISTRIBUTION DEVICE CALIBRATED TO DISTRIBUTE THE APPROPRIATE QUANTITY. DO NOT FERTILIZE WHEN WIND VELOCITY EXCEEDS 15 M.P.H. THOROUGHLY MIX FERTILIZER INTO THE TOP 2" OF TOPSOIL.

3.2: SODDING:

SOD TYPE SPECIFIED ON PLANT LIST SHALL BE MACHINE STRIPPED NOT MORE THAN 24 HOURS PRIOR TO LAYING.

LAY SOD STRIPS WITH TIGHT JOINTS, DO NOT OVERLAP. STAGGER STRIPS TO OFFSET JOINTS IN ADJACENT COURSES. WORK SIFTED SOIL MIX INTO MINOR CRACKS BETWEEN PIECES OF SOD AND REMOVE EXCESS SOIL DEPOSITS FROM SODDED AREAS. SOD ON SLOPES GREATER THAN 3:1 SHALL BE STAKED IN PLACE. ROLL OR TAMP LIGHTLY AND WATER THOROUGHLY WITH A FINE SPRAY IMMEDIATELY AFTER PLANTING.

Landscape Certification

LANDSCAPE CERTIFICATION: THE LANDSCAPE ARCHITECT SHALL PROVIDE FINAL CERTIFICATION TO THE OWNER AND MUNICIPALITY THAT PLANTS ARE INSTALLED PER THE DESIGN PLAN, DETAILS AND SPECIFICATIONS. ANY CHANGES TO THE PLAN WILL NEED TO HAVE THE LANDSCAPE ARCHITECT APPROVAL PRIOR TO INSTALLATION. CONFORMITY TO FLORIDA GRADE #1 IN THE ROOT BALL REQUIRES THE LANDSCAPE ARCHITECT TO INSPECT TREES PRIOR TO INSTALLATION AT THE SITE. IT IS THE RESPONSIBILITY OF THE OWNER/GENERAL CONTRACTOR/LANDSCAPE CONTRACTOR FOR ORGANIZING INSPECTIONS OF PLANT MATERIAL PRIOR TO INSTALLATION.

General Notes:

SOD TO BE BAHIA ARGENTINE SOD UNLESS OTHERWISE NOTED ON PLANS

ALL PLANTING AREAS SHALL RECEIVE 100% COVERAGE FROM A FULLY AUTOMATIC IRRIGATION SYSTEM EQUIPPED WITH A RAIN SENSOR.

ALL CONSTRUCTION DEBRIS & HARDPAN TO BE REMOVED FROM PLANTING BEDS TO A DEPTH OF 30"

UTILITIES:

ABOVE AND BELOW GROUND UTILITIES SHALL BE VERIFIED AND LOCATED BY THE LANDSCAPE CONTRACTOR PRIOR TO COMMENCING WORK IN THE PROJECT AREA. IF UTILITY PLANS ARE AVAILABLE, THE CONTRACTOR SHALL EXAMINE THEM AND BRING ANY AND ALL CONFLICTS TO THE ATTENTION OF THE OWNER AND/OR LANDSCAPE ARCHITECT. WHEN WORKING IN AN AREA WHERE KNOWN UTILITIES EXIST, UTILITY LOCATIONS MAY NEED TO BE STAKED BY A SURVEYOR OR THE UTILITY COMPANIES. THE CONTRACTOR HAS THE OPTION TO CONTACT 811 TO SCHEDULE LOCATION OF THE UTILITIES WHICH SUBSCRIBE TO THEIR SERVICE.



Know what's below.
Call before you dig.

© Copyright 2024 All Rights Reserved

2GHO

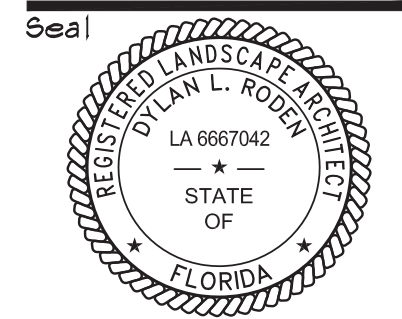
LANDSCAPE ARCHITECTURE
& PLANNING

1907 Commerce Lane
Suite 101
Jupiter, Florida 33458
561-575-9557
www.2GHO.com

Phase 3C - Clubhouse Tract - Tract R11-L
Golf Clubhouse Landscape Plans

Discovery PUD
Martin County, Florida

Designed: _____ DLR
Drawn: _____ GGG/EOM/MTH/DLR
Approved: _____
Date: 11/13/24
Job no: 21-0707.3
Revisions: 3/27/25



LA 0000530
Sheet Title:
Landscape
Specification
Sheet

Scale: N.T.S.

Sheet No.

LP-201

21-0707.3