



GOLDEN GATE

MARTIN COUNTY
Community Redevelopment Agency

LANDSCAPE VISION PLAN UPDATE

Golden Gate NAC –
June 1, 2026





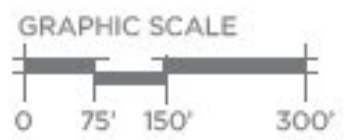
MARTIN COUNTY
Community Redevelopment Agency

NEIGHBORHOOD MAP



Key

- Project Site
- El Camino Site
- Key Community Points of Interest
- Crosswalk





MARTIN COUNTY
Community Redevelopment Agency

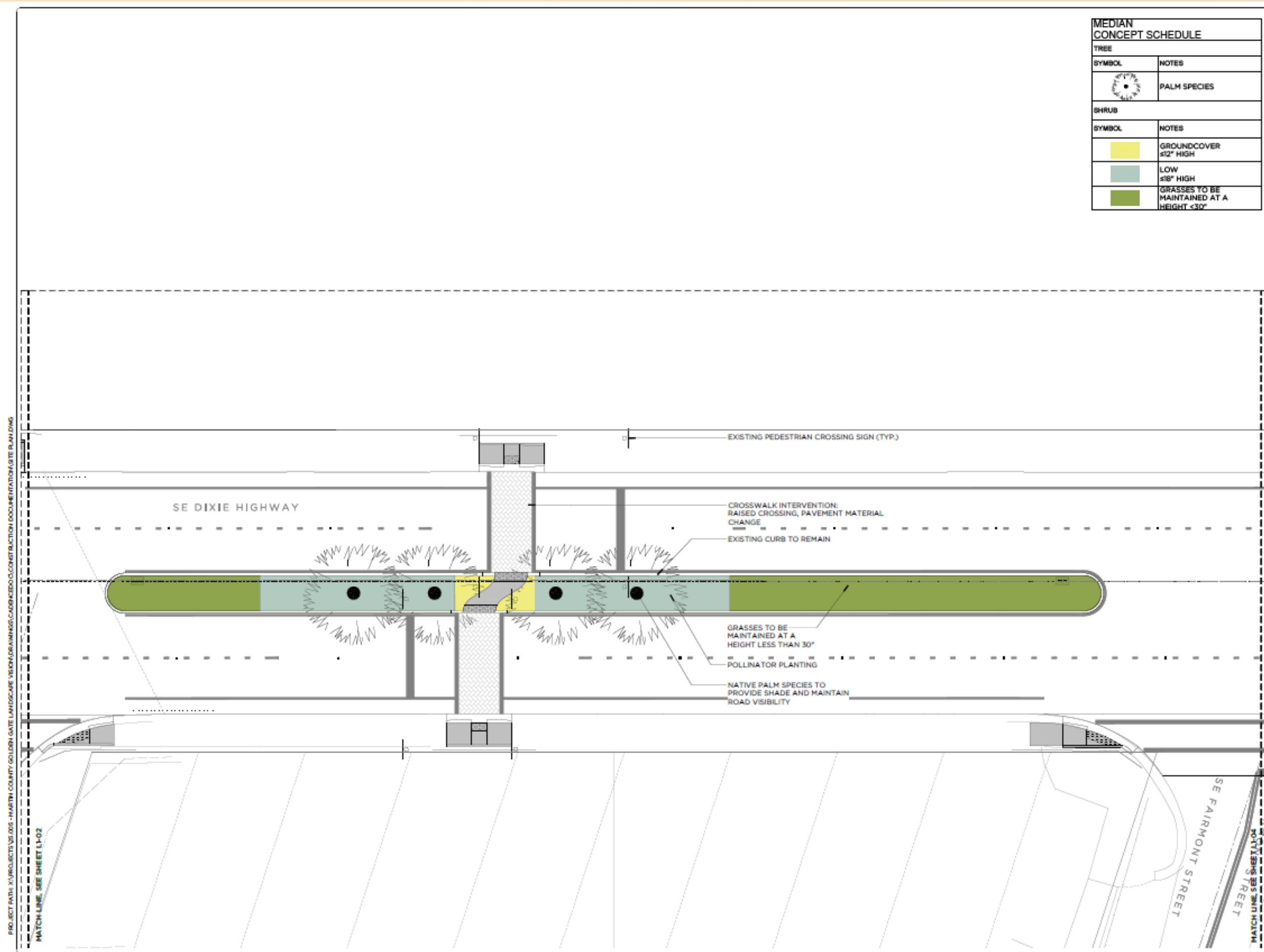
DIXIE HIGHWAY MEDIANS

MEDIAN CONCEPT SCHEDULE	
TREE	
SYMBOL	NOTES
	PALM SPECIES
SHRUB	
SYMBOL	NOTES
	GROUNDCOVER ≤12" HIGH
	LOW ≤18" HIGH
	GRASSES TO BE MAINTAINED AT A HEIGHT <30"



NOT FOR CONSTRUCTION

Project:
MARTIN COUNTY
GOLDEN GATE LANDSCAPE VISION
DIXIE HWY STUART, FL 34996



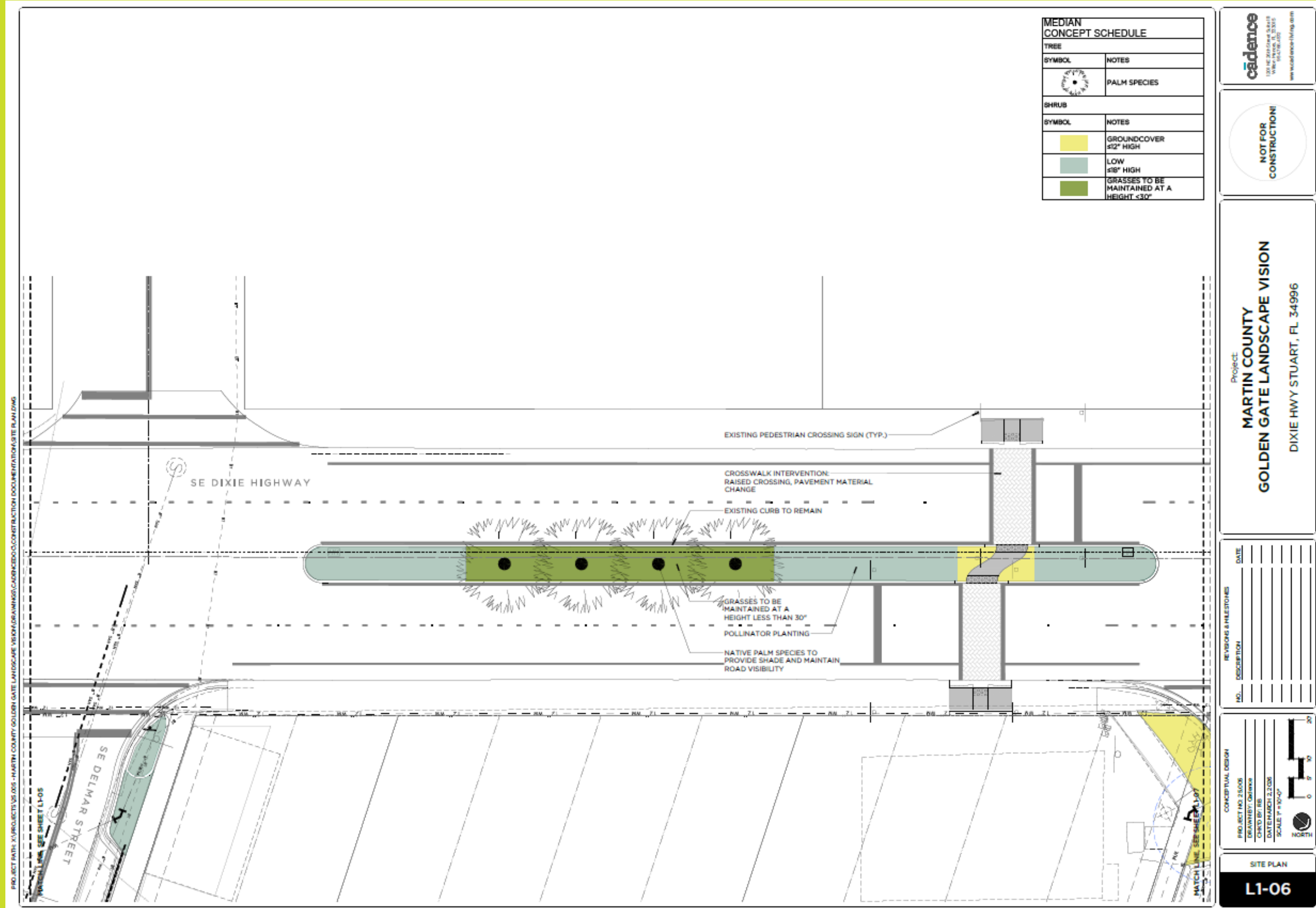
NO.	REVISIONS & MILESTONES	DATE

CONCEPTUAL DESIGN

PROJECT NO. 21008
DRAWN BY: Orlene
CHECK BY: JIB
DATE: MARCH 2, 2020
SCALE: 1" = 30'-0"

SITE PLAN
L1-03

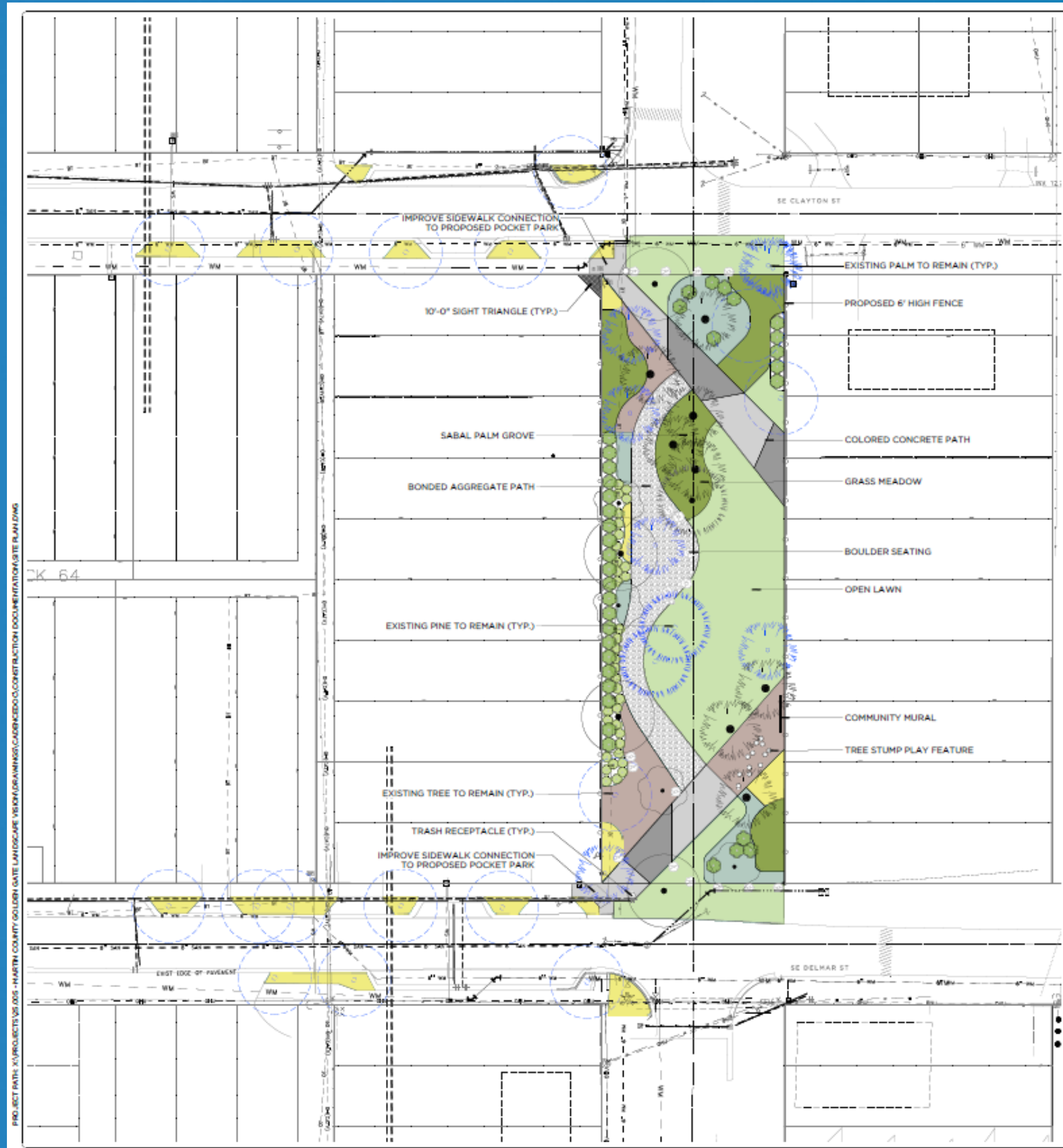
DIXIE HIGHWAY MEDIANS





MARTIN COUNTY
Community Redevelopment Agency

BIRCH AVENUE POCKET PARK



POCKET PARK CONCEPT SCHEDULE

TREE	
SYMBOL	NOTES
	MEDIUM OR LARGE TREE SPECIES
	SMALL OR MEDIUM TREE SPECIES
	PALM SPECIES
	PINE SPECIES
	TREE TO REMAIN
	PALM TO REMAIN
	PINE TO REMAIN

SHRUB	
SYMBOL	NOTES
	HIGH ≥30' HIGH
	MEDIUM 15'-30' HIGH
	GROUNDCOVER ≤12" HIGH
	LOW ≤18" HIGH
	GRASSES
	LAWN
	MULCH 2" MIN DEPTH

SITE ELEMENTS	
SYMBOL	NOTES
	BOULDER 3' MIN DIAMETER HEIGHTS VARY 18"-30"
	STUMPS 2' MIN DIAMETER HEIGHTS VARY 16"-24"
	TRASH RECEPTACLES
	6' HIGH FENCE



NOT FOR CONSTRUCTION

Project:
MARTIN COUNTY
GOLDEN GATE LANDSCAPE VISION
DIXIE HWY STUART, FL 34996

NO.	DESCRIPTION	DATE

CONCEPTUAL DESIGN
PROJECT NO. 21008
DRAWN BY: DMH/MS
CHECKED BY: BE
DATE: MARCH 22, 2021
SCALE: 1" = 30'-0"
NORTH

PROJECT PATH: X:\PROJECTS\05 - MARTIN COUNTY GOLDEN GATE LANDSCAPE VISION\DRAWINGS\CADENCE\CONSTRUCTION DOCUMENTS\SITE PLAN.DWG



MARTIN COUNTY
Community Redevelopment Agency

QUESTIONS?

Joy Puerta

Office of Community Development

 **772-288-5908**

 **jpuerta@martin.fl.us**