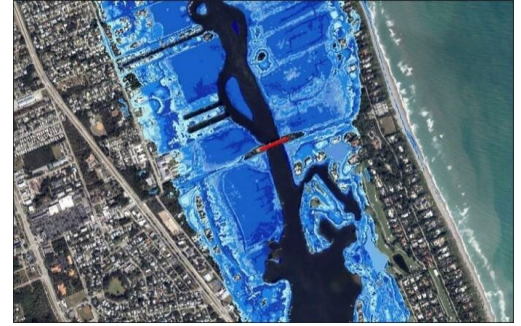


CR 708 Bridge Scour Protection Amended 06/23/2026

Category	Non-Concurrency
Project Number	105314
Location	Hobe Sound
District	3
Project Limits	Hobe Sound Bridge
Related Projects	N/A
Lead Department/Division	Public Works/Capital Projects
Year Project Initiated	2020
Project Life Cycle	30
Resilience Requirements:	2040 Vulnerability



DESCRIPTION

The Hobe Sound Bridge Scour Protection Project will include the construction of scour protection. Scour protection will consist of high strength geogrid rock-filled containers for piling at intermediate bridge bents and at the bascule piers, ditch lining rip rap rock, and geotextile filter fabric underlay. A new 200 gal. emergency generator will be installed on land for utilization during storms and hurricanes.

BACKGROUND

The Hobe Sound Bridge is a bascule bridge in Martin County along the Atlantic Intracoastal Waterway, also known as the M-95 marine highway. It provides vehicular and pedestrian access between Hobe Sound and Jupiter Island and serves as the primary route for residents and the local workforce. About 6,800 vehicles cross the bridge daily during season. The bridge opens on demand for marine vessel traffic.

PROJECT ORIGATION

Infrastructure Needs

JUSTIFICATION

The funding will provide for improvements to public facilities that eliminate public hazards, aid in the renovation of worn-out facilities that contribute to achieving or maintaining standards for levels of service adopted in the Comprehensive Growth Management Plan, and significantly reduce the operating cost of providing a service or facility or otherwise mitigate impacts of public facilities on future operating budgets.

Expenditures	Total	To Date		Funded					Unfunded
				FY26	FY27	FY28	FY29	FY30	FY31-35
Construction/Capital Maintenance	3,682,000	0		3,682,000	0	0	0	0	0
Design/Planning	251,000	251,000		0	0	0	0	0	0
Expenditure Total	3,933,000	251,000		3,682,000	0	0	0	0	0

Revenues	Total	To Date	Carryover	FY26	FY27	FY28	FY29	FY30	FY31-35
Road MSTU	299,000	251,000	48,000	0	0	0	0	0	0
FPL Franchise Fee	872,000	0	872,000	0	0	0	0	0	0
Grant	2,762,000	0	0	2,762,000	0	0	0	0	0
Revenue Total	3,933,000	251,000	920,000	2,762,000	0	0	0	0	0

Total Unfunded: 0

OPERATING BUDGET IMPACT

Bridge scour maintenance will be minimal.