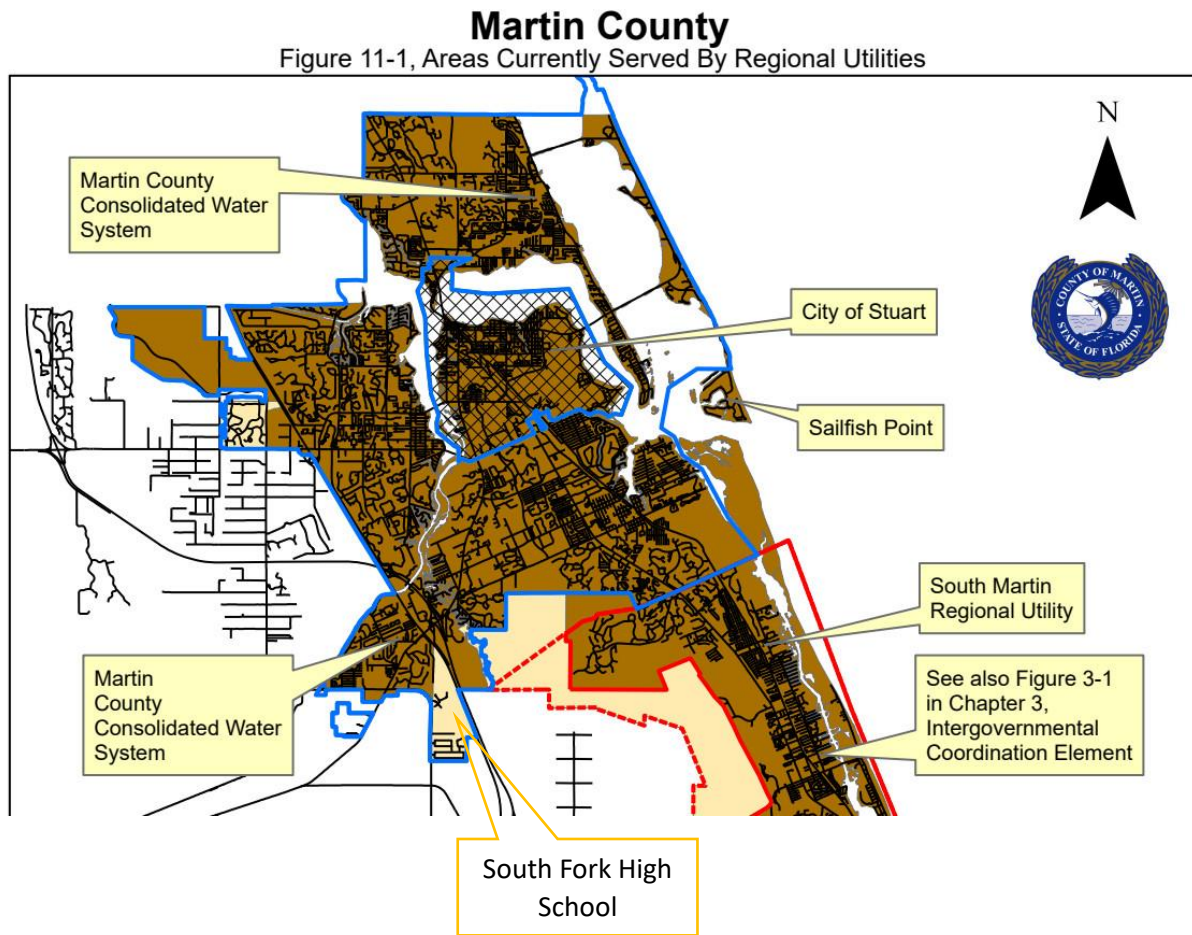


Scrivener's Error

GMD Staff Analysis October 8, 2024

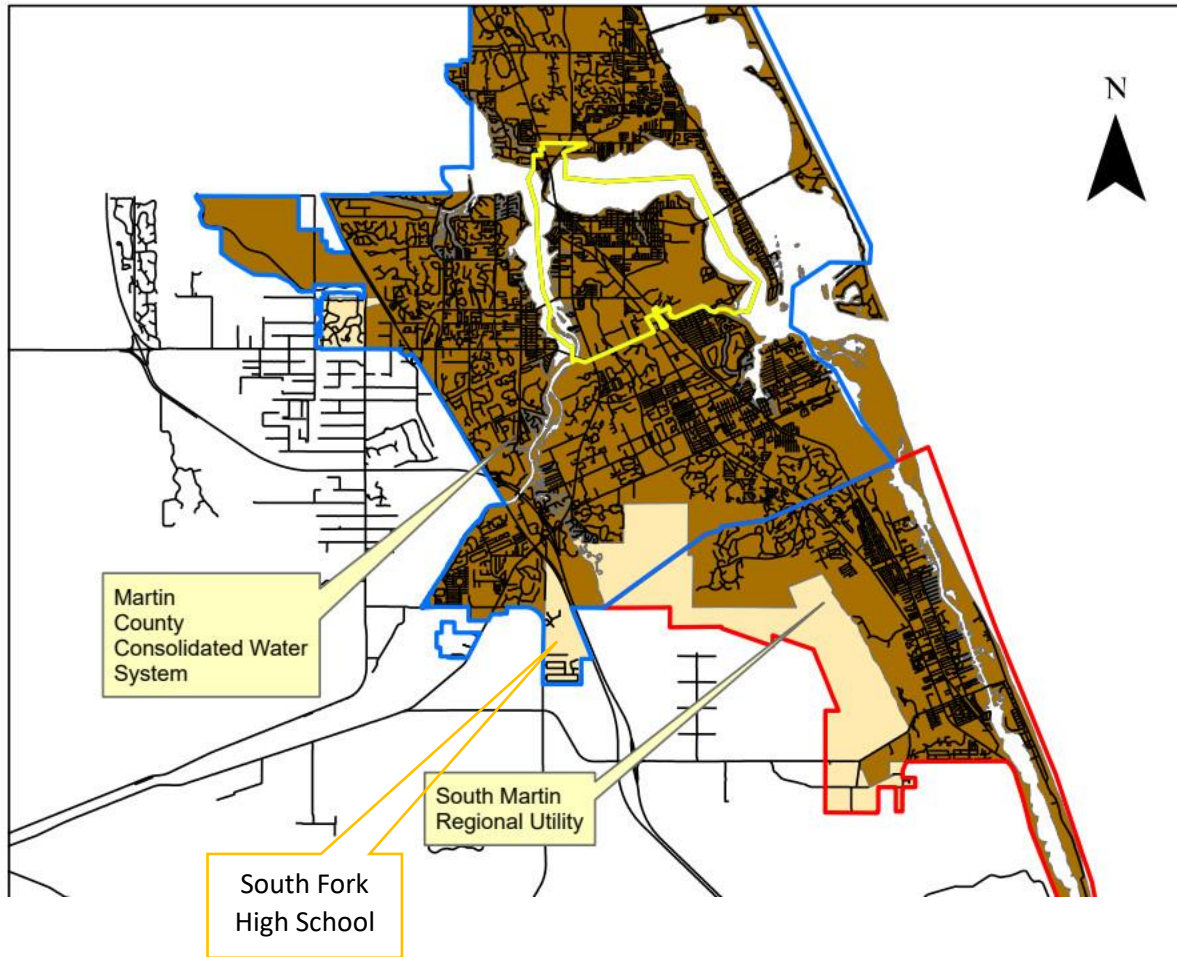
Figures 11-1 and 11-2, effective for a number of years, contain scrivener's errors. Both include South Fork High School and an additional area of the Secondary Urban Service District that does not receive water and sewer service and has never been approved to receive water and sewer service. The blue outline in the following maps identifies areas where Martin County Utilities provides or potentially could provide regional water and sewer service.



In Figure 11-1 above the blue outline includes more than South Fork High School.

Martin County

Figure 11-2, Potential Service Areas



In Figure 11-2 above the blue outline includes more than South Fork High School.

Figure 11-1 Areas Currently Served by Regional Utilities with the correction made. The blue outline only extends to the south property line of South Fork High School.

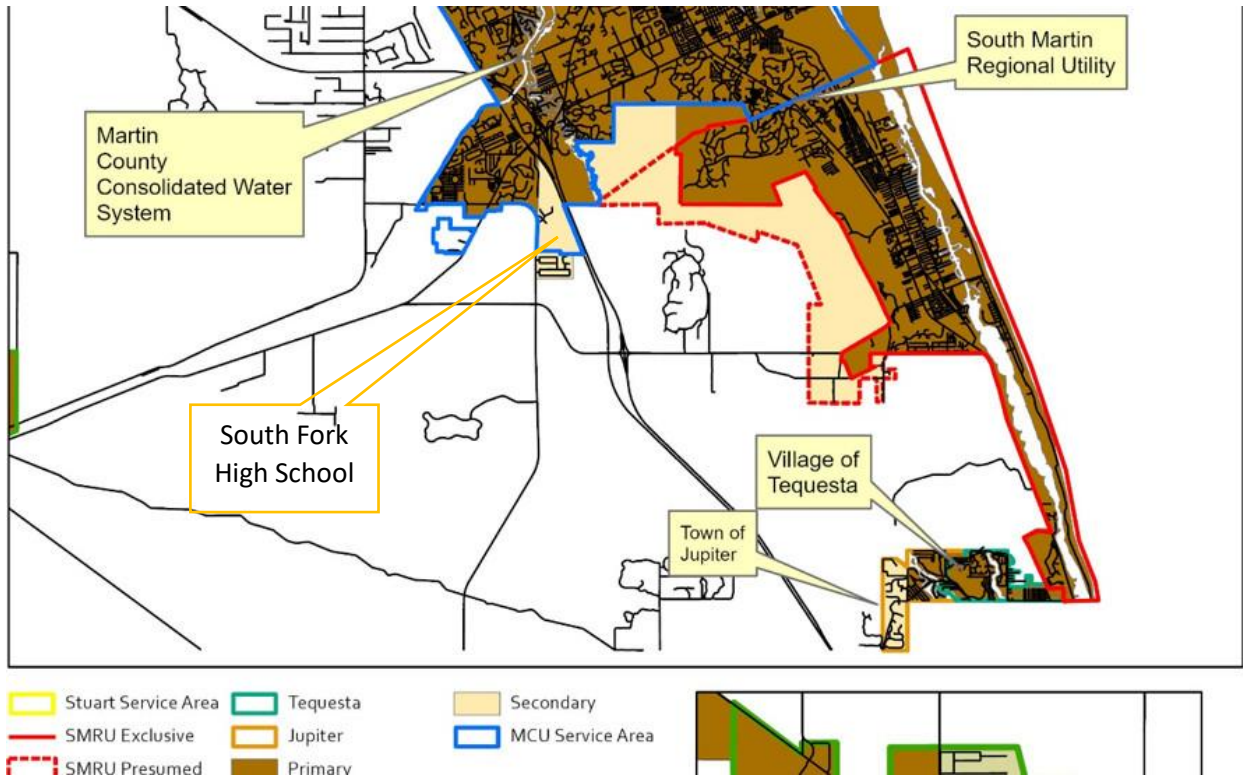


Figure 11-2, Potential Service Areas with the correction made. The blue outline only extends to the south property line of South Fork High School.

