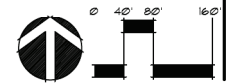


Phase 4

LP-100 OVERALL LANDSCAPE PLAN
LP-101-108 PHASE 4 LANDSCAPE PLAN SHEETS
LP-200 PLANT LIST SHEET
LP-201 LANDSCAPE SPECIFICATIONS & DETAILS



Adventure Park

Phase 4 - Tract R10

Designed: _____ DLR
 Drawn: _____ DLS
 Approved: GGG/EQM/MTM/DLR
 Date: _____ 07/02/25
 Job no. _____ 21-0707.7
 Revisions: _____



Digitally signed
by Dylan L.
Roden
Date:
2025.07.02
16:02:41-04'00'

Sheet Title:
Overall
Landscape
Plan

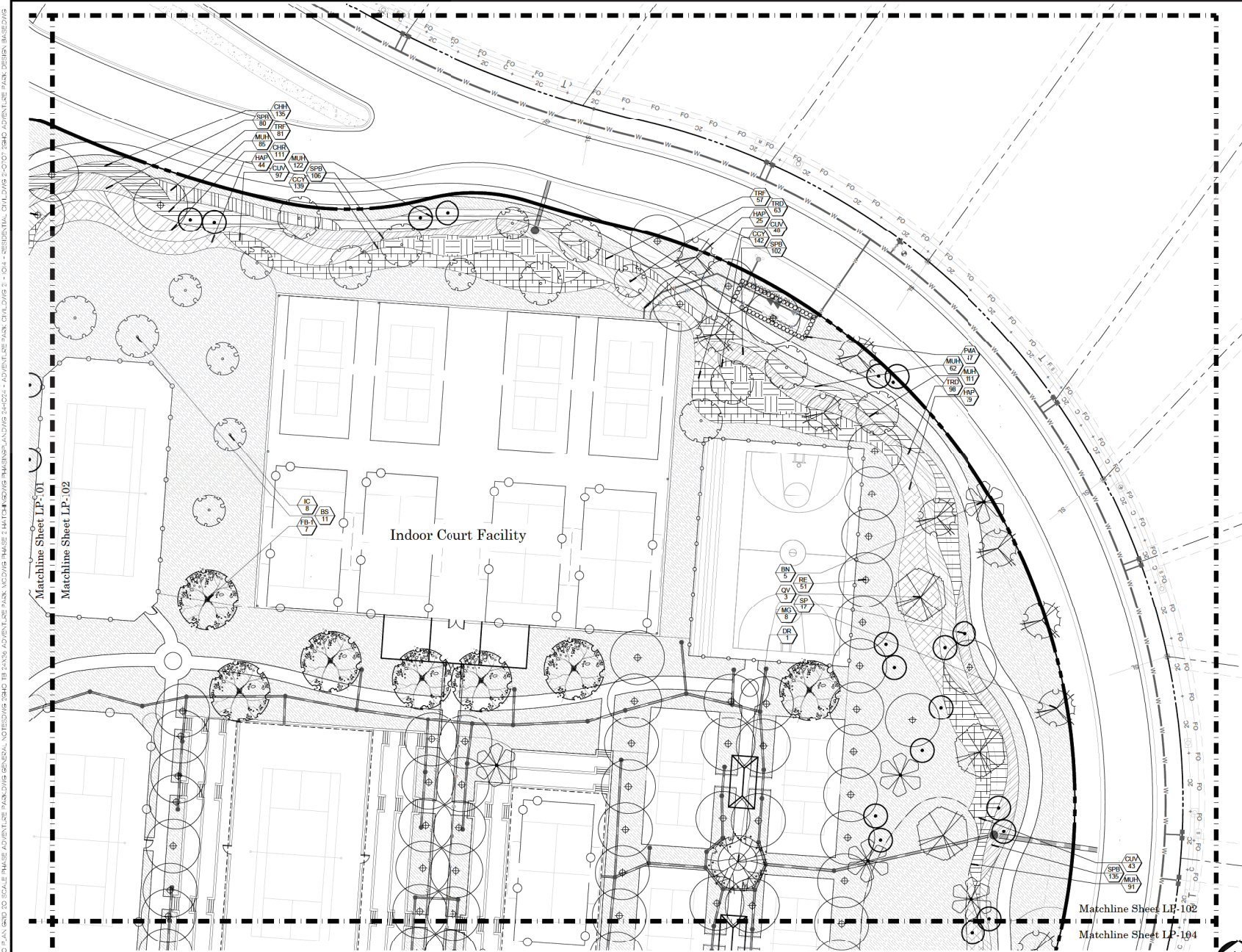
Scale: 1"=80'

Sheet No.

LP-100

21-0707.7

FILE: \ATLANTIS\PROJECTS\ADVENTURE PARK\MARTIN COUNTY\PHOTO\ATLANTIS\LANDSCAPE\PLAN 3\ADVENTURE PARK\DWG
PLOTED: 1/2/19 AT 3:55PM BY DULAN
DWG: 2-10701.1 AND 2-10701.2



© Copyright 2014 All Rights Reserved
2GHO
LANDSCAPE ARCHITECTURE
& PLANNING

1907 Commerce Lane
Suite 101
Jupiter, Florida 33458
561-575-9607
www.2gho.com

Phase 4 - Tract R10
Adventure Park
Martin County, Florida

Designed: RLS
Drawn: RLS
Approved: GGG/SGM/MT/HUS
Date: 07/02/18
Job no: 21-0701.2
Revisions:



Digitally signed
by Dylon L.
Rosten
Date: 2025.07.02
18:02:43-0400

LA 2020530
Sheet Title:
**Landscape
Development
Plan**

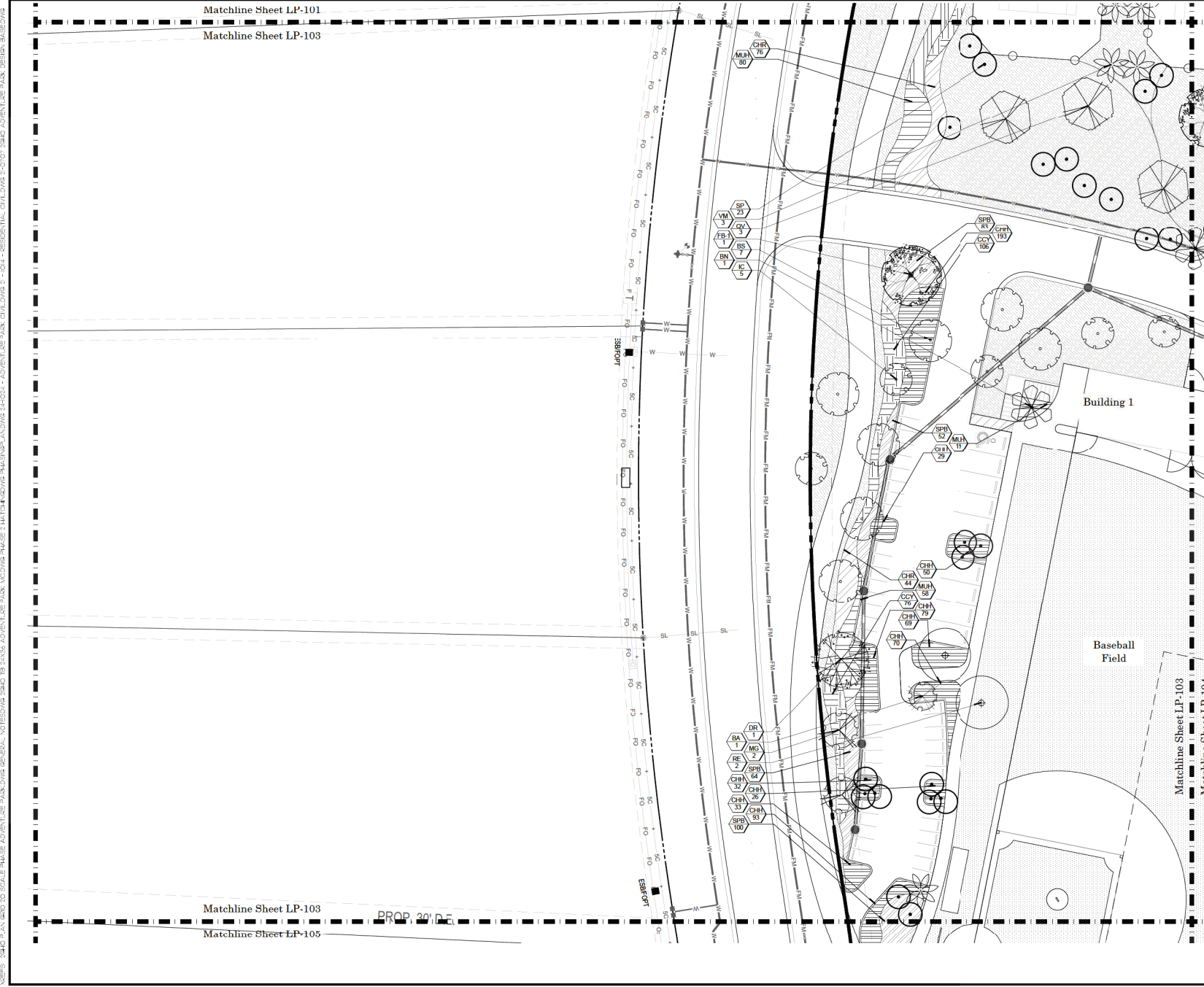
Scale: 1"=20'

Drawn: RLS

LP-102

21-0701.1

FILE: ATLANTIC FIELD\DRAWINGS\01-GENERAL\ADVENTURE PARK\MARTIN COUNTY PLANS\01-01-ATLANTIC FIELD\LANDSCAPE PLAN 3-ADVENTURE PARK.DWG
PLOT: 1/2/19 AT 3:54 PM BY: JUAN
PLOT: 1/2/19 AT 3:54 PM BY: JUAN



© Copyright 2014 All Rights Reserved
2GHO
LANDSCAPE ARCHITECTURE
& PLANNING
1907 Commerce Lane
Suite 101
Jupiter, Florida 33458
561-575-9607
www.2GHO.com

Phase 4 - Tract R10
Adventure Park
Martin County, Florida

Designed: RLS
Drawn: RLS
Approved: GGG/SGM/MT/HDS
Date: 07/02/20
Job no: 21-0107.1
Revisions:

Seal

Digitally signed
by Dyan L.
Rosten
Date:
2020.07.02
16:02:44-04'00'

Sheet Title:
**Landscape
Development
Plan**

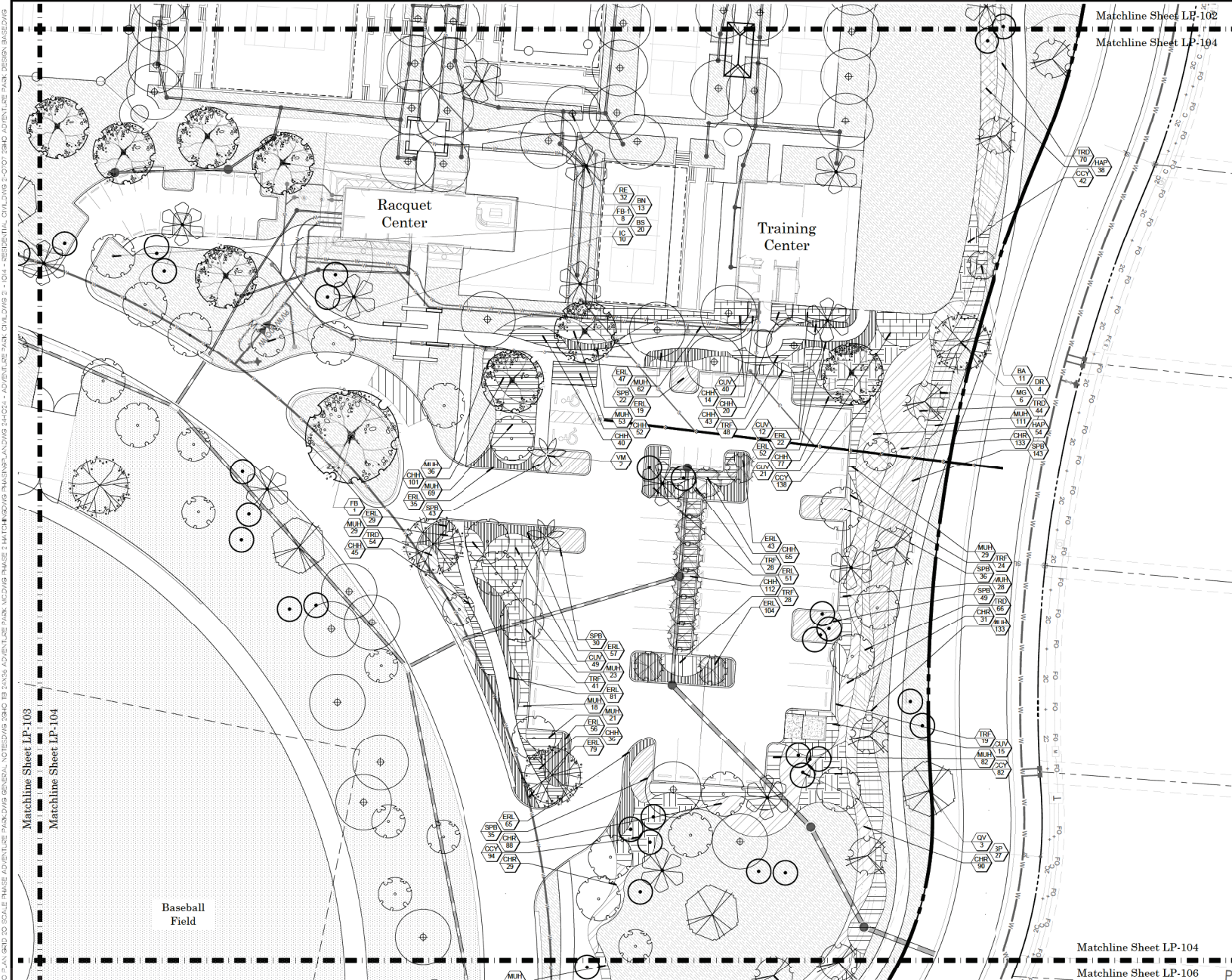
Scale: 1"=20'

Drawn: HDS

LP-103

21-0107.1

FILE: ATLANTIC FIELD\DRAWINGS\GENERAL\ADVENTURE PARK\MARTIN COUNTY PLAN\0707 ATLANTIC FIELD\LANDSCAPE PLAN 3 ADVENTURE PARK.DWG
PLOTTED: 1/2/25 AT 3:54PM BY: DULAN
DWG: 25070701.DWG AND 25070702.DWG



© Copyright 2024 All Rights Reserved
2GHO
LANDSCAPE ARCHITECTURE
& PLANNING

1907 Commerce Lane
Suite 101
Jupiter, Florida 33458
888-575-9607
www.2GHO.com

Phase 4 - Tract R10

Adventure Park

Martin County, Florida

Designed: RLS
Drawn: RLS
Approved: GGG/SGM/MT/HUS
Date: 07/02/25
Job no: 25-0707.2
Revisions:

Seal: 
Digitally signed
by Dylan L.
Rosten
Date:
2025.07.02
16:02:46-04'00'

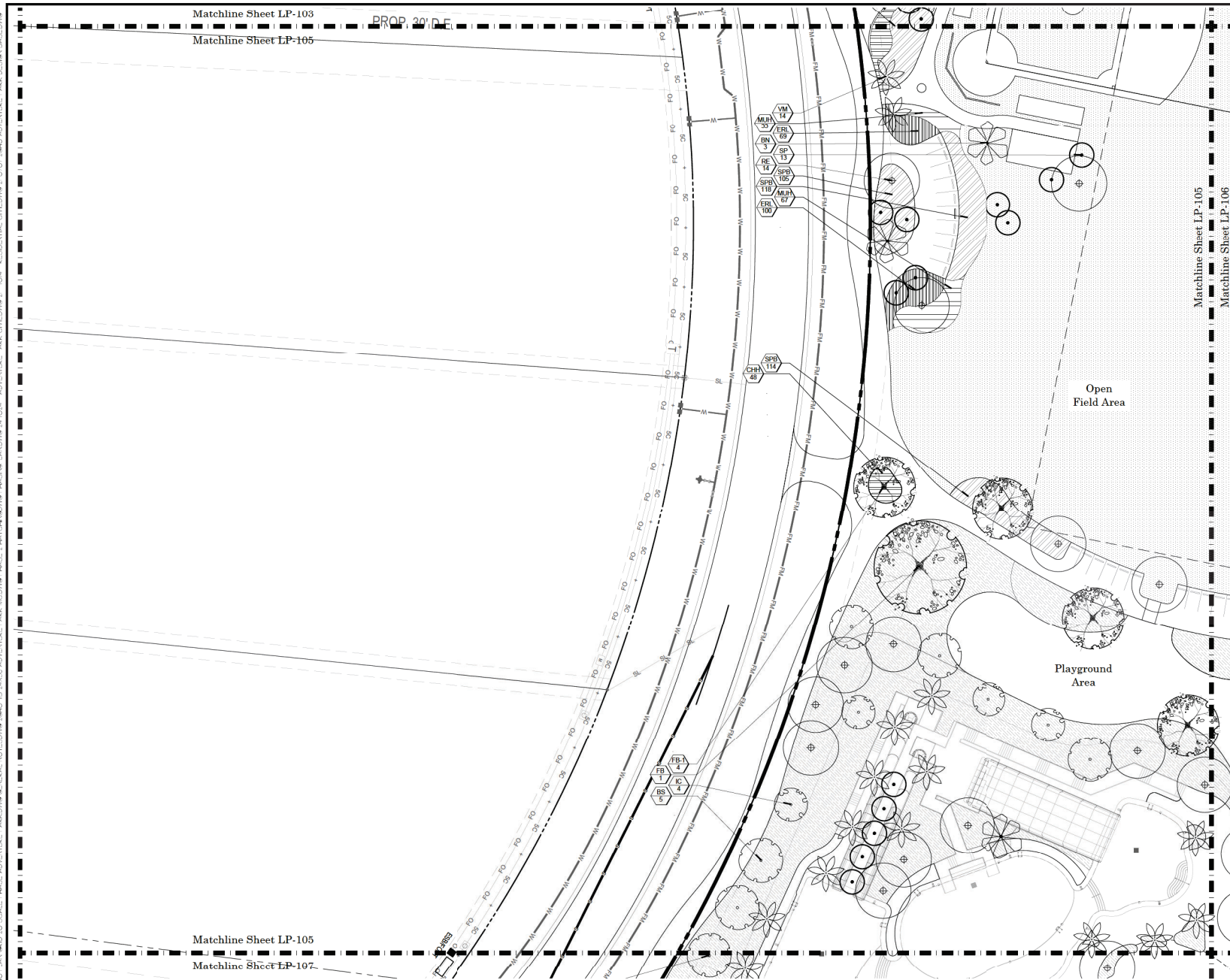
Sheet Title:
**Landscape
Development
Plan**

Scale: 1"=20'

Drawn: RLS

LP-104

21-0707.1



© Copyright 2024 All Rights Reserved

ZGTO

LANDSCAPE ARCHITECTURE
& PLANNING

1907 Commerce Lane
Suite 101
Jupiter, Florida 33458
561-575-9557
www.2GHO.com

Phase 4 - Tract R10

Adventure Park

Designed: _____
 Drawn: _____
 Approved: GGG/EOM/MTH/D
 Date: 07/02/
 Job no. 21-0703
 Revisions: _____

Digitally signed
by Dylan L
Roden
Date:
2025.07.02
16:02:47-04'00'

LA 0000530
Sheet Title:
Landscape
Development
Plan

Scale: 1"=20'

Street No.

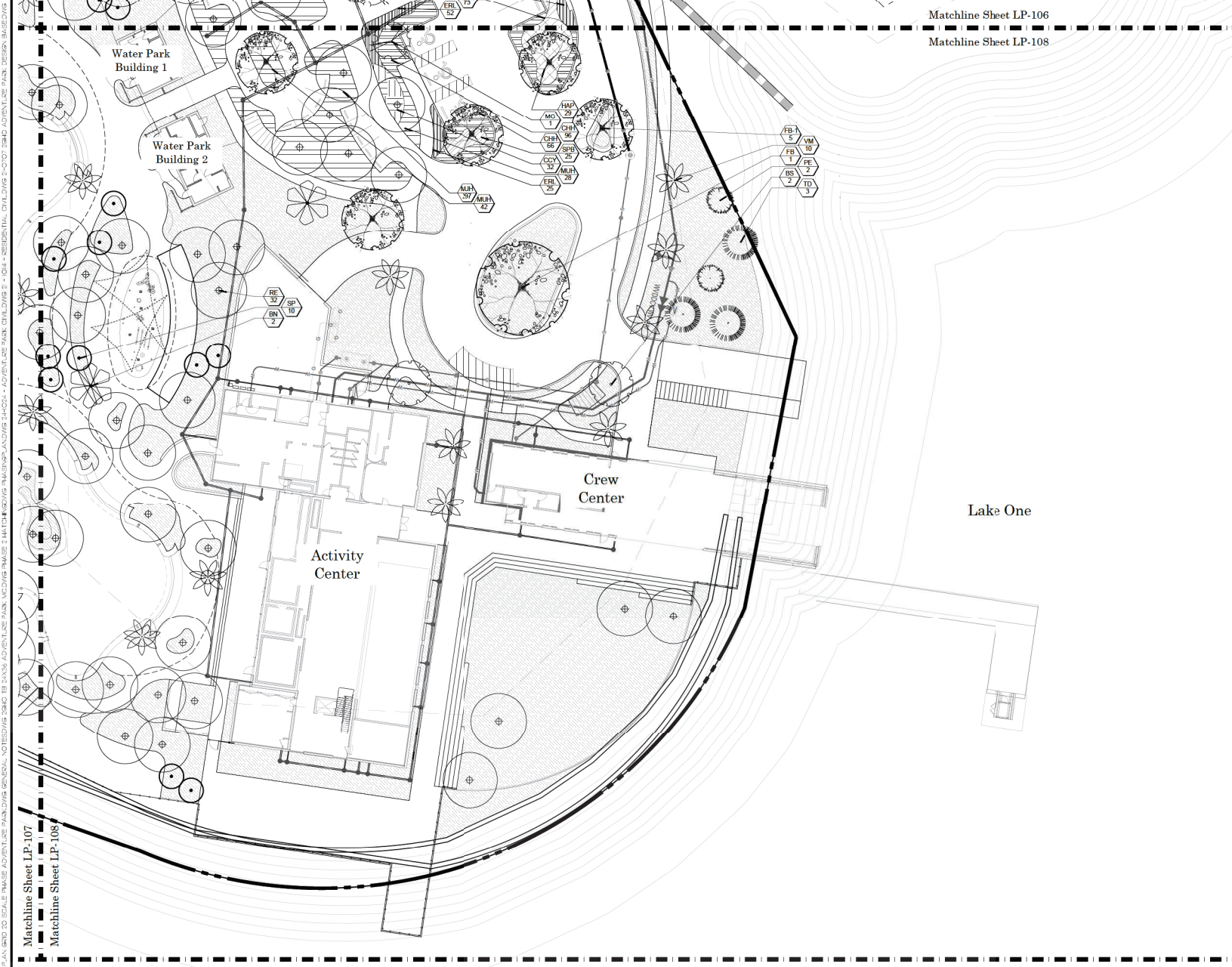
LP-105

21-0707.1



1-0707.7

FILE: N:\ATLANTIC\PROJECTS\LANDSCAPE\ADVENTURE PARK\MARTIN COUNTY\PLAN\0707 ATLANTIC FIELD\LANDSCAPE PLAN 3 ADVENTURE PARK.DWG
PLOTTED: 1/2/19 AT 3:55:54 PM BY: DLAN
PLOT: 3:56:01 PM AND 3:56:02 PM



Matchline Sheet LP-106
Matchline Sheet LP-108

© Copyright 2014 All Rights Reserved
2GHO
LANDSCAPE ARCHITECTURE
& PLANNING
1907 Commerce Lane
Suite 101
Jupiter, Florida 33458
561-575-9607
www.2GHO.com

Phase 4 - Tract R10
Adventure Park
Martin County, Florida

Designed: RLS
Drawn: RLS
Approved: GGG/SGM/MT/HD/SL
Date: 07/02/25
Job no: 24-0007.2
Revisions:



Digitally signed
by Dyan L.
Rosten
Date:
2025.07.02
18:02:51-04'00'

LA 20250530
Sheet Title:
**Landscape
Development
Plan**

Scale: 1"=20'

Drawn: HAN

LP-108

21-0707.1

FILE: ATLANTIC FIELDS\LANDSCAPE\PROJECT\ADVENTURE PARK\MAIN COUNTY PLAN\PHOTO\ATLANTIC FIELDS LANDSCAPE PLAN 3 ADVENTURE PARK.DWG
PLOTTED: 7/2/23 AT 3:56PM BY: J. PLAN
USER: J. PLAN AND JO. PLAN; PLOTTER: HP DesignJet T1100E; PLOT DEVICE: HP DesignJet T1100E; PLOT SCALE: 1"=20'; PLOT SHEET: 1 OF 1

Plant List

| SYMBOL | CODE | QTY | BOTANICAL / COMMON NAME | HT. | SPR. | GAL. | SPACING | CALIPER | D.B.H. | D.T. | NATIVE | REMARKS |
|-----------------|------|-----|--|-------------|-------------|------|---------|------------------|--------|--------|--------|--|
| TREES | | | | | | | | | | | | |
| | BA | 13 | Bulnesia arborea / Verawood | 12'-14' | 6' | - | A.S. | 2.5" Cal. | 2.5" | Very | No | 4' C.T., SINGLE LEADER |
| | BS | 55 | Bursera simaruba / Gumbo Limbo | 14' | 6'-7' | - | A.S. | 4" Cal. | 4" | Very | Yes | FULL DENSE CANOPY, FLA #1, BECKER |
| | FB-1 | 26 | Ficus benghalensis / Indian Banyan | 14' | 6' | - | A.S. | | | Very | No | COLLECTED SPECIMEN |
| | FB | 3 | Ficus benghalensis / Indian Banyan | 20' | 10' | - | A.S. | | | Very | No | COLLECTED SPECIMEN |
| | IC | 49 | Ilex cassine / Dahoon Holly | 12' o.a. | Field Grown | | | 2" Cal. | | Very | Yes | FULL DENSE CANOPY, FLA #1 |
| | PE | 2 | Pinus elliottii densa / Southern Slash Pine | 14' | 6' | - | A.S. | 3" Cal., 4" Cal. | 4" | Very | Yes | 4' C.T., FULL DENSE CANOPY, FLA #1, ROOTS PLUS CERTIFIED |
| | QV | 15 | Quercus virginiana / Southern Live Oak | 14' | 6' | - | A.S. | | | Very | Yes | FLA #1, BECKER #200, FULL DENSE CANOPY |
| | TD | 3 | Taxodium distichum / Bald Cypress | 8'-12' O.A. | Pot | | | | 2" | Low | Yes | FULL DENSE CANOPY, NOT WATER GROWN, STAGGER HEIGHTS IN GROUPS |
| FLOWERING TREES | | | | | | | | | | | | |
| | DR | 6 | Delonix regia / Royal Poinciana | 12' | 6'-7' | - | A.S. | | 3" | Very | No | 5' C.T., FULL DENSE CANOPY |
| | MG | 29 | Magnolia grandiflora / Southern Magnolia | 12' o.a. | Field Grown | | | | | | | Full Dense Canopy |
| PALM TREES | | | | | | | | | | | | |
| | BN | 29 | Bismarckia nobilis 'Silver' / Silver Bismarck Palm | 8' C.T. | - | - | A.S. | | | Medium | No | MATCHED SPECIMENS, HEAVY TRUNK, HARDEND OFF |
| | RE | 206 | Roystonea elata / Florida Royal Palm | 4' G.W. | - | - | A.S. | | | Very | Yes | SCAR FREE |
| | SP | 129 | Sabal palmetto / Cabbage Palmetto | 14-30' C.T. | Field Grown | | A.S. | | | Very | Yes | 1 HURRICANE OUT, STAGGER HEIGHTS IN GROUPS, MIX C.S.'S & BANANA CURVES FOR ALL PALMS IN GROUPS |
| | VM | 55 | Velechia montgomeryana / Montgomery Palm | 10' C.T. | - | - | A.S. | 4" Cal. | | Medium | No | MATCHED SPECIMEN, DARK GREEN HEADS |
| SHRUBS | | | | | | | | | | | | |
| | PMA | 78 | Podocarpus macrophyllus 'Maki' / Maki Yew Podocarpus | 60" | 24" | - | | | | Medium | No | FULL TO BASE |

| SYMBOL | CODE | QTY | BOTANICAL / COMMON NAME | HT. | SPR. | GAL. | SPACING | SPACING | CALIPER | D.B.H. | D.T. | NATIVE | REMARKS | |
|-------------|------|-------|---|-----|------|------|----------|----------|---------|--------|------|--------|---------|-------------------------|
| SHRUB AREAS | | | | | | | | | | | | | | |
| | CCY | 1,221 | Capparis cynophallophora / Jamaica Caper | 24" | 18" | - | 30" o.c. | 30" o.c. | | | | Very | Yes | FULL TO BASE |
| | CHI | 2,355 | Chrysobalanus icaco / Coco Plum 'Horizontalis' | 16" | 18" | - | 24" o.c. | 24" o.c. | | | | Very | Yes | FULL TO BASE |
| | CHR | 762 | Chrysobalanus icaco 'Red Tip' / Red Tip Coco Plum | 24" | 16" | - | 36" o.c. | 36" o.c. | | | | Very | Yes | Full To Base |
| | CUV | 470 | Coccoloba uvifera / Sea Grape | 60" | 36" | - | 48" o.c. | 48" o.c. | | | | Very | Yes | |
| | ERL | 1,373 | Eriodora littoralis / Golden Creeper | 12" | 16" | - | 24" o.c. | 24" o.c. | | | | Very | Yes | FULL CLUMP WITH RUNNERS |
| | HAP | 299 | Hamelia nodosa / Dwarf Firebush | 24" | 16" | - | 48" o.c. | 48" o.c. | | | | Very | Yes | FULL TO BASE |
| | MUH | 2,488 | Muhlenbergia capillaris / Pink Muhly Grass | 24" | 14" | - | 30" o.c. | 30" o.c. | | | | Very | Yes | FULL DENSE CLUMP |
| | SPB | 2,068 | Spartina bakeri / Sand Cordgrass | 24" | 14" | - | 30" o.c. | 30" o.c. | | | | Very | Yes | FULL DENSE CLUMP |
| | TRD | 692 | Tripsacum dactyloides / Fakahatchee Grass | 36" | 30" | - | 36" o.c. | 36" o.c. | | | | Very | Yes | FULL DENSE CLUMP |
| | TRF | 671 | Tripsacum floridanum / Florida Gamagrass | 24" | 18" | - | 30" o.c. | 30" o.c. | | | | Very | Yes | FULL DENSE CLUMP |

ABBREVIATIONS:
D.T. = DROUGHT TOLERANCE, V= VERY, M= MODERATE, L= LOW
NATIVE: Y= YES, N= NO
G.W.=GREY WOOD, C.T.= CLEAR TRUNK, O.A.=OVERALL, A.S.= AS SPECIFIED, O.C.=ON CENTER

Legend

- Bahia Sod 210,747 s.f.
- Irrigated Turf Area 113,579

Notes:

-ALL UTILITIES AND TREE CONFLICTS SHALL BE IDENTIFIED PRIOR TO PLANTING AND REVIEWED WITH LANDSCAPE ARCHITECT & MUST MEET MINIMUM UTILITY SETBACKS PER ROOT BARRIER DETAIL ON SHEET LP-201
-ALL PROHIBITED SPECIES SHALL BE REMOVED FROM THE ENTIRE SITE PRIOR TO THE ISSUANCE OF A CERTIFICATE OF OCCUPANCY
-THE USE OF CYPRESS MULCH IS PROHIBITED IN ALL LANDSCAPED AREAS
-ANY SUPPLEMENTAL PLANTINGS BEYOND THE REQUIRED PLANTINGS WILL MEET THE MINIMUM CODE REQUIREMENT OF 75% NATIVE TREES AND SHRUBS AND 50% GROUNDCOVERS
-ST. AUGUSTINE SOD IS PROHIBITED ANYWHERE ONSITE.

-NO USE SHALL BE MADE OF, AND NO DEVELOPMENT ACTIVITY SHALL BE PERMITTED IN, LAND USE BUFFERS AND PERIMETER LANDSCAPE AREAS, EXCEPT FRO:
I. PLANTING MATERIAL APPROVED AS PART OF THE LANDSCAPE PLAN.
II. COMPLETELY UNDERGROUND UTILITIES AND ESSENTIAL, SPECIFICALLY APPROVED, OVERHEAD OR ABOVEGROUND UTILITIES WHICH CROSS THESE AREAS AND TO NOT INTERFERE WITH THE MATURE GROWTH OF REQUIRED PLANT MATERIAL.
III. GRASS DITCHES, WITH BACK SLOPES NOT STEEPER THAN 3V:1H, WHICH CAN SUPPORT THE REQUIRED LANDSCAPING MATERIALS.

-PROTECTION OF REQUIRED LANDSCAPING:
1. ENCROACHMENT INTO REQUIRED BUFFERYARDS AND LANDSCAPED AREAS BY VEHICLES, BOATS, MOBILE HOMES OR TRAILERS SHALL NOT BE PERMITTED, AND REQUIRED LANDSCAPED AREAS SHALL NOT BE USED FOR THE STORAGE OF MATERIALS OR PRODUCTS OR THE PARKING OF VEHICLES AND EQUIPMENT.

-MAINTENANCE OF REQUIRED LANDSCAPING:
1. REQUIRED LANDSCAPING SHALL BE MAINTAINED SO AS TO AT ALL TIMES PRESENT A HEALTHY, NEAT AND ORDERLY APPEARANCE, FREE OF REFUSE AND DEBRIS. IF VEGETATION WHICH IS REQUIRED TO BE PLANTED DIES IT SHALL BE REPLACED WITH EQUIVALENT VEGETATION. ALL TREES FOR WHICH CREDIT WAS AWARDED AND WHICH SUBSEQUENTLY DIE, SHALL BE REPLACED BY THE REQUISITE NUMBER OF LIVING TREES ACCORDING TO THE STANDARDS ESTABLISHED IN THE MARTIN COUNTY LANDSCAPE CODE
2. ALL LANDSCAPING SHALL BE MAINTAINED FREE FROM DISEASE, PESTS, WEEDS AND LITTER. MAINTENANCE SHALL INCLUDE WEEDING, WATERING, FERTILIZING, PRUNING, MOWING, EDGING, MULCHING OR OTHER MAINTENANCE, AS NEEDED AND IN ACCORDANCE WITH ACCEPTABLE HORTICULTURAL PRACTICES. PERPETUAL MAINTENANCE SHALL BE PROVIDED TO PROHIBIT THE REESTABLISHMENT OF HARMFUL EXOTIC SPECIES WITHIN LANDSCAPING AND PRESERVATION AREAS
3. REGULAR LANDSCAPE MAINTENANCE SHALL BE PROVIDED FOR REPAIR OR REPLACEMENT, WHERE NECESSARY, OF ANY SCREENING OR BUFFERING REQUIRED AS SHOWN ON THIS PLAN. REGULAR LANDSCAPE MAINTENANCE SHALL BE PROVIDED FOR THE REPAIR OR REPLACEMENT OF REQUIRED WALLS, FENCES OR STRUCTURES TO A STRUCTURALLY SOUND CONDITION AS SHOWN ON THIS PLAN.
4. THE ASSOCIATION AND HOME ST. LUCIE CONSERVANCY DISTRICT SHALL MAINTAIN ALL COMMON AREAS AND PRESERVATION AREAS FREE OF PROHIBITED PLANT SPECIES AS DEFINED IN MARTIN COUNTY LAND DEVELOPMENT REGULATIONS AND FREE OF INVASIVE PLANT SPECIES DESIGNATED AS CATEGORY I BY THE FLORIDA INVASIVE SPECIES COUNCIL (FISC) OR THE FLORIDA EXOTIC PEST PLANT COUNCIL (FEPPC).

| Phsse 4 Landscape Data | | | | | 7/2/2023 |
|----------------------------------|---------|---------|---------------------------|----------------------------|----------|
| Site Data | Area | Acre | | | |
| Total Project Area | | 1,538.9 | a.c. | | |
| Landscape Data | | | | | |
| Adventur Pat Development Area | 822,410 | s.f. | Required | Provided | |
| Trees (1 per 2,500 s.f.) | | | 329 tree/palm credits | 367 tree/palm credits | |
| Vehicle Use Area | 96,222 | s.f. | | | |
| Perimeter | | | 983 Lf perimeter | 983 Lf perimeter | |
| Trees (1 per 300 s.f.) | | | 9,830 s.f. landscape area | 37,470 s.f. landscape area | |
| Interior Vehicle Use Area | 46,403 | s.f. | | | |
| Interior | | | 9 planting areas | 9 planting areas | |
| Trees (1 per planting area s.f.) | | | 28 tree/palm credits | 23 tree/palm credits | |
| Adventur Pat Total | | | 390 tree/palm credits | 432 tree/palm credits | |
| Native Passage | | | 79% | 79% | |
| Trees | | | 50% | 99% | |
| Shrubs & Ground Covers | | | | | |

| Phase 4 Tree Credit Calculations | | | | 7/2/2023 |
|----------------------------------|-----------------------|-------------------|--------------------|----------|
| | Required Tree Credits | Provided | Total Tree Credits | |
| Trees | | | | |
| 1 Tree = 1 Tree | | 175 Trees | 175 Tree Credits | |
| Large Trees | | | | |
| 15'-18" D.B.H. = 3 Trees | | 26 Trees | 78 Tree Credits | |
| Small Palms | | | | |
| 3 Palms = 1 Tree | | 184 Palms | 61 Palm Credits | |
| Large Palms | | | | |
| 2 Palms = 1 Tree | | 235 Palms | 118 Palm Credits | |
| Total | 390 Trees & Palms | 620 Trees & Palms | 432 Total Credits | |

See Sheet LP-201 For Landscape Specifications & Details

© Copyright 2024 All Rights Reserved
2GHO
LANDSCAPE ARCHITECTURE
& PLANNING

1907 Commerce Lane
Suite 101
Jupiter, Florida 33458
561-575-9657
www.2GHO.com

Phase 4 - Tract R10
Adventure Park
Martin County, Florida

Designed: _____
Drawn: _____
Approved: _____
Date: 07/02/23
Job no: 24-00072
Revisions: _____

Seal
Digitally signed
by Dylan L. Riden
Date: 2025.07.02
16:02:52 -0400
LA 20250310

Sheet Title:
Phase 4
Plant List

Scale: N.T.S.

Drawn: Hsu

LP-200

21-0707.1

