

Legend

Conservation Easement:  
Wetland

Tree to Be Removed

Rare and Unique Upland

Upland Preserve /  
Wetland Buffer

Tree Protection Notes

1.

Existing trees that are to be preserved shall be barricaded according to Martin County regulations.
2.

Tree Protection Barricades shall be erected prior to the commencement of any work. All barricades must be maintained intact for the duration of construction.
3.

Barricades must be constructed around the critical protection zone of each tree or cluster of trees.
4.

During periods of development and construction, the areas within the drip-line of preserved trees shall be maintained at their original grade with pervious landscape material. Within these areas, there shall be:

4.1.

No trenching or cutting of roots

4.2.

No fill, compaction or removal of soil; and

4.3.

No use of concrete, paint, chemicals or other foreign substances
- Barricades shall be constructed of a yellow or orange high density polyethylene square grid mesh fence with a min height of 4 feet. Fencing shall be secured to posts with nylon cable ties at the top middle and bottom of each post. Posts shall be a 2"x 2" x 6' wood or iron rebar or other material with prior approval from Martin County's Growth Management Department. Posts shall be spaced a max. of 6' o.c.

Tree Chart

Tree #	Common Name	Size (DBH)	Protected	Status	Preserve Credits	Replacement Credits
1	Oak Tree	8	Yes	Remove		3
2	Oak Tree	9	Yes	Remove		3
3	Oak Tree	15	Yes	Remove		4
4	Oak Tree	8	Yes	Remove		3
5	Oak Tree	8	Yes	Remove		3
6	Oak Tree	20	Yes	Remove		5
7	Oak Tree	8	Yes	Remain	2	
8	Oak Tree	9	Yes	Remove		3
9	Oak Tree	8	Yes	Remove		3
10	Oak Tree	8	Yes	Remove		3
11	Oak Tree	9	Yes	Remove		3
12	Oak Tree	8	Yes	Remove		3
13	Oak Tree	8	Yes	Remove		3
14	Pine Tree	12	Yes	Remove		3
15	Pine Tree	13	Yes	Remove		4
16	Pine Tree	10	Yes	Remove		3
17	Pine Tree	8	Yes	Remove		3
18	Pine Tree	8	Yes	Remove		3
19	Pine Tree	16	Yes	Remain	3	
20	Pine Tree	18	Yes	Remain	3	
21	Pine Tree	18	Yes	Remain	3	
22	Pine Tree	6	Yes	Remove		2
23	Pine Tree	8	Yes	Remove		3
24	Miscellaneous Tree	8	No	Remove		
25	Miscellaneous Tree	8	No	Remove		
26	Pine Tree	14	Yes	Remove		4
27	Pine Tree	14	Yes	Remove		4
28	Pine Tree	8	Yes	Remove		3
29	Pine Tree	8	Yes	Remove		3
30	Pine Tree	9	Yes	Remove		3
31	Pine Tree	12	Yes	Remain	2	
32	Pine Tree	12	Yes	Remove		3
33	Pine Tree	8	Yes	Remove		3
34	Pine Tree	11	Yes	Remain	2	
35	Pine Tree	9	Yes	Remove		3
36	Pine Tree	8	Yes	Remove		3
37	Pine Tree	13	Yes	Remove		4
38	Pine Tree	14	Yes	Remove		4
39	Pine Tree	9	Yes	Remove		3
40	Pine Tree	8	Yes	Remove		3
41	Pine Tree	8	Yes	Remove		3
42	Pine Tree	10	Yes	Remove		3
43	Pine Tree	11	Yes	Remain	2	3
44	Pine Tree	11	Yes	Remain	2	3
45	Pine Tree	14	Yes	Remain	4	
46	Pine Tree	9	Yes	Remain	2	3

Total Preserve Credits25

Total Replacement Credits118

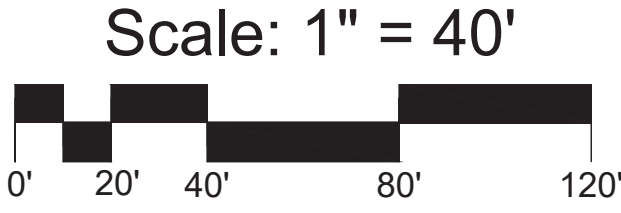
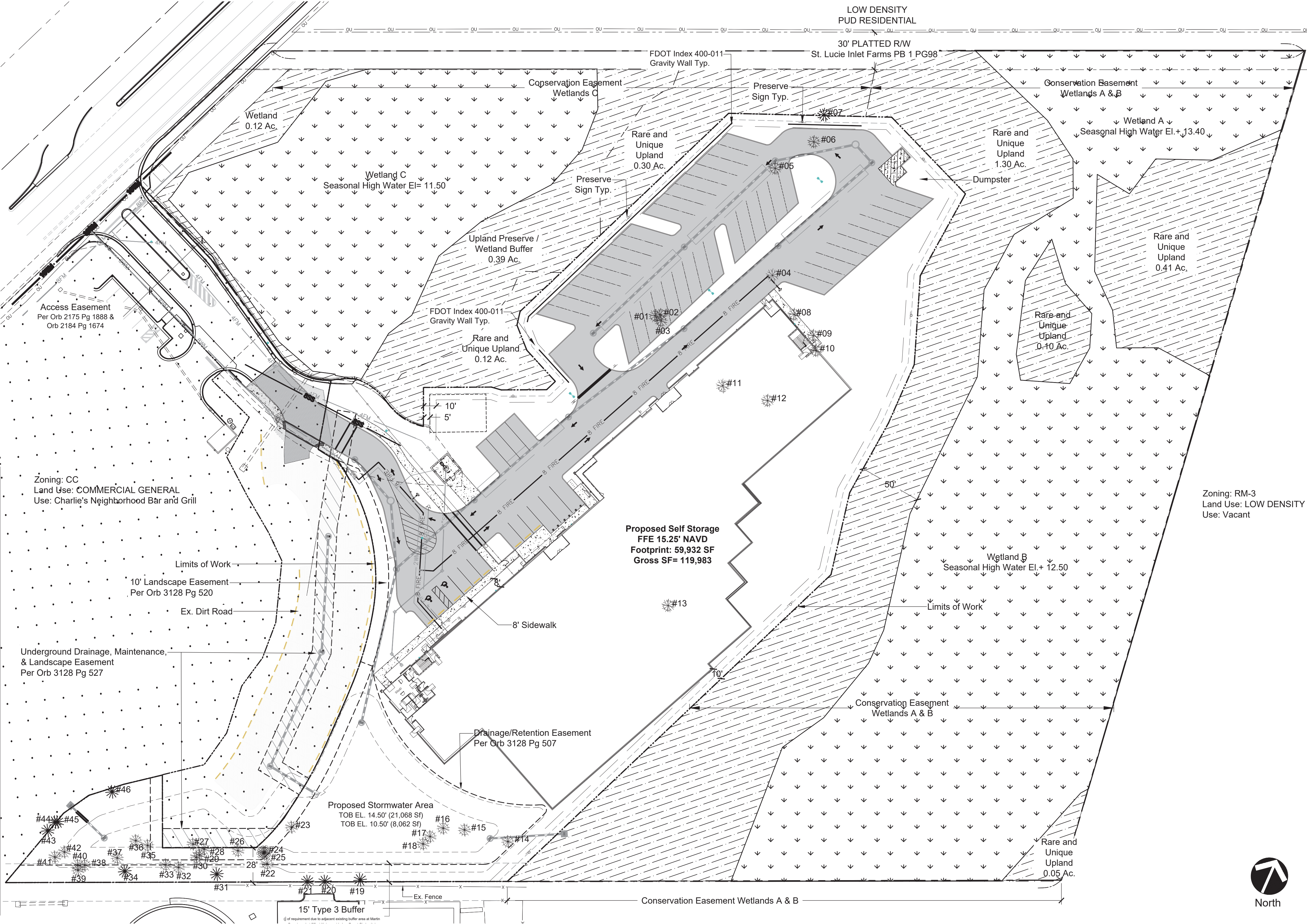
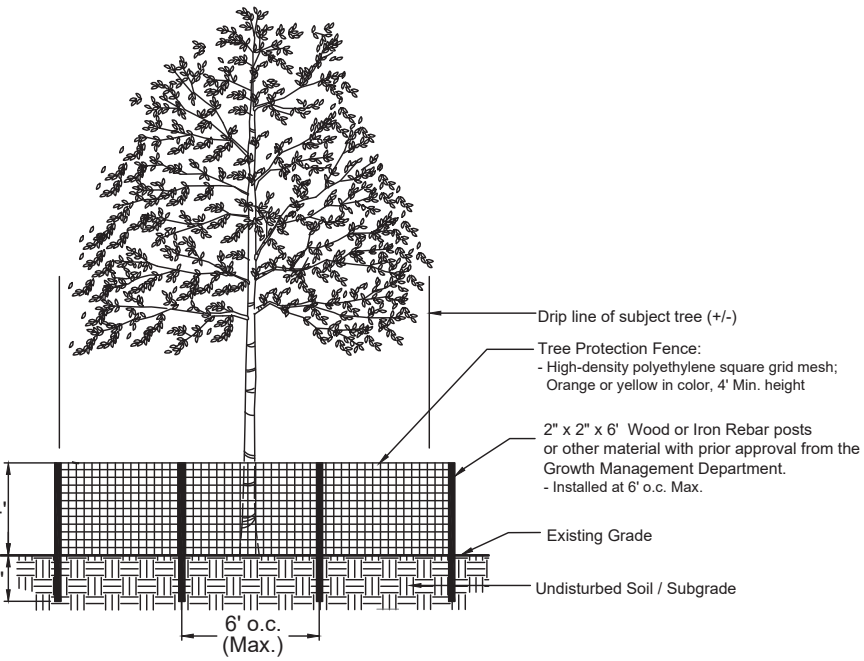
Total Replacement Required93

Demolition Notes

10.14.C. Authorization for the relocation of gopher tortoises within the development, as provided for by applicable state agency permits may be granted by the Growth Management Department.

\*Prior to Clearing

Tree Barricade Detail NTS



3500 SW Corporate Parkway,  
Suite 203, Palm City, Florida  
34990  
T 772.678.7200  
www.hjadesignstudio.com  
LA 0000905

Florida

Parrot Circle Storage Facility

450 SE Parrot Circle

Tree Disposition Plan

Copyright  
The following drawings are instruments of service to the Landscape Architect. They are not products of design. All ideas, designs, arrangements, and plans indicated or represented by this drawing are owned by and the property of the designer, and were created, evolved, and developed for use on and in connection with the specified project. None of such ideas, designs, arrangements, or plans shall be used by or disclosed to any person, firm, or corporation for any purpose whatsoever without the written permission of the designer.

Job No. C145-015 (2002-29)  
Drawn By EB  
Checked By MH  
Approved By MH  
Submittal Dates 2022-11-04

Revision Dates  
10/30/24 Per 09/13/24 Staff Report

LP-1

---

Sec. 4.663.1 - At least 20% of total developed area shall be landscaped.		
Total Site Area (SF)	482,756	
Total Developed Area (SF)	193,981	
	<u>Required</u>	<u>Provided</u>
Area (SF)	38,796	84,825

**Sec. 4.663.A.3.b.** - "All nonresidential developments shall provide at least 1 tree per 2,500 sf of site area and shall comply with the standards set forth in section, 4.664, LDR."

**Type 3 Bufferyard- Shared**  
**Sec. 4.663.B.**-Type 3 Bufferyard: A 30-foot-wide landscape strip with a six-foot-high opaque fence or wall. At least one tree and 34 shrubs shall be provided for every 300 square feet of required bufferyard. Trees must be at least 14 feet in height with a three-inch caliper and staggered for maximum opacity. 1/2 of Buffer requirement due to adjacent existing buffer area at Martin Crossings.

**Landscape Easement:**

**Sec. 4.663.A.4 -** "A ten-foot wide strip of land exclusive of curbing along the entire side and rear perimeter of a site, located between the side and rear property lines and any vehicular use area, shall be landscaped. The total tree requirement within the perimeter landscape area shall be determined by using a ratio of one tree for each 30 linear feet of required landscape perimeter area, or one tree for every 300 square feet of planting area or major portion thereof, with no less than 75 percent of said trees being shade trees.

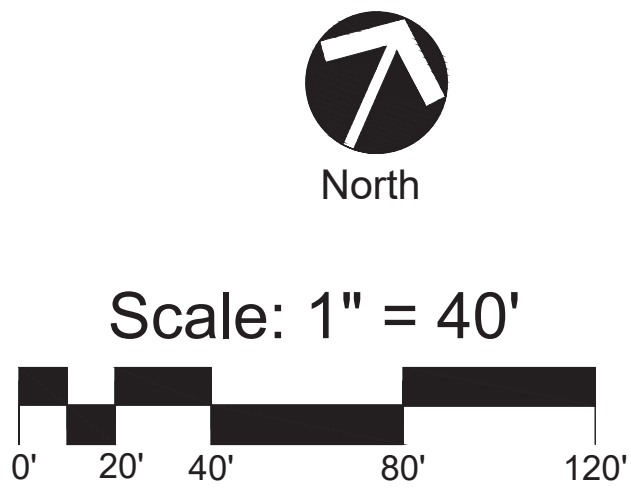
**Interior VUA Requirements**  
**Sec. 4.663.A.4. a.** – A ten-foot-wide strip of land, exclusive of curbing, along any vehicular use area, shall be landscaped. The total tree requirement within the perimeter landscape area shall be determined by using a ratio of one tree for each 30 linear feet of required landscape perimeter area, or one tree for every 300 square feet of planting area or major portion thereof, with no less than 75 percent of said trees being shade trees. Shrubs with 15 to 23 inches of spread shall be planted on three foot centers; shrubs with greater than 23 inches of spread shall be planted on five-foot centers

**Sec. 4.663.A.4. b -** "In vehicular use areas within the interior of a site, one 500 Sf planting area shall be required for every 5,000 Sf of vehicular use area, or major portion thereof, and at least 3 2", or 2 3" caliper shade trees together with other landscape material. Median parking islands shall have 1 tree for every 30 LF"

	<u>Required</u>	<u>Provided</u>
Parking Island Trees	13	13 (11 Trees + 6 Palms @ 3:1)

**Sec. 4.663.A.4. b.(3) -** "Landscaped interior medians of at least six feet in width exclusive of curbing shall be proded between an interior row of parking spaces and an abutting interior driveway or between abutting rows of parking spaces. At least one tree shall be required for every 30 linear feet of interior median, planted singly or in clusters with tree locations not more than 60 feet apart."

<b><u>Native Planting Requirements</u></b>		
	<b><u>Required</u></b>	<b><u>Provided</u></b>
Total Required Trees	78	119
Native Trees (75% )	58	119
Shade Trees (50%)	39	62
VJA Shade Trees (75%)	32	37
Replacement Credits	93	202
		(101 Trees @ 3" Cal)
Tree Species Mix	5	5



Conservation Easement: Wetland

Upland Preserve / Wetland Buffer

Rare and Unique Upland

Ex. Saw Palmetto To Remain in Type 3 Buffer

1. Hurricane cutting is not allowed, and only brown fronds and brown seed pods may be removed from Sabal Palms in the VJA.
2. Field adjust Types 3 Buffer with Landscape Architect to protect existing Saw Palmetto and Pine Trees.
  - 2.1. Proximately 2,382 square feet of existing Saw Palmetto (2,382 Sf / 4' o.c. = 595 Shrubs)

<u>SYMBOL</u>	<u>CODE</u>	<u>BOTANICAL / COMMON NAME</u>	<u>SIZE</u>	<u>QTY</u>
<b><u>GROUND COVERS</u></b>				
	PN	Paspalum notatum / Bahiagrass	flat	43,585 sf

SYMBOL	CODE	BOTANICAL / COMMON NAME	CAL.	HT.	SPD.	FORM	DROUGHT	NATIVE	QTY
TREES									
	CD	Coccoloba diversifolia / Pigeon Plum	3.0'	10' - 12'	5'	3' CT., STD.	No	Yes	22
	CE	Coniocarpus erectus / Green Buttonwood	3.0'	10' - 12'	5'	4' CT., STD	Yes	Yes	16
	PE	Pinus elliotii / Slash Pine	3.0'	10' - 12'	5'	Balled and Burlapped	No	Yes	28
	QV	Quercus virginiana / Southern Live Oak	3.0'	12' - 14'	5'	4' CT., STD	Yes	Yes	14
	SS	Sabal palmetto / Sabal Palm	N/A	14' - 21' (Ratio 3:1)	N/A	Varied Height	Yes	Yes	24
1/2 TYPE 3 BUFFERYARD									
	PE2	Pinus elliotii / Slash Pine	3.0'	14' O.A.	5'	Balled and Burlapped	No	Yes	17
	QV2	Quercus virginiana / Southern Live Oak	3.0'	14' O.A.	5'	4' CT., STD	Yes	Yes	3
	SS2	Sabal palmetto / Sabal Palm	N/A	14' - 21' (Ratio 3:1)	N/A	Varied Height	Yes	Yes	12
SHRUBS									
SYMBOL	CODE	BOTANICAL / COMMON NAME	GAL.	SIZE	SPACING	NATIVE	DROUGHT		QTY
	CR	Chrysobalanus icaco / Red Tip / Red Tip Coco Plum	7 gal.	36"	36" OC	Yes	Yes		590

**Copyright**  
The following drawings are instruments of service to the Landscape Architect. They are not products of design. All ideas, designs, arrangements, and plans indicated or represented by this drawing are owned by and the property of the designer, and were created, evolved, and developed for use on and in connection with the specified project. None of such ideas, designs, arrangements, or plans shall be used by or disclosed to any person, firm, or corporation for any purpose whatsoever without the written permission of the designer.

Job No. C145-015 (2002-29)  
 Drawn By EB  
 Checked By MH  
 Approved By MH  
 Submittal Dates 2022-11-04

Revision Dates \_\_\_\_\_  
0/30/24 Per 09/13/24 Staff Report

# LP-2

Landscape Notes

1. Plant and landscape materials shall conform to the standards for Florida No. 1, as given in the Grades and Standards for Nursery Plants, Parts I & II, as prepared by the Florida Dept. of Agriculture and Consumer Services.

2. Alternative plant species for required landscape may be permitted subject to review and approval by the Martin County Growth Management Department prior to installation.

3. This plan has been designed to meet the tree planting requirements contained within the FPL document entitled 'Plant the Right Tree in the Right Place.' For existing or proposed utilitie, to tree shall be planted where it could, at a mature height conflict with overhead power lines.

3.1. Large trees (height at maturity of more than 30') shall be planted no closer than a horizontal distance of 30' from the nearest overhead power line.

3.2. Medium height trees (height at maturity between 20' and 30') shall be offset at least 20' and small trees (height at maturity of less than 20') require no offset.

6. Tree species shall be selected as to minimize conflicts with existing or proposed utilities.

7. Encroachments into required buffer yards and landscape areas by vehicles, boats, mobile homes or trailers shall not be permitted and required landscape areas shall not be used for the storage or sale of materials or products or the parking of vehicle and equipment

8. Alternative plant species for required landscape may be permitted subject to review and approval by Martin County Growth Management Department prior to installation
9. Enhanced landscaping beyond minimum requirements will conform to all applicable sections of the Martin County Growth Management with Certification of Landscaping installation and maintenance.

10. All prohibited exotic or invasive species shall be removed from the site prior to the issue of a certificate of occupancy.

11. No cypress mulch is to be used on site. Eucalyptus or melaleuca mulch is to be used in a 3" consistent layer in all planting beds.

12. The stormwater areas will be maintained in native plants in perpetuity.

13. The property owner, or successor in interest, or agent, if any shall be jointly and severally responsible for the following:

13.1. Regular maintenance of all landscaping to be kept alive and in good condition and in a way that present a healthy, neat and orderly appearance. All landscaping shall be maintained free from disease, pests, weeds and litter. Maintenance shall include weeding, watering, fertilizing, pruning, mowing, edging, mulching and other maintenance, as needed and in accordance with acceptable horticultural practices.

13.2. Repair or replacement of required wall, fences, or structures to a structurally sound condition

13.3. Regular maintenance, repair, or replacement, where necessary, of any screening or buffering required by this division and perpetual maintenance to prohibit the re-establishment of harmful exotic species within landscaping and preservation areas.

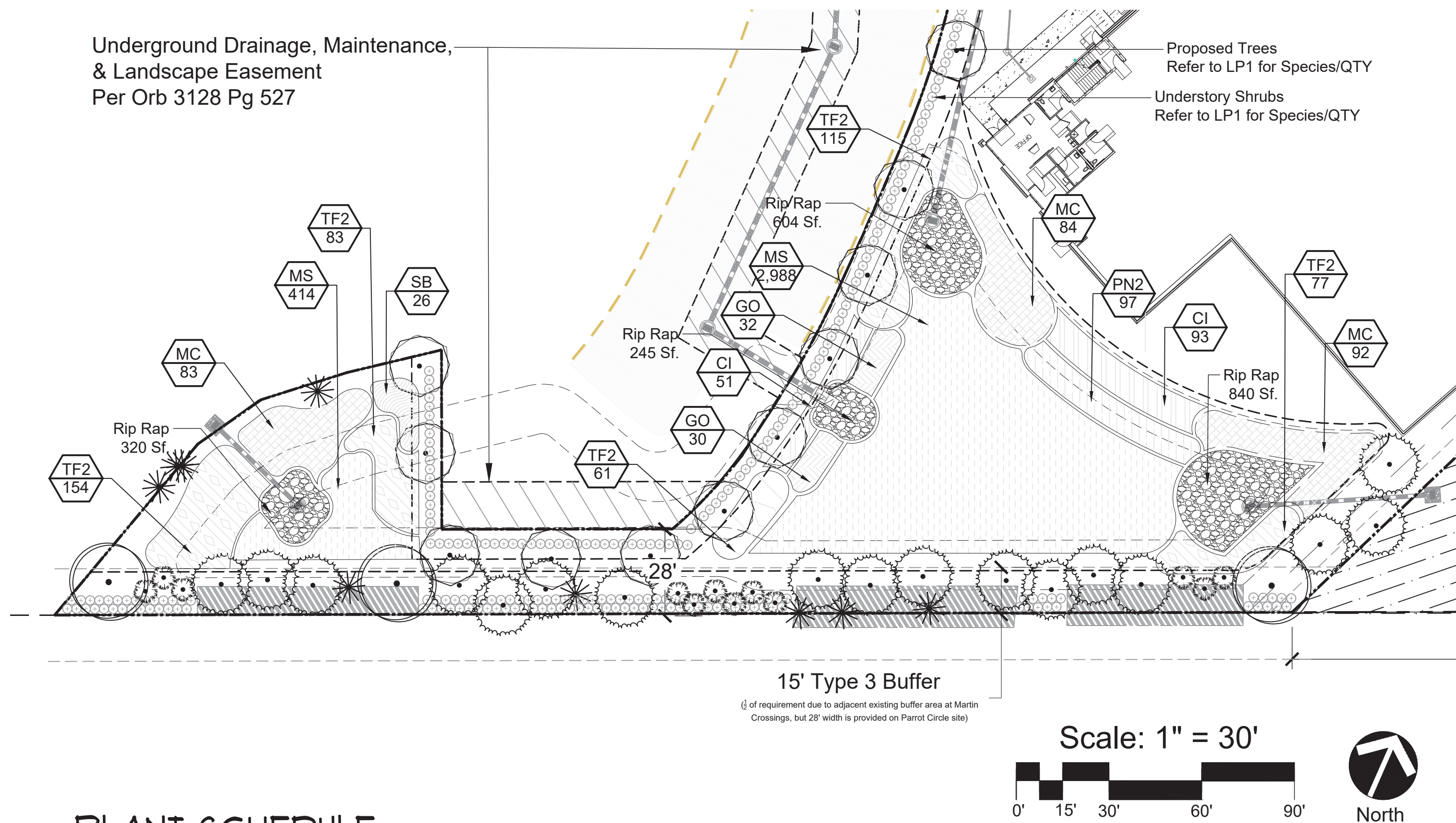
Irrigation Notes

1. Adequate irrigation of landscaped areas shall be provided for the first full growing season and continue thereafter only as necessary to maintain required vegetation in good and healthy condition.

2. Irrigation systems shall conform to the following standards: Irrigation systems shall be continuously maintained in working order and shall be designed not to overlap water zones or to water impervious areas.
3. No irrigation systems shall be installed or maintained abutting any public street which causes water from the system to overspray onto the roadway or to overlap water zones or to water impervious areas.

4. Irrigation Water Source: TBD

Dry Rentention Planting Plan

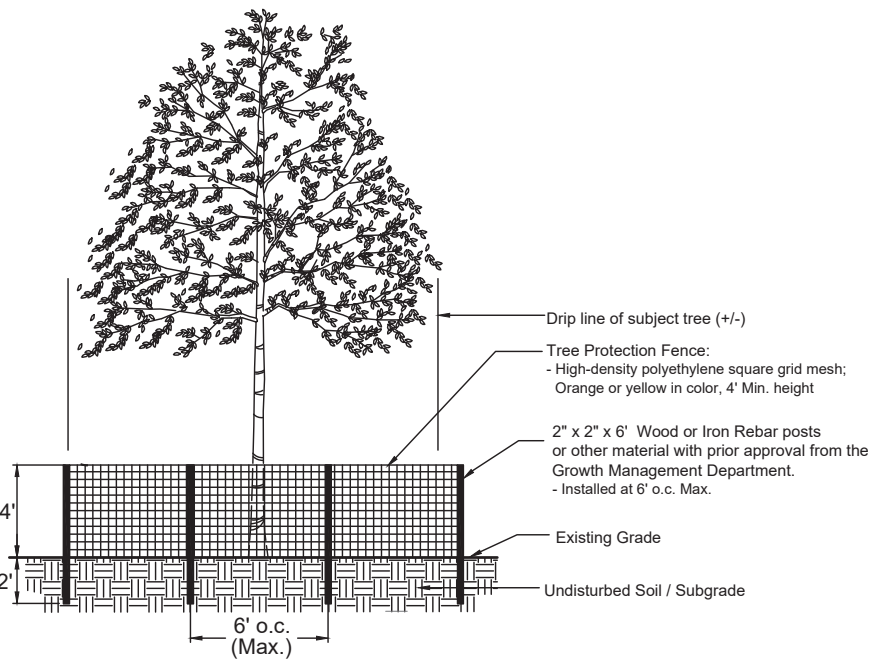


PLANT SCHEDULE

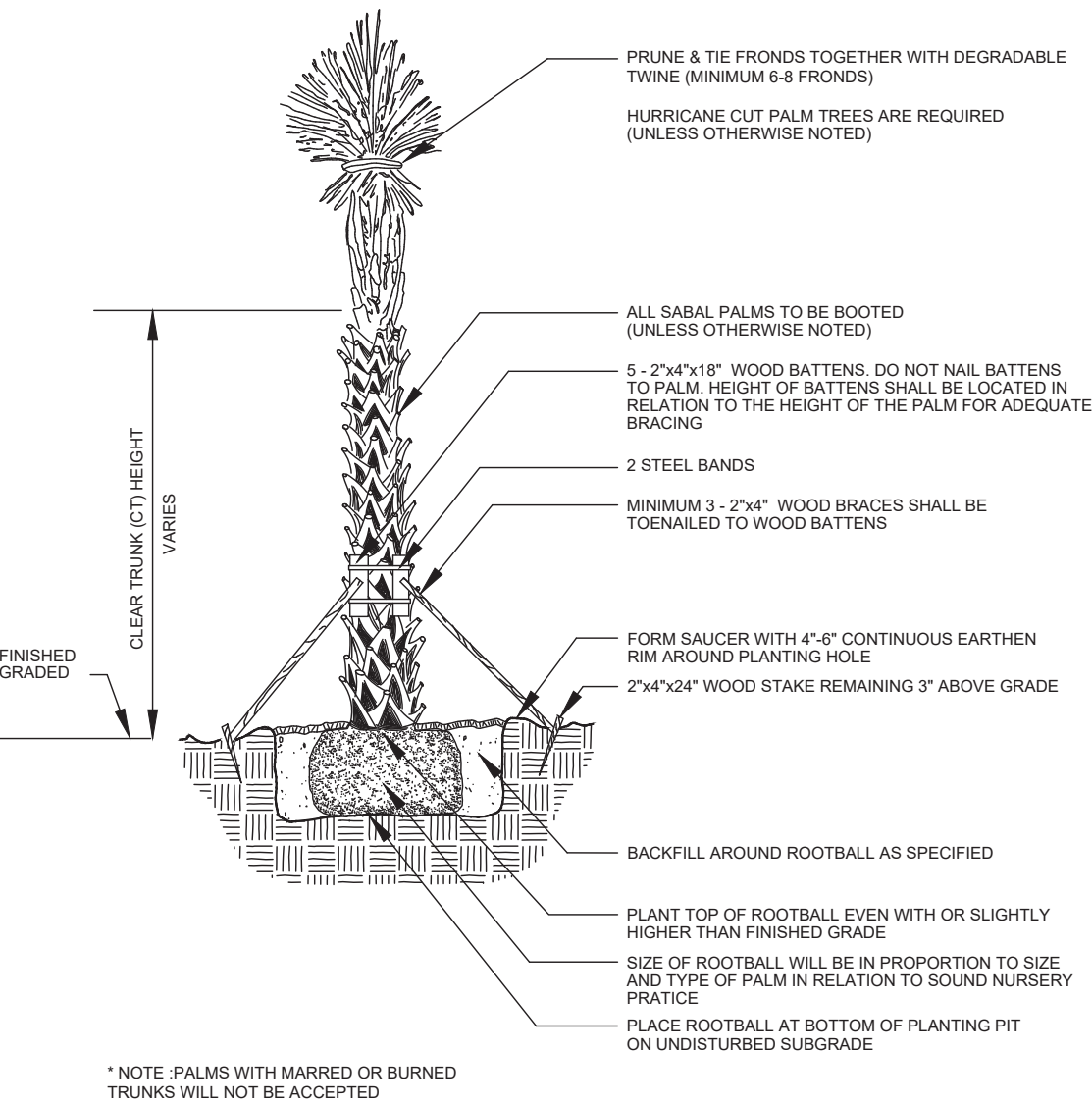
SYMBOL	CODE	BOTANICAL / COMMON NAME	GAL.	NATIVE	SPACING	QTY
STORMWATER PLANTING						
	CI	Chrysobalanus icaco `Horizontal` / Horizontal Cocoplum	3 gal. Full	Yes	30" o.c.	144
	GO	Geobalanus oblongifolius / Gopher Apple	3 gal., 2'-3' Ht., full	Yes	30" o.c.	62
	MS	Mimosa strigillosa / Sunshine Mimosa	1 gal. Full	Yes	18" o.c.	3,402
	MC	Muhlenbergia capillaris / Pink Muhly Grass	3 gal. Full	Yes	36" o.c.	259
	PN2	Phyla nodiflora / Lippia	3 gal., 2'-3' Ht., full	Yes	30" o.c.	97
	SB	Spartina bakeri / Sand Cordgrass	1 gal. Full	Yes	36" o.c.	26
	TF2	Tripsacum floridanum / Dwarf Fakahatchee Grass	1 gal. Full	Yes	30" o.c.	490

Planting Details

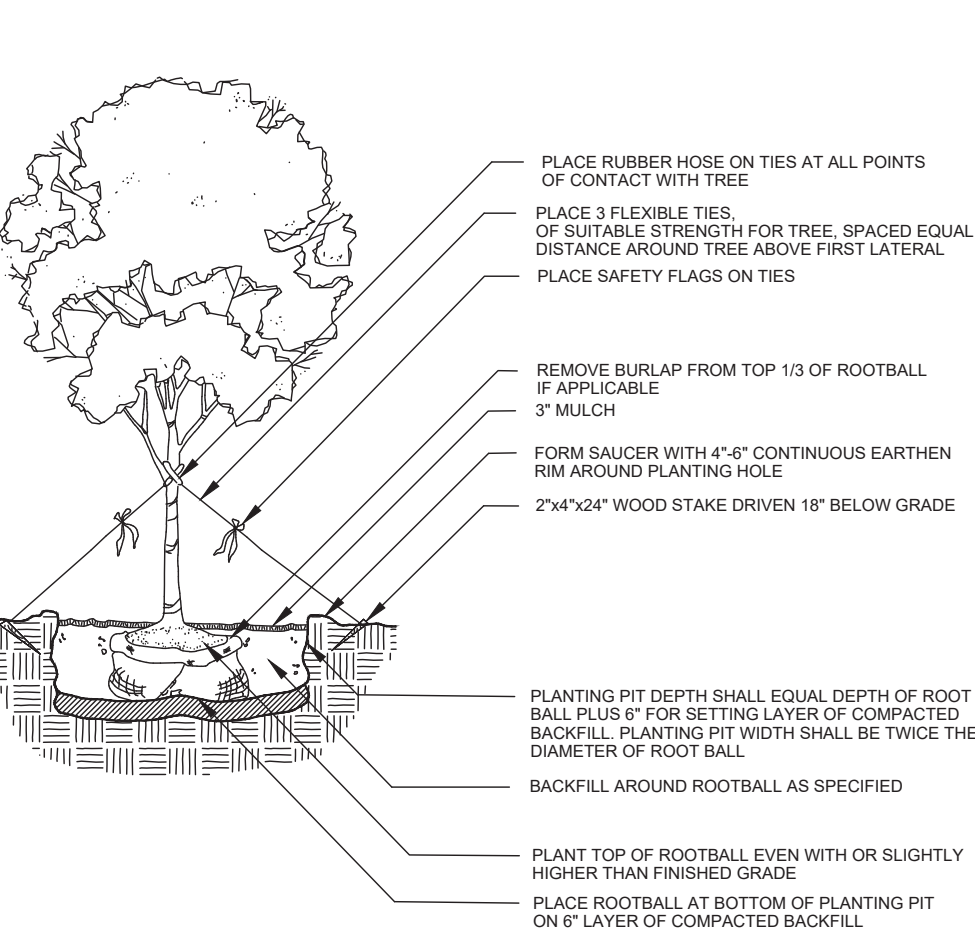
Tree Barricade Detail NTS



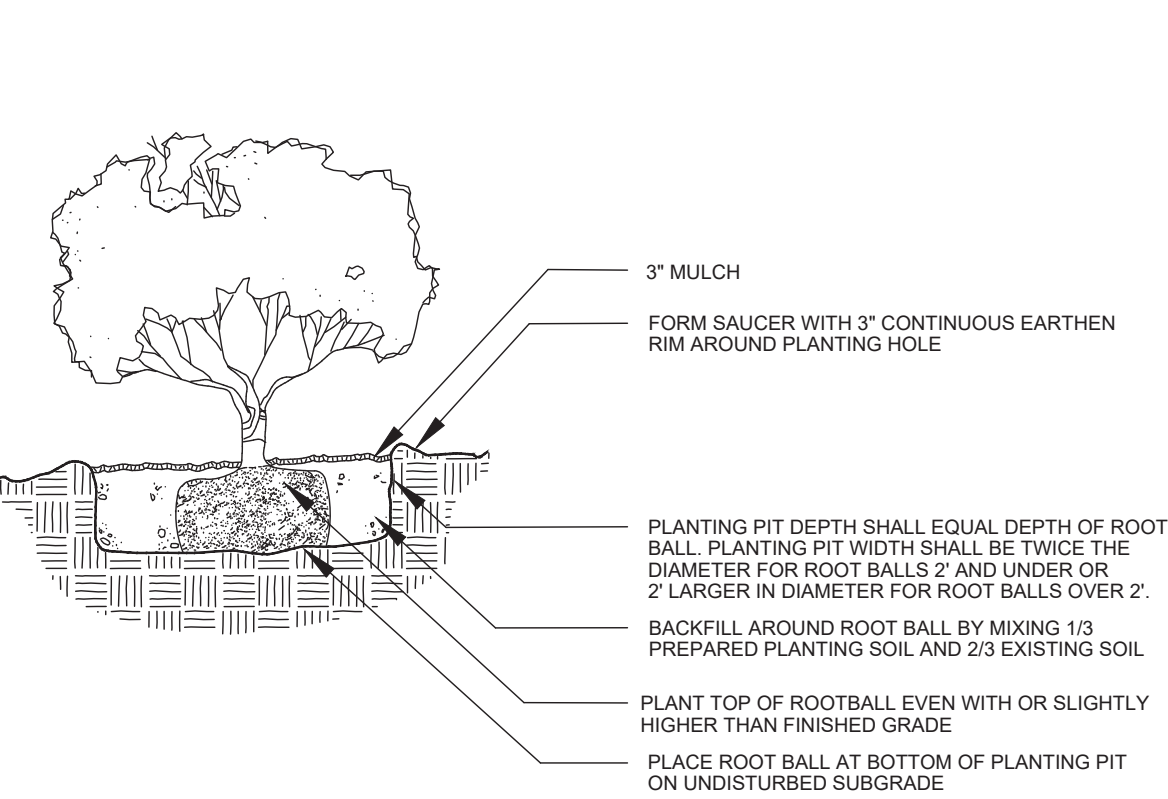
Palm Planting Detail NTS



Tree Planting Detail NTS



Shrub/Groundcover Planting Detail NTS



3500 SW Corporate Parkway,  
Suite 203, Palm City, Florida  
34990

T 772.678.7200  
www.hjadesignstudio.com  
LA 0000905

Florida

Parrot Circle Storage Facility

450 SE Parrot Circle

Landscape Notes and Details

Copyright  
The following drawings are instruments of service to the  
Landscape Architect. They are not products of design. All  
ideas, designs, arrangements, and plans indicated or  
represented by this drawing are owned by and the property of  
the designer, and were created, evolved, and developed for  
use on and in connection with the specified project. None of  
such ideas, designs, arrangements, or plans shall be used by  
or disclosed to any person, firm, or corporation for any  
purpose whatsoever without the written permission of the  
designer.

Job No. C145-015 (2002-29)  
Drawn By EB  
Checked By MH  
Approved By MH  
Submittal Dates 2022-11-04

Revision Dates  
10/30/24 Per 09/13/24 Staff Report

LP-3