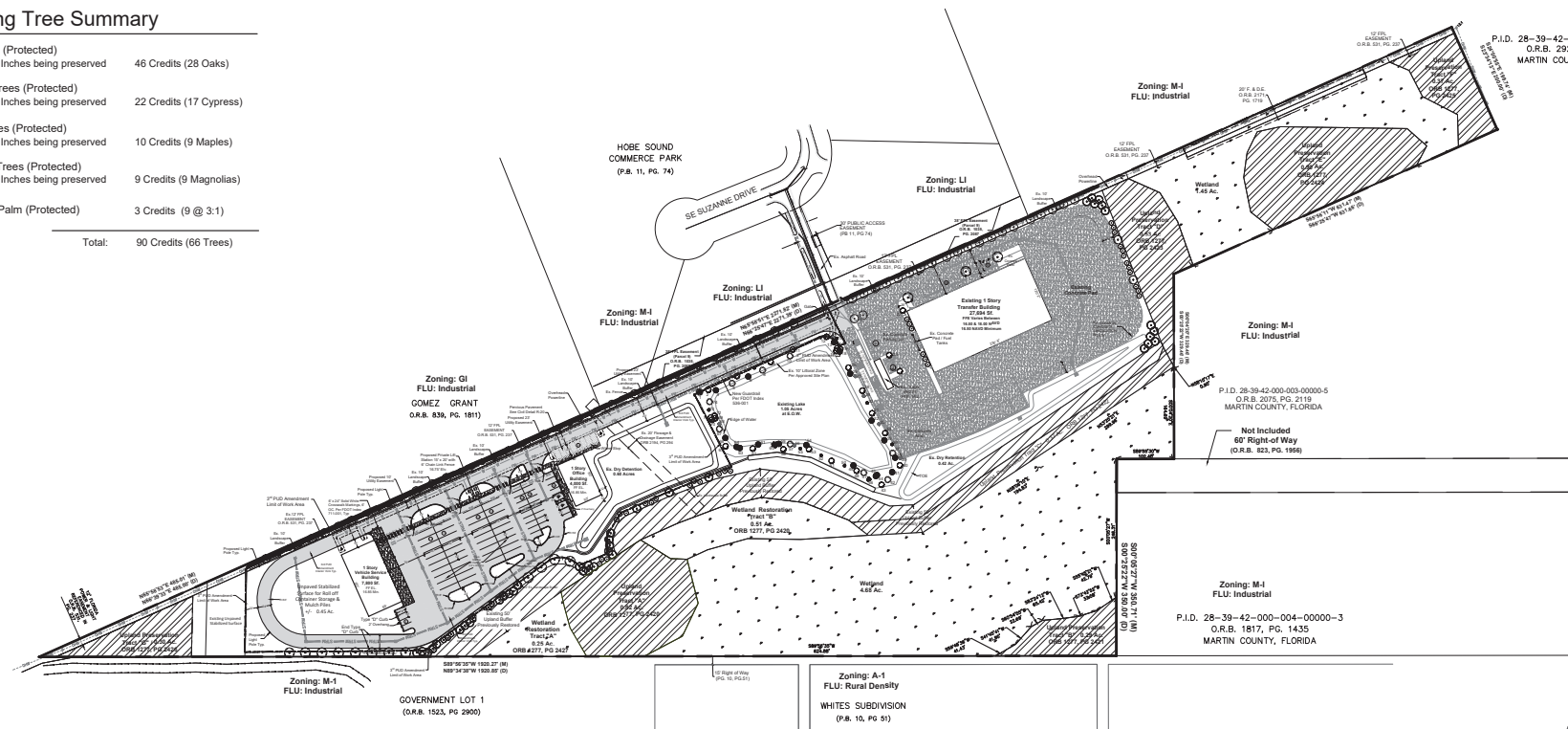


Existing Tree Summary

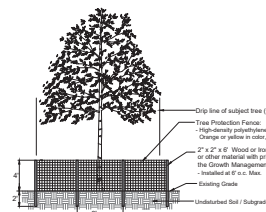
Oak Trees (Protected)	
Total Inches being preserved	46 Credits (28 Oaks)
Cypress Trees (Protected)	
Total Inches being preserved	22 Credits (17 Cypress)
Maple Trees (Protected)	
Total Inches being preserved	10 Credits (9 Maples)
Magnolia Trees (Protected)	
Total Inches being preserved	9 Credits (9 Magnolias)
Cabbage Palm (Protected)	
Total Credits (66 Trees)	90 Credits (9 @ 3:1)



Existing Tree Chart

CODE #	TREE SPECIES	SIZE	PROTECTED	STATUS
1	Avocado	8' CT	No	Preserve
2	Oak	12' DBH	Yes	Preserve
3	Cypress	6' DBH	Yes	Preserve
4	Maple	8' DBH	Yes	Preserve
5	Oak	10' DBH	Yes	Preserve
6	Cypress	12' DBH	Yes	Preserve
7	Magnolia	3' DBH	No	Preserve
8	Maple	4' DBH	Yes	Preserve
9	Oak	6' DBH	Yes	Preserve
10	Maple	8' DBH	Yes	Preserve
11	Oak	8' DBH	Yes	Preserve
12	Oak	12' DBH	Yes	Preserve
13	Cypress	10' DBH	Yes	Preserve
14	Palm	14' CT	No	Preserve
15	Magnolia	2' DBH	Yes	Preserve
16	Oak	8' DBH	Yes	Preserve
17	Oak	8' DBH	Yes	Preserve
18	Oak	8' DBH	Yes	Preserve
19	Oak	8' DBH	Yes	Preserve
20	Palm	14' CT	No	Preserve
21	Palm	10' CT	No	Preserve
22	Oak	10' DBH	Yes	Preserve
23	Oak	12' DBH	Yes	Preserve
24	Oak	12' DBH	Yes	Preserve
25	Oak	10' DBH	Yes	Preserve
26	Cypress	10' DBH	Yes	Preserve
27	Palm	20' CT	No	Preserve
28	Oak	10' DBH	Yes	Preserve
29	Palm	24' CT	No	Preserve
30	Magnolia	4' DBH	Yes	Preserve
31	Oak	10' DBH	Yes	Preserve
32	Cypress	6' DBH	Yes	Preserve
33	Palm	12' CT	No	Preserve
34	Oak	10' DBH	Yes	Preserve
35	Cypress	4' DBH	Yes	Preserve
36	Magnolia	4' DBH	Yes	Preserve
37	Maple	2' DBH	No	Preserve
38	Cypress	4' DBH	Yes	Preserve
39	Palm	12' CT	No	Preserve
40	Oak	8' DBH	Yes	Preserve
41	Cypress	4' DBH	Yes	Preserve
42	Maple	8' DBH	Yes	Preserve
43	Oak	8' DBH	Yes	Preserve
44	Cypress	6' DBH	Yes	Preserve
45	Cypress	10' DBH	Yes	Preserve

Tree Protection / Barricade Detail



Tree Barricade Detail
N.T.S.

Tree Protection Notes

- Existing trees that are to be preserved shall be barricaded according to Martin County regulations.
- Tree Protection Barricades shall be erected prior to the commencement of any work. All barricades must be maintained intact for the duration of construction.
- Barricades must be constructed around the critical protection zone of each tree or cluster of trees.
- During periods of development and construction, the areas within the drip-line of preserved trees shall be maintained at their original grade with previous landscape material. Within these areas, there shall be:
 - No trenching or cutting of roots.
 - No fill, compaction or removal of soil, and
 - No use of concrete, paint, chemicals or other foreign substances.
- Barricades shall be constructed of a yellow or orange high density polyethylene square grid mesh fence with a min. height of 4 feet. Fencing shall be secured to posts with nylon cable ties at the top and bottom of each post. Posts shall be 2" x 2" x 6' wood or iron rebar or other material with prior approval from Martin County's Growth Management Department. Posts shall be spaced a max. of 6' o.c.

Notes

- All protected trees are located within the existing littoral and upland transition area around the existing lake, existing planted vegetation and within the upland preserve tracts. These areas are not being modified on the site. Location of protected trees with tree protection barricades, where warranted. Barricades must be constructed around the critical protection zone of each tree or cluster of trees.
- Construction details for the installation of erosion control devices and tree protection barricades. All barricades must be maintained intact for the duration of construction.
- During periods of development and construction, the areas within the drip-line of preserved trees shall be maintained at their original grade with previous landscape material. Within these areas, there shall be no trenching or cutting of roots; no fill, compaction or removal of soil; and, no use of concrete, paint, chemicals or other foreign substances.
- These barricades must be constructed of a minimum of one-fourth-inch diameter rope which is yellow or orange in color and made of nylon or poly. The rope is to be attached to a minimum of 2 x 2 wooden poles, iron rebar, two inches or greater pvc pipe or other material with prior approval of the growth management department. The rope must be a minimum of four feet off the ground and may not be attached to any vegetation.

Legend



● # Existing Trees

Scale: 1" = 100'



Coastal Waste & Recycling - PUD

Florida

Martin County

3rd Amendment - Existing Tree Plan

Copyright
The drawings are instruments of service to the
landscape architect. They are not products of design. All
ideas, designs, drawings, and plans are the property of
the designer and are not to be reproduced, copied, or
used in any way without the written consent of the
designer. All rights are reserved. No part of this
document may be reproduced, stored in a retrieval
system, or transmitted in any form or by any means
electronic, mechanical, photocopying, recording,
or by any information storage and retrieval system
without the prior written permission of the
designer.

Job No. 2024-09
Drawn By EB
Checked By MH
Approved By MH
Submittal Dates 01-14-2025
Revision Dates
1st Resubmittal 07-24-2025
2nd Resubmittal 10-24-2025

LP-1

Landscape Data

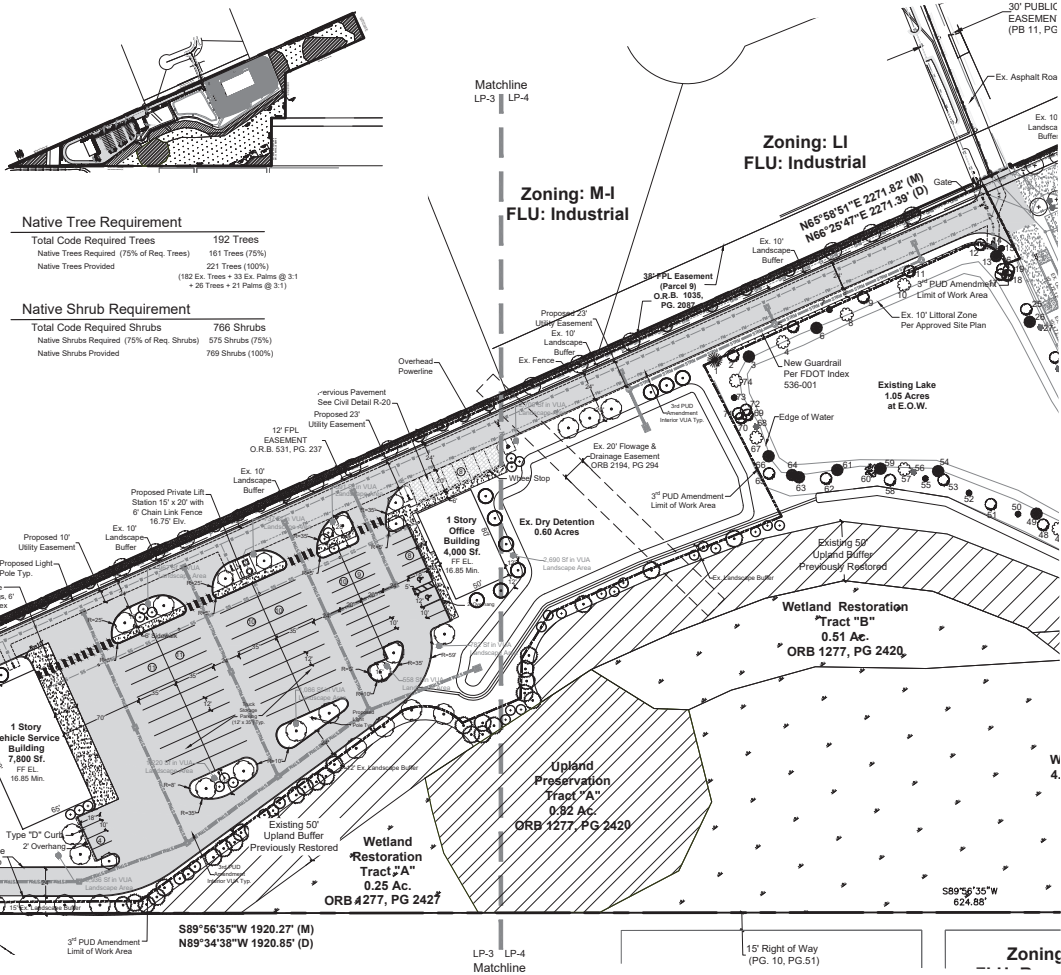
Required Landscape Area (20% of Developed Area)	
Total Developed Area	988,812 SF
Total Preserve Area	508,877 SF
Required (479,935 SF x 20%)	95,987 SF
Provided:	136,894 SF (28%)
1 Tree per 2,500 sf of Site Area	
Required (479,935 SF / 2,500 SF)	192 Trees
Provided:	235 Trees (182 Ex. Trees + 33 Ex. Palms @ 3:1 + 20 Trees + 21 Palms @ 3:1)
Existing Perimeter buffer adjacent to VUA	
A ten-foot wide strip of land exclusive of curbing along the entire side perimeter of a site, located between the side property lines and any vehicular use area, shall be landscaped. One tree per 30 LF and one shrub per 3 LF	
Existing North Buffer	
Trees Required (1,629 LF / 30)	55 Trees
Trees Provided:	56 Existing Trees
Shrubs Required (1,629 LF / 3)	543 Shrubs
Shrubs Provided:	543 Existing Shrubs
Existing South Buffer	
Trees Required (535 LF / 30)	18 Trees
Trees Provided:	29 Existing Trees (27 Trees + 6 Palms @ 3:1)
Shrubs Required (535 LF / 3)	178 Shrubs
Shrubs Provided:	179 Existing Shrubs
Existing Interior VUA Landscape Area	
(500 sf per 5000 sf of Interior Vehicular Use Area)	
Planting Area	
Required:	3,948.9 sf
Provided:	6,440 sf
(2 - 3" Cal. Trees per 5000 sf of Interior Vehicular Use Area)	
(36,489 / 5,000)	
Trees (3" Cal.)	16 Trees
Required:	19 Trees
Provided:	(12 Trees + 21 Palms @ 3:1)
Parking Islands	
(1 Tree per interior terminal island)	
Required:	6 Trees
Provided:	6 Trees

Landscape Notes

1. Plant and landscape materials shall conform to the standards for Florida No. 1, as given in the Grades and Standards for Nursery Plants, Parts I & II, as prepared by the Florida Dept. of Agriculture and Consumer Services.
2. Alternative plant species for required landscape may be permitted subject to review and approval by the Martin County Growth Management Department prior to installation.
3. All prohibited exotic or invasive species shall be removed from the entire site prior to the issuance of a Certificate of Occupancy.
4. All required landscaping shall be installed prior to the issuance of a Certificate of Occupancy.
5. No Cypress Mulch is to be used on site. Eucalyptus or Melaleuca Mulch is to be used in a 3" consistent layer in all planting beds.
6. Enhanced landscaping beyond minimum requirements will conform to all applicable sections of the Martin County Growth Management Department with Certification of Landscaping Installation and Maintenance.
7. This plan has been designed to meet the tree planting requirements contained within the FPL document entitled "Plant the Right Tree in the Right Place". For existing or proposed utilities, no tree shall be planted where it could, at a mature height conflict with overhead power lines.
8. A. Large trees (height at maturity of more than 30') shall be planted no closer than a horizontal distance of 30' from the nearest overhead power line.
9. B. Medium height trees (height at maturity between 20' and 30') shall be offset at least 20' and small trees (height at maturity of less than 20') require no offset.
10. C. No tree shrubs, hedges or vines shall be planted within 5' of an existing or proposed utility pole, guy wire or pad-mounted transformer.
11. D. Palms should be planted at a distance equal to or greater than the average frond length plus two (2) feet from tree species shall be selected as to minimize conflicts with existing or proposed utilities and power lines.

(3rd PUD Amendment Limit of Work Area)	
Perimeter buffer adjacent to VUA	
A ten-foot wide strip of land exclusive of curbing along the entire side perimeter of a site, located between the side property lines and any vehicular use area, shall be landscaped. One tree per 30 LF and one shrub per 3 LF	
Proposed West Buffer	
Trees Required (135 LF / 30)	5 Trees
Trees Provided:	5 Trees (3 Trees + 6 Palms @ 3:1)
Shrubs Required (135 LF / 3)	45 Shrubs
Shrubs Provided:	47 Shrubs
Proposed Interior VUA Landscape Area	
VUA TOTAL: 89,489 SF	
Drive Isle: 85,674 sf	
Parking Area: 6,129 sf	
Truck Storage Parking Area: 17,686 sf	
(500 sf per 5000 sf of Interior Vehicular Use Area) (89,489 / 5,000 x 500)	
Planting Area	
Required:	8,949 sf
Provided:	15,267 sf
(3" Cal. Trees per 5000 sf of Interior Vehicular Use Area)	
(89,489 / 5,000 x 2)	
Trees (3" Cal.)	766 Shrubs
Required:	575 Shrubs (75%)
Provided:	769 Shrubs (100%)
Parking Islands	
(1 Tree per interior terminal island)	
Required:	18 Trees
Provided:	20 Trees (15 Trees + 15 Palms @ 3:1)

Site Key



Irrigation Notes

1. Adequate irrigation of landscaped areas shall be provided for the first full growing season and continue thereafter only as necessary to maintain required vegetation in good and healthy condition.
2. Irrigation systems shall conform to the following standards: Irrigation systems shall be continuously maintained in working order and shall be designed not to overlap water zones or to water impervious areas.
3. No irrigation systems shall be installed or maintained abutting any public street which causes water from the system to overspray onto the roadway or to overlap water zones or to water impervious areas.
4. Irrigation Water Source: Well
5. Irrigation Plans shall be submitted with the certificate of completion prepared by a Landscape Architect prior to Certification of Occupancy is granted.

Legend

Upland Preservation

Wetlands

Upland Buffer

#

Existing Trees

Scale: 1" = 50'

0'

25'

50'

100'

150'

North

HJA DESIGN STUDIO

LANDSCAPE ARCHITECTS

3500 SW Corporate Parkway, Suite 203
Palm City, Florida 34990
T 772.678.7200
www.hjadesignstudio.com
LA 0000905

Coastal Waste & Recycling - PUD

Florida

Martin County

3rd Amendment - Landscape Plan

Copyright
The drawings are instruments of service to the
Landscape Architect. They are not products of design. All
ideas, designs, drawings, and plans are the property of
the designer, and are not to be used, copied, or
reproduced in any form, or by any means, without the
written consent of the designer.

Job No.	2024-09
Drawn By	EB
Checked By	MH
Approved By	MH
Submission Dates	01-14-2025
Revision Dates	
1st Resubmittal	07-24-2025
2nd Resubmittal	10-24-2025

LP-2

Coastal Waste & Recycling - PUD

Florida

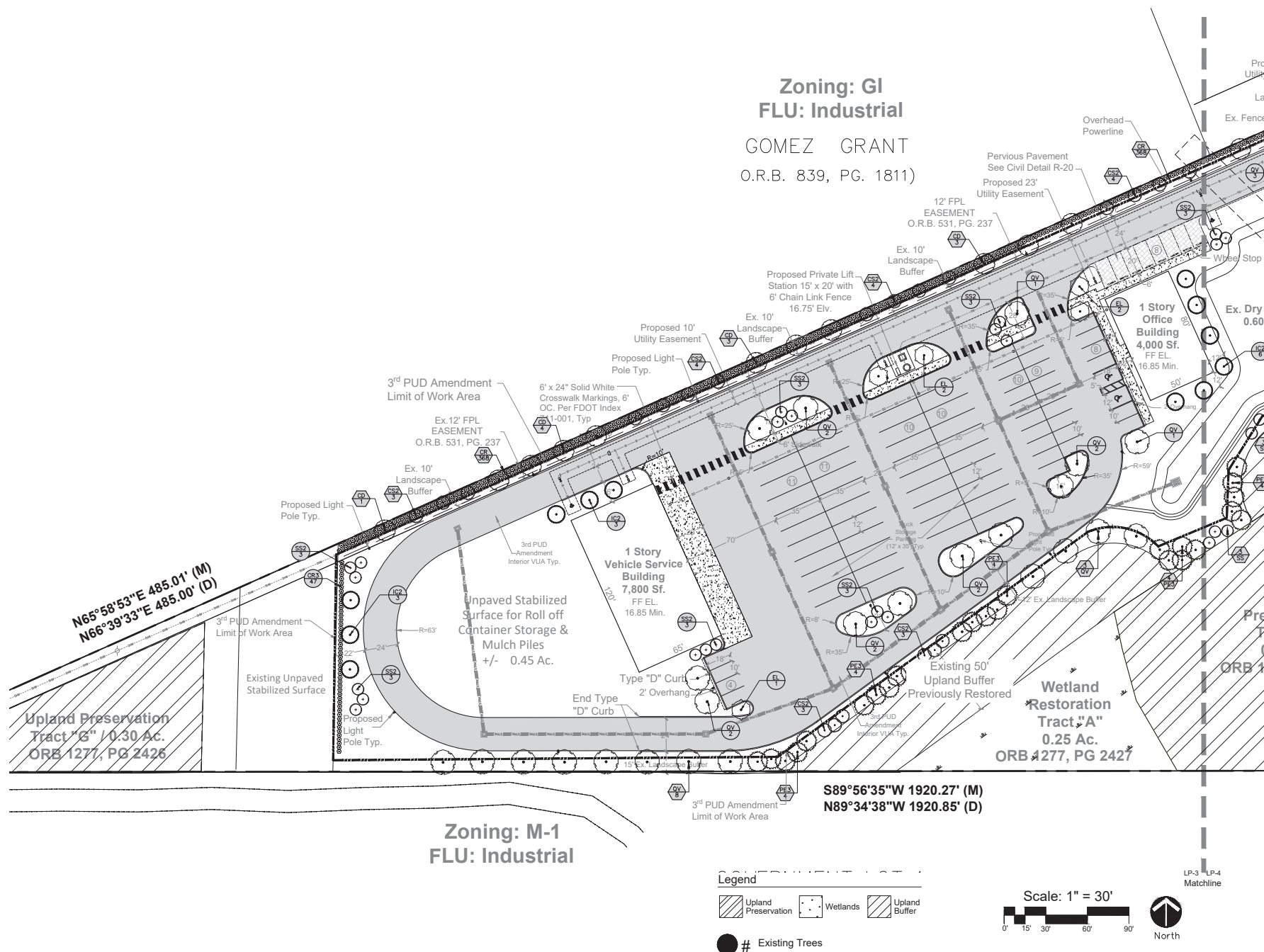
Martin County

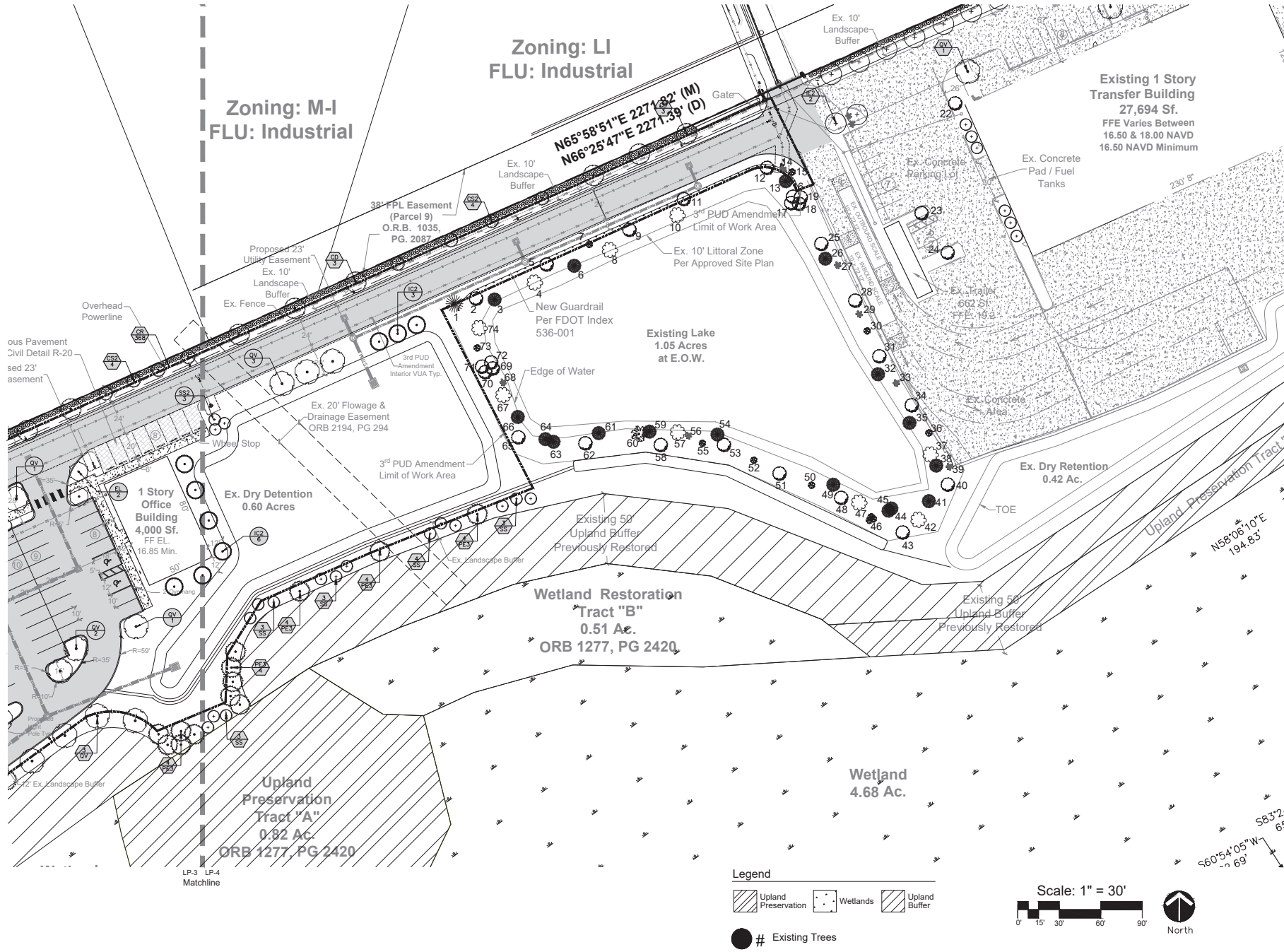
3rd Amendment - Landscape Plan

Copyright
The drawings are instruments of service to the
landscape architect. They are not products of design. All
ideas, designs, drawings, and plans are the property of
the designer, and are not to be used, copied, or
reproduced in any form without the written consent of
the designer.

Job No. 2024-09
Drawn By EB
Checked By MH
Approved By MH
Submission Dates 01-14-2025
Revision Dates
1st Resubmittal 07-24-2025
2nd Resubmittal 10-24-2025

LP-3





3500 SW Corporate Parkway, Suite 203
Palm City, Florida 34990
T 772.678.7200
www.hjadesignstudio.com
LA 0000905

Coastal Waste & Recycling - PUD

Florida

Martin County

3rd Amendment - Landscape Plan

Copyright
The drawings are instruments of service to the
landscape architect. They are not products of design. All
ideas, designs, drawings, and plans are the property of
the designer and are not to be used, copied, or
reproduced in any form without the written consent of
the designer.

Job No.	2024-09
Drawn By	EB
Checked By	MH
Approved By	MH
Submission Dates	01-14-2025
Revision Dates	
1st Resubmittal	07-24-2025
2nd Resubmittal	10-24-2025

LP-4

THE TREE, SHORTEN ONE, BY ABOUT ONE-HALF, BACK TO A BRANCH THAT POINTS AWAY FROM THE TREE AND IS AT LEAST ONE-THIRD THE DIAMETER OF THE CUT LEADER. REMOVE BROKEN PORTIONS OF DAMAGED BRANCHES BACK TO A LIVE LATERAL BRANCH.

Shrub/Groundcov

Martin County
Coastal Waste & Recycling - PUD
3rd Amendment - Landscape Specifications
Florida