



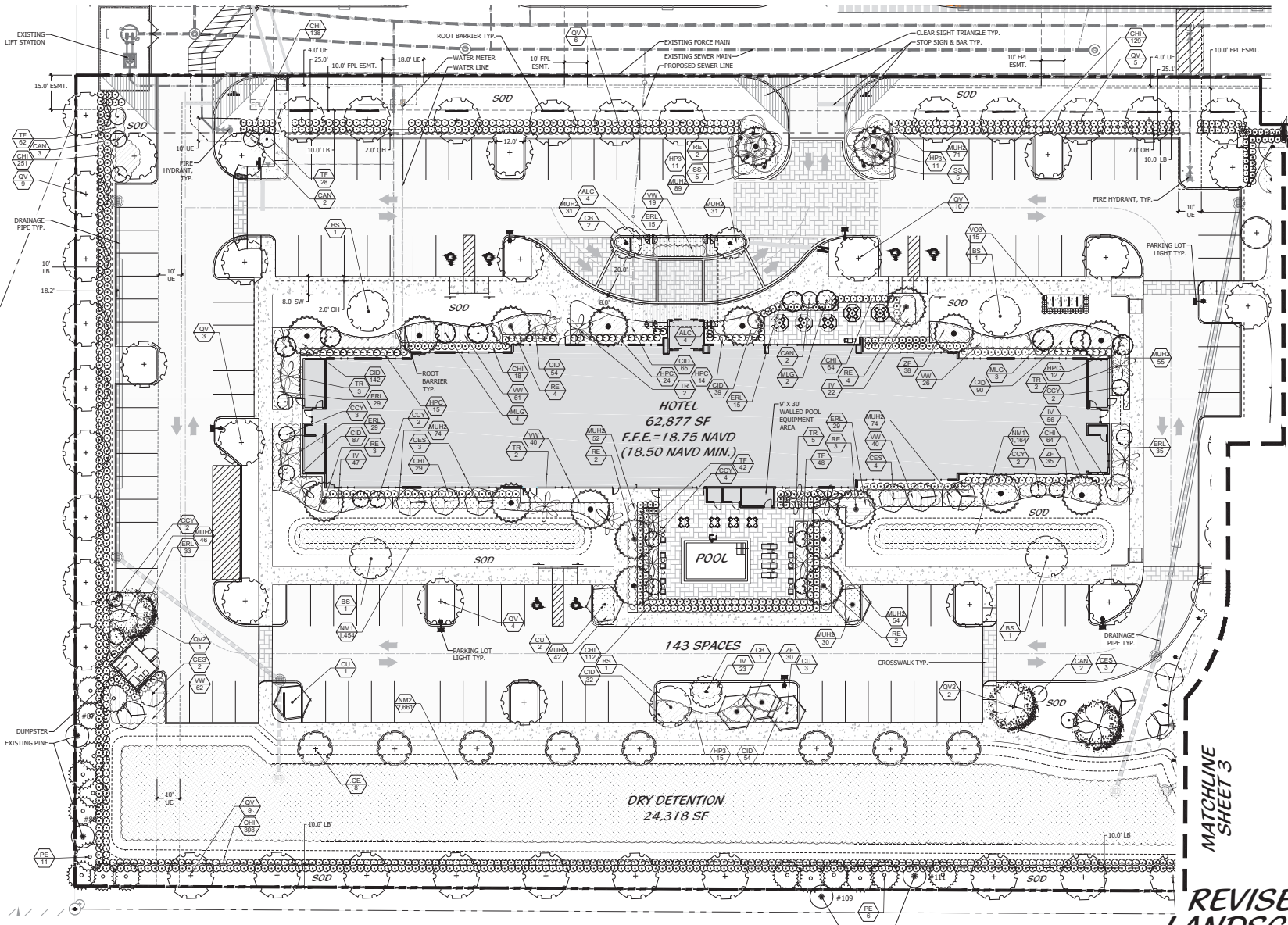


**Coleur & Hearing**

Landscape Architects  
Land Planners  
Environmental Consultants  
1934 Commerce Lane  
Suite 1  
Jupiter, Florida 33458  
561.747.6336 - Fax 747.1377  
www.coleurhearing.com  
Lic# LC-26000535

**Palm Pike Crossing**

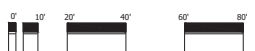
Bradford Trading Partners  
Martin County, Florida



**LEGEND**

LB	LANDSCAPE BUFFER	+	ADA SIGN
R	RADIUS	+	STOP SIGN
SB	SETBACK	+	BOLLARD/PATH LIGHT
SW	SIDEWALK	+	PARKING LOT LIGHT
TYP	TYPICAL		
LME	LAKE MAINTENANCE EASEMENT		
OH	OVERHANG		
FESMT	EXCAVATION		
UE	UTILITY EASEMENT		
UTZ	UPLAND TRANSITION ZONE		

**REVISED FINAL LANDSCAPE PLAN**



Scale: 1" = 20'



North

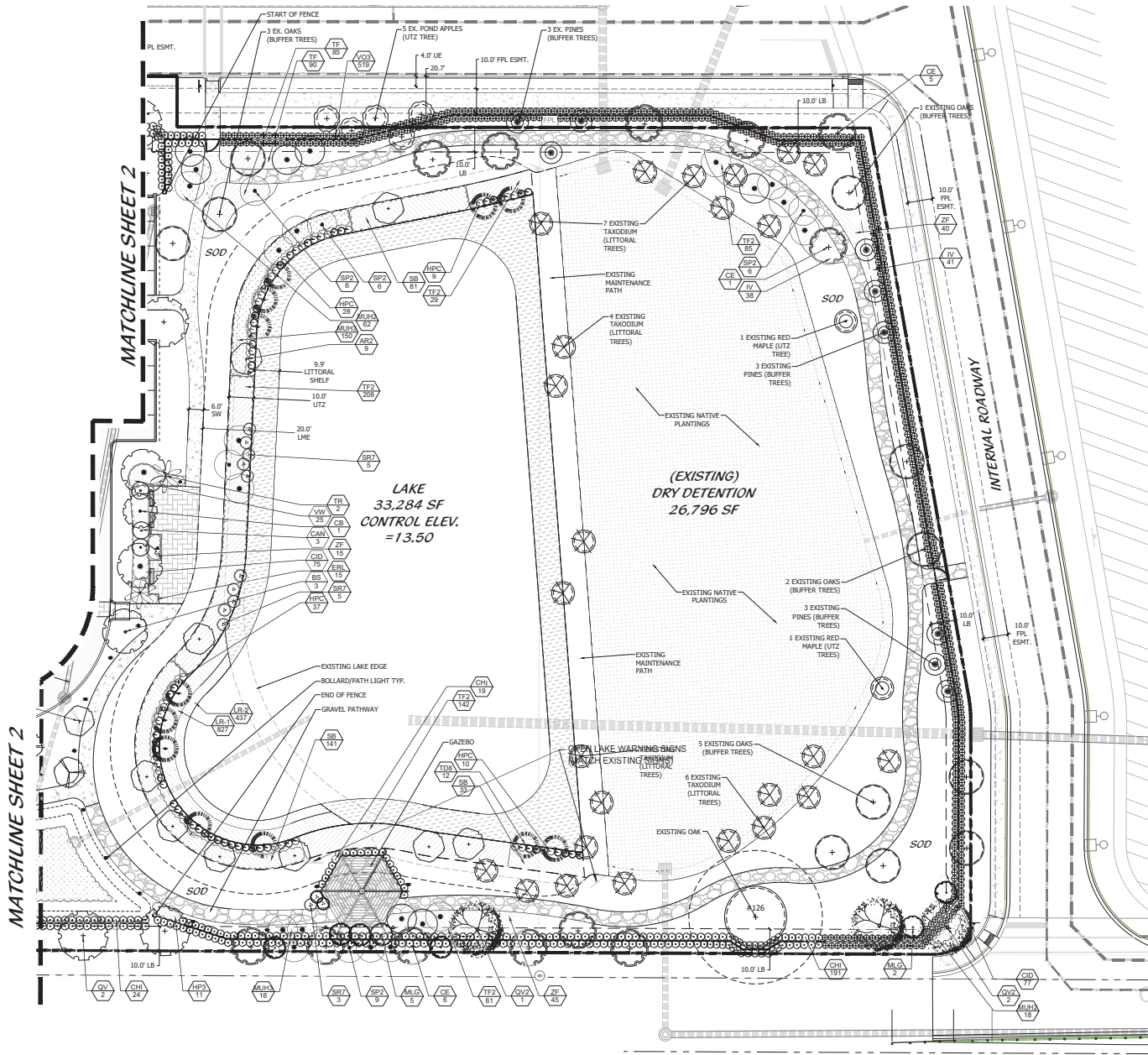
DESIGNED	ACELAH
DRAWN	ACE
APPROVED	LAM
JOB NUMBER	24-0111
DATE	05-01-20
REVISIONS	06-21-20
	10-29-20
	12-22-20
	01-14-21



**Coleur & Hearing**

Landscape Architects  
Landscape Planners  
Environmental Consultants  
1934 Commerce Lane  
Suite 1  
Jupiter, Florida 33458  
561.747.6336 - Fax 747.1377  
www.coleurhearing.com  
Lic# LC-26000535

**Palm Pike Crossing**  
Bradford Trading Partners  
Martin County, Florida



- LEGEND**
- LB LANDSCAPE BUFFER
  - R RADIUS
  - SB SETBACK
  - SW SIDEWALK
  - TYP TYPICAL
  - LME LAKE MAINTENANCE EASEMENT
  - CH OVERHANG
  - ESMT EASEMENT
  - UE UTILITY EASEMENT
  - UTZ UPLAND TRANSITION ZONE
  - ADA SIGN
  - STOP SIGN
  - BOLLARD/PATH LIGHT
  - PARKING LOT LIGHT

**REVISED FINAL  
LANDSCAPE PLAN**



Scale: 1" = 20'



North

DESIGNED	ACELAH
DRAWN	ACE
APPROVED	LAH
JOB NUMBER	24-0111
DATE	05-01-20
REVISIONS	05-21-20
	10-29-20
	12-22-20
	01-14-22

SHEET 3 OF 4

© COLEUR & HEARING, INC.  
This drawing is the property of the architect and may not be used for reproduction or other projects without the approval of writing with the architect. Intellectual property shall be acknowledged by the architect.

