

**Port Salerno**

**Updates**

**Dec**

**See how we're doing**



**MARTIN COUNTY**  
*Community Redevelopment Agency*

**25**



# 01



MARTIN COUNTY  
*Community Redevelopment Agency*

## Projects

New Monrovia Park

# New Monrovia Park

- **Field leveling**
- **New basketball court**
- **Shade structures**
- **Sidewalks**
- **Benches**
- **Bike rack**

Bid Opening – Nov. 5th  
Bid Award – Dec. 9th  
Notice to Proceed – TBD



MARTIN COUNTY  
*Community Redevelopment Agency*



02

# Updates

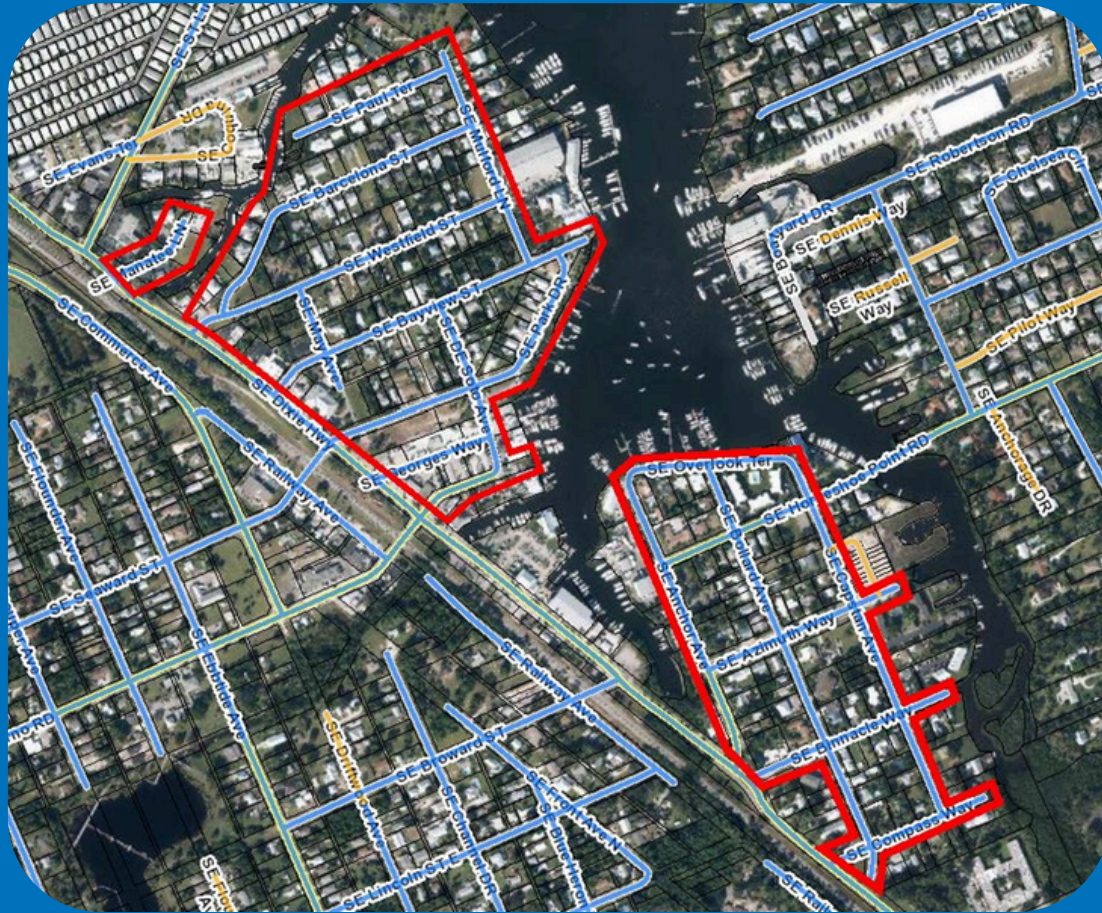
Port Salerno Peninsula – Public Outreach  
Capital Project's Timeline  
Utility Service's Timeline





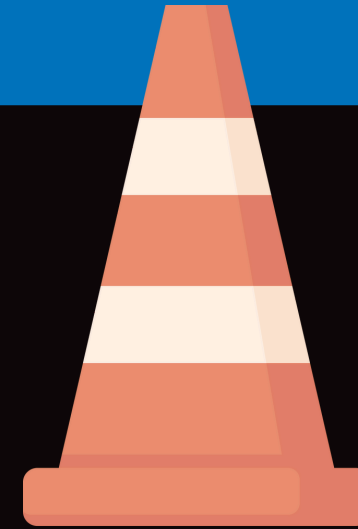
# Port Salerno Peninsula Public Outreach

These are the tools that were used to inform the public of the project.



Public Info Meeting  
Held at 60% Plans

March 2, 2023



Construction Begins  
Letter mailed out

April 15, 2025

# Capital Project's Timeline

MARTIN COUNTY  
PUBLICWORKS  
@WORK

## PORT SALERNO PENINSULA NEIGHBORHOOD RESTORATION

### PUBLIC MEETING - THURSDAY, MARCH 23

Martin County Public Works invites you to join us for a community information meeting and brief presentation on the proposed improvements to the Port Salerno Peninsula neighborhood. We welcome your attendance and feedback.

For more information contact:

► Charly Perez

cperez@martin.fl.us or call (772) 320-3162

This document may be reproduced upon request in an alternative format by contacting the County ADA Coordinator (772) 320-3131, the County Administration Office (772) 288-5400, Florida Relay 711, or by completing our accessibility feedback form at [www.martin.fl.us/accessibility-feedback](http://www.martin.fl.us/accessibility-feedback).



## Public Information Meeting

## Construction Begins

MARTIN COUNTY  
PUBLICWORKS  
@WORK

## PORT SALERNO PENINSULA NEIGHBORHOOD RESTORATION

### CONSTRUCTION BEGINNING

Starting next month in May, the Port Salerno Peninsula Neighborhood Restoration Project Phase 1 will include detention area excavation, swale grading, new drainage structures, driveway reconstruction, sidewalk reconstruction, and boring for new sanitary service lines.

For more information contact:

► Drainage Questions: [clobello@martin.fl.us](mailto:clobello@martin.fl.us) & 772-288-5792

Utility Questions: 772-221-1434







**MARTIN COUNTY**  
**BOARD OF COUNTY COMMISSIONERS**  
**UTILITIES & SOLID WASTE DEPARTMENT**  
PO Box 9000 Stuart, FL 34995-9000

EILEEN VARGAS  
STACEY BETHINGTON  
J. BLAKE CAPPS  
SARAH BEARD  
EDWARD V. CHAMPS

Commissioner, District 1  
Commissioner, District 2  
Commissioner, District 3  
Commissioner, District 4  
Commissioner, District 5

DON G. DONALDSON, P.E. County Administrator  
SARAH W. WOODS County Attorney

TELEPHONE (772) 288-5400  
WEBSITE [www.martin.fl.us](http://www.martin.fl.us)

This document may be reproduced upon request in an alternative format by contacting the County ADA Coordinator (772) 320-3131, the County Administration Office (772) 288-5400, Florida Relay 711, or by completing our accessibility feedback form at [www.martin.fl.us/accessibility-feedback](http://www.martin.fl.us/accessibility-feedback).

May 19, 2025

«AddressBlock»

Re: Port Salerno Peninsula "Connect-to-Protect" Force Main Project  
PCN#:  
Service Address:

Dear Property Owner:

Martin County Utilities (MCU) is commencing construction to install small diameter force mains which will provide sanitary sewer service to your neighborhood as part of our "Connect-to-Protect" Program. The attached Frequently Asked Questions information includes system design, construction schedule, and pricing options in addition to answering any questions about the program.

Connection to the mains is voluntary unless you have a failing septic system, with no cost to you until you need to connect. This program will utilize individual grinder stations at each home to connect to the new force mains along the edge of your street. Construction is expected to commence May 2025 and be significantly complete in December 2025.

You will receive another letter from us once the system is complete and available to connect.

Thank you in advance for your participation in this important project.

Cordially,

*Leo Repetti, PE*  
Technical Services Administrator  
Utilities and Solid Waste Department  
(772) 320-3065 phone  
[L.Repetti@martin.fl.us](mailto:L.Repetti@martin.fl.us)

Cc: Samuel Amerson, P.E., Director, Utilities & Solid Waste

USD 817953

# Utility Service's Timeline

Letter sent out to residents  
on May 19, 2025

Early 2026, letter will be sent out to  
homeowners to allow them to start  
connecting to sewer.



# 03

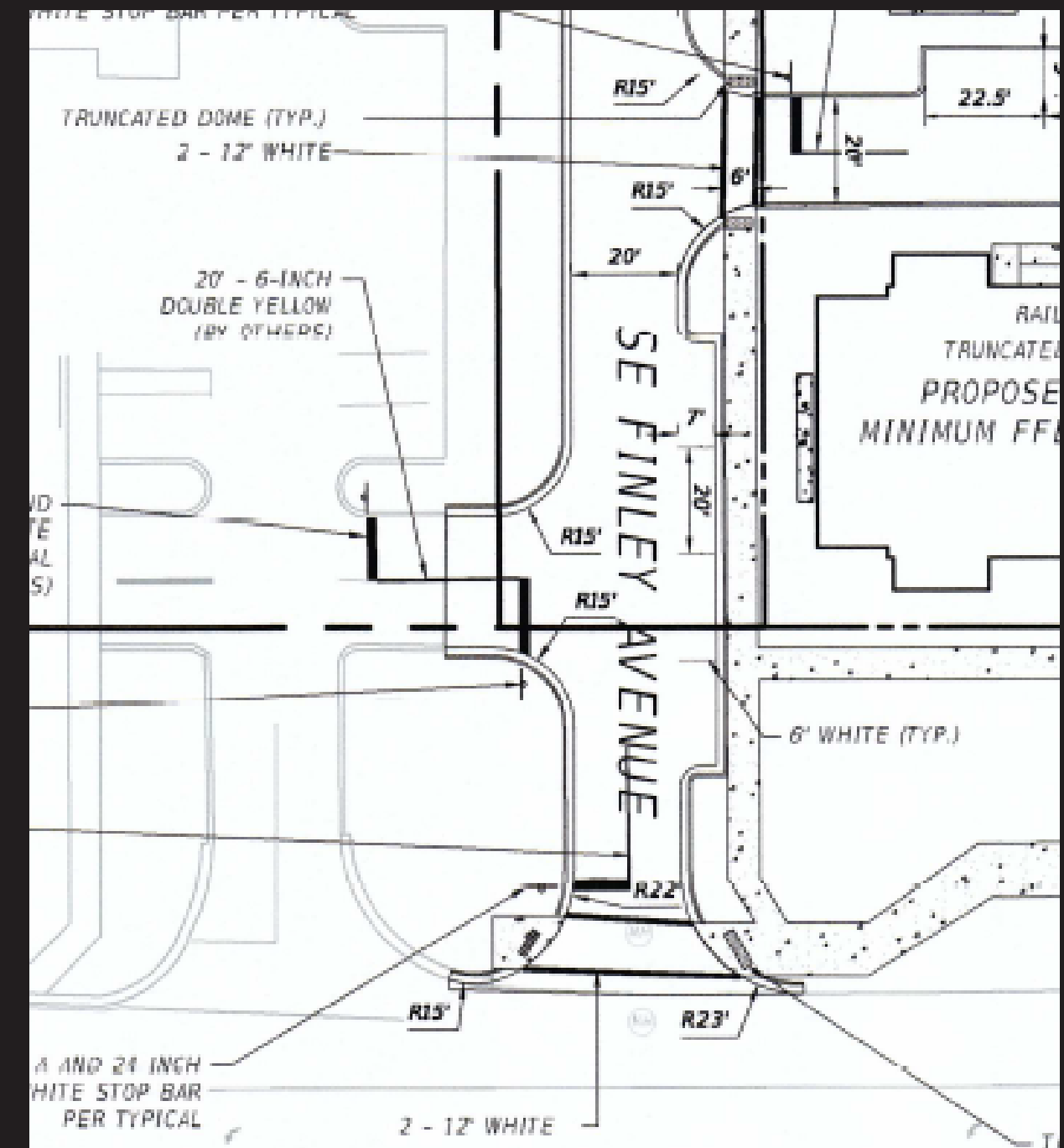
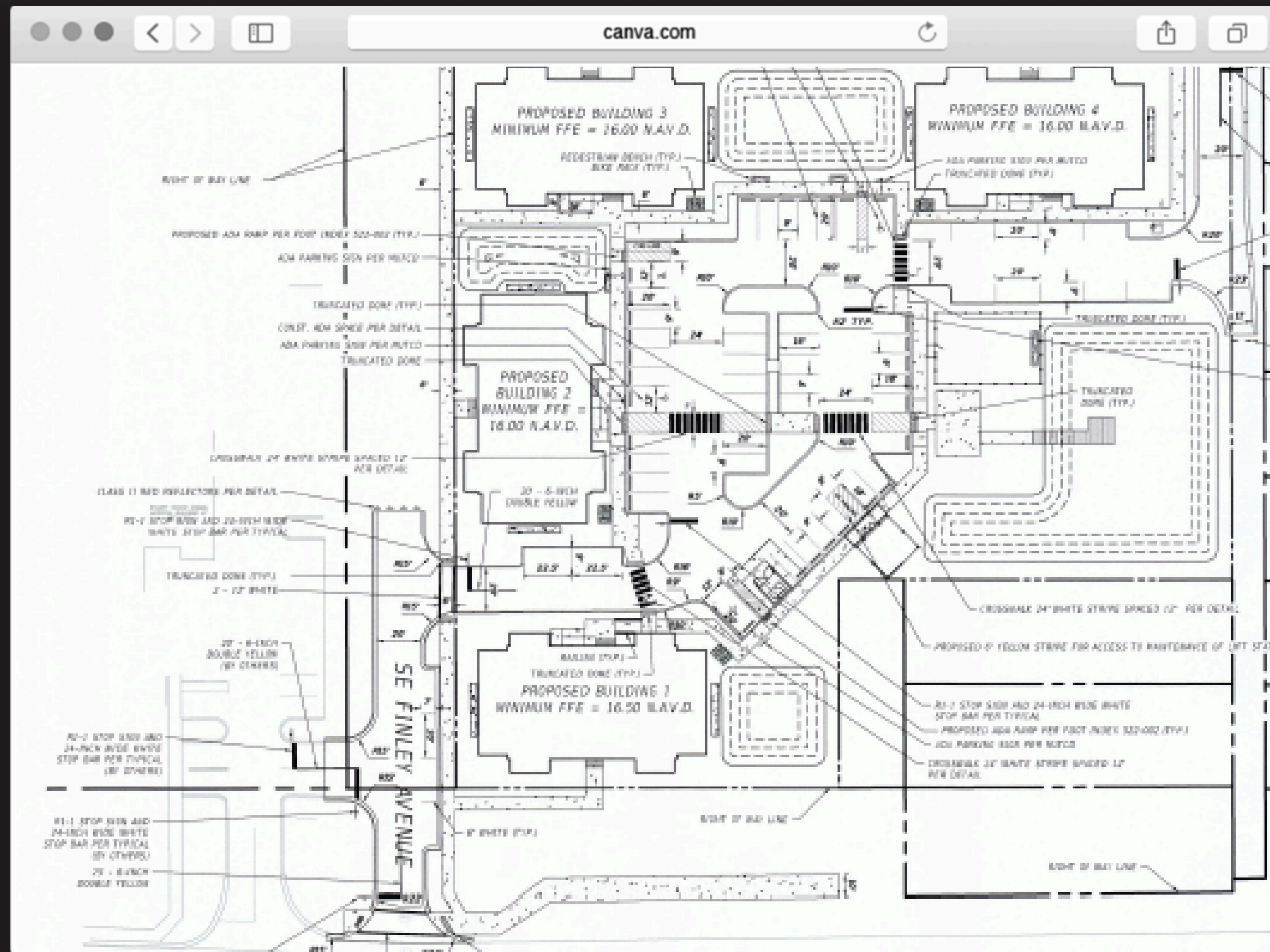


MARTIN COUNTY  
*Community Redevelopment Agency*

## Updates

The Cove - Joint Access on Cove Road  
SHIP Program Follow-up

# The Cove



Joint Access

# How does it work?

The recorded Development Order for the Stuart Sound Animal Hospital includes a requirement that the direct access to SE Cove Road be removed as follows:

*The access to SE Cove Road is temporary and shall be removed upon the construction of either SE Finley Avenue or the construction of improvements on lots 15 and 16, whichever comes first. Upon removal, access to SE Cove Road will be via a direct connection to SE Finley Avenue or via cross access through lots 15 and 16, which results in the loss of temporary parking stalls. The Owner agrees to remove the temporary driveway and make modifications necessary to provide alternative access to SE Cove Road within ninety days of receiving written notification from the County Engineer that either SE Finley Avenue or the improvements on lots 15 and 16 are substantially complete.*



Stuart Sound  
Development Order





# SHIP follow-up



Flyer provided

For more information contact:

Julie Stellatos

Human Services Housing Program Coordinator

[jstellatos@martin.fl.us](mailto:jstellatos@martin.fl.us) / 772-288-5456





# Questions