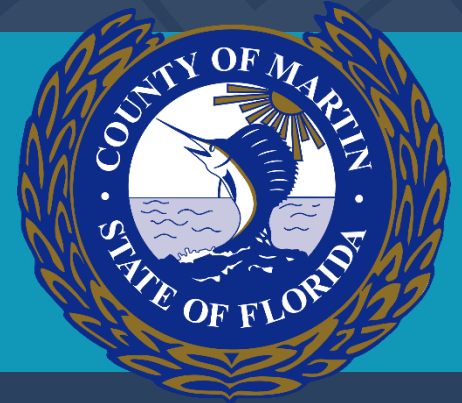




# Growth Management

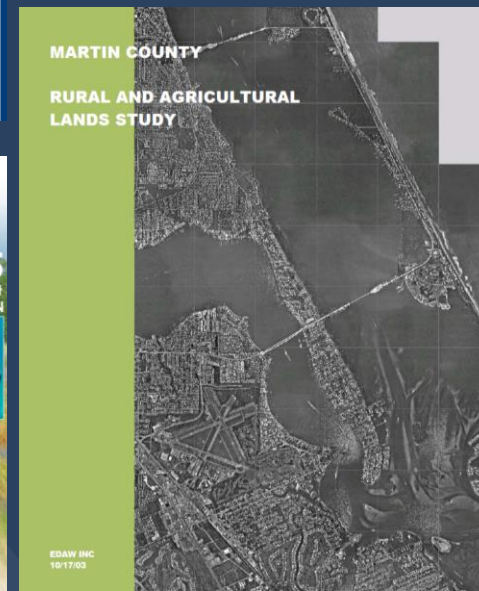
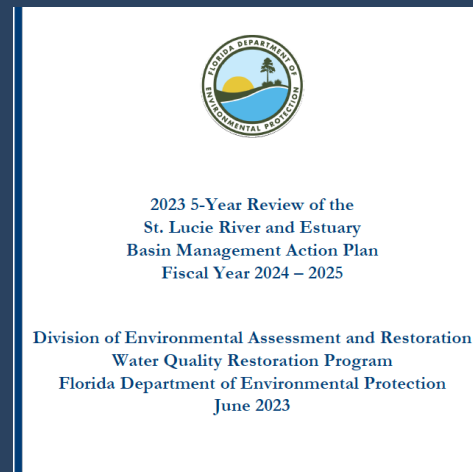
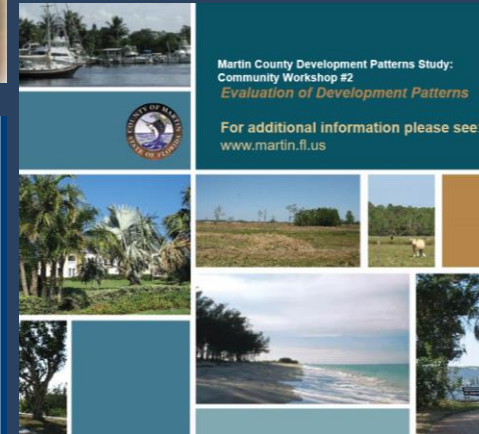
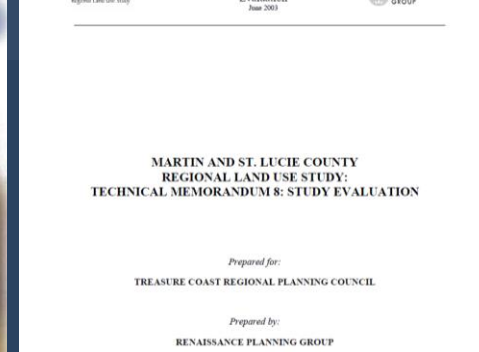
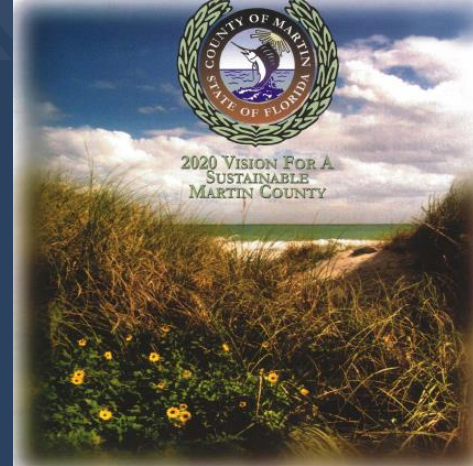


November 12 , 2024 Update

Paul Schilling, Director

# Past Western Lands Studies Projects

- The 2020 Vision For a Sustainable Martin County
- Comprehensive Everglades Restoration Plan
- Martin-St. Lucie Regional Land-Use Study
- Rural and Agricultural Lands Inventory
- Rural Lands Symposium
- Development Patterns Study
- Land Protection Incentives Amendment (Valliere Amendment)
- Rural Lifestyle Land Use Presentation
- St. Lucie Basin Management Action Plan (BMAP)



**LAND PRESERVATION INCENTIVE AMENDMENT**  
 The following text contains changes approved by the Board of County Commissioners on August 21, 2007 for transmittal to the Department of Community Affairs.

New section 44E.7 (4.4.E pertaining to natural resource protection):

7. Objective. Martin County shall create opportunities for the permanent preservation of contiguous open space, environmentally sensitive land and agricultural land uses while maintaining residential capacity as it existed on January 1, 2007. For the purposes of Section 44E.7, and supporting paragraphs, the definition of open space, found in Section 94A.11, CDEP, shall not include roads, highways and their median strips and berms. This objective is intended to encourage the conveyance of fee simple title of land listed for public acquisition by state, regional or local agencies as part of established conservation programs to state, regional or local environmental or government agencies or land trusts. Lands listed for acquisition include, but are not be limited to, land designated for public acquisition under the Save Our Rivers program, the Florida Forever program, the County's conservation land program, the Indian River Lagoon, North Palm Beach, and the Lake Okechobee portions of the Comprehensive Everglades Restoration Program (CERP), as well as Northern Everglades and Estuaries Protection Program.



## Past Studies being Analyzed:

- The 2020 Vision For a Sustainable Martin County (1998-2000)
- Comprehensive Everglades Restoration Plan (2000)
- Martin-St. Lucie Regional Land-Use Study (2002-2003)
- Rural and Agricultural Lands Inventory (2003)
- Rural Lands Symposium (2003)
- Development Patterns Study (2005-2007)
- Land Protection Incentives Amendment (Valliere Amendment 2007-2010)
- Rural Lifestyle Land Use Presentation (2022)
- St. Lucie Basin Management Action Plan (BMAP) (2013)



# 2020 Vision For a Sustainable Martin County

## Land Use Vision for Sustainability

### Key Existing Policies

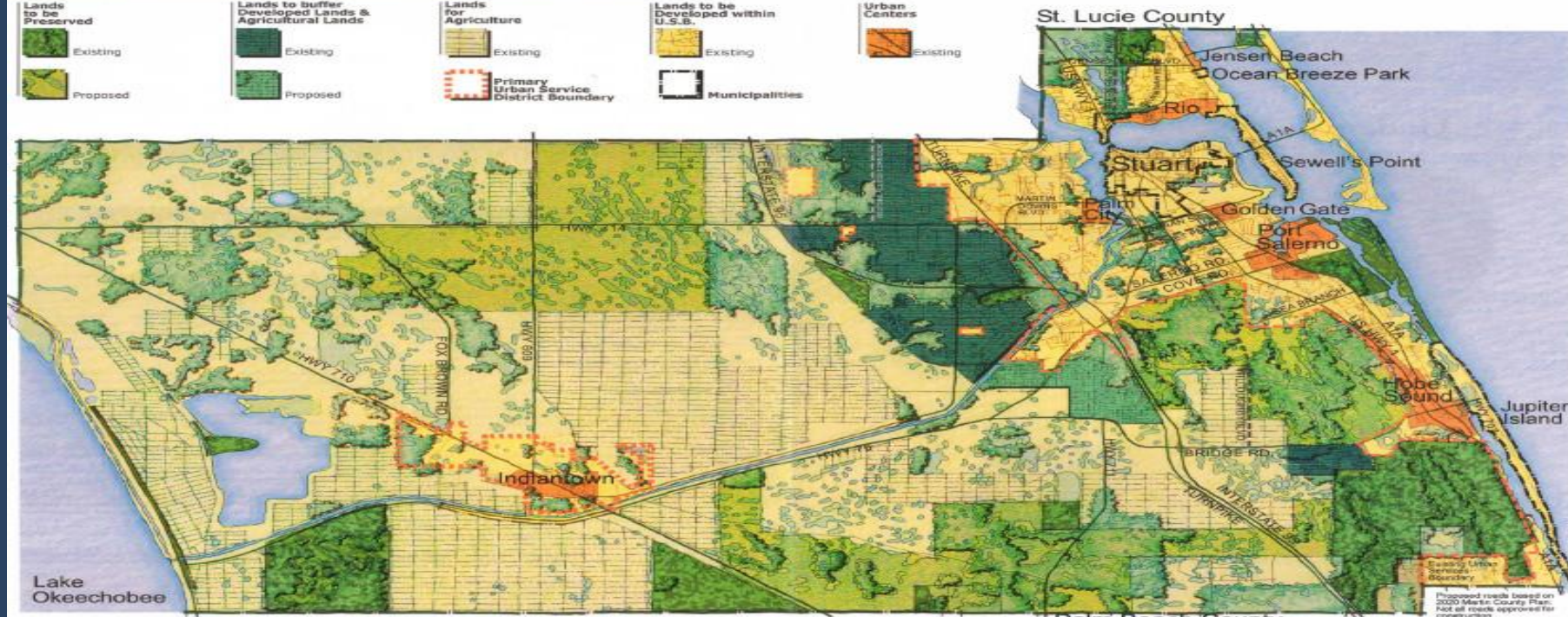
- No wetland impacts
- Four story height limit
- Preserve 25% of native upland habitat (10% of common habitat in agricultural land use)
- Urban Service District

### Vicinity Map



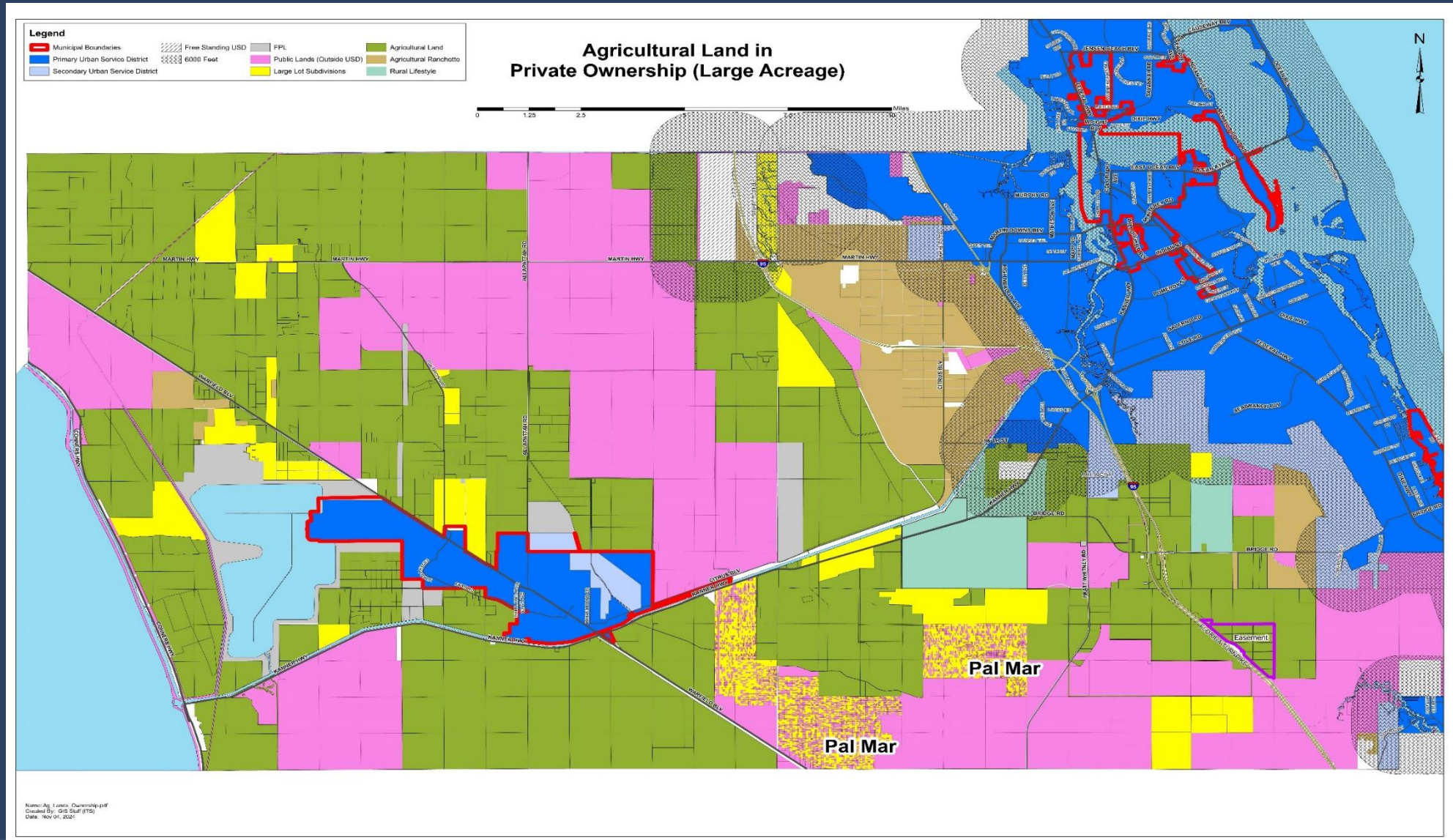
### Land Use Vision Legend

Lands to be Preserved	Lands to buffer Developed Lands & Agricultural Lands	Lands for Agriculture	Lands to be Developed within U.S.B.	Urban Centers
Existing	Existing	Existing	Existing	Existing
Proposed	Proposed	Primary Urban Service District Boundary	Municipalities	





# Agricultural Land in Private Ownership (Large Acreage)



## Milestones:

- Began August 2024
- Task 1 – Compendium of previous studies and recommendations (December)
- Task 2, 3 – Potential strategies to consider (February)
- Task 4 – Completion and presentations (Spring 2025)

# Growth Management



Thank you