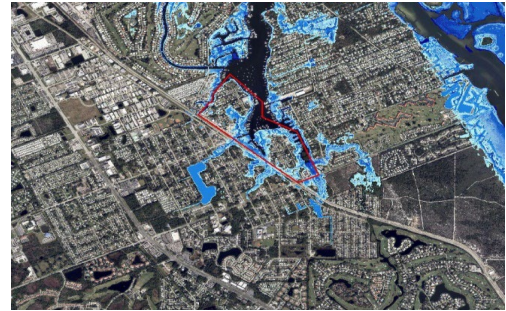


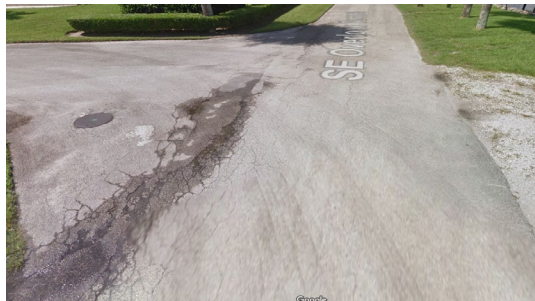
Port Salerno Peninsula Neighborhood Restoration Amended 2/11/2025

Category Non-concurrency
Project Number 101783
Location Stuart
District 4
Project Limits Local roadways between Dixie Highway, St. Lucie Blvd., Compass Way, and Manatee Pocket
Related Projects Port Salerno Neighborhood Restoration; Rocky Point
Lead Dept/Division Neighborhood Improvements
Year Project Initiated Public Works/Capital Projects
 2019



Project Life Cycle 25 Years

Resilience Requirements ☒ 2040 Vulnerability ☒ 2070 Vulnerability ☒ 2100 Vulnerability



DESCRIPTION

Infrastructure Reinvestment Program project includes the replacement of drainage structures, regrading of drainage swales, the addition of sewer force main, pavement milling & resurfacing, and replacement of sidewalk & other ancillary items within the neighborhood. This project will be coordinated with the Martin County Utilities & Solid Waste Department septic to sewer program.

BACKGROUND

In FY16, the Board appropriated \$5.4M in Ad Valorem and \$9M in Franchise Fees to reduce the infrastructure backlog. There are several areas of the neighborhood with a poor drainage health index and low pavement rating.

PROJECT ORIGATION

Infrastructure Needs

JUSTIFICATION

The funding will provide for improvements to public facilities that eliminate public hazards, aid in the renovation of worn-out facilities that contribute to achieving or maintaining standards for levels of service adopted in the Comprehensive Growth Management Plan, and significantly reduce the operating cost of providing a service or facility or otherwise mitigate impacts of public facilities on future operating budgets.

Expenditures	Total	To Date		Funded					Unfunded
				FY25	FY26	FY27	FY28	FY29	FY30-FY34
Design	153,000	153,000							
Construction	1,897,544			1,897,544					
Expenditure Total	2,050,544	153,000	0	1,897,544	0	0	0	0	0
Revenues	Total	To Date	Carryover	FY25	FY26	FY27	FY28	FY29	FY30-FY34
Road MSTU	477,520	153,000	324,520						
Franchise Fees	1,573,024		1,573,024						
Revenue Total	2,050,544	153,000	1,897,544	0	0	0	0	0	0
Total Unfunded									0

OPERATING BUDGET IMPACT

Maintenance costs during the first five years after drainage replacement, resurfacing and restriping will be minimal;

Drainage structures installed have a 50-100 year life cycle;

Sewer force main installed have a 50-100 year life cycle

Resurfaced asphalt pavement will have a 25-30 year cycle at \$125,000/mile