

GOLDEN GATE NAC

STORMWATER TREATMENT AREA (STA) NORTH OUTFALL FLOOD MITIGATION

JUNE 1, 2026



MARTIN COUNTY ►
PUBLICWORKS
@WORK



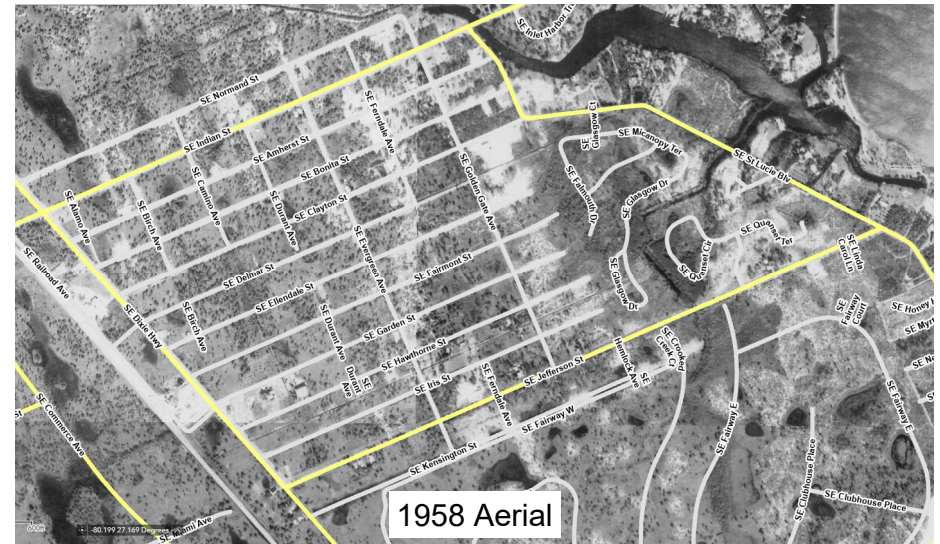
LOCATION MAP



MARTIN COUNTY
PUBLICWORKS
@WORK

HISTORY

- Platted in 1925
- Mostly residential with commercial use on the west boundary
- No formal drainage system in the area
- General stormwater features consists of roadway swales with limited culverts and 4 main ditches:
 - Delmar (north)
 - Barbershop (middle)
 - Kensington St. (south)
 - Hemlock (north-south)



HISTORICAL PHOTOS



MARTIN COUNTY
PUBLICWORKS
@WORK

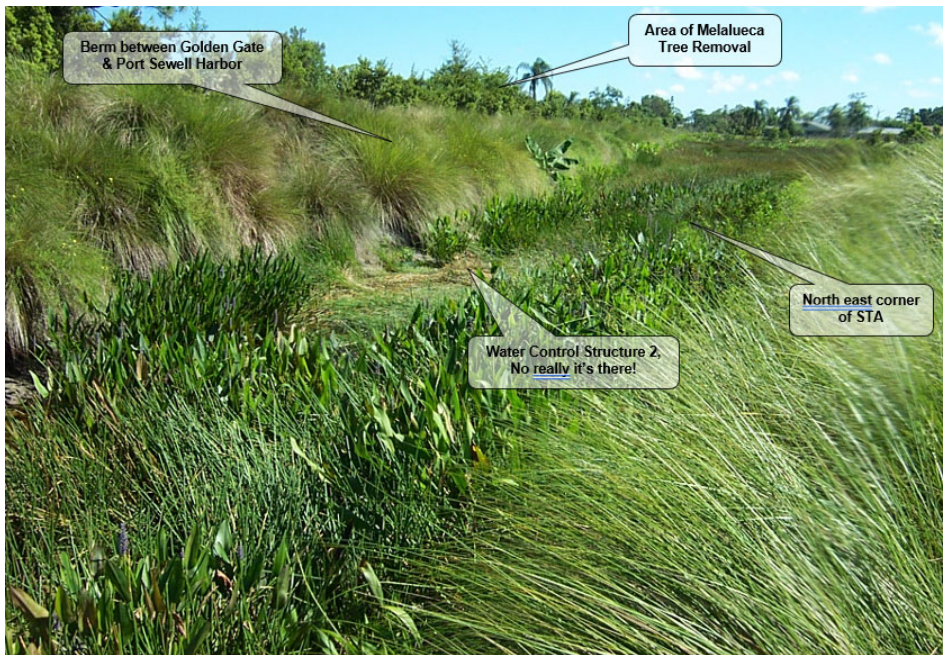


CURRENT PHOTOS



MARTIN COUNTY
PUBLICWORKS
@WORK

COMPARISON PHOTOS



October 2005



November 2025



PROJECT

- ▶ Raise the current weir from 0.5 feet NAVD to approximately 2.5 or 3.0 feet NAVD
- ▶ Replace the 3 existing first-generation baffle boxes with second generation baffle boxes
- ▶ Explore dredging the STA and turning it into a wet detention pond instead of a shallow marsh
- ▶ Explore dredging the two (2) dry detention ponds and turning them into wet detention ponds
- ▶ Permit and design the system to accommodate the increase in impervious area from the CRA Street Plan



MARTIN COUNTY
PUBLICWORKS
@WORK

- ✓ Received \$400,000 Water Quality Grant for Baffle Boxes
- ✓ Received \$180,000 Resilient



INITIAL ANALYSIS

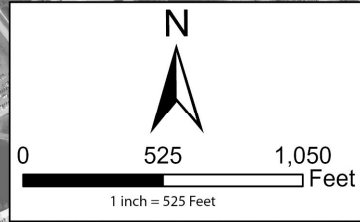
10-Year, 24-hour storm event (7.84 inches)

High Tide 3.48 feet NAVD

Year 2070



MARTIN COUNTY
PUBLICWORKS
@WORK



Legend

- Model Boundary
- 10-Year/24-Hour Modeled Inundation Extents
- Existing Conditions
- 2070



ULTIMATE BUILD OUT ANALYSIS

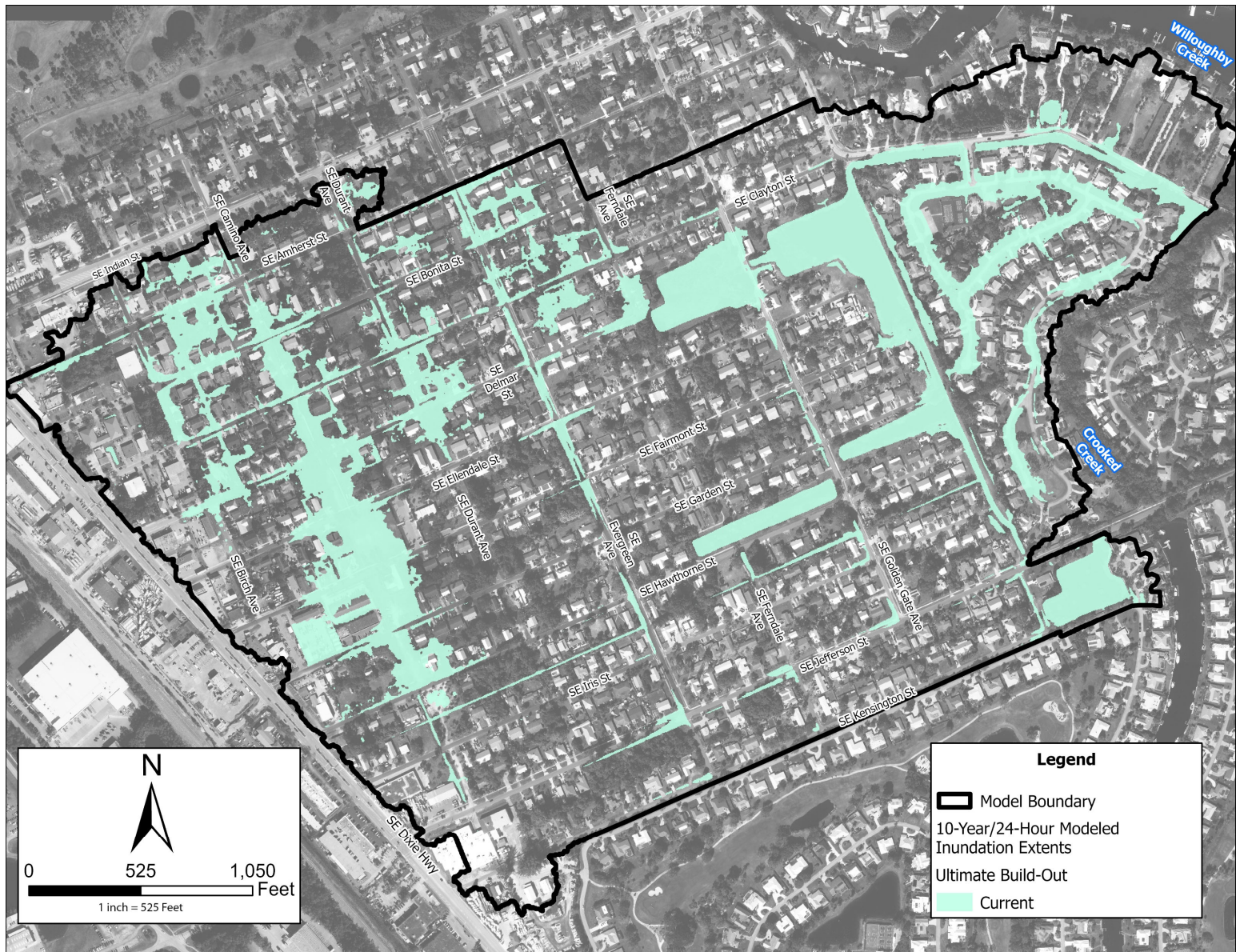
10-Year, 24-hour storm event (7 inches)

High Tide 2.56 feet NAVD

Present Day



MARTIN COUNTY
PUBLICWORKS
@WORK





ULTIMATE BUILD OUT ANALYSIS

10-Year, 24-hour storm event (7.84 inches)

High Tide 3.48 feet NAVD

Year 2070



MARTIN COUNTY
PUBLICWORKS
@WORK

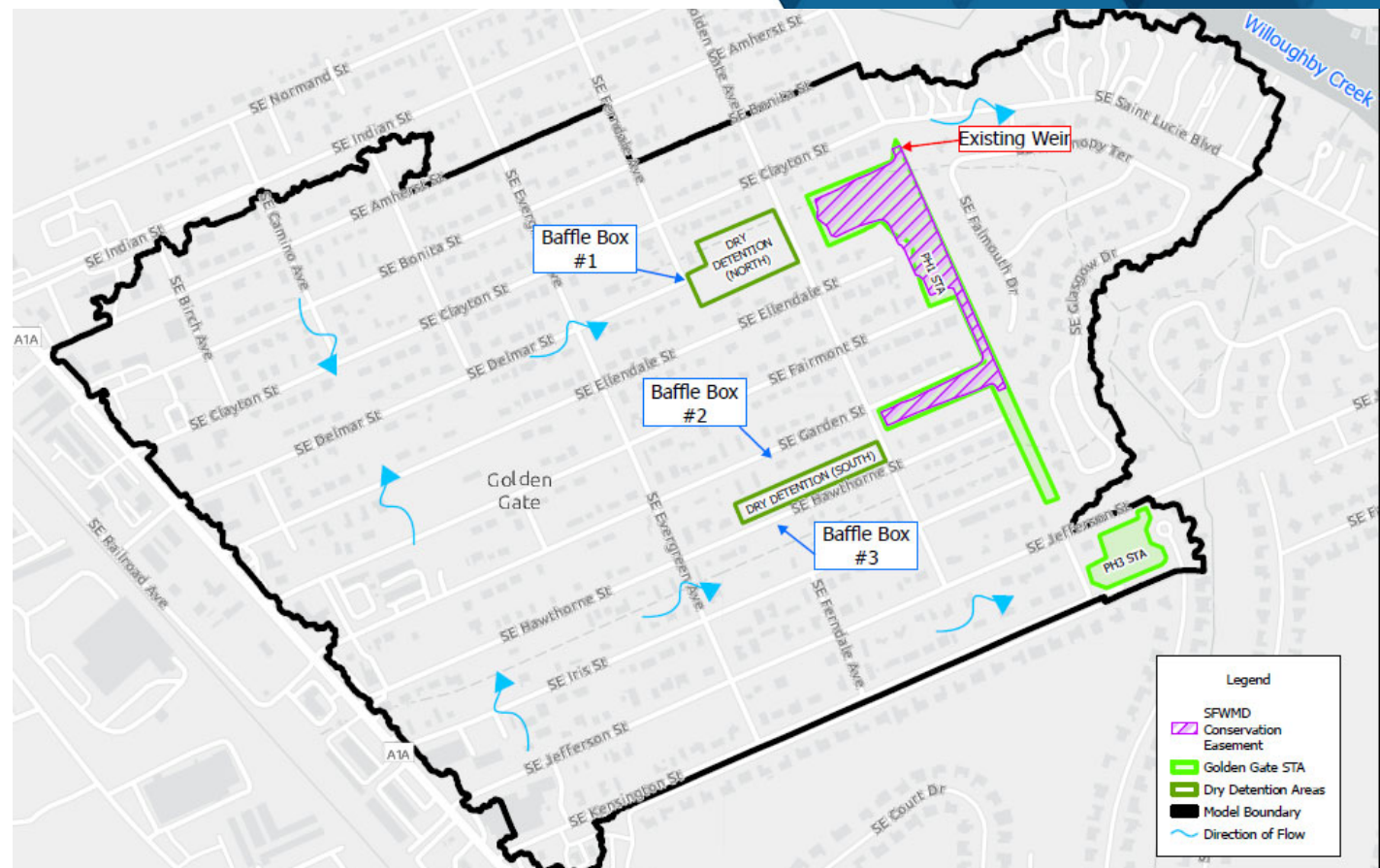


NEXT STEP

- Meeting with SFWMD to discuss issues
- Conduct the proposed condition analysis
- Submit a SFWMD permit
- Construct the project



MARTIN COUNTY
PUBLICWORKS
@WORK

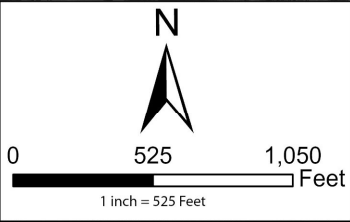
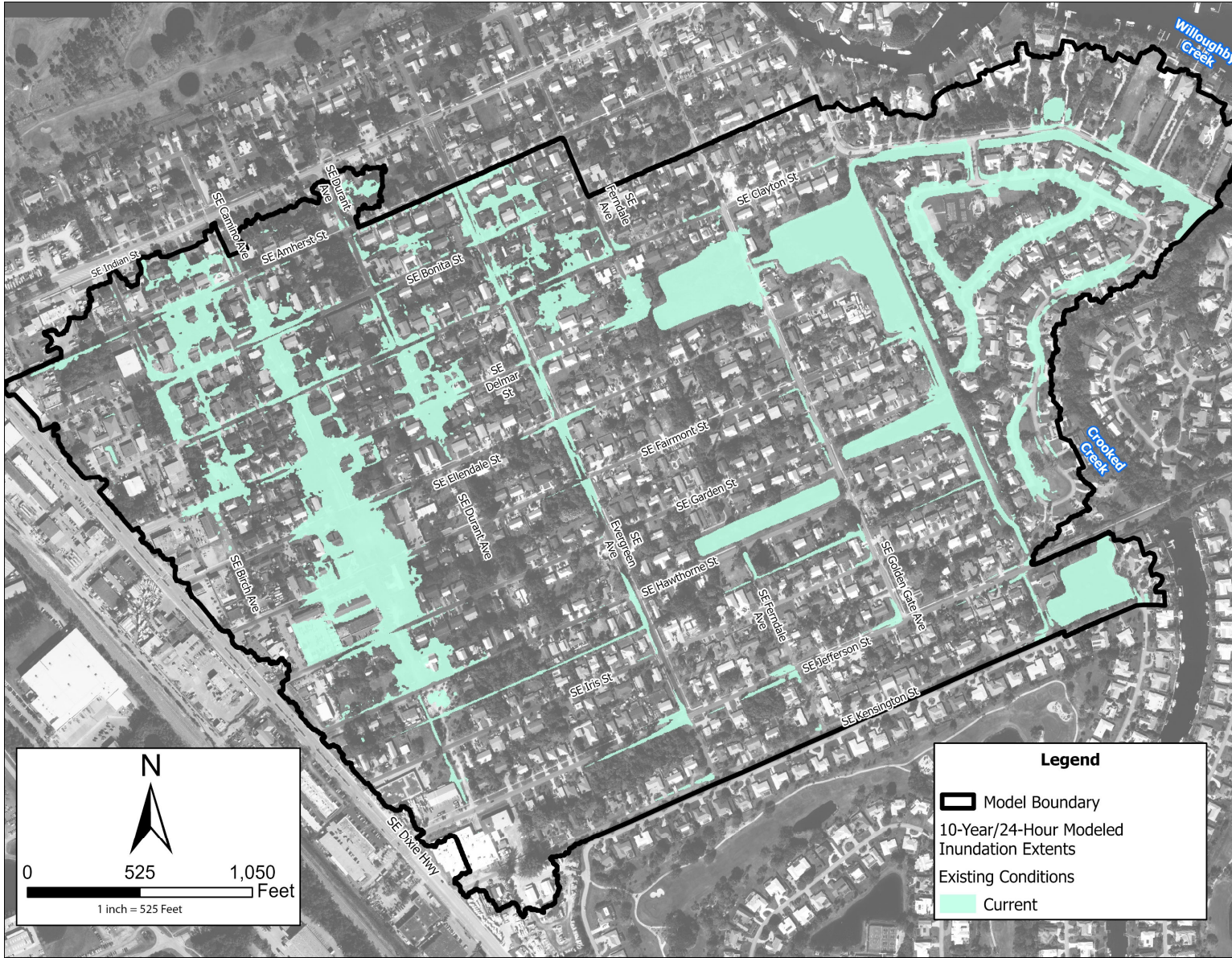




DISCUSSION, QUESTIONS, AND FEEDBACK



MARTIN COUNTY
PUBLICWORKS
@WORK



Legend

- Model Boundary
- 10-Year/24-Hour Modeled Inundation Extents
- Existing Conditions
- Current