

# GOLDEN GATE NAC

## STORMWATER TREATMENT AREA (STA) NORTH OUTFALL FLOOD MITIGATION

APRIL 13, 2026

---



MARTIN COUNTY ►  
PUBLICWORKS  
@WORK



# LOCATION MAP



MARTIN COUNTY  
**PUBLICWORKS**  
**@WORK**







# HISTORICAL PHOTOS



MARTIN COUNTY  
PUBLICWORKS  
@WORK

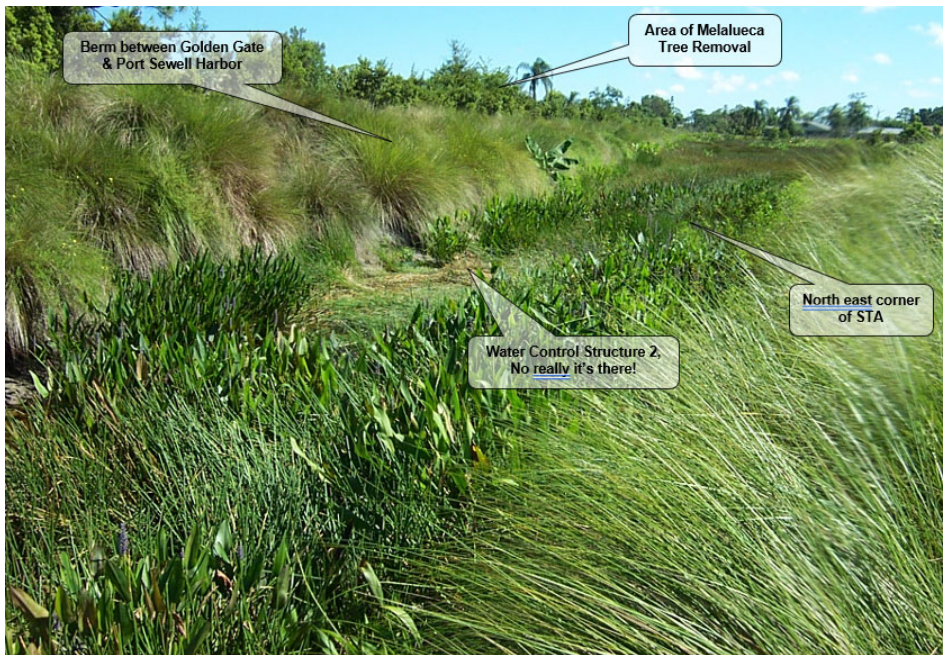


# CURRENT PHOTOS



MARTIN COUNTY  
PUBLICWORKS  
@WORK

# COMPARISON PHOTOS



October 2005



November 2025





# PROJECT

- ▶ Raise the current weir from 0.5 feet NAVD to approximately 2.5 or 3.0 feet NAVD
- ▶ Replace the 3 existing first-generation baffle boxes with second generation baffle boxes
- ▶ Explore dredging the STA and turning it into a wet detention pond instead of a shallow marsh
- ▶ Explore dredging the two (2) dry detention ponds and turning them into wet detention ponds
- ▶ Permit and design the system to accommodate the increase in impervious area from the CRA Street Plan



MARTIN COUNTY  
PUBLICWORKS  
@WORK

- ✓ Received \$400,000 Water Quality Grant for Baffle Boxes
- ✓ Received \$180,000 Resilient



# INITIAL ANALYSIS

10-Year, 24-hour storm event (7 inches)

High Tide 2.56 feet NAVD

Present Day



MARTIN COUNTY  
PUBLICWORKS  
@WORK





# INITIAL ANALYSIS

10-Year, 24-hour storm event (7.63 inches)

High Tide 2.92 feet NAVD

Year 2040



MARTIN COUNTY  
PUBLICWORKS  
@WORK



# INITIAL ANALYSIS

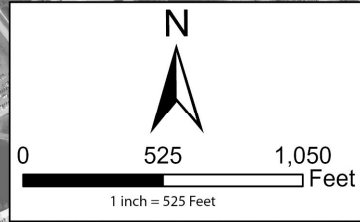
10-Year, 24-hour storm event (7.84 inches)

High Tide 3.48 feet NAVD

Year 2070



MARTIN COUNTY  
PUBLICWORKS  
@WORK



**Legend**

- Model Boundary
- 10-Year/24-Hour Modeled Inundation Extents
- Existing Conditions
- 2070







# ULTIMATE BUILD OUT ANALYSIS

10-Year, 24-hour storm event (7.84 inches)

High Tide 3.48 feet NAVD

Year 2070



MARTIN COUNTY  
PUBLICWORKS  
@WORK

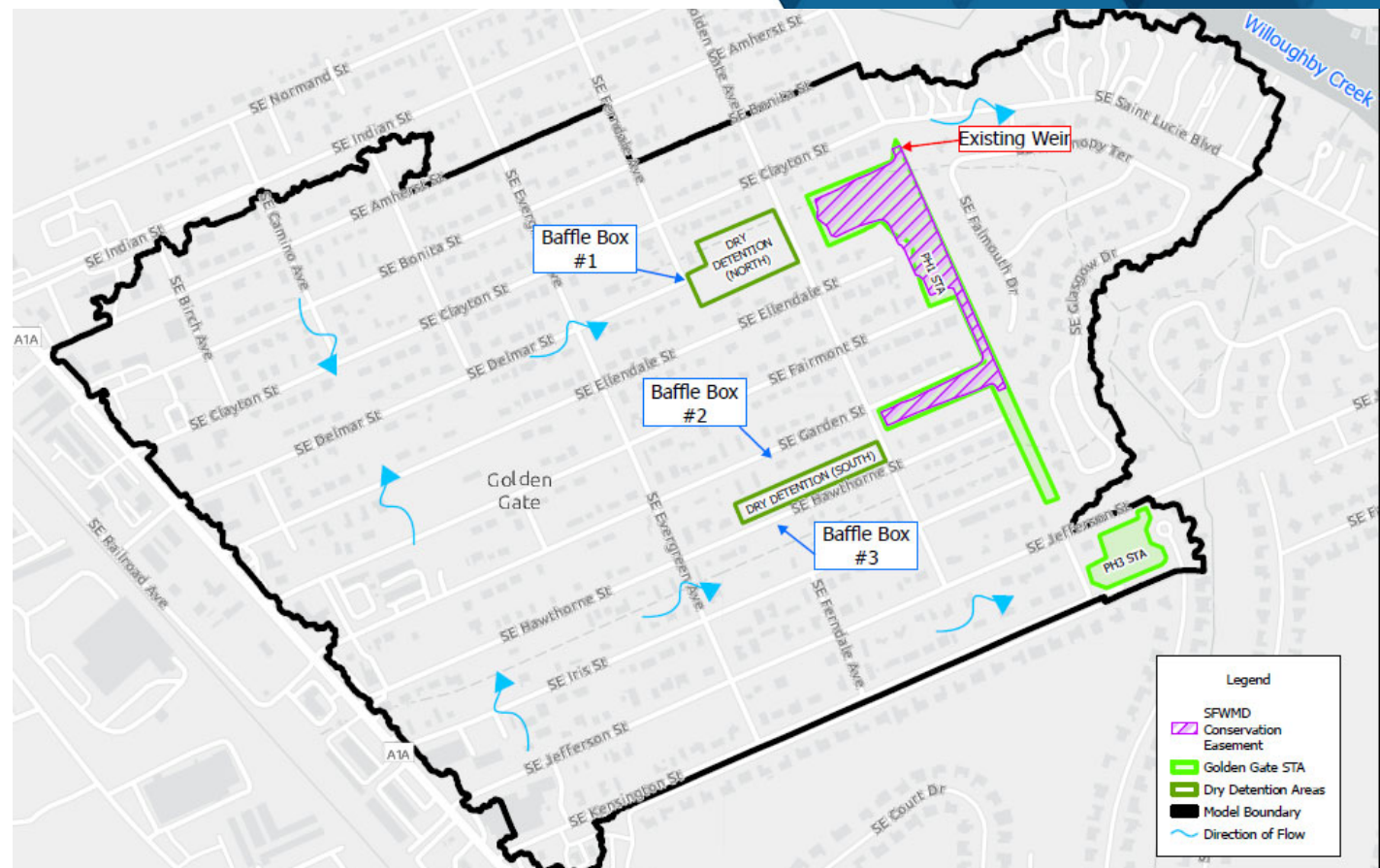


# NEXT STEP

- Meeting with SFWMD to discuss issues
- Conduct the proposed condition analysis
- Submit a SFWMD permit
- Construct the project



MARTIN COUNTY  
PUBLICWORKS  
@WORK

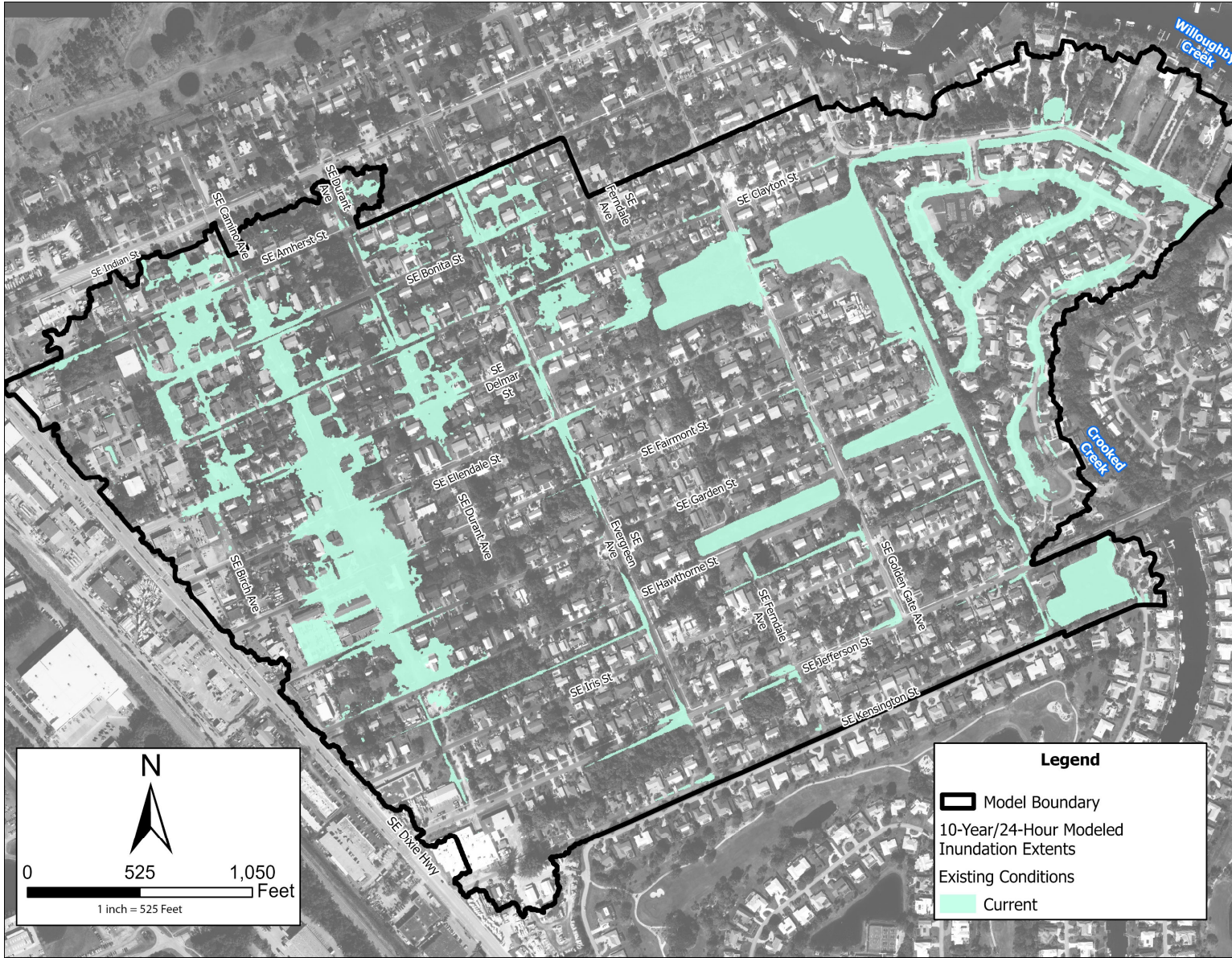




# DISCUSSION, QUESTIONS, AND FEEDBACK



MARTIN COUNTY  
PUBLICWORKS  
@WORK



Willoughby Creek

Crooked Creek