

6/25

# GOLDEN GATECRA



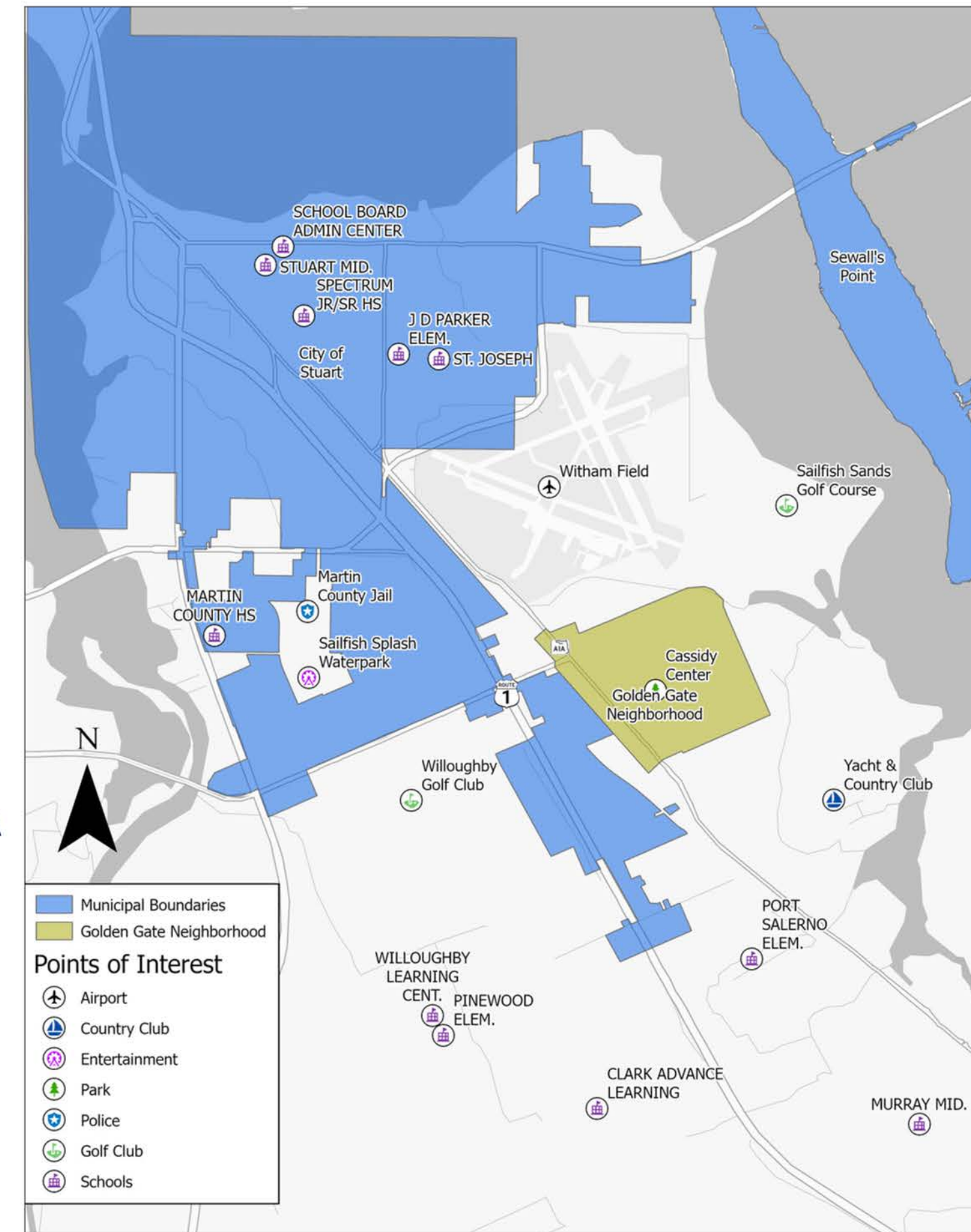
**Martin County, FL**



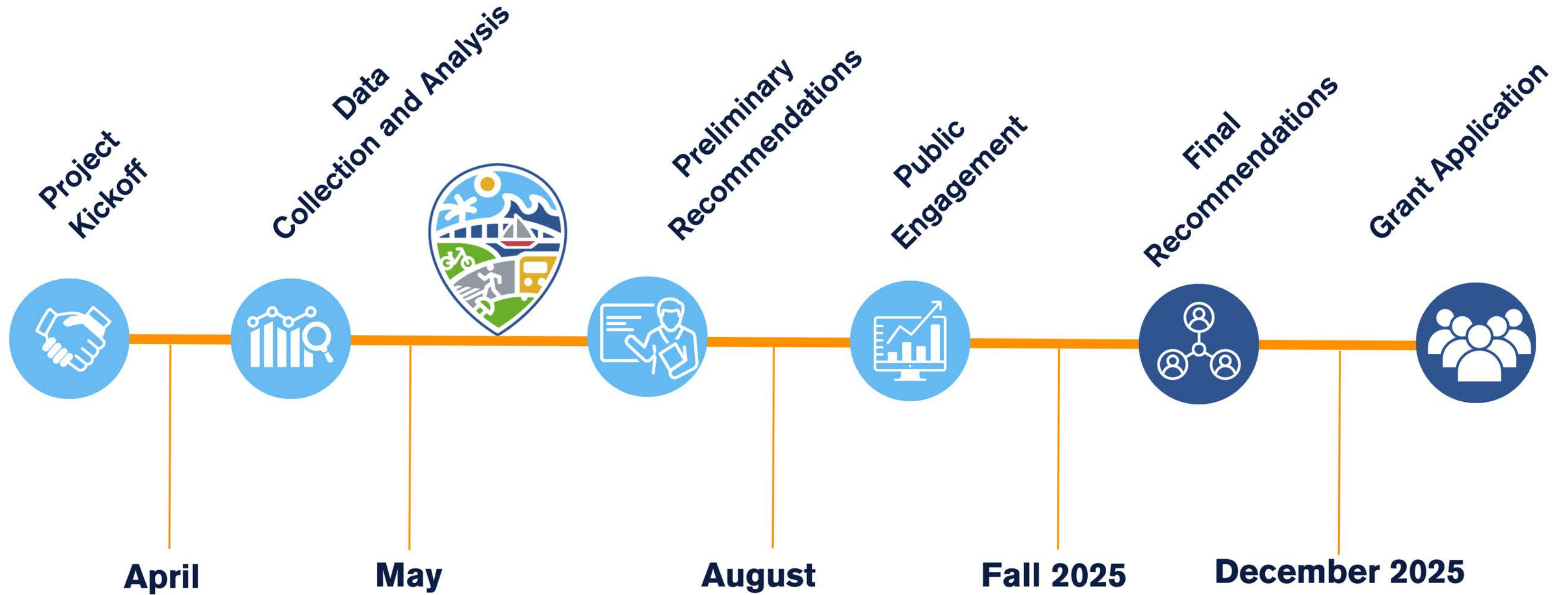
DD=C

# Project Location

- Golden Gate CRA is located in Martin County, Florida
- Total area: Approximately 380 acres
- Boundaries:
  - West: Highway A1A
  - East: Tributary of the St. Lucie River
  - North: Witham Field
  - South: Stuart Yacht & Country Club subdivision
- Entire neighborhood falls within Golden Gate CRA boundaries
- Includes residential streets, parks, transit stops, and community facilities

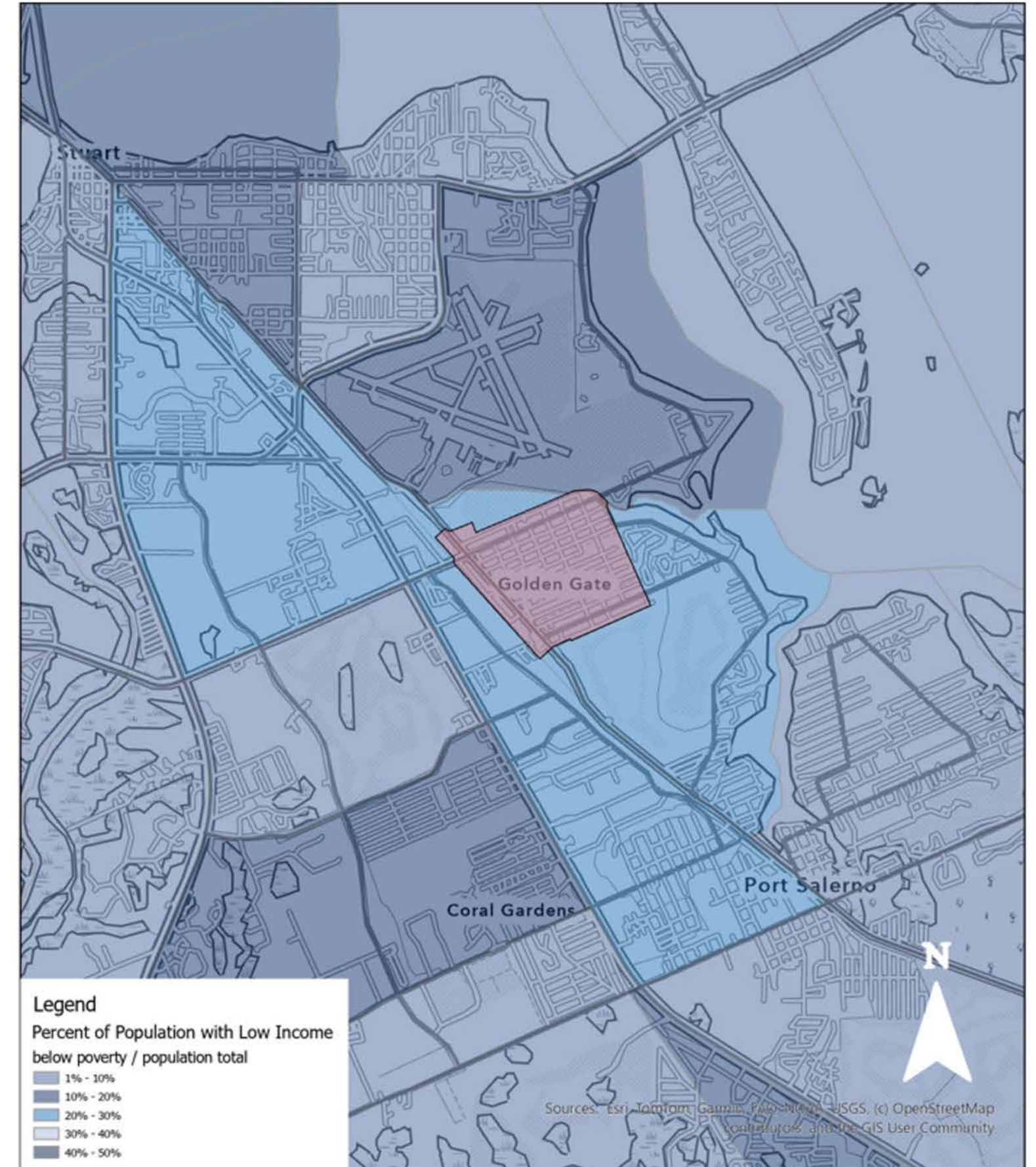


# Project Schedule



# Demographics & Land Use

- Population: ~5,070
- Poverty rate: 20.1% (higher than county average)
- Housing mix: 44.6% single-family, 44.1% duplex
- Zoning: Mainly residential with commercial along Dixie Hwy

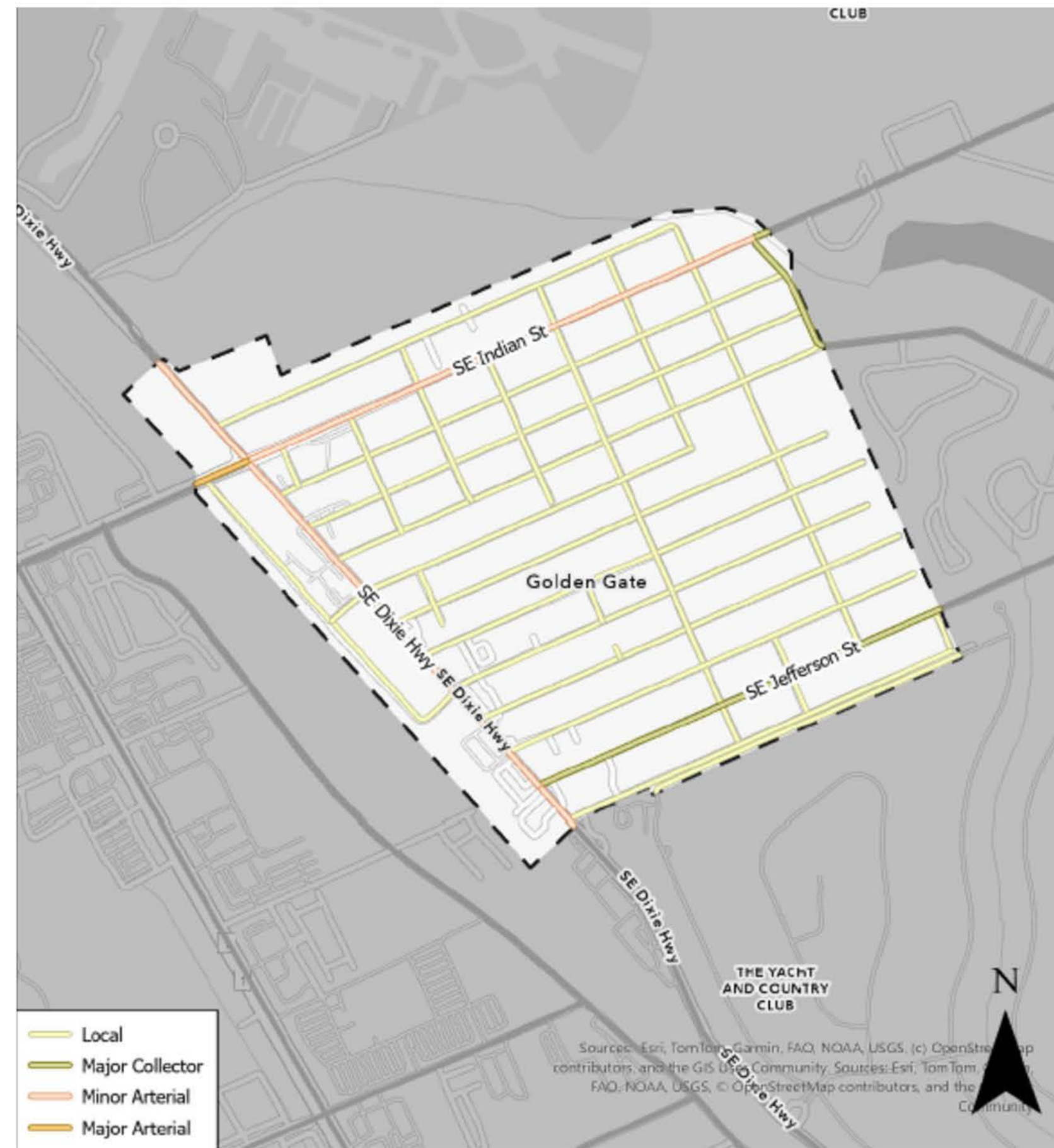


# Project Site Visit



# ↓ Roadway Infrastructure

- Arterial: Dixie Hwy (19,200 AADT)
- Collectors: Indian St (6,200 AADT), Jefferson St (900 AADT)
- Local roads: Mostly 50' ROW, limited traffic calming
- Intersection needs: Dixie & Indian St key junction



# 5 Year Crash Statistics

- 1083 total crashes (1/2015-12/2024)
- 8% off-road, 12% sideswipe, 19% rear-end
- 16 Pedestrian Crashes, 68% of Ped Crashes happened at Night
- 44% of crashes due to lane deviation, failure to yield, or tailgating
- Pedestrian signage and lighting gaps noted



DD=CC

**1083** Total Crashes

**6**   
Fatalities

**259**   
Injury (24% of Total Crashes)

 **210**  
Rear End  
(19% of Total Crashes)

 **129**  
Sideswipe  
(12% of Total Crashes)

 **85**  
Off Road  
(8% of Total Crashes)

**Top 3 Violations**

 **66**  
DUI  
(9%)

 **95**  
Distracted Driving  
(9%)

 **288**  
Failure to Keep Lane  
(26%)

 **16**  
Pedestrian Crashes

- 1 - Fatality
- 68% of Ped Crashes happened at Night



**75%** of crashes happen during the daytime, however **50%** of all Fatal Crashes occurred at night

# Multimodal Access

- 36,610 ft of sidewalks, mostly disconnected
- Sidewalks on both sides: Dixie Hwy, parts of Evergreen
- No dedicated bike lanes or shared-use markings
- El Camino Trail under development



DD=EC

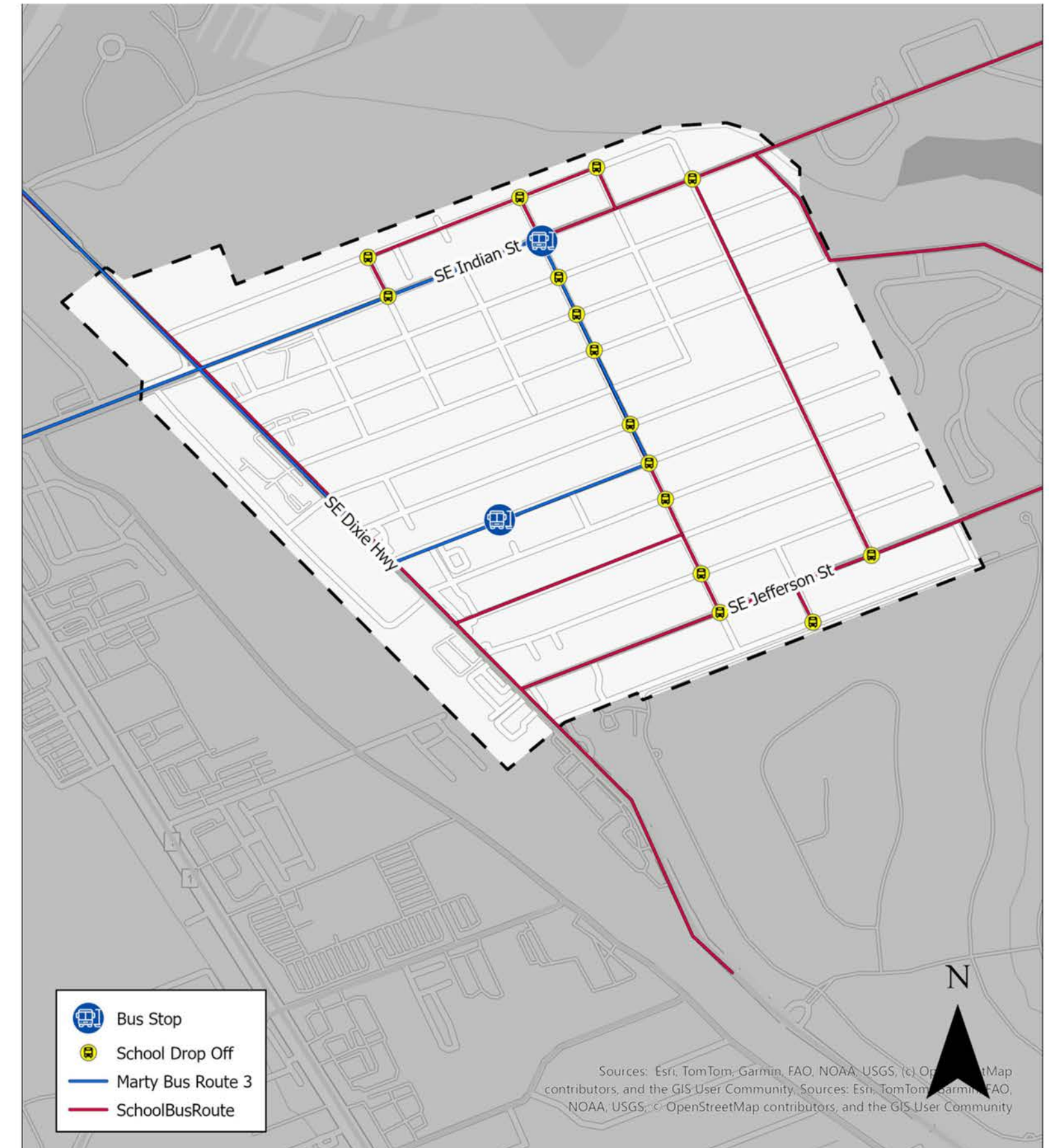


# Transit Conditions

- MARTY Route 3: 2 stops (Evergreen & Cassidy Center)
- Shelters and seating only located at Cassidy Center Stop
- Poor pedestrian access due to sidewalk gaps
- Riders must walk in roadways to reach transit



DDEC



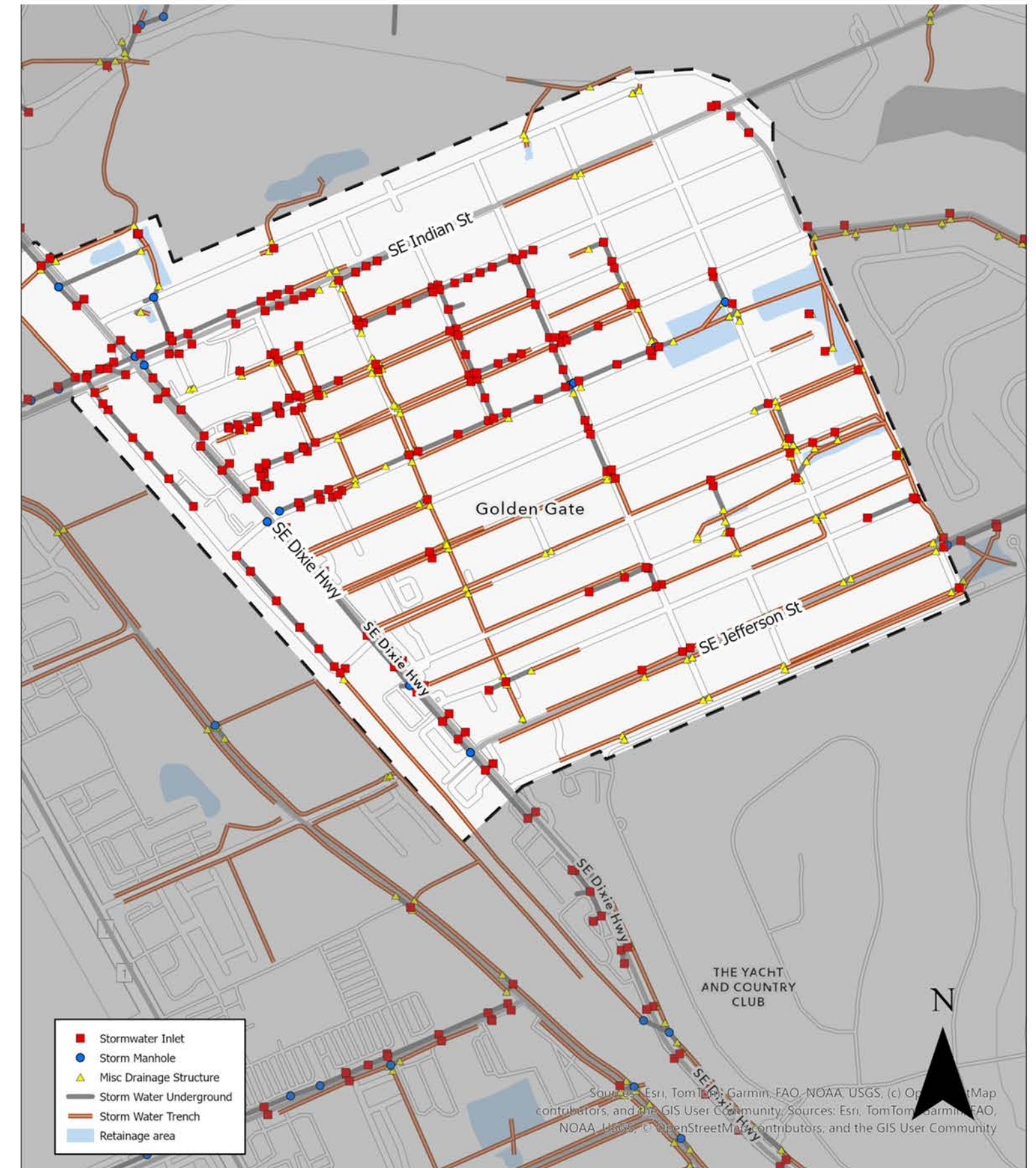
# ↙ Parking Demand

- High on-street parking usage observed near residential clusters
- Driveway and off-street parking limited for duplex and multi-unit housing
- Informal parking often occurs in unpaved yards or swale areas
- No marked or regulated parking zones, leading to inconsistent use

**DD=CC**

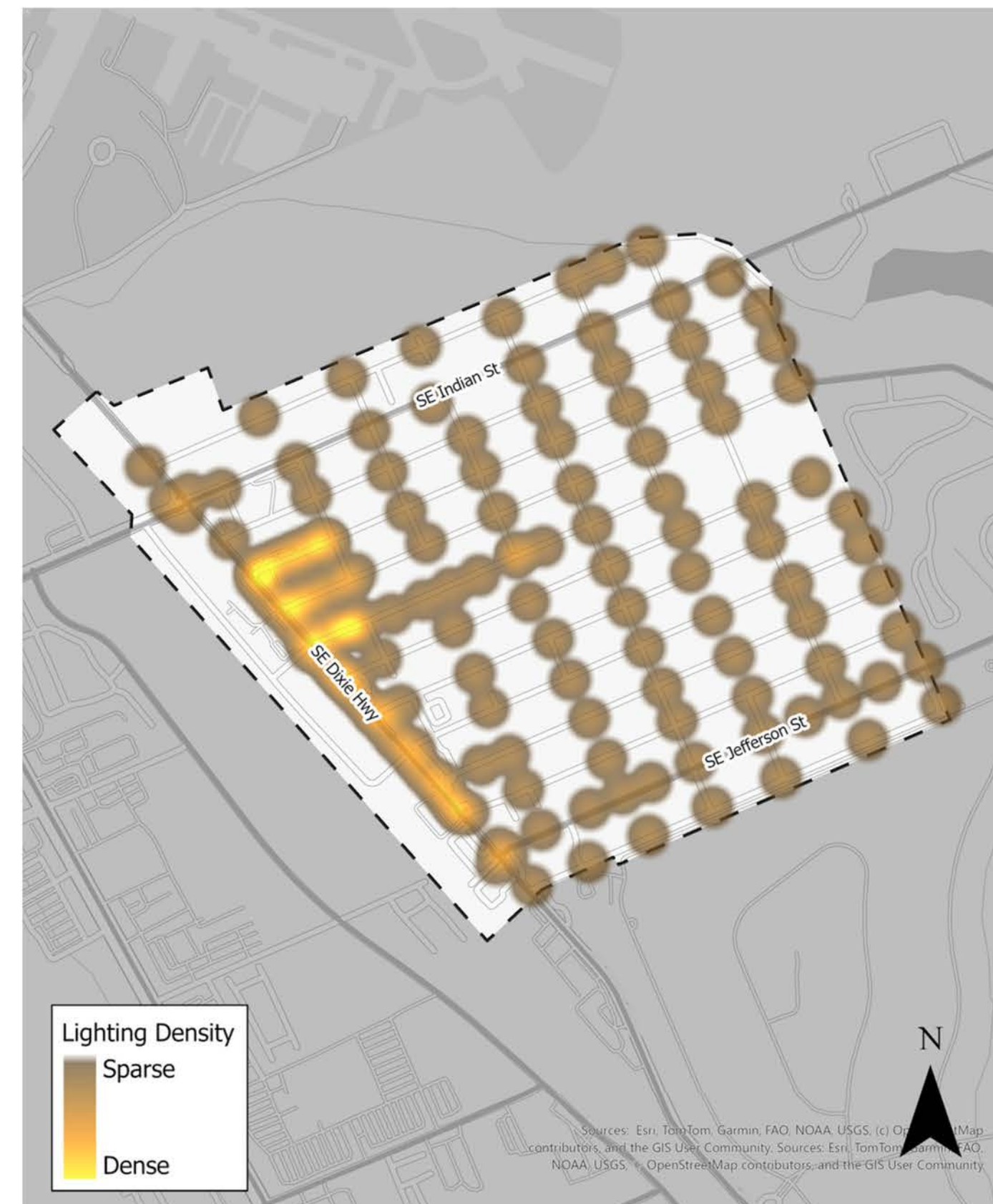
- 

DD=C



# Public Spaces & Lighting

- Cassidy Center: park, playground, sports courts, transit access
- Lighting gaps: only Evergreen, Jefferson, and Dixie well lit
- Tree canopy: 18.15% (below USDA 30% goal)



# Existing vs. Planned Improvements

- CRA Plan covers sidewalk buildout and some lighting upgrades
- Major gaps: drainage upgrades, full lighting, transit stop amenities
- Existing conditions often conflict with new sidewalk placement

