



MARTIN COUNTY  
*Community Redevelopment Agency*

**GOLDEN GATE**

# **LANDSCAPE VISION PLAN UPDATE**

Golden Gate NAC –  
February 2, 2026





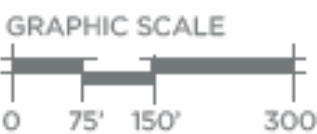
MARTIN COUNTY  
*Community Redevelopment Agency*

# NEIGHBORHOOD MAP



**Key**

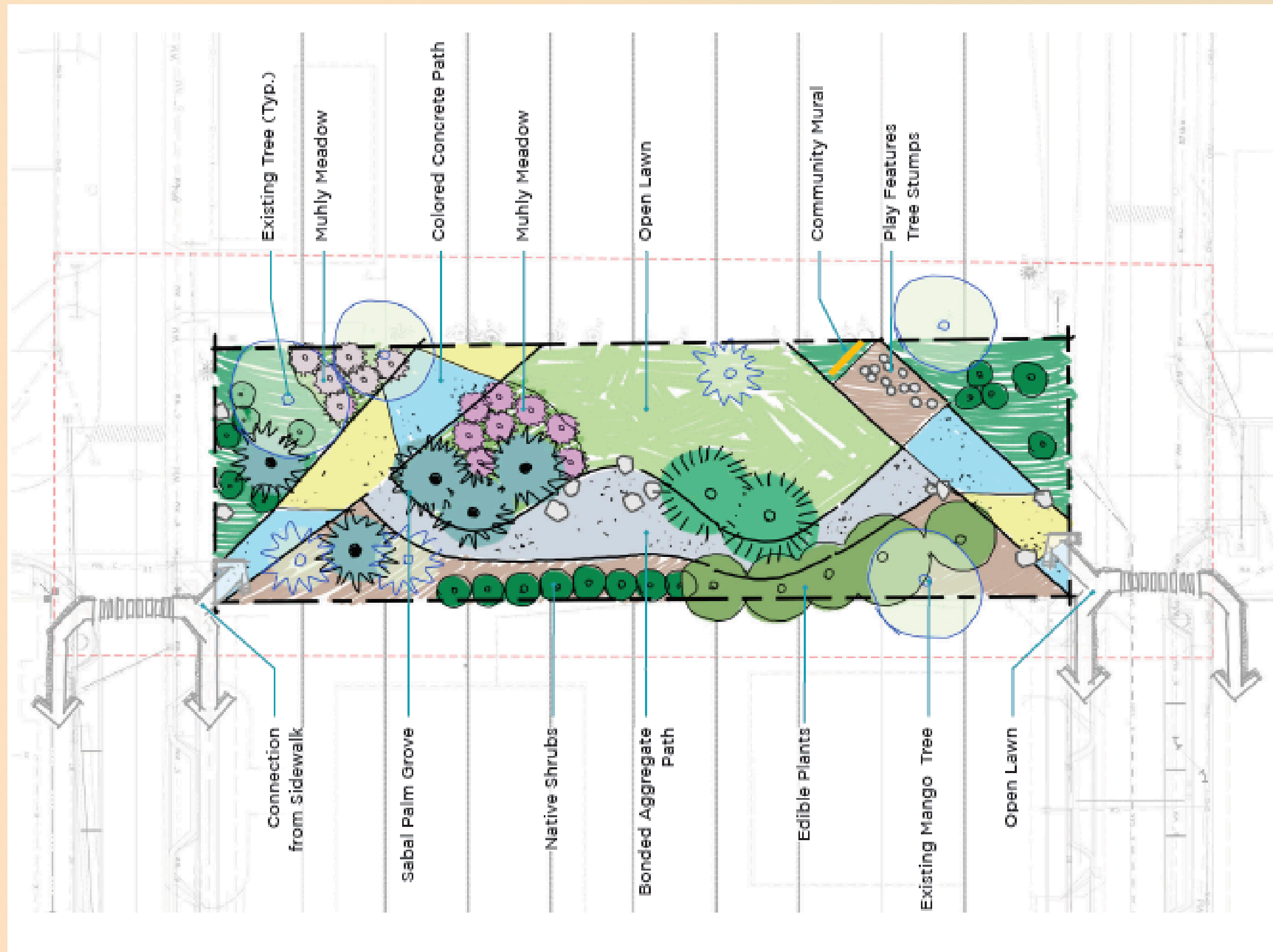
- Project Site
- El Camino Site
- Key Community Points of Interest
- Crosswalk





MARTIN COUNTY  
*Community Redevelopment Agency*

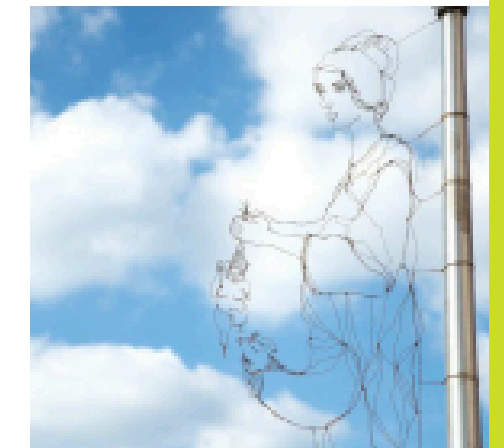
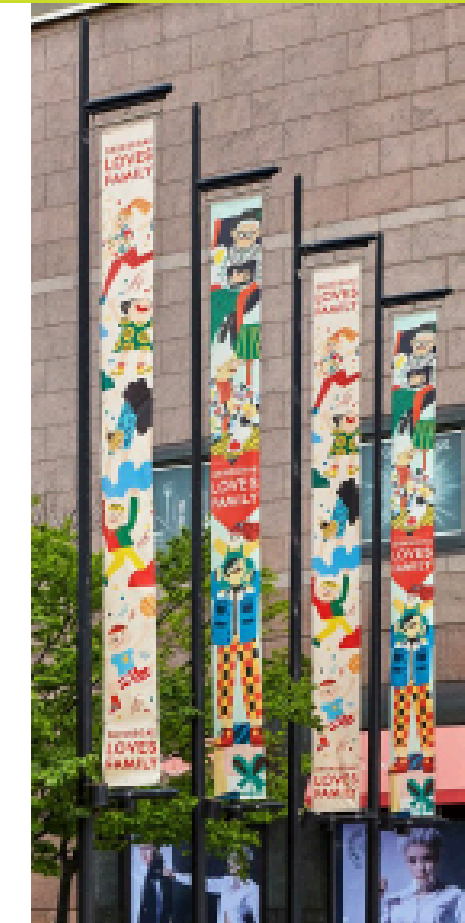
# POCKET PARK POSSIBILITIES





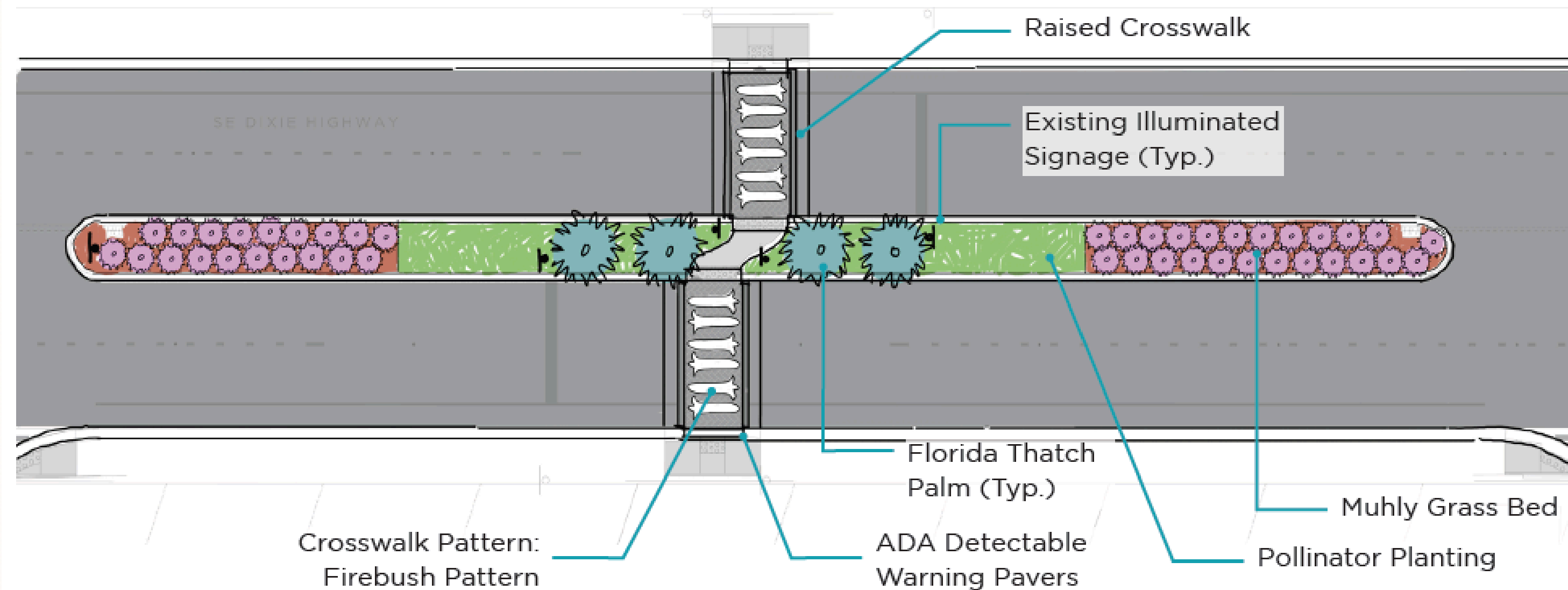
# I SEE ART AS .....

MARTIN COUNTY  
*Community Redevelopment Agency*



# MORE THAN A MEDIAN CONCEPT SKETCHES

## Typical Mid-Median Crosswalk

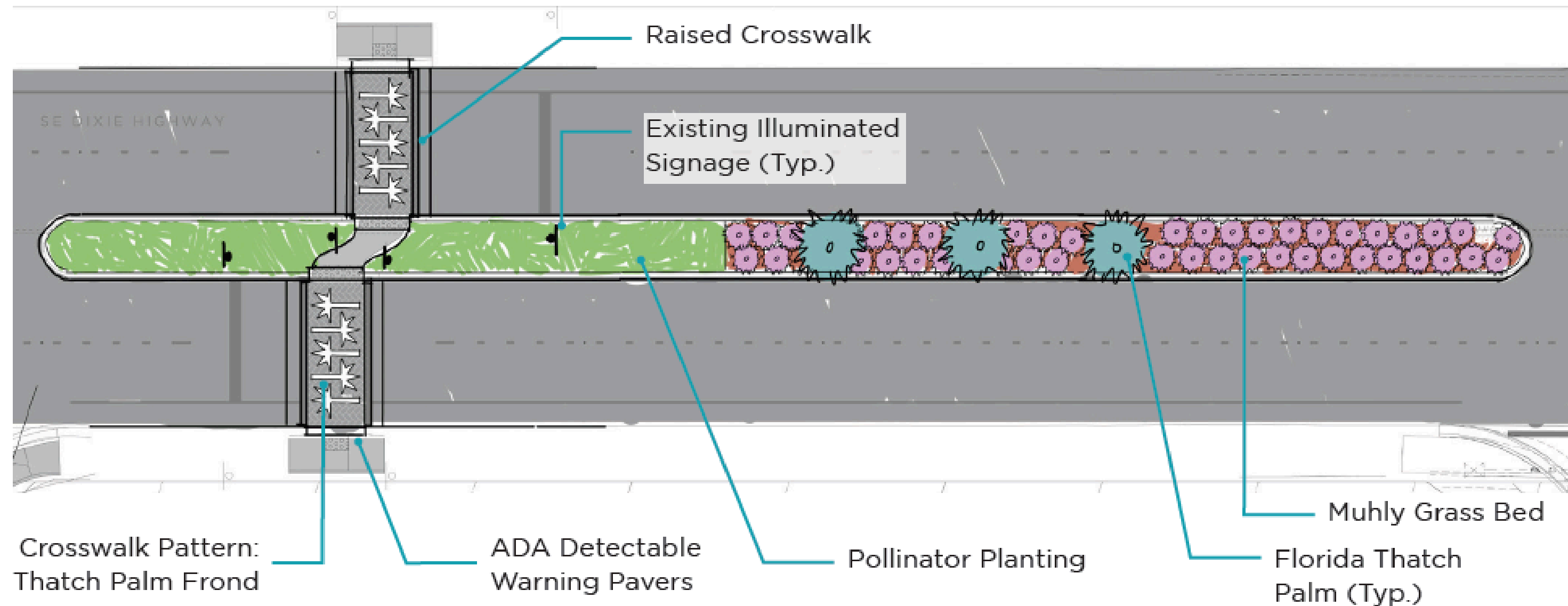




# MORE THAN A MEDIAN CONCEPT SKETCHES

MARTIN COUNTY  
*Community Redevelopment Agency*

## Typical End-of-Median Crosswalk





MARTIN COUNTY  
*Community Redevelopment Agency*

# SUSTAINABILITY FEATURES



## NATIVE PLANTS

Native plants have evolved with other local species such as plants, fungi, insects, pollinators and even humans. Not only are native plants well-adapted to climate and soil conditions, they attract pollinators, provide shelter and food for wildlife, and connect humans to their local ecosystems.



## WILDLIFE & BIODIVERSITY

To attract wildlife, gardens need to be designed for habitat. By providing four basic elements: food, shelter, water and space, any landscape can transform into a hub for biodiversity. This variety of life gives ecosystems their resiliency.



## WATER QUALITY

Excess fertilizers and pesticides pollute local waterways, watersheds, and aquifers. This in turn negatively impacts surrounding wildlife and aquatic ecosystems. We design with native vegetation and reduce lawn area to filter pollutants and protect nearby streams, wetlands, rivers, and oceans.



## BALANCE AND BEAUTY

Texture, form, structure, function and rhythm are present in our native landscapes. We approach design as an extension of the indoors, a space to relax and enjoy. We work with nature to maintain a balance and rhythm in the landscape.



## FORAGING

Trees and shrubs with edible elements such as fruits or leaves to stew for tea in the landscape provides opportunities for education on natural and food systems. Communities with edible gardens have enhanced well-being through improved access to fresh food and stronger social connections.



## REDUCES URBAN HEAT ISLAND EFFECT

By providing shade through trees and palms, the microclimate along the vehicular corridors is made cooler and more comfortable for pedestrians. These plants also help reduce the urban heat island effect by absorbing heat that would typically be reflected by the road, cars, and buildings.





# QUESTIONS?

**Joy Puerta**  
**Office of Community Development**

☎ 772-288-5908

✉ [jpuerta@martin.fl.us](mailto:jpuerta@martin.fl.us)