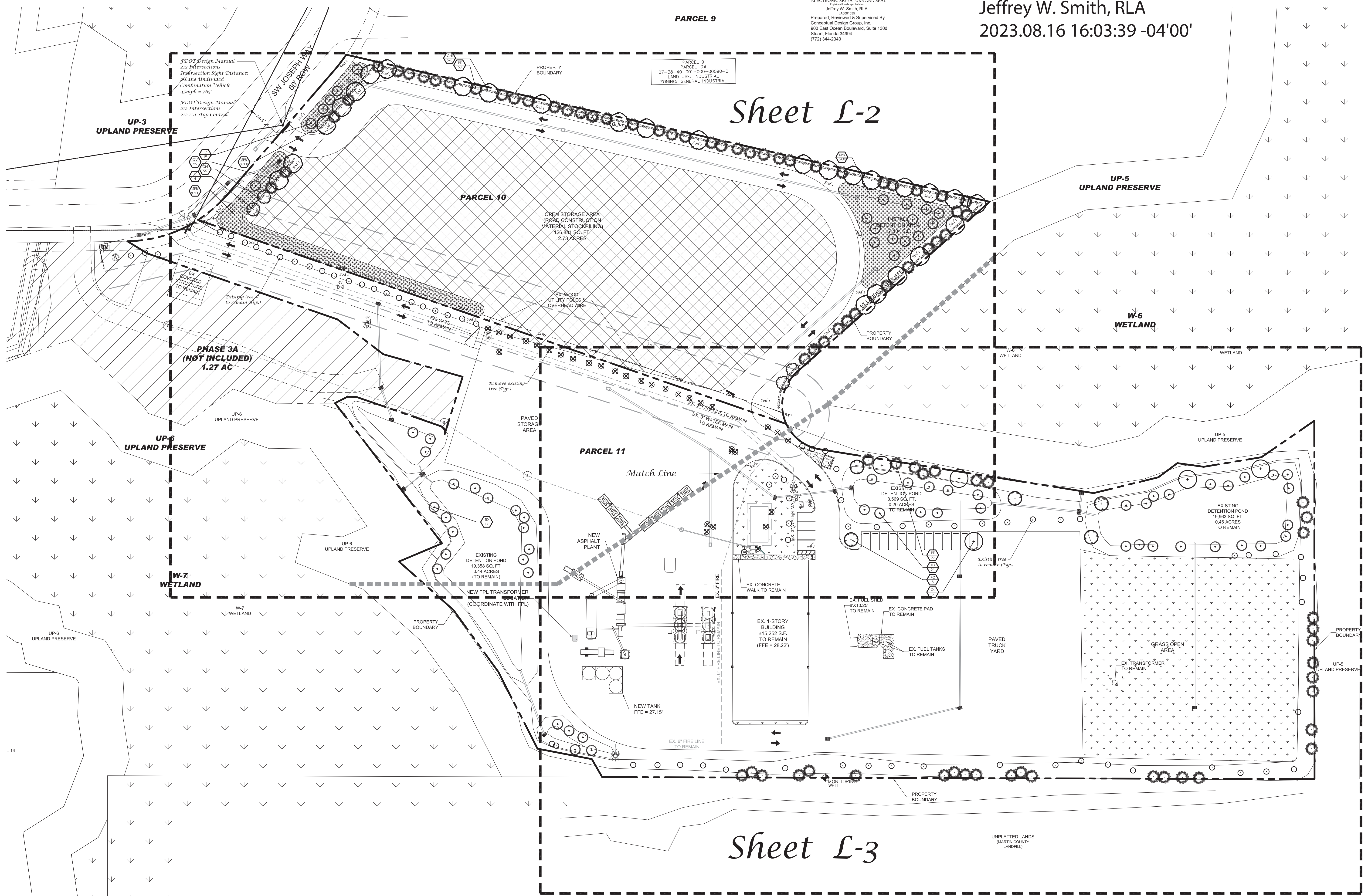


ELECTRONIC SIGNATURE AND SEAL
 Jeffrey W. Smith, RLA
 Prepared, Reviewed & Supervised By:
 Conceptual Design Group, Inc.
 900 East Ocean Boulevard, Suite 130d
 Stuart, Florida 34994
 (772) 344-2340

Jeffrey W. Smith, RLA
 2023.08.16 16:03:39 -04'00'

Conceptual Design Group, Inc.
 Landscape Architecture - Site Planning
 900 East Ocean Boulevard, Suite 130d
 Stuart, Florida 34994
 (772) 344-2340
 LC: 26000198

CRW Contracting, Inc.
 Martin County, Florida



Sheet L-3

Dry Retention Areas

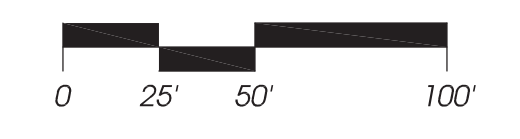
INSTALL PER MANUFACTURER'S SPECIFICATIONS "COIR MAT 900" COCONUT MAT ("OR EQUAL") TO STABILIZE THE SLOPES AND BOTTOM OF THE DRY RETENTION AREA TO PREVENT EROSION. BOTTOM OF DRY RETENTION AREA AND ALL SLOPES SHALL BE PLANTED WITH SPARTINA BAKERI 12" ON CENTER. MAT SHALL BE ON THE BOTTOM AND SIDE SLOPES 3' PAST THE TOP OF BANK (UNDER THE ADJACENT PLANTINGS).

General Notes

- No plant substitutions can be made without Martin County approval.
- All required landscape improvements must be inspected and approved by Martin County prior to the issuance of a Certificate of Occupancy.
- Any existing landscaping, sod, or irrigation damaged or destroyed during the construction shall be replaced prior to the final inspection.
- All planting areas and St. Augustine sod (if applicable) to be irrigated to provide 100% coverage and provide adequate irrigation of landscape areas for the first full growing season and continue thereafter only as necessary to maintain required vegetation in good and healthy condition. Shop drawings to be submitted by the irrigation contractor for approval prior to installation.
- Planting adjacent to fire hydrants is to have a minimum clear radius of 7.5' as required by the NFPA Uniform Fire Code Florida Edition 18.3.4.1 Hydrants. All fire hydrants and fire check valves shall have a minimum of 7.5' from the front and sides with 4' from the rear to all landscape material per the Florida Fire Prevention Code.



North
 Scale: 1" = 50'

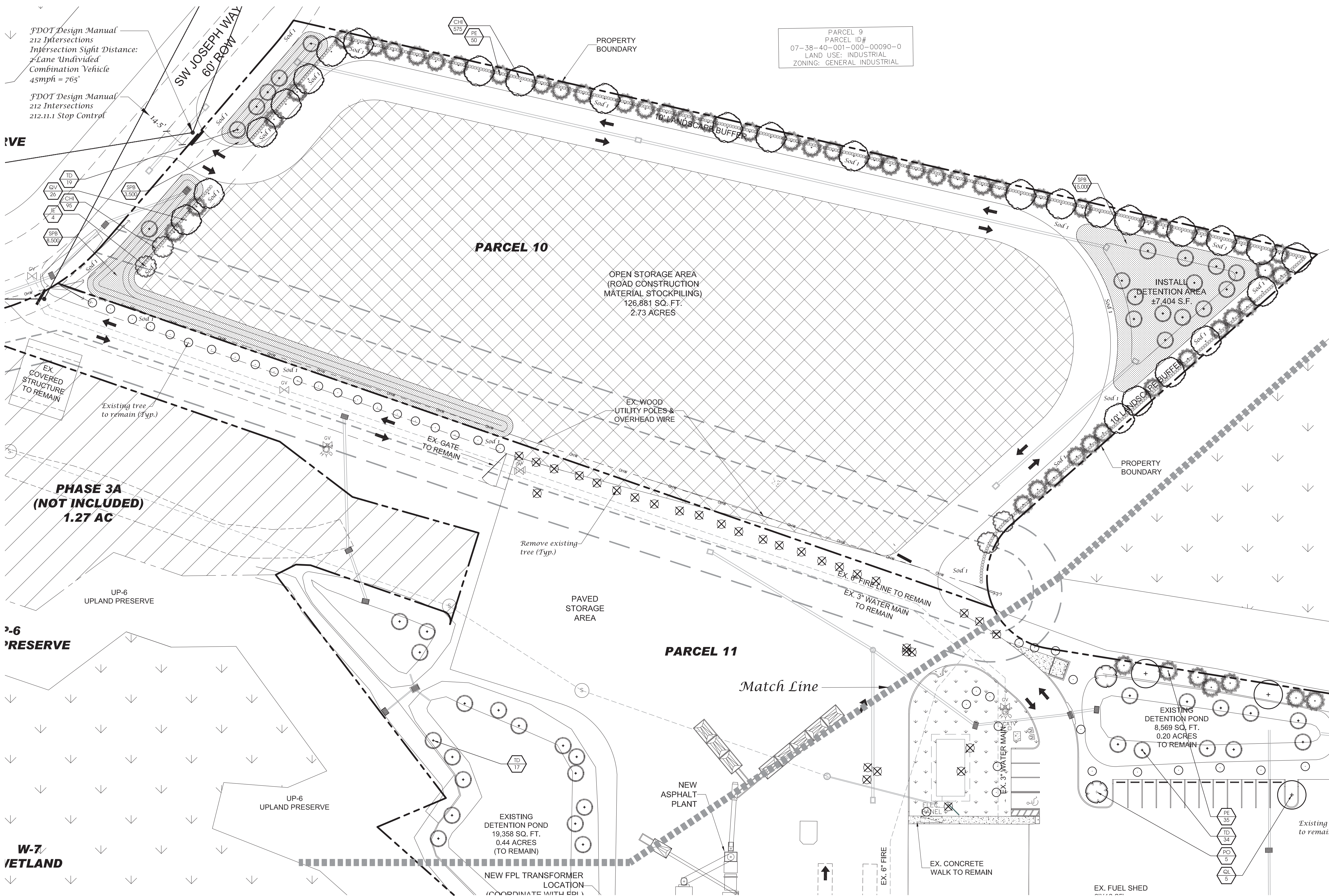


Landscape Plan

Job No. 23-0201
 Drawn By JWS
 Submittal Dates 3-16-2023
 8-16-2023

Revision Dates
 Comments #1 8-16-2023

These drawings are the property of the landscape architect and are not to be used for other projects except by written permission from the landscape architect. Report any discrepancies immediately to the landscape architect.



FDOT Design Manual
212 Intersections
Intersection Sight Distance:
2-Lane Undivided
Combination Vehicle
45mph = 765'

FDOT Design Manual
212 Intersections
212.11.1 Stop Control

PARCEL 9
PARCEL ID#
07-38-40-001-00090-0
LAND USE: INDUSTRIAL
ZONING: GENERAL INDUSTRIAL

PARCEL 10

OPEN STORAGE AREA
(ROAD CONSTRUCTION
MATERIAL STOCKPILING)
126,881 SQ. FT.
2.73 ACRES

INSTALL
DETENTION AREA
±7,404 S.F.

PARCEL 11

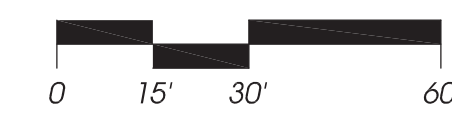
EXISTING
DETENTION POND
19,358 SQ. FT.
0.44 ACRES
(TO REMAIN)

EXISTING
DETENTION POND
8,569 SQ. FT.
0.20 ACRES
TO REMAIN

Landscape Plan



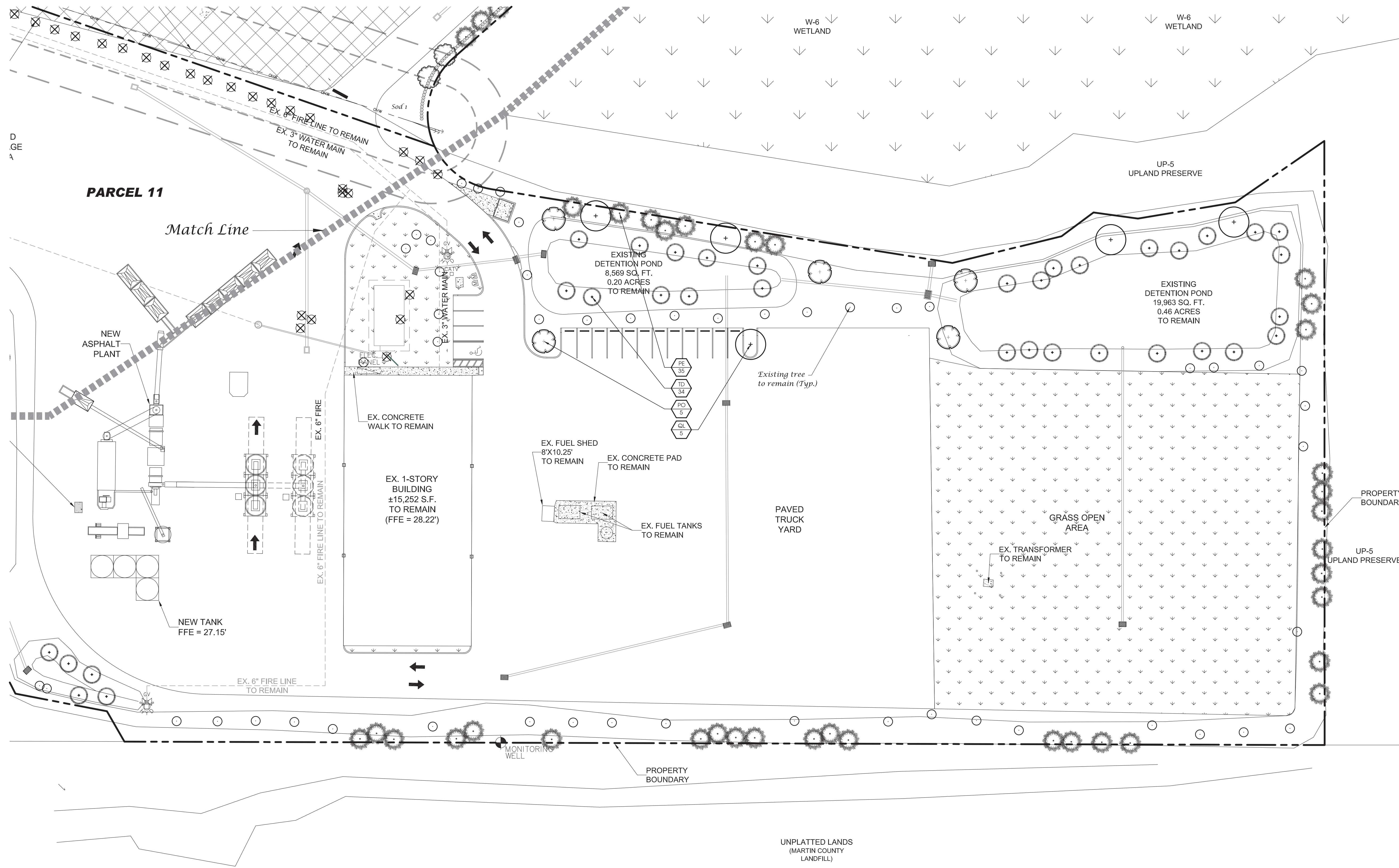
North
Scale: 1" = 30'



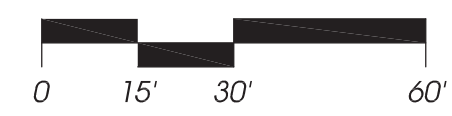
Job No. 23-0201
Drawn By JWS
Submittal Dates 3-16-2023
8-16-2023

Revision Dates
Comments #1 8-16-2023

These drawings are the property of the landscape architect and are not to be used for other projects except by written permission from the landscape architect. Report any discrepancies immediately to the landscape architect.



North
Scale: 1" = 30'



Landscape Plan

Job No.	23-0201
Drawn By	JWS
Submittal Dates	3-16-2023 8-16-2023

Revision Dates	
Comments #1	8-16-2023

These drawings are the property of the landscape architect and are not to be used for other projects except by written permission from the landscape architect. Report any discrepancies immediately to the landscape architect.

