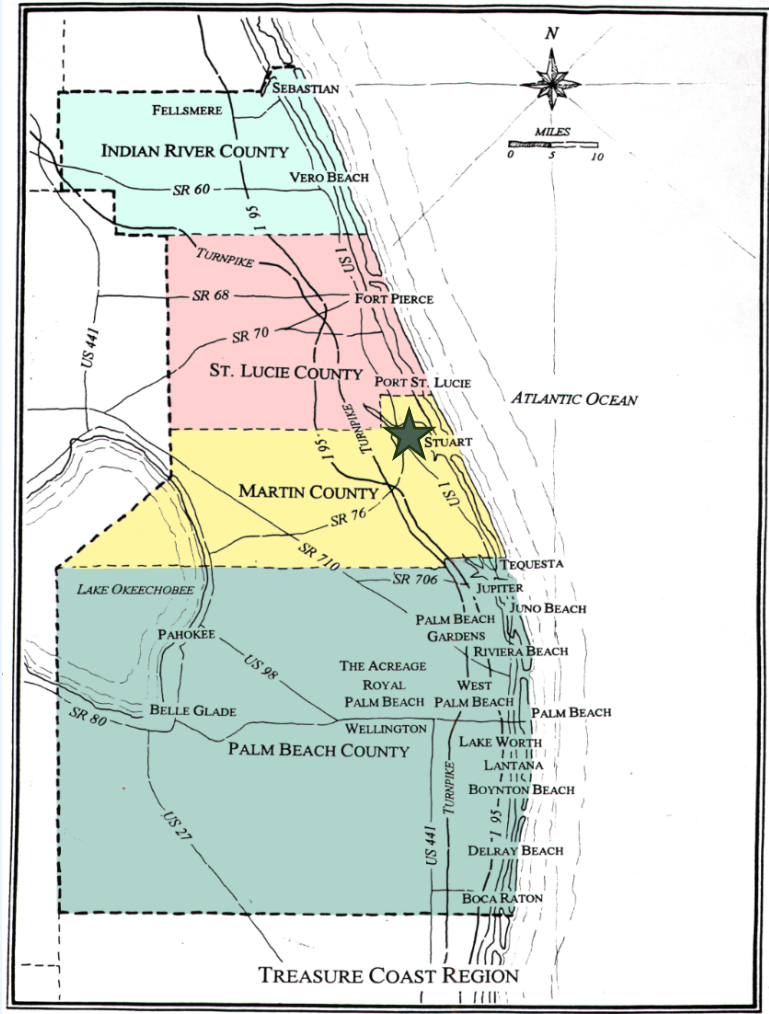




Port Salerno
Public Open Space Plan
Community Redevelopment Agency

April 9, 2026

Who Are Regional Planning Councils?



- 4 Counties - 52 Municipalities
- 2.1 million people
- 105 miles of Atlantic Coastline
- 3,589 square miles
- 2.6 million people (2045)
- 294 local elected officials
- 5 state senators
- 13 state house members
- Economic Development, Emergency Preparedness, Transportation Planning, Urban Design Studio

Public Open Space Plan

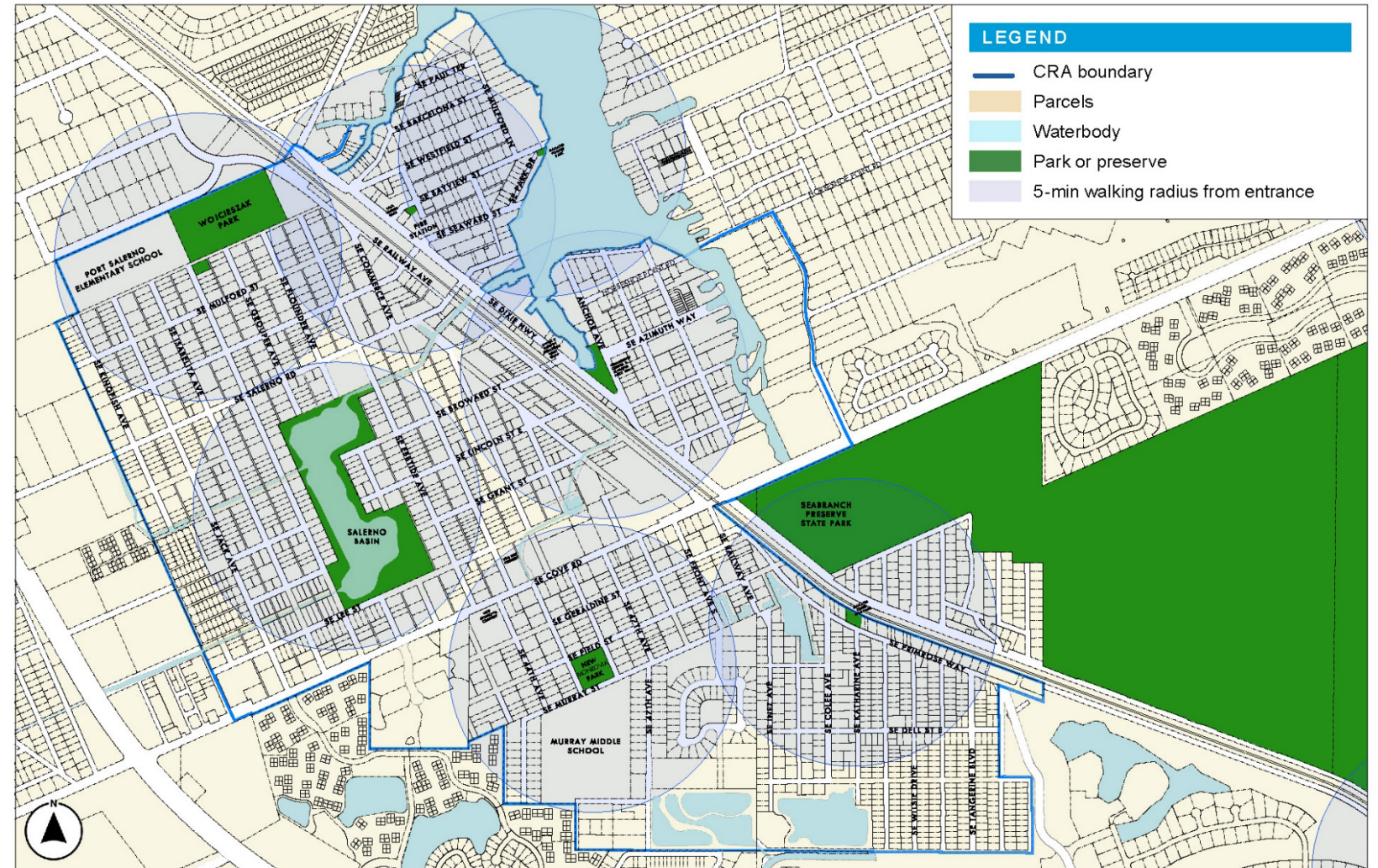
The Treasure Coast Regional Planning Council (TCRPC) has been requested by the CRA to develop a Public Open Space Plan for the Port Salerno CRA area. This plan is to be in accordance with the Objectives and Policies of the Martin County Comprehensive Growth Management Plan:

- **Objective 18.4A.** To facilitate attainment of a coordinated system of public open space and recreation areas within the CRAs.
- **Policy 18.4A.1.** An open space plan that indicates the general location of desired open space and pedestrian and cyclist connectivity through the community shall be prepared for each CRA.

Open Space Plan

EXISTING CONDITIONS

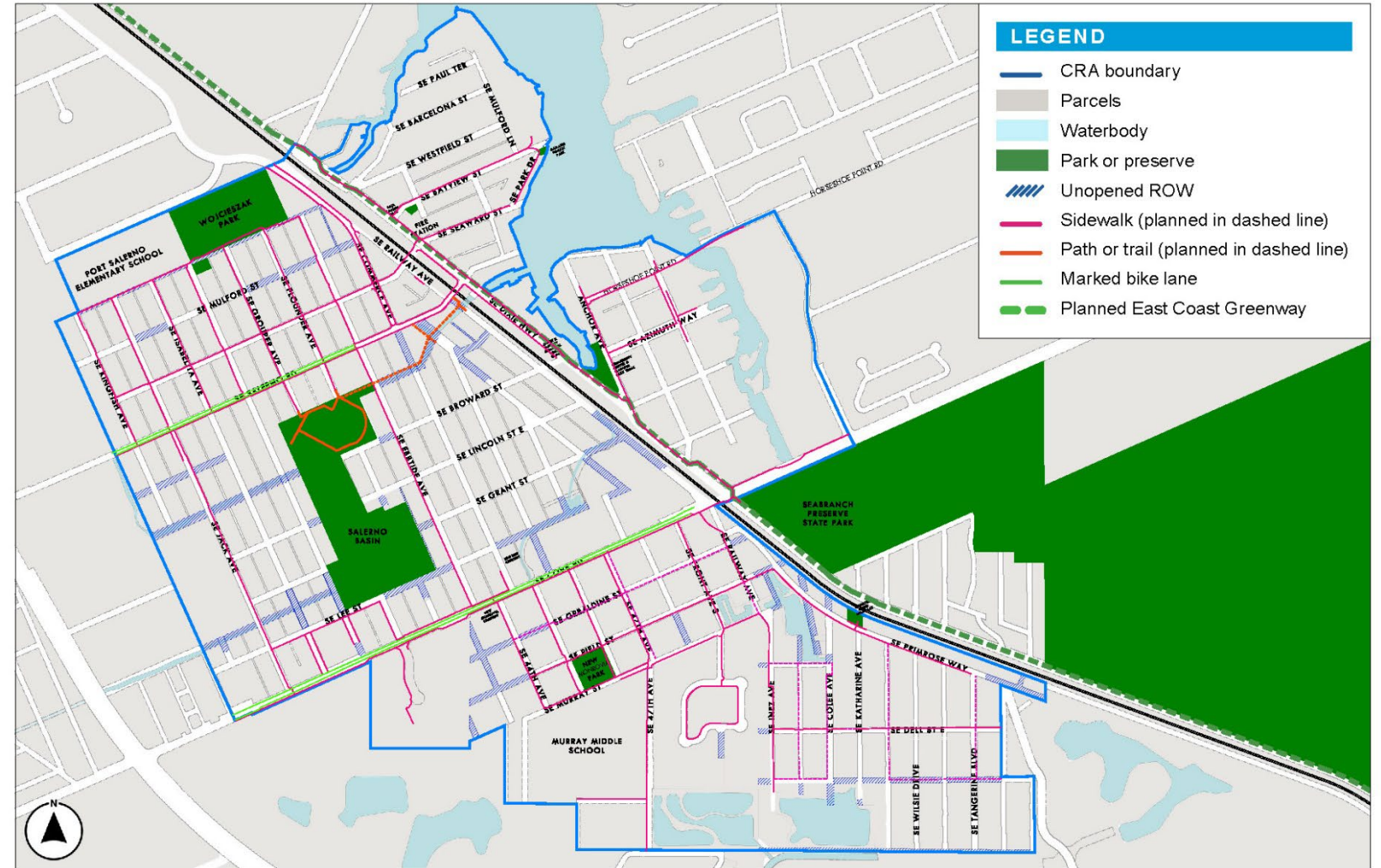
5-MIN WALKING RADIUS (1/4-MILE) CENTERED ABOUT PARKS & PRESERVES



Open Space Plan

EXISTING CONDITIONS

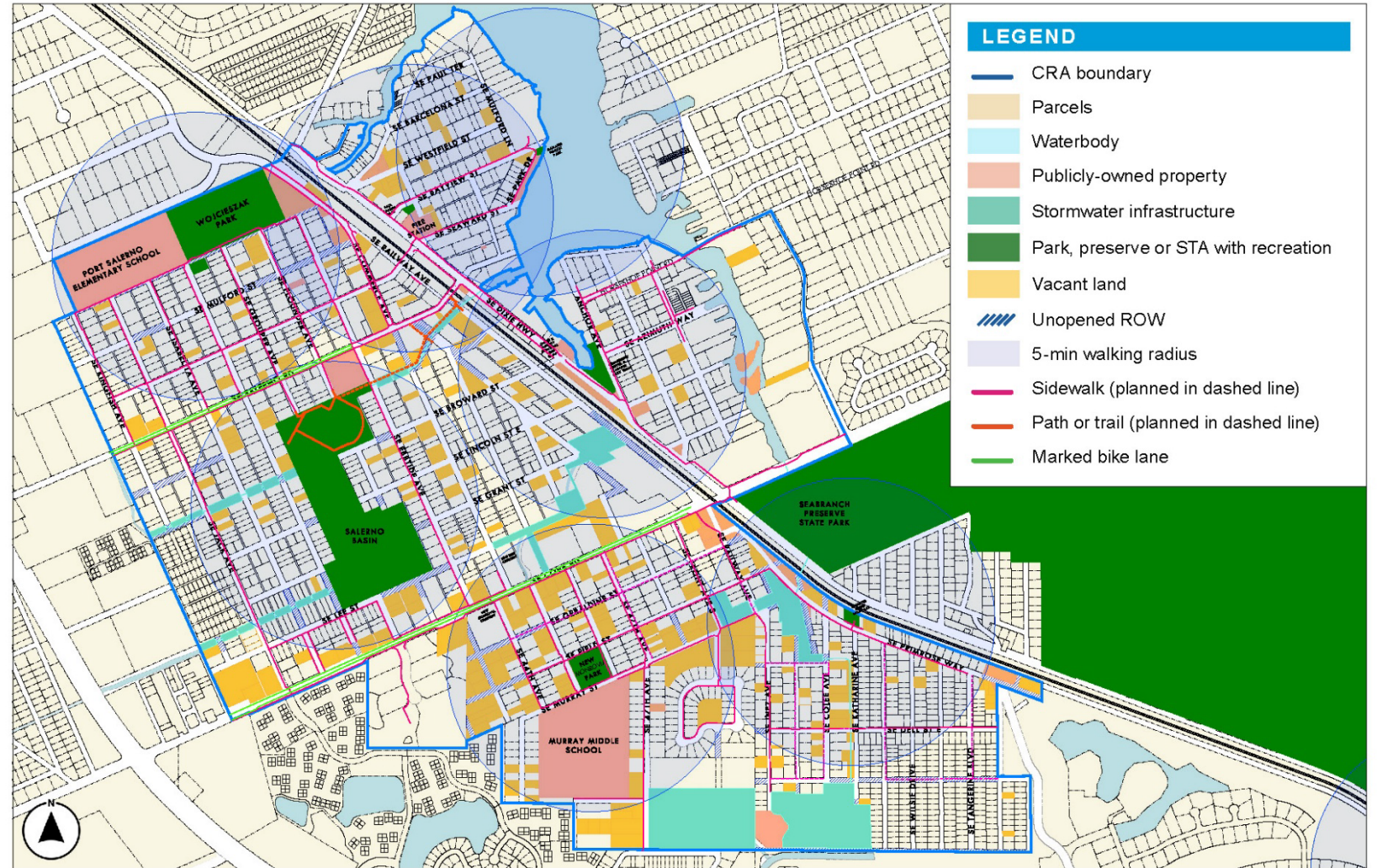
PEDESTRIAN & BIKING PATHS



Open Space Plan

EXISTING CONDITIONS

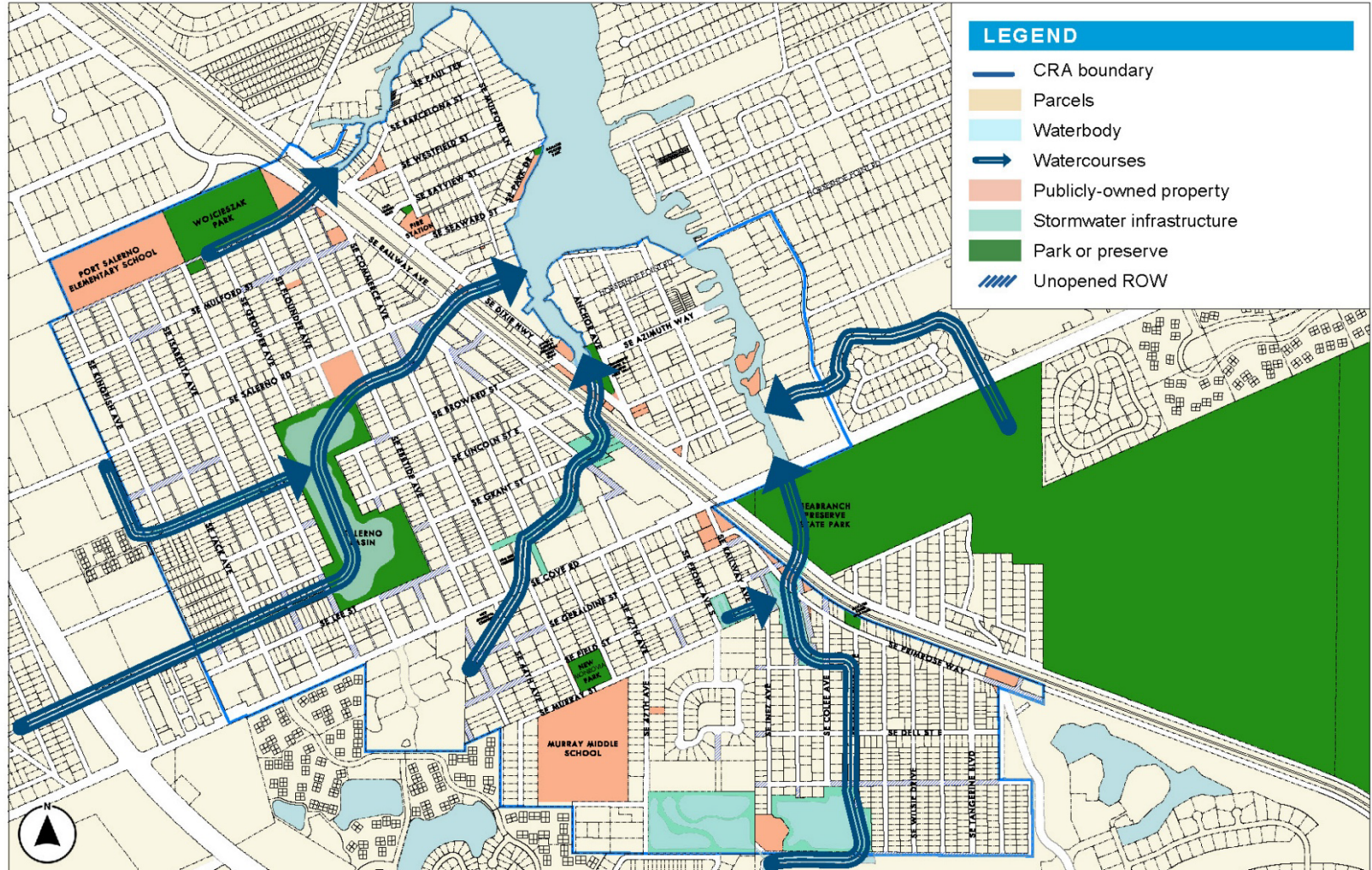
COMBINED LAYERS



Public Open Space Plan

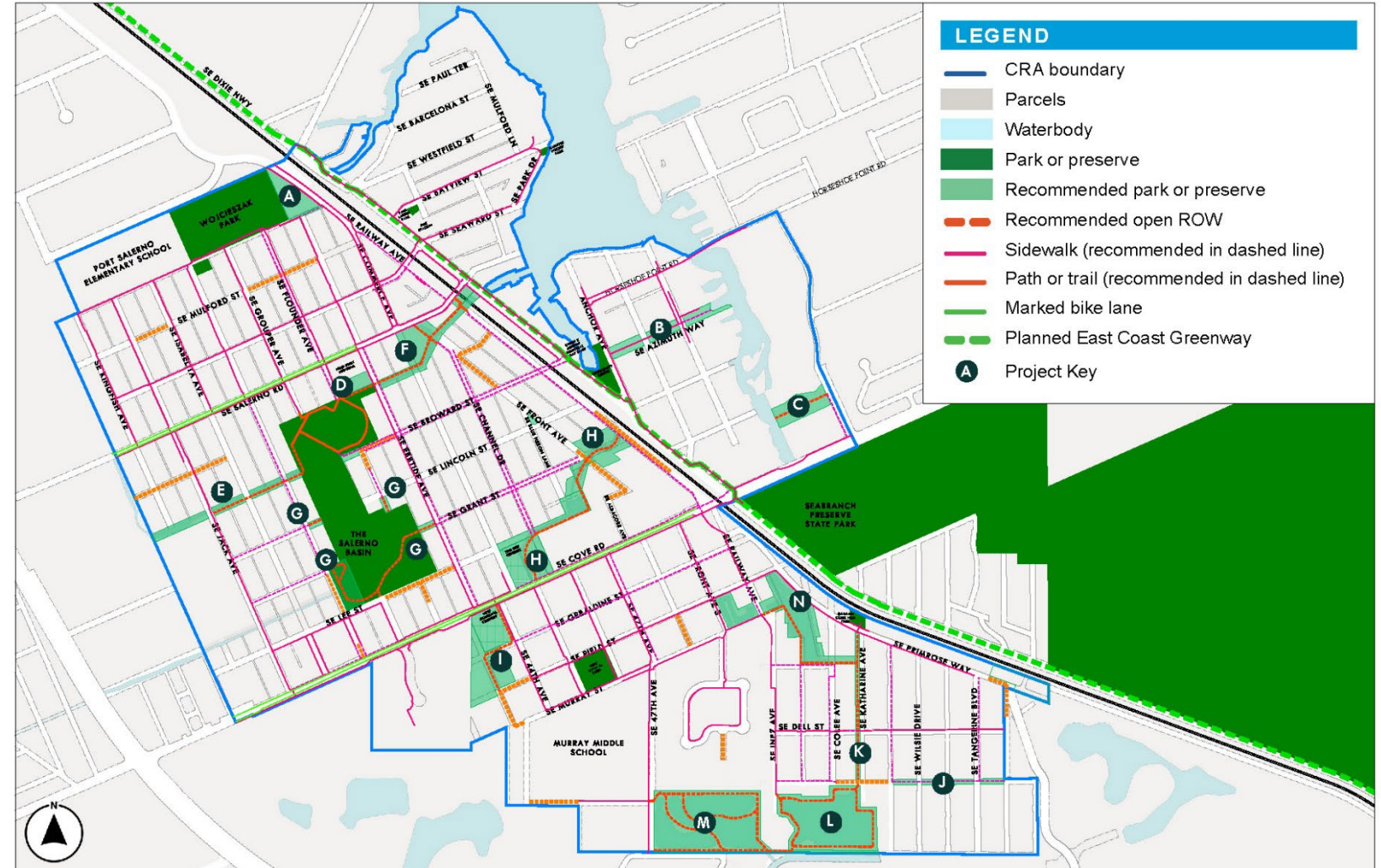
EXISTING CONDITIONS

EXISTING WATERCOURSES

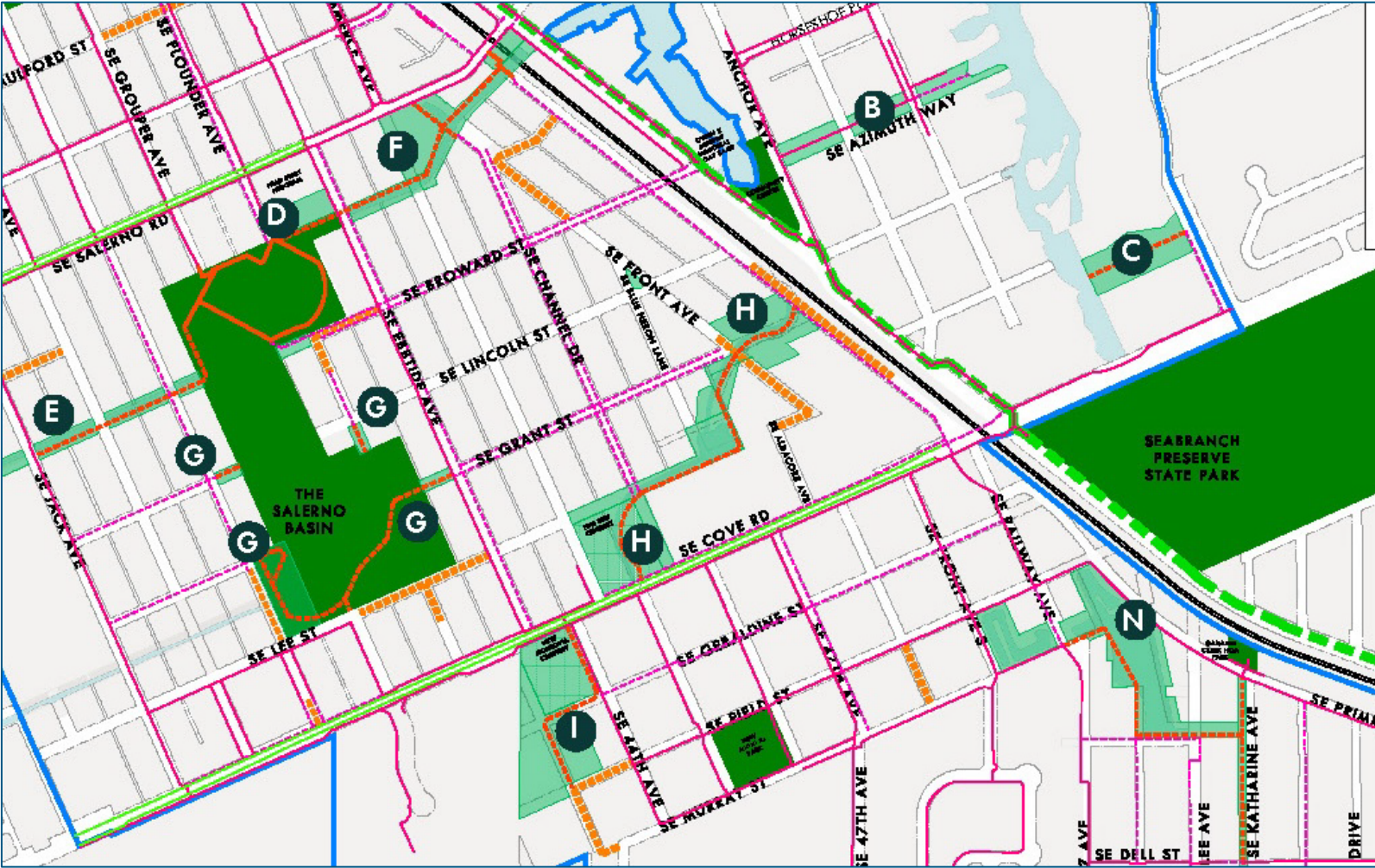


Open Space Plan

RECOMMENDED OPEN SPACES DIAGRAM



Open Space Plan



LEGEND

- CRA boundary
- Parcels
- Waterbody
- Park or preserve
- Recommended park or preserve
- Recommended open ROW
- Sidewalk (recommended in dashed line)
- Path or trail (recommended in dashed line)
- Marked bike lane
- Planned East Coast Greenway
- A Project Key

Open Space Plan

RECOMMENDED PROJECT LIST

RECOMMENDED PROJECT LIST						
Key	Rank	Project Name	Description	Stakeholders/Agency Coordination	Included in CRA Plan?*	Included in Current CIP?
D	1	Head Start Community Playground (Old School House)	This site was called out as an existing park and open space in the CRA Plan. Greater access for the neighborhood could be achieved with partnership with MCSD. <i>Opportunities for: improved fencing, playground equipment and access for the neighborhood outside of school hours, landscaping</i>	<ul style="list-style-type: none"> Port Salerno NAC, CRA Martin County School District MC Parks and Recreation 	Yes - noted as existing	
F	1	Salerno Creek Park	Creating a linear park between the Calsern Basin and Railway Avenue. <i>Opportunities for: trail, pedestrian scale lighting, landscaping, informational/education boards, story trail</i>	<ul style="list-style-type: none"> Port Salerno NAC, CRA MC Public Works MC Environmental Resource Division MC Parks and Recreation Private property owners 	Yes	Yes FY27
G	2	Salerno Basin Trail and Pocket Parks	Creating access to the Salerno Basin within the rights of way that dead-end into the Salerno Basin, but do not have clear access to trail in multiple locations. This includes a new trail at the southern end of Salerno Basin between Grant and Lee Streets on the west and east side of the Basin. <i>Opportunities for: sidewalk, pedestrian scale lighting, landscaping, benches, informational/education boards, County fence</i>	<ul style="list-style-type: none"> Port Salerno NAC, CRA MC Public Works MC Environmental Resource Division MC Parks and Recreation 	Yes	
E	3	Broward Street Trail	A trail along the existing canal (Broward Street ROW) to the Manatee Pocket. <i>Opportunities for: trail, pedestrian scale lighting, landscaping, informational/education boards, story trail</i>	<ul style="list-style-type: none"> Port Salerno NAC, CRA MC Public Works MC Environmental Resource Division MC Parks and Recreation 	Yes	
J	4	Palmetto Road Linear Park	<i>Opportunities for: trail, pedestrian scale lighting, landscaping, County fence</i>	<ul style="list-style-type: none"> Port Salerno NAC, CRA MC Environmental Resource Division MC Public Works MC Parks and Recreation Manatee Creek HOA 	Yes	

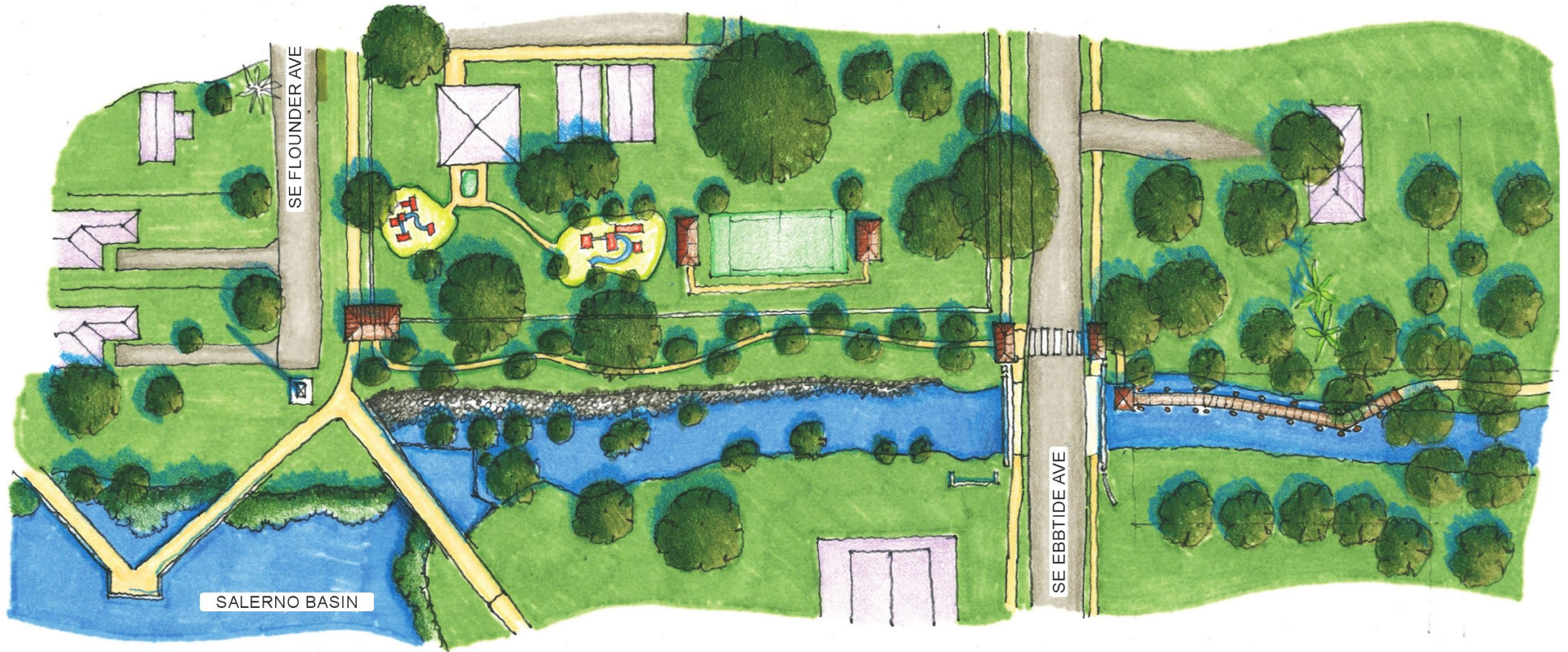
*All projects support CRA goals although some are not specifically called out with detail in the 2009 CRA Plan. Many of the projects described would be included in the Manatee Pocket Walk and Comprehensive Bike and Pedestrian Connections. Yes indicates more specific details were provided.



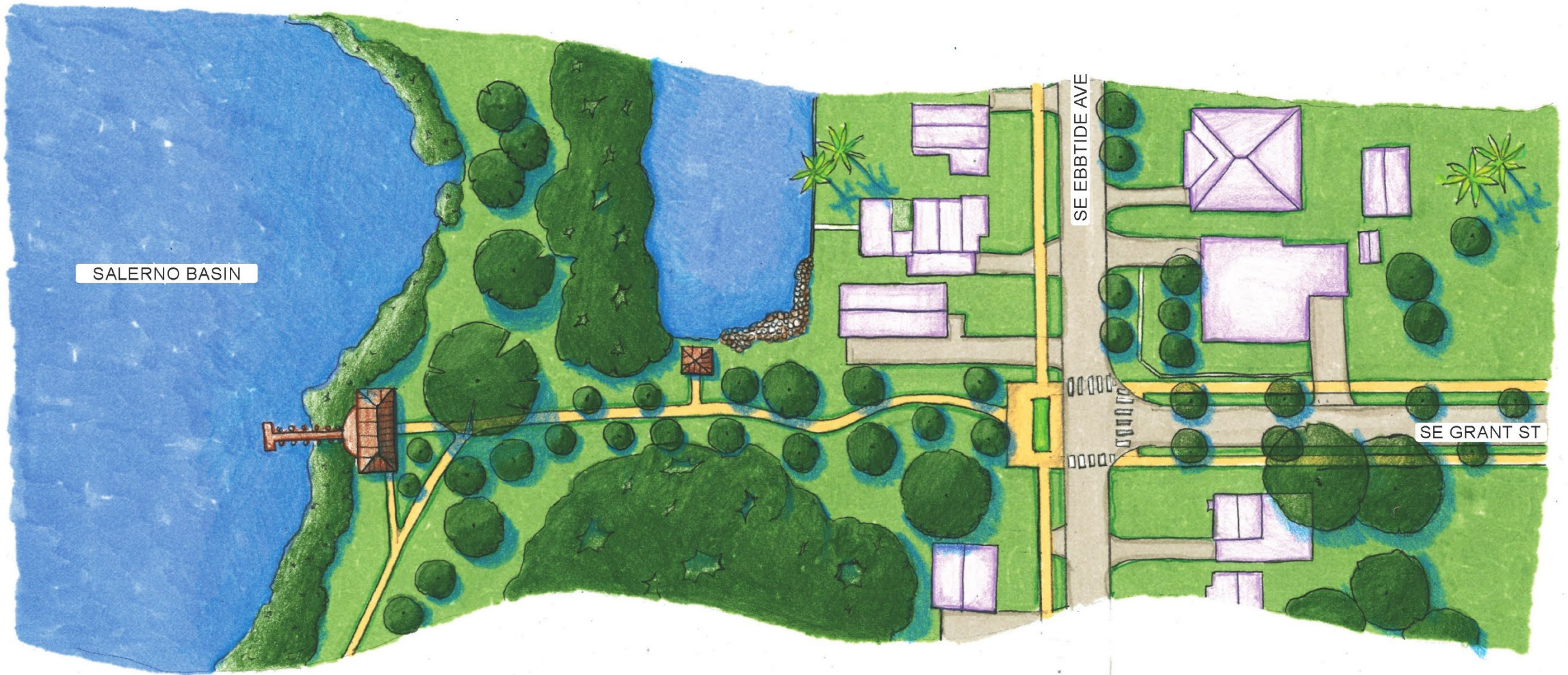
Salerno Creek Park



D Community Playground at the Old School House



G Salerno Basin Trail and Pocket Parks



E Broward Street Trail



B

Azimuth Way Linear Park Concept Plan



Project Schedule

- **February 6** Kick of Meeting with County Staff
 - **April 9** Port Salerno Neighborhood Advisory Committee
 - **April 27** Community Redevelopment Agency Board
-

Thank You!

Jessica Seymour, RA, LEED AP
Principal Program Coordinator

Treasure Coast
Regional Planning Council
772.221.4060

jseymour@tcrpc.org