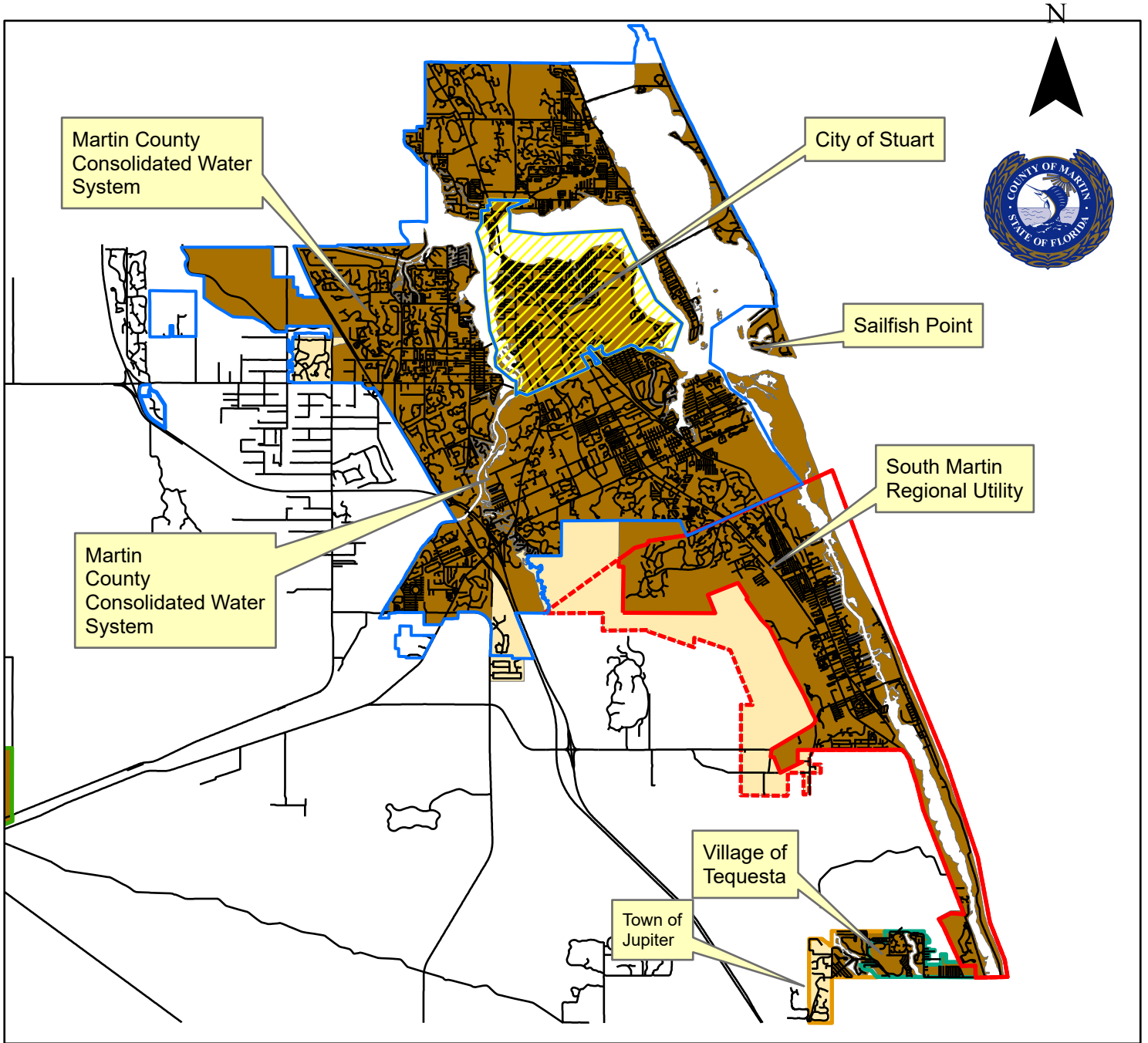
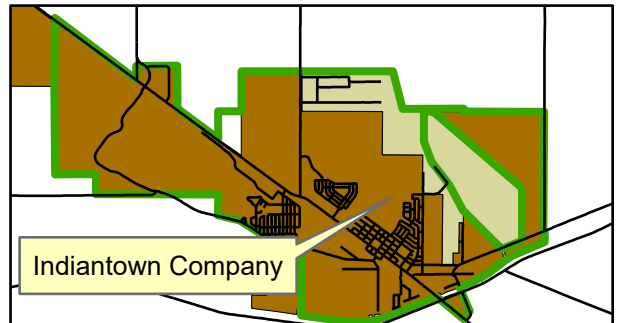


Martin County

Figure 11-1, Areas Currently Served By Regional Utilities



- | | | |
|---------------------|-----------|------------------|
| Stuart Service Area | Jupiter | NAME |
| SMRU Exclusive | Primary | CITY OF STUART |
| SMRU Presumed | Secondary | MCU SERVICE AREA |
| Tequesta | | |



Disclaimer
 "This Geographic Information System Map Product, received from Martin County ("COUNTY") in fulfillment of a public records request is provided "as is" without warranty of any kind, and the COUNTY expressly disclaims all express and implied warranties, including but not limited to the implied warranties of merchantability and fitness for a particular purpose. The COUNTY does not warrant, guarantee, or make any representations regarding the use, or the results of the use, of the information provided to you by the COUNTY in terms of correctness, accuracy, reliability, timeliness or otherwise. The entire risk as to the results and performance of any information obtained from the COUNTY is entirely assumed by the recipient."

Created By: Samantha Lovelady, AICP

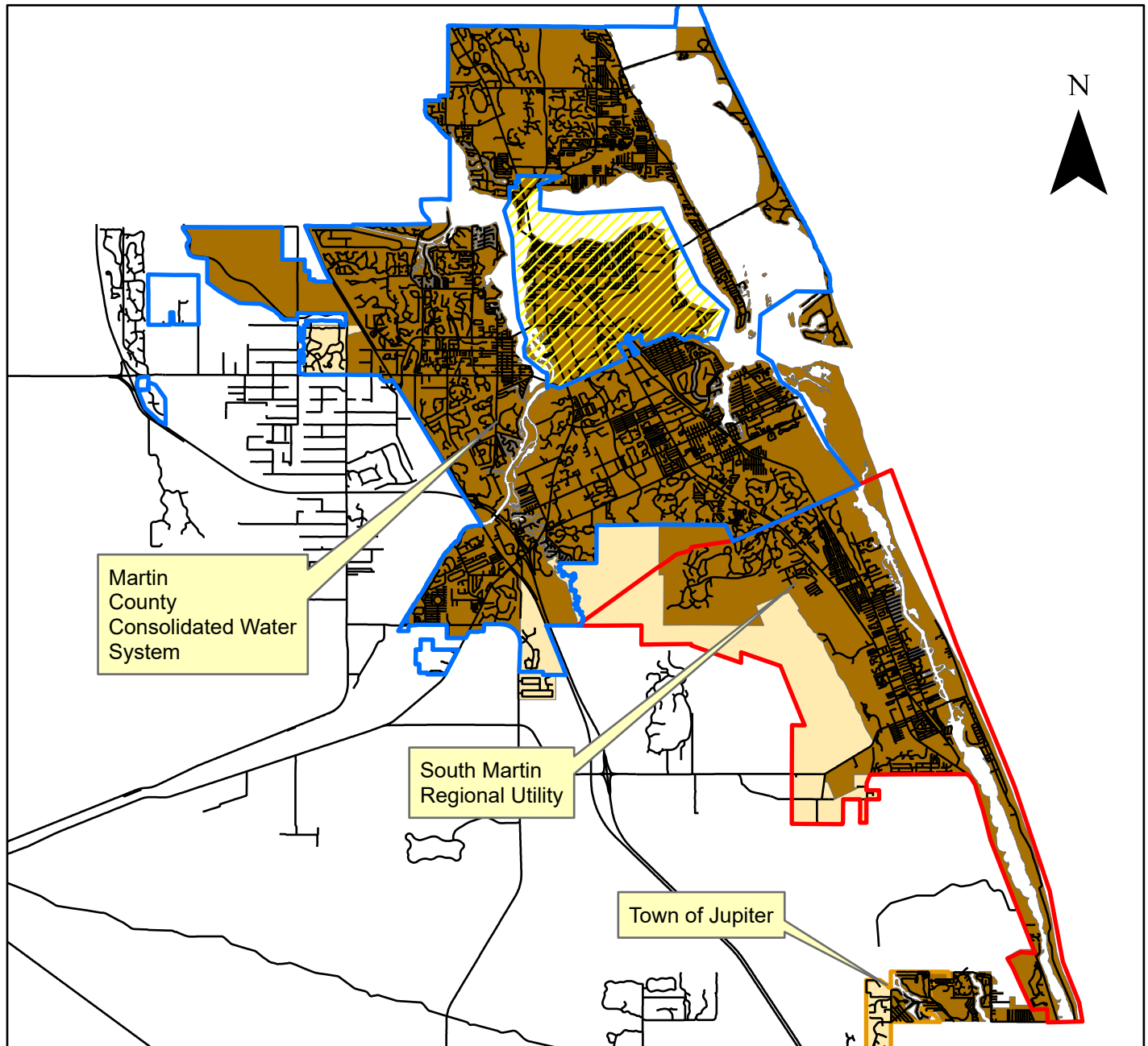
Plot Date: September 13, 2024

File: T:\GMD\div_comp_plan\cpas\2023\23-09 Martin Commerce TEXT\GIS_Maps\11-1 v2











Martin County

Figure 11-2, Potential Service Areas



Legend

- | | | | | | |
|---|---------------|---|------------------|---|------------------|
|  | SMRU |  | Indiantown |  | MCU Service Area |
|  | Jupiter |  | CITY OF STUART |  | Primary USD |
|  | Secondary USD |  | MCU SERVICE AREA | | |

Disclaimer
 "This Geographic Information System Map Product, received from Martin County ("COUNTY") in fulfillment of a public records request is provided "as is" without warranty of any kind, and the COUNTY expressly disclaims all express and implied warranties, including but not limited to the implied warranties of merchantability and fitness for a particular purpose. The COUNTY does not warrant, guarantee, or make any representations regarding the use, or the results of the use, of the information provided to you by the COUNTY in terms of correctness, accuracy, reliability, timeliness or otherwise. The entire risk as to the results and performance of any information obtained from the COUNTY is entirely assumed by the recipient."

