

Investment Program

**Project Completion Report
Applicant No. 008 – Port Salerno CRA
Property Improvement
4625 SE Dixie Highway
Cesar A. Sandoval**



GOLDEN GATE

HOBE SOUND

JENSEN BEACH

OLD PALM CITY

PORT SALERNO

RIO





ABOUT THE PROGRAM

Now that each CRA area has completed enhanced streetscapes, stormwater, water and sewer infrastructure and roadway improvements, the Agency has introduced an additional strategy to continue the CRA's successful redevelopment journey. The CRA Investment Program was presented and approved by the Board of County Commissioners on 11/22/2022. This program is a CRA-wide program available to commercial property owners and businesses within the six (6) CRA areas and is intended to facilitate successful redevelopment by addressing individual area needs through targeted programs like the **Property Improvement** and the **Fence/Landscape Program**.



GOLDEN GATE

HOBE SOUND

JENSEN BEACH

OLD PALM CITY

PORT SALERNO

RIO





PROGRAM TYPES

Property Improvement

80% reimbursement of project cost, up to a maximum of \$20,000

Qualifying Activities:

- exterior painting, stucco or siding
- installation of awnings
- new windows and/or doors
- exterior signage – 3 signs in total
- landscaping
- parking lot improvements
- repair or addition of exterior architectural elements (e.g., addition or improvement of balconies, porches, entryways or arcades)
- lighting
- decorative pavement
- dumpster enclosures
- fencing

Fence/Landscape

80% reimbursement of project cost, up to a maximum of \$10,000

Qualifying Activities

- Landscaping
- Fencing



TARGET AREAS

- **Golden Gate:** Properties in the Core, Corridor, Industrial, and General Subdistricts
- **Hobe Sound:** Properties in the Core, Corridor, and Railroad Corridor Subdistricts
- **Jensen Beach:** All properties within the Jensen Beach CRA boundaries
- **Old Palm City:** All properties within the Old Palm City CRA boundaries
- **Port Salerno:** Properties in the **Core Subdistrict** and General and Corridor Subdistricts that front Salerno Road
- **Rio:** Properties in the Core or Corridor Subdistricts that also front NE Dixie

Only properties in these target areas are eligible to apply



GOLDEN GATE

HOBE SOUND

JENSEN BEACH

OLD PALM CITY

PORT SALERNO

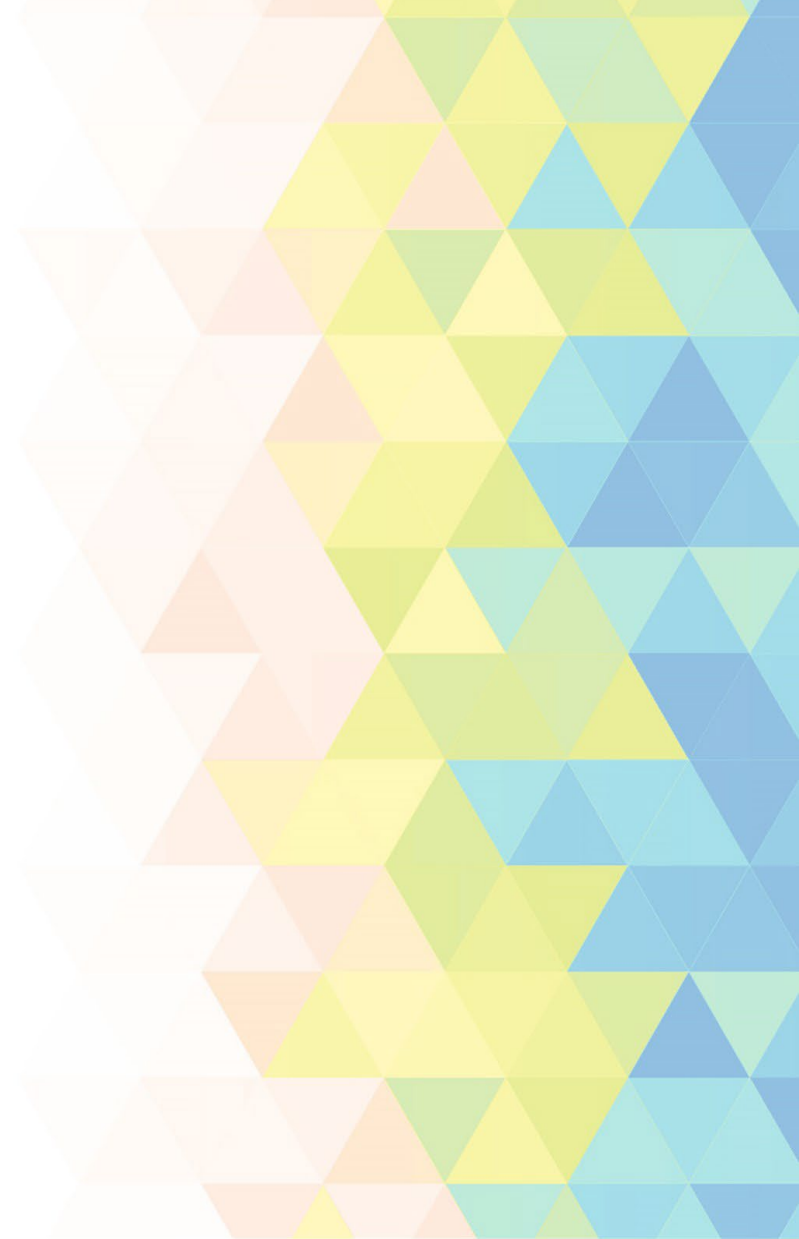
RIO





PROCESS

1. Are you a property owner or do you own a business in the targeted areas?
2. Review and complete the application and submit all required documents.
3. CRA staff will stay in touch and let you know when the application will be presented to the CRA board.
4. Once approved the work can start.
5. Once the project is completed the applicant must provide all required receipts before payment reimbursement.



GOLDEN GATE

HOBE SOUND

JENSEN BEACH

OLD PALM CITY

PORT SALERNO

RIO





APPLICANT #008

- **Presented to CRA Board:** January 22, 2024
- **Property Owner:** Cesars Holding Group LLC
- **Location:** 4625 SE Dixie Hwy (PS CRA)
- **Program Type:** Property Improvement
- **Proposed Building Improvements:** Update, repair, replace 3 exterior signs, new asphalt and striping of the parking lot
- **Improvements completed:** March 2024
- **Reimbursed:** \$14,540 - March 2024
- **Owner Contribution:** \$3,365

Comments from the applicant:

- *The Roofing General is excited to have a building that stands out in the community.*
- *The businesses in the Cesar Capital building are all thriving and see more foot traffic with our building improvements.*
- *We highly recommend the CRA Investment Program as these positive changes benefit our community and its businesses.*



**Owner
improvements
prior to
investment
application**

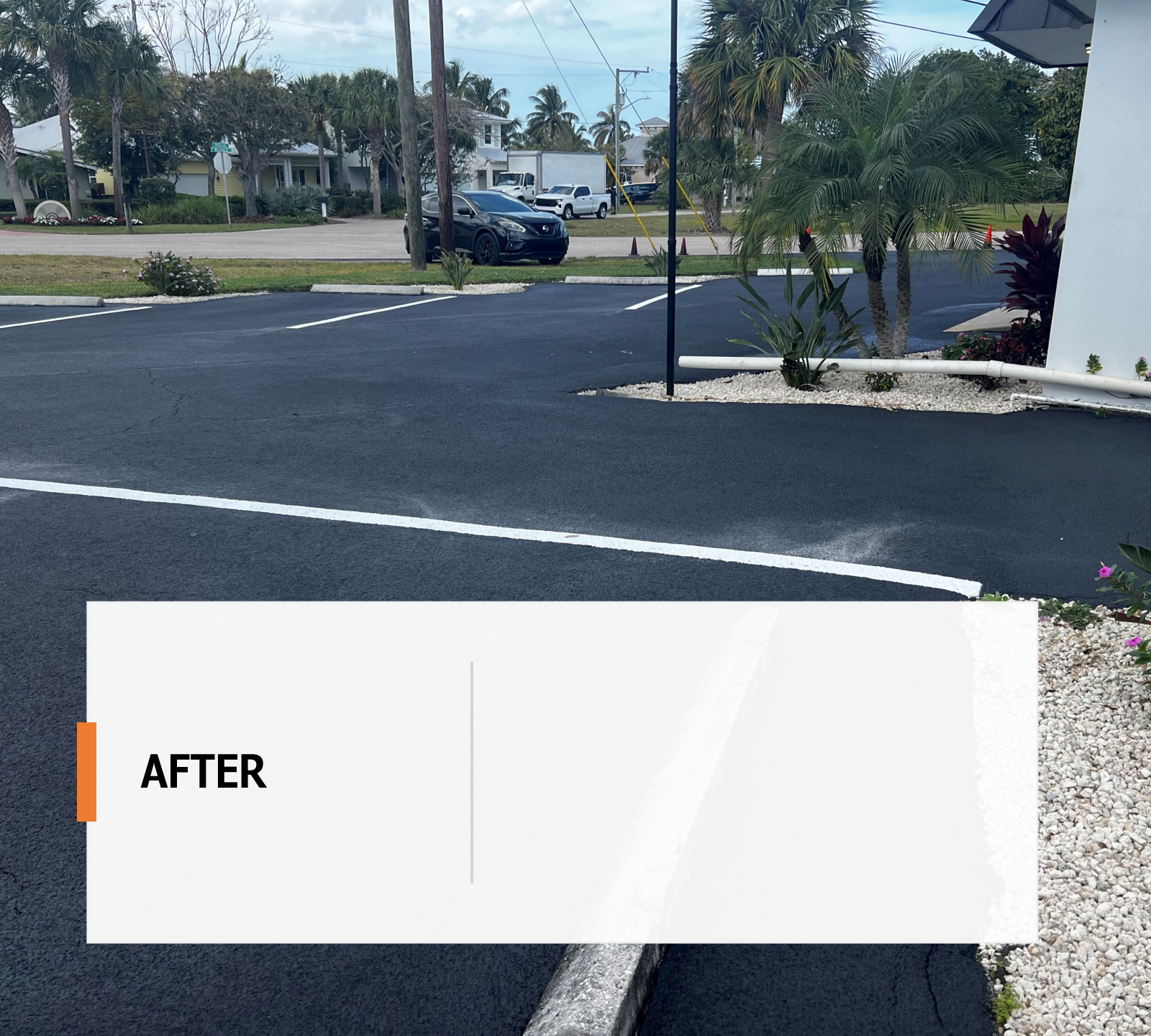


Before Pictures Signs and Parking Lot

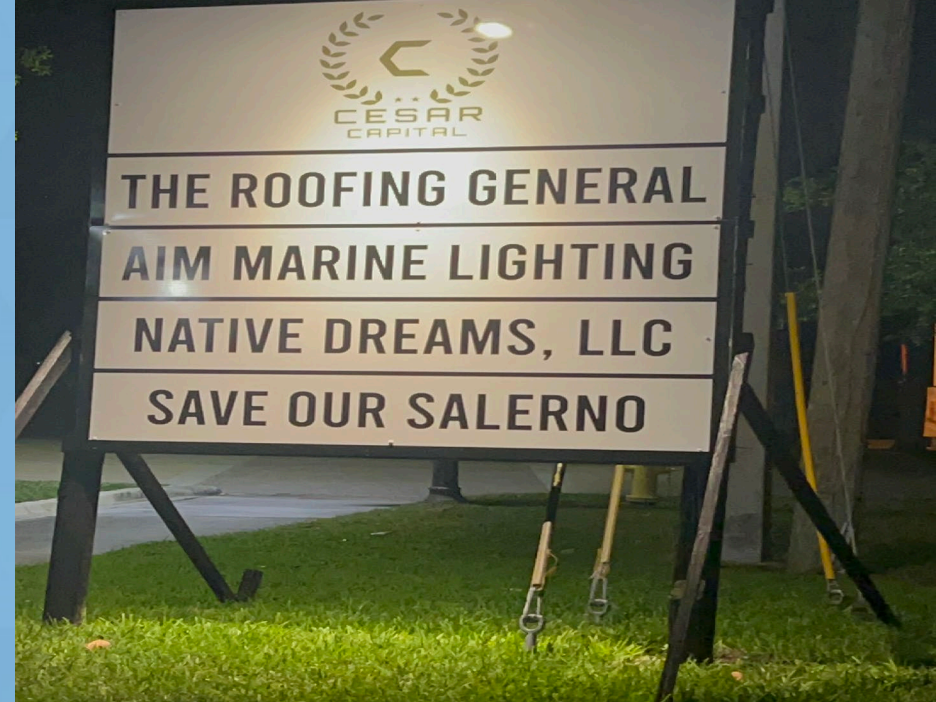


GOLDEN GATE

HOBE SOUND



AFTER



C

Before and After Comparison







Martin County Florida | You... | 2024 Budget - Google Sheets | Weight Watchers Kasey's List... | Utah state football coaching sta... | News, Politics, Sports, Mail & L... | (149 unread) - cojainandy@... | 3961 SE Westfield St - Google... | +

google.com/maps/@27.1484475,-80.2002187,3a.37.5y,152.08h,90.37t/data=!3m8!1e1!3m6!1sq3ETCuQ5vzjHCbNgMTmRQI2e0!5s20240501T000000!6shttps%2F%2Fstreetviewpixels-pa.googleapis.com%2Fv1%2Fthumbnail%3Fpanoid%3...



WHERE TO APPLY



Packet (in the back/Admin building)

OR

martin.fl.us/CRAInvestmentProgram

OR



GOLDEN GATE

HOBE SOUND


JENSEN BEACH

OLD PALM CITY

PORT SALERNO

RIO





Thank you!

Any Questions?



This document may be reproduced upon request in an alternative format by contacting the County ADA Coordinator (772) 320-3131, the County Administration Office (772) 288-5400, Florida Relay 711, or by completing our accessibility feedback form at: www.martin.fl.us/accessibility-feedback



GOLDEN GATE

HOBE SOUND

JENSEN BEACH

OLD PALM CITY

PORT SALERNO

RIO

