

© Copyright Lucido & Associates. These documents and their contents are the property of Lucido & Associates. Any reproductions, revisions, modifications or use of these documents without the express written consent of Lucido & Associates is prohibited by law.





Key / Location:



---

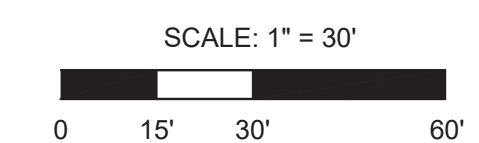
Project Team:

**Environmental**  
EW Consultants, Inc.  
1000 SE Monterey Commons Blvd., Suite 208  
Stuart, FL 34996

## Discovery Phase 3B

Martin County, Florida

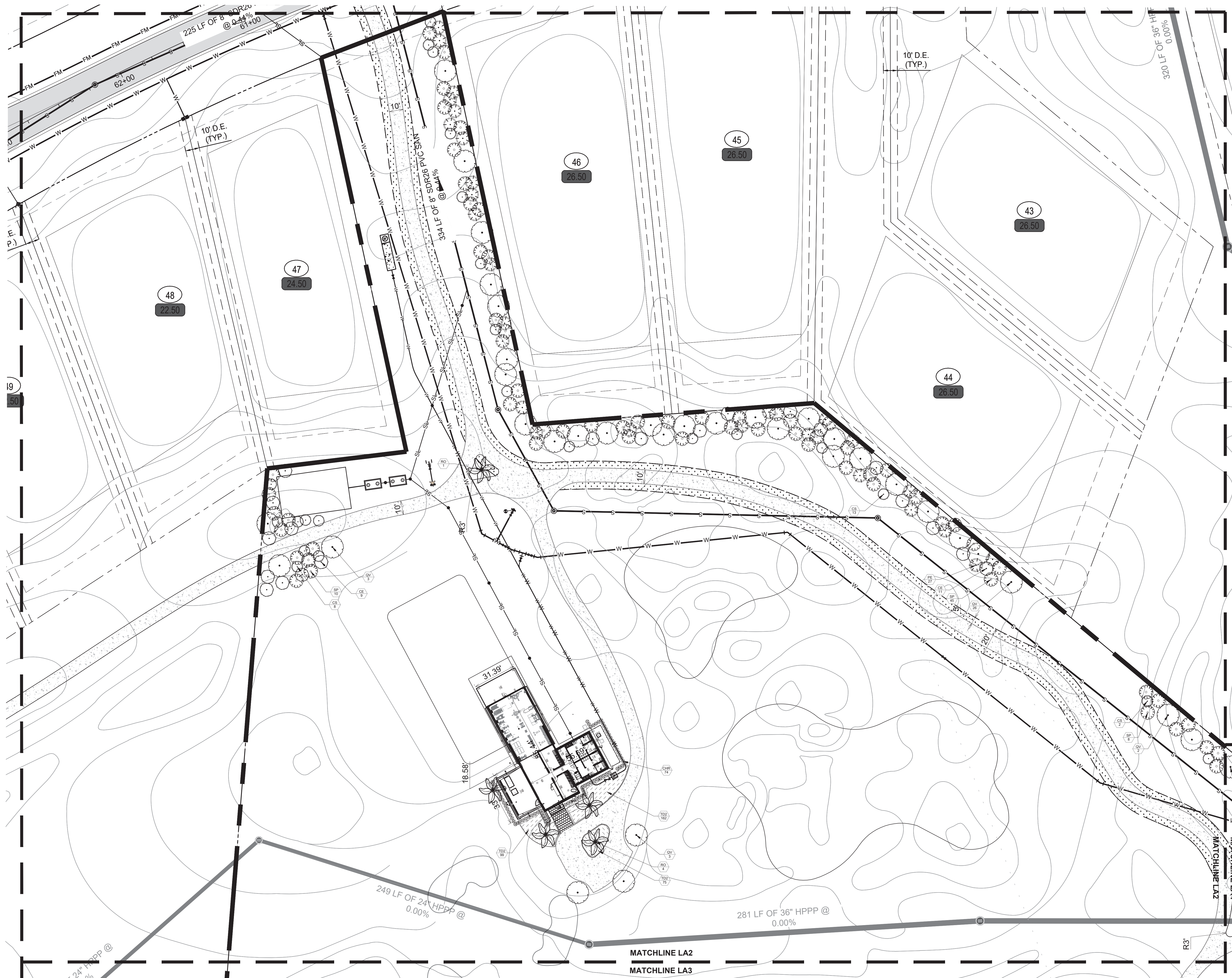
## Landscape Plan

[illegible]

REG. # 1018  
Thomas P. Lucido

Designer	SAW	Sheet
Manager	M.C.	
Project Number	21-540	
Municipal Number	---	
Computer File	Discovery Phase 3B La Plans.dwg	

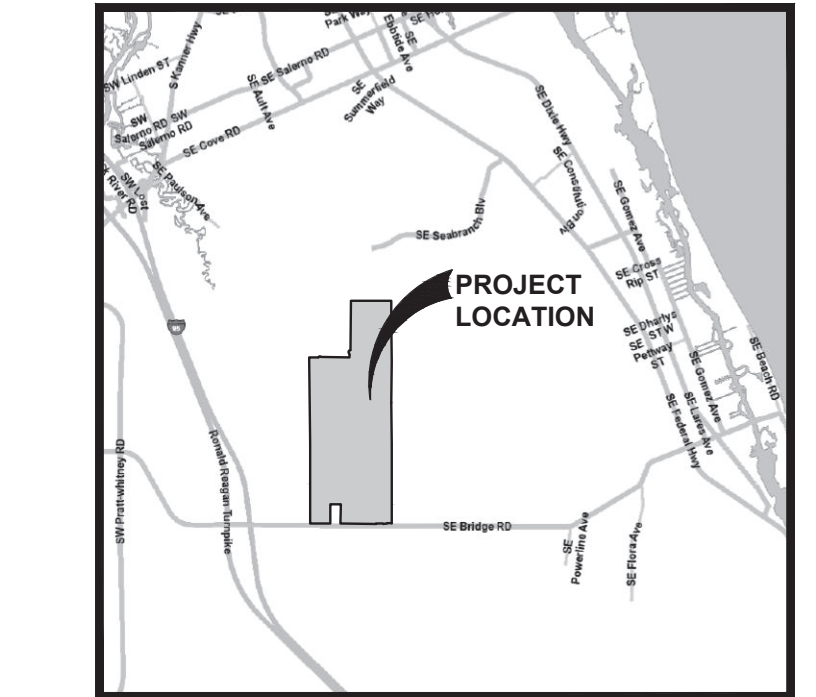
© Copyright Lucido & Associates. These documents and their contents are the property of Lucido & Associates. Any reproductions, revisions, modifications or use of these documents without the express written consent of Lucido & Associates is prohibited by law.







Key / Location:



N.T.S.

---

Project Team:

**Environmental**  
EW Consultants, Inc.  
1000 SE Monterey Commons Blvd., Suite 208  
Stuart, FL 34996

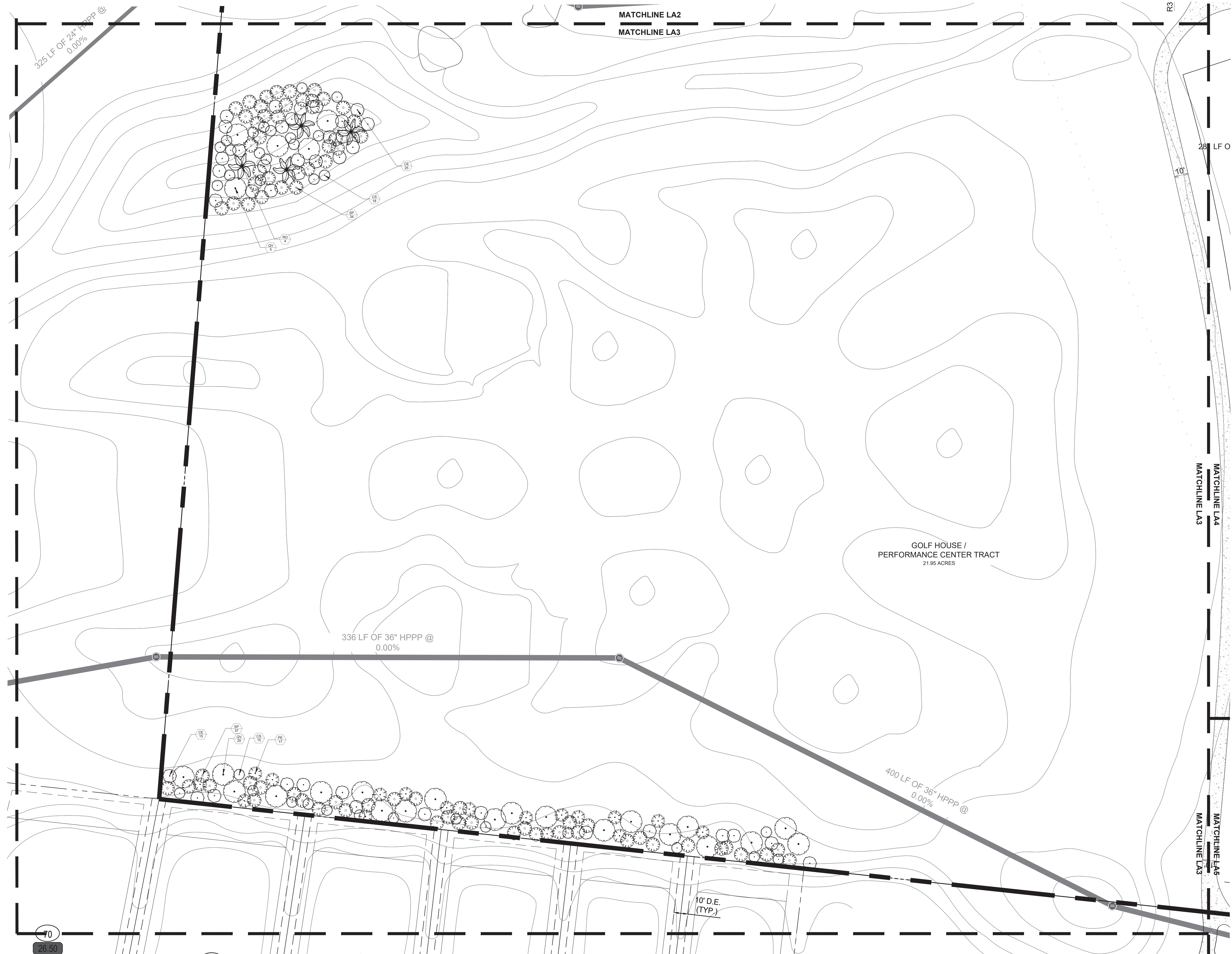
Martin County, Florida

[illegible]

Designer	SAW	Sheet
Manager	M.C.	
Project Number	21-540	
Municipal Number	---	
Computer File	Discovery Phase 3B La Plans.dwg	

### LA3

© Copyright Lucido & Associates. These documents and their contents are the property of Lucido & Associates. Any reproductions, revisions, modifications or use of these documents without the express written consent of Lucido & Associates is prohibited by law.







(772) 220-2100, Fax (772) 223-0220

N.T.S.

**Land Owner**  
Becker B-14 Grove, LTD.  
1701 S.R. A-1-A, Suite 204  
Vero Beach, FL 32963

**Developer**  
Discovery Land Company

**Land Planning**  
Vito Landscape Architecture / Planning  
181 Third Street, Suite 100  
San Rafael, CA 94901

Lucido and Associates, Inc.  
701 East Ocean Blvd.  
Stuart, FL 34994

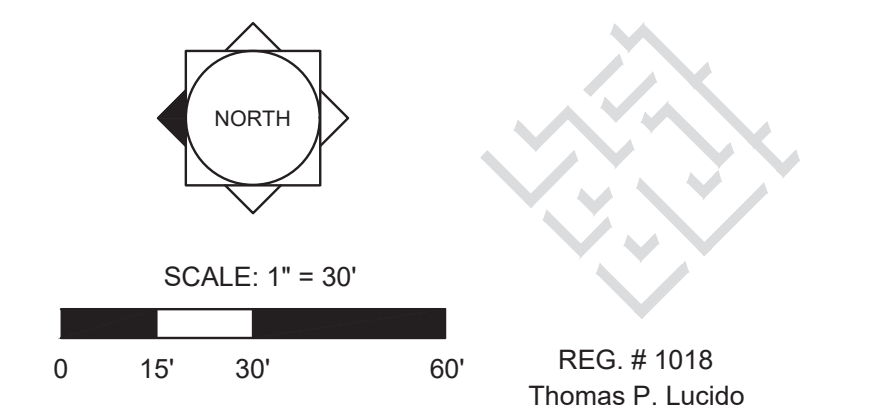
**Golf Course Design**  
Fazio Golf Course Designers, Inc.  
17735 SE Federal Highway  
Tequesta, FL 34996

**Civil Engineer / Survey**  
Velcon Engineering & Surveying, Inc.  
590 Peacock Blvd.  
Port St. Lucie, FL 34986

**Traffic Engineer**  
O'Rourke Engineering and Planning  
22 SE Semanole Street  
Stuart, FL 34994

**Environmental**  
EW Consultants, Inc.  
1000 SE Monterey Commons Blvd., Suite 208  
Stuart, FL 34996

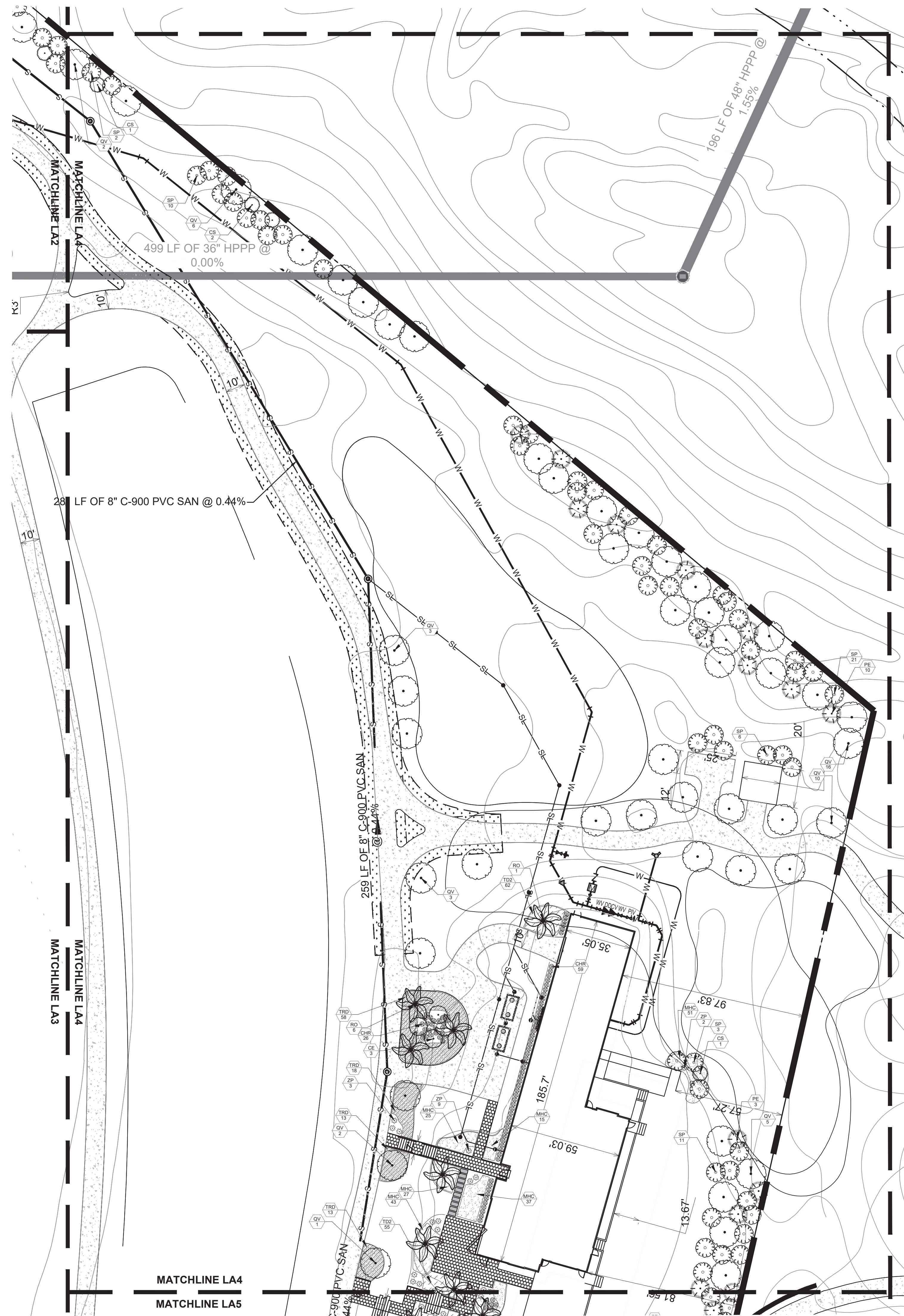
**Environmental**  
EW Consultants, Inc.  
1000 SE Monterey Commons Blvd., Suite 208  
Stuart, FL 34996

[illegible]

REG. # 1018  
Thomas P. Lucido

Designer	SAW	Sheet	<b>LA4</b>
Manager	M.C.		
Project Number	21-540		
Municipal Number	---		
Computer File	Discovery Phase 3B La Plans.dwg		

© Copyright Lucido & Associates. These documents and their contents are the property of Lucido & Associates. Any reproductions, revisions, modifications or use of these documents without the express written consent of Lucido & Associates is prohibited by law.



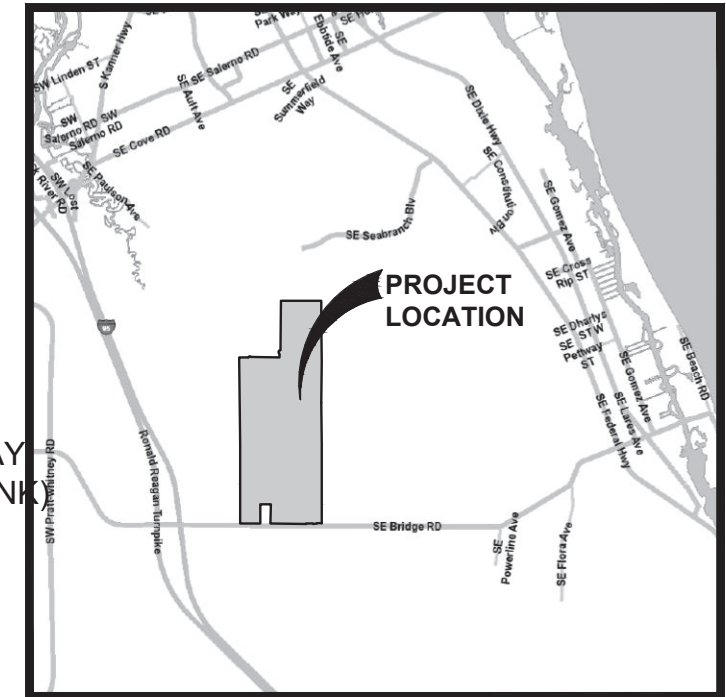




701 SE Ocean Blvd., Stuart, Florida 34994 (772) 220-2100, Fax (772) 223-0220

[illegible]





N.T.S

## Project Team:

**Land Owner**  
Becker B-14 Grove, LTD.  
1701 S.R. A-1-A, Suite 204  
Vero Beach, FL 32963

**Developer**  
Discovery Land Company

**Land Planning**  
Vita Landscape Architecture / Planning  
181 Third Street, Suite 100  
San Rafael, CA 94901

Lucido and Associates, Inc.  
701 East Ocean Blvd.  
Stuart, FL 34994

**Golf Course Design**  
Fazio Golf Course Designers, Inc.  
17755 SE Federal Highway  
Tequesta, FL 34996

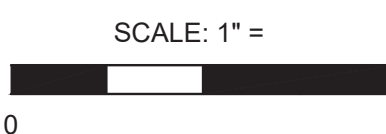
**Civil Engineer / Survey**  
Velcon Engineering & Surveying, Inc.  
590 Peacock Blvd.  
Port St. Lucie, FL 34986

**Traffic Engineer**  
O'Rourke Engineering and Planning  
22 SE Seminole Street  
Stuart, FL 34994

**Environmental**  
EW Consultants, Inc.  
1000 SE Monterey Commons Blvd., Suite 208  
Stuart, FL 34996

Martin County, Florida

Date	By	Description
8.02.2024	SAW	Submittal

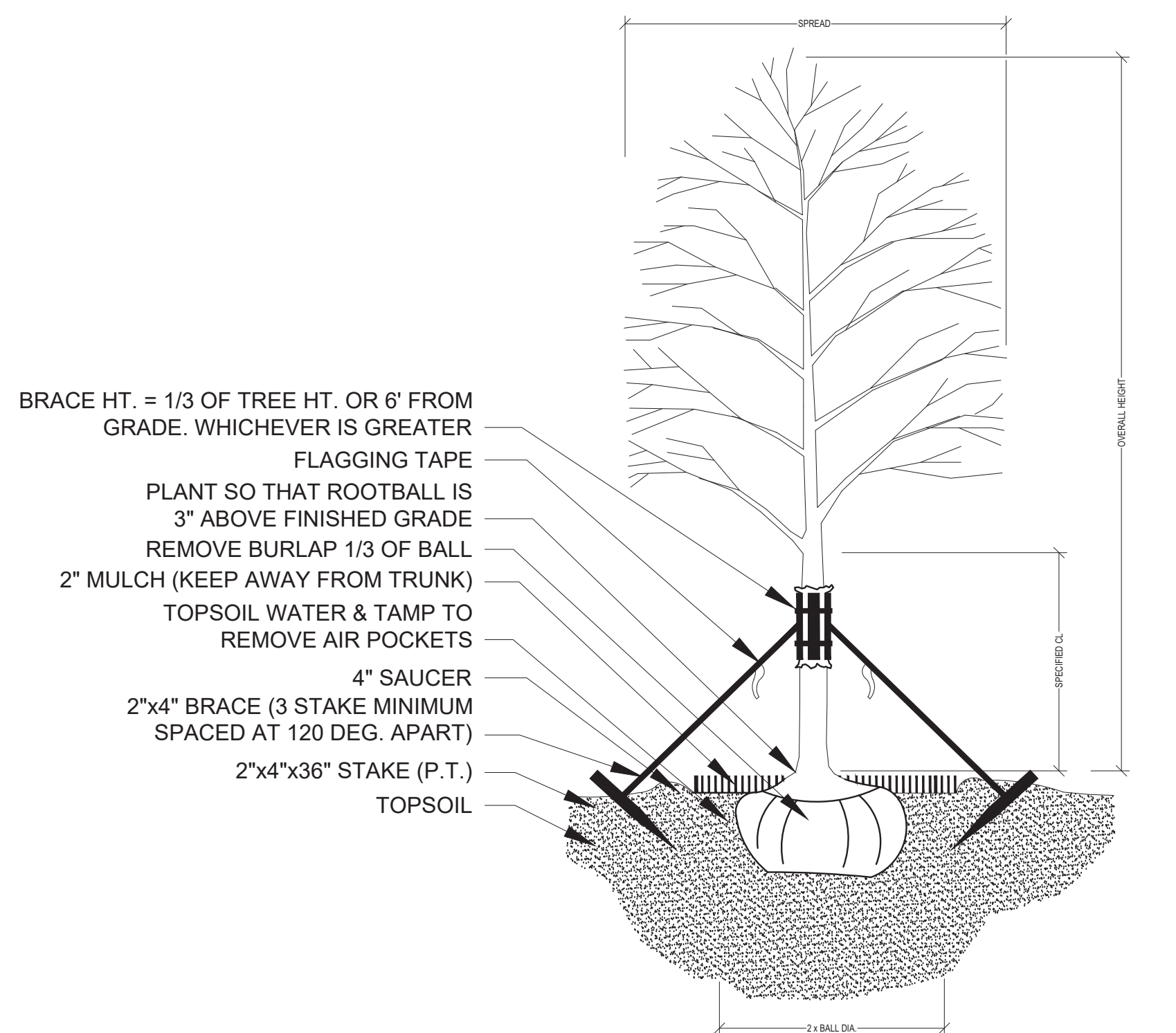
[illegible]

REG. # 1018  
Thomas P. Lucido

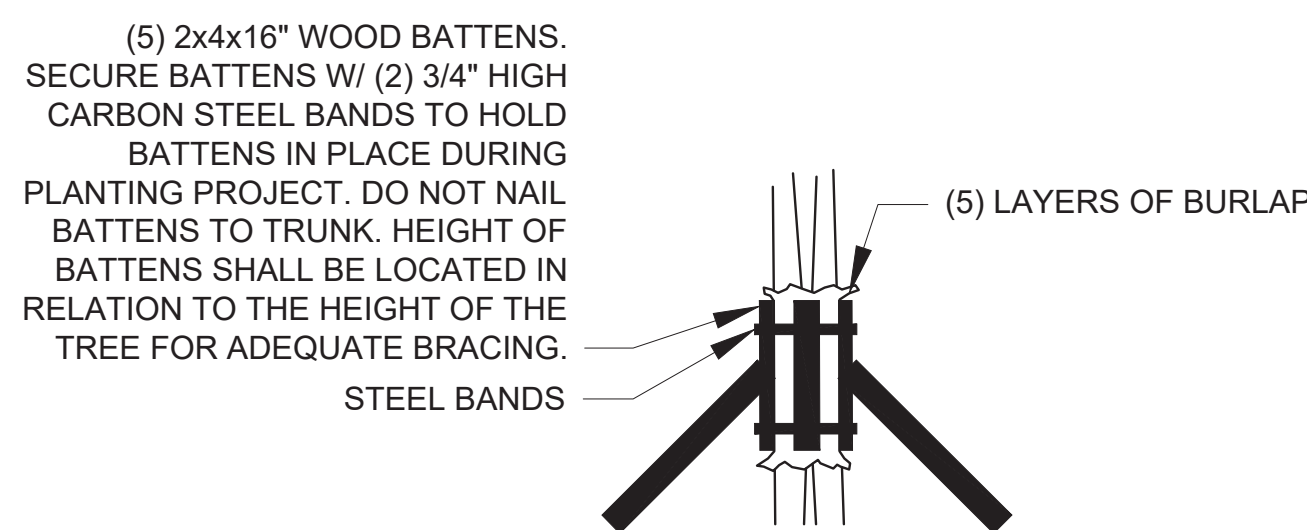
Designer	SAW	Sheet
Manager	M.C.	
Project Number	21-540	
Municipal Number	---	
Computer File	Discovery Phase 3B La Plans.dwg	

## LA6

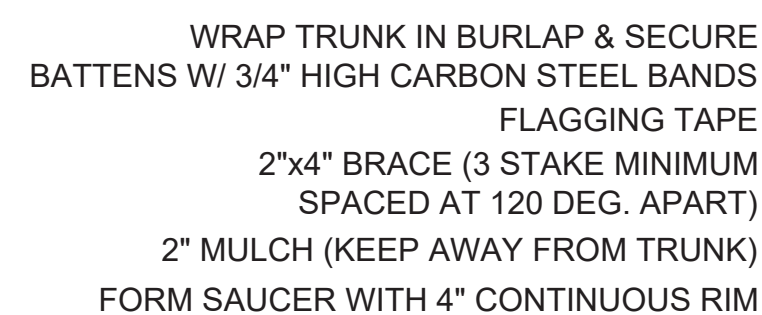
© Copyright Lucido & Associates. These documents and their contents are the property of Lucido & Associates. Any reproductions, revisions, modifications or use of these documents without the express written consent of Lucido & Associates is prohibited by law.



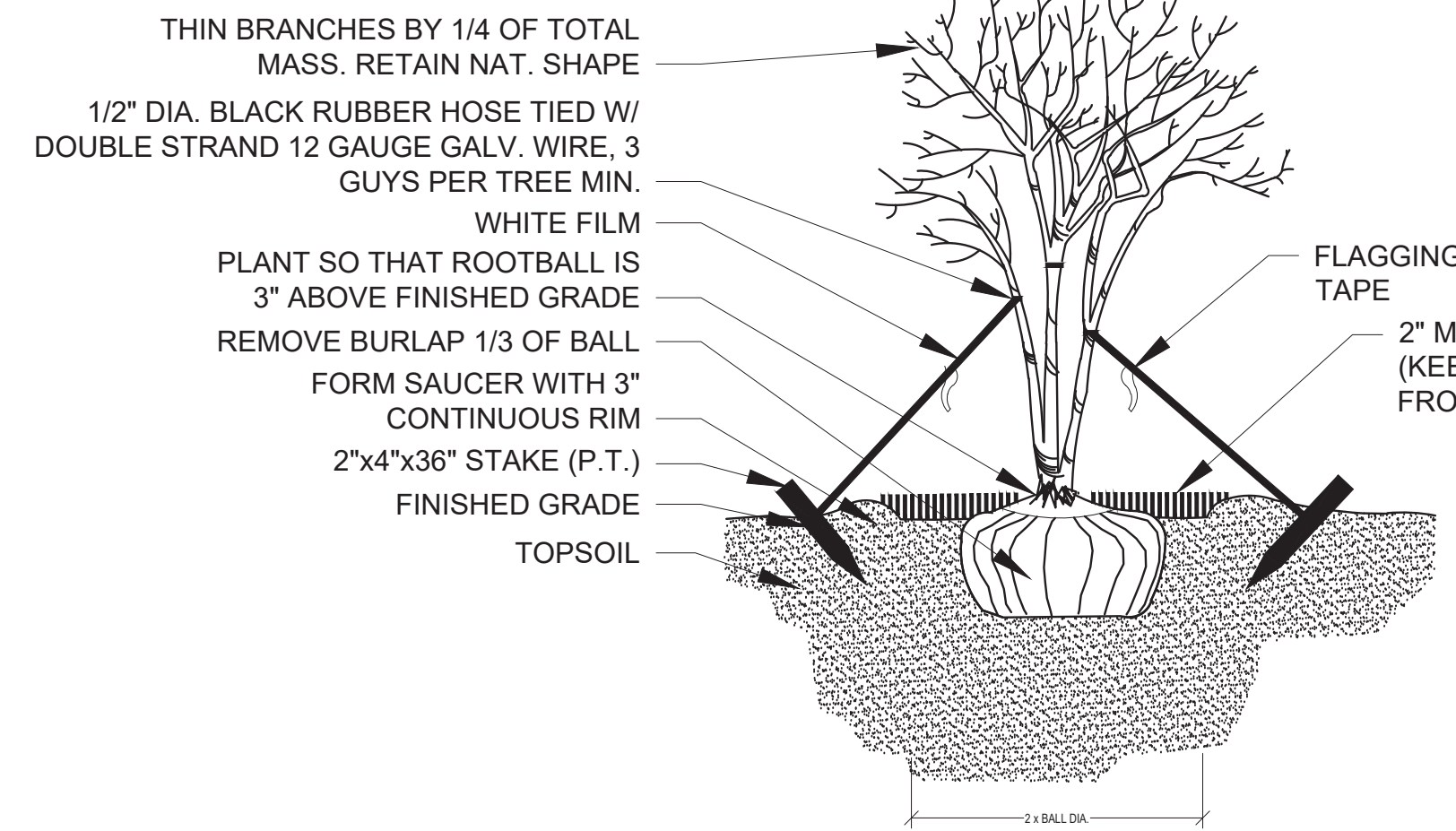
NOT TO SCALE



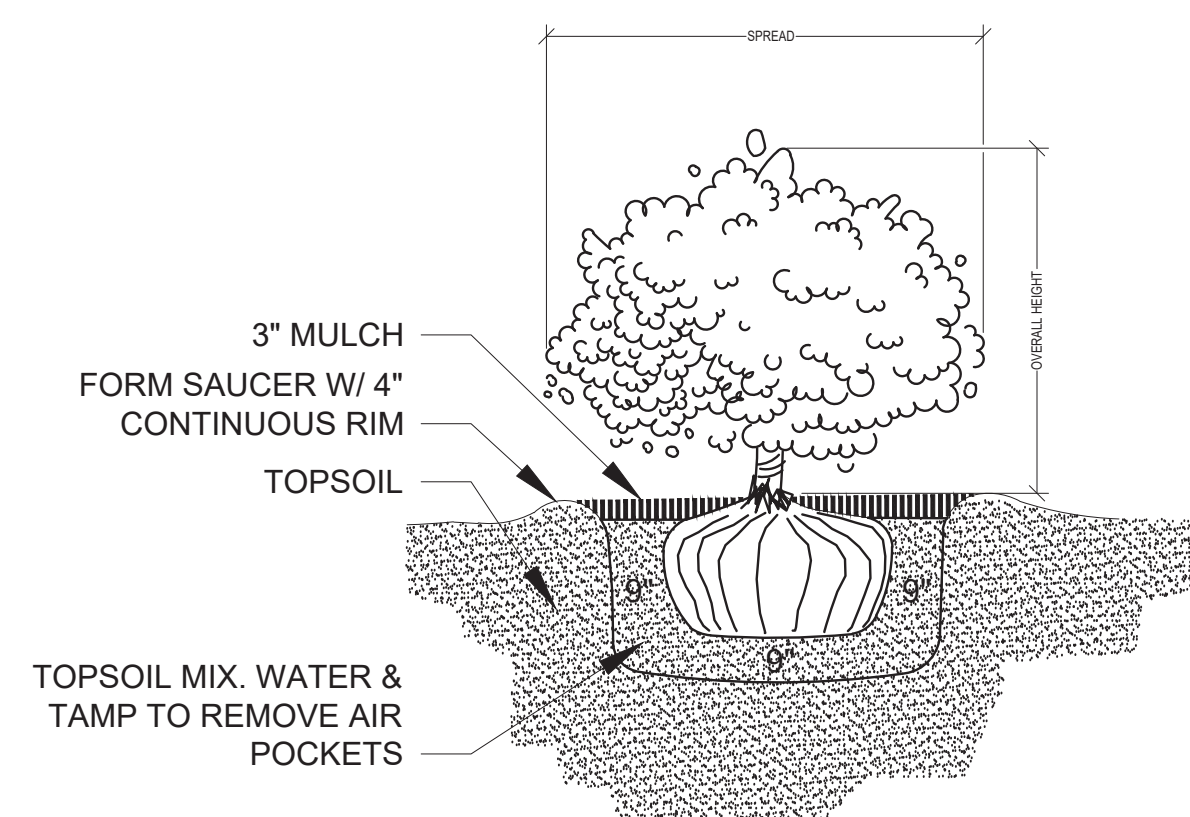
NOT TO SCALE



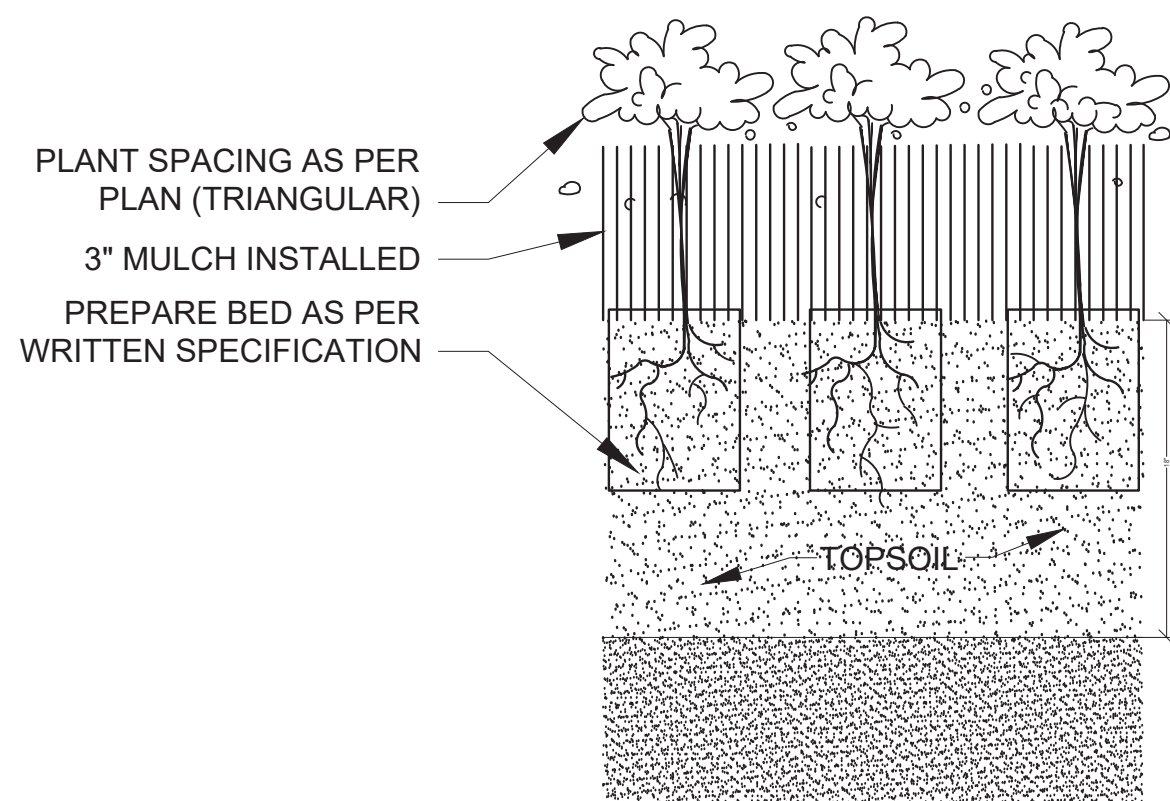
NOT TO SCALE



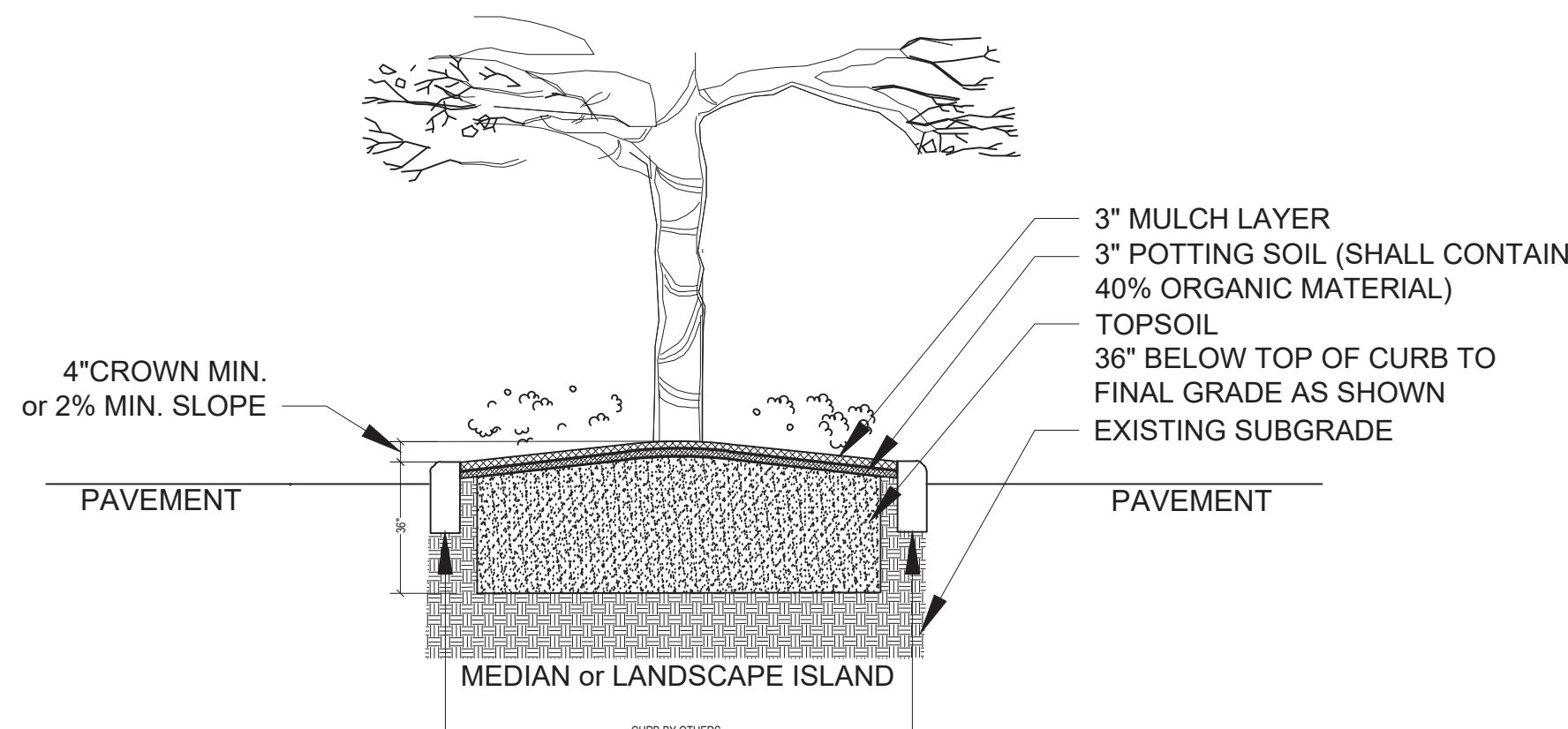
NOT TO SCALE



NOT TO SCALE



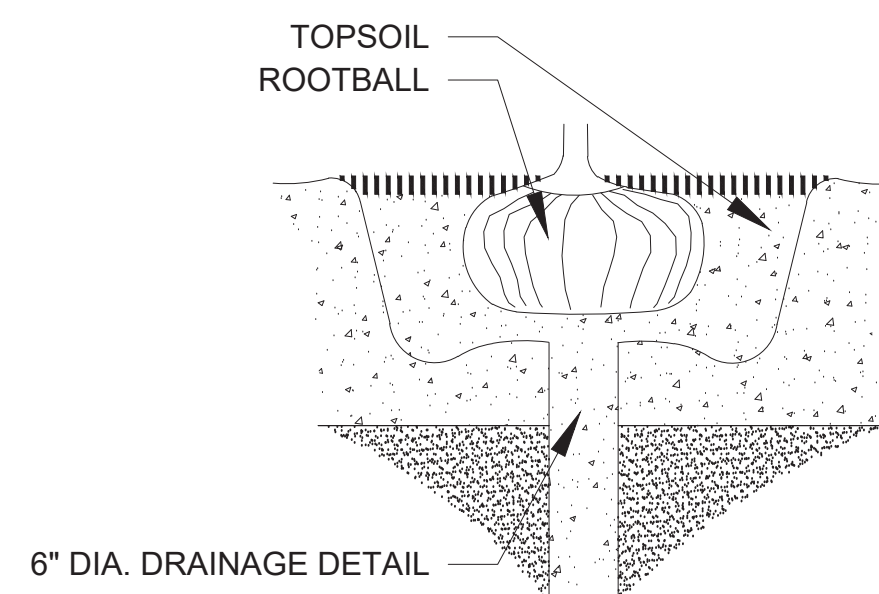
NOT TO SCALE



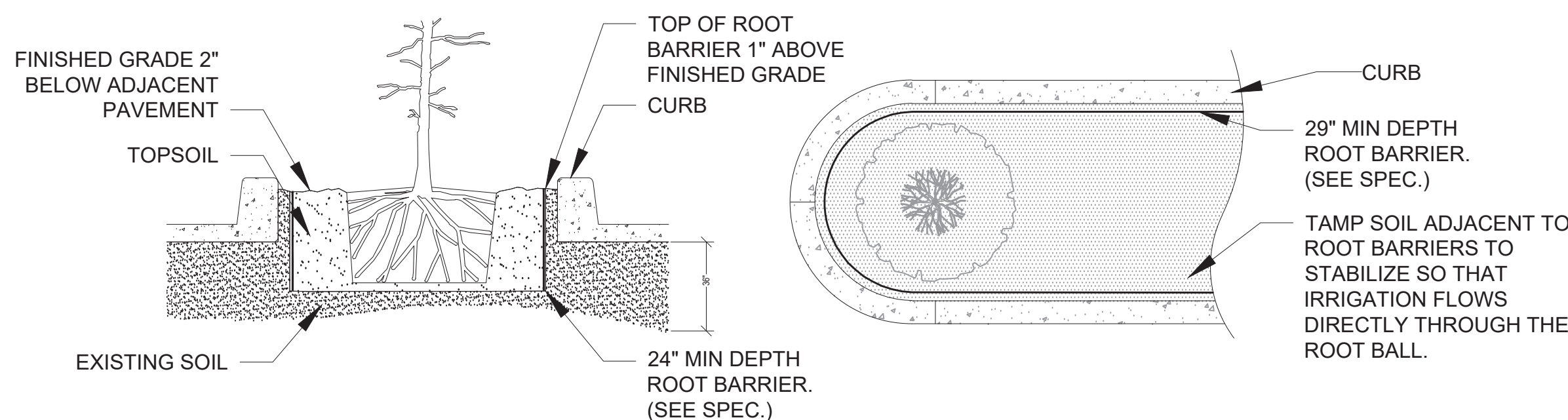
THIS DETAIL SHOWN DEPICTS A MEDIAN AND/OR LANDSCAPE ISLAND AND IS FOR GRAPHIC PURPOSES ONLY; SOIL PREPARATION SHALL APPLY TO ALL TREE, SHRUB, & GROUND COVER AREAS. THIS DOES NOT INCLUDE SOD AREAS.

NOT TO SCALE

- TOPSOIL SHALL BE NATURAL, FRIABLE, FINE LOAMY SOIL POSSESSING CHARACTERISTICS OF REPRESENTATIVE TOPSOIL IN THE VICINITY OF THE PROJECT SITE THAT PRODUCES HEAVY GROWTH.
- TOPSOIL SHALL HAVE A PH RANGE OF 5.5-7.4, FREE FROM SUBSOIL, WEEDS, LITTER, SODS, CLAY, STONES, STUMPS, ROOTS, TRASH, HERBICIDES, TOXIC SUBSTANCES, OR ANY OTHER MATERIAL WHICH MAY BE HARMFUL TO PLANT GROWTH, OR HINDER PLANTING OPERATIONS.
- TOPSOIL SHALL CONTAIN A MINIMUM OF 3% ORGANIC MATERIAL.
- TOPSOIL MUST PERCOLATE WATER AT A RATE OF 1" PER HOUR (SEE ALSO DRAINAGE TESTING DETAIL FOR TREES)
- LANDSCAPE AREA SOILS SHALL BE APPROVED BY LANDSCAPE ARCHITECT/OWNER PRIOR TO PLANTING

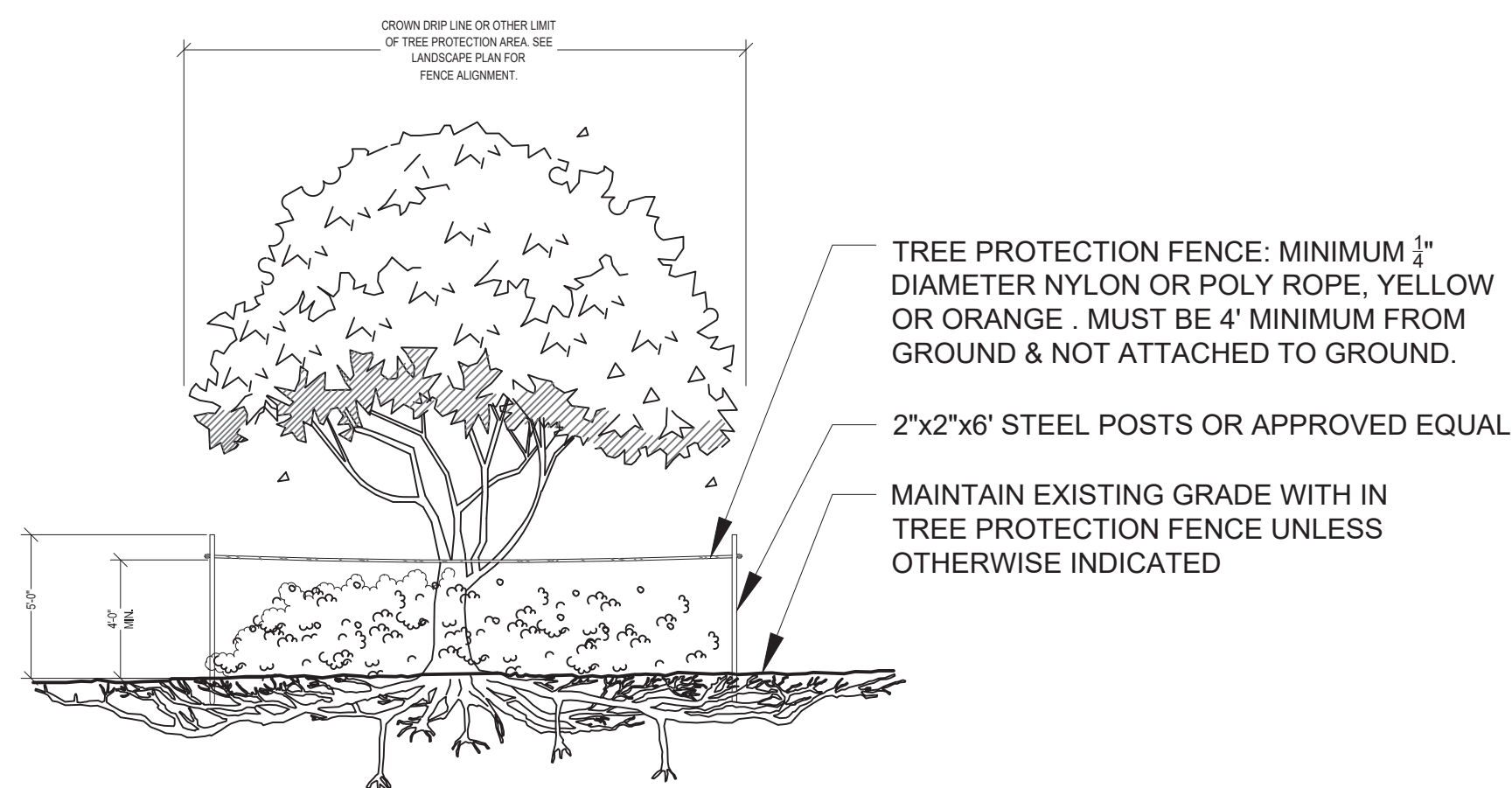


NOT TO SCALE



NOT TO SCALE

**NOTES:**  
1- ROOT BARRIER SHALL BE "BIO-BARRIER 29" DEPTH OR APPROVED EQUAL.  
2- ROOT BARRIER SHALL BE INSTALLED PER MANUFACTURER'S SPECIFICATIONS AND RECOMMENDATIONS.



NOT TO SCALE

NOTES:

- 1- SEE LANDSCAPE PLAN FOR FENCE ALIGNMENT.
- 3- NO PRUNING SHALL BE PERFORMED EXCEPT BY APPROVED ARBORIST.
- 4- NO EQUIPMENT SHALL OPERATE INSIDE THE PROTECTIVE FENCING INCLUDING DURING FENCE INSTALLATION AND REMOVAL.

PRIOR TO PLANTING, ALL PLANTING PITS SELECTED FOR TESTING SHALL BE TESTED IN THE FOLLOWING MANNER.

- A. DIG EACH PLANTING PIT TO THE MINIMUM SPECIFIED SIZE.
- B. FILL PLANTING PIT WITH TWELVE INCHES (12") OF WATER, IF THE WATER LEVEL DROPS FOUR (4") OR MORE WITHIN FOUR (4) HOURS, THE DRAINAGE IS SUFFICIENT AND A DRAINAGE CHANNEL IS NOT REQUIRED. IF THE WATER LEVEL DROPS LESS THAN FOUR INCHES (4") WITHIN THE FOUR (4) HOUR PERIOD, A DRAINAGE CHANNEL IS REQUIRED.
- C. WHERE REQUIRED, THE DRAINAGE CHANNEL MUST EXTEND DOWN THROUGH THE NON POROUS SOIL AND INTO POROUS SOIL. (SEE DETAIL)
- D. ALL MATERIAL REMOVED FROM THE DRAINAGE CHANNEL SHALL BE DISCARDED.
- E. WHEN BACKFILLING PLANTING PITS WITH NATIVE TOPSOIL, CARE MUST BE TAKEN TO KEEP THE CONSISTENCY OF THE SOIL MIX THE SAME THROUGHOUT THE PLANTING PIT AND DRAINAGE CHANNEL.



## PART 1: GENERAL CONDITIONS

## PART 2: MATERIALS

2.01	PLANT MATERIALS:
A.	A complete list of plants is shown on the drawings, including a schedule of quantities, sizes, and such other requirements deemed necessary. In the event discrepancies occur, the specifications on the drawings shall govern.
B.	Substitutions: Substitutions of plant materials or changes in size or spacing of materials will be permitted ONLY upon written authorization by the Owner or the Landscape Architect. If plant material is not of sufficient size to meet applicable codes, a letter of variance from the appropriate agency must be obtained by the Contractor prior to issuance of any change order. If material of smaller size is to be accepted, the quantity of material shall be increased, at no additional cost to the Owner, to meet the intent of the drawings.
C.	All plant materials shall have a habit of growth that is normal for the species and shall be healthy, vigorous and equal to or exceed the measurements specified in the plant list, which are the minimum acceptable sizes. Plants shall be measured before pruning with branches in normal position. Any necessary pruning shall be done at the time of planting.
D.	All plant materials shall be nursery grown, unless otherwise noted, Florida #1 or better and shall comply with all required inspections, grading standards and plant regulations as set forth by the Florida Department of Agriculture's Grades and Standards for Nursery Plants, most current addition and Grades and Standards for Nursery Plants, most current addition.
E.	Plants that do not have the normal balance of height and spread typical for the respective plant shall not be acceptable.
F.	The Landscape Contractor shall install each plant to display its best side. Adjustments may be required if plants are not installed properly and/or approved by the Landscape Architect at no additional cost to owner.

## 2.02 INSPECTION

The Landscape Architect and Owner may inspect trees and shrubs at place of growth or at site before planting, for compliance with the Requirements for genus, species, variety, size and quality. The Landscape Architect and Owner retain the right to further inspect trees and shrubs for size and condition of balls and root systems, insects, injuries and latent defects, and to reject unsatisfactory or defective material at any time during progress of work. Rejected plant materials shall be immediately removed from project site.

**2.03 PROTECTION OF PLANT MATERIALS:**

**A.** Balled and burlapped plants (B & B) shall be dug with firm natural balls of earth of sufficient diameter and depth to encompass the fibrous and feeding root system necessary for full recovery of the plant. Balls shall be firmly wrapped with burlap similar materials and bound with cord, rope, or wire mesh. All collected plants shall be balled and burlapped.

**B.** Plants with broken, damaged or insufficient rootballs will be rejected.

**C.** All plant material shall be protected from possible bark injury or breakage of branches. All plants transported by open trucks shall be adequately covered to prevent windburn, drying or damage to plants.

**D.** Plants which cannot be planted immediately on delivery to the site shall be covered with moist soil, mulch or other protection from the drying of wind and sun. All plants shall be watered as necessary by the Landscape Contractor until planted.

**2.04 STORAGE**

**A.** All plant materials shall be stored on the site in designated areas, specified by the Landscape Architect or Owner's agent.

**B.** No plant material shall be stored longer than seventy-two (72) hours unless approved by Landscape Architect and/or owner.

**C.** The Landscape Architect reserves the right to reject any plant materials not in conformance with these specifications.

**D.** All rejected material shall be immediately removed from the site and replaced with acceptable material at no cost to the Owner.

**2.05 PROTECTION DURING PLANTING:**

**A.** Trees moved by winch or crane shall be thoroughly protected from chain marks, girdling or bark slippage by means of burlap, wood battens or other approved methods. Battens shall NOT be attached to the tree with nails

**2.06 TOP SOIL:**

**A.** Planting soil for all plantings shall consist of topsoil and be natural, friable, fertile, fine loamy soil possessing characteristics of representative topsoil in the vicinity of the project site that produces heavy growth. Topsoil shall have a PH range of 5.5-7.4, free from subsoil, weeds, litter, sods, clay, stones, stumps, roots, trash, herbicides, toxic substances, or any other material which may be harmful to plant growth, or hinder planting operations. Topsoil shall contain a minimum of 3% organic material. Topsoil must percolate water at a rate of 1" per hour (See also drainage testing detail for trees)

**B.** Landscape Area Preparation. The intent of this section is to ensure a healthy growing environment for all planting material in all landscaped areas. Landscape Contractor to examine existing soils prior to planting to ensure conformance to all definitions of "Topsoil" (see Landscape Area Preparation Detail); In addition, a 3" layer of high organic (min 40%) potting soil shall be added to the topsoil and mixed in at time of planting. *East Coast Recycling Inc.* is a recommended source for imported Topsoil (if needed) as well as the top 3" layer of potting soil.

Existing soils must meet all definitions of "Topsoil" as described above in all planting areas throughout the site. If existing soils do not meet all definitions of Topsoil, please refer to the "Landscape Area Preparation" detail. Examination may require existing soils to be tested by an accredited testing laboratory. Should a soil test be necessary, Contractor shall contact soil testing lab directly to confirm such lab's soil collection and transmittal protocol; all costs if any shall be borne by the Contractor. Contractor shall provide to Landscape Architect for review the results of the soil test if conducted. Contractor shall schedule an on-site meeting with Landscape Architect to review existing and/or imported soils prior to planting. The Landscape Area Preparation is the responsibility of the Landscape Contractor. He/she shall except all responsibility of planting soils and shall honor all guarantee items in section 1.08.

**2.07 FERTILIZER:**

**A.** Commercial fertilizer shall comply with the state and local fertilizer laws. Nitrogen shall not be less than 40% from organic source. Inorganic chemical nitrogen shall not be derived from the sodium form of nitrate. Fertilizers shall be delivered to the site in unopened original containers, each bearing the manufacturer's guaranteed analysis. Any fertilizer that becomes caked or otherwise damaged shall be rejected.

**B.** Thoroughly mixed 3 lbs. of commercial fertilizer to each cubic yard of planting soil.

**C.** Tabletized fertilizer shall be Agriform planting tablets 20-10-5 formula, 21 gram or equal. All trees and shrubs shall be fertilized with tabletized fertilizer as follows. While backfilling plant holes, fertilizer tablets shall be equally spaced and placed adjacent to the ball mid-way in depth in accordance with the following rates:

1 gallon container	1 tablet
3 gallon container	2 tablets
5 gallon container	3 tablets
7 gallon container	5 tablets

Large tubs, wire baskets, grow bags, and balled and burlapped material shall have 1 tablet for each 1/2 inch of trunk diameter (measured 3 feet from ground) or for each foot of height or spread of larger shrub material. The Landscape Architect reserves the right to inspect and review the application of fertilizer.

**2.08 MULCH:**

**A.** Mulch material shall be clean, dry, free of weeds, seeds and pests, moistened at the time of application to prevent wind displacement. Cypress &/or Red mulch is prohibited.

**B.** All trees and shrub beds shall receive 3" mulch immediately after planting and thoroughly watered. Apply 2" max on tree & palm rootballs, keep 6" away from tree & palm trunks or as required by local jurisdiction.

**PART 3 EXECUTION**

**3.01 DIGGING:**

**A.** The Landscape Contractor shall exercise care in digging and other work so as not to damage existing work, including overhead wires, underground pipes and cables and the pipes and hydrants of watering systems. Should such overhead or underground obstructions be encountered which interfere with planting, the Owner shall be consulted and contractor will adjust the location of plants to clear such obstruction. The Contractor shall be responsible for the immediate repair of any damage caused by his work.

**3.02 GRADING:**

**A.** Grading for drainage, swales, etc. to within 4 inches of the finished grade to be provided by others.

**B.** It shall be the responsibility of the Landscape Contractor to provide the final grading during the course of landscape installation so as to bring sod and planting areas to their proper elevations in relation to walks, paving, drain structures, and other site conditions. The site grading plan must be checked prior to installation of sod to insure that drainage and other conditions will NOT be modified.

**3.03 PLANTING:**

**A.** Planting shall take place during favorable weather conditions.

**B.** The Contractor shall call for utility locates and ascertain the location of all utilities and easements so proper precautions can be taken not to damage or encroach on them.

**C.** Tree Planting shall be located where it is shown on the plan. No planting holes shall be dug until the proposed locations have been staked on the ground by the Contractor.

**D.** Excavation of holes shall extend to the required subgrades as specified on the planting diagrams located in the landscape plans. Plant pits shall be circular in outline and shall have a profile which conforms to the aforementioned "Tree and Shrub Planting Diagrams".

**E.** A representative number of planting pits (a minimum of one in every 25 feet throughout the entire site) shall be tested for proper drainage. See Landscape Details for complete testing methods and requirements.

**F.** Planting pits shall be excavated to the following dimensions and backfilled with Topsoil- see Landscape Area Preparation Detail;  
1 Gallon material (1 gal.): 12" x 12" x 12" min.  
3 Gallon material (3 gal.): 20" x 20" x 18" min.  
Lerio material (7 gal.): 30" x 30" x 24" min.  
Field grown material and trees: 1-1/2 times width of ball and depth of ball plus 12" min.

**G.** No planting or laying of sod shall be initiated until the area has been cleaned of existing sod or other plant materials, rough grass, weeds, debris, stones etc. and the ground has been brought to an even grade, with positive drainage away from buildings and towards drain inlets and swales and approved by Landscape Architect or owner's rep.

**H.** Each plant shall be planted in an individual hole as specified for trees, shrubs, and vines.

All plants shall be set to ultimate finished grade. No filling will be permitted around trunks or stems. All ropes, wire, stakes, etc., shall be removed from sides and top of the ball and removed from hole before filling in.

J. All flagging ribbon shall be removed from trees and shrubs before planting.

K. Excess excavation (fill) from all holes shall be removed from the site, at no additional expense to Owner.

L. All palms shall be backfilled with sand, thoroughly washed in during planting operations and with a shallow saucer depression left at the soil line for future watering's. Saucer areas shall be top-dressed two (2") inches deep with topsoil raked and left in a neat, clean manner.

3.04 PRUNING:

A. Remove dead and broken branches from all plant material. Prune to retain typical growth habit of individual plants with as much height and spread as possible in a manner which will preserve the plant's natural character.

B. Make all cuts with sharp instruments flush with trunk or adjacent branch, in such a manner as to insure elimination of stubs. Cuts made at right angles to line of growth will not be permitted.

C. Trees shall not be poled or topped.

D. Remove all trimming from site.

3.05 GUYING:

A. All trees over six (6') feet in height shall, immediately after setting to proper grade, be guyed with three sets of two strands, No. 12 gauge malleable galvanized iron, in tripod fashion. See Detail.

B. Wires shall not come in direct contact with the tree but shall be covered with an approved protection device at all contact points. Wires shall be fastened in such a manner as to avoid pulling crotches apart.

C. Stake & Brace all trees larger than 12" oa. See detail. Stakes shall be 2" x 2" lumber of sufficient length to satisfactorily support each tree.

D. Turnbuckles for guying trees shall be galvanized or cadmium plated and shall be of adequate size and strength to properly maintain tight guy wires.

3.06 WATER:

A. Each plant or tree shall be thoroughly watered in after planting. Watering of all newly installed plant materials shall be the responsibility of the Landscape Contractor until final acceptance by the Landscape Architect.

B. Prior to installing any irrigation system components, the contractor shall obtain a water sample from the proposed water supply and conduct a particle size and count analysis on the sample using the services of a reputable lab certified in such analysis. Submit the test results to the owner/owner's representative for review and approval. Do not proceed further with system installation until given written approval to do so.

3.07 SOD:

A. The Landscape Contractor shall sod all areas indicated on the drawings.

B. It shall be the responsibility of the Landscape Contractor to fine grade all landscape areas, eliminating all bumps, depressions, sticks, stones, and other debris.

C. The sod shall be firm, tough texture, having a compacted growth of grass with good root development. It shall contain no noxious weeds, or any other objectionable vegetation, fungus, insects, or disease. The soil embedded in the sod shall be good clean earth, free from stones and debris.

D. Before being cut and lifted, the sod shall have been mowed at least three times with a lawn mower, with the final mowing not more than seven days before the sod is cut. The sod shall be carefully cut into uniform dimensions.

E. 6-6-6 fertilizer with all trace elements is to be applied at the rate of 40 lbs. per 1,000 sq. ft. prior to laying sod.

F. Solid sod shall be laid with closely abutting, staggered joints with a tamped or rolled, even surface.

G. The finished level of all sod areas after settlement shall be one (1") inch below the top of abutting curbs, walks, paving and wood borders to allow for building turf.

H. If in the opinion of the Landscape Architect, top dressing is necessary after rolling, clean yellow sand will be evenly applied over the entire surface and thoroughly washed in.

3.08 SEEDING:

A. The Landscape Contractor shall remove all vegetation and rocks larger than (1") in diameter from areas to be seeded, scarify the area, then apply fertilizer at a rate of 500 lbs. per acre.

B. Application: Argentine Bahia Grass seed- 200 Pounds per acre mixed with common hulled Bermuda seed- 30 lbs. per acre. All other seed mixtures shall be applied per the manufacturer's instructions.

C. Roll immediately after seeding with a minimum 500 pound roller, then apply straw mulch at the rate of 2,500 pounds per acre.

D. Apply fertilizer at the rate of 150 lbs. per acre 45-60 days after seeding.

3.09 CLEANING UP:

A. The contractor shall at all times keep the premises free from accumulations of waste materials or rubbish caused by his employees or work. He shall leave all paved areas "broom clean" when completed with his work.

3.10 MAINTENANCE:

A. Maintenance shall begin immediately after each plant is installed and shall continue until all planting has been accepted by the Owner or Landscape Architect. Maintenance shall include watering, weeding, removal of dead materials, resetting plants to proper grades or upright positions, spraying, restoration of planting saucer and/or any other necessary operations.

B. Proper protection to lawn areas shall be provided and any damage resulting from planting operations shall be repaired promptly.

C. Replacement of plants during the maintenance period shall be the responsibility of the Contractor, excluding vandalism or damage on the part of others, lighting, or hurricane force winds, until final acceptance.

D. In the event that weeds or other undesirable vegetation become prevalent, it shall be the Contractor's responsibility to remove them.

E. Trees or other plant material which fall or are blown over during the maintenance period will be reset by the Contractor at no additional expense to the Owner, the only exception being hurricane force winds.

3.11 COMPLETION, INSPECTION AND ACCEPTANCE:

A. Completion of the work shall mean the full and exact compliance and conformity with the provisions expressed or implied in the Drawings and in the Specifications, including the complete removal of all trash, debris, soil or other waste created by the Landscape Contractor.

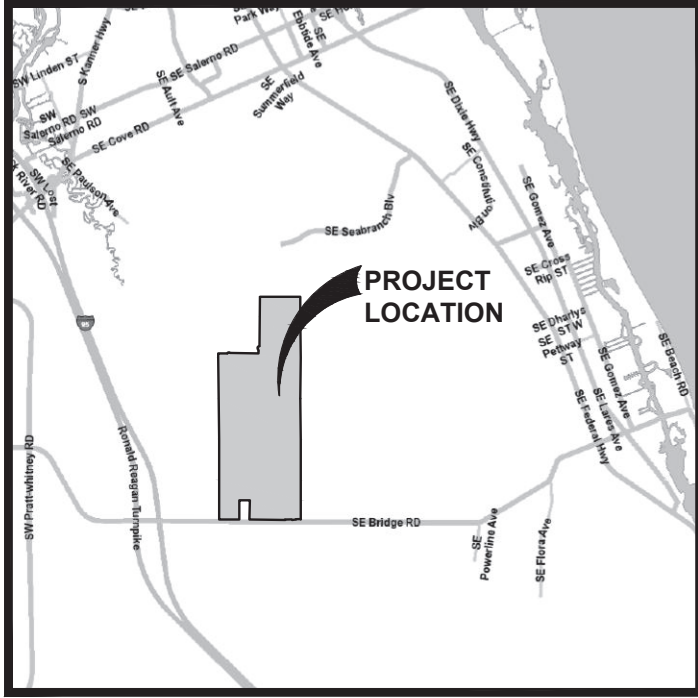
B. Inspection of work to determine completion of contract, exclusive of the possible replacement of plants, will be made by the Owner and/or Landscape Architect at the conclusion of all planting and at the request of the Landscape Contractor.

C. All plant material shall be alive and in good growing condition for each specified kind of plant at the time of acceptance. The rating of each plant according to Florida Grades and Standards shall be equal to or better than that called for on the plans and in these Specifications at the time of final inspection and acceptance.

D. After inspection, the Landscape Contractor will be notified by the Owner of the acceptance of all plant material and workmanship, exclusive of the possible replacement of plants subject to guarantee.

E. All trees & shrubs shall be straight and in correct position per the landscape plans, details and specifications. All nursery, shipping and identification tags & ribbons shall be removed from trees & shrubs immediately after planting.

## Key / Location:



## Project Team:

**Land Owner**  
Becker B-14 Grove, LTD.  
1701 S R-A-1A, Suite 204  
Vero Beach, FL 32963

**Developer**  
Dispersal Land Company

**Land Planning**  
Via Landscape Architecture / Planning  
181 Third Street, Suite 100  
San Rafael, CA 94901

Lucido and Associates, Inc.  
701 East Ocean Blvd.  
Stuart, FL 34994

**Golf Course Design**  
Fazio Golf Course Designers, Inc.  
17755 SE Federal Highway  
Tequesta, FL 34996

**Civil Engineer / Survey**  
Velcon Engineering & Surveying, Inc.  
590 Peacock Blvd.  
Port St. Lucie, FL 34986

**Traffic Engineer**  
O'Rourke Engineering and Planning  
22 SE Seminole Street  
Stuart, FL 34994

**Environmental**  
EWI Consultants, Inc.  
1000 SE Monterey Commons Blvd., Suite 208  
Stuart, FL 34996

# Discovery

## Phase 3b

## Martin County, Florida

## Landscape Specifications

[illegible]

Designer SAW Sheet  
 Manager M.C.  
 Project Number 21-540  
 Municipal Number ---  
 Computer File Discovery Phase 3B La Plans.dwg

**LA7**