

FY 2024
3rd Quarter Report

APRIL - MAY – JUNE 2024

JULY 29, 2024



GOLDEN GATE

HOBE SOUND

JENSEN BEACH

OLD PALM CITY

PORT SALERNO

RIO





GOLDEN GATE



Septic to Sewer
65% connected



Unpaved Roads



El Camino Trail
Bid Opening



GOLDEN GATE

HOBE SOUND

JENSEN BEACH

OLD PALM CITY

PORT SALERNO

RIO





Septic to Sewer

DATE IN SERVICE	July 2024
TOTAL PARCELS	775
PARCELS CONNECTED	502
PENDING CONNECTION	58
PERCENTAGE	65%



GOLDEN GATE

HOBE SOUND

JENSEN BEACH

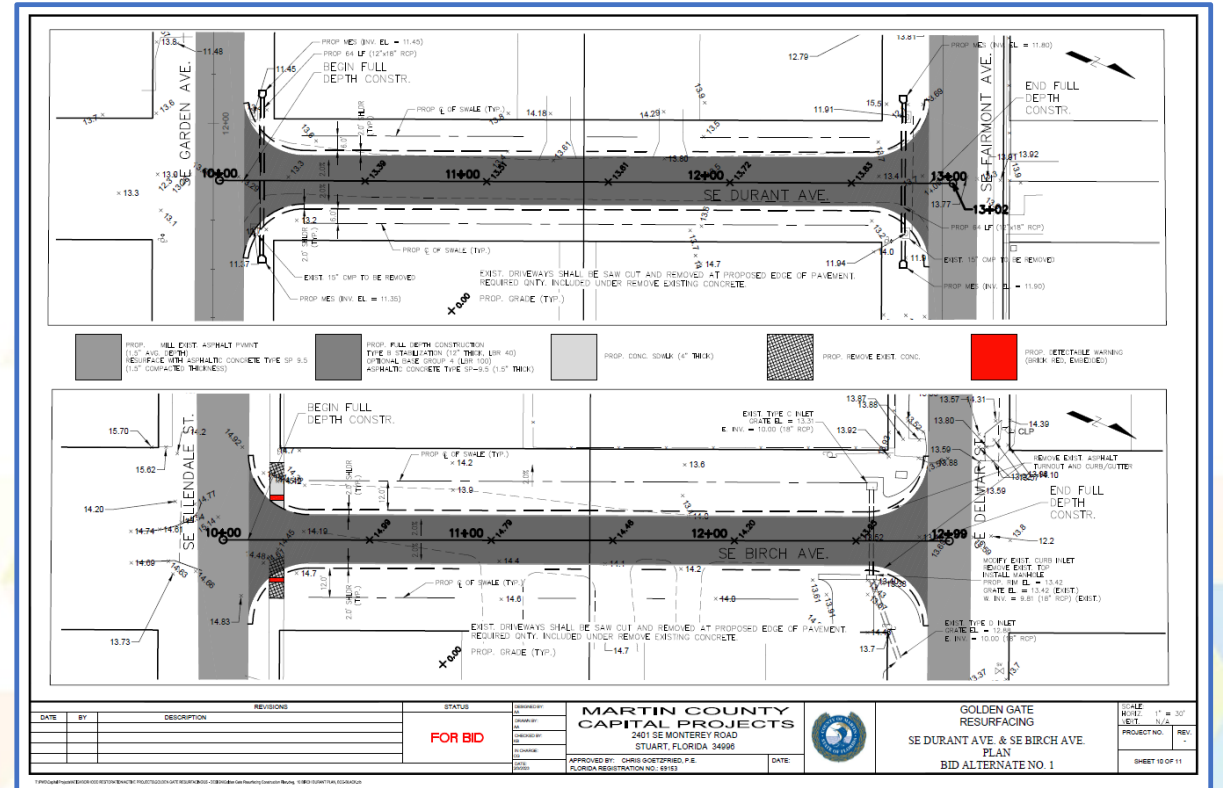
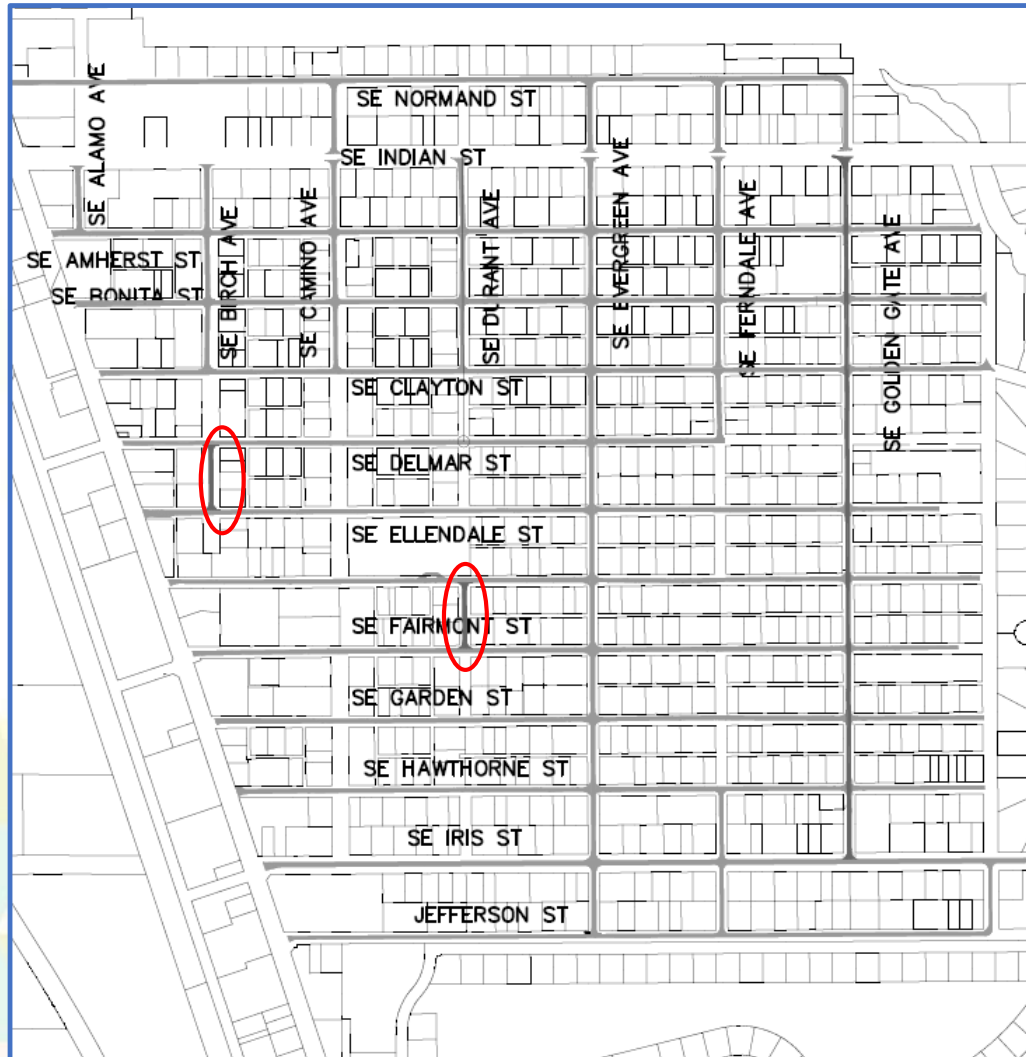
OLD PALM CITY

PORT SALERNO

RIO



Unpaved Roadways



GOLDEN GATE

HOBE SOUND

JENSEN BEACH

OLD PALM CITY

PORT SALERNO

RIO





El Camino

Revised Concept



BID OPENING
June 12, 2024



GOLDEN GATE

HOBE SOUND

JENSEN BEACH

OLD PALM CITY

PORT SALERNO

RIO



HOBE SOUND



Sound Brewing
Under Construction



Train Station Relocation
ROW abandoned, FLUM, Zoning assigned, BOCC, LPA approvals
Shelter secured



SE Woillard Ave Planting
Project completed 6/5/2024
Plants will mature with time and fill out the space



GOLDEN GATE

HOBE SOUND

JENSEN BEACH

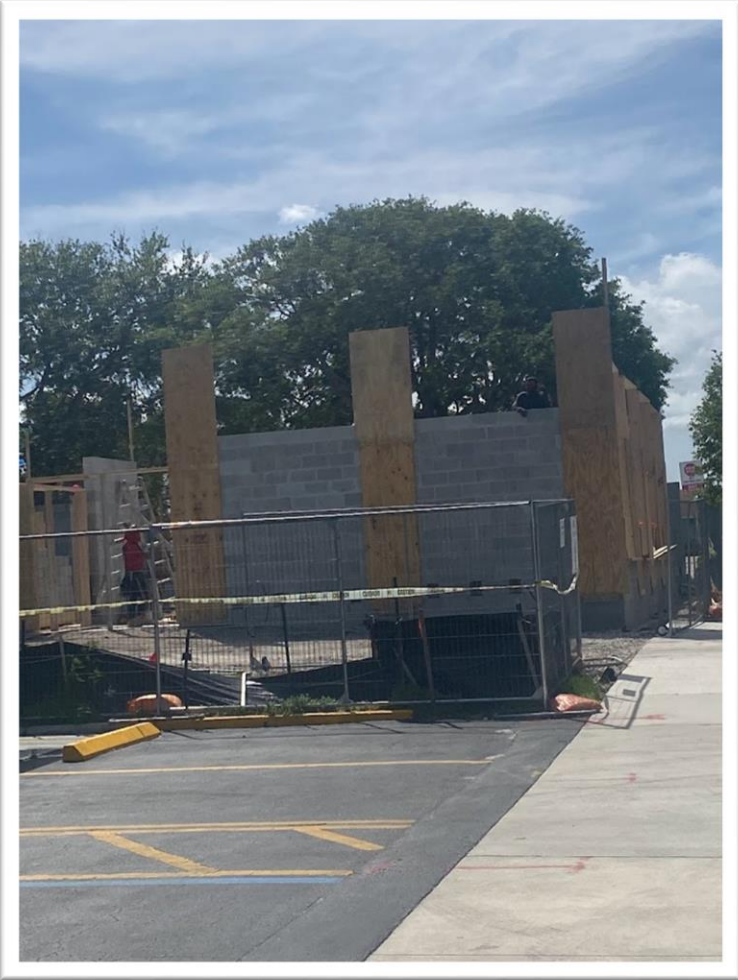
OLD PALM CITY

PORT SALERNO

RIO



Sound Brewing – Public Private Partnership



GOLDEN GATE

HOBE SOUND

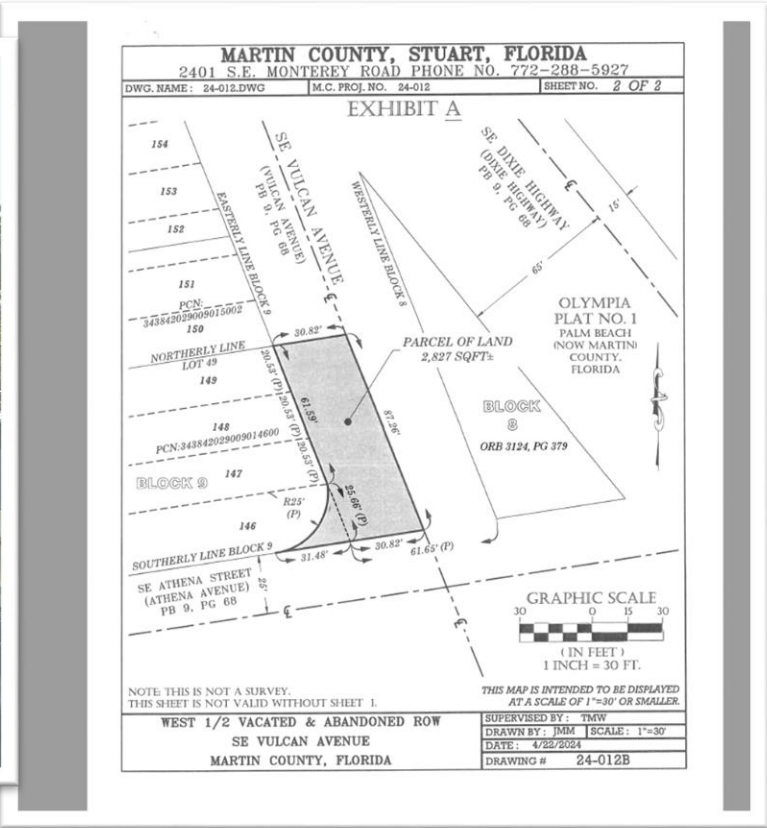
JENSEN BEACH
RIO

OLD PALM CITY

PORT SALERNO



The Historic Hobe Sound Train Station



GOLDEN GATE

HOBE SOUND

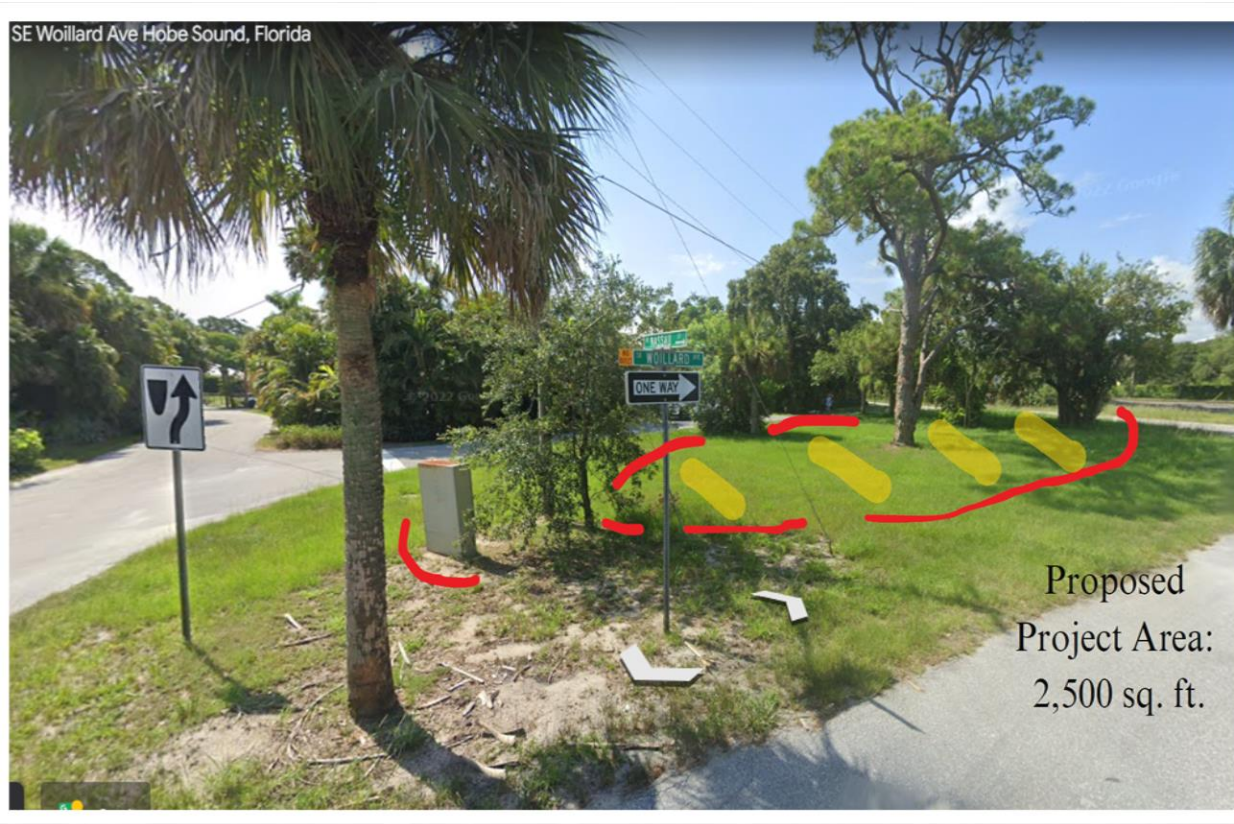
JENSEN BEACH
 RIO

OLD PALM CITY

PORT SALERNO



SE Woillard Ave Planting Project Complete



GOLDEN GATE

HOBE SOUND

JENSEN BEACH
RIO

OLD PALM CITY

PORT SALERNO



MARTIN COUNTY
Community Redevelopment Agency

JENSEN BEACH



Jensen Beach Blvd Resurfacing

FDOT Project in partnership with Martin County

100% plans and pre-construction meeting scheduled



CRA Investment Program

1930 NE Jensen Beach Boulevard



GOLDEN GATE

HOBE SOUND

JENSEN BEACH

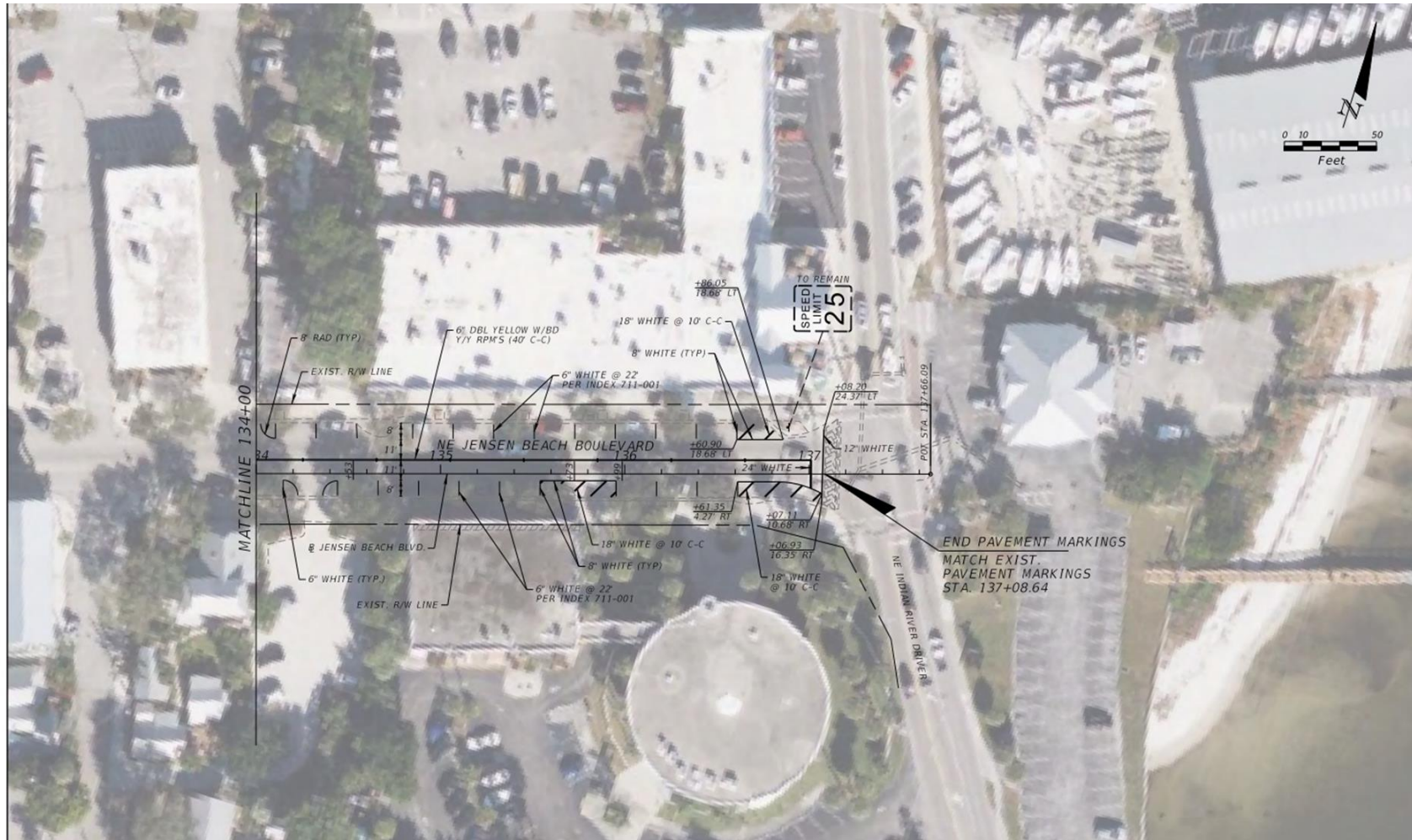
OLD PALM CITY

PORT SALERNO

RIO



Jensen Beach Blvd. Resurfacing



GOLDEN GATE

HOBE SOUND

JENSEN BEACH
RIO

OLD PALM CITY

PORT SALERNO



CRA Investment Program Applicant #010

Project Complete 6-20-24



GOLDEN GATE

HOBE SOUND

JENSEN BEACH
RIO

OLD PALM CITY

PORT SALERNO





PORT SALERNO



New Monrovia Neighborhood Improvements

Received engineer's design proposal



New Monrovia Park

Engineer's design underway



Mooring Field Upland Facility

Architectural design completed

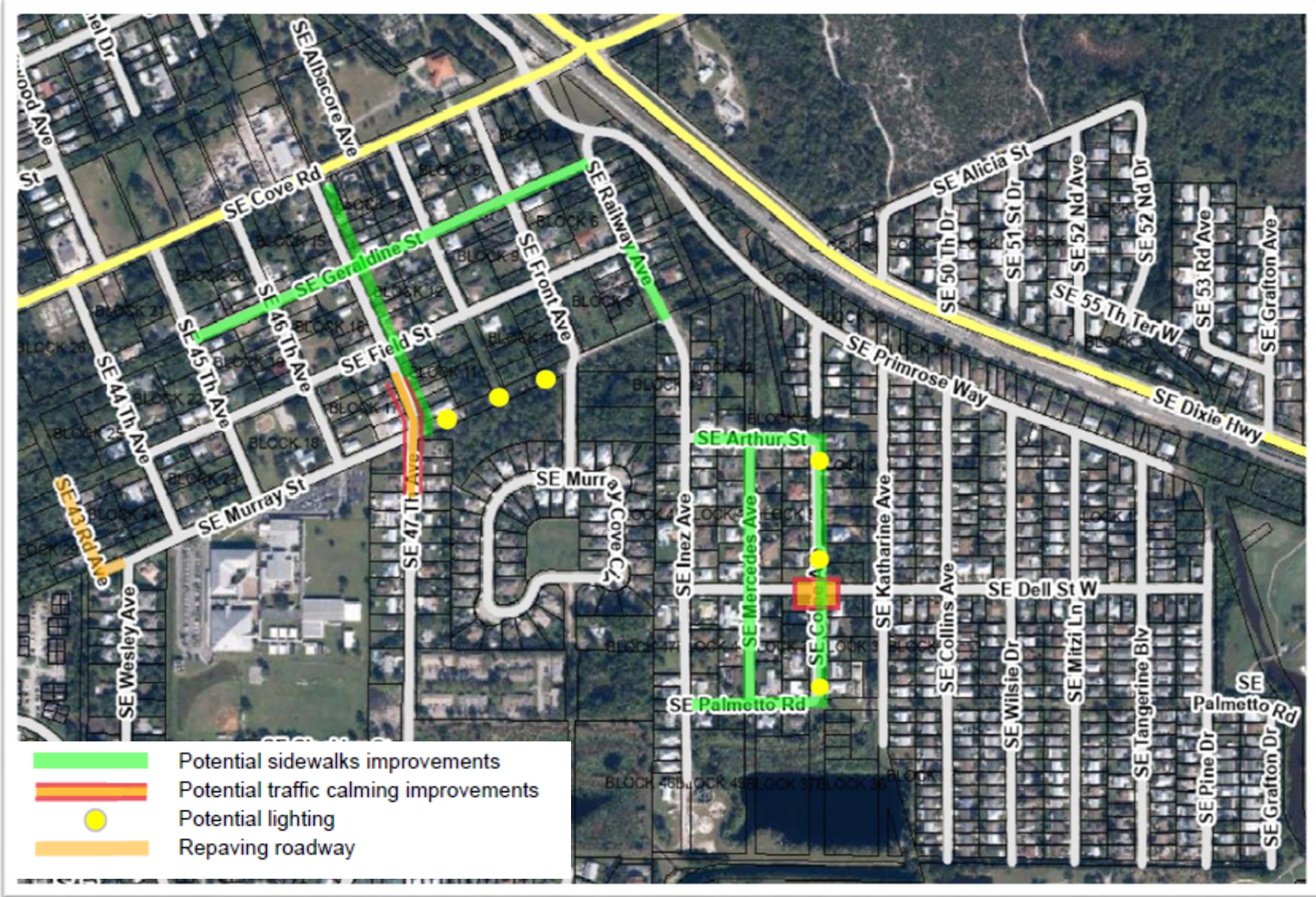


Signage

New Monrovia signage installed



New Monrovia Neighborhood



GOLDEN GATE

HOBE SOUND

JENSEN BEACH

OLD PALM CITY

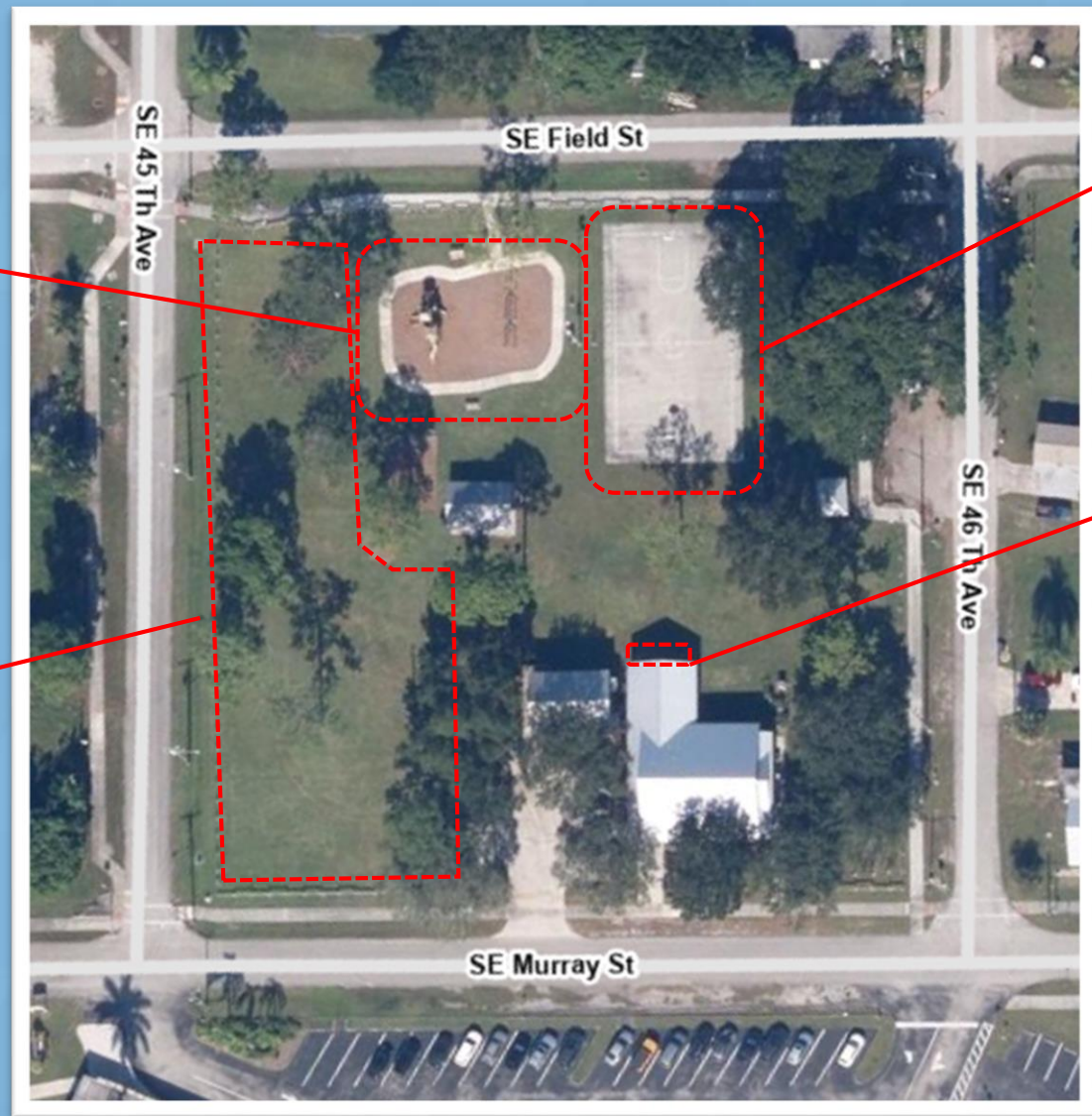
PORT SALERNO

RIO





New Monrovia Park



Playground
• Add shade structure

Replace basketball court
• Wider
• 6 hoops

Grounds
• Level the area

Pavilion
• Extend concrete



GOLDEN GATE

HOBE SOUND

JENSEN BEACH

OLD PALM CITY

PORT SALERNO

RIO





Mooring Field Upland Facility



GOLDEN GATE

HOBE SOUND

JENSEN BEACH

OLD PALM CITY

PORT SALERNO

RIO

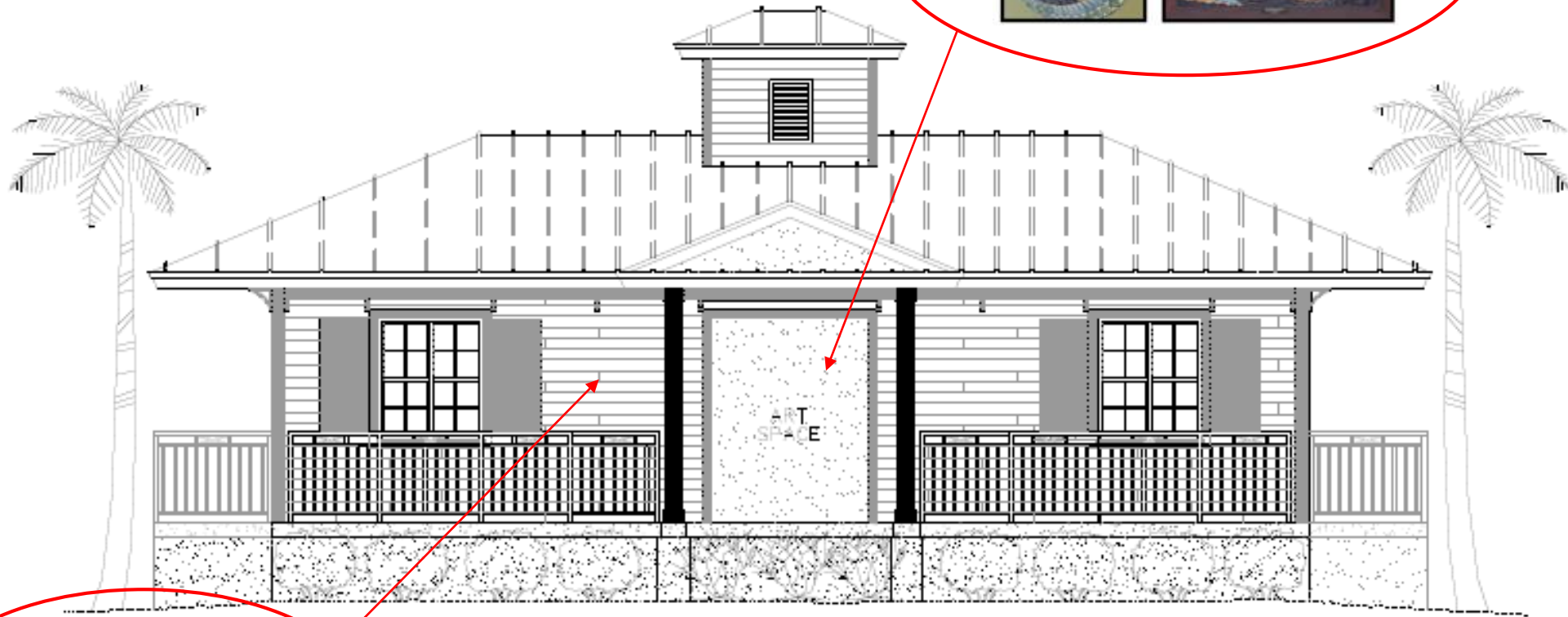




Design

Artwork Type

Mosaic



FRONT ELEVATION (FACING STREET)

SCALE: 1/4" = 1'-0"



GOLDEN GATE

HOBE SOUND

JENSEN BEACH

OLD PALM CITY

PORT SALERNO

RIO





New Monrovia Signage



GOLDEN GATE

HOBE SOUND

JENSEN BEACH

OLD PALM CITY

PORT SALERNO

RIO





OLD PALM CITY



Palm City Place
Ribbon Cutting June 1st



Ripple Stormwater Eco-Art Project
Nominated for a
Keep Martin Beautiful
Environmental Stewardship Award



GOLDEN GATE

HOBE SOUND

JENSEN BEACH

OLD PALM CITY

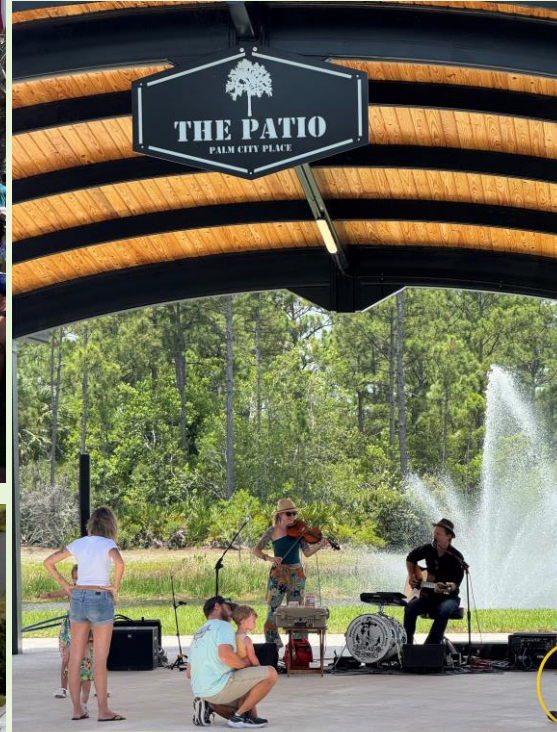
PORT SALERNO

RIO





The Patio at Palm City Place





RIO



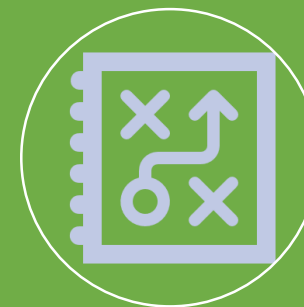
Pocket Park
Concept Design
Complete



Infill Sewer
Working on
easements with
privately
maintained roads



Bioswale Rehab
100% Complete



Crosswalks
Working with
property owner on
an easement



GOLDEN GATE

HOBE SOUND

JENSEN BEACH

OLD PALM CITY

PORT SALERNO

RIO





Pocket Park

Rio Pocket Park

SW of Martin Ave Roundabout



- Post and Rail Fence —
- Chain with a lock —
- Sand Live Oak ★
- Southern Cedar ★
- Privacy Hedge (maybe cocoplum)
- Boulders ▶

*Re-sod the entire lot with the appropriate soil





Biosawale

BEFORE



AFTER



GOLDEN GATE

HOBE SOUND

JENSEN BEACH

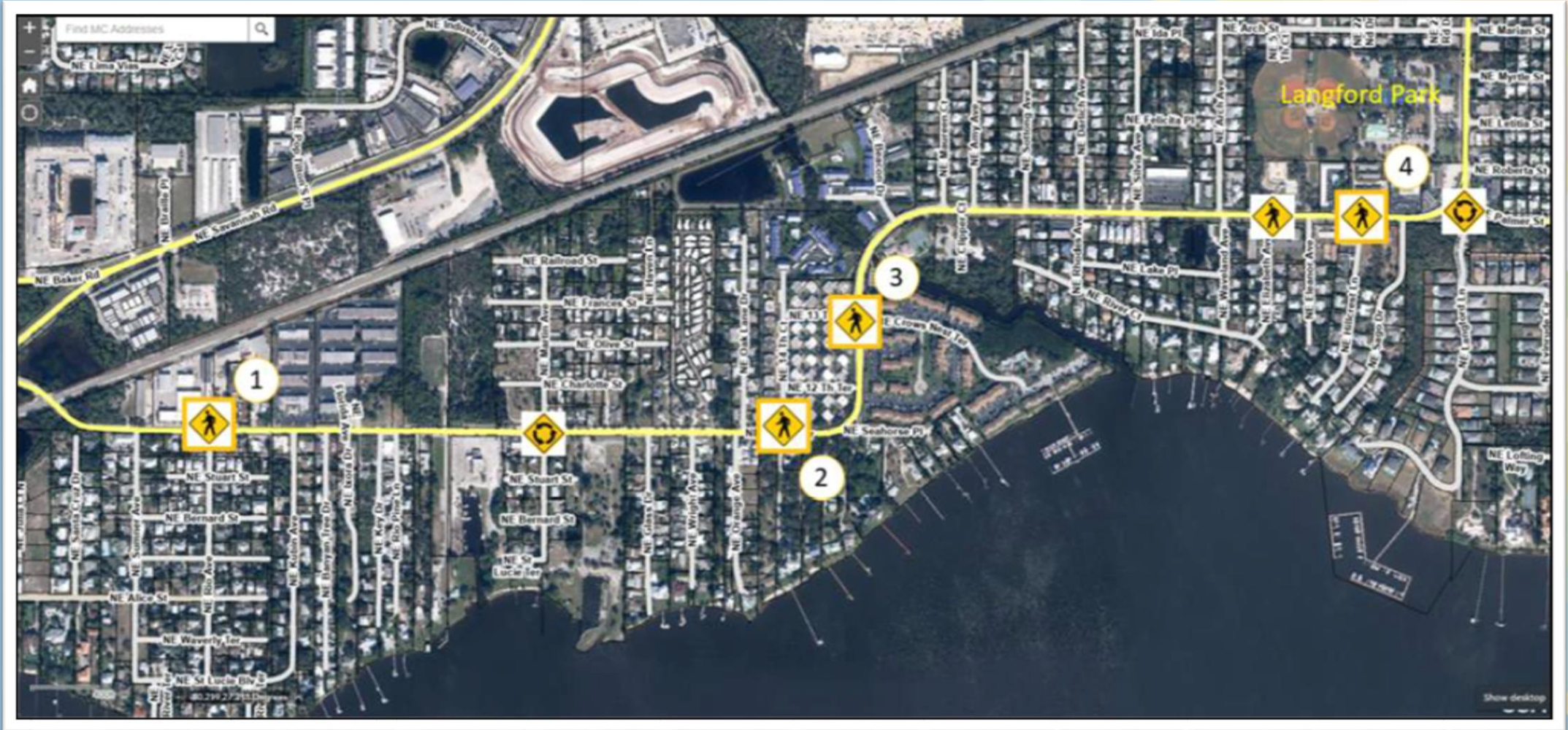
OLD PALM CITY

PORT SALERNO

RIO



Dixie Highway Crosswalks



GOLDEN GATE

HOBE SOUND

JENSEN BEACH

OLD PALM CITY

PORT SALERNO

RIO





CRA WIDE



Public Records

New Training
New Emails



Design Standards

Design Sessions
April 2nd
May 7th



Martin Cares

3 Sessions



FL Redevelopment Ass. Award Applications

Ripple Stormwater
EcoArt Project
FY 2023 Annual Report



GOLDEN GATE

HOBE SOUND

JENSEN BEACH

OLD PALM CITY

PORT SALERNO

RIO



Public Records Training Boards and Committees

Public Records Requests

- Once a public records request is received, the Public Records Division will assign the PRR to the applicable department(s).
- Department liaisons will reach out to you as the contact for the Board
- Board contacts will contact each Board member forwarding a copy of the request and PEC Form, with instructions on searching their files, email accounts, electronic devices, social media pages, etc., gathering all responsive records and turning them over to the County as instructed in Section 4 of the SOP. If they have no responsive records, they should respond to let you know.
- Any new records received are to be saved to the department's file and a copy saved to the PRR file if they are responsive.
- Once the completed PEC Forms (and records, if any) have been received from all Board Members and all responsive records are saved to the PRR file, notify your Department liaison on whether you have records and the time for production, or update RFS if you are also the Public Records Department Liaison.
- **NOTE** - we do not need a production time from Board or Committee members as they are volunteers, and we cannot charge for their time.
- You can use a chart like the one attached to keep track.



Design Standards

On-going meetings and revisions

REG/GMD/Legal/CRA Peer Review #2	July 23 Growth Management Conference Room					
NAC Presentations Input/Approval	Golden Gate	Old Palm City	Jensen Beach	Hobe Sound	Rio	Port Salerno
	August 5*	August 26*	September 4*	September 11*	September 26*	October 10*
CRA Presentation Approval	October 28* Commission Chambers					
LPA Presentation Approval	November 7* Commission Chambers					
BOCC Presentation Approval	November 12* Commission Chambers					



GOLDEN GATE

HOBE SOUND

JENSEN BEACH

OLD PALM CITY

PORT SALERNO

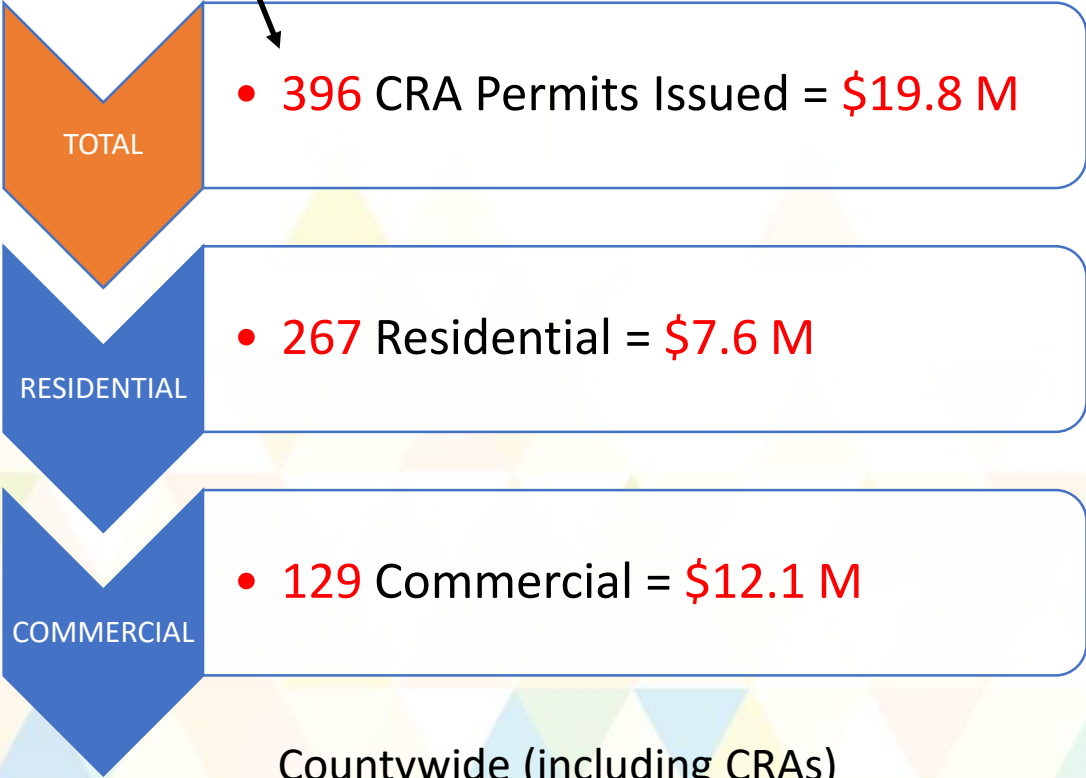
RIO



Permit Overview

7.9%

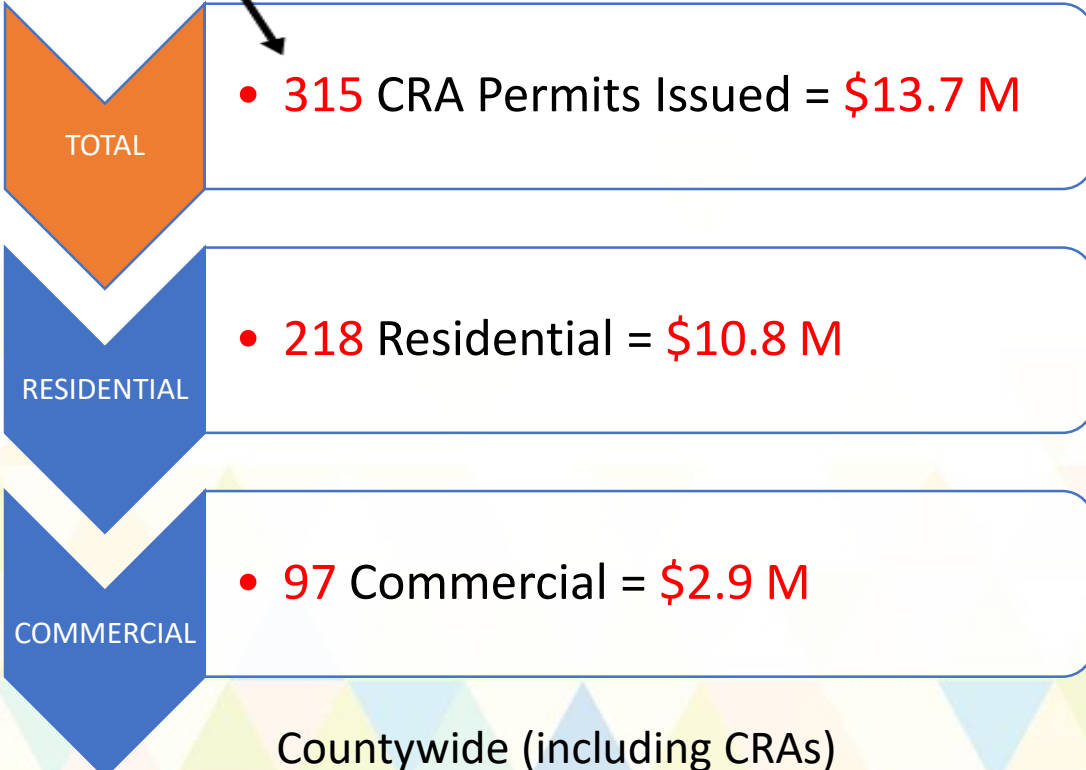
3rd Quarter 2023



Countywide (including CRAs)
Permit Totals: 5,006

6.3%

3rd Quarter 2024



Countywide (including CRAs)
Permit Totals: 5,006



GOLDEN GATE

HOBE SOUND

JENSEN BEACH

OLD PALM CITY

PORT SALERNO

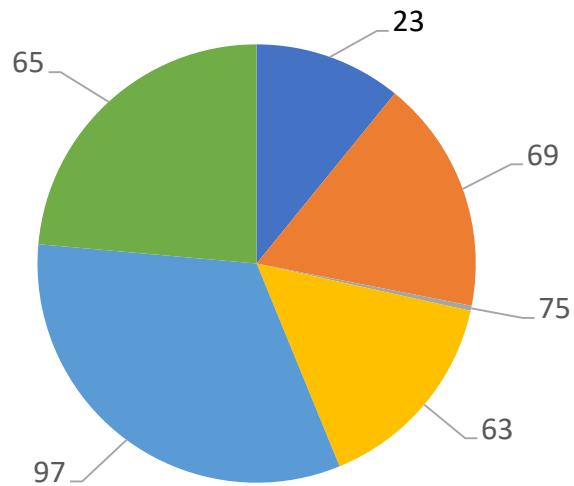
RIO



3rd Quarter 2023

Residential

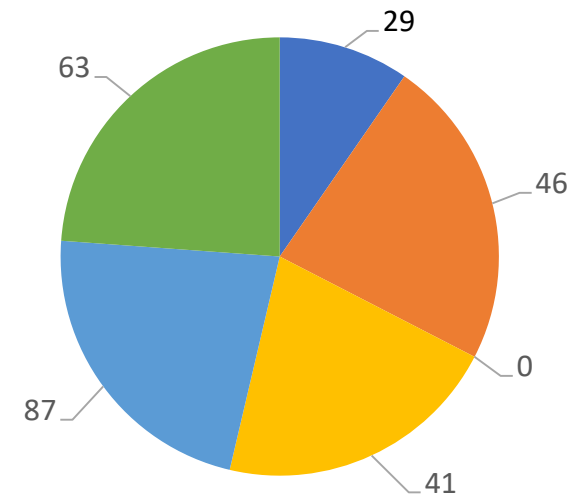
- Golden Gate
- Hobe Sound
- Jensen Beach
- Old Palm City
- Port Salerno
- Rio



3rd Quarter 2024

Residential

- Golden Gate
- Hobe Sound
- Jensen Beach
- Old Palm City
- Port Salerno
- Rio

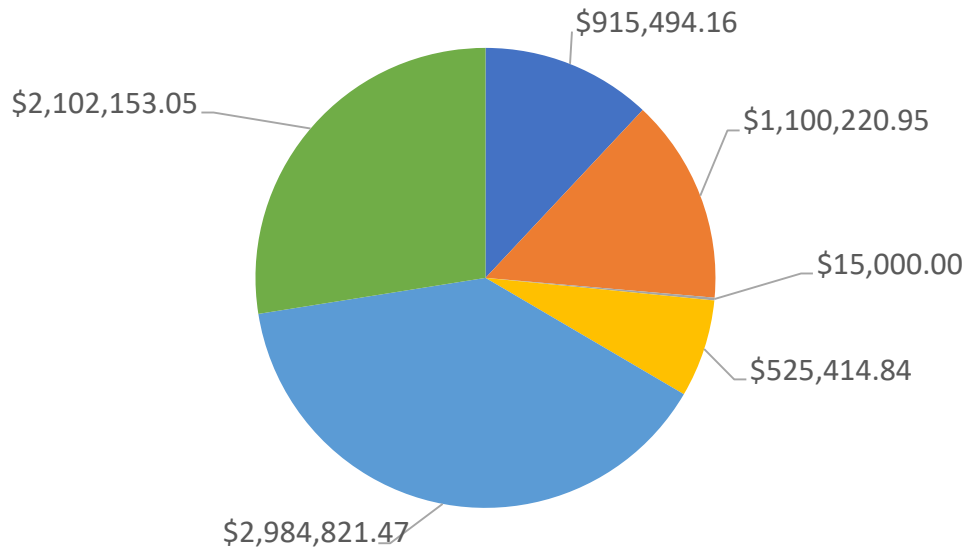


Residential Valuation

3rd Quarter 2023

Residential

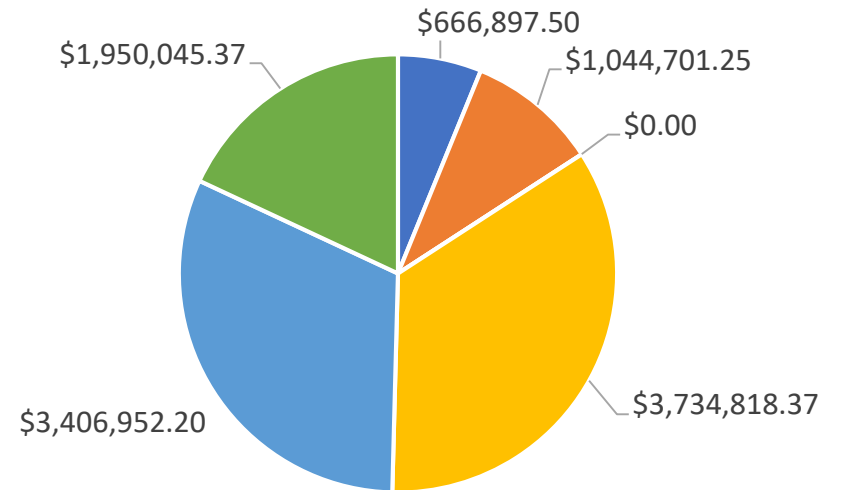
- Golden Gate ■ Hobe Sound ■ Jensen Beach
- Old Palm City ■ Port Salerno ■ Rio



3rd Quarter 2024

Residential

- Golden Gate ■ Hobe Sound ■ Jensen Beach
- Old Palm City ■ Port Salerno ■ Rio



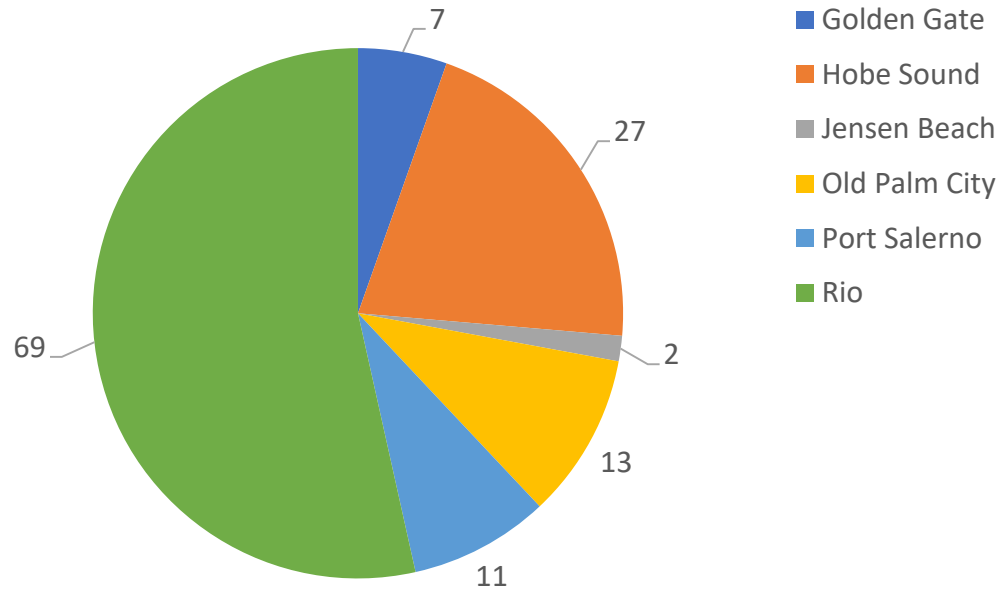
OPC 7 single family homes SW 35th St. \$466K each



Commercial Permits

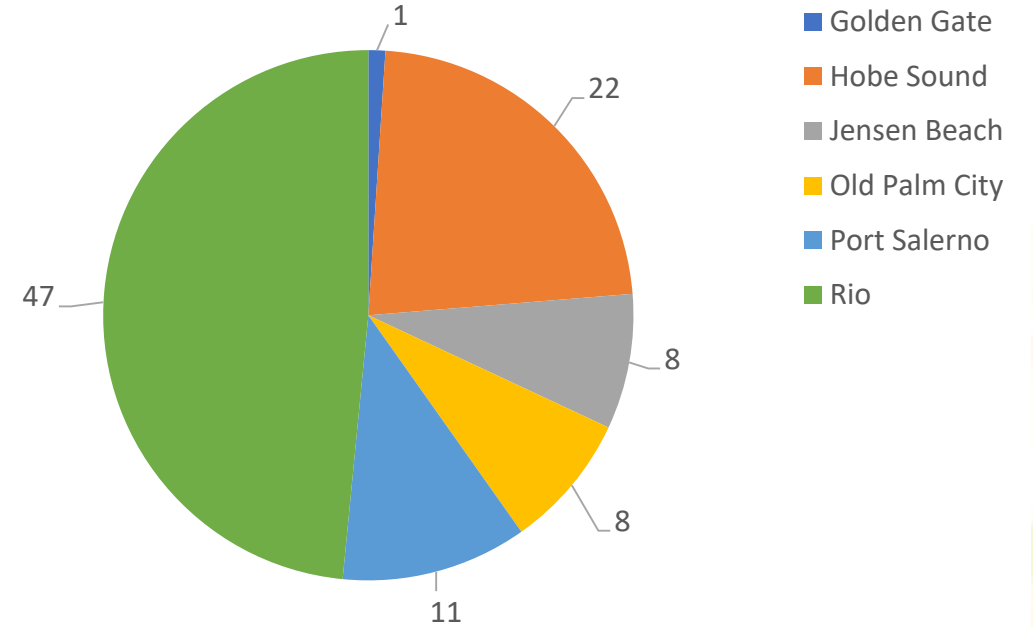
3rd Quarter 2023

Commercial



3rd Quarter 2024

Commercial



GOLDEN GATE

HOBE SOUND

JENSEN BEACH

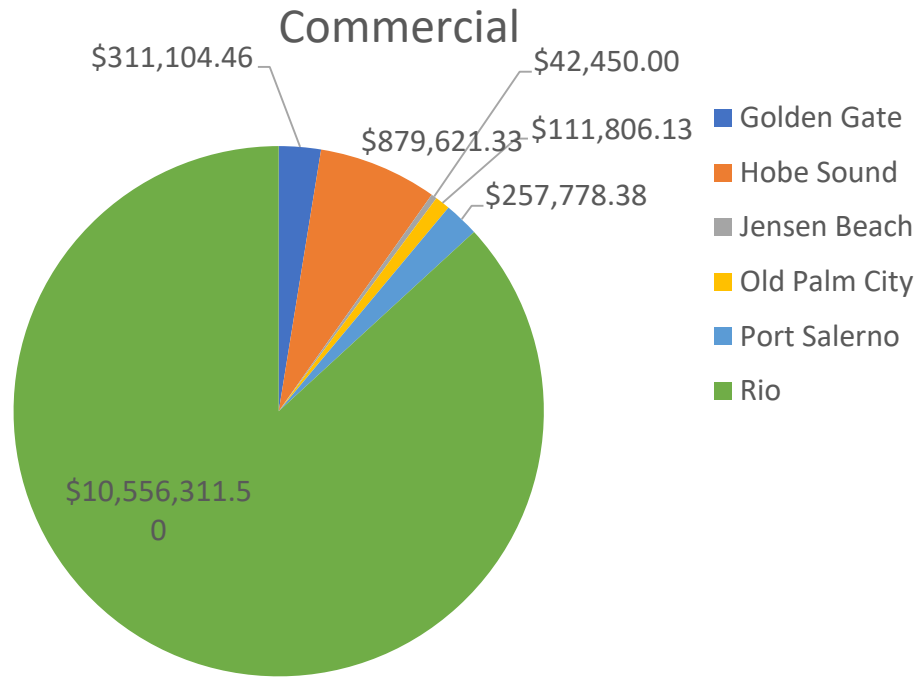
OLD PALM CITY

PORT SALERNO

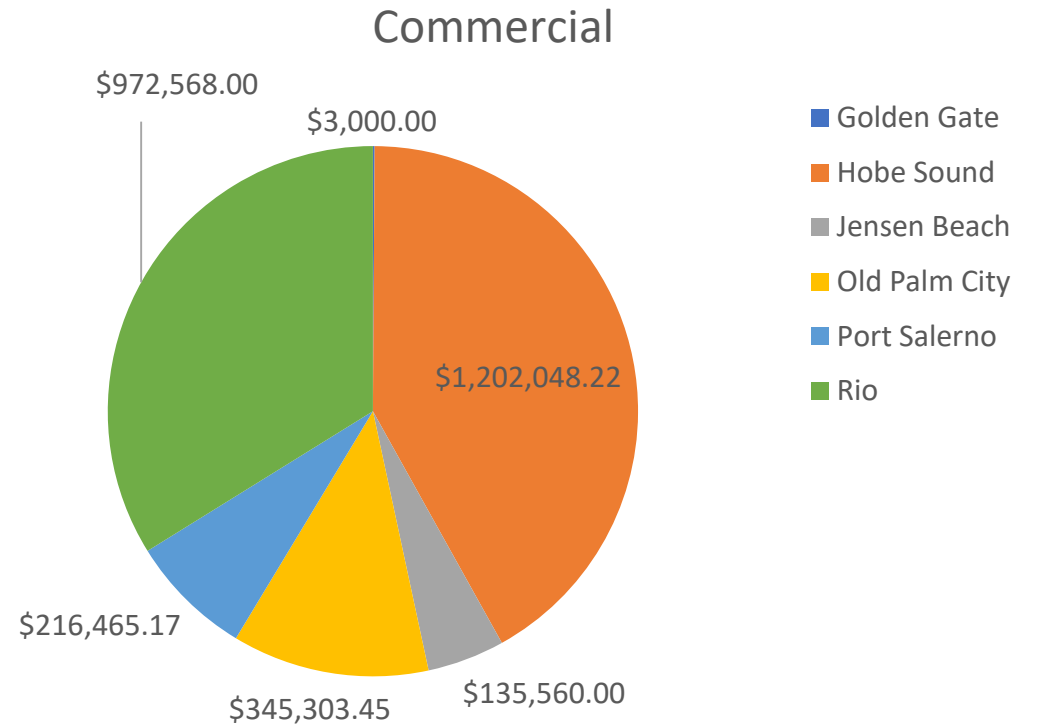
RIO



3rd Quarter 2023



3rd Quarter 2024



HS Library addition/remodel \$525,000



GOLDEN GATE

HOBE SOUND

JENSEN BEACH

OLD PALM CITY

PORT SALERNO

RIO



KEEP UP WITH US!

CRA Map:

Martin.fl.us/CRAMap

CRA
Projects:

Martin.fl.us/CRAOWLProjects



@MartinCountyBoardofCountyCommissioners



@MartinCountyGov



@MartinCountyFlorida

SCAN HERE
TO LEARN MORE!



GOLDEN GATE

HOBE SOUND

JENSEN BEACH

OLD PALM CITY

PORT SALERNO

RIO



Contact Us!

Office of Community Development
Building Community

772-463-3253

or

CRA@MARTIN.FL.US



GOLDEN GATE

HOBE SOUND

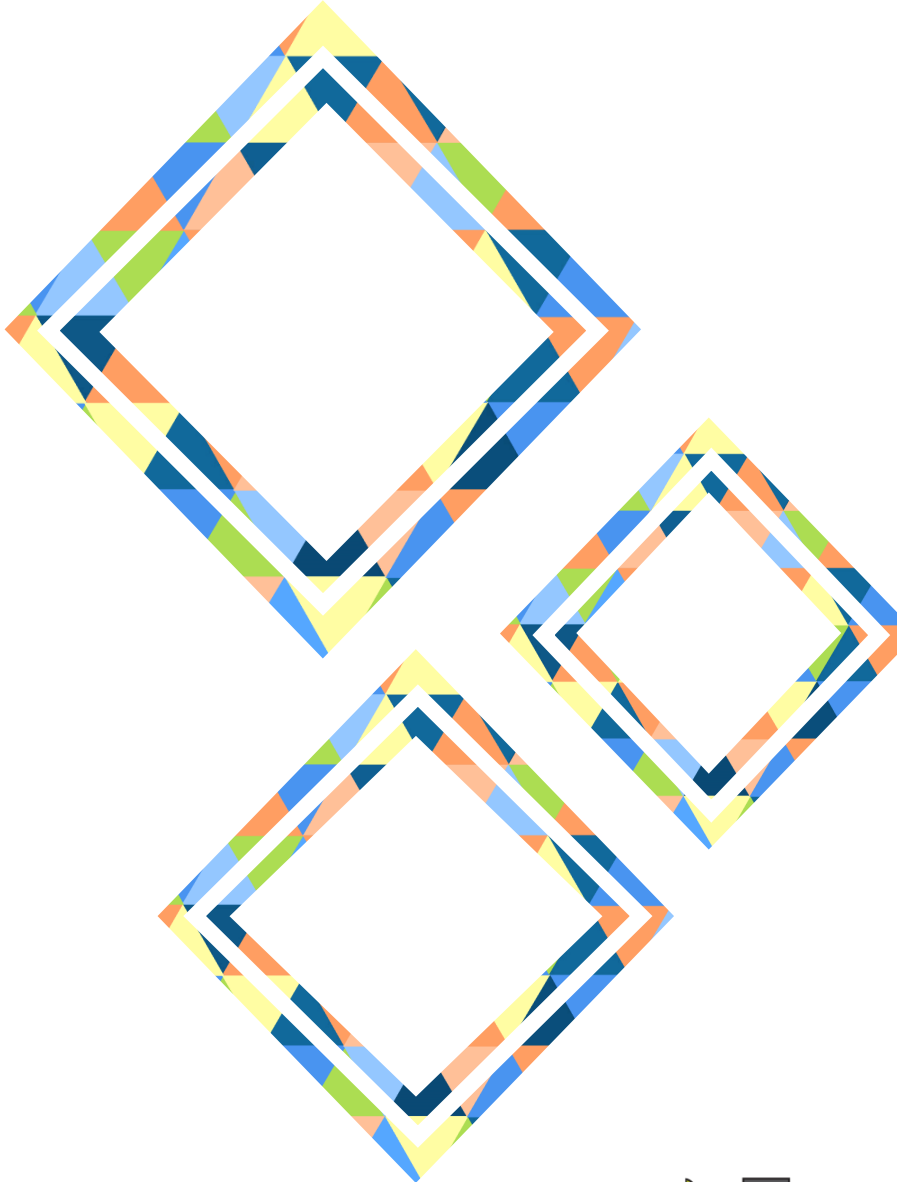
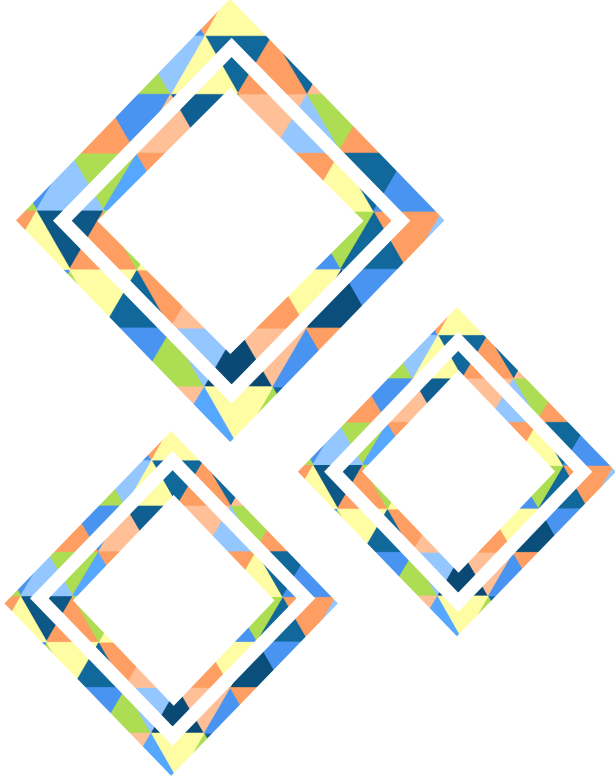
JENSEN BEACH

OLD PALM CITY

PORT SALERNO

RIO





Thank you!

ANY QUESTIONS?



GOLDEN GATE

HOBE SOUND

JENSEN BEACH

OLD PALM CITY

PORT SALERNO

RIO



MARTIN COUNTY
Community Redevelopment Agency