

# EXHIBIT "A"

## LEGAL DESCRIPTION

A PARCEL OF LAND FOR UTILITY EASEMENT LYING IN A PORTION OF SECTION 10, TOWNSHIP 38 SOUTH, RANGE 41 EAST, MARTIN COUNTY, FLORIDA, SAID PARCEL OF LAND FOR UTILITY EASEMENT BEING MORE PARTICULARLY DESCRIBED AS FOLLOWS:

**COMMENCING** AT THE SOUTHWEST CORNER OF SAID SECTION 10; THENCE SOUTH 89°52'43" EAST ALONG THE SOUTH LINE OF SAID SECTION 10, A DISTANCE OF 3441.57 FEET; THENCE NORTH 00°07'17" EAST, A DISTANCE OF 103.28 FEET TO A POINT ON THE SOUTHERLY LINE OF THE STUART JET CENTER WESTERLY LEASE PARCEL; THENCE NORTH 64°46'26" WEST ALONG THE SAID SOUTHERLY LINE OF THE STUART JET CENTER WESTERLY LEASE PARCEL, A DISTANCE OF 240.87 FEET; THENCE BEARING NORTH 25°13'34" EAST, A DISTANCE OF 12.54 FEET TO THE **POINT OF BEGINNING**; THENCE BEARING NORTH 73°23'59" WEST, A DISTANCE OF 575.09 FEET; THENCE BEARING NORTH 16°36'01" EAST, A DISTANCE OF 20.00 FEET; THENCE BEARING SOUTH 73°23'59" EAST, A DISTANCE OF 545.47 FEET; THENCE BEARING NORTH 25°13'34" EAST, A DISTANCE OF 403.64 FEET; THENCE BEARING 73°23'59" EAST, A DISTANCE OF 145.59 FEET; THENCE BEARING NORTH 25°13'34" EAST, A DISTANCE OF 19.10 FEET; THENCE BEARING SOUTH 64°46'26" EAST, A DISTANCE OF 10.00 FEET; THENCE BEARING SOUTH 25°13'34" WEST, A DISTANCE OF 23.62 FEET; THENCE BEARING SOUTH 73°23'59" WEST, A DISTANCE OF 145.72 FEET; THENCE BEARING SOUTH 25°13'34" WEST, A DISTANCE OF 397.39 FEET; THENCE BEARING SOUTH 73°23'59" EAST, A DISTANCE OF 19.50 FEET; THENCE BEARING SOUTH 16°36'01" WEST, A DISTANCE OF 20.00 FEET TO THE **POINT OF BEGINNING**.

SAID UTILITY EASEMENT CONTAINING WITHIN SAID BOUNDS 17,168 SQUARE FEET (0.394 ACRES) MORE OR LESS.

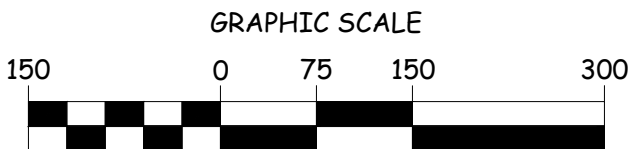
PAGE 1 OF 2 NOT VALID WITHOUT PAGE 2 OF 2

JOB No.:	DRAWN BY:
19-1031	P. SUTHARD
	APPROVED BY:
	R. KEMERSON
	SCALE:
	N/A
SHEET:	DATE:
1 OF 2	2/9/21
FIELD BOOK/PAGES	PCS
N/A	2/16/21
	BY:
	DATE:
	REVISED PER COMMENTS
	REVISIONS


SKETCH AND LEGAL DESCRIPTION  
OF UTILITY EASEMENT  
FOR STUART JET CENTER

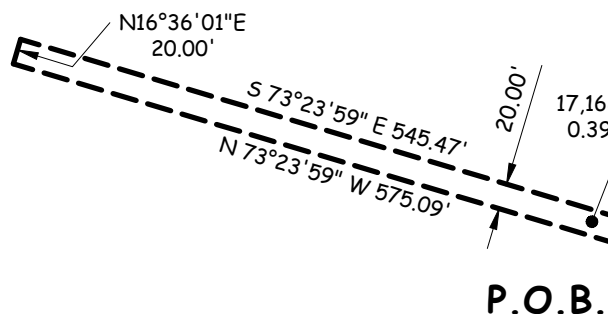


**VELCON ENGINEERING & SURVEYING, LLC**  
 CERTIFICATE OF AUTHORIZATION NO. LB 8206  
 590 NW PEACOCK BLVD, SUITE 8  
 PORT ST. LUCIE, FLORIDA 34986  
 PHONE (772) 879-0477  
 Web Site: www.velconfirm.com

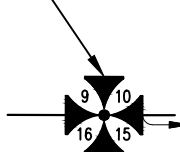


GRAPHIC SCALE  
(SCALE IN FEET)  
1" = 150'

OWNER: MARTIN COUNTY  
PCN: 103841000001000109  
(LEASE PER ORB 1068, PG 750)



P.O.C.  
S.W. COR. SEC. 10  
TWP. 38 S./RGE. 41 E.



SOUTH LINE OF SEC. 10  
TWP. 38 S./RGE. 41 E.  
(BASIS OF BEARINGS)  
S 89°52'43" E 3441.57'

**SKETCH OF DESCRIPTION**

BEARINGS SHOWN HEREON ARE REFERENCED TO THE SOUTH LINE OF SECTION 10, TOWNSHIP 38 SOUTH, RANGE 41 EAST, HAVING A ASSUMED BEARING OF S 89°52'43" E, ALL OTHER BEARINGS ARE RELATIVE THERETO.

NOT VALID WITHOUT THE SIGNATURE AND ORIGINAL RAISED SEAL OF A FLORIDA LICENSED SURVEYOR AND MAPPER

NOT VALID WITHOUT PAGE 1 OF 2

THIS IS NOT A BOUNDARY SURVEY.

THIS DOCUMENT MAY BE REPRODUCED UPON REQUEST IN AN ALTERNATIVE FORMAT BY CONTACTING THE COUNTY ADA COORDINATOR (772)320-3131, THE COUNTY ADMINISTRATION OFFICE (772) 288-5400, FLORIDA RELAY 711, OR BY COMPLETING OUR ACCESSIBILITY FEEDBACK FORM AT WWW.MARTIN.FL.US /ACCESSABILITY-FEEDBACK.

ROBERT F. KEMERSON  
PROFESSIONAL SURVEYOR AND MAPPER  
STATE OF FLORIDA # 6285

**LEGEND**

- COR. = CORNER
- ORB = OFFICIAL RECORD BOOK
- PCN = PARCEL CONTROL NUMBER
- PG = PAGE
- P.O.B. = POINT OF BEGINNING
- P.O.C. = POINT OF COMMENCEMENT
- SEC. = SECTION
- SQ.FT. = SQUARE FEET
- RNG. = RANGE
- TWP. = TOWNSHIP

JOB No.:	19-1031
DRAWN BY:	P. SUTHARD
APPROVED BY:	R. KEMERSON
SCALE:	1" = 150'
DATE:	2/9/21
SHEET:	2 OF 2
FIELD BOOK/PAGES	---

PCS	2/16/21	REVISED PER COMMENTS
BY:	DATE:	REVISIONS

SKETCH AND LEGAL DESCRIPTION  
OF UTILITY EASEMENT  
FOR STUART JET CENTER



VELCON ENGINEERING & SURVEYING, LLC  
CERTIFICATE OF AUTHORIZATION NO. LB 8206  
590 NW PEACOCK BLVD, SUITE 8  
PORT ST. LUCIE, FLORIDA 34986  
PHONE (772) 879-0477  
Web Site: www.velconfll.com