

MARTIN COUNTY
Community Redevelopment Agency

Martin County CRA

LOT MATCH

The Martin County CRA is the matchmaker. The lots are the shy singles. The developers, creatives, entrepreneurs, and small businesses are the potential soulmates.

Lot Match brings them together!

Online “Lot Match” Gallery



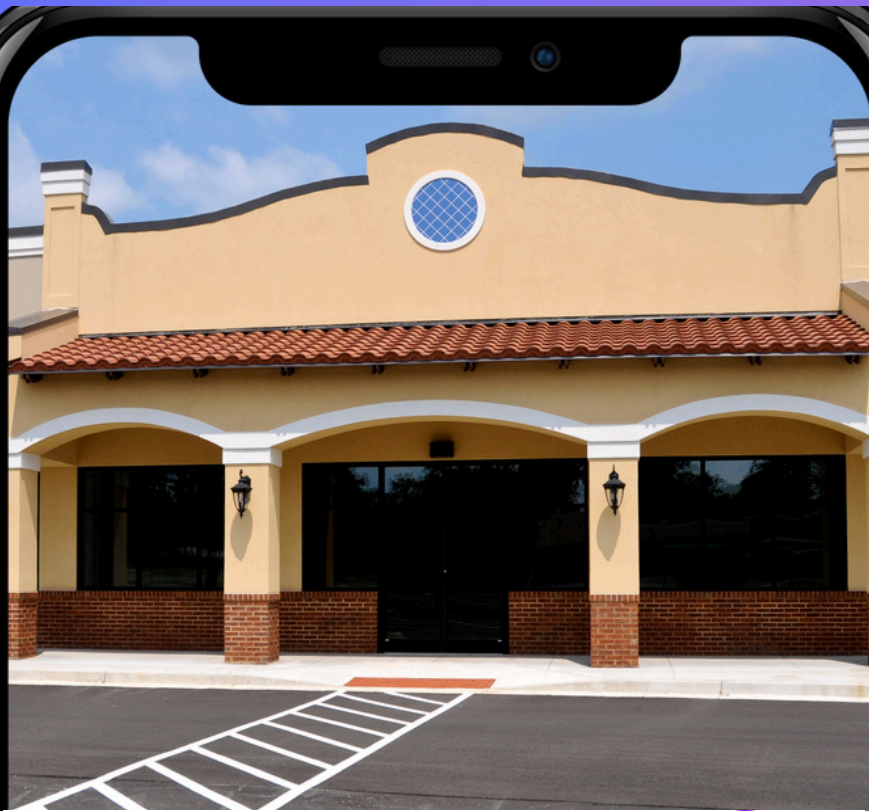
Name: 123 N.E. Dixie Hwy.

About Me: I’m a spacious, 6,400 sq. ft. single-story commercial cutie with plenty of parking, great bones, and endless potential. Sure, I’ve been hanging out solo for a while, but don’t let that fool you – I’m located in a prime spot on Dixie Hwy, perfectly positioned for foot traffic and high visibility. I’m flexible, low-maintenance, and ready to commit to the right match who sees my potential.

Looking For: Mixed-use dreamer with a love for walkability and community.

Things I Like: Foot traffic and friendly neighbors, Someone who loves free parking as much as I do.

Icks: Neglect. Indecision.



123 N.E. Dixie Hwy ✓



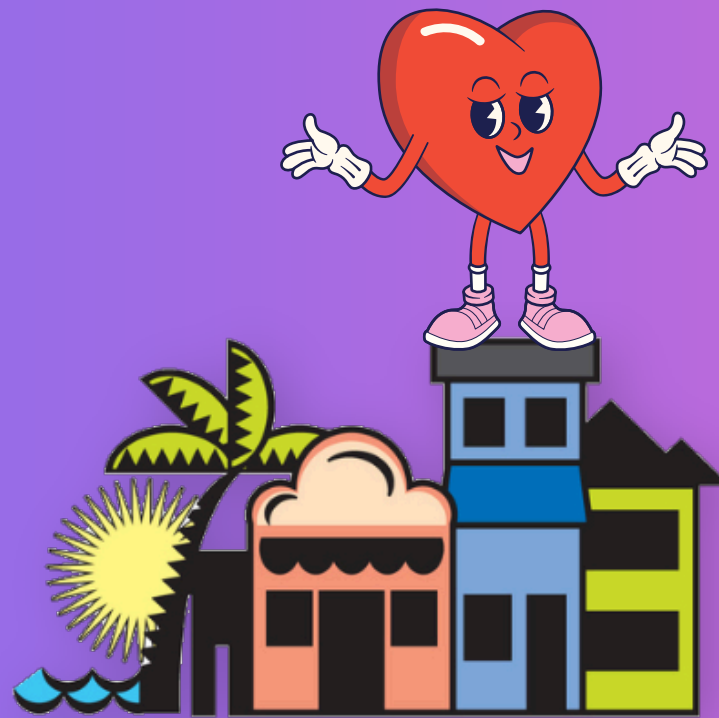
6,400 sq. ft.

Rio CRA, Corridor subdistrict

Looking for **Creative entrepreneurs**

About Me

I'm a classic Spanish-style commercial property with great bones and unbeatable visibility on NE Dixie Hwy. With my arched windows, deep lot, and welcoming frontage, I'm full of charm and ready for a glow-up. Whether you're thinking office, gallery, café, or something completely new—I'm open to possibilities and looking for the right match to bring me back to life.



MARTIN COUNTY
Community Redevelopment Agency



456 N.E. Dixie Hwy ✓



6,682 sq. ft.

Rio CRA, Corridor subdistrict

Looking for **Business dreamers**

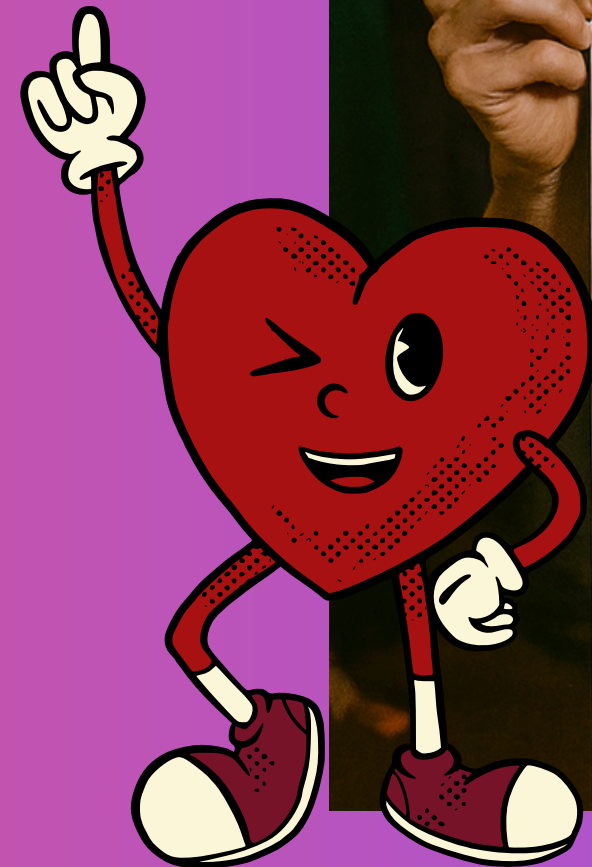
About Me

I'm a spacious, single-story commercial cutie with plenty of parking, great bones, and endless potential. Sure, I've been hanging out solo for a while, but don't let that fool you — I'm located in a prime spot on Dixie Hwy, perfectly positioned for foot traffic and high visibility. I'm flexible, low-maintenance, and ready to commit to the right match who sees my potential.

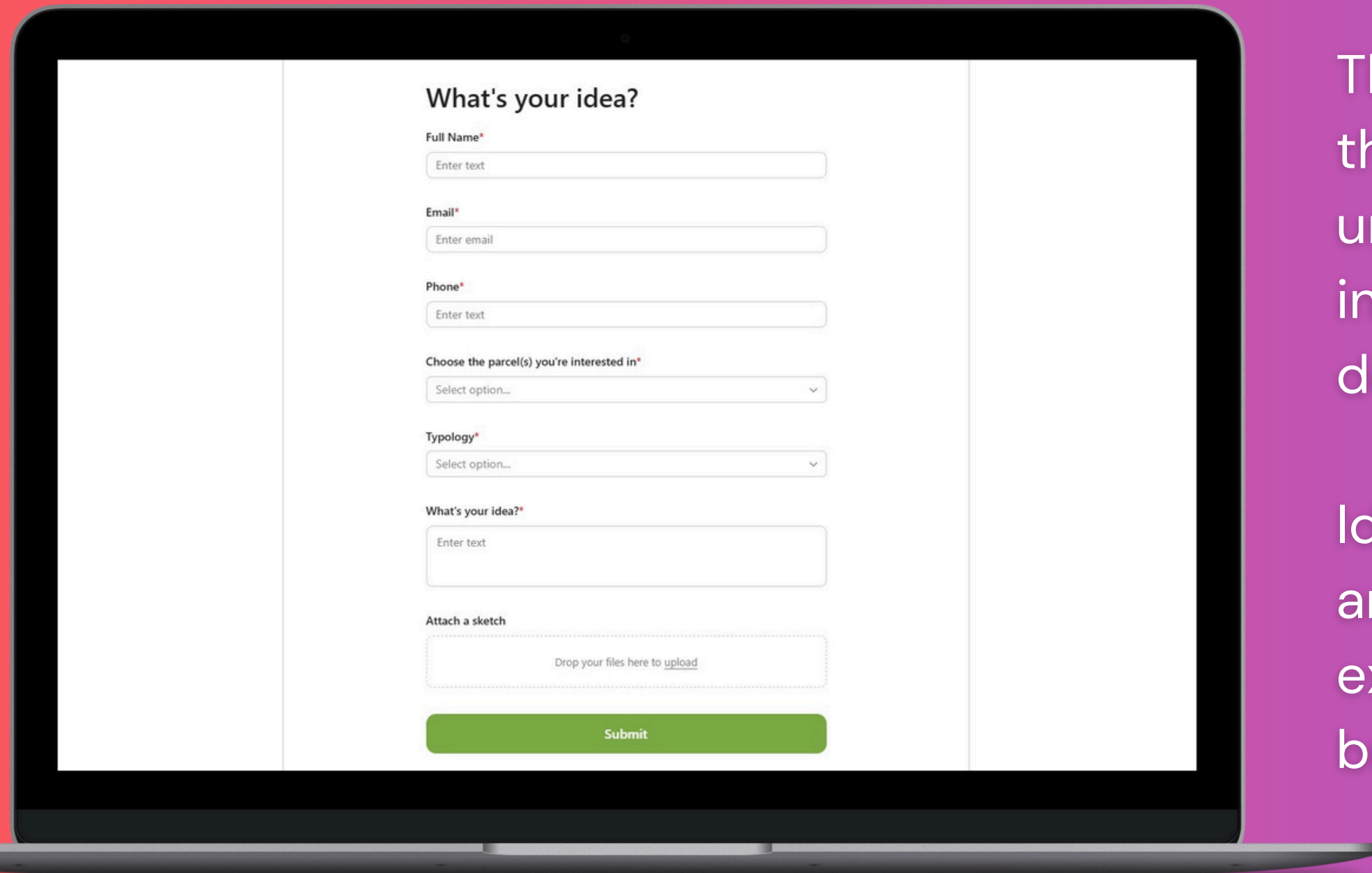


“Meet Your Match” Mixer

- Lot owners can opt in to present their property (or have it presented).
- Developers, realtors, artists, and entrepreneurs hear about CRA benefits.
- Think: speed networking meets Shark Tank meets planning happy hour.



CRA Lots Reimagined



The image shows a laptop screen with a web form. The form is titled "What's your idea?" and contains several input fields and a submit button. The fields are: "Full Name*" (text input), "Email*" (text input), "Phone*" (text input), "Choose the parcel(s) you're interested in*" (dropdown menu), "Typology*" (dropdown menu), "What's your idea?*" (text input), and "Attach a sketch" (file upload area). A green "Submit" button is at the bottom.

What's your idea?

Full Name*
Enter text

Email*
Enter email

Phone*
Enter text

Choose the parcel(s) you're interested in*
Select option...

Typology*
Select option...

What's your idea?*
Enter text

Attach a sketch
Drop your files here to [upload](#)

Submit

The CRA Lots Reimagined initiative invites the public to share creative ideas for how underutilized spaces could be transformed into vibrant, community-focused destinations.

Ideas may be shared with property owners and community partners to spark excitement, inspire investment, and generate buzz about the possibilities!