

## MARTIN COUNTY AIRPORT - - OPERATIONS INFORMATION

MONTH	Total Airport Operations							Voluntary CURFEW HOURS (11 am - 7 am)																TOTAL JET OPERATIONS						JET OPS AS % OF TOTAL OPS									
	YR2014	YR2015	YR2016	YR2017	YR2018	YR2019	YR2020	% OF TOTAL OPERATIONS DURING CURFEW						*EXEMPT / NON-EXEMPT 2019 DURING CURFEW				JET AIRCRAFT OPERATIONS ONLY						YR2014	YR2015	YR2016	YR2017	YR2018	YR2019	YR2020	YR2014	YR2015	YR2016	YR2017	YR2018	YR2019	YR2020		
								YR2014	YR2015	YR2016	YR2017	YR2018	YR2019	YR2020	Exempt #	Exempt %	Non-Ex. #	Non-Ex.%	YR2014	YR2015	YR2016	YR2017	YR2018															YR2019	YR2020
January	6266	6270	7339	9375	9523	11791	11828	1.86%	1.10%	0.72%	0.95%	1.05%	0.59%	0.92%	10	0.08%	100	0.85%	28	26	44	52	35	36	49	1255	1116	1408	1416	1898	1769	2621	20.03%	17.80%	19.19%	15.10%	19.93%	15.00%	22.16%
February	7405	6697	8022	8924	10222	10532	11832	1.92%	1.43%	1.15%	1.20%	1.13%	0.77%	0.83%	5	0.04%	98	0.83%	56	40	46	72	41	46	59	1202	1210	1394	1931	1912	2068	2276	16.23%	18.07%	17.38%	21.64%	18.70%	19.64%	19.24%
March	7305	7072	8286	11270	10928	11322	12738	1.47%	1.34%	1.17%	1.46%	1.38%	1.08%	0.74%	3	0.02%	94	0.74%	33	47	43	73	62	57	38	1404	1345	1428	1729	2283	2776	2023	19.22%	19.02%	17.23%	15.34%	20.89%	24.52%	15.88%
April	7550	8298	8799	9539	8895	12398	6172	1.59%	1.13%	1.19%	1.26%	1.42%	0.96%	0.76%	6	0.10%	41	0.68%	34	44	29	70	50	56	7	1183	1220	1269	1872	1974	2111	656	15.67%	14.70%	14.42%	19.62%	22.19%	17.03%	10.63%
May	7798	8622	8554	10423	8123	12141	8512	2.62%	1.47%	0.96%	0.94%	1.26%	1.36%	1.53%	4	0.05%	80	0.94%	16	17	29	42	50	34	20	781	907	979	1048	1162	1481	1419	10.02%	10.52%	11.44%	10.05%	14.31%	12.20%	7.71%
June	6618	7050	6540	8397	9337	8773	9799	2.41%	1.45%	1.08%	1.29%	2.33%	1.87%	1.28%	6	0.06%	119	1.21%	13	20	16	14	16	25	21	435	456	441	527	927	875	1362	6.57%	6.47%	6.74%	6.28%	9.93%	9.97%	13.90%
July	6036	7715	6811	8099	8295	9902	9168	1.52%	1.34%	0.96%	1.09%	2.16%	1.66%	1.15%	4	0.04%	101	1.10%	8	16	10	24	19	24	17	325	406	368	481	790	748	1128	5.38%	5.26%	5.40%	5.94%	9.52%	7.55%	12.30%
August	6257	5920	6283	9080	7504	8583	8901	1.71%	1.45%	0.91%	0.94%	1.24%	1.01%	1.69%	5	0.06%	145	1.63%	12	16	4	23	20	69	34	319	403	364	475	787	911	992	5.10%	6.81%	5.79%	5.23%	10.49%	10.61%	11.14%
September	6307	7027	6526	5994	7691	8316	8341	1.38%	6.70%	1.18%	1.47%	1.00%	1.54%	1.63%	3	0.04%	124	1.49%	11	20	16	42	16	28	9	311	466	428	689	838	796	973	4.93%	6.63%	6.56%	11.49%	10.90%	9.57%	11.67%
October	7636	8304	6445	8272	9788	11087		1.47%	0.62%	0.83%	0.86%	0.81%	0.74%					16	19	24	33	31	38		627	805	763	809	1188	1230		8.21%	9.69%	11.84%	9.78%	12.14%	11.09%		
November	6830	8893	9789	8997	10638	10265		1.29%	0.79%	1.10%	1.32%	1.28%	1.33%					28	30	45	52	50	47		1074	1200	1136	1498	1934	1794		15.72%	13.49%	11.60%	16.65%	18.18%	17.48%		
December	7290	7191	8667	9051	9217	9978		1.32%	1.10%	0.89%	1.10%	1.14%	1.30%					23	34	38	52	43	60		1331	1308	1295	1899	1825	2617		18.26%	18.19%	14.94%	20.98%	19.80%	26.23%		
YTD	83,298	89,059	92,061	107,421	110,161	125,088	87,291								46		902		278	329	344	549	433	520	254	10,247	10,842	11,273	14,374	17,518	19,176	13,450							
Monthly Avg	6,942	7,422	7,672	8,952	9,180	10,424	9,699	1.71%	1.66%	1.01%	1.16%	1.38%	1.18%	1.17%	5	0.05%	100	1.05%	23	27	29	46	36	43	28	854	904	939	1198	1459.833	1598	1494.444	12.11%	12.22%	11.88%	13.18%	15.58%	15.07%	13.85%

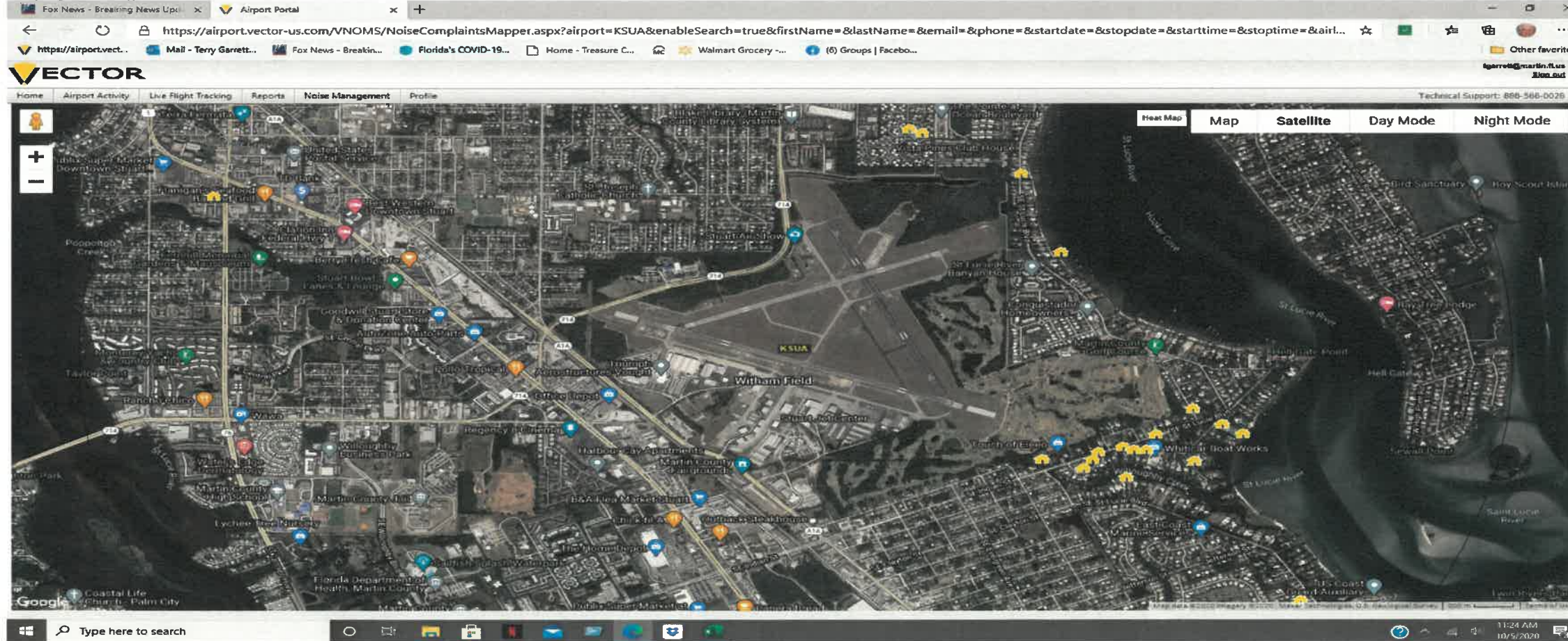
**INCLUDED AIRCRAFT	
LS	Life Safety - (PHI)
SO	Sheriff's Office
USCG	United States Coast Guard
(MD)	Medical
MIL	Military
After Hours	N Numbers 2200-0700
N#	N Number

**SOURCE:**  
Airport Traffic Tower Records  
Vector

**NOTE:**  
\*Exempt/Non-exempt\* Breakdown Section was added to report April 2011  
These statistics were not kept prior to this date.  
This section will reflect current year only.

2020 Percentage of non-exempt operations in compliance with Voluntary Curfew											
Jan	Feb	Mar	Apr	May	Jun	July	Aug	Sep	Oct	Nov	Dec
99.15%	99.17%	99.26%	99.34%	99.06%	98.79%	98.90%	98.37%	98.51%			
YTD	99.15%	99.16%	99.20%	99.23%	99.20%	99.13%	99.10%	99.00%	98.95%		

### January 2019 - September 2020 Noise Compliant Map



### Temporary Flight Restriction Report

TFR Dates	Jets	Other	Total	Ops During Curfew
Jan. 1-5	739	868	1607	23
Jan. 17-19	267	538	805	20
Jan. 31	139	429	568	11
Feb. 1-2	112	318	430	6
Feb. 14-16	319	437	756	9
Feb. 28	82	427	509	7
Mar. 6-10	585	1260	1845	22
April 1-30	0	0	0	0
May 1-31	0	0	0	0
June	0	0	0	0
July	0	0	0	0
August	0	0	0	0
September	32	182	214	3
Totals	2275	4459	6734	101