

This document may be reproduced upon request in an alternative format by contacting the County ADA Coordinator (772) 320-3131, the County Administration Office (772) 288-5400, Florida Relay 711, or by completing our accessibility feedback form at [www.martin.fl.us/accessibility-feedback](http://www.martin.fl.us/accessibility-feedback)

**BEFORE THE BOARD OF COUNTY COMMISSIONERS  
MARTIN COUNTY, FLORIDA**

**RESOLUTION NUMBER 22-**

**A RESOLUTION OF MARTIN COUNTY, FLORIDA, TO INITIATE FUTURE LAND USE  
MAP AMENDMENTS TO THE COMPREHENSIVE GROWTH MANAGEMENT PLAN**

**WHEREAS**, the Martin County Comprehensive Growth Management Plan, Section 1-11, Amendment Procedures, states that the Martin County Board of County Commissioners may, by resolution, initiate a request to amend, modify, add to, or change the Comprehensive Growth Management Plan; and

**WHEREAS**, on April 25, 2022, the Community Redevelopment Agency took action to request that the Board of County Commissioners initiate an amendment of the Future Land Use Map within the Port Salerno Community Redevelopment Area to help realize important regional stormwater objectives and to better facilitate redevelopment in the Port Salerno CRA; and

**WHEREAS**, the subject properties, as more particularly described on Exhibits A and B, are generally located at the corner of SE Cove Road and SE Albacore Avenue, in the Port Salerno CRA and total approximately 1.97 acres.

**NOW, THEREFORE, BE IT RESOLVED BY THE BOARD OF COMMISSIONERS OF MARTIN COUNTY, FLORIDA, THAT:**

The Martin County Board of Commissioners herein initiates an amendment of the Comprehensive Growth Management Plan to change the future land use designation to the most appropriate designations for the property identified on the attached Exhibits A and B, which contain the Location Map, Property Descriptions and total acreage.

**DULY PASSED AND ADOPTED THIS 3<sup>rd</sup> DAY OF MAY 2022.**

**ATTEST:**

**BOARD OF COUNTY COMMISSIONERS  
MARTIN COUNTY, FLORIDA**

\_\_\_\_\_  
**CAROLYN TIMMANN,  
CLERK OF THE CIRCUIT  
COURT AND COMPTROLLER**

**BY:**\_\_\_\_\_  
**DOUG SMITH, CHAIRMAN**

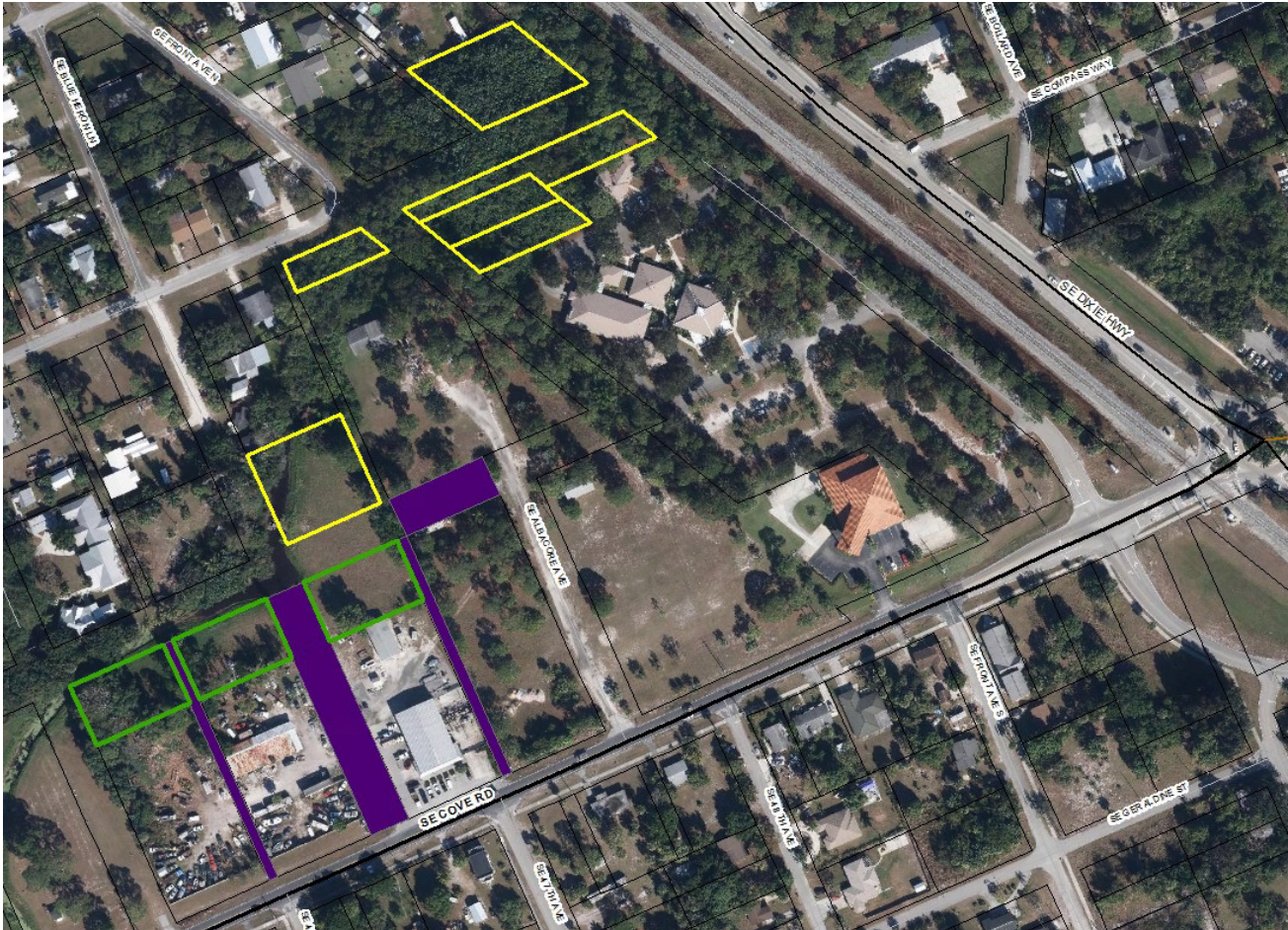
**APPROVED AS TO FORM  
AND LEGAL SUFFICIENCY**

**BY:**\_\_\_\_\_  
**SARAH W. WOODS,  
COUNTY ATTORNEY**

## Exhibit A

### Location Map

Subject properties are outlined in green and shaded in purple.



**Exhibit B**

**Property Descriptions**

**Properties subject to proposed Future Land Use amendment and zoning subdistrict amendment**

<u>PID:</u>	<u>Legal Description:</u>	<u>Land Area (acres):</u>
51-38-41-001-046-00010-7	Lots 1, 2, 9 and 10, Block 46, Port Salerno	.6540
51-38-41-001-053-00010-3	Lots 1 & 2, Block 53, Port Salerno	.3270
<u>Rights-of-Way:</u>		
15-foot wide alley lying between Lots 1 through 8, Block 46 and lots 9 through 16, Block 46, Port Salerno		.1308
15-foot wide alley lying between Lots 1 through 8, Block 53 and Lots 9 through 16, Block 53, Port Salerno		.1308
A portion of a 60-foot wide ROW lying between Block 46 and Block 53, Port Salerno		.2066
A portion of a 60-foot wide ROW lying between Lot 16, Block 52 and Lot 9, Block 53, Port Salerno		.5234
	<b>Total Land Area</b>	<b>1.97 acres</b>

\* All references to “Port Salerno” shall refer to the Plat of Port Salerno, recorded in Plat Book 1, Page 132, Public Records of Martin County, Florida.