



# Martin County Airport (Witham Field) Update

*May 3, 2022*

# Fixed Base Operator (FBO) Status

- **Stuart Jet Center was acquired by Ross Aviation (August 13, 2021)**
- **Ross Aviation and Atlantic Aviation are currently in the process of a merger acquisition.**
- **Atlantic Aviation's original leasehold was assigned to APP properties (April 8, 2022)**
- **The terms for Both FBO leases expire in 2047.**

# Fixed Base Operator (FBO) Status



# Fixed Base Operator (FBO) Status



# Bipartisan Infrastructure Law (BIL) Funding

- Also known as the Infrastructure Bill
- Martin County Airport has been allocated \$3,815,000 over the next five (5) years.
- Projects must meet Airport Improvement Program (AIP) eligibility requirements.
- BIL allocated funds have the same Federal cost share as AIP grants.  
FAA 90% | FDOT 5% | Airport Enterprise Fund 5%.
- FAA has requested that Martin County Airport identify projects to be funded by BIL.

# Engineered Material Arresting System (EMAS)

- The EMAS technology allows airports to be in compliance with FAA standards in cases where land is not available, or it is not possible to have the standard **1,000-foot** overrun.

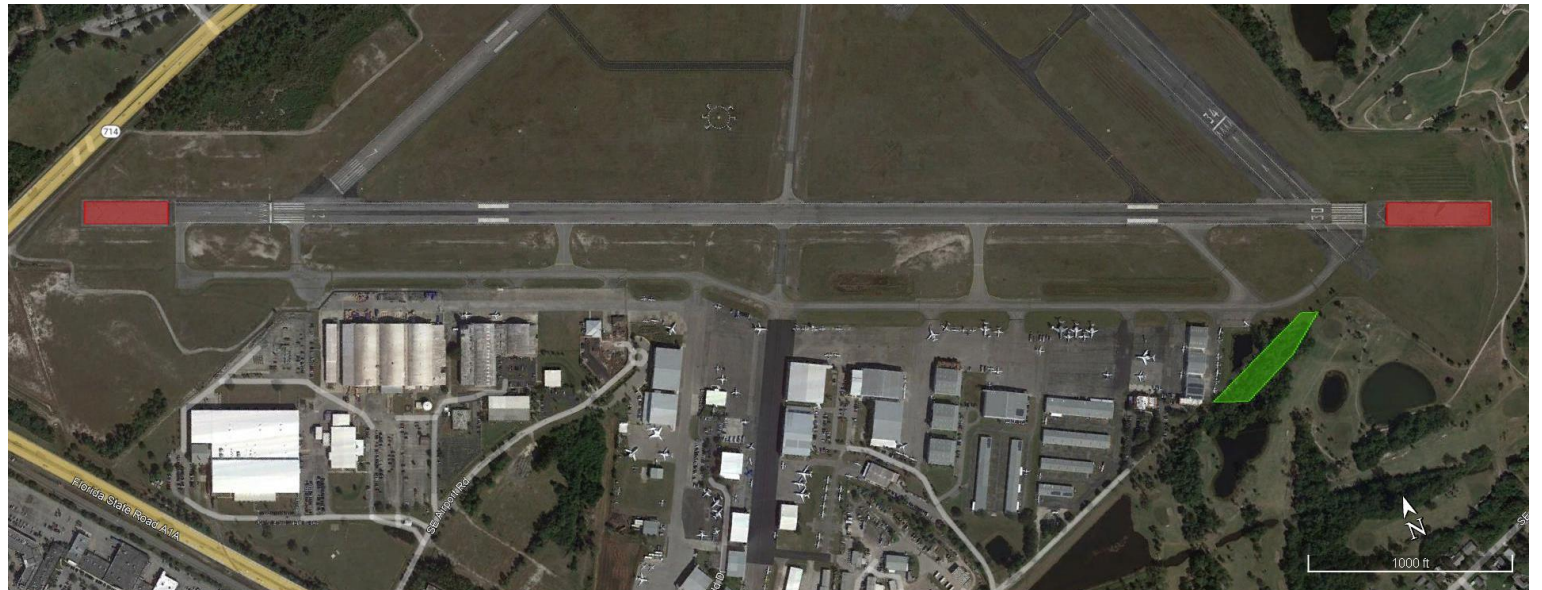
Runway	Current RSA Length	FAA Standard RSA Length
12	400'	1,000'
30	650'	1,000'



# Staff Seeks Direction

AIP eligible projects identified in consultation with FAA:

- Option 1 – Rehabilitate and Maintain RWY 12/30 EMAS on both ends. Approximate cost \$14 Million
- Option 2 – Rehabilitate and Maintain RWY 12 EMAS and eliminate RWY 30 EMAS. Approximate cost \$6 Million.
- Addendum A – Standardize Hold Bay TWY A and RWY 30. Approximate cost \$1 Million.



# Runway 30 End Safety Area Improvements

- Option 2
  - Acquire golf course property from Martin County for an estimated \$450,000
  - Remove existing EMAS, regrade and turf the standard Runway Safety Area, relocate cart path, and install wildlife fence for an estimated \$2 Million



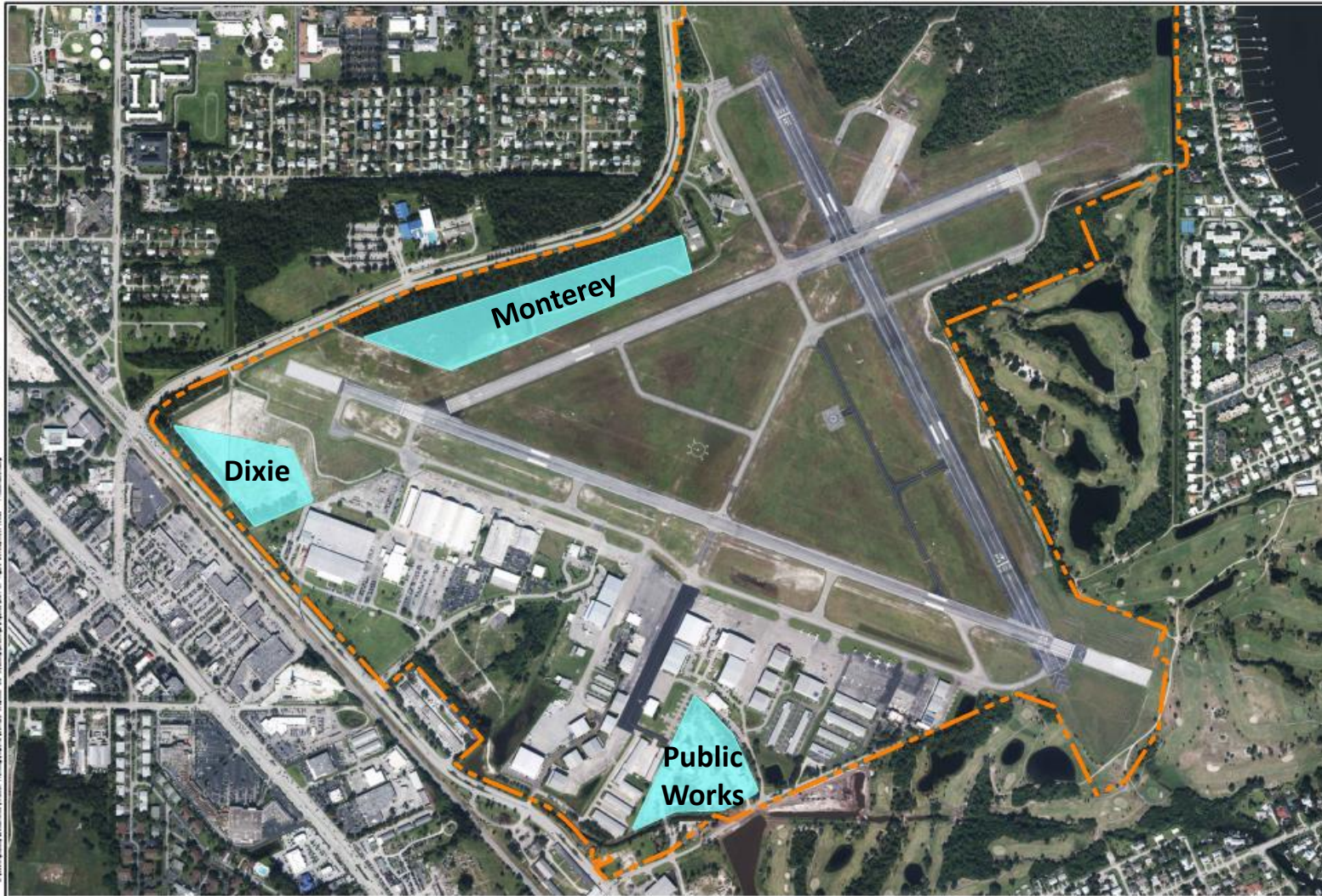
# Runway 30 End Safety Area Improvements



# Runway 30 End Safety Area Improvements



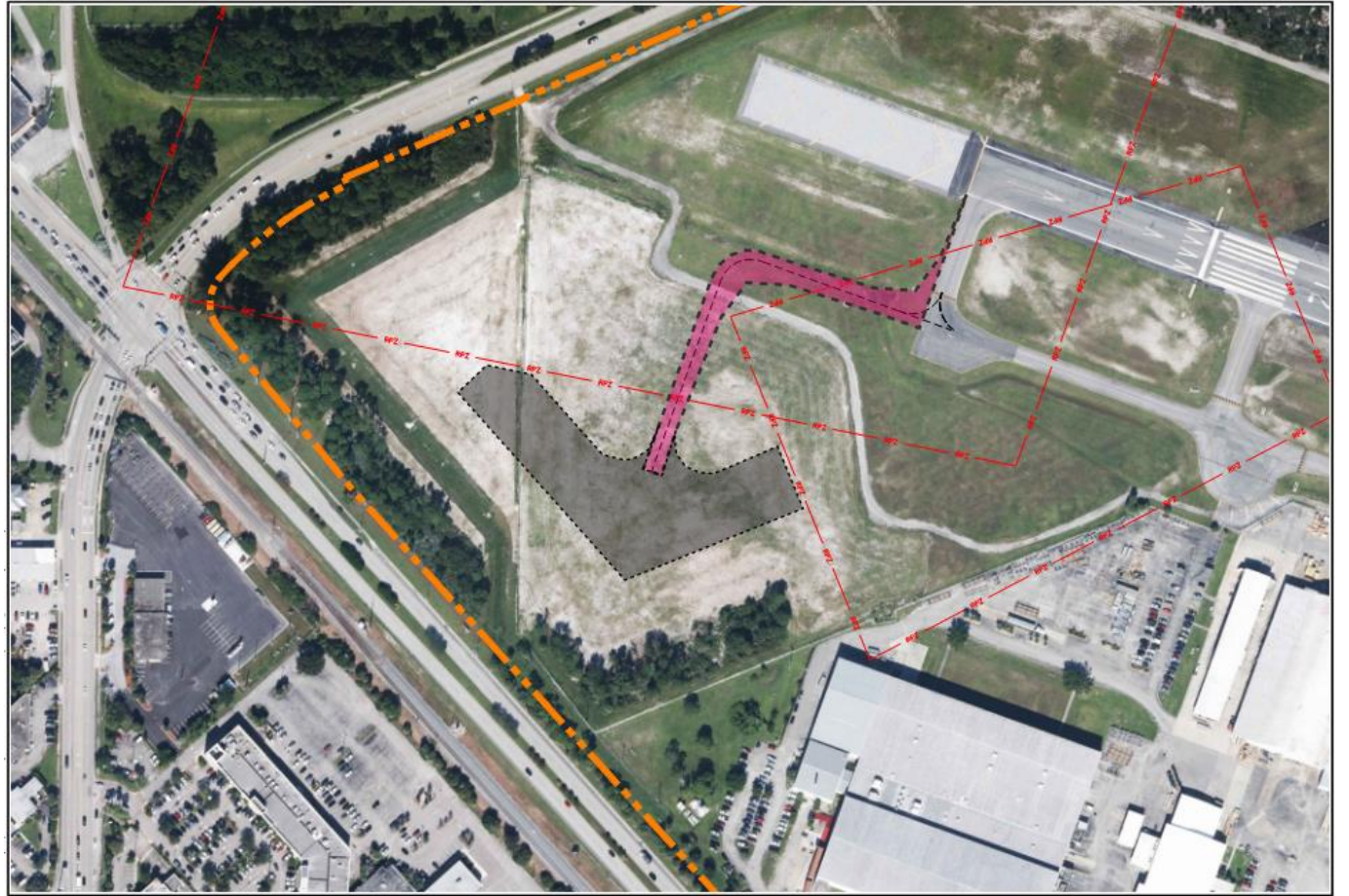
# Available Aeronautical Property



- Public Works
  - Piston aircraft
  - Type of aircraft constrained by geometry
  - 3-5 years
- Dixie
  - Open for all GA aircraft
  - Slightly constrained
  - Need TWY A improvements
  - 2-3 years
- Monterey
  - Safety Area constraints

# Dixie Layout

- Maintain 150' green buffer
- Modify Taxiway A
- Access from Dixie Hwy must be created
- Estimated cost \$1.5 Million



# Action Needed from BOCC

1. Direct staff with Option 1, Option 2, Addendum A, or provide further direction
2. Provide direction to staff on how to proceed with available properties at Martin County Airport