

Informational Materials Submitted with Agenda Item for Medical Examiner Resolution:

- A. Medical Examiner's Presentation from 10/26/21
- B. Senator Harrell's letter dated 10/29/21
- C. E-mail from Senator Harrell's office requesting a resolution from each county
- D. E-mail correspondence on 5/11/21 requesting funding for a new building from the counties
- E. Opinion Letter Dated 5/19/21 from County Attorney's Office, Interlocal Agreement with Medical Examiner and Florida Senate Local Funding Imitative Request from District 1 for Medical Examiner Facility Planning and Design
- F. Section from Attorney Generals Advisory Legal Opinion on Medical Examiners Duties and Responsibilities
- G. State rule making and information on the Medical Examiners Commission
- H. Florida Statute 406.08
- I. Medical Examiner's FY23 Budget Request
- J. Resolution from St. Lucie County Board of County Commissioners (BOCC)
- K. Resolution from Indian River County BOCC
- L. Resolution from Okeechobee County BOCC

OFFICE OF THE MEDICAL EXAMINER
DISTRICT – 19

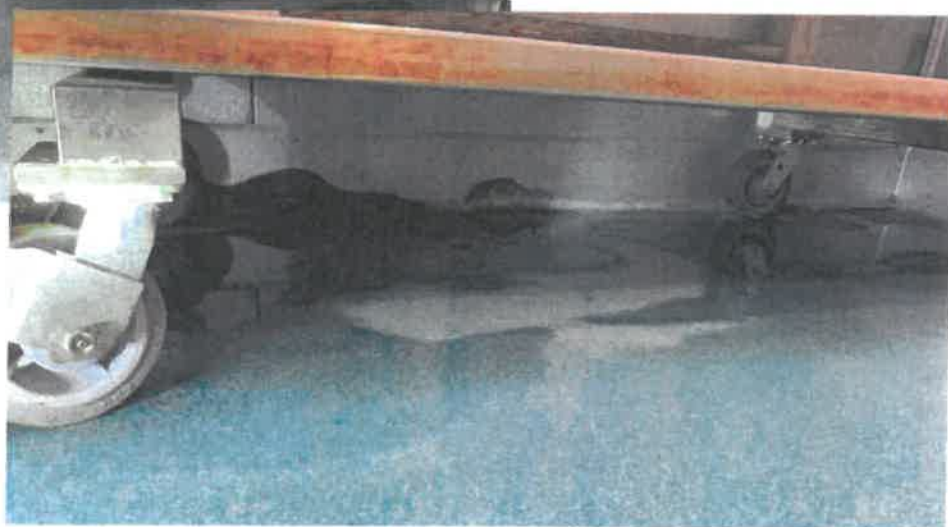
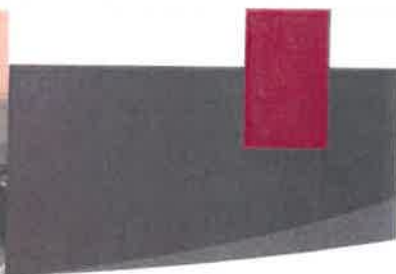
BUILDING NEEDS AND CONCERNS

Overall Concerns with Building

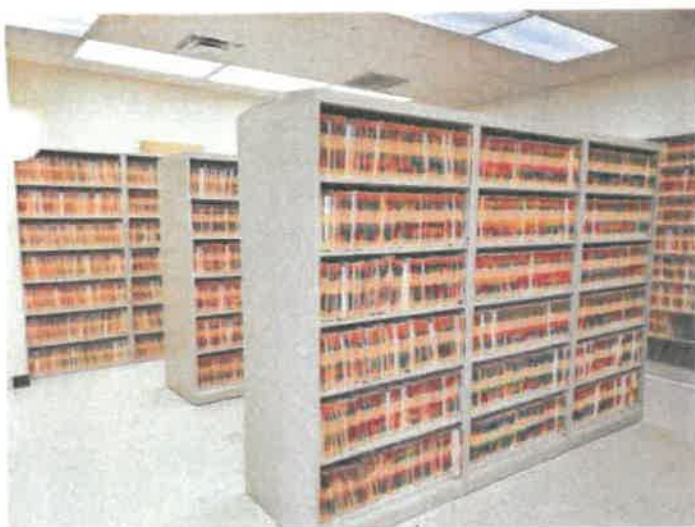
- ▶ **Completely outgrown the building**
 - ▶ No room in coolers
 - ▶ No safe and secure place for files
 - ▶ Need to convert break room into two offices; absolutely no more room for anymore office space
- ▶ **Building is OLD (built in the 1960's); roof leaks; continue to place costly temporary patches on all issues**
- ▶ **White powder spraying onto bodies, trays and floors; aluminum oxide**
 - ▶ Currently have an estimate for cost to repair coolers of over \$35,000
- ▶ **Chiller plant shutdowns**
 - ▶ Extreme heat and condensation build up in autopsy room; excess rust on equipment
- ▶ **Cooler leaks, coolers on outside walls and lock to outside door into receiving cooler**
- ▶ **Water shut down coming in November where our building will have to be shut down completely for half a day or more**





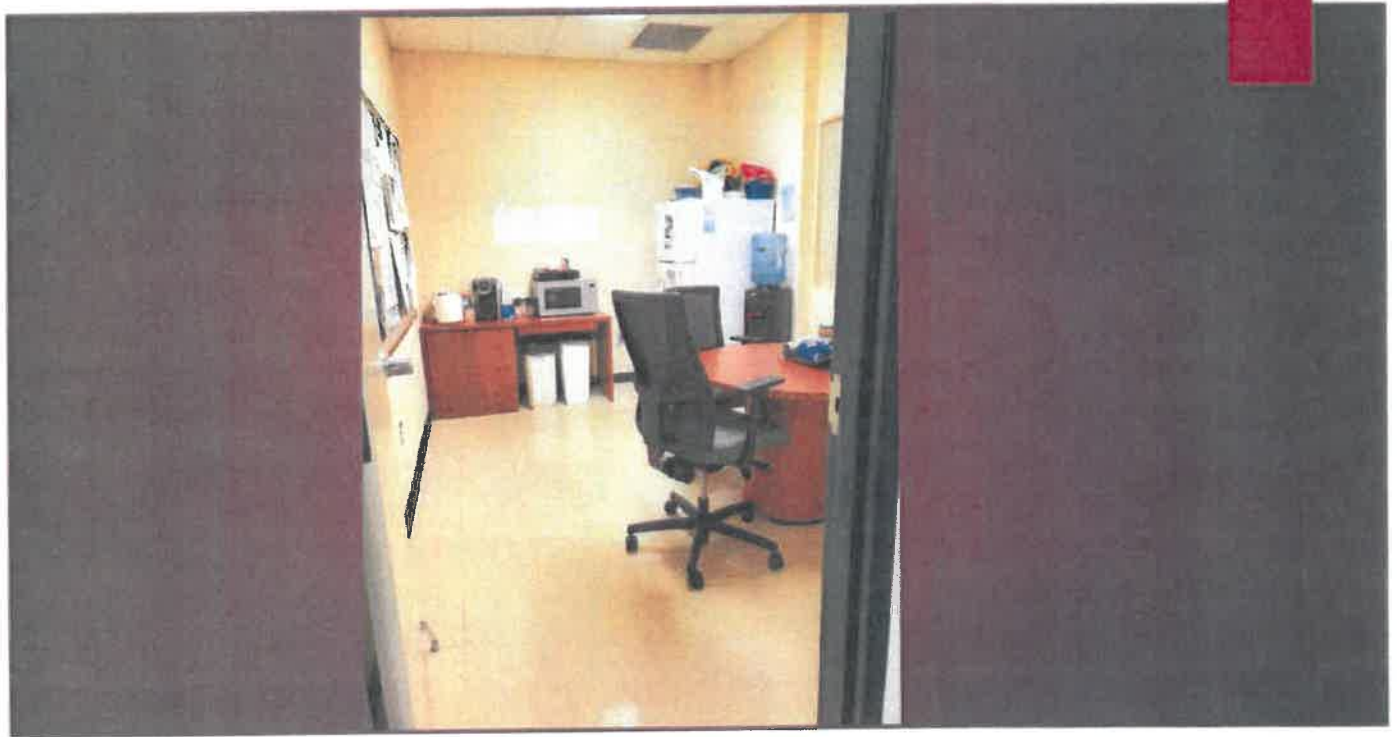


FILE STORAGE

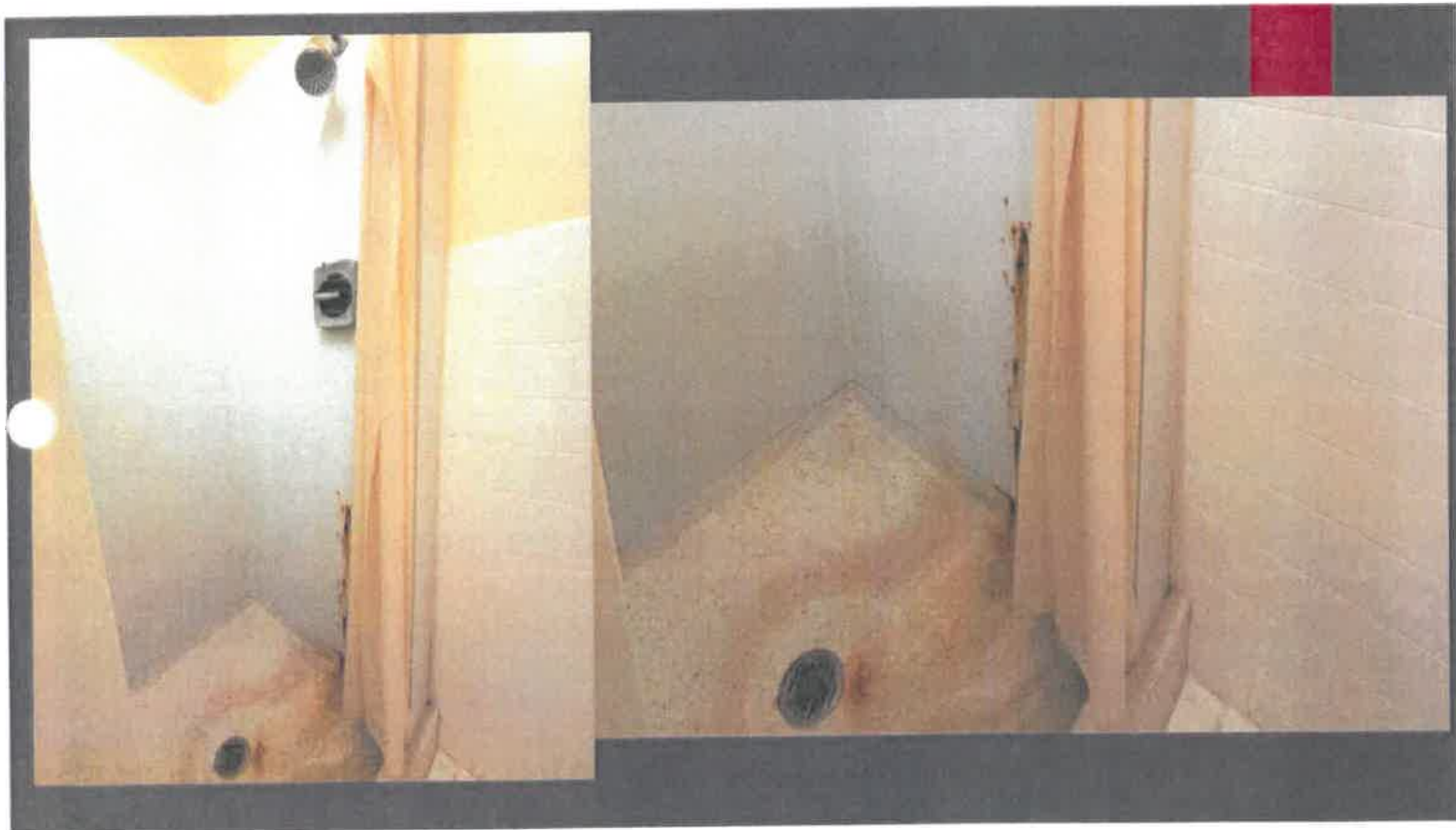


FIRE SAFETY









BODY STORAGE

Current Cooler Capacity

- Intake Cooler – 10 (maximum use)
- Decomposed Body Cooler – 9 (white powder accumulation)
- Main Body Storage Cooler – 15
- During busy times two decedents may need to be placed on the same shelf or tray or in a body bag on the floor

Manual and Hydraulic Lifts

- Hydraulic lift old and works intermittently despite numerous attempts to fix

Autopsy Suite Issues

- ▶ No separate room for decomposed remains
 - ▶ Odor and insect activity
- ▶ Funeral homes must come through the main autopsy area for removal of remains (regardless if cases are ongoing at that time)
 - ▶ Compromises confidentiality and dignity; increases exposure (COVID)

NAME
accreditation
preparation

- ▶ OUR BIGGEST PROBLEM:
 - ▶ Adequate space for employees and proper storage for decedents and materials (Phase II violation)

What Would a New Facility Provide?

- ▶ Much needed space for our current needs and continually growing needs
 - ▶ We are already 130 cases ahead of last year and the population is growing
 - ▶ More office space for increasing employees which will be needed
 - ▶ Allows us to avoid a NAME accreditation Phase II violation
 - ▶ Bathrooms, showers, and lockers
- ▶ More room and proper storage of decedents
 - ▶ Facility with coolers away from outside walls for proper insulation
 - ▶ No more storing bodies outside of the facility and no doubling up of trays
 - ▶ No unexpected hazards like wet floors, bodily fluids backing up into the street, and breathing in unknown white powders

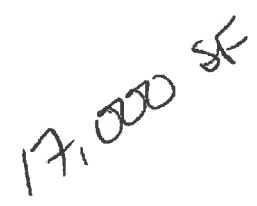
What Would a New Facility Provide?

- ▶ Respect, confidentiality and dignity for the decedents at our office
 - ▶ Cooler access for funeral homes not going through the main autopsy suite
 - ▶ Separate decomposition room which would double as an infectious case room (COVID)
 - ▶ Stand-by generator for entire building during possible prolonged outages
 - ▶ Possibility of mass fatality processing areas
- ▶ Facility Upgrades
 - ▶ Viewing room for families; standing guard over comrades
 - ▶ Family room for private conversations with families
 - ▶ Sterile room for tissue recovery
 - ▶ Conference space/library for depositions and lectures increasing education



FINANCING THE NEW FACILITY

- ▶ Not an easy task
- ▶ Searching for grants and getting negative results
- ▶ Called Senators, Governors' Office and grant writers from the county and college
- ▶ Grant EDA-2021-ARPAEAA - American Rescue Plan Act Economic Adjustment Assistance
- ▶ Each county to find funding for the critical issue (F.S. 406.08)





THE FLORIDA SENATE

Tallahassee, Florida 32399-1100

COMMITTEES:
 Transportation, *Chair*
 Military and Veterans Affairs, Space,
 and Domestic Security, *Vice Chair*
 Appropriations Subcommittee on Health and
 Human Services
 Children, Families, and Elder Affairs
 Finance and Tax
 Reapportionment

SELECT SUBCOMMITTEE:
 Select Subcommittee on Congressional
 Reapportionment

SENATOR GAYLE HARRELL

25th District

October 29, 2021

Thank you again for the invitation to attend the Tri-County Commission meeting, it was very informative and I look forward to continuing our partnership with the Treasure Coast. One specific issue, which was discussed at the meeting and I am hopeful we can partner on, will be the 19th Judicial Circuit Medical Examiner's new facility request.

The 19th Judicial Circuit Office of the Medical Examiner located at Indian River State College was built in 1975 and later renovated in 2011. This facility is responsible for serving the four county area of Okeechobee, Indian River, Martin and St. Lucie Counties. As presented by Dr. Aronica, the Chief Medical Examiner, the current facilities are in extremely poor conditions, and recently failed file storage capabilities and additionally, the increase in population, it has become apparent that the building can no longer meet the growing needs of the Treasure Coast.

To better assist the Medical Examiner in their endeavors of securing a new facility, I will be coordinating an Advisory Task Force to provide solutions to this ongoing issue. As part of this Advisory Task Force, I am requesting for each Board of County Commission from Martin, Indian River, Okeechobee and St. Lucie Counties to appoint one County Commissioner to the Task Force. This appointment will be the County's representation on this task force and will be responsible in providing guidance and communicating all progress to their respective boards for further consideration. Other appointments to this Task Force will include the Medical Examiner's office and a representative from Indian River State College.

Once your Board has agreed to the appointment, please provide all contact information of the appointee to my District Aide, Ann Bolduc (772) 221-4019 or by email, bolduc.ann@flsenate.gov. Time is of the essence on this issue, so we would like to respectfully request your Board to secure this decision by November 5, 2021, so we may schedule our first meeting of the Task Force in the very near future.

I am hopeful we can include your County's support in this endeavor.

Thank you again for your consideration on my request and most importantly for your continued support.

Sincerely,

Gayle Harrell, Senator
 District 25

REPLY TO:

□ 215 SW Federal Highway, Suite 203, Stuart, Florida 34994 (772) 221-4019 FAX: (888) 263-7895
 □ 322 Senate Building, 404 South Monroe Street, Tallahassee, Florida 32399-1100 (850) 487-5025

Senate's Website: www.flsenate.gov

WILTON SIMPSON
 President of the Senate

AARON BEAN
 President Pro Tempore

Taryn Kryzda

Subject: Medical Examiner's Task Force
Location: IRSC - Rep. Dan Trabusly Office - Bldg S

Start: Thu 5/19/2022 10:00 AM
End: Thu 5/19/2022 12:00 PM
Show Time As: Tentative

Recurrence: (none)

Organizer: Bolduc.Ann

SECURITY WARNING: This email originated from outside the County systems. Please show caution when clicking links or opening attachments unless you recognize the sender and know the content is safe.

Members,

Senator Harrell has requested these items from each County be completed and presented to the Task Force.

Memorandum of Understanding between all 4 counties which will provide an agreement on the administrative lead County being St. Lucie County, and the 4 county funding formula responsibility for the project. These documents will be needed to submit the Appropriation Project Request (APR) form this upcoming fall and given the rough estimate provided the anticipated first request will be \$2 million, however this amount could change after a confirmed forecast is provided by the 4 counties.

Currently the Counties within the 19th District use a funding formula when allocating funds to the operations of the Medical Examiner's Office. The Task Force has proposed this same formula to be used as guidance for determining the financial responsibility for each County. Below is the 2021 breakdown per county:

SLC – 46.11%
 Martin - 22.42%
 Indian River - 24.36%
 Okeechobee - 7.11%

Deadlines for documentation to the ME Task Force:

May 19, 2022 - Resolutions in support

October 1, 2022 – Memorandum of Understandings

**** St Lucie County has given us a copy of their resolution for each county to use as a guide for presentation before their board. As time is of the essence, we cannot stress enough, how important it is that each county begin working on their Resolution and MOU to be voted on by their County Board ASAP! This needs to be ready for presentation to the ME Task Force so Senator Harrell and Representative Trabulsky may move forward with an appropriation request for the next legislative session.**

If you have any question please feel free to contact our office .

Thank you

Ann Bolduc
Legislative Assistant, Senator Gayle Harrell
(772) 221-4019

Please Note: Florida has very broad public records laws. Most written communications to or from County officials regarding County business are public records available to the public and media upon request. It is the policy of St. Lucie County that all County records shall be open for personal inspection, examination and / or copying. Your e-mail communications will be subject to public disclosure unless an exemption applies to the communication. If you received this email in error, please notify the sender by reply e-mail and delete all materials from all computers.

Director of OMB
Office of Management & Budget
Martin County Board of County Commissioners
772-288-5504 (o)

From: Christine Canard <canardc@stlucieco.org>
Sent: Tuesday, May 11, 2021 11:38 AM
To: Jennifer Hill <hillj@stlucieco.org>; Kristin Daniels <kdaniels@ircgov.com>; Jennifer Manning <jmanning@martin.fl.us>; Kelley Conrad <kconrad@co.okeechobee.fl.us>
Cc: Patricia Aronica <aronicap@stlucieco.org>
Subject: New Building Funding Request

**Caution: This email originated from an external source.
Be Suspicious of Attachments, Links, and Requests for Login Information**

Good Morning Budget Directors,

The Office of the Medical Examiner is requesting funding for a new building from the four counties we serve.

The Indian River State College facility was built in 1975 and renovated in 2011. The building was not specifically built for a Medical Examiner facility but was retrofitted. Due to the increase in population, it has become apparent over the past several years that the building can no longer meet our growing needs.

Offices, storage space for records and supplies along with cooler space for decedent's is at capacity and finding replacement parts for permanent fixtures due to the aging design has been difficult. The layout of the autopsy area compromises the integrity of the cases and dignity for the decedents.

We anticipate the cost of the building to be, at most, \$20 million dollars and will be requested in increments over the next five years. The initial need would be \$3 - \$5 million for design of the building that we would like to implement as soon as possible with a target date no later than 2022.

We would appreciate your feedback to this request.

Thank you for your support.

Christine Canard
Operations Manager
2500 S. 35th Street
Fort Pierce, FL 34981
Canardc@stlucieco.org
772-464-7378



OFFICE OF THE
**MEDICAL
EXAMINER**
DISTRICT 19

Please Note: Florida has very broad public records laws. Most written communications to or from County officials regarding County business are public records available to the public and media upon request. It is the policy of St. Lucie County that all County records shall be open for personal inspection, examination and / or copying. Your e-mail communications will be subject to public disclosure unless an exemption applies to the communication. If you received this email in error, please notify the sender by reply e-mail and delete all materials from all computers.

Taryn Kryzda

From: Taryn Kryzda
Sent: Wednesday, May 19, 2021 8:38 AM
To: Taryn Kryzda
Subject: FW: New Building Funding Request

Taryn G. Kryzda, MPA, CPM
County Administrator
Martin County Board of County Commissioners
2401 SE Monterey Road
Stuart, FL 34996
772-288-5939 (o)



"Florida has a very broad public records law. As a result, any written communication created or received by Martin County Board of County Commissioners' employees is subject to disclosure to the public and the media, upon request, unless otherwise exempt. Under Florida law, e-mail addresses are public records. If you do not want your email address released in response to a public records request, do not send electronic mail to this entity. Instead, contact this office by phone or in writing."

From: Jennifer Manning <jmanning@martin.fl.us>
Sent: Wednesday, May 12, 2021 2:24 PM
To: Taryn Kryzda <tkryzda@martin.fl.us>
Subject: FW: New Building Funding Request

Jennifer Manning, CGFO
Director of OMB
Office of Management & Budget
Martin County Board of County Commissioners
772-288-5504 (o)

From: Jennifer Manning
Sent: Tuesday, May 11, 2021 1:31 PM
To: Taryn Kryzda <tkryzda@martin.fl.us>; Don Donaldson <ddonalds@martin.fl.us>
Cc: George Stokus <gstokus@martin.fl.us>
Subject: FW: New Building Funding Request

Hi Taryn,
I mentioned the request below to Don and George at yesterday's meeting. If you have a minute I can fill you in on my meeting with her last Thursday.
Thanks

Jennifer Manning, CGFO

MARTIN COUNTY, FLORIDA INTER-OFFICE MEMORANDUM

www.martin.fl.us

2401 SE Monterey Road, Stuart, Florida 34996

This document may be reproduced upon request in an alternative format by contacting the County ADA Coordinator (772) 320-3131, the County Administration Office (772) 288-5400, Florida Relay 711, or by completing our accessibility feedback form at www.martin.fl.us/accessibility-feedback.

TO: Taryn Kryzda

DATE: May 19, 2021

FROM: Elysse A. Elder
Senior Assistant County Attorney

SUBJECT: Medical Examiner Facility

The Medical Examiners Act ("Act"), Chapter 406, Florida Statutes, establishes the minimum and uniform standards for statewide medical examiner services. The Act creates a Medical Examiners Commission ("Commission") to oversee medical examiner activities. § 406.02, Fla. Stat. The Commission establishes Medical Examiner Districts throughout the State of Florida. Martin County is in the 19th District, which includes Martin, St. Lucie, Okeechobee and Indian River Counties. Fla. Admin. Code R. 11G-5.002. A district medical examiner is appointed by the Governor for a term of 3 years. § 406.06(1)(a), Fla. Stat.

It appears that state funds are available to medical directors. Statutorily, the Medical Examiners Commission is required to oversee the distribution of state funds for the medical examiner districts. § 406.02(4)(c), Fla. Stat. The Commission promulgates rules under the Act, which are located in Chapter 11G of the Florida Administrative Code. Florida Administrative Code Rule 11G-4, "Financial Assistance For Medical Examiner Districts," should provide provisions for state assistance to medical examiners, but that chapter is blank, so it is unclear how state funds are distributed. I was able to find a Florida Senate Local Funding Initiative Request for 2021-2022 seeking funding for the District 1 Medical Examiner's facility, which was sponsored by Senator Doug Broxson. It appears the request is for an initial amount of \$500,000 with an additional year of funding of \$2 million to supplement local funding in the amount of \$10 million for a facility. The funds requested would be provided to the Florida Department of Law Enforcement, which oversees the Commission. The state funds seem to be supplemental to county funds.

District medical examiners are compensated by the Board of County Commissioners in their respective districts. The fees, salaries and expenses of medical examiners may be payable from the general funds or any other funds under the control of the Board. § 406.08, Fla. Stat. Florida Statutes § 406.08(5) provides that "autopsy and laboratory facilities utilized by the district medical examiner or his or her associates may be provided on a permanent or contractual basis by the counties within the district." The language in the statute states that the facilities may be provided to the medical examiner on a permanent or contractual basis; it does not require a new/permanent building for the medical examiner.

Currently, an Interlocal Agreement exists between Martin County, Indian River County, St. Lucie County, Okeechobee County, the 19th District Medical Examiner and the District Board of Trustees for IRSC regarding the Medical Examiner, which was executed less than 3 years ago. The expenses of operating are divided among the four counties based on their proportionate share. In addition, the counties are required to lease the Morgue located at Indian River State College for the Medical Examiner. The term expires on September 30, 2028, with a seven (7) year option to renew. Under Section 7 (a) of the ILA, the Medical Examiner specifically agrees to occupy and use the Morgue facilities. There is nothing in the ILA that requires the counties to provide the Medical Examiner with a new facility. In fact, the ILA has specific provisions relating to a potential new facility. Section 2 (a) provides that “in the event IRSC constructs a new facility which contains adequate space for the Medical Examiner’s operations and upon mutual agreement of the parties, the Medical Examiner shall relocate his operations to this facility and IRSC may use the vacant Morgue Building I for other purposes it deems fit.” The discretion to construct a new facility for the Medical Examiner’s use would be with IRSC and the relocation into the new facility would be based on the agreement of the parties.

Based on Florida law and the ILA there is no requirement for the counties to provide the Medical Examiner with a new facility. To the contrary, the counties have agreed to lease, and the Medical Examiner has agreed to use, the Morgue facility at IRSC through September 30, 2028.

**SECOND AMENDED AND RESTATED
INTERLOCAL AGREEMENT
(MEDICAL EXAMINER)**

THIS SECOND AMENDED AND RESTATED INTERLOCAL AGREEMENT by and between the **MEDICAL EXAMINER FOR DISTRICT 19, FLORIDA** ("Medical Examiner"), the **DISTRICT BOARD OF TRUSTEES** ("the Board") of **INDIAN RIVER STATE COLLEGE**, a public educational institution ("IRSC"), and **INDIAN RIVER COUNTY, MARTIN COUNTY, OKEECHOBEE COUNTY, and ST. LUCIE COUNTY**, political subdivisions of the State of Florida that collectively constitute Medical Examiner District 19 ("the Counties"), for the purpose of providing medical examiner services within Medical Examiner District 19.

WHEREAS, the Parties entered into an Amended and Restated Interlocal Agreement which the parties desire to further amend and restate.

In consideration of the mutual advantages accruing to the parties, the Medical Examiner, the Board, and the Counties agree as follows:

SECTION 1. STATUS OF THE MEDICAL EXAMINER AND COUNTIES.

(a) The Medical Examiner shall be an independent contractor, not the agent, servant or employee of the Counties or any other entity or organization. As such, he shall maintain complete and total control of his employees, agents and servants.

(b) The Medical Examiner, or his designee, shall prepare and submit a total unified budget by April 1 of each year to each County respectively for the operation of the Medical Examiner District which shall be subject to approval of the Counties. As set out in Section 4, budgeted monies shall be paid directly to the Examiner for proper disbursement to entitled parties.

(c) The Medical Examiner shall comply with Titles VI and VII of the Civil Rights Act of 1964; Executive Order Number 11246 entitled "Equal Employment Opportunity"; as supplemented by regulations of the United States Department of Labor (41 C.F.R. Part 60); and applicable Federal Regulations concerning non-discrimination on the basis of mental and physical handicaps.

(d) The Medical Examiner and the Counties shall comply with all applicable provisions of Chapter 406 of the Florida State Statutes, and rules and regulations of the Medical Examiner's Commission.

(e) The Medical Examiner shall comply with applicable Standards of Accountability, including:

- i. using an accounting system that meets generally accepted accounting principles.
- ii. maintaining such records and accounts as are necessary to properly account for funds disbursed to and expended by the Medical Examiner.

iii. retaining relevant records for a period of not less than three (3) years, unless otherwise provided by law.

iv. affording the Medical Examiner Commission, the Florida Department of Law Enforcement, the Counties and the Auditor General access to all records and accounts necessary to justify the use of funds disbursed by the Counties.

v. using funds received from the Counties only for the provision of Medical Examiner services.

vi. maintain a detailed inventory of fixed assets for tangible personal property.

vii. affix a property tag number to each piece of equipment owned by the Medical Examiner.

(f) The Medical Examiner shall provide the Counties with a quarterly expenditure report in a form acceptable to the Counties.

(g) The Medical Examiner shall annually provide the Counties with a copy of a financial audit required by Section 11.45, Florida Statutes (2018). The Medical Examiner agrees to select as its auditor the auditor selected by St. Lucie County to prepare the financial audit for the County.

SECTION 2. RENTAL AGREEMENT CONCERNING MORGUE LOCATED AT INDIAN RIVER STATE COLLEGE.

(a) **LEASE TERM.** Pursuant to Section 406.08(5), Florida Statutes, Counties do hereby agree to provide for Medical Examiner and his successors, and in consideration of the covenants herein contained, IRSC does hereby rent to Counties for the use and benefit of the Medical Examiner and successors that certain building known as "The Morgue" located at Indian River State College (College), 3209 Virginia Avenue, Fort Pierce, Florida, more particularly described in Exhibit "A", for a period of ten (10) years beginning on the 1st day of October, 2018, and ending on the 30th day of September, 2028. In the event IRSC constructs a new facility which contains adequate space for the Medical Examiner's operations and upon mutual agreement of the parties, the Medical Examiner shall relocate his operations to this facility and IRSC may use the vacant Morgue in Building I for other purposes as it deems fit. This new space shall become known as the Morgue for the purposes of this agreement.

(b) **OPTION.** Within seven (7) years from the date of this agreement, IRSC agrees to discuss with the Counties the granting of an option to the Counties to extend the lease term for an additional period of time. At the completion of the lease term, the Counties shall have the right of first refusal with respect to the subsequent lease of the Morgue.

(c) **RENTAL DURING INITIAL TERM.** Counties, for the benefit of Medical Examiner, in consideration of this Agreement and of the covenants and Agreement made herein rents the Morgue for said term and does hereby promise to pay to IRSC as rental for the Morgue, the sum of one and 0/100 (\$1.00) dollars per year, payable in advance on the 1st day of October each successive year.

(d) CONDITION AND USE OF THE MORGUE; EQUIPMENT. The Medical Examiner accepts the equipment identified in Exhibit "B" in its present condition. The Medical Examiner agrees to keep the Morgue in a good, clean condition; make no alterations or additions to same without the consent of IRSC which consent shall not be unreasonably withheld; permit no waste thereon; and to obey all laws and ordinances affecting the Morgue. The Medical Examiner further agrees to use the Morgue for the performance of autopsies, examinations, and other investigations as deemed necessary by the Medical Examiner and for no other purposes. It is specifically agreed that Examiner shall not use the Morgue for any personal or private use; the Morgue is to be used solely for Medical Examiner services. In the event it becomes necessary to provide additional major equipment (any equipment with a cost of \$1,000.00 or over) for the Morgue and if agreed by Counties, same shall be provided by Counties. Any equipment purchased with monies budgeted by the Counties shall become the property of the Office of the Medical Examiner and shall be properly tagged.

(e) MAINTENANCE OF THE MORGUE; PAYMENT OF EXPENSES. IRSC agrees to maintain the exterior of the Morgue. It shall be the responsibility of Counties to provide budgeted funds for the maintenance of the interior of the Morgue, including the air-conditioning, heating systems, and plumbing facilities provided that the Counties are not responsible to keep same in proper working condition. Counties shall be further responsible for funding, as set forth in the budget approved in accordance with section 3 of this Agreement, all utilities at the Morgue, including but not limited to, electricity, water and sewer (all of which shall be metered separately), internal security, janitorial service, garbage pick-up and telephones. It is understood that Counties have installed a telephone system at the Morgue, which telephone lines will be routed directly into the Morgue and not through the College switchboard. No access to the telephone lines shall be permitted by any other extension not in the Morgue or through any other equipment. The Medical Examiner shall also make provisions for a separate mailbox or post office box to serve the Morgue and Medical Examiner which in no way shall be connected to the College. It is also understood by the parties that the Medical Examiner for auditing purposes is an independent special district and is responsible for all interior maintenance and utility costs as set forth in this section 2 (e), procurement of supplies, including the cost thereof and all matters of Medical Examiner personnel, including payroll records; it being understood that all payroll shall be paid by Medical Examiner.

SECTION 3. PROCEDURE TO REVIEW AND APPROVE THE MEDICAL EXAMINER'S BUDGET.

Pursuant to Section 1(b) of this Agreement, the Medical Examiner shall present a total unified budget for the following fiscal year by April 1 of each year to each County respectively. Upon receipt of the budget, the budget shall be referred to a Medical Examiner's Budget Committee, which shall be composed of one (1) representative from each of the four (4) counties as appointed by each Board of County Commissioners, respectively. The members of the Committee shall review the proposed budget and may schedule meetings with the Medical Examiner to discuss the proposed budget. All meetings of the Committee are subject to the provisions of Section 286.011, Florida Statutes (2018), as amended. The Committee may make recommendations to the four (4) Boards of County Commissioners as to whether to adopt or amend the proposed budget. The Committee shall complete its deliberations by June 1 of each year.

Upon completing its deliberations, the Committee shall forward the proposed budget to the budget officer or other designated officer for each of the four (4) counties. The proposed budget

shall then be presented to each of the four (4) Boards of County Commissioners for consideration during the Board's normal budgetary process. The proposed budget shall be subject to the approval of each of the four (4) Boards of County Commissioners. The Counties agree that the proposed budget may not be increased without the consent of all four (4) counties. In the event any of the four (4) Boards of County Commissioners determine to reduce the total unified budget as proposed, the Board(s) reducing the proposed budget shall amend the proposed total budget, adopt the amended total budget and notify the other counties of the action taken on the budget within seven (7) days. The amended total budget, if reduced by one (1) or more of the counties, shall be deemed to be the approved budget by all four (4) counties. Nothing in this Agreement shall prohibit the Medical Examiner from requesting additional appropriations for good cause shown, from the Counties during the budget year. The Counties acknowledge that the effect of this section will be that any of the four (4) Board of County Commissioners may reduce the total budget without the consent of the other counties and that the lowest approved total budget shall be deemed to be the total budget approved by the Counties.

SECTION 4. DIVISION OF RENTAL AND OPERATING EXPENSE.

(a) The expenses of operating the Medical Examiner's Office including rental and purchase of additional equipment as set out herein shall be divided among and borne by the Counties based on a formula in which the ratio of the number of autopsies performed for each County in the previous year (A) to the number of autopsies performed in the four counties in the previous year (B) is weighted 50 percent, and the ratio of the number of deaths in each county in the previous year (C) to the total number of deaths in the four counties in the previous year (D) is weighted 50 percent. The formula is expressed as $(A/B \times 0.5) + (C/D \times 0.5) =$ respective County's share of expenses.

(b) **CALCULATION.** The Counties agree to calculate the division of rental and operating expenses April 1 of every year during the term of this Agreement beginning in 2019 by using the above formula based on the autopsy and death figures from the year preceding the year the expenses are recalculated. The recalculation shall be effective on the following October 1.

SECTION 5. PAYMENT OF RENTAL AND OPERATING EXPENSES.

(a) During the term of this Agreement, Indian River, Martin, Okeechobee and St. Lucie Counties shall pay to IRSC its estimated, respective share of the rental of the Morgue in advance annually on the 1st day of October of each year effective beginning in 2018. During the term of this Agreement, the Counties shall pay to the Medical Examiner its estimated, respective share of the Medical Examiner's monthly operating expenses based on the budget approved by the Counties and on the formula set out in Section 3. The operating expenses shall be paid in advance monthly beginning on the 1st day of October, 2018.

(b) If during any period of this Agreement, the rental and operating expenses of the Morgue are less than the amounts received from the Counties, the excess funds shall be carried forward to the next year and shall be applied to that county's share of the operating expenses for the next succeeding year.

(c) No county shall be deemed to assume any additional share of the total operating expenses of the Morgue by reason of the default of one or more of the other counties.

SECTION 6. INSURANCE AND INDEMNIFICATION.

During the term of this Agreement, IRSC shall provide fire and extended casualty insurance coverage for the real property owned by IRSC, in full insurable value. The Medical Examiner shall provide fire and extended casualty insurance coverage for equipment owned by the Medical Examiner in full insurable value.

Pursuant to an Interlocal Agreement dated July 8, 2008, between St. Lucie County and the Medical Examiner, St. Lucie County is providing health, life, disability and worker's compensation insurance services to the Medical Examiner based on rates established by St. Lucie County. St. Lucie County bills the Medical Examiner for the insurance services based on the established rates.

During the term of this Agreement, the Medical Examiner shall obtain and carry professional liability insurance as required by Chapter 406 of the Florida Statutes in an amount not less than \$1,000,000.00. Solely, to the extent allowed by Florida law, and in no event greater than the limits set out in Section 768.28, Florida Statutes, each party to this Agreement agrees to indemnify and hold the other parties harmless from damages resulting from the negligence of each party, its agents and employees.

SECTION 7. COVENANTS BY THE MEDICAL EXAMINER.

(a) During the term of this Agreement, the Medical Examiner and his successors agree to occupy and use the Morgue facilities to perform autopsies within the four (4) county area.

(b) At no time shall there be any personnel in the Morgue located at the College, other than custodians approved by the Medical Examiner, unless accompanied by a representative from the Medical Examiner's office, except during an emergency. During an emergency, the Medical Examiner will be contacted as soon as possible. During normal business hours, no one shall proceed beyond the front reception area of the Morgue without the express consent of Medical Examiner personnel and unless they are accompanied by Medical Examiner personnel. After normal working hours, no one other than Medical Examiner personnel, shall be allowed in the Morgue unless prior permission is obtained from the Medical Examiner's office; and they are accompanied by Medical Examiner personnel, except in the event of an emergency. The Medical Examiner shall provide College and continue to provide College with a current list of all Medical Examiner personnel throughout the term of this Agreement.

SECTION 8. MISCELLANEOUS PROVISIONS.

(a) Any alteration, variation, modification, extension, renewal, or waiver of the provisions of this Agreement shall be valid only when reduced to writing, duly authorized and signed, by all parties, and attached to the original.

(b) The name of the Morgue facility located at the College shall be "Office of the Medical Examiner, District 19, Florida".

(c) This Agreement shall be binding on the parties hereto, their successor and assigns when permitted. If the Morgue shall be wrecked or destroyed by fire or other casualty so as to render it unfit for occupancy, IRSC shall use the insurance proceeds to repair or reconstruct the Morgue as speedily as possible but in no event shall any party hereto be entitled to compensation or damage on account of the annoyance or inconvenience of IRSC in making said repairs; and neither the Medical Examiner nor the Counties shall be entitled to compensation or damage on account of such destruction.

(d) Neither the Medical Examiner nor the Counties may sublet or re-rent the Morgue or any part thereof or assign this Agreement or permit any transfer thereof by operation of law without the consent in writing from all parties. Any assignee or sublessee must be approved by all parties. Any assignee or sublessee must be approved by all parties, and such written consent or approval by all parties shall in no way affect or relieve the Medical Examiner or Counties of their obligation arising under this Agreement or the laws of this State.

(e) This Agreement embodies the whole understanding of the parties. There are no promises, terms, conditions or obligations other than those contained herein; and this Agreement shall supersede all previous communications, representations, or Agreements, either verbal or written, between the parties hereto.

(f) The Agreement may only be amended by a written document signed by all parties and filed with the Clerks of the Circuit Court of Indian River County, Martin County, Okeechobee County and St. Lucie County, Florida.

(g) This Agreement can be cancelled upon giving twelve (12) months prior written notice before the beginning of the next fiscal year by anyone (1) of the four (4) Counties provided that the non-terminating Counties shall have the option to continue renting the morgue facilities subject to the terms and conditions of this Agreement. The termination of this Agreement shall not require IRSC to refund any monies collected by the Board pursuant to this Agreement. In addition, the termination of this Agreement shall not require any of the non-terminating counties or the Medical Examiner to refund any monies or equipment collected or purchased pursuant to this Agreement.

(h) This Agreement shall be filed with the Clerks of the Circuit Court of Indian River County, Martin County, Okeechobee County and St. Lucie County, Florida, prior to its effectiveness.

SECTION 9. NOTICE.

All notices or other communications hereunder shall be in writing and shall be deemed duly given if delivered in person or sent by certified or registered mail, return receipt requested, first class, postage prepaid and addressed as follows:

IF TO IRSC:

Vice President of Financial Services and CFO
3209 Virginia Avenue
Fort Pierce, Florida 34982

With a copy to:

IF TO MEDICAL EXAMINER:

Medical Examiner for District 19, Florida
2500 South 35th Street
Fort Peirce, Florida 34981

With a copy to:

IF TO COUNTIES:

St. Lucie County Administrator
2300 Virginia Avenue
Fort Pierce, Florida 34982

With a copy to:

Indian River County Administrator
1801 27th Street, Building A
Vero Beach, Florida 32960

Martin County Administrator
2401 S.E. Monterey Road
Stuart, Florida 34996

Okeechobee County Administrator
304 Northwest Second Street
Okeechobee, Florida 34972

IN WITNESS WHEREOF, the parties have executed this Agreement by their duly authorized officials on the dates stated below. This Agreement may be executed in counterparts and each fully executed counterpart shall be deemed an original instrument.

WITNESS:

Suzanne Parsons

(SEAL)

DISTRICT BOARD OF TRUSTEES OF
INDIAN RIVER STATE COLLEGE

BY: [Signature]

Date: 9-18-18



ATTEST: JEFFREY R. SMITH, CLERK OF CIRCUIT
COURT AND COMPTROLLER

By 
Deputy Clerk

(SEAL)


INDIAN RIVER COUNTY, FLORIDA

By: 
Peter D. O'Bryan, Chairman
Board of County Commissioners



BCC approved: September 18, 2018

APPROVED AS TO FORM AND
LEGAL SUFFICIENCY:

By: 
Dylan Reingold, County Attorney

ATTEST:



Carolyn Timmann

CAROLYN TIMMANN, CLERK OF THE
CIRCUIT COURT AND COMPTROLLER

BOARD OF COUNTY COMMISSIONERS
MARTIN COUNTY, FLORIDA



EDWARD V. CIAMPI, CHAIRMAN

APPROVED AS TO FORM & LEGAL
SUFFICIENCY:



SARAH WOODS, COUNTY ATTORNEY

ATTEST:

OKEECHOBEE COUNTY, FLORIDA

Paula Peterson-DC
Clerk

BY: [Signature]
Chair, Board of County
Commissioners

SHARON ROBERTSON, CLERK

Date: 10/11/2018



APPROVED AS TO FORM AND
CORRECTNESS:

[Signature]
County Attorney
9/11/18

ATTEST:

Betty J.
Clerk

(SEAL)



ST. LUCIE COUNTY, FLORIDA

BY: Therese L. Johnson
Chair, Board of County
Commissioners

Date: 9/18/18

APPROVED AS TO FORM AND
CORRECTNESS:

[Signature]
County Attorney

WITNESS:

Kimberly Ann Carroll
Notary Public (and Seal)

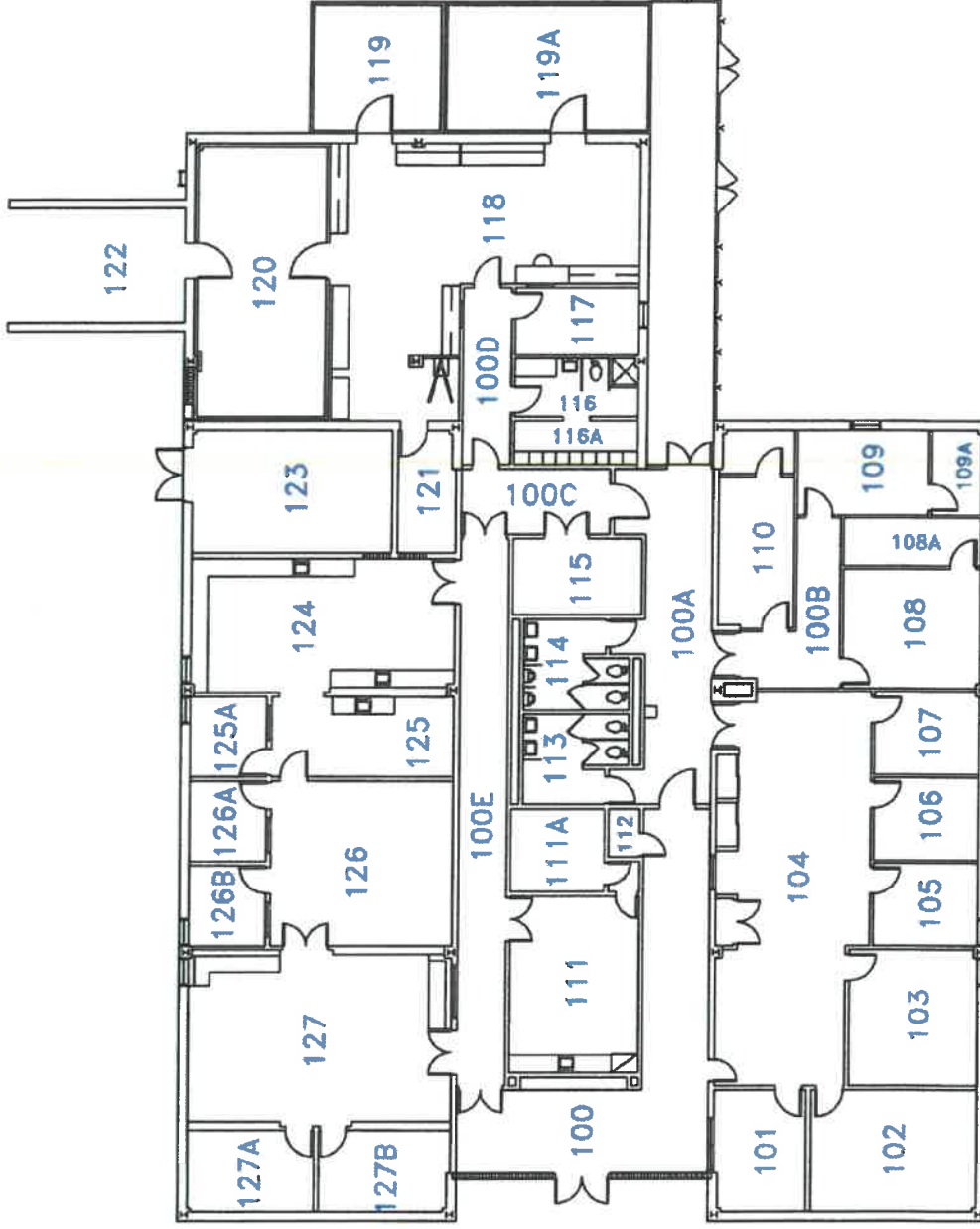


MEDICAL EXAMINER DISTRICT 19,
FLORIDA

By: Roger Muttler

Date: 10/11/18

EXHIBIT "A"



SCALE: 1"=20'

FORT PIERCE MAIN CAMPUS - SITE NO. 01

BUILDING	BUILDING LETTER	BUILDING NAME	SQUARE FEET	DESIGNATION
9	I	MEDICAL EXAMINER	9,500	1-09-I



INDIAN RIVER
STATE COLLEGE

EXHIBIT "B"

OFFICE OF THE MEDICAL EXAMINER - DISTRICT 19

PHYSICAL INVENTORY LIST

List Items Over \$1,000

Tag No.:	Description:	Serial No.:	Date ACQ.:	Purchase Price:
	Automobile - 2000 Chev. Van Astro	1GNDM19W3YB119333	4/20/2000	\$5,250.00
	Automobile - 2007 Chev. Impala LS Sedan	2G1WB55K579365102	4/20/2007	\$15,350.00
0120	Autopsy Station, Wall Mounted & Features	Model 1036-7	7/24/2001	\$15,927.00
0203	Body Scale	N/A	7/1/1987	\$12,200.00
0204	Body Scale	N/A	8/1/1989	\$7,250.00
0121	Cooler, Walk-In	C8001434	10/16/2001	\$18,977.69
0130	Copier, Doc Feed / Fax MITA 2530 (Pur. for \$150)	H3042383	7/23/2007	\$3,000.00
0122	Disposal, Commercial 3/4 HP	Model # SS-75	4/17/2000	\$1,145.60
	Disposal, Garbage, For Morgue-Installed 3/17/09	Item ISE 13659A SS75-28 208-230	2/11/2009	\$1,265.55
0119	Lift, Universal, AN-30-P, With Pallet	10397	4/17/2001	\$5,084.31
0196	Microscope, Nikon E50i, Dr. O'Neill's	115258	8/5/2009	\$5,911.00
0300	Microscope, Nikon Photomicroscope- Dr. M.	43245	10/30/1996	\$11,738.00
	Phone System - Comm. Cable Co.	N/A	3/15/2001	\$3,375.00
0167	Saw, Autopsy, 10000, 115 V, 50/60 HZ	NA	2/23/2007	\$1,020.25
0217	Saw, Autopsy, 110-120V, 50/60 Hz 1.5	5467	8/31/2010	\$1,137.10
0218	Saw, Autopsy, 110-120V, 50/60 Hz 1.5	4599	8/31/2010	\$1,137.10
0222	Autopsy Saw110-120V, 50/60 Hz	4693	9/27/2011	\$1,155.00
	Saw/Bone Dust Collector	NA	9/28/2001	\$1,049.00
0114	Storage Rack, Stainless Steel	N/A	1/31/2002	\$1,305.00
0115	Storage Rack, Stainless Steel	N/A	1/31/2002	\$1,305.00
0037	Tray/Gurney, Autopsy	N/A	7/1/1987	\$3,428.00
0038	Tray/Gurney, Autopsy	N/A	7/1/1987	\$3,428.00
0039	Tray/Gurney, Autopsy	N/A	7/1/1987	\$3,428.00
0040	Tray/Gurney, Autopsy	N/A	7/1/1987	\$3,334.00
0041	Tray/Gurney, Autopsy	N/A	7/1/1987	\$3,334.00
	Trays, Body 8 - Stainless Steel	Item # T3614	9/28/2004	\$6,072.00
0109	X-Ray, HF110 High Freq. Dynarad Sys.	1876/1871/1876	4/16/2001	\$16,974.00
0112	X-Ray, Intra Oral Image X70 W/Stand		5/2/2001	\$3,350.00
0142	X-Ray Film Processor W/Stand, Konica SRX 101A	105221147	4/15/2005	\$4,650.00
0443	Dell Latitude ES520 - Vinny's Laptop		4/7/2012	\$1,010.91
0448	Receiving Cooler 31' 8" W x 14' 9" D x 8'7" H		5/15/2012	\$23,852.00
0449	Holding Cooler 23' 6" W x 15' D x 8' 7" H		5/15/2012	\$27,343.00
0227	Toshiba Printer, Fax, Copier, Scanner		8/30/2012	\$6,417.00

0451	Autopsy Station Center	Model 1036-10MOD			
0456	Administrative Manager's Desk			5/15/2012	\$12,098.00
0425	Associate Medical Examiner Desk			6/15/2012	\$2,410.10
0484	Chief Medical Examiner Desk			6/15/2012	\$2,471.95
0497	Administrative Assistant Desk			6/15/2012	\$3,066.35
0493	General work area desk			6/15/2012	\$2,644.81
0490	Desk Investigator Office - Middle Office			6/15/2012	\$1,164.90
0435	Desk Investigator Office - East office			6/15/2012	\$1,184.50
0427	Desk Investigator Office - West Office			6/15/2012	\$1,184.50
0189	2-Way Motorola Radio	205C-JK2963		1/15/2009	\$2,600.00
0190	2-Way Motorola Radio	205C-JK2969		1/15/2009	\$2,600.00
0191	2-Way Motorola Radio	205C-JK2956		1/15/2009	\$2,600.00
0192	2-Way Motorola Radio	205C-JK2978		1/15/2009	\$2,600.00
0193	2-Way Motorola Radio	205C-JK2955		1/15/2009	\$2,600.00
0194	2-Way Motorola Radio	205C-JK2971		1/15/2009	\$2,600.00
0195	2-Way Motorola Radio	205C-JK2994		1/15/2009	\$2,600.00
0213	Cadaver Lift				
0228-0232	Qty: 5 Cantilver racks @ \$1,756 ea.			12/5/2012	\$8,038.00
0254	Autopsy Saw110-120V, 50/60 Hz			5/5/2012	\$8,780.00
0255	Digital X-ray			12/12/2012	\$1,346.35
0432	Microscope - Dr. Mittleman			12/13/2012	\$25,550.00
	Co-Observation set up for Dr. M's Microscope - add to Inventory # 432 line above (Coverdell Grant			10/2/2013	\$9,577.00
				12/15/2015	\$3,640.00
					\$13,217.00
				9/5/2014	1,254
434	Autopsy Saw110-120V, 50/60 Hz				
0379	RX-4 Automatic Tablet Counter (Coverdell Grant)			12/16/2014	\$2,500.00
398	Autopsy Saw110-120V, 50/60 Hz (Coverdell Grant)			3/3/2015	\$1,265.58
346	Autopsy Saw110-120V, 50/60 Hz			12/21/2015	\$1,282.75
340	14 x 17 Cassette for digital x-ray			1/15/2016	\$1,027.78
360	14 x 17 Cassette for digital x-ray			1/25/2017	\$1,550.00
356	Autopsy Saw110-120V, 50/60 Hz (Coverdell Grant)			4/7/2017	\$1,282.75
Total for Inventory #432					
700847					
RX-4					

OFFICE OF THE MEDICAL EXAMINER - DISTRICT 19

PHYSICAL INVENTORY LIST

Items Under \$1,000

Tag No.:	Description:	Serial No.:	Date ACQ.:	Purchase Price:
0126	Calculator, Victor 1208	Model 1209	3/12/2003	\$34.00
0139	Camera, Konica Minolta DiIMAGE Z10 - Bill	57415285	9/10/2004	\$299.00
0155	Camera, Nikon Digital Camera CoolPix 4600-Not Used	31093310	11/4/2005	\$207.95
0216	Camera, Sony DSC-HX100V Cyber-Shot - Morgue			
0224	Camera, Sony DSC-HX100V Cyber-Shot - Morgue	586065	11/14/2011	\$399.99
0225	Camera, Sony DSC-HX100V Cyber-Shot - Morgue	586084	12/13/2011	\$399.99
226	Camera, Sony DSC-HX200V Cyber-Shot - Morgue	3560272	10/4/2012	\$429.99
0171	Camera, Sony Cyber-Shot DSC-HE Digita I- Morgue	3652087	7/9/2007	
0198	Camera, Nikon CoolPix P90 - Morgue - Vinny	30162498	7/8/2009	\$409.00
0214	Camera, Nikon CoolPix P90 - Merv	30230336	11/23/2009	\$409.00
0093	Camera/Lens - Camera Doesn't Work	N7707868	1/31/1992	\$590.00
0153	Cart, Flat Shelf 19/30, Gray for the Morgue		7/25/2005	\$169.00
0174	Computer, HP Lap Top	(S) CNF7357L79	9/29/2007	\$996.00
0220	Computer & Monitor, Dell from IRSC	Service Tag:8HRFHQ1	6/7/2011	\$997.33
0071	Dictaphone 3255 Micro Port. Dictator	288853	6/22/2004	\$295.00
	Dictaphone 3254 Micro Port. Dictator -Replaced by 0154	943091		
412	Canon SX50 HS		9/24/2013	\$428.00
0433	Camera		10/28/2013	\$389.00
0094	File Cabinet - 4 Drawer, Letter Size	N/A	3/14/2001	\$108.90
0095	File Cabinet - 4 Drawer, Letter Size	N/A	3/14/2001	\$108.90
0096	File Cabinet - 4 Drawer, Letter Size	N/A	3/14/2001	\$108.90
0097	File Cabinet - 4 Drawer, Letter Size	N/A	3/14/2001	\$108.90
	File, Open Cabinets		5/18/2001	\$93.60 & \$679.68

	File, Open Cabinets (Replaced 1/13/04)		7/1/2003	\$128.80 & \$579.60
	File, Open Cabinets		7/29/2003	\$231.84
0046	File Cabinet, Open Shelf Storage	N/A	3/3/1989	\$910.00
0442	Upright Freezer		3/1/2012	\$800.00
0108	Light For The Morgue-Skytron	122099026-083	10/1/2001	\$584.00
0125	Micro Slide Storage Cabinet	NA	1/17/2003	\$266.89
0157	Microscope-Accuscope Stereo	050451	1/27/2006	\$400.00
0134	Modular Storage System (Micro slide Holder)	NA	1/14/2004	\$583.44
0401	Printer, HP 950C DeskJet		5/3/2001	\$244.00
0402	Printer, HP 2100M LaserJet	USFV07321	4/6/2001	\$682.00
0403	Printer, HP 2100M LaserJet	USFV073276	4/6/2001	\$682.00
0107	Printer, HP 2200D LaserJet	CNDRC43745	10/2/2001	\$671.33
0124	Printer, HP Photosmart 7550 Photo	CN28K421FS	12/16/2002	\$299.99
0141	Printer, HP Photosmart 8150-Dr. Mittleman's	MY4912K065	2/11/2004	\$174.33
0145	Printer, For Morgue to do Labels	A5J716782	5/12/2005	\$219.99
0176	Printer, Color & Scans For Dr. Graham		4/25/2008	\$289.99
0182	Printer, HP LaserJet P3005DN for Dr. Mittleman	SCNJ1G08281	8/7/2008	\$511.43
0184	Printer, HP LaserJet P3005DN-Dr. Mittleman	SCNJ1F76616	8/25/2008	\$511.43
0202	Refrigerator	NA	9/22/1992	\$499.00
	Saw, Autopsy	NA	9/28/2001	\$793.80
0137	Saw, Autopsy, 115V, 50/60 GZ, 1.5 /AMPS	NA	7/30/2004	\$963.00
	Scale - Electric	NA	6/26/2001	\$219.00
0215	Shredder		1/14/2010	\$149.99
	Skytron Diemeter Light W/Stand	NA	9/28/2001	\$584.00
0170	Tape Recorder, Sony		4/23/2007	\$44.00
0181	AS-4000 PC Transcription Kit - @ Transcriptionist's Home	OLAS4000	4/22/2008	\$329.00
0030	Typewriter, IBM	47110662878	7/1/1987	\$879.00
0031	Typewriter, IBM	7110530043	7/1/1987	\$879.00
0185	Typewriter, IBM 6, 31K Memory,	11-0123590	8/27/2008	\$349.00
0199	Typewriter, IBM Wheelwriter 6, Series II	11-6188229	9/24/2009	\$399.00
0081	Video Recorder RCA	38430014	6/1/1991	\$749.00
233-533	Autopsy Trays Qty: 20 @ \$640.00 ea.		12/5/2012	\$12,800.00
256	workstation - digital x-ray		12/11/2012	\$787.00
257	Magnifier Light		1/16/2013	\$443.00

No #	DVD Player	J46541645B	3/14/2006	\$35.62
0216	Soney DSC HX1, NP-FH50 Camera	650299	8/10/2010	\$399.00
0219	HP Laser Jet Printer P3015 - For Admin. Manager	VNBCB704RD	9/23/2010	\$925.08
0188	Computer - Morgue	IRCC Workstation	9/29/2008	\$944.66
413	Canon Camera		10/17/2014	\$399.00
0330	Micro Slide Storage Cabinet		2/2/2015	\$166.18
383	Canon Powershot Camera		6/25/2015	\$459.00
0268	Olympus Digital Dictation Machine - REM		10/7/2015	\$499.00
0269	Olympus Digital Dictation Machine - LON		10/12/2015	\$499.00
355	Micro Slide Storage Cabinet		2/29/2016	\$166.18
345	Partner phone - used		3/21/2016	\$80.00
348	Partner phone - used		5/11/2016	\$125.00
349	Partner phone - used		5/11/2016	\$100.00
347	Fly Killer for Morgue		5/13/2016	\$196.20
0390	Canon Camera - Obtained thru Coalition Grant		12/29/2016	\$549.00
0341	Kyocera Color Laser Printer		1/12/2017	\$992.00
357	Canon Powershot Camera		4/7/2017	\$449.99
362	Olympus Digital Dictation Machine - SN		4/4/2017	\$499.00
353	EGP Laser Printer - Dr. Norford		7/1/2017	\$399.00
358	Partner phone - New (Christine)		9/25/2017	\$150.00



The Florida Senate

Local Funding Initiative Request

Fiscal Year 2021-2022

LFIR # 1647

1. Project Title
2. Senate Sponsor
3. Date of Request

4. Project/Program Description

The requested funds will be used to initiate the planning and design process for a new District 1 Medical Examiner Facility. Currently the D1 ME operates out of leased space at Sacred Heart Hospital in Pensacola, FL. A site more centrally located in the District will be selected to allow easier access to all law enforcement and state attorney personnel within the District. The District counties have committed to construction of a new facility. This funding will properly scope the project.

5. State Agency to receive requested funds
- State Agency contacted?

6. Amount of the Nonrecurring Request for Fiscal Year 2021-2022

Type of Funding	Amount
Operations	500,000
Fixed Capital Outlay	0
Total State Funds Requested	500,000

7. Total Project Cost for Fiscal Year 2021-2022 (including matching funds available for this project)

Type of Funding	Amount	Percentage
Total State Funds Requested (from question #6)	500,000	100%
Matching Funds		
Federal	0	0%
State (excluding the amount of this request)	0	0%
Local	0	0%
Other	0	0%
Total Project Costs for Fiscal Year 2021-2022	500,000	100%

8. Has this project previously received state funding?

Fiscal Year (yyyy-yy)	Amount		Specific Appropriation #	Vetoed
	Recurring	Nonrecurring		

9. Is future funding likely to be requested?
- a. If yes, indicate nonrecurring amount per year.
- b. Describe the source of funding that can be used in lieu of state funding.
-

10. Has the entity requesting this project received any federal assistance related to the COVID-19 pandemic?



The Florida Senate

Local Funding Initiative Request

Fiscal Year 2021-2022

LFIR # 1647

If yes, indicate the amount of funds received and what the funds were used for.

\$32 million through the Coronavirus Relief Fund. Used for small business economic recovery grants, first responders, and COVID-19 testing centers.

11. Details on how the requested state funds will be expended

Spending Category	Description	Amount
Administrative Costs:		
Executive Director/Project Head Salary and Benefits		0
Other Salary and Benefits		0
Expense/Equipment/Travel/Supplies/Other		0
Consultants/Contracted Services/Study	RFQ will be initiated to hire architect and engineering consultants for planning and design. The deliverable will be a complete design criteria package to allow for design-build of the new facility	500,000
Operational Costs: Other		
Salary and Benefits		0
Expense/Equipment/Travel/Supplies/Other		0
Consultants/Contracted Services/Study		0
Fixed Capital Construction/Major Renovation:		
Construction/Renovation/Land/Planning Engineering		0
Total State Funds Requested (must equal total from question #6)		500,000

12. Program Performance

a. What specific purpose or goal will be achieved by the funds requested?

RFQ will be initiated to hire architect and engineering consultants for planning and design. The deliverable will be a complete design criteria package to allow for design-build of the new facility

b. What activities and services will be provided to meet the intended purpose of these funds?

A new, efficient medical examiner office will assist the State Attorney in criminal prosecutions, ensure timely determinations in accordance with Florida Statue Chapter 406.

c. What direct services will be provided to citizens by the appropriation project?

All medical examiner services as required in Chapter 406 of Florida Statute.

d. Who is the target population served by this project? How many individuals are expected to be served?

Over 700,000 residents of the District 1 area.

e. What is the expected benefit or outcome of this project? What is the methodology by which this outcome will be measured?

Better service, timely determinations on cause of death.

f. What are the suggested penalties that the contracting agency may consider in addition to its standard penalties for failing to meet deliverables or performance measures provided for the contract?

Reimbursement of any/all State funds if deliverable is not complete.



The Florida Senate

Local Funding Initiative Request

Fiscal Year 2021-2022

LFIR # 1647

- 13. The owners of the facility to receive, directly or indirectly, any fixed capital outlay funding. Include the relationship between the owners of the facility and the entity.**

DOMES, Inc. is the non-profit which oversees and manages all D1 Medical Examiner services.



The Florida Senate

Local Funding Initiative Request

Fiscal Year 2021-2022

LFIR # 1647

14. Requestor Contact Information

a. First Name Last Name
b. Organization
c. E-mail Address
d. Phone Number Ext.

15. Recipient Contact Information

a. Organization
b. Municipality and County
c. Organization Type
☐ For Profit Entity
☒ Non Profit 501(c)(3)
☐ Non Profit 501(c)(4)
☐ Local Entity
☐ University or College
☐ Other (please specify)

d. First Name Last Name
e. E-mail Address
f. Phone Number

16. Lobbyist Contact Information

a. Name
b. Firm Name
c. E-mail Address
d. Phone Number

Chapter 406, Florida Statutes, is the "Medical Examiners Act." [1] The act authorizes the creation of medical examiner districts throughout the state based on enumerated factors:

"[P]opulation, judicial circuits of the state, geographical size of the area of coverage, availability of trained personnel, death rate by both natural and unnatural causes, and similar related factors. No county may be divided in the creation of a district. However, this limitation shall not prohibit cooperative arrangements among the several districts." [2]

District medical examiners are appointed by the Governor for a three-year term of office. [3] The grounds for discipline for a medical examiner are set forth in section 406.075, Florida Statutes, and the Medical Examiners Commission is the entity responsible for reprimanding, placing on probation, removing, or suspending any medical examiner.

Medical examiner districts are distinct and independent statutory entities created for restricted purposes; they are not state agencies, as their prescribed powers are definitely confined to a less than statewide area. [4] Similarly, while there appear to be several medical examiner districts that encompass only one county, [5] the districts' mandates may reach across county lines. [6] Officers of a special district "are neither state nor county officers." [7] Thus, it is my opinion that a district medical examiner is a district officer rather than a state or county officer.

More particularly, Chapter 116, Florida Statutes, requires generally that state and county officers who collect funds that are due to the state or county must pay those moneys into the state or county treasury. This chapter also makes provision for reports to be made to the Department of Banking and Finance (now the Department of Financial Services) of fees and commissions of county or state fee officers. [8] This chapter does not apply to district medical examiners. Similarly, Chapter 145, Florida Statutes, which sets the compensation of county officials such as the clerk of circuit court, [9] the sheriff, [10] and the supervisor of elections, [11] does not prescribe the compensation of a district medical examiner.

Chapter 219, Florida Statutes, relates to the handling of county public money by state and county officers. The term "officer" for purposes of Chapter 219 is defined to mean "a county officer, including an officer whose authority is ordinarily confined to a district within a county, whose duties require or authorize him or her to collect public money[.]" As discussed above, a district medical examiner is not a county officer nor is his or her authority confined to "a district within a county." Thus, the provisions of this chapter do not apply.

Part III, Chapter 218, Florida Statutes, is the "Uniform Local Government Financial Management and Reporting Act." [12] For purposes of the act, a "local governmental entity" within the scope of these provisions includes a county agency, a municipality, or a special district as defined in section 189.403, Florida Statutes. Section 189.403(1), Florida Statutes, defines "Special district" to mean

"a local unit of special purpose, as opposed to general-purpose,

7. Must all income and revenues received by the chief medical examiner from the counties and other revenue sources be deposited in a public depository under Chapter 136, Florida Statutes; or may such funds, in whole or in part, be deposited in privately owned accounts, such as the chief medical examiner's professional association accounts?

8. Must associate medical examiners file financial disclosure statements pursuant to section 112.3145, Florida Statutes?

9. Is the medical examiner required to have an annual financial audit as described in section 11.45, Florida Statutes?

According to information you have submitted to this office and information provided by the District 21 Medical Examiner's Office, an audit of the medical examiner's office is currently underway. A number of questions have arisen concerning the nature of the medical examiner's office and the methods of accounting for funds of the office.

The District 21 Medical Examiner's Office covers Lee, Hendry and Glades counties. The physical facilities and the equipment for that office are located in and owned by Lee County. The medical examiner's office submits an annual budget to the county. The budget consists of anticipated operational expenses and professional fees of the medical examiner's office. The only fees specified in the budget are fees for autopsies, narratives and declined jurisdiction. An interlocal agreement entered into between the medical examiner's office and the counties in the district specify percentages of payment for budgeted operational expenses of the office. Each county directly compensates the medical examiner for the professional fees, toxicology and transportation costs attributable to that particular county.

The current chief medical examiner for District 21 was appointed by the Governor in 2001. No written contract was suggested or offered to her by Lee County. She operates the medical examiner's office as a professional association, as did her predecessors. The current chief medical examiner does not engage in a separate private medical practice at the medical examiner's office.

A number of the questions presented in your request require some determination or characterization of the working arrangement between the medical examiner and the county. It is clear from the information submitted both by you and by the medical examiner that no written contract or agreement exists defining the working roles and responsibilities of each party, nor has that office ever operated under such an agreement. This office has no ability to characterize the arrangement between these parties in the absence of any written contract or other document providing the terms under which the medical examiner's office operates. It is my understanding that the county and the medical examiner are currently negotiating a contract establishing the terms under which the District 21 Medical Examiner's Office and Lee County will operate in the future.

Question One

government within a limited boundary, created by general law, special act, local ordinance, or by rule of the Governor and Cabinet. The special purpose or purposes of special districts are implemented by specialized functions and related prescribed powers."

Among the legislative purposes for adoption of the act was to:

"(c) Improve communication and coordination between special districts and other local entities with respect to ad valorem taxation, non-ad valorem assessment collection, special district elections, and local government comprehensive planning.

(d) Move toward greater uniformity in special district elections and non-ad valorem assessment collection procedures at the local level without hampering the efficiency and effectiveness of the current procedures." [13]

While a medical examiner's district is in the nature of a special district because of its specialized function and geographical limitations, it is not a unit of government with the authority to impose taxes, nor is the medical examiner subject to election. Thus, it does not appear that a medical examiner district is subject to the management and reporting requirements of Part III, Chapter 218, Florida Statutes.

Question Two

I understand your second and third questions to be attempts to characterize the nature of fees coming into the Office of the District Medical Examiner.

Section 406.06(3), Florida Statutes, provides that:

"District medical examiners and associate medical examiners shall be entitled to compensation and such reasonable salary and fees as are established by the board of county commissioners in the respective districts."

Section 406.08, Florida Statutes, more clearly delineates who pays the medical examiner and what services are paid:

"(1) Fees, salaries, and expenses may be paid from the general funds or any other funds under the control of the board of county commissioners. The district medical examiner shall submit an annual budget to the board of county commissioners.

(2) In the event that an examination or autopsy is performed by the district medical examiner or his or her associate upon a body when the death occurred outside the district, the governmental body requesting the examination or autopsy shall pay the fee for such services.

(3) When a body is transported to the district medical examiner or his or her associate, transportation costs, if any, shall be borne by the county in which the death occurred. Nothing within this chapter shall preclude payment for services to the district medical examiner by the state, either in part or on a matching basis.

(4) Notwithstanding any provision of law to the contrary, if an examination, investigation, or autopsy is performed by the district

11G-1.001 Structure, Purpose.

(1) The Medical Examiners Commission is created within the Department of Law Enforcement (the Department). The Commission consists of nine persons appointed or selected as provided in Section 406.02(1), F.S.

(2) The Commission submits nominations to the Governor for appointment of a district medical examiner for each medical examiner district, as defined in this rule chapter, from nominees who are practicing physicians in pathology. In home rule counties which have established medical examiners under provisions of home rule charter, the medical examiner shall serve as the district medical examiner who would otherwise be appointed under this chapter.

Specific Authority 406.04 FS. Law Implemented 406.02, 406.06, 406.17 FS. History—New 10-18-81, Formerly 11G-1.01, Amended 7-6-99.

11G-1.001 Purpose, Definitions.

(1) The Medical Examiners Commission adopts rules pursuant to section 406.04, F.S., to comply with the requirements of chapter 406, part I, F.S., and rule division 11G, F.A.C., shall read in conjunction with chapter 406, part I, F.S.

(2) The following terms shall be deemed controlling for rule division 11G, F.A.C., and chapter 406, part I, F.S., unless otherwise defined in chapter 406, part I, F.S.:

(a) "Associate medical examiner" means associate medical examiner as defined in section 406.06, F.S.

(b) "Autopsy" means autopsy as defined in section 872.04(1), F.S.

(c) "Charge" of a dead body means administrative control over the location, transportation, and disposition of the body, and does not imply custody of the body.

(d) "Custody" of a dead body means physical possession of the body, and does not imply charge of the body.

(e) "District medical examiner" means district medical examiner as defined in section 406.06, F.S.

(f) "Identification photograph" means a still image of the face, ear, tattoo, or other distinctive mark of a dead human body, taken for identification purposes only and that includes a medical examiner case number.

(g) "Legally authorized person" means legally authorized person as defined in section 497.005(39), F.S.

(h) "Medical examiner" means a district medical examiner, associate medical examiner, or substitute medical examiner.

(i) "Medical Examiners Commission" means "Medical Examiners Commission" as defined in section 406.06, F.S.

(j) "Photograph of an autopsy" does not include an identification photograph, a photomicrograph, or a photoradiograph.

(k) "Photomicrograph" means a still image of tissue depicting histologic detail, captured through a microscope.

(l) "Photoradiograph" means an image produced by the capture of radiation or other forms of non-visible energy, which depicts the structure of objects through which the radiation or energy has passed.

(m) "Substitute medical examiner" means a medical examiner appointed pursuant to section 406.15, F.S.

Rulemaking Authority 406.04 FS. Law Implemented 406.02, 406.06, 406.17 FS. History—New 10-18-81, Formerly 11G-1.01, Amended 7-6-99, 5-21-12.

11G-5.004 Process for District Medical Examiner Candidate Nomination to the Governor.

(1) Policy Statement. Nominations for appointment as a district medical examiner shall be made only after solicitation of comments from city, county and state officials as well as from directors of funeral homes. Candidates nominated by the Medical Examiners Commission will be submitted to the Governor within 30 days after the Commission has voted on the matter. It is not the intent of the Commission to serve as the primary recruiting source for district medical examiner candidates, rather, the Commission intends that this responsibility should remain primarily within the district. The Commission will provide a medical examiner member of the Commission to participate in the candidate screening process at the district level.

(2) Procedure for Nomination for Reappointment of District Medical Examiners.

(a) Prior to the expiration of each incumbent district medical examiner's three year term of appointment, the Medical Examiners Commission staff shall survey by written correspondence the district's state attorney(s), public defender(s), sheriff(s), police chief(s), county commissioner(s), funeral home directors and a member of the local medical community. The survey will solicit input from each relevant to performance of the incumbent district medical examiner and ask for a "favorable" or "non-favorable" response regarding nomination for reappointment. Additionally, the survey will ask for suggestions for improving district medical examiner services. The survey shall request recommendations for the nomination of the incumbent or any other qualified candidate(s) to serve as district medical examiner.

(b) A summary of the survey results shall be provided to the Commission. Copies of the survey responses shall be forwarded to the incumbent district medical examiner by Commission staff. The incumbent, together with any other qualified candidates named in the survey responses, shall be notified in writing as to the date, time and place of the Commission meeting which will be considering the reappointment of the district medical examiner.

(c) The Commission chairman may request establishment of a committee, as referred to in paragraph 11G-5.004(3)(b), F.A.C., to address concerns regarding the incumbent district medical examiner raised in the survey responses or to initiate a search for other candidates for nomination by the Commission.

(3) Procedure to fill a District Medical Examiner Vacancy.

(a) The Governor will be notified by the Commission upon determination that a district medical examiner position has become vacant or is anticipated to become vacant. The Commission shall also notify the respective state attorney(s), public defender(s), sheriff(s), police chief(s), county commission(s) and funeral home directors for that medical examiner district, requesting that names of potential candidates for the position of district medical examiner be submitted to the candidate search committee established in paragraph 11G-5.004(3)(b), F.A.C.

(b) Within 30 days of being notified of a vacancy or anticipated vacancy, the Chairman of the Commission shall call for a district candidate search committee to be established and appoint a chairman. The search committee shall consist of invited representatives from the offices of the state attorney(s), public defender(s), sheriff(s), police chief(s), county commission(s), funeral homes and a representative of the local medical community from within the bounds of that particular medical examiner district and a physician member of the Medical Examiners Commission or other medical examiner designated by the Chairman. The search committee shall be requested to:

1. Seek applications from interested candidates who are licensed physicians and experienced practitioners of pathology who possess qualifications to take the examination or already possess the primary certification offered by the American Board of Pathology, American Osteopathic Board of Pathology, or equal qualification rendered by a non-United States medical specialty certifying agency.

2. Establish an interview team, which shall have a quorum of three participants, to interview interested candidates meeting minimum position qualifications. If the district includes a medical school, the dean of the medical school should be invited to participate as a member of the interview team.

3. Assure that the candidate(s) recommended to the Commission for nomination as district medical examiner is in agreement with the respective county representatives regarding the medical examiner budget as outlined in section 406.06(3), F.S.

4. Review background information about the final candidate(s) from present and past sources, to include a criminal history check, comments of county medical associations, employment references, local hospitals, government agencies and funeral homes with which the candidate(s) has a prior working relationship. Background inquiries should incorporate information on work performance and working relationships, as well as the candidate(s) reasons for and circumstances of leaving employment.

5. Submit an interview package to the Medical Examiners Commission staff for each candidate recommended to the Commission for nomination consisting of: pertinent correspondence regarding the candidate(s); results of background inquiries;

MEDICAL EXAMINERS COMMISSION

Stephen J. Nelson, M.A., M.D., F.C.A.P.

Chairman

District 10 Medical Examiner
1021 Jim Keene Boulevard
Winter Haven, Florida 33880
(863) 298-4600

email: StephenNelson@polk-county.net

First Term: 2/13/2014-7/1/2016

Second Term: 08/29/2018-07/01/2020

Barbara C. Wolf, M.D.

District 5 Medical Examiner

809 Pine Street
Leesburg, Florida 34748
(352) 326-5961

email: barbara.wolf@marioncountyfl.org

First Term: 8/7/2015-7/1/2019

Vacant

Sheriff

Robin Giddens Sheppard, L.F.D.

Funeral Director/Vice President

Hardage-Giddens Funeral Homes

4801 San Jose Boulevard

Jacksonville, Florida 32207

(904) 737-7171

email: Robin.Sheppard@dignitymemorial.com

First Term: 8/15/2013-7/1/2016

Second Term: 08/29/2018-07/01/2020

Mr. Kenneth T. Jones

State Registrar

Florida Department of Health

Bureau of Vital Statistics

Post Office Box 210

Jacksonville, Florida 32231

(904) 359-6900 ext. 1001

email: Ken.Jones@flhealth.gov

Term: Not Applicable

Honorable Charlie Cofer, J.D.

Public Defender, 4th Judicial Circuit

407 N. Laura Street

Jacksonville, Florida 32202

(904) 255-4673

email: ccofer@pd4.coj.net

First Term: 08/29/2018-07/01/2021

Nick Cox, J.D.

Statewide Prosecutor

Office of the Attorney General

3507 E. Frontage Road, Suite 325

Tampa, Florida 33607

813-287-7960

email: nick.cox@myfloridalegal.com

Term: Not Applicable

Vacant

State Attorney

Honorable Carol Whitmore

Manatee County Commission

Board of County Commissioners

Post Office Box 1000

Bradenton, Florida 34206-1000

(941) 745-3704

email: carol.whitmore@mymanatee.org

First Term: 8/15/2013-7/1/2017

Second Term: 08/29/2018-07/01/2021

STAFF

Medical Examiners Commission
Florida Department of Law Enforcement
Post Office Box 1489
Tallahassee, Florida 32302
(850) 410-8600

Bureau Chief Brett Kirkland
(850) 410-8600
brettkirkland@fdle.state.fl.us

Government Analyst II Megan Neel
(850) 410-8664
meganneel@fdle.state.fl.us

Government Analyst II Chad Lucas
(850) 410-8609
stevenchadlucas@fdle.state.fl.us

General Counsel James Martin, J.D.
(850) 410-7676
jamesmartin@fdle.state.fl.us

CHAPTER 406
MEDICAL EXAMINERS; DISPOSITION OF HUMAN REMAINS
PART I
MEDICAL EXAMINERS
(ss. 406.01-406.17)

Section pertaining to payment

406.08 Payment of fees, salaries, and expenses; transportation costs; facilities.

- (1) Fees, salaries, and expenses may be paid from the general funds or any other funds under the control of the board of county commissioners. The district medical examiner shall submit an annual budget to the board of county commissioners.
- (2) In the event that an examination or autopsy is performed by the district medical examiner or his or her associate upon a body when the death occurred outside the district, the governmental body requesting the examination or autopsy shall pay the fee for such services.
- (3) When a body is transported to the district medical examiner or his or her associate, transportation costs, if any, shall be borne by the county in which the death occurred. Nothing within this chapter shall preclude payment for services to the district medical examiner by the state, either in part or on a matching basis.
- (4) Notwithstanding any provision of law to the contrary, if an examination, investigation, or autopsy is performed by the district medical examiner or his or her associate upon the body of a person who died while in the custody of a facility or institution operated by a state agency, that state agency shall pay for such services and for any costs of transporting the body to the district medical examiner.
- (5) Autopsy and laboratory facilities utilized by the district medical examiner or his or her associates may be provided on a permanent or contractual basis by the counties within the district.

History.s. 5, ch. 70-232; s. 144, ch. 77-104; s. 3, ch. 81-89; s. 1, ch. 85-268; s. 4, ch. 87-359; s. 28, ch. 97-103.



OFFICE OF THE
**MEDICAL
EXAMINER**
DISTRICT 19

Patricia A. Aronica, M.D.
Chief Medical Examiner

Adrienne E. Sauder, M.D.
Associate Medical Examiner

Raman Baldzizhar, M.D.
Associate Medical Examiner

March 22, 2022

Ms. Jennifer Manning
Director of Management & Budget
Martin County Administration Center
2401 SE Monterey Road
Stuart, Florida 34996

Dear Ms. Manning:

Enclosed is the District 19 Medical Examiner's fiscal year 2022-2023 budget proposal for approval by the Martin County Board of County Commissioners.

The overall request before applying the credit of unused funds is \$4,125,180.00, an increase of 37.60%.

The adjusted budget request after deducting the credit of unused funds is an increase of 44.06% for Martin County. This percentage increase is in part due to an increase of operating expenses, but most of the increase stems from the addition of four new positions, and a new database.

Since 2012 our office has had a 53% increase in workload. Cremation authorizations have increased 64%, the total district deaths have increased by 60% and the number of cases investigated and determined to be Non-Medical Cases has increased by 471% (See attached Chart B). **In comparison to 2020 there has been a 21% increase in autopsies.** Population growth has increased in recent years, and the growth trend is projected to continue. There are no signs of the workload decreasing, and here recently a trend has emerged in the number of complex cases that our office receives.

Operating expenses in this budget, such as Body Transport Services, Toxicology, and Morgue Supplies have increased due to workload volume, and vendor price increases. In addition, four new positions have been added to compensate for the ever-growing workload as stated above. The proposed positions consist of a full-time, and part-time Associate Medical Examiner. A Forensic Science Technician, and a Medical Records Clerk. The addition of these positions will not only alleviate the stress off an already stretched thin staff, but they are crucial for our office to be able to maintain the level of excellence at which we are accustomed to providing to our families. Items such as office furniture, equipment, and supplies for these additional positions have been taken into consideration and are included in this budget proposal.

2500 South 35th Street ~ Fort Pierce, FL 34981-5573
(772) 464-7378 • Fax (772) 464-2409

SERVING . . . INDIAN RIVER, MARTIN, OKEECHOBEE AND ST. LUCIE COUNTIES

As mentioned in the previous budget year our office is in the process of becoming accredited by the National Association of Medical Examiners (NAME). The current database that houses all our cases is antiquated. The database does not meet the criteria for our office to become accredited, and it is not designed for the specific needs of a Medical Examiner's Office. Servicing the current database has proven to be challenging and making any kind of modifications to meet our needs has been exhausted. We have included the cost of a new database and have increased our Office Equipment Maintenance and Service budget by \$35,350.00. This will be a recurring annual fee to maintain the database. Having a new database assures we meet current and future accreditation standards and satisfies service needs.

Finally, a three percent COLA increase has been included in this budget proposal for all employees.

It has been a privilege to serve as the District 19 Medical Examiner. I look forward to continuing to serve our families, and to see what the future holds for our office.

Most Sincerely,

A handwritten signature in dark ink, appearing to read 'Pat Aronica', with a horizontal line extending to the right.

Patricia A. Aronica, M.D.
District Chief Medical Examiner

Attachments - FY2022-23 Budget Packet
Chart B

CHART B

**District 19 Medical Examiner's Office
2012-2021**

Year	Total Case Workload*	Total Cremation Authorizations**	Total District Deaths***	Total Cases Investigated but Bodies Not Viewed****
2012	789	4,650	6,425	190
2013	850	4,991	6,704	292
2014	900	5,277	7,061	483
2015	933	5,409	7,040	463
2016	1,043	5,558	7,312	544
2017	1,034	5,710	7,413	621
2018	1,107	5,822	7,506	725
2019	988	6,165	7,756	813
2020	1,378	6,781	9,237	1,009
2021	1,200	7,617	10,272	1,085

*Total case workload includes autopsies, inspections and consultation cases and has increased by 53% since 2012.

**Total cremation authorizations have increased 64% since 2012.

***Total district deaths have increased 60% since 2012.

**** Total cases investigated but bodies not viewed increased by 471% in 2021.

Please Note that in 2020 the Total Case Workload Reflects 350 COVID Cases

**OFFICE OF THE MEDICAL EXAMINER
DISTRICT 19, FLORIDA**



**BUDGET PROPOSAL
FOR FISCAL YEAR 2022-2023**

**SUBMITTED BY:
PATRICIA A. ARONICA, M.D.
CHIEF MEDICAL EXAMINER
2500 South 35th Street
Fort Pierce, FL 34981
(772) 464-7378**

**OFFICE OF THE MEDICAL EXAMINER
DISTRICT 19, FLORIDA**

BUDGET PROPOSAL FOR FISCAL YEAR 2022-2023

TABLE OF CONTENTS

Itemized Budget Proposal for FY Year 2022-2023
 Salary and Benefits Calculation Worksheet
 Budget History 1988 to Present
 County Share Calculation for 2021
 County Share History
 Annual Incidence of Death
 Annual Autopsy Examinations
 % of Increase for Each County

OFFICE OF THE MEDICAL EXAMINER, DISTRICT 19, FLORIDA
BUDGET PROPOSAL FOR FISCAL YEAR 2022-2023

	DISTRICT	IRC	MC	OC	SLC
	100%	24.36%	22.42%	7.11%	46.11%
COUNTY SHARE SERVICES					
District Medical Examiner	339,488	82,686	76,128	24,139	156,535
Associate Medical Examiner	260,000	63,326	58,303	18,487	119,883
Associate Medical Examiner	220,731	53,762	49,498	15,695	101,777
Associate Medical Examiner	220,731	53,762	49,498	15,695	101,777
Associate Medical Examiner-Part Time	149,500	36,412	33,524	10,630	68,933
Operations Manager	73,500	17,902	16,482	5,226	33,890
Chief Medical Examiner Investigator	64,050	15,600	14,363	4,554	29,533
Medical Examiner Investigator	40,906	9,963	9,173	2,909	18,861
Medical Examiner Investigator	40,906	9,963	9,173	2,909	18,861
Medical Examiner Investigator	40,360	9,830	9,050	2,870	18,610
Medical Examiner Investigator	40,360	9,830	9,050	2,870	18,610
Forensic Science Technician	61,000	14,857	13,679	4,337	28,127
Forensic Science Technician	40,491	9,862	9,080	2,879	18,670
Forensic Science Technician	37,674	9,176	8,448	2,679	17,371
Forensic Science Technician	37,674	9,176	8,448	2,679	17,371
Office Manager	62,830	15,303	14,089	4,468	28,970
Medical Records Clerk II	37,620	9,163	8,436	2,675	17,346
Medical Records Clerk II	35,414	8,625	7,941	2,518	16,329
Medical Records Clerk II	34,026	8,287	7,630	2,419	15,689
Overtime for Investigators	12,856	3,131	2,883	914	5,928
Benefit Package	1,139,832	277,619	255,600	81,048	525,565
SERVICES SUBTOTAL	2,989,949	728,236	670,478	212,600	1,378,636
OPERATING EXPENSE					
IRSC Lease Morgue	1	0	0	0	1
Audit Accounting Service	6,100	1,486	1,368	434	2,813
Automobile Travel / Gas / Repairs	10,000	2,436	2,242	711	4,611
Body Transport	145,000	35,316	32,515	10,310	66,858
Books	1,200	292	269	85	553
Business Supplies	25,000	6,089	5,606	1,778	11,527
Business Telephone	2,000	487	448	142	922
Cellular Telephone	2,500	609	561	178	1,153
Consultant Fees (Odontology/Human I.D. Lab)	7,000	1,705	1,570	498	3,228
Education and Meetings	8,000	1,948	1,794	569	3,689
Insurance - Automobile / Umbrella	7,500	1,827	1,682	533	3,458
Insurance - Contents Office	3,200	779	718	228	1,475
Insurance - Employee Practices Liab.	7,300	1,778	1,637	519	3,366
Insurance - Profess. & Gen. Liab. Doctors	35,000	8,525	7,849	2,489	16,138
Insurance-General Liability Office	3,000	731	673	213	1,383
Material Center	500	122	112	36	231
Utilities	35,000	8,525	7,849	2,489	16,138
Legal Fees	15,000	3,653	3,364	1,067	6,916
Morgue Equip. Repairs / Replacement	11,920	2,903	2,673	848	5,496
Morgue Supplies	50,000	12,178	11,212	3,555	23,055
Office Cleaning	3,800	926	852	270	1,752
Office Equipment Maintenance & Service	67,750	16,501	15,193	4,817	31,239
Photography Expense	950	231	213	68	438
Postage / FedEx	1,500	365	336	107	692

Professional Dues Subscriptions	1,000	244	224	71	461
Professional Memberships / License	4,000	974	897	284	1,844
Solid Waste Disposal	11,000	2,679	2,487	782	5,072
Toxicology	250,000	60,890	56,061	17,776	115,273
Transcription Service	8,000	1,948	1,794	569	3,689
Reserve for Compensated Leave Absences	94,000	22,895	21,079	6,684	43,342
New Database Module (Equipment > \$1,000)	62,400	15,198	13,993	4,437	28,772
New Database Configuration	140,610	34,247	31,531	9,998	64,834
Office Furniture-Desks(2)	5,000	1,218	1,121	356	2,305
Microscope New Dr.	10,000	2,436	2,242	711	4,611
Contingency	100,000	24,356	22,424	7,110	46,109
OPERATING SUBTOTAL	1,135,231	276,498	254,569	80,720	523,444
 TOTAL REQUEST	 \$4,125,180	 1,004,734	 925,046	 293,320	 1,902,081
Credit Unused Funds*	(975,000)	(237,472)	(218,638)	(69,327)	(449,563)
ADJUSTED REQUEST	3,150,180	767,261	706,408	223,993	1,452,518
Monthly Request	262,515	63,938	58,867	18,666	121,043
*22/23 County Share	100%	24.36%	22.42%	7.11%	46.11%

SALARY AND BENEFITS CALCULATION WORKSHEET

October 1, 2022 - September 30, 2023

Employee Position	Annual Salary	S.S. 6.20%	Medicare 1.45%	Retiremt. 11.11%	Health Insurance	Unemploy. 0.33%	Health Ins. Admin. Fees 2.5%	Life 0.0059 Per 1000	Work's Comp. @ 0.25%	Total Salary	Total Benefits	Total Salary and Benefits
District Medical Examiner*	339,488	8,537	4,923	92,205	26,538	1,120	663	2,404	5,805	339,488	142,195	481,683
Associate Medical Examiner*	260,000	8,537	3,770	70,616	26,538	858	663	1,841	4,446	260,000	117,269	377,269
Associate Medical Examiner*	220,731	8,537	3,201	59,951	26,538	728	663	1,563	3,775	220,731	104,956	325,687
Associate Medical Examiner*	220,731	8,537	3,201	59,951	26,538	728	663	1,563	3,775	220,731	104,955	325,686
Associate Medical Examiner*	149,500	8,537	2,168	40,604	0	493	0	1,058	2,556	149,500	55,418	204,918
Operations Manager*	73,500	4,567	1,066	19,963	26,538	243	663	520	184	73,500	53,733	127,233
Chief ME Investigator *	64,050	3,971	929	17,396	26,538	211	663	453	160	64,050	50,322	114,372
ME Investigator*	40,906	2,536	593	11,110	26,538	135	663	290	102	40,906	41,968	82,874
ME Investigator *	40,906	2,536	593	11,110	26,538	135	663	290	102	40,906	41,968	82,874
ME Investigator *	40,360	2,502	585	10,962	26,538	133	663	286	101	40,360	41,771	82,131
ME Investigator*	40,360	2,502	585	10,962	26,538	133	663	286	101	40,360	41,771	82,131
Forensic Science Technician*	61,000	3,782	885	16,568	26,538	201	663	432	1,043	61,000	50,112	111,112
Forensic Science Technician*	40,491	2,510	587	10,997	26,538	134	663	287	692	40,491	42,409	82,900
Forensic Science Technician*	37,674	2,336	546	10,232	26,538	124	663	267	644	37,674	41,351	79,025
Forensic Science Technician*	37,674	2,336	546	10,232	26,538	124	663	267	644	37,674	41,351	79,025
Office Manager	62,830	3,895	911	6,980	26,538	207	663	445	157	62,830	39,798	102,628
Medical Records Clerk II	37,620	2,332	545	4,180	26,538	124	663	266	94	37,620	34,744	72,364
Medical Records Clerk II	35,414	2,196	514	3,934	26,538	117	663	251	89	35,414	34,301	69,715
Medical Records Clerk II	34,026	2,110	493	3,780	26,538	112	663	241	85	34,026	34,023	68,049
Overtime for Investigators	12,856	797	186	3,492	0		0	91	32	12,856	4,598	17,454
Health Insurance - Retirees					20,820						20,820	20,820
	1,850,117	83,586	26,827	475,224	498,504	6,063	11,941	13,099	24,588	1,850,117	1,139,832	2,989,949

*Special Risk Rate Is 27.16%

OFFICE OF THE MEDICAL EXAMINER
DISTRICT 19, FLORIDA
BUDGET HISTORY

FISCAL YEAR	TOTAL BUDGET	NET CHANGE	PERCENT CHANGE	CREDIT FUNDS
1988-89	\$677,988.00			
1989-90	\$641,527.00	-36,461	-5.38%	
1990-91	\$690,290.00	48,763	7.60%	
1991-92	\$642,373.00	-47,917	-6.94%	
1992-93	\$701,798.00	59,425	9.25%	\$319,040.00
1993-94	\$724,255.00	22,457	3.20%	
1994-95	\$760,706.00	36,451	5.03%	\$69,656.00
1995-96	\$803,998.00	43,292	5.69%	\$48,249.00
1996-97	\$783,320.00	-20,678	-2.57%	\$48,229.00
1997-98	\$800,387.00	17,067	2.18%	\$79,668.00
1998-99	\$804,860.00	4,473	0.56%	\$91,453.00
1999-00	\$840,639.00	35,779	4.45%	\$91,453.00
2000-01	\$928,133.00	87,494	10.41%	\$44,407.00
2001-02	\$970,129.00	41,996	4.52%	\$27,812.00
2002-03	\$1,058,663.00	88,534	9.13%	\$31,700.00
2003-04	\$1,148,624.00	89,961	8.50%	\$21,990.00
2004-05	\$1,196,481.00	47,857	4.17%	\$8,608.00
2005-06	\$1,235,460.00	38,979	3.26%	\$172,494.00
2006-07	\$1,314,847.00	79,387	6.43%	\$97,703.00
2007-08	\$1,382,308.00	67,461	5.13%	\$214,570.00
2008-09	\$1,465,531.00	83,223	6.02%	\$176,301.00
2009-10	\$1,474,670.00	9,139	0.62%	\$186,716.00
2010-11	\$1,422,719.00	-51,951	-3.52%	\$250,000.00
2011-12	\$1,538,835.00	116,116	8.16%	\$287,963.00
2012-13	\$1,448,519.00	-90,316	-5.87%	\$283,901.00
2013-14	\$1,519,747.00	71,228	4.92%	\$451,599.00
2014-15	\$1,519,212.00	-535	-0.04%	\$379,081.00
2015-16	\$1,575,401.00	56,189	3.70%	\$353,382.00
2016-17	\$1,802,687.00	227,286	14.43%	\$337,757.00
2017-18	\$2,116,231.00	313,544	17.39%	\$342,370.00
2018-19	\$2,316,139.00	199,908	9.45%	\$421,922.00
2019-20	\$2,968,259.00	652,120	28.16%	\$1,157,665.00
2020-21	\$2,830,062.00	-138,197	-4.66%	\$875,000.00
2021-22	\$2,997,901.00	167,839	5.93%	\$925,000.00
2022-23	\$4,125,180.00	1,127,279	37.60%	\$975,000.00

**OFFICE OF THE MEDICAL EXAMINER
DISTRICT 19, FLORIDA**

COUNTY SHARE CALCULATION FOR 2021

	INDIAN RIVER	MARTIN	OKEECHOBEE	SAINT LUCIE
A. AUTOPSIES IN COUNTY	168	157	59	370
B. TOTAL AUTOPSIES IN DISTRICT	754	754	754	754
AUTOPSY RATIO (A/B)	22.28%	20.82%	7.82%	49.07%
AUTOPSY RATIO X 0.5	11.14%	10.41%	3.91%	24.54%
C. DEATHS IN COUNTY	2,715	2,468	657	4,432
D. TOTAL DEATHS IN DISTRICT	10,272	10,272	10,272	10,272
DEATH RATIO (C/D)	26.43%	24.03%	6.40%	43.15%
DEATH RATIO X 0.5	13.22%	12.01%	3.20%	21.57%
E. COUNTY AUTOPSY AND DEATH RATIO	24.36%	22.42%	7.11%	46.11%
F. DISTRICT AUTOPSY AND DEATH RATIO	100.00%	100.00%	100.00%	100.00%
THE COUNTY TO DISTRICT RATIO (E/F)	24.36%	22.42%	7.11%	46.11%
THE COUNTY PERCENTAGE (E/F X 100)	24.36%	22.42%	7.11%	46.11%

**OFFICE OF THE MEDICAL EXAMINER
DISTRICT 19, FLORIDA**

COUNTY SHARE HISTORY

YEAR	INDIAN RIVER	MARTIN	OKEECHOBEE	SAINT LUCIE
1988	24.70%	26.40%	10.00%	38.90%
1989	25.20%	25.80%	8.30%	40.60%
1990	27.10%	27.10%	9.40%	36.40%
1991	24.90%	27.30%	9.10%	38.70%
1992	23.00%	27.30%	9.10%	40.60%
1993	26.20%	29.20%	6.80%	37.80%
1994	24.70%	27.80%	8.50%	39.00%
1995	24.70%	27.30%	7.30%	40.70%
1996	23.60%	25.70%	8.50%	42.10%
1997	24.40%	28.00%	8.90%	38.60%
1998	27.00%	25.20%	9.90%	37.90%
1999	26.10%	28.20%	8.70%	37.00%
2000	24.40%	28.50%	8.30%	38.80%
2001	27.40%	25.80%	7.50%	39.30%
2002	26.30%	27.50%	7.50%	38.70%
2003	26.50%	28.30%	7.10%	38.10%
2004	26.10%	30.00%	7.50%	36.40%
2005	26.80%	28.30%	8.30%	36.60%
2006	26.30%	28.80%	8.10%	36.80%
2007	26.50%	26.60%	8.40%	38.50%
2008	27.90%	24.80%	7.40%	39.90%
2009	26.70%	24.70%	7.10%	41.50%
2010	24.20%	23.30%	7.40%	45.10%
2011	24.37%	26.68%	6.32%	42.63%
2012	25.81%	25.73%	5.61%	42.85%
2013	26.20%	24.65%	7.56%	41.60%
2014	26.53%	24.86%	6.27%	42.34%
2015	25.32%	25.42%	6.00%	43.26%
2016	23.83%	25.40%	6.75%	44.02%
2017	23.99%	25.78%	6.87%	43.36%
2018	24.96%	23.68%	6.71%	44.65%
2019	25.04%	23.82%	6.39%	44.75%
2020	23.44%	23.66%	7.44%	45.47%
2021	24.36%	22.42%	7.11%	46.11%

**OFFICE OF THE MEDICAL EXAMINER
DISTRICT 19, FLORIDA**

ANNUAL INCIDENCE OF DEATH

YEAR	INDIAN RIVER	MARTIN	OKEECHOBEE	SAINT LUCIE	DISTRICT
1988	999	1,044	252	1,370	3,665
1989	1,300	1,088	274	1,443	4,105
1990	1,144	1,196	273	1,402	4,015
1991	1,052	1,205	301	1,555	4,113
1992	1,156	1,233	277	1,481	4,147
1993	1,329	1,336	270	1,593	4,528
1994	1,376	1,420	294	1,751	4,841
1995	1,401	1,452	310	1,818	4,981
1996	1,325	1,462	346	1,837	4,970
1997	1,368	1,466	352	1,806	4,992
1998	1,507	1,499	367	1,919	5,292
1999	1,476	1,608	336	1,800	5,220
2000	1,521	1,622	335	1,815	5,293
2001	1,648	1,615	296	1,955	5,514
2002	1,664	1,572	345	2,026	5,607
2003	1,739	1,741	332	2,134	5,946
2004	1,624	1,741	357	2,072	5,794
2005	1,640	1,836	362	1,985	5,823
2006	1,708	1,825	379	2,001	5,913
2007	1,756	1,717	378	2,184	6,035
2008	1,805	1,625	349	2,360	6,139
2009	1,787	1,637	330	2,518	6,272
2010	1,765	1,670	381	2,532	6,348
2011	1,805	1,681	339	2,554	6,379
2012	1,815	1,687	342	2,581	6,425
2013	1,870	1,810	376	2,648	6,704
2014	2,079	1,869	351	2,762	7,061
2015	1,991	1,898	368	2,783	7,040
2016	2,045	1,991	398	2,878	7,312
2017	2,050	1,972	426	2,965	7,413
2018	2,155	1,863	389	3,099	7,506
2019	2,182	1,916	403	3,255	7,756
2020	2,380	2,330	555	3,978	9,243
2021	2,715	2,468	657	4,432	10,272

**OFFICE OF THE MEDICAL EXAMINER
DISTRICT 19, FLORIDA**

ANNUAL AUTOPSY EXAMINATIONS

YEAR	INDIAN RIVER	MARTIN	OKEECHOBEE	SAINT LUCIE	DISTRICT
1988	100	109	59	182	450
1989	89	96	39	179	403
1990	100	95	47	148	390
1991	86	98	46	164	394
1992	74	103	47	187	411
1993	107	134	35	187	463
1994	102	127	53	202	484
1995	102	122	40	216	480
1996	84	90	41	193	408
1997	85	106	43	163	397
1998	99	86	50	154	389
1999	100	107	46	164	417
2000	91	118	47	194	450
2001	138	132	54	243	567
2002	136	164	57	245	602
2003	145	168	53	246	612
2004	144	179	53	220	596
2005	143	140	58	220	561
2006	138	154	57	229	578
2007	138	143	61	235	577
2008	160	140	56	250	606
2009	155	144	55	268	622
2010	107	105	45	262	519*
2011	109	144	39	241	533*
2012	115	124	29	224	492*
2013	134	122	52	239	547*
2014	128	126	41	247	543*
2015	119	127	36	250	532*
2016	127	152	52	314	645
2017	127	156	50	292	625
2018	144	153	56	326	679
2019	133	139	46	288	606
2020	131	137	55	297	620
2021	168	157	59	370	754

*Reflects less autopsies due to more external examinations and consultations performed in order to be in compliance with future accreditation agencies.

% of Increase for Each County

Indian River County

Fiscal Year	Adjusted Request	Increase	% Change	# of Autopsies
1996-97	181,567			102
1997-98	170,090	(11,477)	-6.32%	84
1998-99	174,071	3,981	2.34%	85
1999-00	202,280	28,209	16.21%	99
2000-01	230,652	28,372	14.03%	100
2001-02	229,202	(1,450)	-0.63%	91
2002-03	281,799	52,597	22.95%	138
2003-04	288,680	6,881	2.44%	136
2004-05	314,709	26,029	9.02%	145
2005-06	288,924	(25,785)	-8.19%	144
2006-07	338,413	49,489	17.13%	143
2007-08	319,289	(19,124)	-5.65%	138
2008-09	341,117	21,828	6.84%	138
2009-10	362,326	21,209	6.22%	160
2010-11	313,616	(48,710)	-13.44%	155
2011-12	295,512	(18,104)	-5.77%	107
2012-13	283,817	(11,695)	-3.96%	109
2013-14	275,689	(8,128)	-2.86%	115
2014-15	298,663	22,974	8.33%	134
2015-16	324,199	25,536	8.55%	128
2016-17	370,991	46,792	14.43%	119
2017-18	422,690	51,699	13.94%	127
2018-19	454,367	31,677	7.49%	127
2019-20	451,906	(2,461)	-0.54%	144
2020-21	489,550	37,644	8.33%	133
2021-22	485,812	(3,738)	-0.76%	131
2022-23	767,261	281,449	57.93%	168

Martin County

Fiscal Year	Adjusted Request	Increase	% Change	# of Autopsies
1996-97	200,178			122
1997-98	185,225	(14,953)	-7.47%	90
1998-99	197,552	12,327	6.66%	106
1999-00	186,308	(11,244)	-5.69%	86
2000-01	249,211	62,903	33.76%	107
2001-02	269,478	20,267	8.13%	118
2002-03	264,197	(5,281)	-1.96%	132
2003-04	299,284	35,087	13.28%	164
2004-05	336,383	37,099	12.40%	168
2005-06	335,577	(806)	-0.24%	179
2006-07	357,187	21,610	6.44%	140
2007-08	347,234	(9,953)	-2.79%	154
2008-09	339,938	(7,296)	-2.10%	143
2009-10	311,944	(27,994)	-8.24%	140
2010-11	284,912	(27,032)	-8.67%	144
2011-12	287,422	2,510	0.88%	105
2012-13	310,720	23,298	8.11%	144
2013-14	274,834	(35,886)	-11.55%	124
2014-15	281,055	6,221	2.26%	122
2015-16	303,773	22,718	8.08%	126
2016-17	372,330	68,557	22.57%	127
2017-18	450,517	78,187	21.00%	152
2018-19	488,347	37,830	8.40%	156
2019-20	428,688	(59,659)	-12.22%	153
2020-21	465,703	37,015	8.63%	139
2021-22	490,349	24,646	5.29%	137
2022-23	706,408	216,059	44.06%	157

Okeechobee County

Fiscal Year	Adjusted Request	Increase	% Change	# of Autopsies
1996-97	\$53,662.00			40
1997-98	\$61,261.00	7,599	14.16%	41
1998-99	\$63,493.00	2,232	3.64%	43
1999-00	\$74,169.00	10,676	16.81%	50
2000-01	\$76,886.00	2,716	3.66%	46
2001-02	\$77,767.00	882	1.15%	47
2002-03	\$76,642.00	(1,125)	-1.45%	54
2003-04	\$82,295.00	5,653	7.38%	57
2004-05	\$84,304.00	2,009	2.44%	53
2005-06	\$83,097.00	(1,207)	-1.43%	53
2006-07	\$105,390.00	22,293	26.83%	58
2007-08	\$99,249.00	(6,141)	-5.83%	57
2008-09	\$108,472.00	9,223	9.29%	61
2009-10	\$94,001.00	(14,471)	-13.34%	56
2010-11	\$80,013.00	(13,988)	-14.88%	55
2011-12	\$93,428.00	13,415	16.77%	45
2012-13	\$73,604.00	-19,824	-21.22%	39
2013-14	\$59,923.00	-13,681	-18.59%	29
2014-15	\$86,165.00	26,242	43.79%	52
2015-16	\$76,593.00	-9,572	-11.11%	41
2016-17	\$87,853.00	11,260	14.70%	36
2017-18	\$119,781.00	31,928	36.34%	52
2018-19	\$130,196.00	10,415	8.70%	50
2019-20	\$121,581.00	-8,615	-6.62%	56
2020-21	\$124,994.00	3,413	2.81%	46
2021-22	\$154,164.00	29,170	23.34%	55
2022-23	\$223,993.00	69,829	45.30%	59

St. Lucie County

Fiscal Year	Adjusted Request	Increase	% Change	# of Autopsies
1996-97	\$299,182.00			216
1997-98	\$303,423.00	4,241	1.42%	193
1998-99	\$275,375.00	(28,048)	-9.24%	163
1999-00	\$283,941.00	8,566	3.11%	154
2000-01	\$326,979.00	43,038	15.16%	164
2001-02	\$365,869.00	38,890	11.89%	194
2002-03	\$404,325.00	38,456	10.51%	243
2003-04	\$420,265.00	15,940	3.94%	245
2004-05	\$452,477.00	32,212	7.66%	246
2005-06	\$400,368.00	(52,109)	-11.52%	220
2006-07	\$461,154.00	60,786	15.18%	220
2007-08	\$446,966.00	(14,188)	-3.08%	229
2008-09	\$499,703.00	52,737	11.80%	235
2009-10	\$519,682.00	19,979	4.00%	250
2010-11	\$494,179.00	(25,503)	-4.91%	268
2011-12	\$574,510.00	80,331	16.26%	262
2012-13	\$495,624.00	-78,886	-13.73%	241
2013-14	\$457,702.00	-37,922	-7.65%	224
2014-15	\$474,248.00	16,546	3.62%	239
2015-16	\$517,454.00	43,206	9.11%	247
2016-17	\$633,757.00	116,303	22.48%	250
2017-18	\$780,873.00	147,116	23.21%	314
2018-19	\$821,308.00	40,435	5.18%	292
2019-20	\$808,419.00	-12,889	-1.57%	326
2020-21	\$874,815.00	66,396	8.21%	288
2021-22	\$942,577.00	67,762	7.75%	297
2022-23	\$1,452,518.00	509,941	54.10%	370

RESOLUTION NO. 22 - XXX

A RESOLUTION OF THE BOARD OF COUNTY COMMISSIONERS OF ST. LUCIE COUNTY, FLORIDA DIRECTING THE COUNTY ADMINISTRATOR TO ENTER INTO DISCUSSIONS LEADING TO AN AGREEMENT TO DESIGN AND CONSTRUCT A NEW MEDICAL EXAMINER FACILITY TO BE LOCATED ON THE CAMPUS OF INDIAN RIVER STATE COLLEGE IN FORT PIERCE, FLORIDA; SUPPORTING REQUESTS FOR STATE AND FEDERAL FINANCIAL ASSISTANCE; PROVIDING FOR AN EFFECTIVE DATE

WHEREAS, effective October 1, 2018, the District 19 Counties (collectively Indian River County, Martin County, Okeechobee County and St. Lucie County) entered into a Second Amended and Restated Interlocal Agreement ("Agreement") that provides for cost sharing of medical examiner services and related matters; and

WHEREAS, the Medical Examiner for District 19 has declared a need for a new facility to properly complete her statutory duties; and

WHEREAS, Section 406.08(5), Florida Statutes, provides that autopsy and laboratory facilities utilized by the district medical examiner or his or her associates may be provided on a permanent or contractual basis by the counties within the district; and

WHEREAS, a Medical Examiner's Advisory Task Force that included representatives from the District 19 Counties was created to review the Medical Examiner's request for a new facility; and

WHEREAS, the Advisory Task Force has reviewed and supports the Medical Examiner's request for a new facility; and

WHEREAS, the District Board of Trustees of Indian River State College ("Trustees") has entered into a Memorandum of Understanding with the District 19 Medical Examiner wherein the Trustees have agreed to negotiate a long term lease of 2 acres of Trustees owned land for the construction of a new Medical Examiner's facility; and

WHEREAS, St. Lucie County is willing to serve as the contract manager in the procurement process leading to the design and construction of a new medical examiner facility upon request of the other District 19 Counties; and

WHEREAS, St. Lucie County conceptually agrees to utilize the funding formula set out in the Agreement referenced above to allocate funding for the design and construction of a new medical examiner facility; and

WHEREAS, St. Lucie County supports requesting state and federal funding to assist in funding the cost of designing and constructing a new medical examiner facility; and

WHEREAS, this Board has determined that it is in the best interest of the health, safety and welfare of the citizens of St. Lucie County, Florida to support the design and construction of a new medical examiner facility as set out above.

NOW, THEREFORE, BE IT RESOLVED BY THE BOARD OF COUNTY COMMISSIONERS OF ST. LUCIE COUNTY, FLORIDA THAT:

1. This Board adopts and ratifies those matters set forth in the foregoing recitals.
2. The County Administrator is directed to enter into discussions with the other District 19 Counties, the Medical Examiner and the Trustees leading to an agreement to design and construct a new medical examiner facility to be located on the campus of Indian River State College in Fort Pierce, Florida.
3. The County Administrator and the County Legislative Affairs Director are directed to support and submit requests for state and federal funding to assist in funding the cost of designing and constructing a new medical examiner facility.
4. This resolution shall take effect upon adoption.

Chair Sean Mitchell	XXX
Vice Chair Frannie Hutchinson	XXX
Commissioner Christopher Dzadovsky	XXX
Commissioner Linda Bartz	XXX
Commissioner Cathy Townsend	XXX

PASSED AND DULY ADOPTED this _____ day of _____ 2022.

ATTEST:

**BOARD OF COUNTY COMMISSIONERS
ST. LUCIE COUNTY, FLORIDA**

BY: _____
Chair

APPROVED AS TO FORM AND CORRECTNESS

BY: _____
County Attorney

RESOLUTION 2022-

A RESOLUTION OF THE BOARD OF COUNTY COMMISSIONERS OF INDIAN RIVER COUNTY, FLORIDA, DIRECTING THE COUNTY ADMINISTRATOR TO ENTER INTO DISCUSSIONS LEADING TO AN AGREEMENT TO DESIGN AND CONSTRUCT A NEW MEDICAL EXAMINER FACILITY TO BE LOCATED ON THE CAMPUS OF INDIAN RIVER STATE COLLEGE IN FORT PIERCE, FLORIDA; SUPPORTING REQUESTS FOR STATE AND FEDERAL FINANCIAL ASSISTANCE; PROVIDING FOR AN EFFECTIVE DATE

WHEREAS, effective October 1, 2018, the District 19 Counties (collectively Indian River County, Martin County, Okeechobee County and St. Lucie County) entered into a Second Amended and Restated Interlocal Agreement ("Agreement") that provides for cost sharing of medical examiner services and related matters; and

WHEREAS, the Medical Examiner for District 19 has declared a need for a new facility to properly complete her statutory duties; and

WHEREAS, Section 406.08(5), Florida Statutes, provides that autopsy and laboratory facilities utilized by the district medical examiner or his or her associates may be provided on a permanent or contractual basis by the counties within the district; and

WHEREAS, a Medical Examiner's Advisory Task Force that included representatives from the District 19 Counties was created to review the Medical Examiner's request for a new facility; and

WHEREAS, the Advisory Task Force has reviewed and supports the Medical Examiner's request for a new facility; and

WHEREAS, the Medical Examiner's facility is a regional resource that supports services in the four counties within District 19; and

WHEREAS, Section 406.02(4)(c), Florida Statutes, provides that the Medical Examiners Commission shall oversee the distribution of state funds for the medical examiner districts, and

WHEREAS, the District Board of Trustees of Indian River State College ("Trustees") has entered into a Memorandum of Understanding with the District 19 Medical Examiner wherein the Trustees have agreed to negotiate a long term lease of 2 acres of Trustees owned land for the construction of a new Medical Examiner's facility; and

WHEREAS, Indian River County supports requesting state and federal funding to assist in financing the cost of designing and constructing a new medical examiner facility; and

RESOLUTION 2022-

WHEREAS, this Board has determined that it is in the best interest of the health, safety and welfare of the citizens of Indian River County, Florida to support funding sources for the design and construction of a new medical examiner facility as set out above.

NOW, THEREFORE BE IT RESOLVED, BY THE BOARD OF COUNTY COMMISSIONERS OF INDIAN RIVER COUNTY, FLORIDA that:

1. This Board adopts and ratifies those matters set forth in the foregoing recitals.
2. The County Administrator is directed to enter into discussions with the other District 19 Counties, the Medical Examiner and the Trustees leading to an agreement to conduct a needs assessment, design and construct a new medical examiner facility to be located on the campus of Indian River State College in Fort Pierce, Florida.
3. The County Administrator is directed to support and submit requests for state and federal funding to assist in funding the cost of designing and constructing a new medical examiner facility.
4. This resolution shall take effect upon adoption.

This resolution was moved for adoption by Commissioner _____, and the motion was seconded by Commissioner _____, and upon being put to a vote, the vote was as follows:

Chairman Peter D. O'Bryan	_____
Vice Chairman Joseph H. Earman	_____
Commissioner Susan Adams	_____
Commissioner Joseph E. Flescher	_____
Commissioner Laura Moss	_____

The Chairman thereupon declared the resolution duly passed and adopted this _____ day of _____, 2022.

**BOARD OF COUNTY COMMISSIONERS
INDIAN RIVER COUNTY, FLORIDA**

By: _____
Peter D. O'Bryan, Chairman

Approved by BCC: _____

RESOLUTION 2022-

ATTEST: Jeffrey R. Smith, Clerk of
Courts and Comptroller

By: _____
Deputy Clerk

Approved as to form and
legal sufficiency:

Dylan Reingold
County Attorney

Approved:

By: _____
Jason E. Brown
County Administrator

RESOLUTION 2022-

**BOARD OF COUNTY COMMISSIONERS
OKEECHOBEE COUNTY, FLORIDA**

RESOLUTION 2022-_____

A RESOLUTION OF THE BOARD OF COUNTY COMMISSIONERS OF OKEECHOBEE COUNTY, FLORIDA, DIRECTING THE COUNTY ADMINISTRATOR TO ENTER INTO DISCUSSIONS LEADING TO AN AGREEMENT TO DESIGN AND CONSTRUCT A NEW MEDICAL EXAMINER FACILITY TO BE LOCATED ON THE CAMPUS OF INDIAN RIVER STATE COLLEGE IN FORT PIERCE, FLORIDA; SUPPORTING REQUESTS FOR STATE AND FEDERAL FINANCIAL ASSISTANCE; AND PROVIDING FOR AN EFFECTIVE DATE.

WHEREAS, effective October 1, 2018, the District 19 Counties (collectively Indian River County, Martin County, Okeechobee County and St. Lucie County) entered into a Second Amended and Restated Interlocal Agreement ("Agreement") that provides for cost sharing of medical examiner services and related matters; and

WHEREAS, the Medical Examiner for District 19 has declared a need for a new facility to properly complete her statutory duties; and

WHEREAS, Section 406.08(5), Florida Statutes, provides that autopsy and laboratory facilities utilized by the district medical examiner or his or her associates may be provided on a permanent or contractual basis by the counties within the district; and

WHEREAS, a Medical Examiner's Advisory Task Force that included representatives from the District 19 Counties was created to review the Medical Examiner's request for a new facility; and

WHEREAS, the Advisory Task Force has reviewed and supports the Medical Examiner's request for a new facility; and

WHEREAS, the Medical Examiner's facility is a regional resource that supports services in the four counties within District 19; and

WHEREAS, Section 406.02(4)(c), Florida Statutes, provides that the Medical Examiners Commission shall oversee the distribution of state funds for the medical examiner districts; and

WHEREAS, the District Board of Trustees of Indian River State College ("Trustees") has entered into a Memorandum of Understanding with the District 19 Medical Examiner wherein the Trustees have agreed to negotiate a long term lease of 2 acres of Trustees owned land for the construction of a new Medical Examiner's facility; and

WHEREAS, Okeechobee County supports requesting state and federal funding to assist in financing the cost of designing and constructing a new medical examiner facility; and

WHEREAS, this Board has determined that it is in the best interest of the health, safety and welfare of the citizens of Okeechobee County, Florida to support funding sources for the design and construction of a new medical examiner facility as set out above.

NOW, THEREFORE, be it resolved by the Okeechobee County Board of County Commissioners, as follows:

Section 1. This Board adopts and ratifies those matters set forth in the foregoing recitals.

Section 2. The County Administrator is directed to enter into discussions with the other District 19 Counties, the Medical Examiner and the Trustees leading to an agreement to conduct a needs assessment, design and construct a new medical examiner facility to be located on the campus of Indian River State College in Fort Pierce, Florida.

Section 3. The County Administrator is directed to support and submit requests for state and federal funding to assist in funding the cost of designing and constructing a new medical examiner facility.

Section 4. This Resolution shall take effect immediately upon its adoption.

APPROVED AND ADOPTED this ____ day of April, 2022.

TERRY W. BURROUGHS, CHAIRMAN
BOARD OF COUNTY COMMISSIONERS
OKEECHOBEE COUNTY, FLORIDA

ATTEST:

JERALD D. BRYANT, CLERK OF THE
CIRCUIT COURT AND COMPTROLLER