

EXHIBIT "A"
LEGAL DESCRIPTION

LYING IN SECTION 18, TOWNSHIP 37 SOUTH, RANGE 41 EAST,
MARTIN COUNTY, FLORIDA

LEGAL DESCRIPTION:

A PARCEL OF LAND LYING IN SECTION 18, TOWNSHIP 37 SOUTH, RANGE 41 EAST, MARTIN COUNTY, FLORIDA MORE PARTICULARLY DESCRIBED AS FOLLOWS;

COMMENCE AT THE SOUTHEAST CORNER OF SAID SECTION 18; THENCE, SOUTH 89°56'41" WEST ALONG THE SOUTH LINE OF SAID SECTION 18 A DISTANCE OF 597.70 FEET TO THE **POINT OF BEGINNING**;

THENCE, CONTINUE SOUTH 89°56'41" WEST ALONG THE SAID SOUTH LINE OF SECTION 18 A DISTANCE OF 60.63 FEET;

THENCE, NORTH 31°06'45" WEST A DISTANCE OF 461.34 FEET;

THENCE, NORTH 58°28'12" EAST A DISTANCE OF 48.35 FEET;

THENCE, SOUTH 31°31'48" EAST A DISTANCE OF 492.99 FEET TO THE SAID SOUTH LINE OF SECTION 18, AND THE **POINT OF BEGINNING**.

CONTAINING 23,898 SQUARE FEET OR 0.55 ACRES, MORE OR LESS.

SURVEYOR'S NOTES:

1. THE BEARINGS SHOWN HEREON ARE BASED UPON THE NORTH AMERICAN DATUM OF 1983, 2011 ADJUSTMENT, FLORIDA STATE PLANE COORDINATE SYSTEM, EAST ZONE. THE SOUTH LINE OF SECTION 18, TOWNSHIP 37 SOUTH, RANGE 41 EAST BEING SOUTH 89°56'41" WEST.

SURVEYOR'S CERTIFICATION:

I HEREBY CERTIFY, TO THE BEST OF MY KNOWLEDGE AND BELIEF, THAT THE SKETCH AND DESCRIPTION SHOWN HEREON WAS PREPARED IN ACCORDANCE WITH THE "STANDARDS OF PRACTICE" FOR SURVEYING AND MAPPING IN THE STATE OF FLORIDA AS SET FORTH BY THE FLORIDA BOARD OF PROFESSIONAL SURVEYORS AND MAPPERS IN CHAPTER 5J-17, FLORIDA ADMINISTRATIVE CODE, PURSUANT TO SECTION 472.027, FLORIDA STATUTES.

RICHARD E. BARNES, JR.
PROFESSIONAL SURVEYOR AND MAPPER
FLORIDA LICENSE No. LS - 5173

DATE OF SIGNATURE

NOTE: SEE SHEET 2 OF 2 FOR SKETCH OF DESCRIPTION.

DESCRIPTION NOT VALID UNLESS ACCOMPANIED WITH SKETCH OF DESCRIPTION AS SHOWN ON SHEET 2 OF 2 OF THIS DOCUMENT.

THIS IS NOT A SURVEY

BOWMAN CONSULTING GROUP, LTD., INC.
CORPORATION CERTIFICATE OF AUTHORIZATION No. LB 8030

NOT VALID WITHOUT THE ORIGINAL SIGNATURE AND SEAL OR THE ELECTRONIC SIGNATURE OF A FLORIDA LICENSED SURVEYOR AND MAPPER.

Bowman
C O N S U L T I N G

Bowman Consulting Group, Ltd., Inc. Phone: (772) 283-1413
301 SE Ocean Blvd. Fax: (772) 220-7881
Suite 301, Stuart, Florida 34994 www.bowmanconsulting.com

© Bowman Consulting Group, Ltd.

Professional Surveyors and Mapper Business Certificate # LB 8030

A PORTION OF SECTION 18,
TOWNSHIP 37 SOUTH, RANGE 41 EAST

MARTIN COUNTY

FLORIDA

PATH: P:\010595-Dacar\010595-02-001(SUR)-West-Jensen-Residential\Survey

PROJECT NO. 010595-02-001

REVISED DATE:

DATE: MAR. 8, 2022

CADD FILE: 010595-02-001-S&D

SCALE: N/A

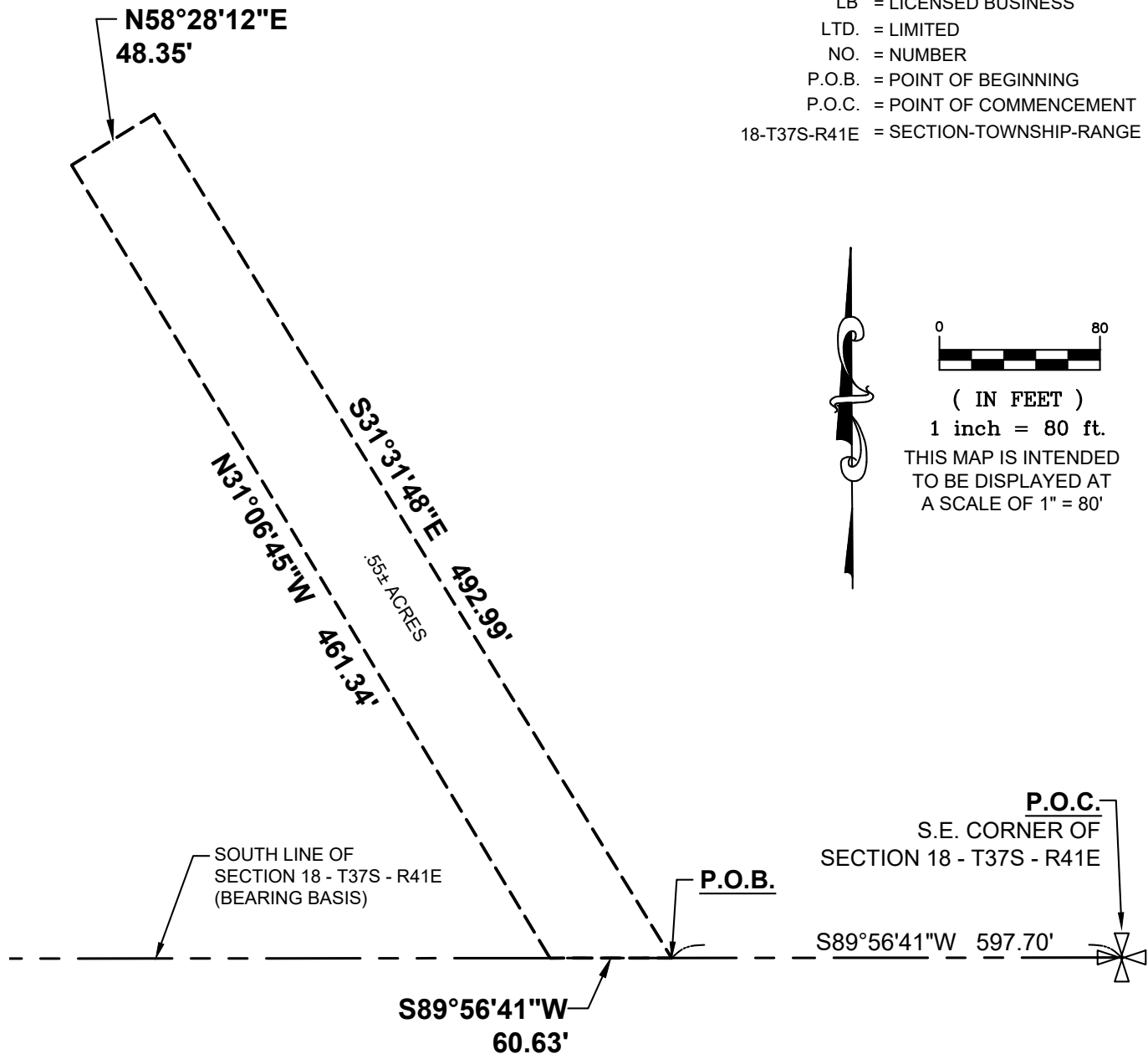
SHEET 1 OF 2

EXHIBIT "A"
SKETCH OF DESCRIPTION

LYING IN SECTION 18, TOWNSHIP 37 SOUTH, RANGE 41 EAST,
MARTIN COUNTY, FLORIDA

LEGEND

LB = LICENSED BUSINESS
LTD. = LIMITED
NO. = NUMBER
P.O.B. = POINT OF BEGINNING
P.O.C. = POINT OF COMMENCEMENT
18-T37S-R41E = SECTION-TOWNSHIP-RANGE



NOTE: SEE SHEET 1 OF 2 FOR DESCRIPTION, SURVEYOR'S NOTES AND CERTIFICATION.

THIS IS NOT A SURVEY

Bowman
C O N S U L T I N G

Bowman Consulting Group, Ltd., Inc. Phone: (772) 283-1413
301 SE Ocean Blvd. Fax: (772) 220-7881
Suite 301, Stuart, Florida 34994 www.bowmanconsulting.com

© Bowman Consulting Group, Ltd.

Professional Surveyors and Mapper Business Certificate # LB 8030

A PORTION OF SECTION 18,
TOWNSHIP 37 SOUTH, RANGE 41 EAST

MARTIN COUNTY

FLORIDA

PATH: P: \010595-Dacar\010595-02-001(SUR)-West-Jensen-Residential\Survey

PROJECT NO. 010595-02-001

REVISED DATE:

DATE: MAR. 8, 2022

CADD FILE: 010595-02-001-S&D

SCALE: 1"=80'

SHEET 2 OF 2