

EXHIBIT B

LEGAL DESCRIPTION

A PARCEL OF LAND IN LOTS 36 AND 37 GOMEZ GRANT AS RECORDED IN PLAT BOOK "B" PAGE 51 OF THE PUBLIC RECORDS OF DADE COUNTY, FLORIDA AND RE-RECORDED IN PLATBOOK 1 PAGE 61 OF THE PUBLIC RECORDS OF PALM BEACH COUNTY, NOW MARTIN COUNTY, FLORIDA, BEING MORE PARTICULARLY DESCRIBED AS FOLLOWS:

COMMENCE AT THE SOUTHWESTERLY CORNER OF LOT 36 OF SAID GOMEZ GRANT; THENCE N 21°36'27" W ALONG THE WESTERLY LINE OF LOT 36 A DISTANCE OF 660.01 FEET TO THE NORTHWEST CORNER OF LOT 36 OF SAID GOMEZ GRANT; THENCE N 21°54'53" W A DISTANCE OF 33.07 FEET TO THE SOUTHWEST CORNER OF LOT 37 OF SAID GOMEZ GRANT; THENCE N 21°34'50" W ALONG THE WESTERLY LINE OF LOT 37 A DISTANCE OF 424.13 FEET; THENCE DEPARTING THE WESTERLY LINE OF LOT 37 N 68°25'55" E A DISTANCE OF 292.39 FEET TO THE POINT OF BEGINNING;

THENCE N 68°25'55" E, A DISTANCE OF 1770.01 FEET TO THE MEAN HIGH WATER LINE OF THE INTRACOASTAL WATERWAY; THENCE ALONG MEAN HIGH WATER LINE OF THE INTRACOASTAL WATERWAY S 40°07'14" E, A DISTANCE OF 126.93 FEET; THENCE S 14°12'21" E, A DISTANCE OF 162.74 FEET; THENCE S 22°41'28" E, A DISTANCE OF 99.29 FEET; THENCE S 32°44'41" E, A DISTANCE OF 42.11 FEET; THENCE S 21°18'39" E, A DISTANCE OF 33.08 FEET; THENCE S 12°48'09" E, A DISTANCE OF 80.79 FEET; THENCE S 00°05'04" W, A DISTANCE OF 14.21 FEET; THENCE S 52°09'17" W, A DISTANCE OF 32.07 FEET; THENCE S 07°03'06" E, A DISTANCE OF 71.79 FEET; THENCE S 54°15'56" E, A DISTANCE OF 40.77 FEET; THENCE S 39°25'10" E, A DISTANCE OF 17.80 FEET; THENCE S 17°24'34" E, A DISTANCE OF 114.24 FEET; THENCE S 09°56'55" E, A DISTANCE OF 66.29 FEET; THENCE S 19°36'12" E, A DISTANCE OF 9.44 FEET; THENCE DEPARTING THE MEAN HIGH WATER LINE OF THE INTRACOASTAL WATERWAY S 86°16'56" W, A DISTANCE OF 57.97 FEET; THENCE S 84°45'30" W, A DISTANCE OF 63.81 FEET; THENCE N 87°43'45" W, A DISTANCE OF 28.84 FEET; TO THE BEGINNING OF A CURVE CONCAVE TO THE LEFT WITH A RADIUS OF 79.66 FEET; THENCE ALONG THE ARC OF SAID CURVE THROUGH A CENTRAL ANGLE OF 46°16'00", A DISTANCE OF 64.32 FEET; THENCE S 46°00'14" W, A DISTANCE OF 50.24 FEET; THENCE S 37°54'27" W, A DISTANCE OF 130.89 FEET; THENCE S 42°38'31" W, A DISTANCE OF 75.44 FEET; THENCE S 40°56'01" W, A DISTANCE OF 97.75 FEET; THENCE S 33°44'02" W, A DISTANCE OF 66.63 FEET; TO THE BEGINNING OF A CURVE CONCAVE TO THE RIGHT WITH A RADIUS OF 5.47 FEET; THENCE ALONG THE ARC OF SAID CURVE THROUGH A CENTRAL ANGLE OF 47°15'07", A DISTANCE OF 4.51 FEET; THENCE S 80°59'09" W, A DISTANCE OF 73.79 FEET; THENCE S 68°23'18" W, A DISTANCE OF 35.35 FEET; THENCE S 58°02'25" W, A DISTANCE OF 42.52 FEET; THENCE S 57°24'36" W, A DISTANCE OF 53.81 FEET; TO THE BEGINNING OF A CURVE CONCAVE TO THE RIGHT WITH A RADIUS OF 160.27 FEET; THENCE ALONG THE ARC OF SAID CURVE THROUGH A CENTRAL ANGLE OF 27°14'37", A DISTANCE OF 76.21 FEET; THENCE S 84°39'13" W, A DISTANCE OF 61.94 FEET; THENCE N 88°02'50" W, A DISTANCE OF 51.97 FEET; THENCE S 85°58'52" W, A DISTANCE OF 48.16 FEET; THENCE N 79°00'44" W, A DISTANCE OF 56.40 FEET; THENCE N 80°31'40" W, A DISTANCE OF 101.44 FEET; TO THE BEGINNING OF A CURVE CONCAVE TO THE LEFT WITH A RADIUS OF 150.19 FEET; THENCE ALONG THE ARC OF SAID CURVE THROUGH A CENTRAL ANGLE OF 59°00'29", A DISTANCE OF 154.68 FEET; THENCE S 41°03'33" W, A DISTANCE OF 44.98 FEET; TO THE BEGINNING OF A NON-TANGENT CURVE CONCAVE TO THE RIGHT HAVING A RADIUS OF 110.36 FEET; THE CHORD OF WHICH BEARS S 46°11'30" W, WITH A CHORD DISTANCE OF 3.09; THENCE ALONG THE ARC OF SAID CURVE THROUGH A CENTRAL ANGLE OF 01°36'12", FOR A DISTANCE OF 3.09 FEET; THENCE N 33°32'47" W, A DISTANCE OF 90.82 FEET; THENCE S 68°13'57" W, A DISTANCE OF 24.69 FEET; THENCE S 50°52'06" W, A DISTANCE OF 53.68 FEET; THENCE S 51°03'01" W, A DISTANCE OF 41.07 FEET; THENCE S 66°35'29" W, A DISTANCE OF 45.32 FEET; THENCE N 14°28'44" W, A DISTANCE OF 61.11 FEET; THENCE N 44°00'08" E, A DISTANCE OF 19.86 FEET; THENCE N 60°54'31" E, A

(legal description continued on sheet 2)



**NORTHSTAR
GEOMATICS**

617 NW BAKER ROAD
PO BOX 2371, STUART, FLORIDA 34995
(772)781-6400 (772)781-6462 FAX
LICENSED BUSINESS NO. 7217

SKETCH AND LEGAL DESCRIPTION OF

PARCEL B

MARTIN COUNTY, FLORIDA

SHEET NO.

1
OF 12

PROJECT NO.

20-046.1

(legal description continued from sheet 1)

DISTANCE OF 43.99 FEET; THENCE N 20°57'40" W, A DISTANCE OF 66.99 FEET; THENCE N 18°10'42" W, A DISTANCE OF 109.57 FEET; THENCE N 04°30'37" W, A DISTANCE OF 74.76 FEET; THENCE N 02°01'42" E, A DISTANCE OF 49.89 FEET; THENCE N 88°00'30" W, A DISTANCE OF 162.38 FEET; THENCE N 21°41'10" W, A DISTANCE OF 40.40 FEET; THENCE N 73°00'43" W, A DISTANCE OF 34.28 FEET; THENCE N 15°39'30" E, A DISTANCE OF 36.80 FEET; THENCE N 48°09'32" W, A DISTANCE OF 38.80 FEET; THENCE N 33°57'58" W, A DISTANCE OF 33.68 FEET; THENCE N 83°51'01" W, A DISTANCE OF 40.07 FEET; THENCE N 61°35'51" W, A DISTANCE OF 68.21 FEET; THENCE N 59°16'35" W, A DISTANCE OF 26.29 FEET; THENCE S 86°08'33" W, A DISTANCE OF 25.44 FEET; THENCE N 06°50'30" E, A DISTANCE OF 30.08 FEET; THENCE N 26°40'33" W, A DISTANCE OF 49.52 FEET; THENCE N 88°40'56" W, A DISTANCE OF 28.93 FEET; THENCE S 71°38'54" W, A DISTANCE OF 40.75 FEET; THENCE N 23°48'04" W, A DISTANCE OF 45.93 FEET; THENCE N 16°22'40" E, A DISTANCE OF 21.23 FEET TO THE POINT OF BEGINNING.

CONTAINING 1,442,562.48 SQUARE FEET OR 33.116678 ACRES MORE OR LESS.



**NORTHSTAR
GEOMATICS**

617 NW BAKER ROAD
PO BOX 2371, STUART, FLORIDA 34995
(772)781-6400 (772)781-6462 FAX
LICENSED BUSINESS NO. 7217

SKETCH AND LEGAL DESCRIPTION OF

PARCEL B

MARTIN COUNTY, FLORIDA

SHEET NO.

2
OF 12

PROJECT NO.

20-046.1

SURVEYOR'S NOTES

1. BEARING BASIS IS THE WEST LINE OF LOT 35, GOMEZ GRANT PLAT BOOK "B" PAGE 51, DADE COUNTY, FLORIDA RE-RECORDED IN PLAT BOOK 1 PAGE 61, PALM BEACH, NOW MARTIN COUNTY, FLORIDA HAVING A BEARING OF NORTH 21°36'37" WEST
2. THIS IS NOT A SURVEY.
3. THIS LEGAL DESCRIPTION SHALL NOT BE VALID UNLESS PROVIDED IN ITS ENTIRETY CONSISTING OF 15 SHEETS, WITH SHEETS 6 THROUGH 15 BEING THE SKETCH OF DESCRIPTION.
4. THIS DOCUMENT MAY BE REPRODUCED UPON REQUEST IN AN ALTERNATIVE FORMAT BY CONTACTING THE COUNTY ADA COORDINATOR (772)320-3131, THE COUNTY ADMINISTRATION OFFICE (772-288-5400), FLORIDA RELAY 711, OR BY COMPLETING OUR ACCESSIBILITY FEEDBACK FORM AT WWW.MARTIN.FL.US/ACCESSIBILITY-FEEDBACK.

LEGEND

CB = CHORD BEARING
CD = CHORD DISTANCE
COR. = CORNER
D = DELTA
DB = DEED BOOK
FDOT = FLORIDA DEPARTMENT OF TRANSPORTATION
L = ARC LENGTH
ORB = OFFICIAL RECORDS BOOK
PC = POINT OF CURVATURE
PCN = PARCEL CONTROL NUMBER
PI = POINT OF INTERSECTION
PG = PAGE
POB = POINT OF BEGINNING
POC = POINT OF COMMENCEMENT
PT = POINT OF TANGENCY
R = RADIUS
R/W = RIGHT-OF-WAY

SURVEYOR'S CERTIFICATE

I HEREBY CERTIFY THAT THIS SKETCH AND LEGAL DESCRIPTION COMPLIES WITH THE STANDARDS OF PRACTICE SET FORTH BY THE FLORIDA BOARD OF PROFESSIONAL SURVEYORS AND MAPPERS IN CHAPTER 5J-17, FLORIDA ADMINISTRATIVE CODE, PURSUANT TO SECTION 5J-17.050 - 17.052.

FRANK VELDHUIS, P.S.M.
FLORIDA REGISTRATION NO. 6582

DATE



**NORTHSTAR
GEOMATICS**

617 NW BAKER ROAD
PO BOX 2371, STUART, FLORIDA 34995
(772)781-6400 (772)781-6462 FAX
LICENSED BUSINESS NO. 7217

SKETCH AND LEGAL DESCRIPTION OF

PARCEL B

MARTIN COUNTY, FLORIDA

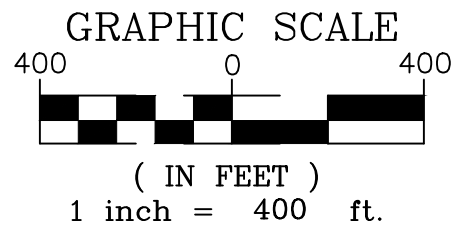
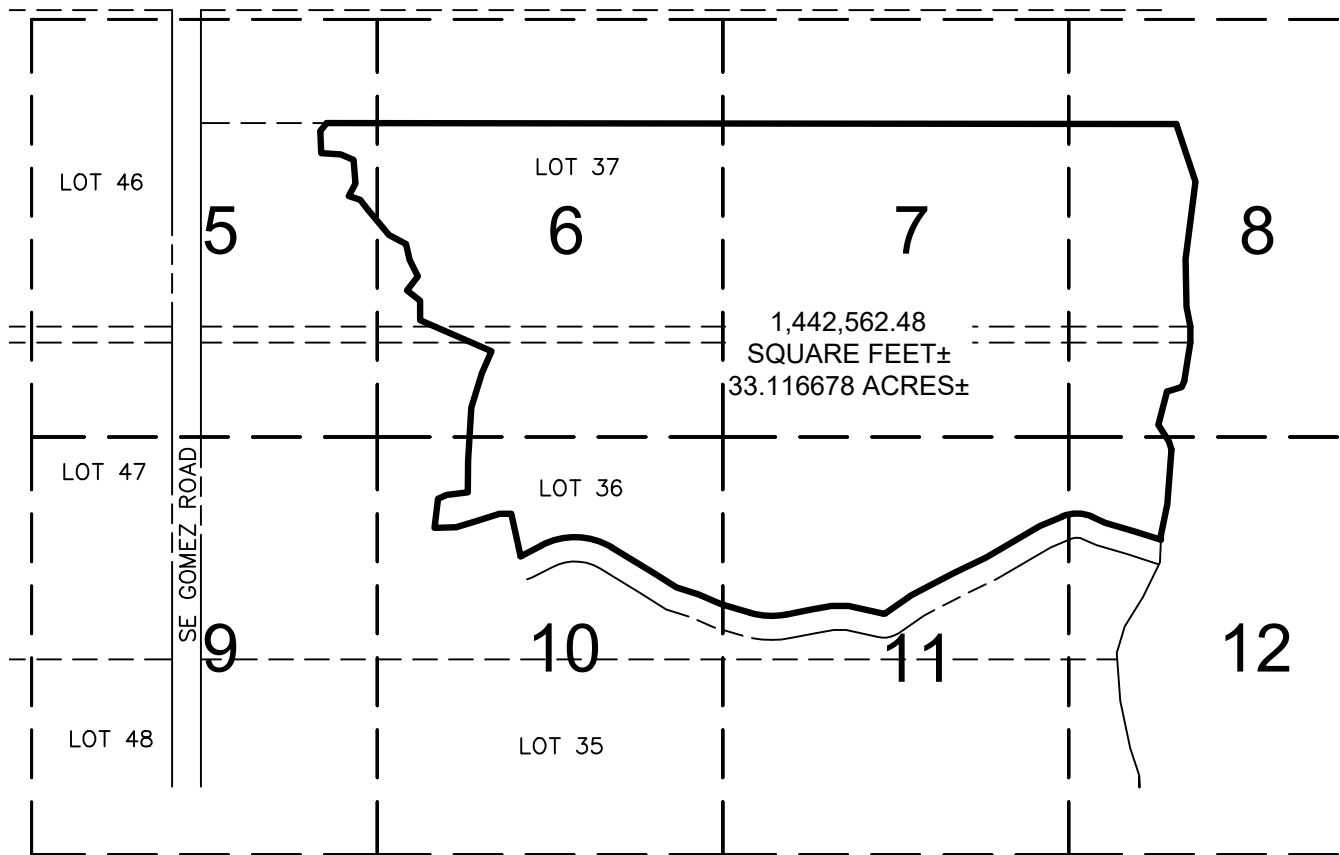
SHEET NO.

3
OF 12

PROJECT NO.

20-046.1

SHEET INDEX



**NORTHSTAR
GEOMATICS**

617 NW BAKER ROAD
PO BOX 2371, STUART, FLORIDA 34995
(772)781-6400 (772)781-6462 FAX
LICENSED BUSINESS NO. 7217

SKETCH AND LEGAL DESCRIPTION OF

PARCEL B

MARTIN COUNTY, FLORIDA

SHEET NO.

4
OF 12

PROJECT NO.

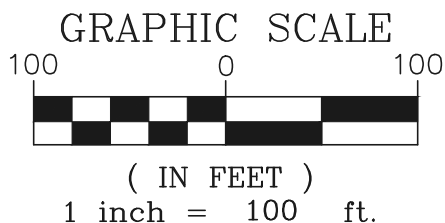
20-046.1

LOT 46, GOMEZ GRANT
 PLAT BOOK "B" PAGE 51, DADE COUNTY, FLORIDA
 RE-RECORDED IN PLAT BOOK 1 PAGE 61, PALM BEACH,
 NOW MARTIN COUNTY, FLORIDA
 PID: 343842000042000003; ORB 2610, PAGE 0223, ORG
 1498 PAGE 962, ORB 1534, PAGE 2431, ORB 1554 PAGE
 2451, ORG 1621 PAGE 717, ORG 1996, PAGE 2220, ORG
 1046, PAGE 2380, ORG 814, PAGE 1291, ORG 1380,
 PAGE 1811, ORG 833, PAGE 2662
 PUBLIC RECORDS OF MARTIN COUNTY, FLORIDA



60' RIGHT OF WAY, SE GOMEZ ROAD
 PLATTED FIRST AVENUE GOMEZ GRANT
 PLAT BOOK "B" PAGE 51, DADE COUNTY, FLORIDA
 RE-RECORDED IN PLAT BOOK 1 PAGE 61, PALM
 BEACH, NOW MARTIN COUNTY, FLORIDA

10TH STREET (VACATED)
 ORB 620, PAGE 1955



MATCH LINE SEE SHEET 9

WEST LINE OF LOT 37

N21°34'50"W
 424.13'

N21°54'53"W
 33.07'

N21°36'27"W
 660.01'

WEST LINE OF LOT 36

1,442,562.48 SQUARE FEET±
 33.116678 ACRES±

POINT OF
 BEGINNING

N68°25'55"E 292.39'
 N16°22'40"E 21.23'
 N23°48'04"W 45.93'
 S71°38'54"W 40.75'
 N26°40'33"W 49.52'
 N06°50'30"E 30.08'
 S86°08'33"W 25.44'
 N59°16'35"W 26.29'
 N61°35'51"W 68.21'
 N88°40'56"W 28.93'

LOT 37, GOMEZ GRANT
 PLAT BOOK "B" PAGE 51, DADE COUNTY, FLORIDA
 RE-RECORDED IN PLAT BOOK 1 PAGE 61, PALM BEACH,
 NOW MARTIN COUNTY, FLORIDA
 PID: 343842000037000003; ORB 2610, PAGE 0223
 PUBLIC RECORDS OF MARTIN COUNTY, FLORIDA

SW CORNER
 LOT 37

LOT 37

10TH STREET (VACATED) ORB 3261 PG 1394-1407

LOT 36

NW CORNER
 LOT 36

LOT 36, GOMEZ GRANT
 PLAT BOOK "B" PAGE 51, DADE COUNTY, FLORIDA
 RE-RECORDED IN PLAT BOOK 1 PAGE 61, PALM
 BEACH, NOW MARTIN COUNTY, FLORIDA
 PID: 343842000036000005; ORB 3120, PAGE 1418
 PUBLIC RECORDS OF MARTIN COUNTY, FLORIDA

MATCH LINE SEE SHEET 6



**NORTHSTAR
 GEOMATICS**

617 NW BAKER ROAD
 PO BOX 2371, STUART, FLORIDA 34995
 (772)781-6400 (772)781-6462 FAX
 LICENSED BUSINESS NO. 7217

SKETCH AND LEGAL DESCRIPTION OF

PARCEL B

MARTIN COUNTY, FLORIDA

SHEET NO.

5

OF 12

PROJECT NO.

20-46.1

N68°25'55"E
1770.01'

1,442,562.48 SQUARE FEET±
33.116678 ACRES±

LOT 37, GOMEZ GRANT
PLAT BOOK "B" PAGE 51, DADE COUNTY, FLORIDA
RE-RECORDED IN PLAT BOOK 1 PAGE 61, PALM BEACH,
NOW MARTIN COUNTY, FLORIDA
PID: 343842000037000003; ORB 2610, PAGE 0223
PUBLIC RECORDS OF MARTIN COUNTY, FLORIDA

LOT 36, GOMEZ GRANT
PLAT BOOK "B" PAGE 51, DADE COUNTY, FLORIDA
RE-RECORDED IN PLAT BOOK 1 PAGE 61, PALM BEACH,
NOW MARTIN COUNTY, FLORIDA
PID: 343842000036000005; ORB 3120, PAGE 1418
PUBLIC RECORDS OF MARTIN COUNTY, FLORIDA

LOT 37

10TH STREET (VACATED) ORB 3261 PG 1394-1407

LOT 36

N61°35'51"W
68.21'

N83°51'01"W
40.07'

N33°57'58"W
33.68'
N48°09'32"W
38.80'

N15°39'30"E
36.80'
N73°00'43"W
34.28'

N21°41'10"W
40.40'

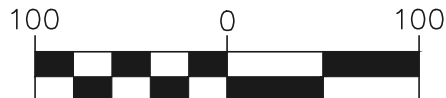
N88°00'30"W
162.38'

N02°01'42"E
49.89'

N04°30'37"W
74.76'

N18°10'42"W
109.57'

GRAPHIC SCALE



(IN FEET)

1 inch = 100 ft.

MATCH LINE SEE SHEET 10

MATCH LINE SEE SHEET 5

MATCH LINE SEE SHEET 7



**NORTHSTAR
GEOMATICS**

617 NW BAKER ROAD
PO BOX 2371, STUART, FLORIDA 34995
(772)781-6400 (772)781-6462 FAX
LICENSED BUSINESS NO. 7217

SKETCH AND LEGAL DESCRIPTION OF

PARCEL B

MARTIN COUNTY, FLORIDA

SHEET NO.

6

OF 12

PROJECT NO.

20-46.1

N68°25'55"E
1770.01'

1,442,562.48 SQUARE FEET±
33.116678 ACRES±

LOT 37, GOMEZ GRANT
PLAT BOOK "B" PAGE 51, DADE COUNTY, FLORIDA
RE-RECORDED IN PLAT BOOK 1 PAGE 61, PALM BEACH,
NOW MARTIN COUNTY, FLORIDA
PID: 343842000037000003; ORB 2610, PAGE 0223
PUBLIC RECORDS OF MARTIN COUNTY, FLORIDA

LOT 36, GOMEZ GRANT
PLAT BOOK "B" PAGE 51, DADE COUNTY, FLORIDA
RE-RECORDED IN PLAT BOOK 1 PAGE 61, PALM BEACH,
NOW MARTIN COUNTY, FLORIDA
PID: 343842000036000005; ORB 3120, PAGE 1418
PUBLIC RECORDS OF MARTIN COUNTY, FLORIDA

LOT 37

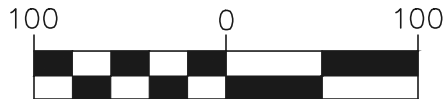
10TH STREET (VACATED) ORB 3261 PG 1394-1407

LOT 36

N88°00'30"W
162.38'

N02°01'42"E
49.89'

GRAPHIC SCALE



(IN FEET)

1 inch = 100 ft.

N18°10'42"W
109.57'

N04°30'37"W
74.76'

MATCH LINE SEE SHEET 11

MATCH LINE SEE SHEET 6

MATCH LINE SEE SHEET 8



**NORTHSTAR
GEOMATICS**

617 NW BAKER ROAD
PO BOX 2371, STUART, FLORIDA 34995
(772)781-6400 (772)781-6462 FAX
LICENSED BUSINESS NO. 7217

SKETCH AND LEGAL DESCRIPTION OF

PARCEL B

MARTIN COUNTY, FLORIDA

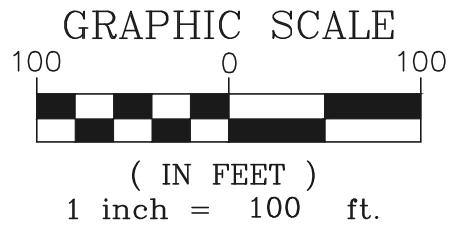
SHEET NO.

7

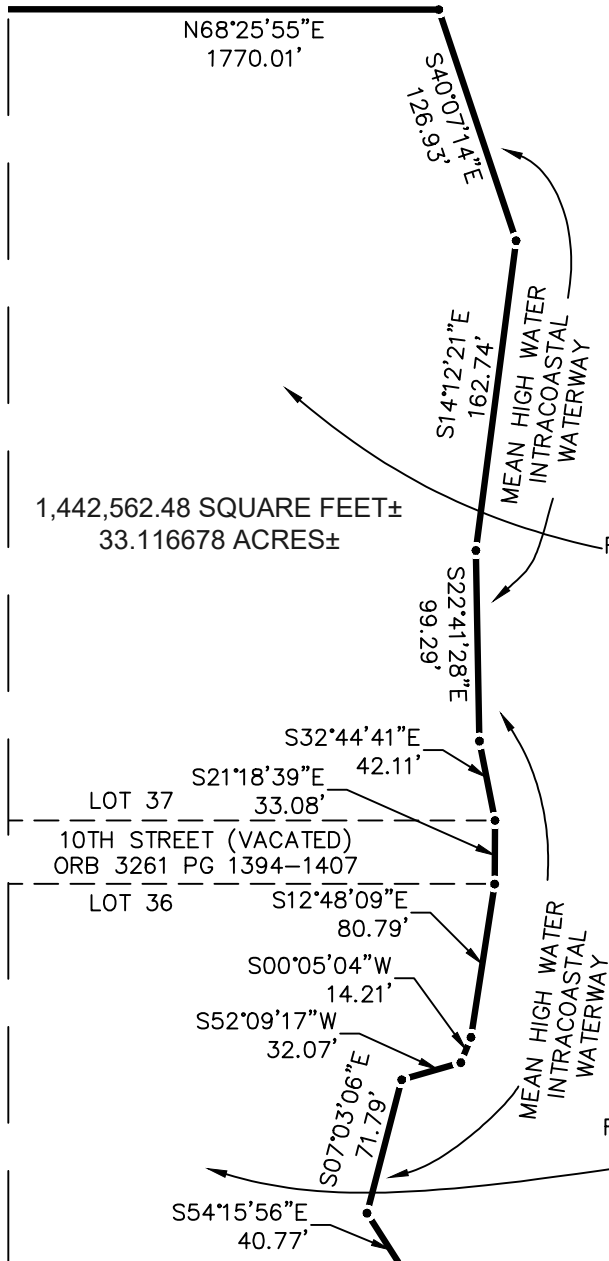
OF 12

PROJECT NO.

20-46.1



MATCH LINE SEE SHEET 7



LOT 37, GOMEZ GRANT
PLAT BOOK "B" PAGE 51, DADE COUNTY, FLORIDA
RE-RECORDED IN PLAT BOOK 1 PAGE 61, PALM BEACH,
NOW MARTIN COUNTY, FLORIDA
PID: 343842000037000003; ORB 2610, PAGE 0223
PUBLIC RECORDS OF MARTIN COUNTY, FLORIDA

LOT 36, GOMEZ GRANT
PLAT BOOK "B" PAGE 51, DADE COUNTY, FLORIDA
RE-RECORDED IN PLAT BOOK 1 PAGE 61, PALM BEACH,
NOW MARTIN COUNTY, FLORIDA
PID: 343842000036000005; ORB 3120, PAGE 1418
PUBLIC RECORDS OF MARTIN COUNTY, FLORIDA

MATCH LINE SEE SHEET 12



**NORTHSTAR
GEOMATICS**

617 NW BAKER ROAD
PO BOX 2371, STUART, FLORIDA 34995
(772)781-6400 (772)781-6462 FAX
LICENSED BUSINESS NO. 7217

SKETCH AND LEGAL DESCRIPTION OF

PARCEL B

MARTIN COUNTY, FLORIDA

SHEET NO.

8

OF 12

PROJECT NO.

20-46.1

LOT 46 AND 47, GOMEZ GRANT
 PLAT BOOK "B" PAGE 51, DADE COUNTY, FLORIDA
 RE-RECORDED IN PLAT BOOK 1 PAGE 61, PALM BEACH,
 NOW MARTIN COUNTY, FLORIDA
 PID: 343842000042000003; ORB 2610, PAGE 0223, ORG
 1498 PAGE 962, ORB 1534, PAGE 2431, ORB 1554 PAGE
 2451, ORG 1621 PAGE 717, ORG 1996, PAGE 2220, ORG
 1046, PAGE 2380, ORG 814, PAGE 1291, ORG 1380,
 PAGE 1811, ORG 833, PAGE 2662
 PUBLIC RECORDS OF MARTIN COUNTY, FLORIDA

60' RIGHT OF WAY, SE GOMEZ ROAD
 PLATTED FIRST AVENUE GOMEZ GRANT
 PLAT BOOK "B" PAGE 51, DADE COUNTY, FLORIDA
 RE-RECORDED IN PLAT BOOK 1 PAGE 61, PALM
 BEACH, NOW MARTIN COUNTY, FLORIDA

N21°36'27"W
 660.01'

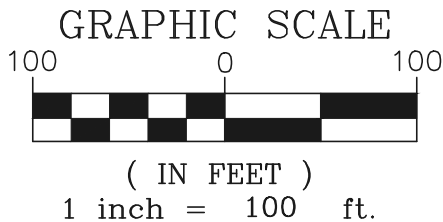
WEST LINE OF LOT 36
 BEARING BASIS

WEST LINE OF LOT 35

LOT 36, GOMEZ GRANT
 PLAT BOOK "B" PAGE 51, DADE COUNTY, FLORIDA
 RE-RECORDED IN PLAT BOOK 1 PAGE 61, PALM BEACH,
 NOW MARTIN COUNTY, FLORIDA
 PID: 343842000036000005; ORB 3120, PAGE 1418
 PUBLIC RECORDS OF MARTIN COUNTY, FLORIDA

LOT 35, GOMEZ GRANT
 PLAT BOOK "B" PAGE 51, DADE COUNTY, FLORIDA
 RE-RECORDED IN PLAT BOOK 1 PAGE 61, PALM
 BEACH, NOW MARTIN COUNTY, FLORIDA
 PID: 343842000030000008;
 RECORDING INFORMATION NOT AVAILABLE

POINT OF COMMENCEMENT
 SOUTHWEST CORNER OF LOT
 36, GOMEZ GRANT PLAT BOOK
 "B" PAGE 51, DADE COUNTY,
 FLORIDA, RE-RECORDED IN
 PLAT BOOK 1 PAGE 61, PALM
 BEACH, NOW MARTIN COUNTY,
 FLORIDA



MATCH LINE SEE SHEET 10



**NORTHSTAR
 GEOMATICS**

617 NW BAKER ROAD
 PO BOX 2371, STUART, FLORIDA 34995
 (772)781-6400 (772)781-6462 FAX
 LICENSED BUSINESS NO. 7217

SKETCH AND LEGAL DESCRIPTION OF

PARCEL B

MARTIN COUNTY, FLORIDA

SHEET NO.

9

OF 12

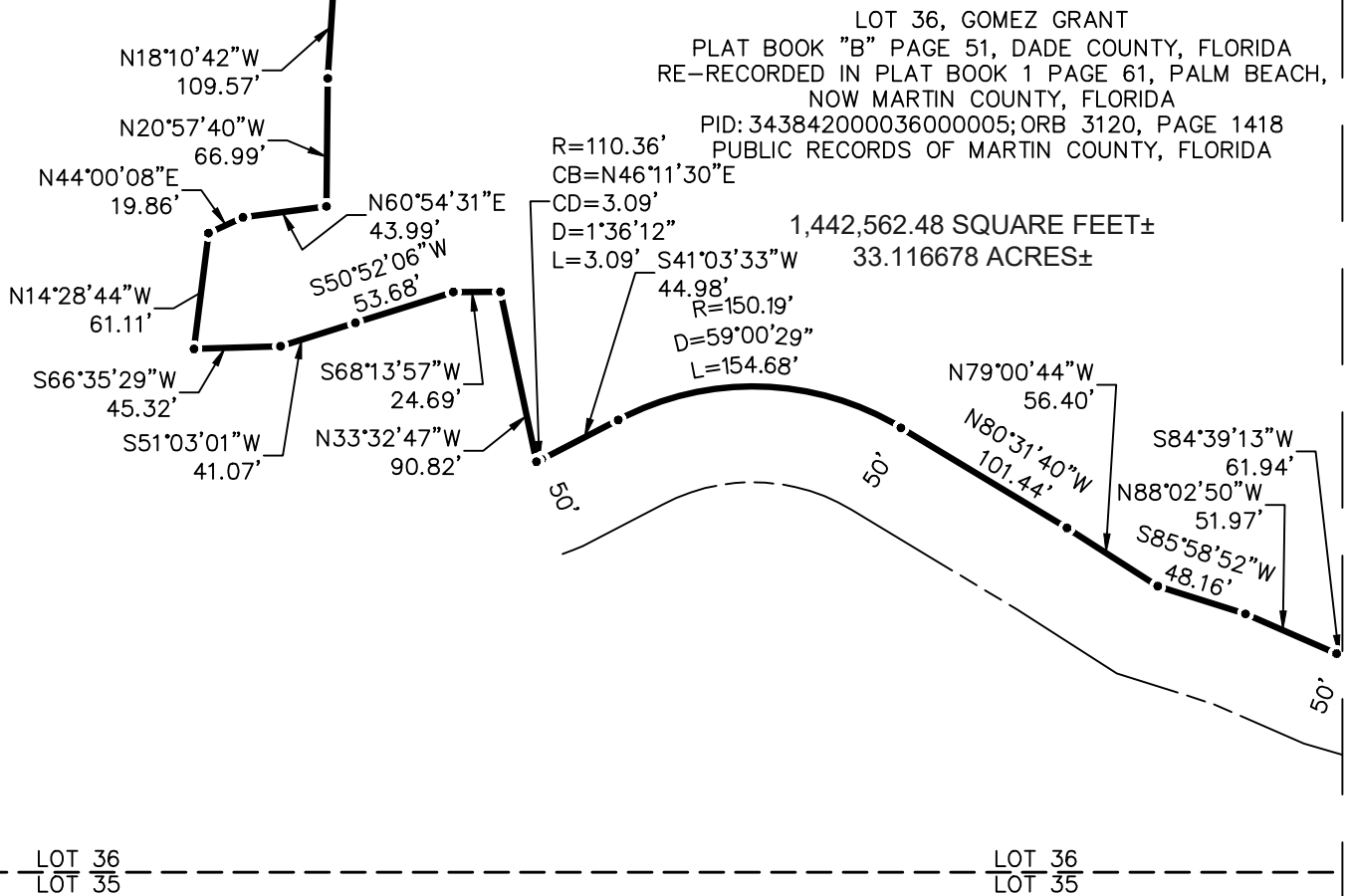
PROJECT NO.

20-46.1

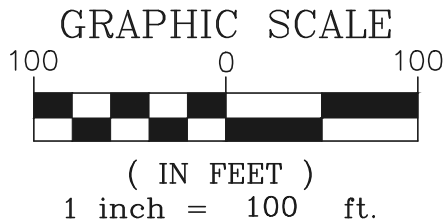
MATCH LINE SEE SHEET 6

MATCH LINE SEE SHEET 9

MATCH LINE SEE SHEET 11



LOT 35, GOMEZ GRANT
PLAT BOOK "B" PAGE 51, DADE COUNTY, FLORIDA
RE-RECORDED IN PLAT BOOK 1 PAGE 61, PALM
BEACH, NOW MARTIN COUNTY, FLORIDA
PID: 343842000030000008;
RECORDING INFORMATION NOT AVAILABLE



**NORTHSTAR
GEOMATICS**

617 NW BAKER ROAD
PO BOX 2371, STUART, FLORIDA 34995
(772)781-6400 (772)781-6462 FAX
LICENSED BUSINESS NO. 7217

SKETCH AND LEGAL DESCRIPTION OF

PARCEL B

MARTIN COUNTY, FLORIDA

SHEET NO.

10

OF 12

PROJECT NO.

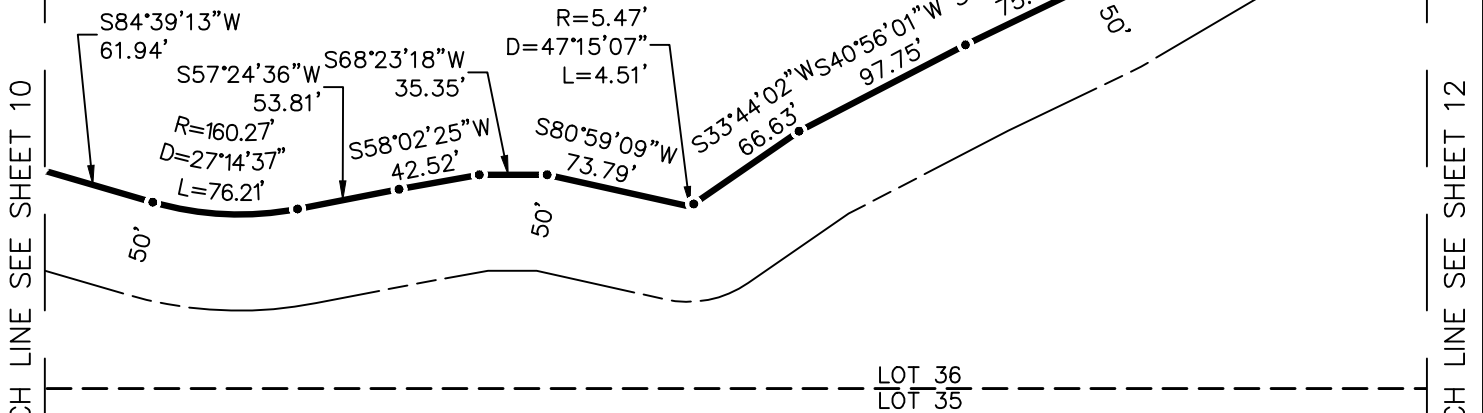
20-46.1

MATCH LINE SEE SHEET 7

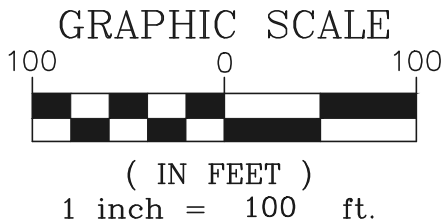
1,442,562.48 SQUARE FEET±
33.116678 ACRES±

LOT 36, GOMEZ GRANT
PLAT BOOK "B" PAGE 51, DADE COUNTY, FLORIDA
RE-RECORDED IN PLAT BOOK 1 PAGE 61, PALM BEACH,
NOW MARTIN COUNTY, FLORIDA
PID: 343842000036000005; ORB 3120, PAGE 1418
PUBLIC RECORDS OF MARTIN COUNTY, FLORIDA

R=79.66'
D=46°16'00"
L=64.32'



LOT 35, GOMEZ GRANT
PLAT BOOK "B" PAGE 51, DADE COUNTY, FLORIDA
RE-RECORDED IN PLAT BOOK 1 PAGE 61, PALM
BEACH, NOW MARTIN COUNTY, FLORIDA
PID: 343842000030000008;
RECORDING INFORMATION NOT AVAILABLE



**NORTHSTAR
GEOMATICS**
617 NW BAKER ROAD
PO BOX 2371, STUART, FLORIDA 34995
(772)781-6400 (772)781-6462 FAX
LICENSED BUSINESS NO. 7217

SKETCH AND LEGAL DESCRIPTION OF

PARCEL B

MARTIN COUNTY, FLORIDA

SHEET NO.

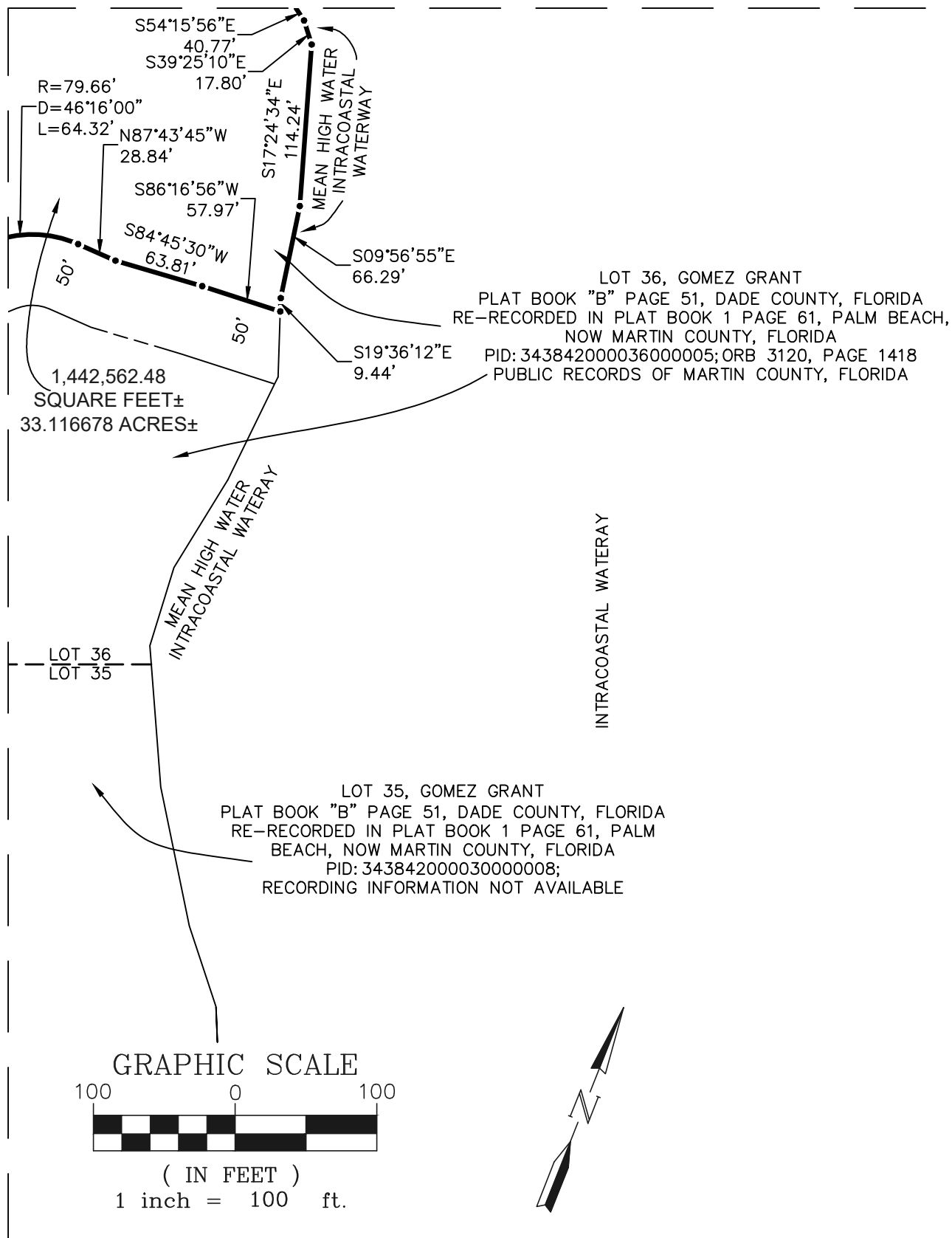
11

OF 12

PROJECT NO.

20-46.1

MATCH LINE SEE SHEET 11



**NORTHSTAR
GEOMATICS**

617 NW BAKER ROAD
PO BOX 2371, STUART, FLORIDA 34995
(772)781-6400 (772)781-6462 FAX
LICENSED BUSINESS NO. 7217

SKETCH AND LEGAL DESCRIPTION OF

PARCEL B

MARTIN COUNTY, FLORIDA

SHEET NO.

12

OF 12

PROJECT NO.

20-46.1