

EXHIBIT C

LEGAL DESCRIPTION

A ~~PARCEL~~ OF LAND IN LOTS 35 AND 36 ACCORDING TO THE PLAT OF THE GOMEZ GRANT AS RECORDED IN PLAT BOOK "B" PAGE 51 OF THE PUBLIC RECORDS OF DADE COUNTY, FLORIDA AND RE-RECORDED IN PLATBOOK 1 PAGE 61 OF THE PUBLIC RECORDS OF PALM BEACH COUNTY, NOW MARTIN COUNTY, FLORIDA, BEING MORE PARTICULARLY DESCRIBED AS FOLLOWS:

COMMENCE AT THE SOUTHWESTERLY CORNER OF LOT 36 OF SAID GOMEZ GRANT; THENCE S 21°36'50" E ALONG THE WEST LINE OF LOT 35 OF SAID GOMEZ GRANT, A DISTANCE OF 265.66 FEET; THENCE DEPARTING THE WEST LINE OF LOT 35 OF SAID GOMEZ GRANT N 68°24'31" E, A DISTANCE OF 318.31 FEET TO THE POINT OF BEGINNING; THENCE N 06°47'33" W, A DISTANCE OF 30.05 FEET; THENCE N 68°53'35" E, A DISTANCE OF 100.57 FEET; THENCE N 64°18'53" E, A DISTANCE OF 114.85 FEET; THENCE N 31°41'33" W, A DISTANCE OF 53.45 FEET; THENCE N 02°50'36" W, A DISTANCE OF 53.55 FEET; THENCE N 23°44'33" W, A DISTANCE OF 50.25 FEET; THENCE N 13°49'12" W, A DISTANCE OF 61.62 FEET; THENCE N 81°52'43" W, A DISTANCE OF 18.48 FEET; THENCE S 59°58'20" W, A DISTANCE OF 37.03 FEET; THENCE N 71°18'14" W, A DISTANCE OF 13.75 FEET; THENCE N 13°27'43" W, A DISTANCE OF 51.63 FEET; THENCE N 49°39'21" E, A DISTANCE OF 37.84 FEET; THENCE S 72°58'15" E, A DISTANCE OF 60.00 FEET; THENCE N 83°20'29" E, A DISTANCE OF 61.52 FEET; THENCE N 13°27'02" W, A DISTANCE OF 25.31 FEET; THENCE N 34°49'25" E, A DISTANCE OF 50.57 FEET; THENCE N 45°32'55" W, A DISTANCE OF 65.95 FEET; THENCE N 32°01'12" E, A DISTANCE OF 29.23 FEET; THENCE N 31°49'10" W, A DISTANCE OF 28.63 FEET; TO THE BEGINNING OF A NON-TANGENT CURVE CONCAVE TO THE LEFT HAVING A RADIUS OF 160.36 FEET; THE CHORD OF WHICH BEARS N 46°42'20" E, WITH A CHORD DISTANCE OF 11.49; THENCE ALONG THE ARC OF SAID CURVE THROUGH A CENTRAL ANGLE OF 04°06'27", FOR A DISTANCE OF 11.50 FEET; THENCE N 41°03'33" E, A DISTANCE OF 46.98 FEET; TO THE BEGINNING OF A NON-TANGENT CURVE CONCAVE TO THE RIGHT HAVING A RADIUS OF 100.19 FEET; THE CHORD OF WHICH BEARS N 69°54'06" E, WITH A CHORD DISTANCE OF 98.89; THENCE ALONG THE ARC OF SAID CURVE THROUGH A CENTRAL ANGLE OF 59°08'29", FOR A DISTANCE OF 103.42 FEET; THENCE S 80°31'40" E, A DISTANCE OF 100.77 FEET; THENCE S 79°00'44" E, A DISTANCE OF 62.33 FEET; THENCE N 85°58'52" E, A DISTANCE OF 52.14 FEET; THENCE S 88°02'50" E, A DISTANCE OF 52.55 FEET; THENCE N 84°39'13" E, A DISTANCE OF 65.12 FEET; TO THE BEGINNING OF A CURVE CONCAVE TO THE LEFT WITH A RADIUS OF 210.27 FEET; THENCE ALONG THE ARC OF SAID CURVE THROUGH A CENTRAL ANGLE OF 27°14'37", A DISTANCE OF 99.98 FEET; THENCE N 57°24'36" E, A DISTANCE OF 53.53 FEET; THENCE N 58°02'25" E, A DISTANCE OF 37.72 FEET; THENCE N 68°23'18" E, A DISTANCE OF 25.30 FEET; THENCE N 80°59'09" E, A DISTANCE OF 68.27 FEET; TO THE BEGINNING OF A CURVE CONCAVE TO THE LEFT WITH A RADIUS OF 55.47 FEET; THENCE ALONG THE ARC OF SAID CURVE THROUGH A CENTRAL ANGLE OF 47°15'07", A DISTANCE OF 45.74 FEET; THENCE N 33°44'02" E, A DISTANCE OF 63.49 FEET; THENCE N 40°56'01" E, A DISTANCE OF 93.86 FEET; THENCE N 42°38'31" E, A DISTANCE OF 76.76 FEET; THENCE N 37°54'27" E, A DISTANCE OF 129.42 FEET; THENCE N 46°00'14" E, A DISTANCE OF 46.71 FEET; TO THE BEGINNING OF A CURVE CONCAVE TO THE RIGHT WITH A RADIUS OF 29.66 FEET; THENCE ALONG THE ARC OF SAID CURVE THROUGH A CENTRAL ANGLE OF 46°16'00", A DISTANCE OF 23.95 FEET; THENCE S 87°43'45" E, A DISTANCE OF 32.12 FEET; THENCE N 84°45'30" E, A DISTANCE OF 66.43 FEET; THENCE N 86°16'56" E, A DISTANCE OF 69.16 FEET TO THE MEAN HIGH WATER LINE OF THE INTRACOASTAL WATERWAY; THENCE S 04°21'13" W ALONG THE MEAN HIGH WATER LINE OF THE INTRACOASTAL WATERWAY, A DISTANCE OF 75.21 FEET; THENCE S 09°58'34" W, A DISTANCE OF 72.58 FEET; THENCE S 04°30'28" E, A DISTANCE OF 57.75 FEET; THENCE S 26°02'27" E, A DISTANCE OF 100.00 FEET; THENCE S 33°14'26" E, A DISTANCE OF 100.00 FEET; THENCE S 39°56'09" E, A DISTANCE OF 60.00 FEET; THENCE S 23°43'43" E, A DISTANCE OF 25.08 FEET; THENCE DEPARTING THE MEAN HIGH WATER LINE OF THE INTRACOASTAL WATERWAY S 68°24'31" W, A DISTANCE OF 1636.86 FEET; TO THE POINT OF BEGINNING.

CONTAINING 548,311.96 SQUARE FEET OR 12.58751 ACRES MORE OR LESS.



**NORTHSTAR
GEOMATICS**

617 NW BAKER ROAD
PO BOX 2371, STUART, FLORIDA 34995
(772)781-6400 (772)781-6462 FAX
LICENSED BUSINESS NO. 7217

SKETCH AND LEGAL DESCRIPTION OF

PARCEL C

MARTIN COUNTY, FLORIDA

SHEET NO.

1
OF 7

PROJECT NO.

20-046.1

SURVEYOR'S NOTES

1. BEARING BASIS IS THE WEST LINE OF LOT 35, GOMEZ GRANT PLAT BOOK "B" PAGE 51, DADE COUNTY, FLORIDA RE-RECORDED IN PLAT BOOK 1 PAGE 61, PALM BEACH, NOW MARTIN COUNTY, FLORIDA HAVING A BEARING OF NORTH 21°36'50" WEST
2. THIS IS NOT A SURVEY.
3. THIS LEGAL DESCRIPTION SHALL NOT BE VALID UNLESS PROVIDED IN ITS ENTIRETY CONSISTING OF 15 SHEETS, WITH SHEETS 6 THROUGH 15 BEING THE SKETCH OF DESCRIPTION.
4. THIS DOCUMENT MAY BE REPRODUCED UPON REQUEST IN AN ALTERNATIVE FORMAT BY CONTACTING THE COUNTY ADA COORDINATOR (772)320-3131, THE COUNTY ADMINISTRATION OFFICE (772-288-5400), FLORIDA RELAY 711, OR BY COMPLETING OUR ACCESSIBILITY FEEDBACK FORM AT WWW.MARTIN.FL.US/ACCESSIBILITY-FEEDBACK.

LEGEND

CB = CHORD BEARING
CD = CHORD DISTANCE
COR. = CORNER
D = DELTA
DB = DEED BOOK
FDOT = FLORIDA DEPARTMENT OF TRANSPORTATION
L = ARC LENGTH
ORB = OFFICIAL RECORDS BOOK
PC = POINT OF CURVATURE
PCN = PARCEL CONTROL NUMBER
PI = POINT OF INTERSECTION
PG = PAGE
POB = POINT OF BEGINNING
POC = POINT OF COMMENCEMENT
PT = POINT OF TANGENCY
R = RADIUS
R/W = RIGHT-OF-WAY

SURVEYOR'S CERTIFICATE

I HEREBY CERTIFY THAT THIS SKETCH AND LEGAL DESCRIPTION COMPLIES WITH THE STANDARDS OF PRACTICE SET FORTH BY THE FLORIDA BOARD OF PROFESSIONAL SURVEYORS AND MAPPERS IN CHAPTER 5J-17, FLORIDA ADMINISTRATIVE CODE, PURSUANT TO SECTION 5J-17.050 - 17.052.

FRANK VELDHUIS, P.S.M.
FLORIDA REGISTRATION NO. 6582

DATE



**NORTHSTAR
GEOMATICS**

617 NW BAKER ROAD
PO BOX 2371, STUART, FLORIDA 34995
(772)781-6400 (772)781-6462 FAX
LICENSED BUSINESS NO. 7217

SKETCH AND LEGAL DESCRIPTION OF

PARCEL C

MARTIN COUNTY, FLORIDA

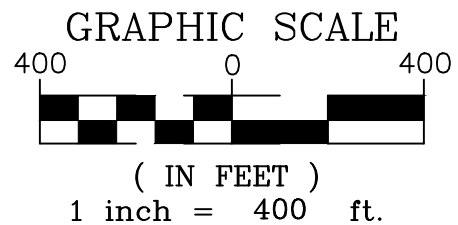
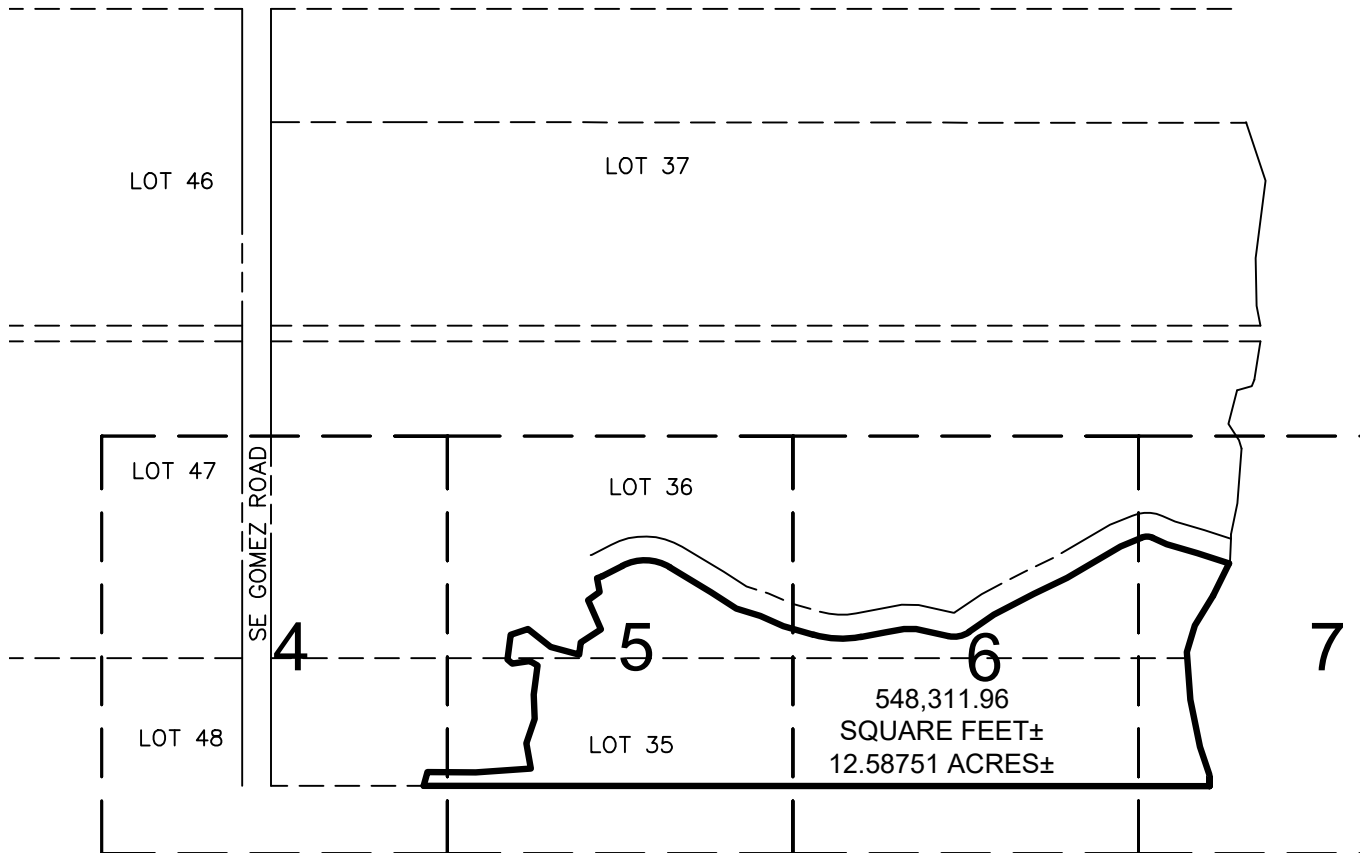
SHEET NO.

2
OF 7

PROJECT NO.

20-046.1

SHEET INDEX



**NORTHSTAR
GEOMATICS**

617 NW BAKER ROAD
PO BOX 2371, STUART, FLORIDA 34995
(772)781-6400 (772)781-6462 FAX
LICENSED BUSINESS NO. 7217

SKETCH AND LEGAL DESCRIPTION OF

PARCEL C

MARTIN COUNTY, FLORIDA

SHEET NO.

3
OF 7

PROJECT NO.

20-046.1

LOT 46 AND 47, GOMEZ GRANT
 PLAT BOOK "B" PAGE 51, DADE COUNTY, FLORIDA
 RE-RECORDED IN PLAT BOOK 1 PAGE 61, PALM BEACH,
 NOW MARTIN COUNTY, FLORIDA
 PID: 343842000042000003; ORB 2610, PAGE 0223, ORG
 1498 PAGE 962, ORB 1534, PAGE 2431, ORB 1554 PAGE
 2451, ORG 1621 PAGE 717, ORG 1996, PAGE 2220, ORG
 1046, PAGE 2380, ORG 814, PAGE 1291, ORG 1380,
 PAGE 1811, ORG 833, PAGE 2662
 PUBLIC RECORDS OF MARTIN COUNTY, FLORIDA

60' RIGHT OF WAY, SE GOMEZ ROAD
 PLATTED FIRST AVENUE GOMEZ GRANT
 PLAT BOOK "B" PAGE 51, DADE COUNTY, FLORIDA
 RE-RECORDED IN PLAT BOOK 1 PAGE 61, PALM
 BEACH, NOW MARTIN COUNTY, FLORIDA

WEST LINE OF LOT 36

LOT 36, GOMEZ GRANT
 PLAT BOOK "B" PAGE 51, DADE COUNTY, FLORIDA
 RE-RECORDED IN PLAT BOOK 1 PAGE 61, PALM BEACH,
 NOW MARTIN COUNTY, FLORIDA
 PID: 3438420000360000005; ORB 3120, PAGE 1418
 PUBLIC RECORDS OF MARTIN COUNTY, FLORIDA

POINT OF COMMENCEMENT
 SOUTHWEST CORNER OF LOT
 36, GOMEZ GRANT PLAT BOOK
 "B" PAGE 51, DADE COUNTY,
 FLORIDA, RE-RECORDED IN
 PLAT BOOK 1 PAGE 61, PALM
 BEACH, NOW MARTIN COUNTY,
 FLORIDA

LOT 47
 LOT 48

LOT 36
 LOT 35

LOT 35, GOMEZ GRANT
 PLAT BOOK "B" PAGE 51, DADE COUNTY, FLORIDA
 RE-RECORDED IN PLAT BOOK 1 PAGE 61, PALM
 BEACH, NOW MARTIN COUNTY, FLORIDA
 PID: 3438420000300000008;
 RECORDING INFORMATION NOT AVAILABLE

S21°36'50"E
 265.66'

WEST LINE OF LOT 35
 BEARING BASIS

548,311.96 SQUARE FEET±
 12.58751 ACRES±

N68°53'35"E
 100.57'

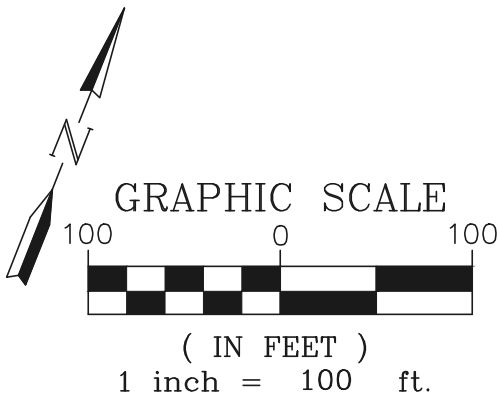
N06°47'33"W
 30.05'

N68°24'31"E
 318.31'

POINT OF
 BEGINNING

S68°24'31"W
 1636.86'

MATCH LINE SEE SHEET 5



**NORTHSTAR
 GEOMATICS**

617 NW BAKER ROAD
 PO BOX 2371, STUART, FLORIDA 34995
 (772)781-6400 (772)781-6462 FAX
 LICENSED BUSINESS NO. 7217

SKETCH AND LEGAL DESCRIPTION OF

PARCEL C

MARTIN COUNTY, FLORIDA

SHEET NO.

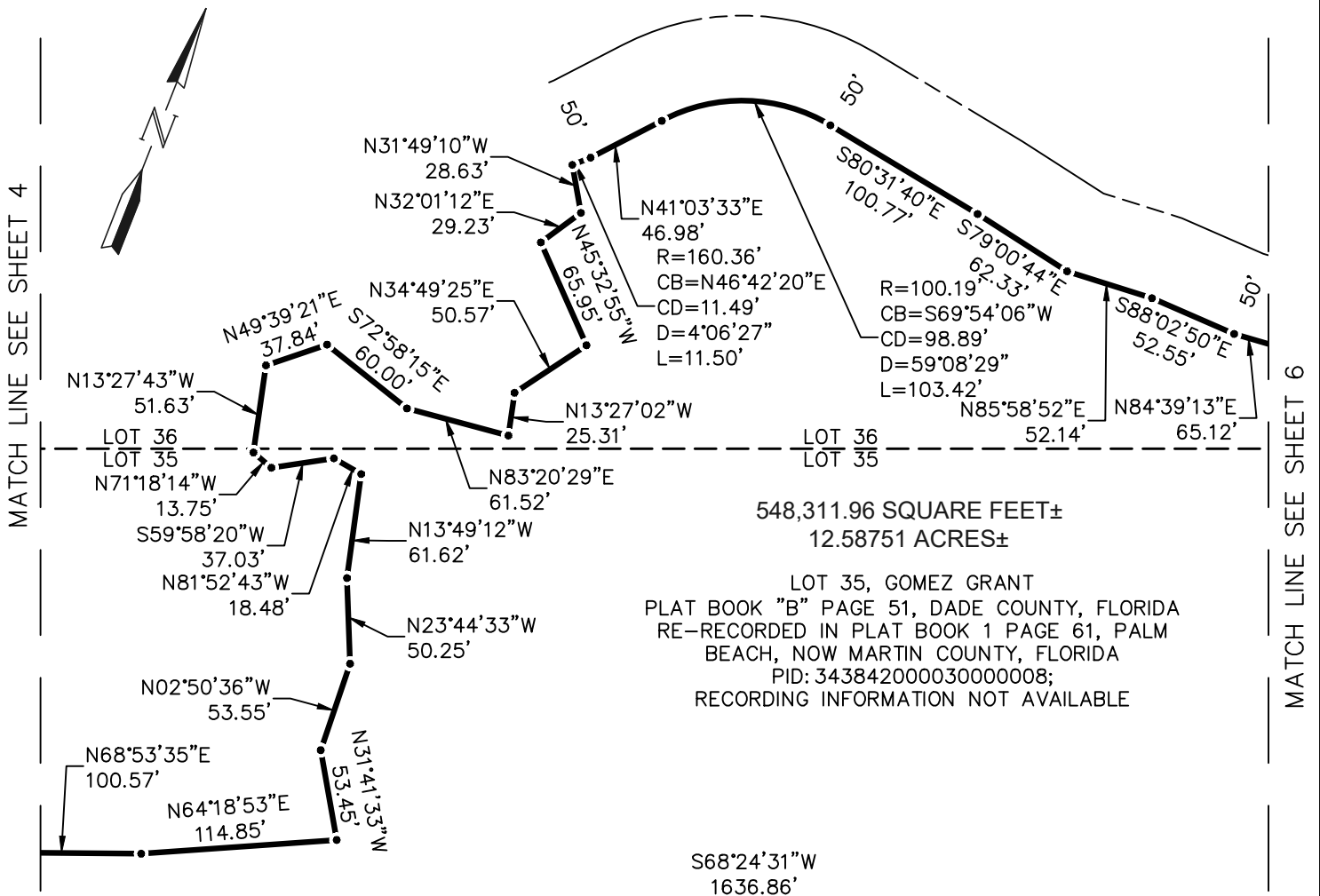
4

OF 7

PROJECT NO.

20-046.1

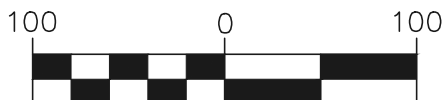
LOT 36, GOMEZ GRANT
PLAT BOOK "B" PAGE 51, DADE COUNTY, FLORIDA
RE-RECORDED IN PLAT BOOK 1 PAGE 61, PALM BEACH,
NOW MARTIN COUNTY, FLORIDA
PID: 343842000036000005; ORB 3120, PAGE 1418
PUBLIC RECORDS OF MARTIN COUNTY, FLORIDA



NORTHSTAR GEOMATICS

20-46.1

GRAPHIC SCALE



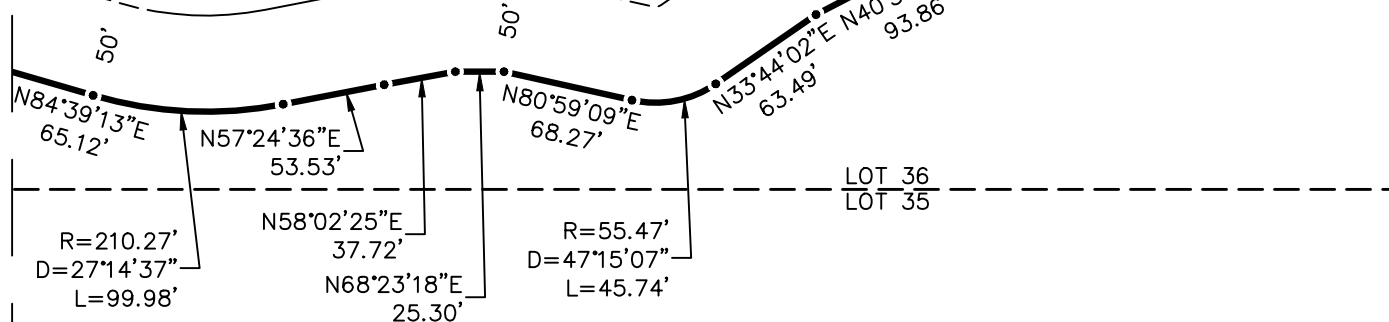
(IN FEET)
1 inch = 100 ft.



LOT 36, GOMEZ GRANT
PLAT BOOK "B" PAGE 51, DADE COUNTY, FLORIDA
RE-RECORDED IN PLAT BOOK 1 PAGE 61, PALM BEACH,
NOW MARTIN COUNTY, FLORIDA
PID: 343842000036000005; ORB 3120, PAGE 1418
PUBLIC RECORDS OF MARTIN COUNTY, FLORIDA

MATCH LINE SEE SHEET 5

MATCH LINE SEE SHEET 7



548,311.96 SQUARE FEET±
12.58751 ACRES±

LOT 35, GOMEZ GRANT
PLAT BOOK "B" PAGE 51, DADE COUNTY, FLORIDA
RE-RECORDED IN PLAT BOOK 1 PAGE 61, PALM
BEACH, NOW MARTIN COUNTY, FLORIDA
PID: 343842000030000008;
RECORDING INFORMATION NOT AVAILABLE

S68°24'31"W
1636.86'



**NORTHSTAR
GEOMATICS**

617 NW BAKER ROAD
PO BOX 2371, STUART, FLORIDA 34995
(772)781-6400 (772)781-6462 FAX
LICENSED BUSINESS NO. 7217

SKETCH AND LEGAL DESCRIPTION OF

PARCEL C

MARTIN COUNTY, FLORIDA

SHEET NO.

6
OF 7

PROJECT NO.

20-46.1

