



UNICORP PALM PIKE - PALM CITY

TREE NO.	COMMON NAME	DBH (INCHES)	DISPOSITION	*PROTECTED TREE LOCATION INTERIOR/PERIMETER
39	Laurel Oak*	12	REMAIN	Interior
40	Laurel Oak*	9.5	remove	Interior
41	Laurel Oak*	9	remove	Interior
42	Live Oak*	14	remove	Interior
43	Live Oak*	13	remove	Interior
44	Laurel Oak*	10.5	remove	Interior
80	Laurel Oak*	8.5	remove	Interior
85	Laurel Oak*	8	remove	Interior
86	Slash Pine*	15	remove	Interior
126	Laurel Oak*	27	remove	Interior
148	Water Oak*	13.5	remove	Interior
149	Water Oak*	11.5	remove	Interior

149	Water Oak	11.7	Remove	Interior
TOTAL PROTECTED DBH ON LOT 5:			151.5	NOTE: TREES REMARKED AS "OFFSITE" NOT COUNTED TOWARDS
PROTECTED DBH TO REMAIN:			139	FULFILLING ANY LANDSCAPE REQUIREMENTS FOR THIS SITE;
PROTECTED DBH TO BE REMOVED:			12.5	THESE TREES SHALL REMAIN UNDISTURBED & PROTECTED; THEY
TOTAL PROTECTED TREES ON LOT 5:			11	ARE NOT INCLUDED IN "PROTECTED TREES TO REMAIN,"
PROTECTED TREES TO REMAIN:			1 (0.09%)	"PROTECTED DBH TO REMAIN," OR "PROTECTED DBH
*PROTECTED TREE: Per Sec 4.666 - Tree Protection				TO BE REMOVED" TOTALS SHOWN ON THIS CHART

**\*PROTECTED TREE: Per Sec.4.666 - Tree Protection**  
Any hardwood native tree  $\geq 8"$  DBH  
Any native hardwood tree  $\geq 4"$  DBH or any native softwood,  
Incl. pine trees,  $\geq 8"$  DBH in the perimeter area  
Any tree within a canopy road tree protection zone,  
except prohibited trees.

ONLY PROTECTED TREES THAT ARE REMOVED  
REQUIRE MITIGATION; SEE MITIGATION CALCS  
ON THIS SHEET FOR REMOVED PROTECTED  
TREES; SEE LANDSCAPE PLAN FOR LOCATION  
OF PROPOSED MITIGATION TREES

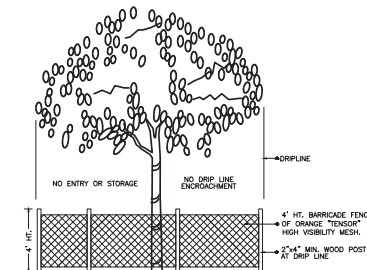
**NOTE:** ONLY TREES TO BE PRESERVED IN PERPETUITY THROUGHOUT ALL FUTURE PHASES ARE CREDITED (AS NOTED ON THE MASTER DISPOSITION CHART) TOWARDS THE REFORESTATION/ TREE MITIGATION REQUIREMENTS PER SEC.4.666.D.1.b.

THE MASTER TREE DISPOSITION CHARTS ABOVE (SHOWING PROTECTED & NON-PROTECTED EXISTING TREES) DEMONSTRATE TREE CREDITS APPLIED TO REFORESTATION REQUIREMENTS (PER SEC.4.666.D.1.b) & TREE CREDITS TO BE APPLIED TO LANDSCAPE REQUIREMENTS (PER SEC.4.664.F.1 TABLE)

SEE SHEET L-2.0A FOR LANDSCAPE PLAN.

TREE PROTECTION  
BARRICADE

\* DENOTES PROTECTED TREES



**TREE PRESERVATION  
BARRICADE FENCING DETAIL**

51





NOTE: ALL ABOVE GROUND MECHANICAL EQUIPMENT SUCH AS, BUT NOT LIMITED TO, EXTERIOR UTILITY BOXES, METERS, AND TRANSFORMERS NOT CURRENTLY KNOWN OR DEPICTED SHALL BE VISUALLY SCREENED WITH LIVE GREENERY A MINIMUM OF 6' ABOVE TOP OF EQUIPMENT. BACK FLOW PREVENTERS SHALL BE PAINTED TO MATCH THE PRINCIPAL STRUCTURE.

REGULAR LANDSCAPE MAINTENANCE SHALL BE PROVIDED FOR REPAIR OR REPLACEMENT, WHERE NECESSARY, OF ANY SCREENING OR BUFFERING REQUIRED AS SHOWN ON THIS PLAN. REGULAR LANDSCAPE MAINTENANCE SHALL BE PROVIDED FOR THE REPAIR OR REPLACEMENT OF REQUIRED WALLS, FENCES OR STRUCTURES TO A STRUCTURALLY SOUND CONDITION AS SHOWN ON THIS PLAN.

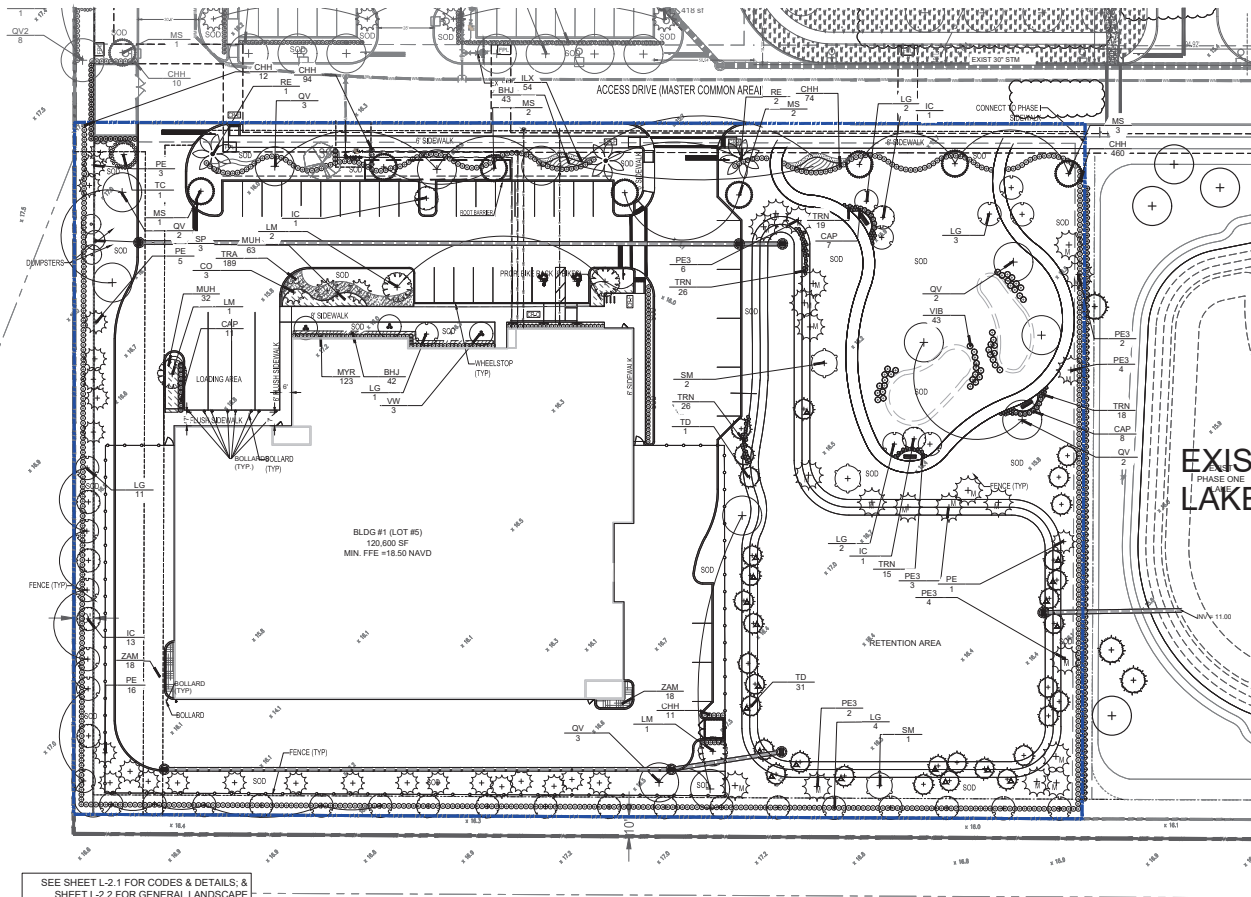
DURING PERIODS OF DEVELOPMENT & CONSTRUCTION, THE AREAS WITHIN THE DRAINAGE OF PRESERVED TREES SHALL BE MAINTAINED AT THEIR ORIGINAL GRADE WITH PERVIOUS LANDSCAPE MATERIAL. WITHIN THESE AREAS, THERE SHALL BE NO TRENCHING OR CUTTING OF ROOTS; NO FILL, COMPACTION, OR REMOVAL OF SOIL; & NO USE OF CONCRETE, PAINT, CHEMICALS, OR OTHER FOREIGN SUBSTANCES.

MULCH MATERIAL TO A MINIMUM COMPACTED DEPTH OF 3 INCHES IS TO BE PROVIDED FOR ALL PLANTING AREAS WHEN USED TO SUPPLEMENT GROUND COVER. CYPRESS MULCH IS PROHIBITED IN ALL LANDSCAPED AREAS.

NO USE SHALL BE MADE OF, AND NO DEVELOPMENT ACTIVITY SHALL BE PERMITTED IN LAND USE BUFFERS AND PERIMETER LANDSCAPE AREAS, EXCEPT FOR: 1. PLANTING MATERIAL APPROVED AS PART OF THE LANDSCAPE PLAN. 2. CONCRETE OR UNDERGROUND UTILITIES WHICH CROSS THESE AREAS AND DO NOT INTERFERE WITH THE WATER-ORIENTED REQUIRED PLANT MATERIAL. 3. GRADE ADJUSTMENTS WITHIN SLOPE NO STEEPER THAN 30:10, WHICH CAN SUPPORT THE REQUIRED LANDSCAPING MATERIALS.

REQUIRED LANDSCAPING SHALL BE MAINTAINED SO AS TO AT ALL TIMES PRESENT A HEALTHY, NEAT, & ORDERLY APPEARANCE, FREE OF REFUSE & DEBRIS. IF VEGETATION WHICH IS REQUIRED TO BE PLANTED DIES IT SHALL BE REPLACED WITH EQUIVALENT VEGETATION. ALL TREES FOR WHICH CREDIT WAS AWARDED AND WHICH SUBSEQUENTLY DIE, SHALL BE REPLACED BY THE REQUISITE NUMBER OF LIVING TREES ACCORDING TO THE STANDARDS ESTABLISHED IN THE MARTIN COUNTY LANDSCAPE CODE.

ALL PROHIBITED EXOTIC PLANT SPECIES SHALL BE REMOVED FROM THE SITE PRIOR TO ISSUANCE OF A CERTIFICATE OF OCCUPANCY. PERPETUAL MAINTENANCE IS REQUIRED TO PROHIBIT THE REESTABLISHMENT OF INVASIVE EXOTIC SPECIES WITHIN PRESERVATION AREAS AND PLANTED LANDSCAPE OR LAKE UTLITORIAL AREAS AS PROVIDED ON THE PLANS APPROVED WITH THE DEVELOPMENT ORDER.



#### PLANT SCHEDULE

TREES	CODE	QTY	COMMON NAME	BOTANICAL NAME	SPECIFICATIONS	COL/DB	HEIGHT	SPREAD	NATIVE	SEED	REMARKS
1	00	3	Sanibel	<i>Chrysophyllum glaberrimum</i>	8-10	TCM	12-16	5-6	Yes	High	0 CT
2	01	4	Sanibel	<i>Neu. sericea</i>	8-10	TCM	12-16	5	Yes	High	0 CT
3	02	25	Lavender Crape Myrtle	<i>Lagerströmia indica 'Tender'</i>	8-10	TCM	14-16	7	No	High	4.0 CT, STANDARD
4	03	4	Ministry Sweet Gum	<i>Liquidambar styraciflua 'Ministry'</i>	8-10	TCM	12-16	4-5	Yes	High	0 CT
5	04	1	Sweet Bay	<i>Myrsine argentea</i>	8-10	TCM	12-16	2	Yes	High	4.0 CT
6	05	15	Shade Pine	<i>Pinus strobus var. densa</i>	8-10	TCM	12-16	10-12	Yes	High	0 CT
7	06	21	Shade Pine	<i>Pinus strobus var. densa</i>	8-10	TCM	12-16	8	Yes	High	7 CT, Covered @ 10
8	07	23	Southern Live Oak	<i>Quercus virginiana</i>	8-10	TCM	12-16	2	Yes	High	0 CT
9	08	3	Wax Palm (Manjaro)	<i>Sabal palmetto</i>	8-10	TCM	12-16	5-6	Yes	High	0 CT
10	09	1	Yellow Trumpet Tree	<i>Tillandsia cordata</i>	8-10	TCM	12-16	5	No	High	0 CT
11	10	12	Wax Palm	<i>Trachycarpus fortunei</i>	8-10	TCM	12-16	10-12	Yes	High	0 CT
12	11	1	Wax Palm	<i>Trachycarpus fortunei</i>	8-10	TCM	12-16	10-12	Yes	High	0 CT
13	12	1	Wax Palm	<i>Trachycarpus fortunei</i>	8-10	TCM	12-16	10-12	Yes	High	0 CT
14	13	1	Wax Palm	<i>Trachycarpus fortunei</i>	8-10	TCM	12-16	10-12	Yes	High	0 CT
15	14	1	Wax Palm	<i>Trachycarpus fortunei</i>	8-10	TCM	12-16	10-12	Yes	High	0 CT
16	15	1	Wax Palm	<i>Trachycarpus fortunei</i>	8-10	TCM	12-16	10-12	Yes	High	0 CT
17	16	1	Wax Palm	<i>Trachycarpus fortunei</i>	8-10	TCM	12-16	10-12	Yes	High	0 CT
18	17	1	Wax Palm	<i>Trachycarpus fortunei</i>	8-10	TCM	12-16	10-12	Yes	High	0 CT
19	18	1	Wax Palm	<i>Trachycarpus fortunei</i>	8-10	TCM	12-16	10-12	Yes	High	0 CT
20	19	1	Wax Palm	<i>Trachycarpus fortunei</i>	8-10	TCM	12-16	10-12	Yes	High	0 CT
21	20	1	Wax Palm	<i>Trachycarpus fortunei</i>	8-10	TCM	12-16	10-12	Yes	High	0 CT
22	21	1	Wax Palm	<i>Trachycarpus fortunei</i>	8-10	TCM	12-16	10-12	Yes	High	0 CT
23	22	1	Wax Palm	<i>Trachycarpus fortunei</i>	8-10	TCM	12-16	10-12	Yes	High	0 CT
24	23	1	Wax Palm	<i>Trachycarpus fortunei</i>	8-10	TCM	12-16	10-12	Yes	High	0 CT
25	24	1	Wax Palm	<i>Trachycarpus fortunei</i>	8-10	TCM	12-16	10-12	Yes	High	0 CT
26	25	1	Wax Palm	<i>Trachycarpus fortunei</i>	8-10	TCM	12-16	10-12	Yes	High	0 CT
27	26	1	Wax Palm	<i>Trachycarpus fortunei</i>	8-10	TCM	12-16	10-12	Yes	High	0 CT
28	27	1	Wax Palm	<i>Trachycarpus fortunei</i>	8-10	TCM	12-16	10-12	Yes	High	0 CT
29	28	1	Wax Palm	<i>Trachycarpus fortunei</i>	8-10	TCM	12-16	10-12	Yes	High	0 CT
30	29	1	Wax Palm	<i>Trachycarpus fortunei</i>	8-10	TCM	12-16	10-12	Yes	High	0 CT
31	30	1	Wax Palm	<i>Trachycarpus fortunei</i>	8-10	TCM	12-16	10-12	Yes	High	0 CT
32	31	1	Wax Palm	<i>Trachycarpus fortunei</i>	8-10	TCM	12-16	10-12	Yes	High	0 CT
33	32	1	Wax Palm	<i>Trachycarpus fortunei</i>	8-10	TCM	12-16	10-12	Yes	High	0 CT
34	33	1	Wax Palm	<i>Trachycarpus fortunei</i>	8-10	TCM	12-16	10-12	Yes	High	0 CT
35	34	1	Wax Palm	<i>Trachycarpus fortunei</i>	8-10	TCM	12-16	10-12	Yes	High	0 CT
36	35	1	Wax Palm	<i>Trachycarpus fortunei</i>	8-10	TCM	12-16	10-12	Yes	High	0 CT
37	36	1	Wax Palm	<i>Trachycarpus fortunei</i>	8-10	TCM	12-16	10-12	Yes	High	0 CT
38	37	1	Wax Palm	<i>Trachycarpus fortunei</i>	8-10	TCM	12-16	10-12	Yes	High	0 CT
39	38	1	Wax Palm	<i>Trachycarpus fortunei</i>	8-10	TCM	12-16	10-12	Yes	High	0 CT
40	39	1	Wax Palm	<i>Trachycarpus fortunei</i>	8-10	TCM	12-16	10-12	Yes	High	0 CT
41	40	1	Wax Palm	<i>Trachycarpus fortunei</i>	8-10	TCM	12-16	10-12	Yes	High	0 CT
42	41	1	Wax Palm	<i>Trachycarpus fortunei</i>	8-10	TCM	12-16	10-12	Yes	High	0 CT
43	42	1	Wax Palm	<i>Trachycarpus fortunei</i>	8-10	TCM	12-16	10-12	Yes	High	0 CT
44	43	1	Wax Palm	<i>Trachycarpus fortunei</i>	8-10	TCM	12-16	10-12	Yes	High	0 CT
45	44	1	Wax Palm	<i>Trachycarpus fortunei</i>	8-10	TCM	12-16	10-12	Yes	High	0 CT
46	45	1	Wax Palm	<i>Trachycarpus fortunei</i>	8-10	TCM	12-16	10-12	Yes	High	0 CT
47	46	1	Wax Palm	<i>Trachycarpus fortunei</i>	8-10	TCM	12-16	10-12	Yes	High	0 CT
48	47	1	Wax Palm	<i>Trachycarpus fortunei</i>	8-10	TCM	12-16	10-12	Yes	High	0 CT
49	48	1	Wax Palm	<i>Trachycarpus fortunei</i>	8-10	TCM	12-16	10-12	Yes	High	0 CT
50	49	1	Wax Palm	<i>Trachycarpus fortunei</i>	8-10	TCM	12-16	10-12	Yes	High	0 CT
51	50	1	Wax Palm	<i>Trachycarpus fortunei</i>	8-10	TCM	12-16	10-12	Yes	High	0 CT
52	51	1	Wax Palm	<i>Trachycarpus fortunei</i>	8-10	TCM	12-16	10-12	Yes	High	0 CT
53	52	1	Wax Palm	<i>Trachycarpus fortunei</i>	8-10	TCM	12-16	10-12	Yes	High	0 CT
54	53	1	Wax Palm	<i>Trachycarpus fortunei</i>	8-10	TCM	12-16	10-12	Yes	High	0 CT
55	54	1	Wax Palm	<i>Trachycarpus fortunei</i>	8-10	TCM	12-16	10-12	Yes	High	0 CT
56	55	1	Wax Palm	<i>Trachycarpus fortunei</i>	8-10	TCM	12-16	10-12	Yes	High	0 CT
57	56	1	Wax Palm	<i>Trachycarpus fortunei</i>	8-10	TCM	12-16	10-12	Yes	High	0 CT
58	57	1	Wax Palm	<i>Trachycarpus fortunei</i>	8-10	TCM	12-16	10-12	Yes	High	0 CT
59	58	1	Wax Palm	<i>Trachycarpus fortunei</i>	8-10	TCM	12-16	10-12	Yes	High	0 CT
60	59	1	Wax Palm	<i>Trachycarpus fortunei</i>	8-10	TCM	12-16	10-12	Yes	High	0 CT
61	60	1	Wax Palm	<i>Trachycarpus fortunei</i>	8-10	TCM	12-16	10-12	Yes	High	0 CT
62	61	1	Wax Palm	<i>Trachycarpus fortunei</i>	8-10	TCM	12-16	10-12	Yes	High	0 CT
63	62	1	Wax Palm	<i>Trachycarpus fortunei</i>	8-10	TCM	12-16	10-12	Yes	High	0 CT
64	63	1	Wax Palm	<i>Trachycarpus fortunei</i>	8-10	TCM	12-16	10-12	Yes	High	0 CT
65	64	1	Wax Palm	<i>Trachycarpus fortunei</i>	8-10	TCM	12-16	10-12	Yes	High	0 CT
66	65	1	Wax Palm	<i>Trachycarpus fortunei</i>	8-10	TCM	12-16	10-12	Yes	High	0 CT
67	66	1	Wax Palm	<i>Trachycarpus fortunei</i>	8-10	TCM	12-16	10-12	Yes	High	0 CT
68	67	1	Wax Palm	<i>Trachycarpus fortunei</i>	8-10	TCM	12-16	10-12	Yes	High	0 CT
69	68	1	Wax Palm	<i>Trachycarpus fortunei</i>	8-10	TCM	12-16	10-12	Yes	High	0 CT
70	69	1	Wax Palm	<i>Trachycarpus fortunei</i>	8-10	TCM	12-16	10-12	Yes	High	0 CT
71	70	1	Wax Palm	<i>Trachycarpus fortunei</i>	8-10	TCM	12-16	10-12	Yes	High	0 CT
72	71	1	Wax Palm	<i>Trachycarpus fortunei</i>	8-10	TCM	12-16	10-12	Yes	High	0 CT
73	72	1	Wax Palm	<i>Trachycarpus fortunei</i>	8-10	TCM	12-16	10-12	Yes	High	0 CT
74	73	1	Wax Palm	<i>Trachycarpus fortunei</i>	8-10	TCM	12-16	10-12	Yes	High	0 CT
75	74	1	Wax Palm	<i>Trachycarpus fortunei</i>	8-10	TCM	12-16	10-12	Yes	High	0 CT
76	75	1	Wax Palm	<i>Trachycarpus fortunei</i>	8-10	TCM	12-16	10-12	Yes	High	0 CT
77	76	1	Wax Palm	<i>Trachycarpus fortunei</i>	8-10	TCM	12-16	10-12	Yes	High	0 CT
78	77	1	Wax Palm	<i>Trachycarpus fortunei</i>	8-10	TCM	12-16	10-12	Yes	High	0 CT
79	78	1	Wax Palm	<i>Trachycarpus fortunei</i>	8-10	TCM	12-16	10-12	Yes	High	0 CT
80	79	1	Wax Palm	<i>Trachycarpus fortunei</i>	8-10	TCM	12-16	10-12	Yes	High	0 CT
81	80	1	Wax Palm	<i>Trachycarpus fortunei</i>	8-10	TCM	12-16	10-12	Yes	High	0 CT
82	81	1	Wax Palm	<i>Trachycarpus fortunei</i>	8-10	TCM	12-16	10-12	Yes	High	0 CT
83	82	1	Wax Palm	<i>Trachycarpus fortunei</i>	8-10	TCM	12-16	10-12	Yes	High	0 CT
84	83	1	Wax Palm	<i>Trachycarpus fortunei</i>	8-10	TCM	12-16	10-12	Yes	High	0 CT
85	84	1	Wax Palm	<i>Trachycarpus fortunei</i>	8-10	TCM	12-16	10-12	Yes	High	0 CT
86	85	1	Wax Palm	<i>Trachycarpus fortunei</i>	8-10	TCM	12-16	10-12	Yes	High	0 CT
87	86	1	Wax Palm	<i>Trachycarpus fortunei</i>	8-10	TCM	12-16	10-12	Yes	High	0 CT
88	87	1	Wax Palm	<i>Trachycarpus fortunei</i>	8-10	TCM	12-16	10-12	Yes	High	0 CT
89	88	1	Wax Palm	<i>Trachycarpus fortunei</i>	8-10	TCM	12-16	10-12	Yes	High	0 CT
90	89	1	Wax Palm	<i>Trachycarpus fortunei</i>	8-10	TCM	12-16	10-12	Yes	High	0 CT
91	90	1	Wax Palm	<i>Trachycarpus fortunei</i>	8-10	TCM	12-16	10-12	Yes	High	0 CT
92	91	1	Wax Palm	<i>Trachycarpus fortunei</i>	8-10	TCM	12-16	10-12	Yes	High	0 CT
93	92	1	Wax Palm	<i>Trachycarpus fortunei</i>	8-10	TCM	12-16	10-12	Yes	High	0 CT
94	93	1	Wax Palm	<i>Trachycarpus fortunei</i>	8-10	TCM	12-16	10-12	Yes	High	0 CT
95	94	1	Wax Palm	<i>Trachycarpus fortunei</i>	8-10	TCM	12-16	10-12	Yes	High	0 CT
96	95	1	Wax Palm	<i>Trachycarpus fortunei</i>	8-10	TCM	12-16	10-12	Yes	High	0 CT
97	96	1	Wax Palm	<i>Trachycarpus fortunei</i>	8-10	TCM	12-16	10-12	Yes	High	0 CT
98	97	1	Wax Palm	<i>Trachycarpus fortunei</i>	8-10	TCM	12-16	10-12	Yes	High	0 CT
99	98	1	Wax Palm	<i>Trachycarpus fortunei</i>	8-10	TCM	12-16	10-12	Yes	High	0 CT
100	99	1	Wax Palm	<i>Trachycarpus fortunei</i>	8-10	TCM	12-16	10-12	Yes	High	0 CT

ALL TREES SHALL BE SINGLE LEADER FLORIDA NUMBER 1, FIELD GROWN/BALLED & BURLAPPED (FGBB), CONTAINER GROWN TREES ARE NOT ACCEPTABLE & WILL BE IMMEDIATELY REJECTED UPON INSPECTION. ALL PLANT MATERIALS SHALL MEET THE MINIMUM SPECIFICATIONS LISTED IN THE SCHEDULE ABOVE; FAILURE TO MEET SPECIFICATIONS, INCLUDING SPECIES LISTED, SHALL BE THE CONTRACTOR'S FULL RESPONSIBILITY - NO EXCEPTIONS. OPTIONS FOR ALTERNATE SPECIES BASED ON LACK OF STATEWIDE AVAILABILITY SHALL BE FURNISHED TO LANDSCAPE ARCHITECT OF RECORD A MINIMUM OF 30 DAYS BEFORE COMMENCEMENT OF CONSTRUCTION; LACK OF AVAILABILITY WILL BE VERIFIED USING THE LATEST INDUSTRY ACCEPTED PUBLICATION LISTINGS PLANT SPECIES, SIZES, & QUANTITIES SHALL, AT A MINIMUM, CONFORM TO THOSE INDICATED ON THE DRAWINGS, IN THE AREAS SPECIFIED ON THE DRAWINGS.

SEE SHEET L-2.1 FOR CODES & DETAILS, & SHEET L-2.2 FOR GENERAL LANDSCAPE NOTES & SPECIFICATIONS

THE STORMWATER MANAGEMENT AREAS ARE TO BE MAINTAINED WITH PLANTED NATIVE VEGETATION, IN PERPETUITY

DURING LAND ALTERATION AND CONSTRUCTION ACTIVITIES, IT SHALL BE UNLAWFUL TO REMOVE VEGETATION BY GRUBBING OR TO PLACE SOIL DEPOSITS, DEBRIS, SOLVENTS, CONSTRUCTION MATERIAL, MACHINERY OR OTHER EQUIPMENT OF ANY KIND WITHIN THE DRAINAGE OF A TREE TO REMAIN ON THE SITE UNLESS OTHERWISE APPROVED BY COUNTY.

ENCROACHMENT INTO REQUIRED BUFFERYARDS & LANDSCAPED AREAS BY VEHICLES, BOATS, MOBILE HOMES OR TRAILERS SHALL NOT BE PERMITTED, & REQUIRED LANDSCAPED AREAS SHALL NOT BE USED FOR STORAGE OR SALE OF MATERIALS OR PRODUCTS OR THE PARKING OF VEHICLES & EQUIPMENT

ALL LANDSCAPING SHALL BE MAINTAINED FREE FROM DISEASE, PESTS, WEEDS & LITTER. MAINTENANCE SHALL INCLUDE WEEDING, WATERING, FERTILIZING, PRUNING, MOWING, EDGING, MULCHING, OR OTHER MAINTENANCE, AS NEEDED & IN ACCORDANCE WITH ACCEPTABLE HORTICULTURAL PRACTICES. PERPETUAL MAINTENANCE SHALL BE PROVIDED TO PROHIBIT THE REESTABLISHMENT OF HARMFUL EXOTIC SPECIES WITHIN LANDSCAPING & PRESERVATION AREAS.

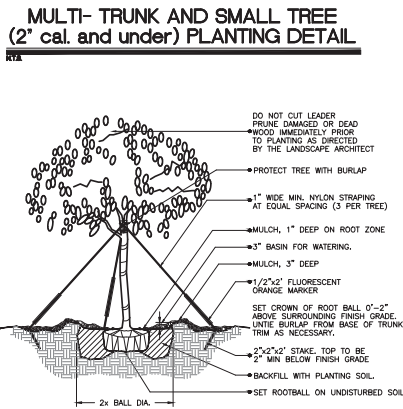
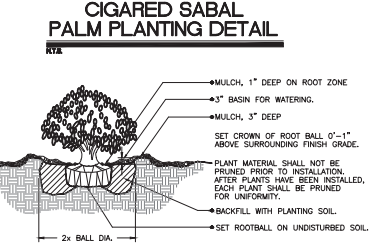
ONLY PROTECTED TREES THAT ARE REMOVED REQUIRE MITIGATION; SEE MITIGATION CALCULATIONS ON THIS SHEET FOR REMOVED PROTECTED TREES; SEE LANDSCAPE PLAN FOR LOCATION OF PROPOSED MITIGATION TREES

IRRIGATION WATER SOURCE / POINT OF CONNECTION SHALL BE AN EXISTING 10 HP CENTRIFUGAL PUMP DRAWING FROM THE LAKE ON THE COMMON INF



LOT 5 DEVELOPABLE AREA: 183,046 sq.ft (100.0%) (4.20 AC) LOT 5 BUILDING: 40,200 sq. ft. (22%) (0.92 AC)  
LOT 5 VUA: 48,527 sq.ft. (27%) (1.11 AC) LOT 5 VUA OVERHANG: 383 sq.ft. (0%) (0.01 AC)  
LOT 5 TOTAL PERVIOUS AREA: 88,913 sq.ft. (47%) (1.97 AC)

SEC. 4.666 TREE PROTECTION: LOT 2							
Quantity	DBH Tree Removed	Min. Replacement Tree Credits	Min. Ht. of Replacement Tree	Caliper	Caliper Replacement (inches)	Tree Replacement	PROVIDED MITIGATION (inches)
7	7-12" Trees	3	8-10'	2"	21	21 TREES	(21)" - 4" TREE CREDITS EQUIV. PER 12 TREES
5	13-18" Trees	4	8-10'	2"	20	12 TREES	
					41	(41) - 2" TREES	

[illegible]

