

MARTIN COUNTY, FLORIDA SUPPLEMENTAL MEMORANDUM

TO: Honorable Members of the Board of County Commissioners **DATE:** August 9, 2022

VIA: Don G. Donaldson, P.E.
County Administrator

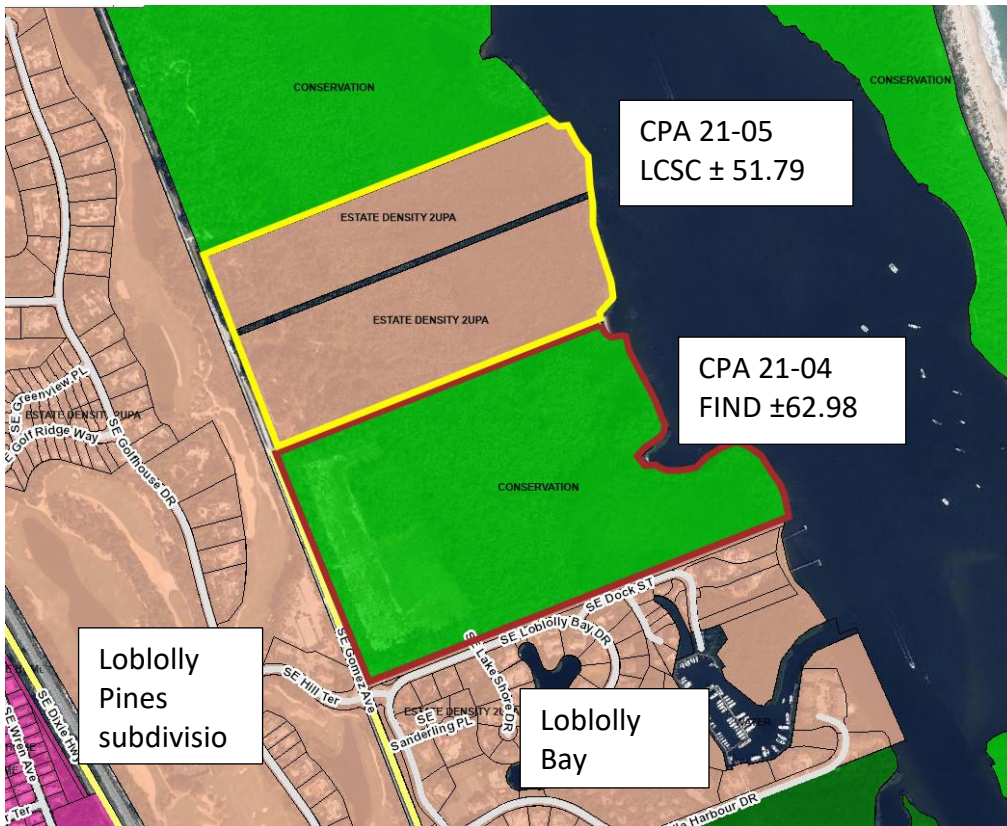
FROM: Paul Schilling, Growth Management Director

REF: 22-0918

**SUBJECT: LEGISLATIVE PUBLIC HEARING TO CONSIDER TRANSMITTAL OF
COMPREHENSIVE PLAN AMENDMENT (CPA) 21-04 FIND FUTURE
LAND USE MAP AMENDMENT**

Public Hearing 1 and Public Hearing 2 are proposed amendments to the Future Land Use Map that can be confusing when reviewed individually. The following descriptions and graphics explain the relationship between CPA 21-04 FIND and CPA 21-05 LCSC.

Depiction of CPA 21-04 Florida Inland Navigation District (FIND) and CPA 21-05 Loblolly Community Service Corporation (LCSC) amendments.



This map shows the locations, respective owners, acreages and future land use designations for the two adjacent parcels in 2022. The respective applicants have requested future land use changes in advance of a proposed ownership change. FIND and LCSC are proposing to swap ownership of approximately 51 acres.

Potential ownership change.

This map shows the land FIND proposes to acquire from LCSC and the land LCSC proposes to acquire from FIND.



Proposed land use designations and ownership.



Reviewed by County Attorney's Office

This document may be reproduced upon request in an alternative format by contacting the County ADA Coordinator (772) 320-3131, the County Administration Office (772) 288-5400, Florida Relay 711, or by completing our accessibility feedback form at www.martin.fl.us/accessibility-feedback.