

# RESILIENT MARTIN

## VULNERABILITY ASSESSMENT UPDATE

KATHY FITZPATRICK, PE  
COASTAL ENGINEER

EMILY DARK  
COASTAL MANAGEMENT COORDINATOR





# PRESENTATION PURPOSE

- Maximize project competitiveness based on new state ranking criteria for resilience grants
- Comply with new state vulnerability assessment criteria



RESILIENT  
MARTIN

# Resilient Florida

Section 380.093, F.S.

Rule 62S-8 F.A.C. (Proposed)





# RESILIENT FLORIDA LEGISLATION 380.093 F.S.

## **5 Major Sections:**

1. “Resilient Florida Grant Program” Planning and Critical Asset Adaptation Grants (s. 380.093 (1)(3), F.S.)
2. Comprehensive Statewide Flood Vulnerability Data Set and Assessment (s. 380.093 (1)(4), F.S.)
3. Statewide Flooding and Sea Level Rise Resilience Plan (s. 380.093 (1)(5), F.S.)
4. Regional Resilience Entities (s. 380.093 (1)(6), F.S.)
5. “Florida Flood Hub” (s. 380.093, F.S.)



# RESILIENT FLORIDA GRANT PROGRAM

1. RESILIENT FLORIDA GRANT PROGRAM PLANNING AND CRITICAL ASSET ADAPTATION GRANTS (S. 380.093(1)(3), F.S.)



## Project Type:

1. Peril of Flood Compliance
2. Vulnerability Assessments
3. Adaptation/Resilience Plans
- ✓ 4. Projects to Adapt Critical Assets



JULY 1- SEPT. 1  
GRANT APPLICATION WINDOW



RESILIENT MARTIN

# STATE CRITERIA FOR VULNERABILITY ASSESSMENTS

Adoption of Section 380.093, F.S.

## Updated standards for local vulnerability assessments

New elements such as: Analysis of **compound flooding** (storm surge + SLR), **extreme precipitation**, addition of NOAA's Intermediate Low SLR condition into impact models, and identification of **critical assets** (including shorelines and habitat) .

*“Local governments are eligible to apply for implementation project funding after conducting a vulnerability assessment, evaluation, report, or other similar document that demonstrates a risk of flooding or risks due to sea level rise to a critical asset or the project area. **Beginning in 2024, a Vulnerability Assessment meeting the requirements of section 380.093, F.S. will be a requirement to receive funding.**” Florida Department of Environmental Protection*





# DRAFT RULE 62S-8, F.A.C. (380.093, F.S.)

Establishing the criteria for grant review and ranking (still in draft form):

- a. Section 380.093, F.S., in several places, states that vulnerability assessments must include **critical assets** owned and maintained by the local government.
- b. Points are also assessed within the ranking criteria for projects based upon:
  1. How well a project **addresses risk**
  2. Projects that reduce risk in areas with **higher numbers of critical assets and serve more critical assets**
  3. How well projects reduce **upland damage**, include **nature-based features**, have **match**, are ready to proceed (permits), are **cost effective**, are **innovative**, and if community is financially constrained

- Up to 36 points of the ranking criteria are directly related to how well the vulnerability assessment identifies risks to critical assets and how many critical assets are served by a proposed project
- Up to 14 points are related to match/previous state funding and the availability of cost share



# PROPOSED UPDATE: VULNERABILITY ASSESSMENT APPENDIX

The following are components for a Vulnerability Assessment Appendix relative to the projects, as required in Section 380.093 (3)(d), F.S. :

## Task overview:

1. Additional data considerations related to capital projects
2. Sea Level Rise Impact Projection Data Processing
  - a. Surge
  - b. Rainfall
  - c. High tide
  - d. NOAA Intermediate High
  - e. NOAA Intermediate Low
    - i. 2040
    - ii. 2070
    - iii. 2100
3. Report & Map Output
  - a. Narrative relating capital projects to vulnerability assessments considering new grant evaluation standards
  - b. Rationale and justifications for statutory criteria met or scope
4. Preparing minimum required metadata based on GIS standards





# MARTIN COUNTY PROJECTS

Martin Count Resilience Priority Projects				
	Added to List In 2022	On the 2021 List	Awarded/Funded	Current Priority for Funding
Project				
Old Palm City North Neighborhood Restoration & Dyer Point Road Elevation	X			X
SW Mockingbird Lane		X		X
Cypress Creek Restoration Project	X			X
Park Drive/Seaward Ave Sewer Connect & Road Raising	X			X
Vulnerability Assessment Compliance		X	X	
Economic Analysis		X		
Nature Based Solutions for Stormwater Outflow		X		
Palm City Bessey Creek Retrofit Project	X			
Cove Point Phase II Improvements	X			
Old Palm City Back Flow Preventer Program	X		X	X
Golden Gate STA North Outfall Flood Mitigation		X	X	





# MARTIN COUNTY PROJECTS

## Martin Count Resilience Priority Projects

	Added to List In 2022	On the 2021 List	Awarded/Funded	Current Priority for Funding
Project				
Jensen Beach Causeway Park West	X			
Kitching Creek Eastern Flow Way	X			
SE Merritt Way Flood Mitigation	X			
Twin Rivers Park		X	X	
Cove Road		X		
Indian RiverSide Park Natural Shoreline	X		X	
Stuart Causeway Islands		X		
Halpatioke Park		X		
Porter Park		X		
FOS Impoundment		X		
Peck Lake Park		X		
Spoil Islands		X		
Chastain Park Parking lot & Roadway		X		
Sandsprit Park		X		
Manatee Park		X		
Jimmy Graham		X		





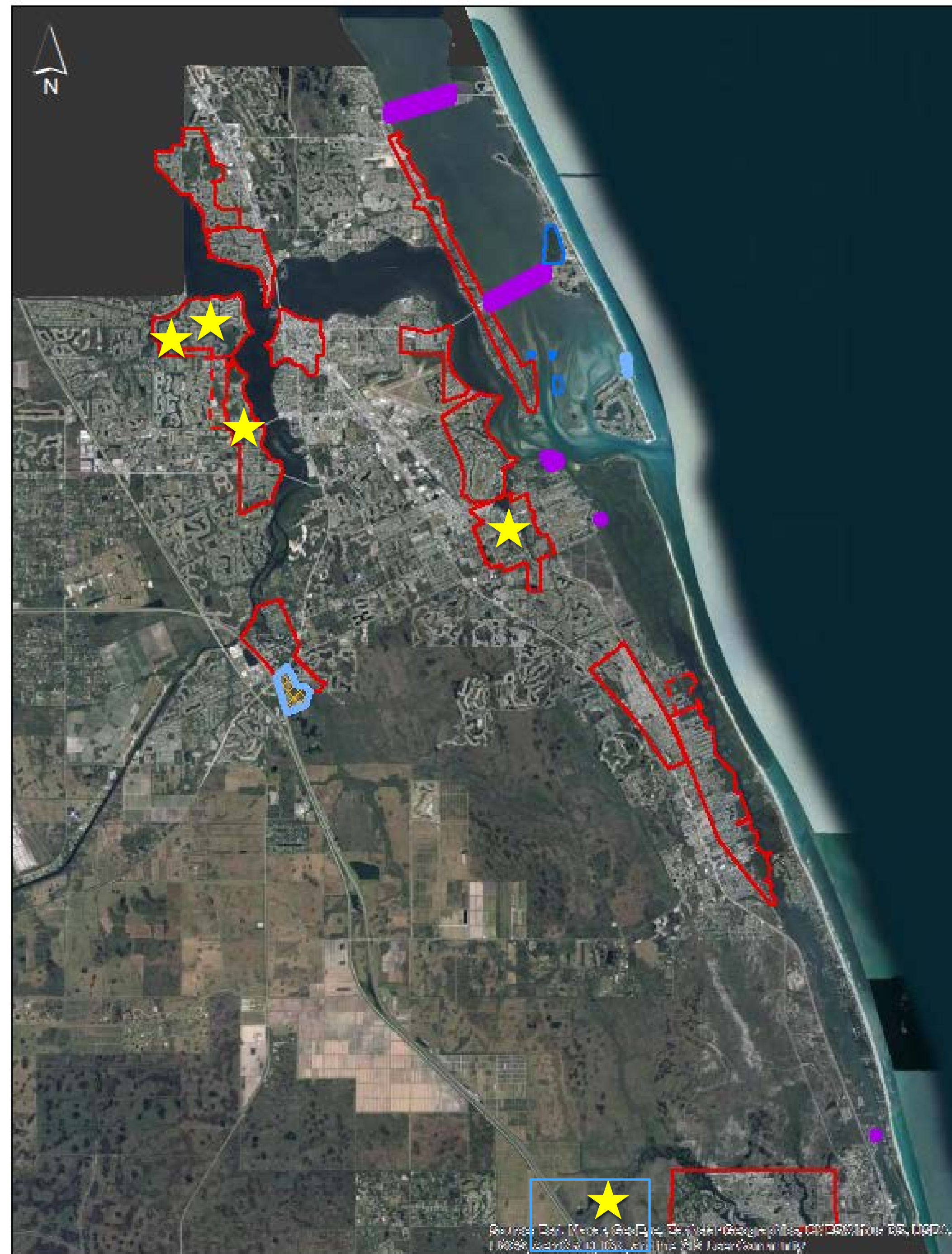
# PRIORITY AREA MAP

## 2021 Updated Sea Level Rise Priority Areas

-  2021\_Priority\_Area\_Combo
-  2021\_Priority Area\_Flooding
-  2021\_Priority\_area\_Ecological
-  2021\_Priority\_Area\_Erosion
-  Priority Action Areas
-  Project locations

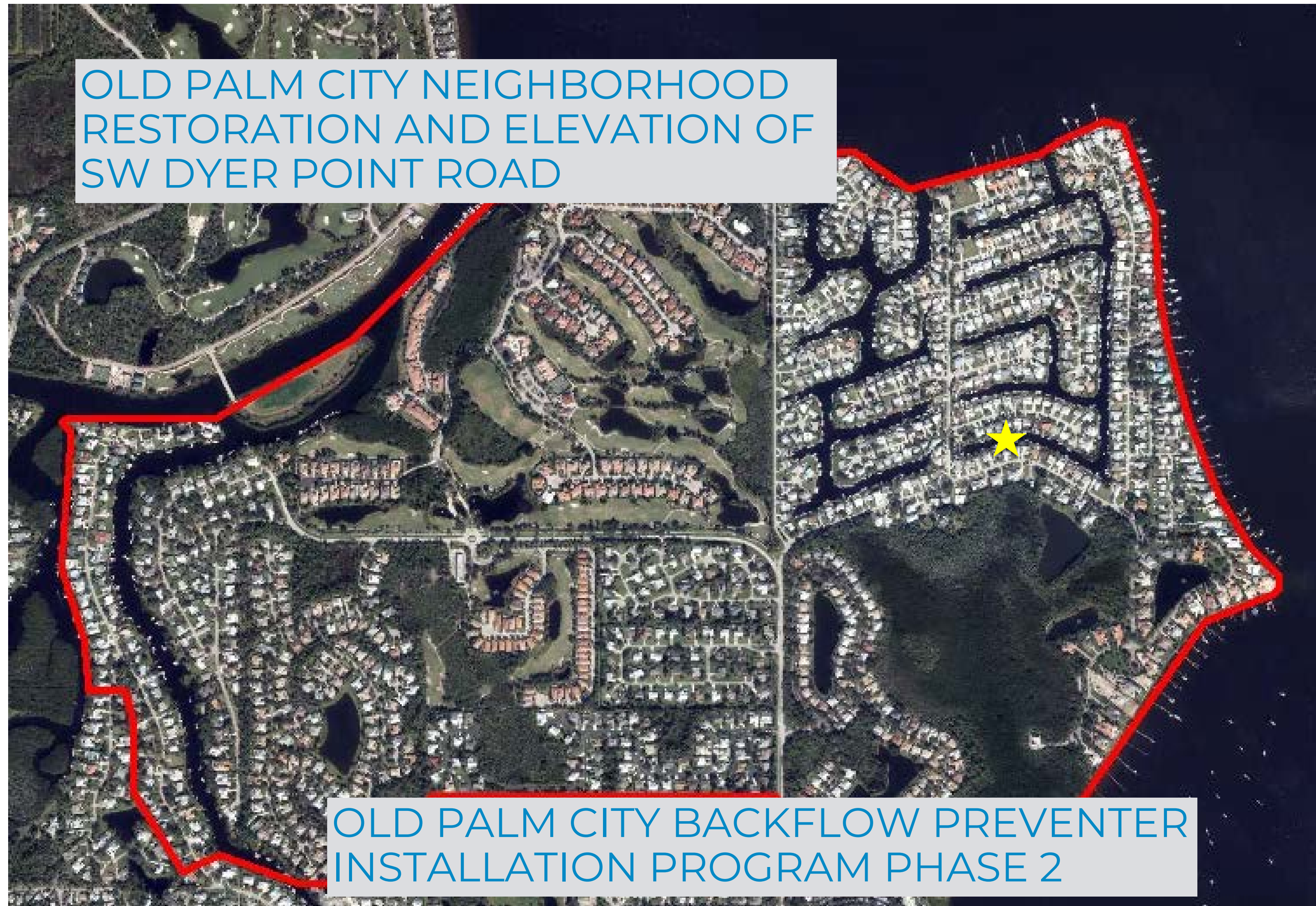


RESILIENT MARTIN



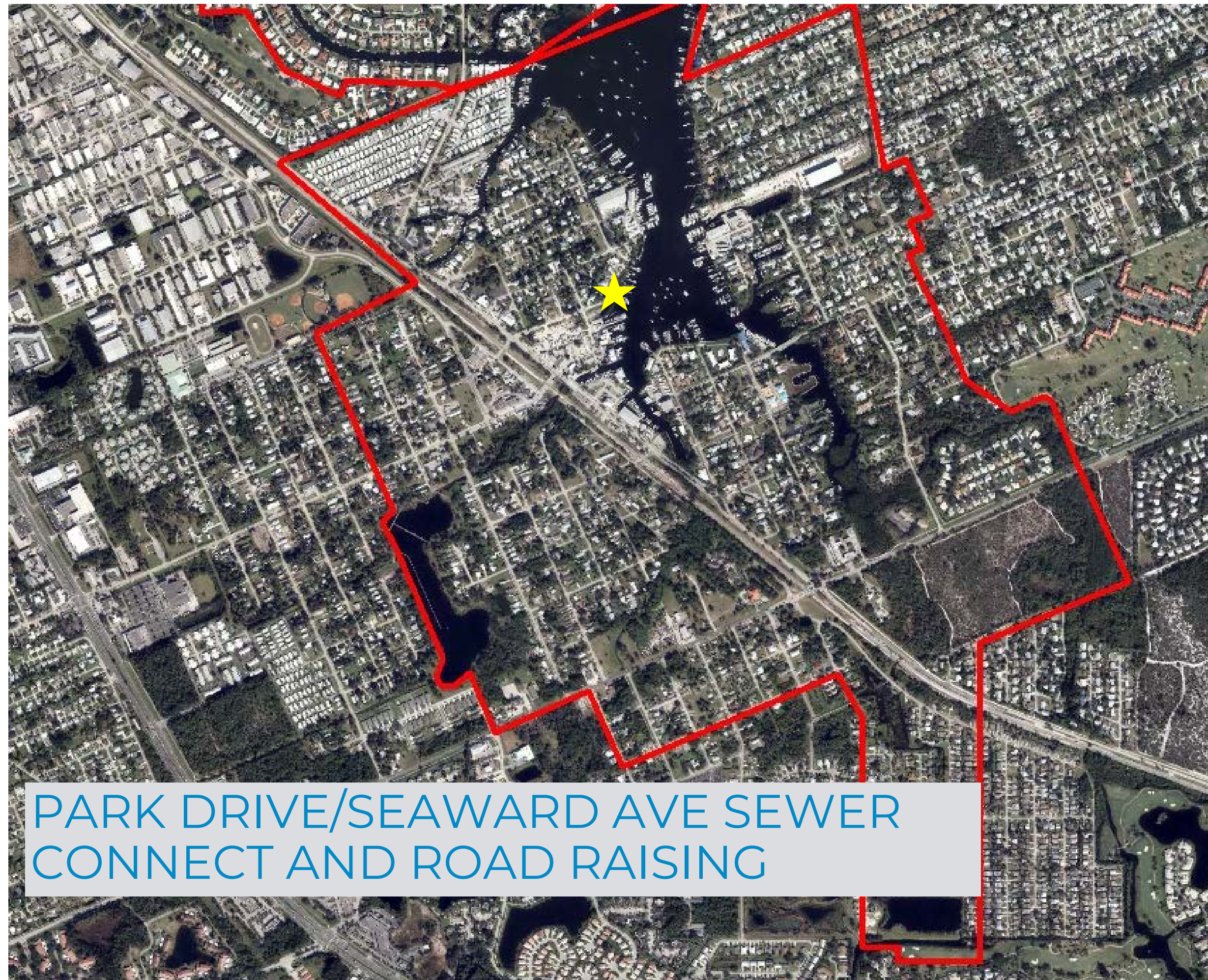


# PROPOSED PROJECTS





# PROPOSED PROJECTS



PARK DRIVE/SEAWARD AVE SEWER  
CONNECT AND ROAD RAISING



RESILIENT MARTIN

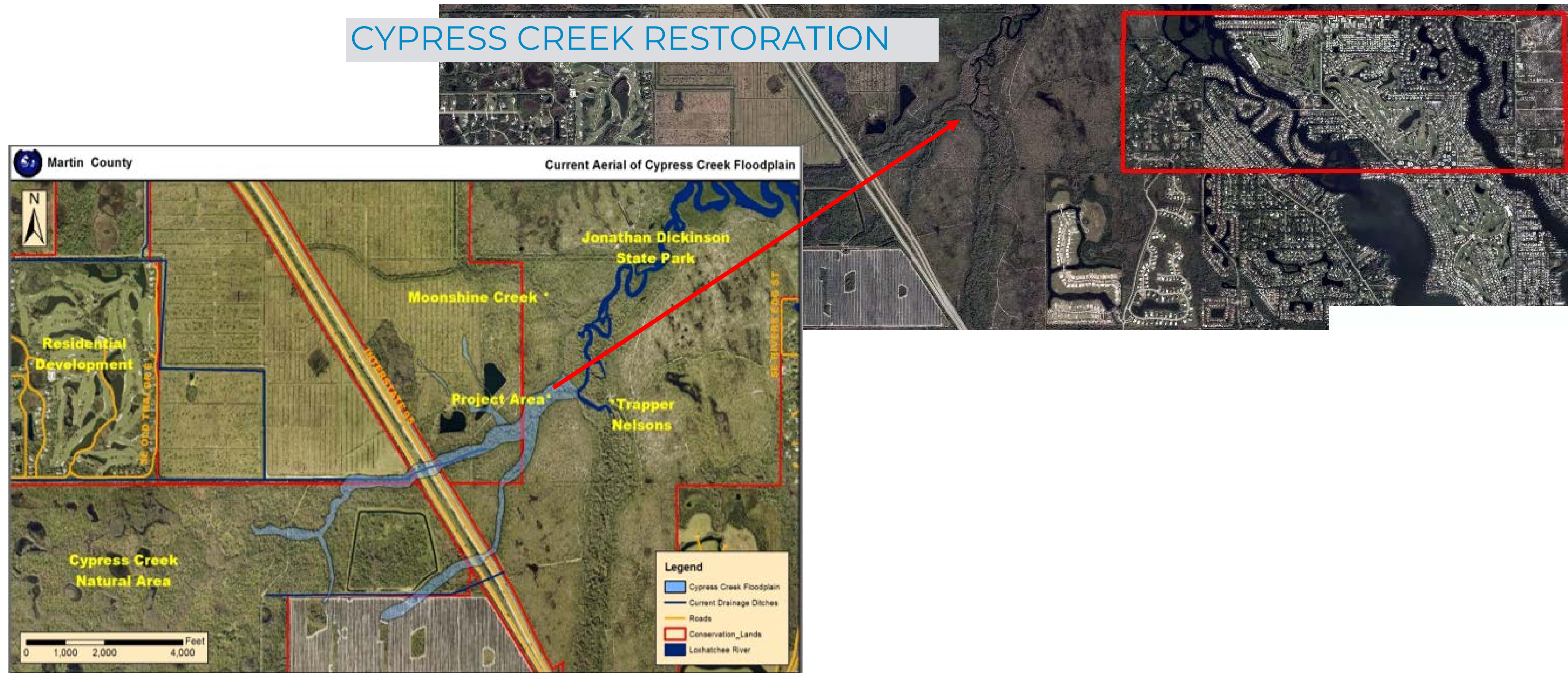


SW MOCKINGBIRD LANE



# PROPOSED PROJECTS

## CYPRESS CREEK RESTORATION

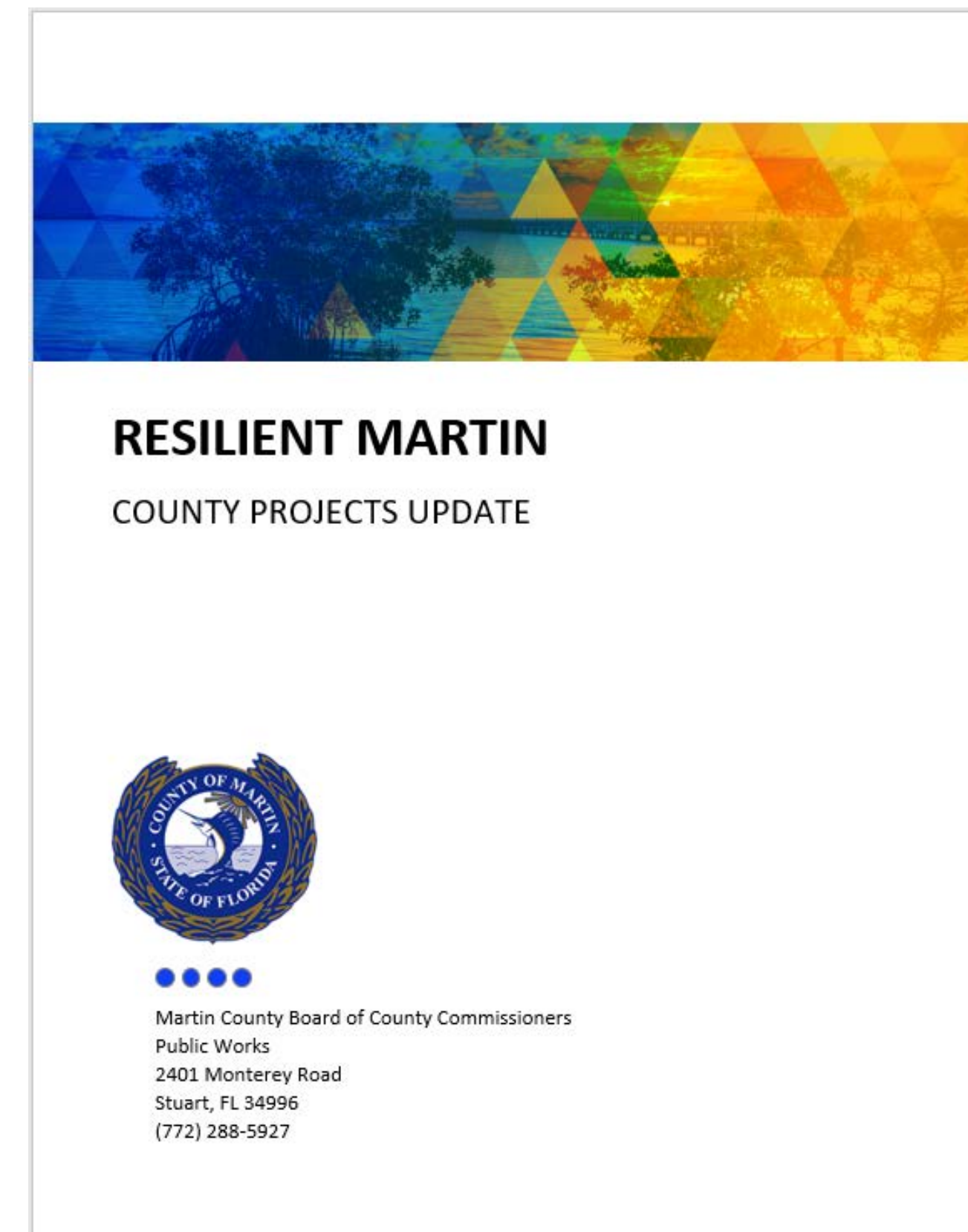


RESILIENT MARTIN



# RESILIENT MARTIN UPDATE

- Provides overview of current and on-going Martin County resilience projects
- Highlights a variety of Martin County efforts that contribute to building community resilience
  - Stormwater (green infrastructure)
  - Land Acquisition
  - Living Shorelines
  - Wetland Restoration
- By the Numbers
- Energy update
- Other Florida resilience efforts



8 GRANTS AWARDED TOTALLING \$3,556,458

4,000 ACRES OF WETLAND DOMINATED HABITATS  
RESTORED AT CULPEPPER RANCH



RESILIENT MARTIN



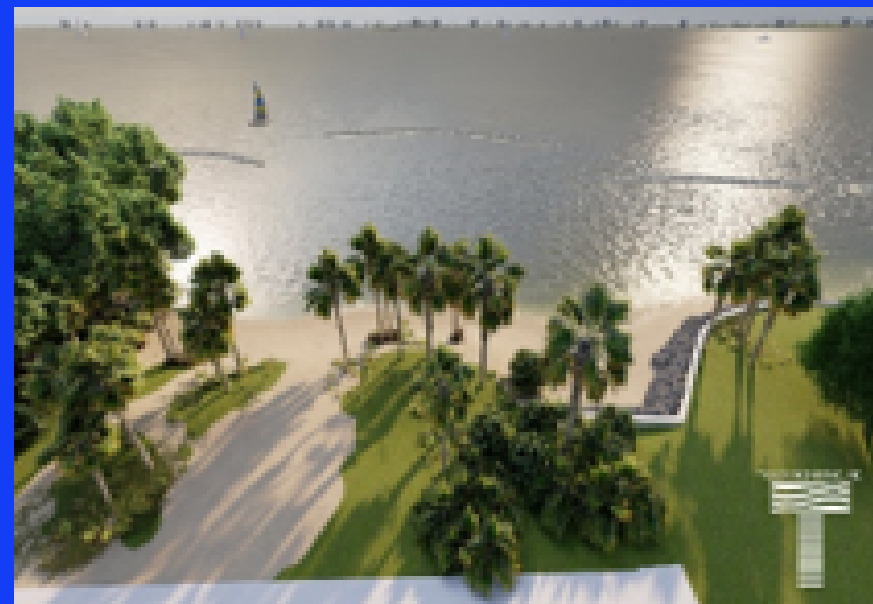
# COUNTY PROJECTS

## Parks and Recreation/Public Works: Waterfront Parks Assessment



Parks and Recreation and Public Works teamed up with Taylor Engineering, Inc. to develop a catalog documenting the current conditions and capital improvement needs at non-beachfront waterfront parks exposed to rising sea levels and increased storm activity. The County's intent is to use this catalog to support budget planning, project prioritization, and to develop and approach to maintain or improve existing waterfront structures and shorelines.

## Public Works: Indian Riverside Park Hybrid Living Shoreline Project



Phase 1 was accomplished with completion of preliminary environmental assessments and project design. This project includes the construction of offshore limestone breakwaters, enhancement of the existing living shoreline and will provide robust protection to the Tuckahoe Mansion, historic shell midden and existing nearshore habitats including oysters and mangroves.

[WWW.MARTIN.FL.US/RESILIENCE/PROJECTS](http://WWW.MARTIN.FL.US/RESILIENCE/PROJECTS)



RESILIENT MARTIN

## General Services: Energy Savings & Efficiency



Martin County has completed several major energy projects and continues to employ energy saving efforts county wide. An example is the replacement of A/C units throughout the county buildings. This project has significantly contributed to energy savings and avoided carbon emissions. The 1,114 tons of A/C units replaced since 2014 has resulted in 21, 887, 554 kWh avoided of electricity costs and 71, 164 metric tons of avoided CO<sub>2</sub> emissions equivalent.