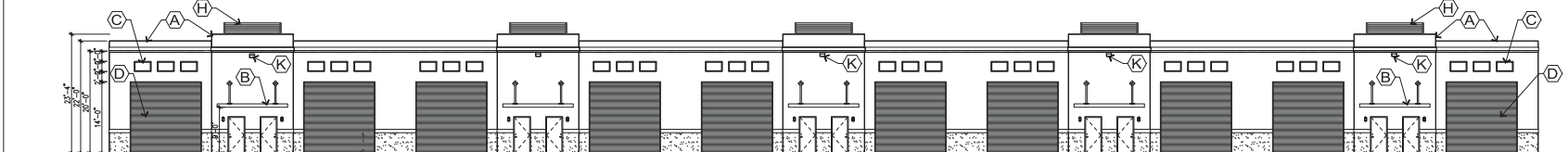
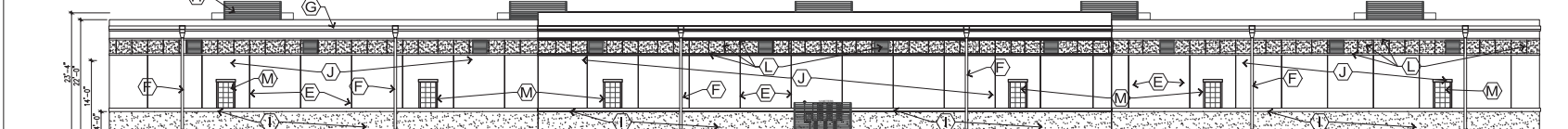


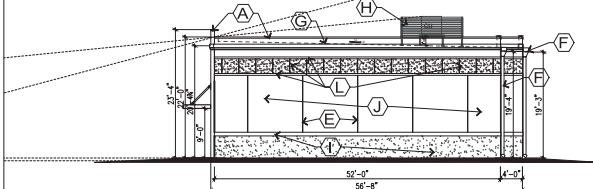
Hobe Sound AUTO VAULT PLAN Bldg#1
SCALE: 3/32"=1'-0"
BUILDING 10 UNITS: (83.67' x 52' x 2 = 8,728 sq.ft.) + (112.67' x 56' = 6,336 sq.ft.) = 15,064 SQ.FT.



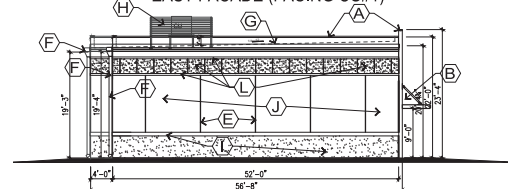
WEST ELEVATION



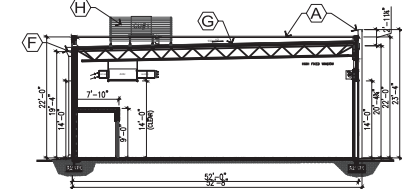
EAST FACADE (FACING US#1)



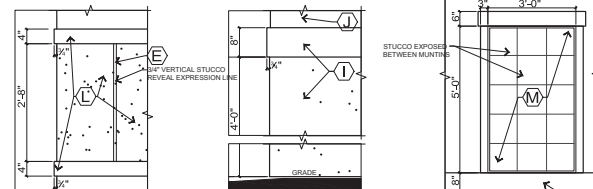
SOUTH ELEVATION



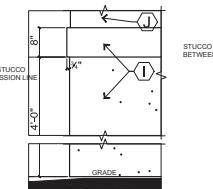
NORTH ELEVATION



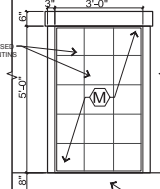
CORNER DETAIL



UPPER TRIM BANDS DETAIL
SCALE: 3/4"= 1'-0"



EXTERIOR WAINSCOT DETAIL
SCALE: 3/4"= 1'-0"

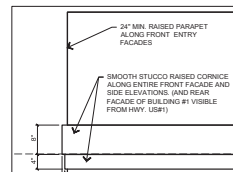


FAUX WINDOW DETAIL
SCALE: 1/2"= 1'-0"

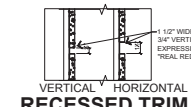
ARCHITECTURAL ELEMENTS
SCALE: 3/32"=1'-0"

(A) RAISED CORNICE ALONG ENTIRE FRONT FACADES AND SIDE ELEVATIONS. (COLOR: SW 6189 "SEDGATE GRAY")	(K) SMOOTH STUCCO WALLS (SW 6171 "CHATROOM") AROUND ALL SIDES.
(B) ANODIZED ALUMINUM CANNOPES AND BRACKETS OVER ENTRY DOORS (MILL FINISH)	(L) ORNAMENTAL LED WALLPACK LIGHT FIXTURES w/MFR. ANODIZED MILL FINISH, MOUNT AT 20' ABOVE GRADE.
(C) ORNAMENTAL RECTANGULAR WINDOWS FOR NATURAL LIGHT INTO THE SPACES. (MILL FINISH)	(M) 2" W x 3/4" RAISED HORIZ. SMOOTH STUCCO TRIM BANDS (2) EXPRESSION LINES (SW 6868 "REAL REED") ALONG ENTIRE SIDE ELEVATIONS AND REAR OF BLDG #1 VISIBLE FROM U.S.#1 HIGHWAY. WITH TEXTURED STUCCO BETWEEN BANDS (SW 6172 "HARDWARE") ALONG ENTIRE REAR FACADE & SIDE ELEVATIONS OF BLDG #1 VISIBLE FROM U.S.#1 HIGHWAY.
(D) COILING OVERHEAD DOORS w/MFR. ANODIZED MILL FINISH 1 1/2" WIDE HORIZONTAL & 3/4" VERTICAL STUCCO REVEAL EXPRESSION LINES (SW 6868 "REAL REED") ALONG ENTIRE FACADE, SIDE ELEVATIONS AND ANY SIDE VISIBLE FROM U.S.#1 HIGHWAY.	(N) ORNAMENTAL FAUX FENESTRATIONS w/MFR. SMOOTH STUCCO TRIM FINISH, SIDE BANDS 3/16"x3/4" HEADER ORNAMENTAL FAUX WINDOW INSET RECT. FRAME OF 1"x3/4" VINYL BORDER FRAME w/ 1/2"x1/2" MUNTINS IN A 3x3 GRID PATTERN (COLOR: SW6172 "HARDWARE")
(E) GUTTERS & DOWNSPOUTS w/MFR. ANODIZED MILL FINISH OR ACCENT COLOR.	
(F) FLAT ROOF (14" PER FT.) FULLY ADHERED WHITE PVC VERIFLEX (OR EQ.)	
(G) ROOF TOP EQUIPMENT SCREENED w/MFR. ANODIZED MILL FINISH OR ACCENT COLOR.	
(H) 8" x 24" RAISED HORIZ. SMOOTH STUCCO TRIM BAND #1 TEXTURED STUCCO WAINSCOT (SW 6172 "HARDWARE") ALONG ENTIRE FACADE & SIDE ELEVATIONS.	

NOTE: COLORS FROM SHERWIN WILLIAMS (OR EQ.). ANY CHANGES TO BUILDING #1 ELEVATION DESIGN SHALL BE RE-SUBMITTED TO THE COUNTY.



CORNICED DETAIL
SCALE: 3/4"= 1'-0"



VERTICAL RECESSED TRIM REVEAL DETAILS
SCALE: 1/2"= 1'-0"