

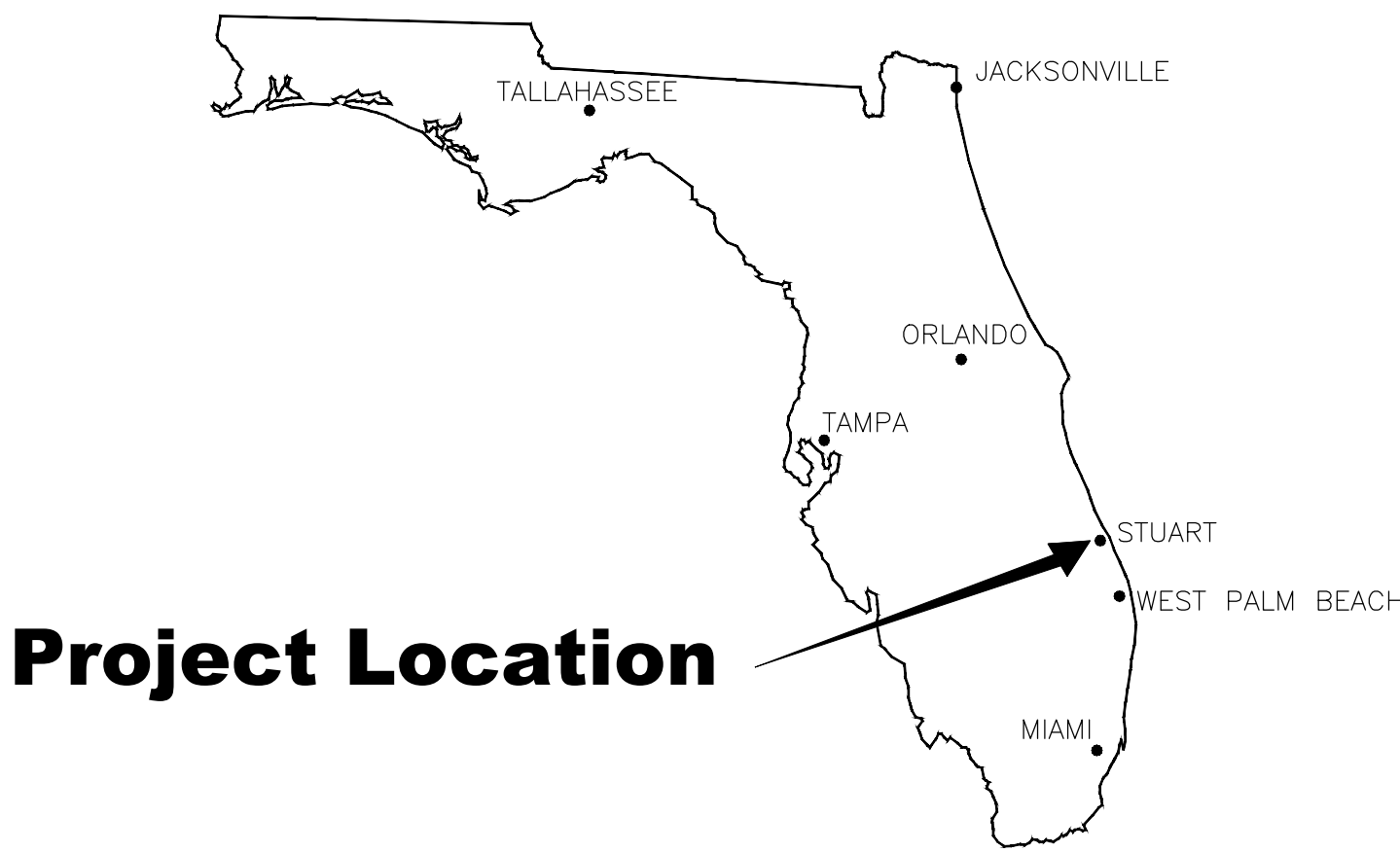


# MANATEE POCKET

## DRAINAGE IMPROVEMENTS

# CONSTRUCTION DRAWINGS

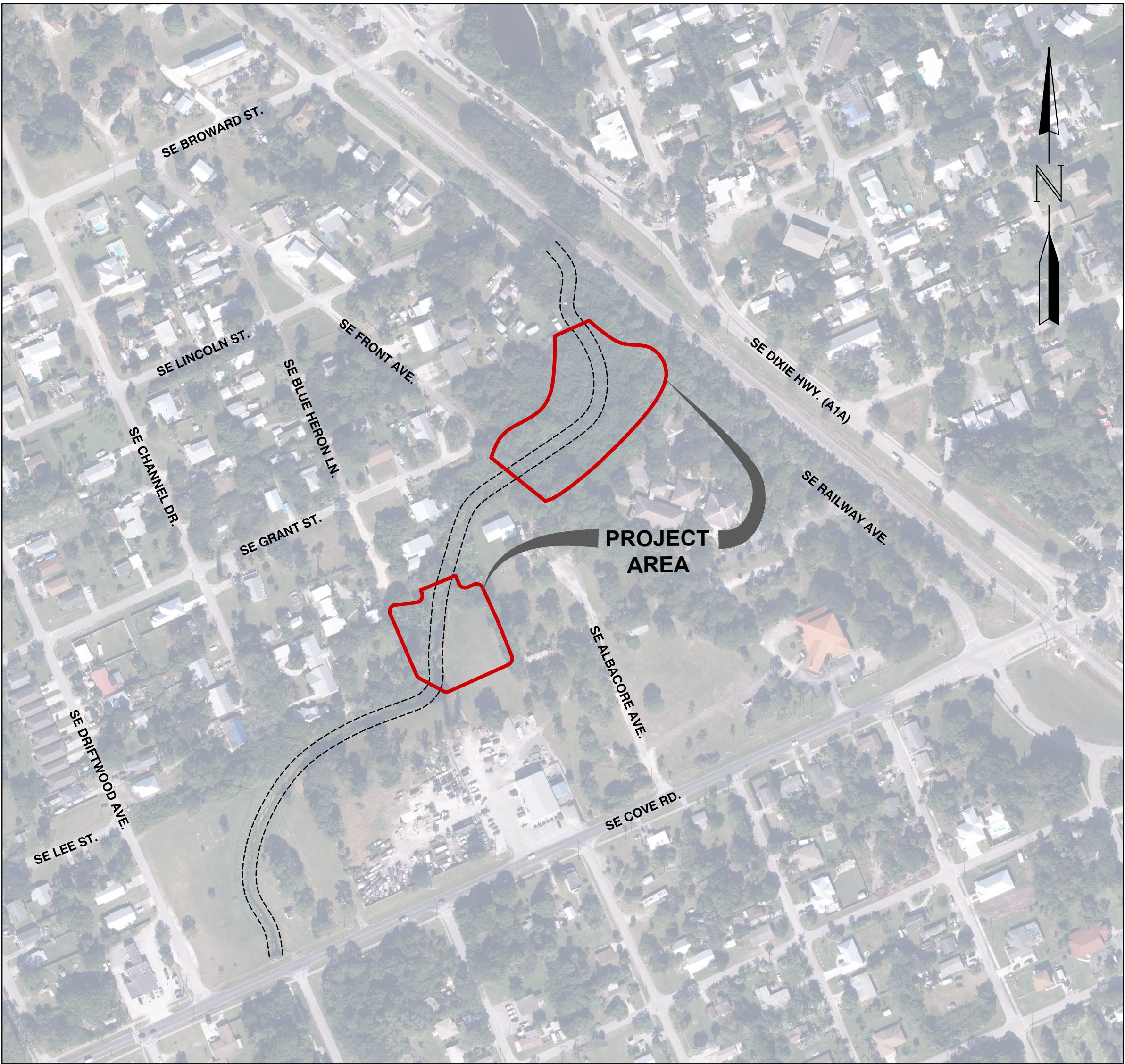
FOR  
MARTIN COUNTY PUBLIC WORKS DEPARTMENT  
MARTIN COUNTY, FLORIDA



Project Location

SECTION 25 TOWNSHIP 38 RANGE 41

Sheet List Table	
Sheet Number	Sheet Title
1	COVER SHEET
2	INDEX SHEET
3	PROJECT LAYOUT
4	EXISTING SITE CONDITIONS (1)
5	EXISTING SITE CONDITIONS (2)
6	EXISTING SITE CONDITIONS (3)
7	SITE IMPROVEMENTS PLAN (1)
8	SITE IMPROVEMENTS PLAN (2)
9	GENERAL NOTES (1)
10	GENERAL NOTES (2)
11	GENERAL NOTES (3)



SITE LOCATION MAP  
NOT TO SCALE

PRELIMINARY PLANS  
NOT FOR CONSTRUCTION

BOARD OF COUNTY COMMISSIONERS

DOUG SMITH	DISTRICT 1
STACEY HETHERINGTON	DISTRICT 2
HAROLD JENKINS	DISTRICT 3
SARAH HEARD	DISTRICT 4
EDWARD CIAMPI	DISTRICT 5

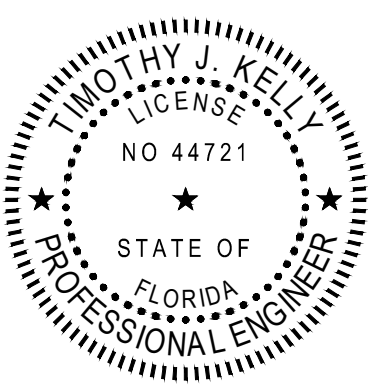
OWNER/APPLICANT:

TARYN KRYZDA - COUNTY ADMINISTRATOR  
JAMES GORTON - PUBLIC WORKS DIRECTOR  
MARTIN COUNTY PUBLIC WORKS DEPARTMENT  
2401 SE MONTEREY ROAD  
STUART, FL 34996

CONSULTANTS

**SURVEYOR:**  
WSP  
ENVIRONMENT & INFRASTRUCTURE, INC  
550 NORTHLAKE BOULEVARD, SUITE 1000  
ALTAMONTE SPRINGS, FL 32701  
(407) 522-7570

**CIVIL ENGINEER:**  
WSP  
ENVIRONMENT & INFRASTRUCTURE, INC  
5015 S Florida Ave, SUITE 301  
LAKELAND, FL 33813  
(863) 667-2345



NOTES:

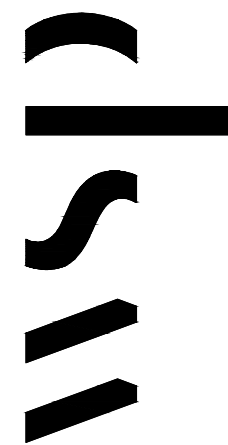
- ALL ELEVATIONS SHOWN ARE REFERENCED TO THE NORTH AMERICAN VERTICAL DATUM OF 1988 (NAVD 88).
- THIS DOCUMENT MAY BE REPRODUCED UPON REQUEST IN AN ALTERNATIVE FORMAT BY CONTACTING THE COUNTY ADA COORDINATOR (772) 320-3131, THE COUNTY ADMINISTRATION OFFICE (772) 288-5400, FLORIDA RELAY 711, OR BY COMPLETING OUR ACCESSIBILITY FEEDBACK FORM AT [WWW.MARTIN.FL.US/ACCESSIBILITY-FEEDBACK](http://WWW.MARTIN.FL.US/ACCESSIBILITY-FEEDBACK).
- DATE OF LATEST FIELD SURVEY - JULY 13, 2022.  
SURVEY PERFORMED UNDER DIRECTION OF MAX RAMOS, FLORIDA PSM NO. 6548



THIS DOCUMENT, TOGETHER WITH THE CONCEPTS AND DESIGNS PRESENTED HEREIN, AS AN INSTRUMENT OF SERVICE, IS INTENDED ONLY FOR THE SPECIFIC PURPOSE AND CLIENT FOR WHICH IT WAS PREPARED. REUSE OF AND IMPROPER RELIANCE ON THIS DOCUMENT WITHOUT WRITTEN AUTHORIZATION AND ADAPTATION BY MARTIN COUNTY COUNTY PUBLIC WORKS, SHALL BE WITHOUT LIABILITY TO MARTIN COUNTY PUBLIC WORKS.

NOTE:

- ALL ELEVATIONS SHOWN ARE REFERENCED TO THE NORTH AMERICAN VERTICAL DATUM OF 1988 (NAVD 88).



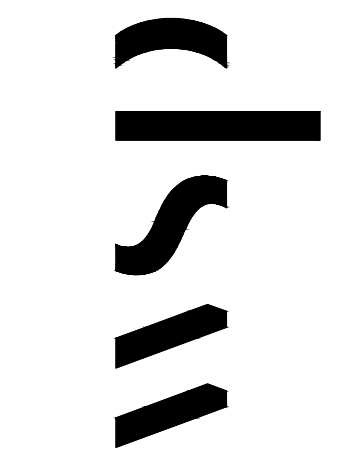
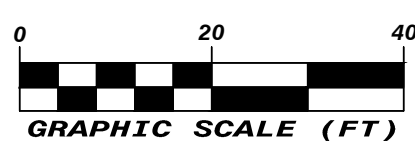
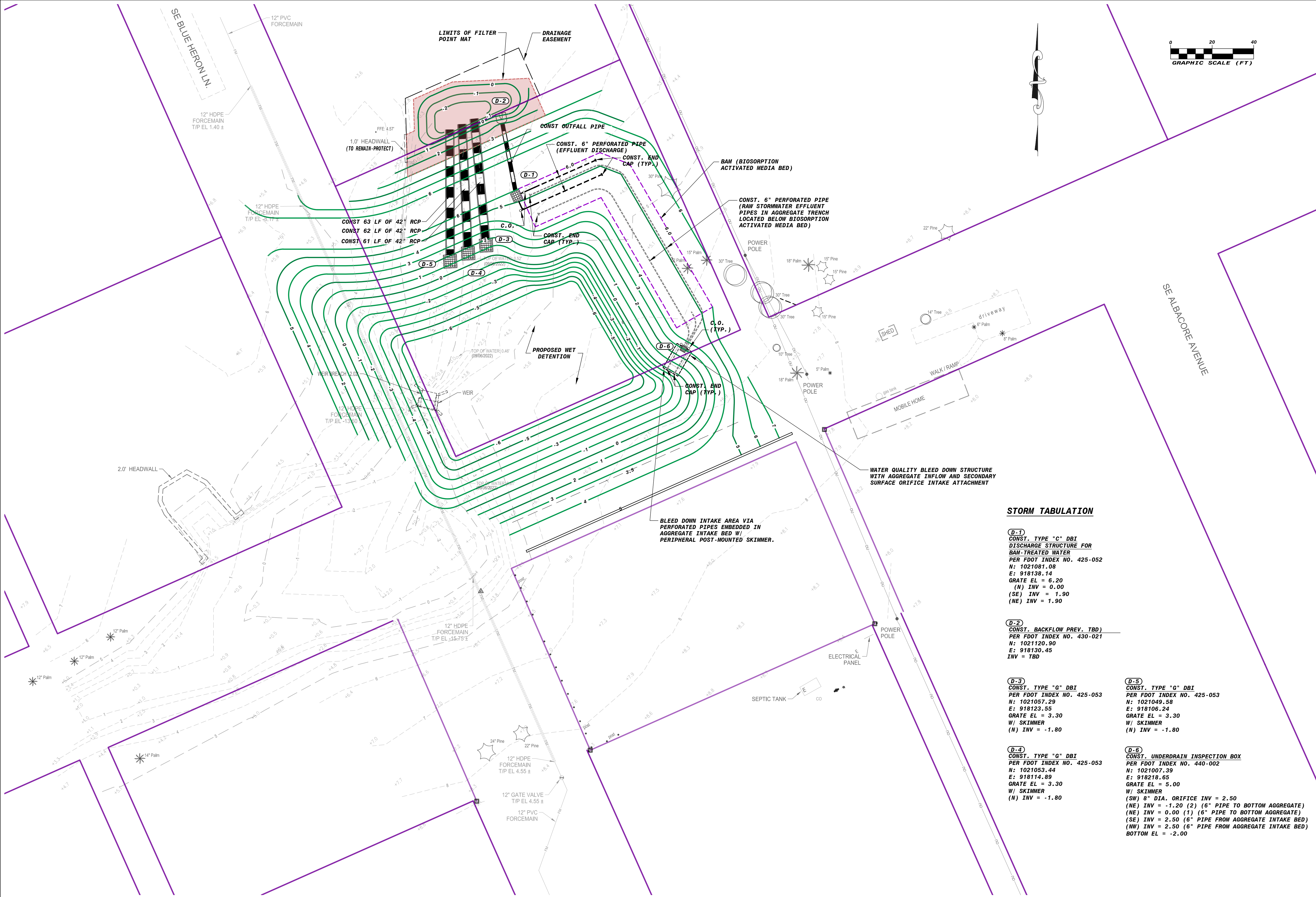
ENVIRONMENT & INFRASTRUCTURE, INC.  
5015 S Florida Avenue, Suite 301  
Lakeland, FL 33813  
[www.wsp.com](http://www.wsp.com)

MANATEE POCKET  
DRAINAGE IMPROVEMENTS  
COVER SHEET

THIS ITEM HAS BEEN ELECTRONICALLY SIGNED AND SEALED BY: TIMOTHY J. KELLY, FLORIDA PROFESSIONAL ENGINEER # 44721 ON FEBRUARY 07, 2023. PRINTED COPIES OF THIS DOCUMENT ARE NOT CONSIDERED SIGNED AND SEALED AND THE SIGNATURE MUST BE VERIFIED ON ANY ELECTRONIC COPIES.

PLAN STATUS		
DATE	DESCRIPTION	
DESIGN	DRAWN	CHKD
TJK	ALP	---
SCALE: ---		
JOB No. 600710.7		
DATE: 2/7/2023		
FILE NAME:		
SHEET		





ENVIRONMENT & INFRASTRUCTURE, INC.  
5015 S Florida Avenue, Suite 301  
Lakeland, FL 33813  
www.wsp.com

MANATEE POCKET  
DRAINAGE IMPROVEMENTS  
SITE IMPROVEMENTS PLAN (1)

THIS ITEM HAS BEEN ELECTRONICALLY  
SIGNED AND SEALED BY: TIMOTHY J.  
KELLY, FLORIDA PROFESSIONAL  
ENGINEER #44721 ON FEBRUARY 07, 2023.  
PRINTED COPIES OF THIS DOCUMENT  
ARE NOT CONSIDERED SIGNED AND  
SEALED AND THE SIGNATURE MUST BE  
VERIFIED ON ANY ELECTRONIC COPIES.

PLAN STATUS		
DATE	DESCRIPTION	
DESIGN	DRAWN	CHKD
TJK	ALP	---
SCALE: 1" = 20'		
JOB No. 600710.7		
DATE: 2/7/2023		
FILE NAME:		
SHEET 7		



THIS DOCUMENT, TOGETHER WITH THE CONCEPTS AND DESIGNS PRESENTED HEREIN, AS AN INSTRUMENT OF SERVICE, IS INTENDED ONLY FOR THE SPECIFIC PURPOSE AND CLIENT FOR WHICH IT WAS PREPARED. REUSE OF AND IMPROPER RELIANCE ON THIS DOCUMENT WITHOUT WRITTEN AUTHORIZATION AND ADAPTATION BY MARTIN COUNTY COUNTY PUBLIC WORKS, SHALL BE WITHOUT LIABILITY TO MARTIN COUNTY PUBLIC WORKS.

NOTE:  
1. ALL ELEVATIONS SHOWN ARE REFERENCED TO THE NORTH AMERICAN VERTICAL DATUM OF 1988 (NAVD 88).



