



Drawing Name: C:\Users\GEP\Shared Folders\GEP Projects\2018\18-002 JV Reed and Zeus Park\Design\JV Reed Plans\Sheet\JV Reed Plans\Sheet.dwg Date: 8/10/2018 9:50 AM - GEP

DATE	BY	REVISIONS

Date: 8/2/2018  
Scale: 1"=40'  
Design By: BF  
Drawn By: JLS  
Check By: LDG



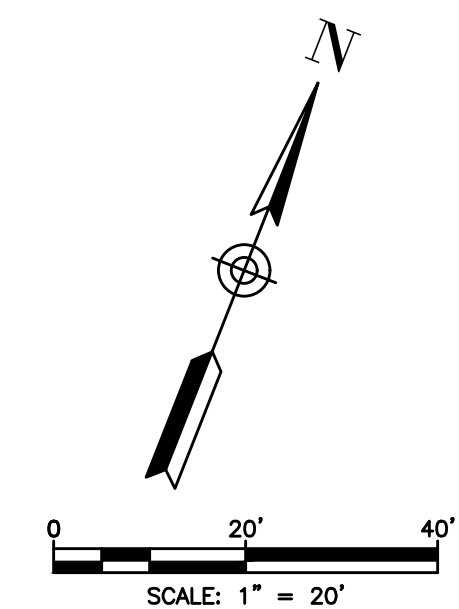
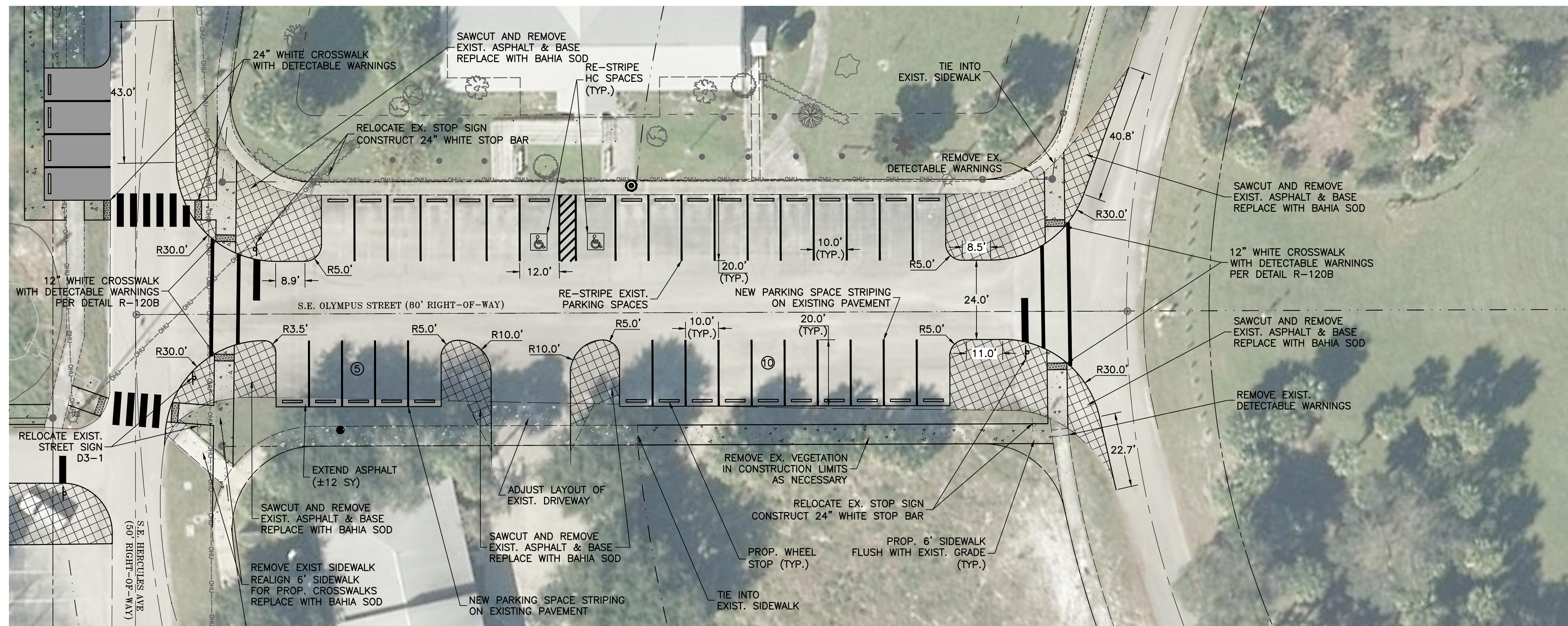
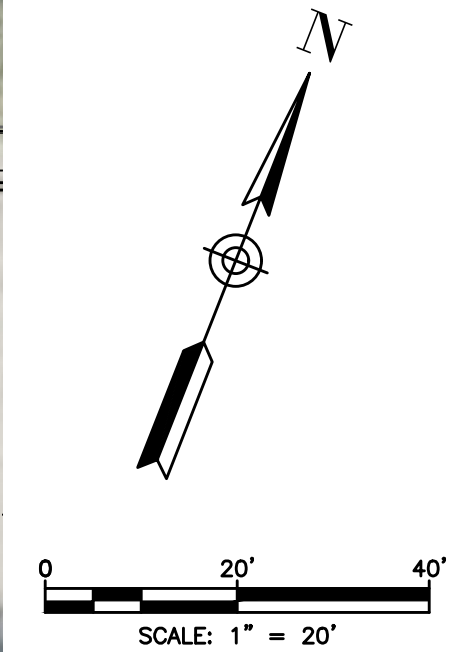
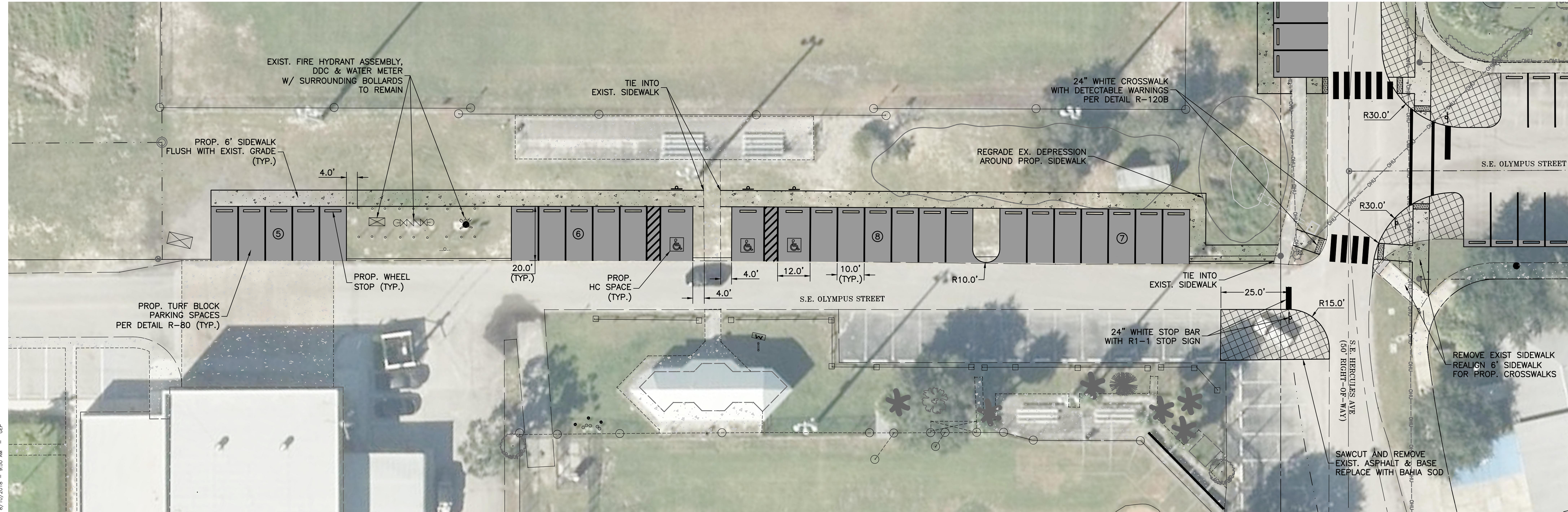
MARTIN COUNTY  
PARKS AND RECREATION DEPARTMENT  
2401 SE MONTEREY ROAD  
STUART, FLORIDA 34996  
PHONE: (772) 288-5400  
www.martin.fl.us

JV REED & ZEUS PARK IMPROVEMENTS  
MARTIN COUNTY, FL  
OVERALL PLAN SHEET

GIANGRANDE ENGINEERING AND PLANNING  
2081 SE OCEAN BLVD., SUITE 1A  
STUART, FLORIDA 34996  
PH. (772) 888-9076  
www.gep-llc.com

LEO GIANGRANDE, PE  
License No: 66387





#### LEGEND

- EXIST. EDGE OF PAVEMENT
- PROP. EDGE OF PAVEMENT
- PROP. STRIPING
- ⊙ EXIST. SIGN
- PROP. WHEEL STOP
- # PROP. NUMBER OF PARKING SPACES
- ▨ PROP. IMPERVIOUS AREA REMOVAL
- ▨ PROP. CONCRETE SIDEWALK
- PROP. TURF BLOCK
- ▨ EXIST. CONCRETE SIDEWALK

DATE	BY	REVISIONS

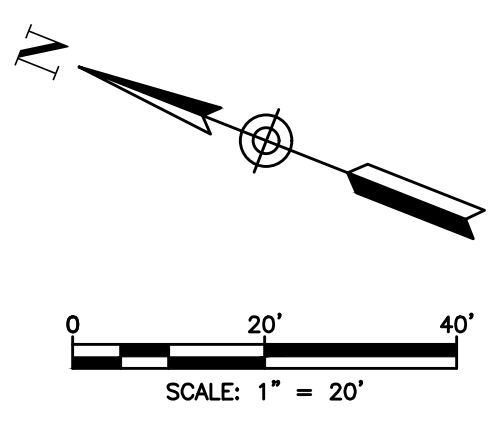
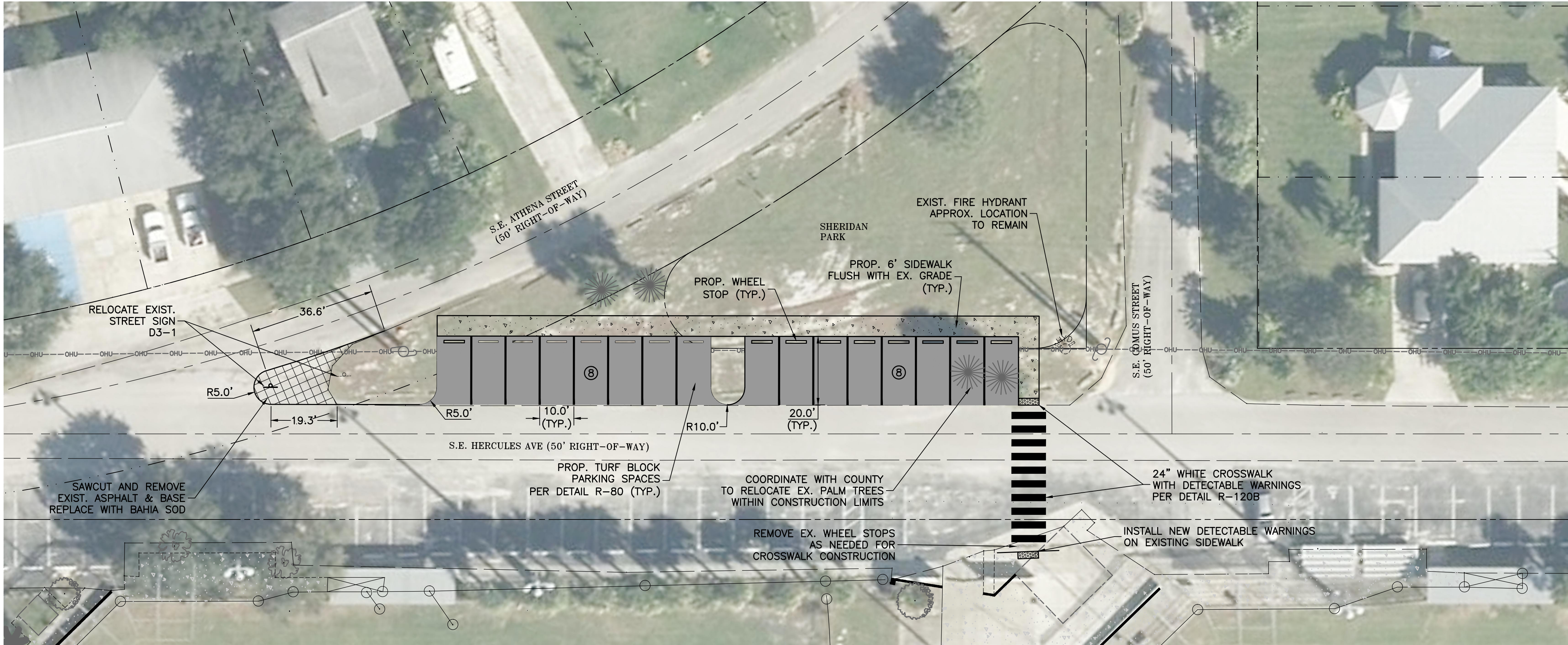
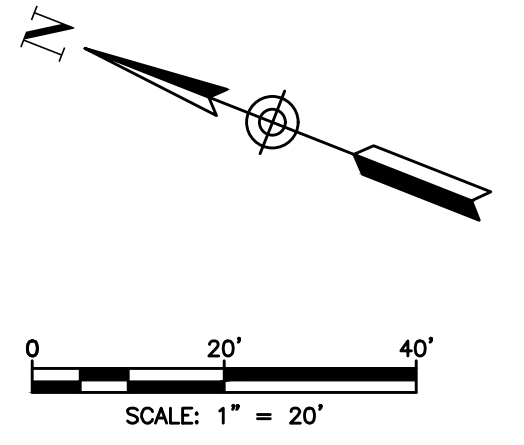
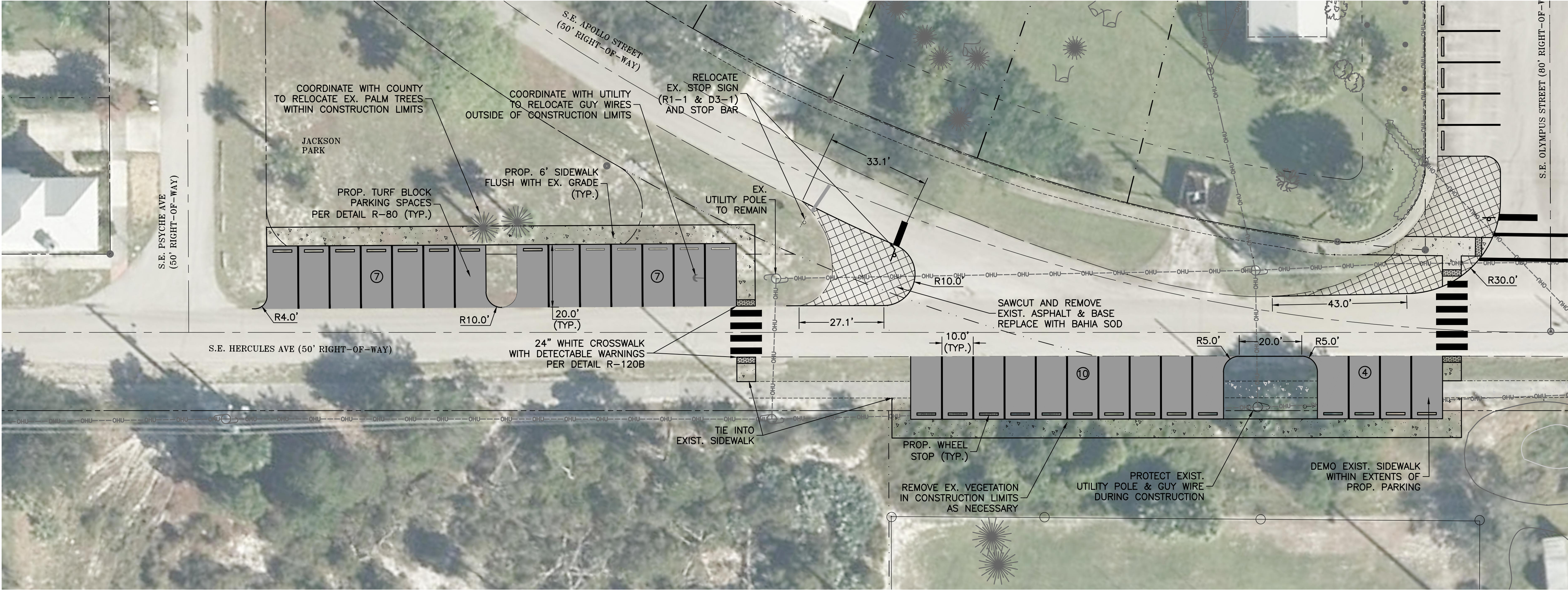
**MARTIN COUNTY**  
 PARKS AND RECREATION DEPARTMENT  
 2401 SE MONTEREY ROAD  
 STUART, FLORIDA 34996  
 PHONE: (772) 288-5400  
 www.martin.fl.us

## JV REED & ZEUS PARK IMPROVEMENTS MARTIN COUNTY, FL PLAN SHEET

**GIANGRANDE ENGINEERING AND PLANNING**  
 2081 SE OCEAN BLVD., SUITE 1A  
 STUART, FLORIDA 34996  
 PH. (772) 888-9076  
 www.gep-llc.com

**LEO GIANGRANDE, PE**  
 License No: 66387  
 Cert. No. 30901





- LEGEND**
- EXIST. EDGE OF PAVEMENT
  - PROP. EDGE OF PAVEMENT
  - PROP. STRIPING
  - EXIST. SIGN
  - ▭ PROP. WHEEL STOP
  - # PROP. NUMBER OF PARKING SPACES
  - ▨ PROP. IMPERVIOUS AREA REMOVAL
  - ▤ PROP. CONCRETE SIDEWALK
  - PROP. TURF BLOCK
  - ▦ EXIST. CONCRETE SIDEWALK

Drawing Name: C:\Users\GEP5\OneDrive\Shared Folders\GEP Projects\2018\18-002 JV Reed and Zeus Park\Design\JV Reed Plans\Plan Sheets.dwg Layout Name: P-2 - Plotted by: GEP5 - Date: 8/10/2018 - 9:51 AM - GEP


DATE	BY	REVISIONS

Date: 8/2/2018  
Scale: 1"=20'  
Design By: BF  
Drawn By: JLS  
Check By: LDG



**MARTIN COUNTY**  
PARKS AND RECREATION DEPARTMENT  
2401 SE MONTEREY ROAD  
STUART, FLORIDA 34996  
PHONE: (772) 288-5400  
www.martin.fl.us

JV REED & ZEUS PARK IMPROVEMENTS  
MARTIN COUNTY, FL  
PLAN SHEET



**GIANGRANDE ENGINEERING AND PLANNING**  
2081 SE OCEAN BLVD., SUITE 1A  
STUART, FLORIDA 34996  
PH. (772) 888-9076  
www.gep-llc.com

LEO GIANGRANDE, PE  
License No: 66387



