

# SEPTIC TO SEWER CONVERSION UPDATE

## “Connect to Protect” Initiative

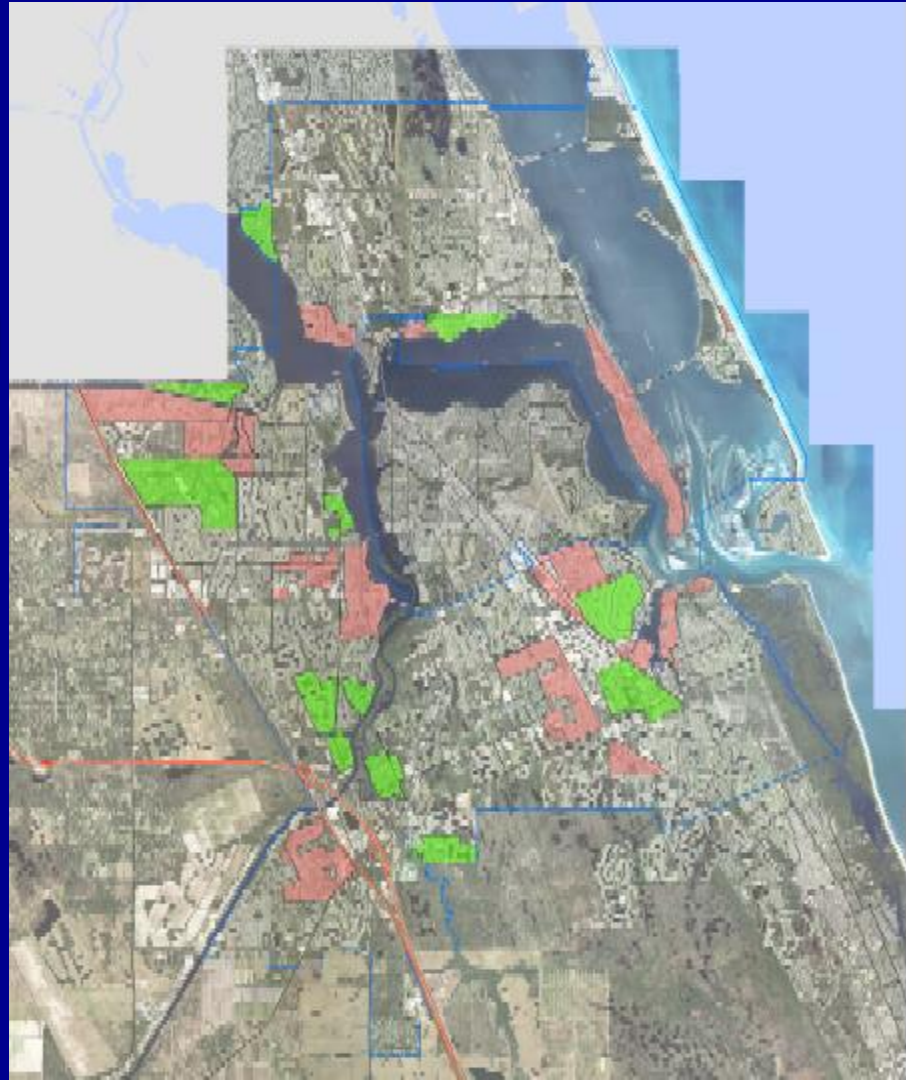


Presented By Martin County  
Utilities

November 20, 2018

# Septic Tanks Remaining in the Area

Approximately 10,300  
ERC's in the prioritized  
areas



# Completed Vacuum Sewer Projects

Seagate Harbor / Lighthouse Point  
452 ERC's – 100% Connected

North River Shores Phase I  
454 ERC's - 88% Connected

# North River Shores Phase II - Assessment Costs

Construction Cost	\$5,448,767
Engineering/Contingencies/CEI Services	699,808
Land Acquisition/Site Planning	253,652
Capital Facility Charges (303.5 @ \$2100)	637,350
Soft Costs	<u>13,750</u>
Subtotal	\$7,053,327
<b>Legislative Appropriations Grant</b>	<b>(1,500,000)</b>
<b>Utilities Contribution</b>	<b><u>(2,000,000)</u></b>
TOTAL ASSESSED COST	\$3,553,327

# NORTH RIVER SHORES PHASE II EQUIVALENT RESIDENTIAL COSTS

TOTAL ASSESSABLE COST	\$3,553,327
-----------------------	-------------

ERC with Additional Funding	\$11,708
-----------------------------	----------

ERC without Additional Funding	\$23,240
--------------------------------	----------

# Golden Gate Estimated Assessment Costs

Construction Cost	\$11,500,000
Engineering/CEI Services	475,800
Site Planning	25,000
Capital Facility Charges (775 @ \$2100)	1,627,500
Soft Costs	<u>13,750</u>
Subtotal	\$13,642,050
<b>Funding Shortfall</b>	<b>(4,342,050)</b>
<b>Utilities Contribution</b>	<b><u>(0)</u></b>
TOTAL ASSESSABLE COST	\$9,300,000

# GOLDEN GATE EQUIVALENT RESIDENTIAL COSTS

TOTAL ASSESABLE COST	\$9,300,000
ERC with Additional Funding	\$12,000
ERC without Additional Funding	\$17,602

# Service Availability Letter

## CURRENT POLICY

- Letter issued to all customers that sewer is now available
- Customer has 365 days to connect from date of letter
- Does not address non-compliance

## PROPOSED POLICY

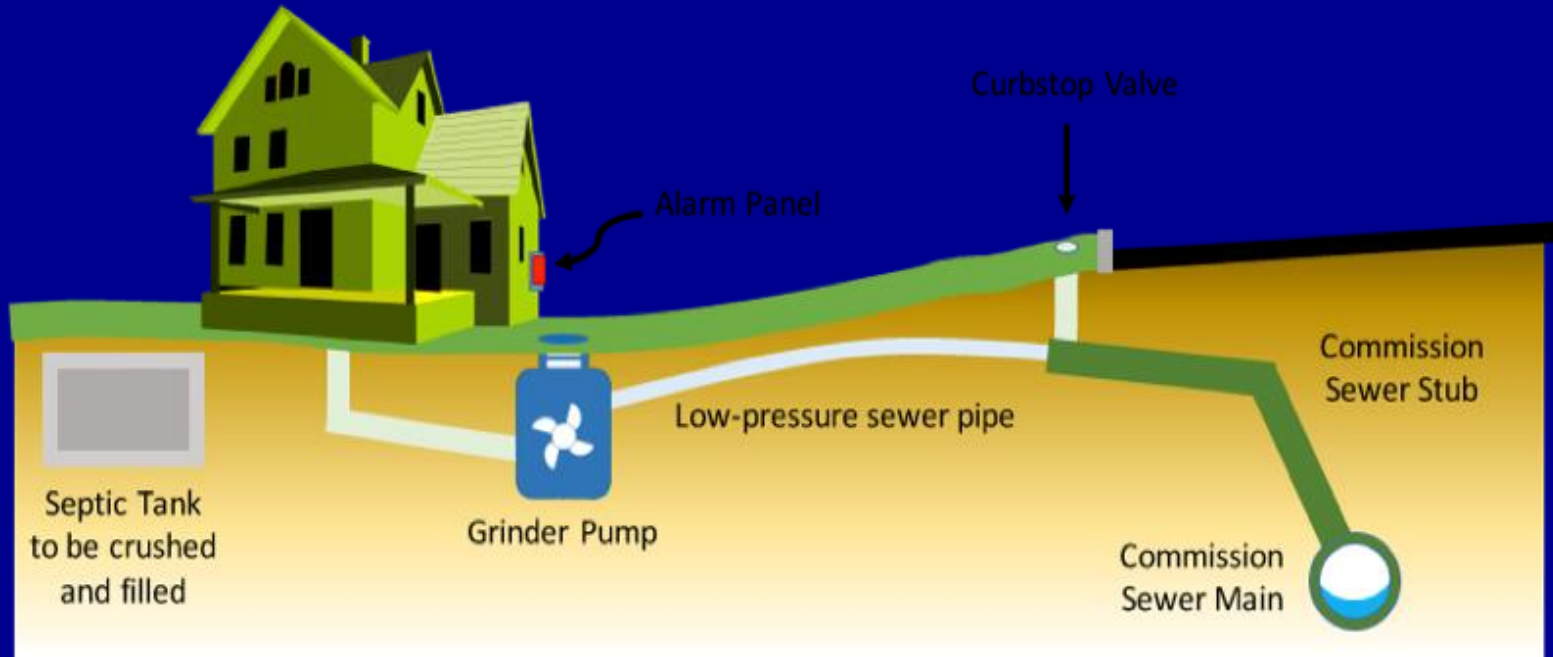
- Customers not connected within 365 days will be billed the Sewer Service Availability Charge (SACs), currently \$17.95 per month (including North River Shores Phase I)



# “Connect to Protect” Grinder Sewer System Program

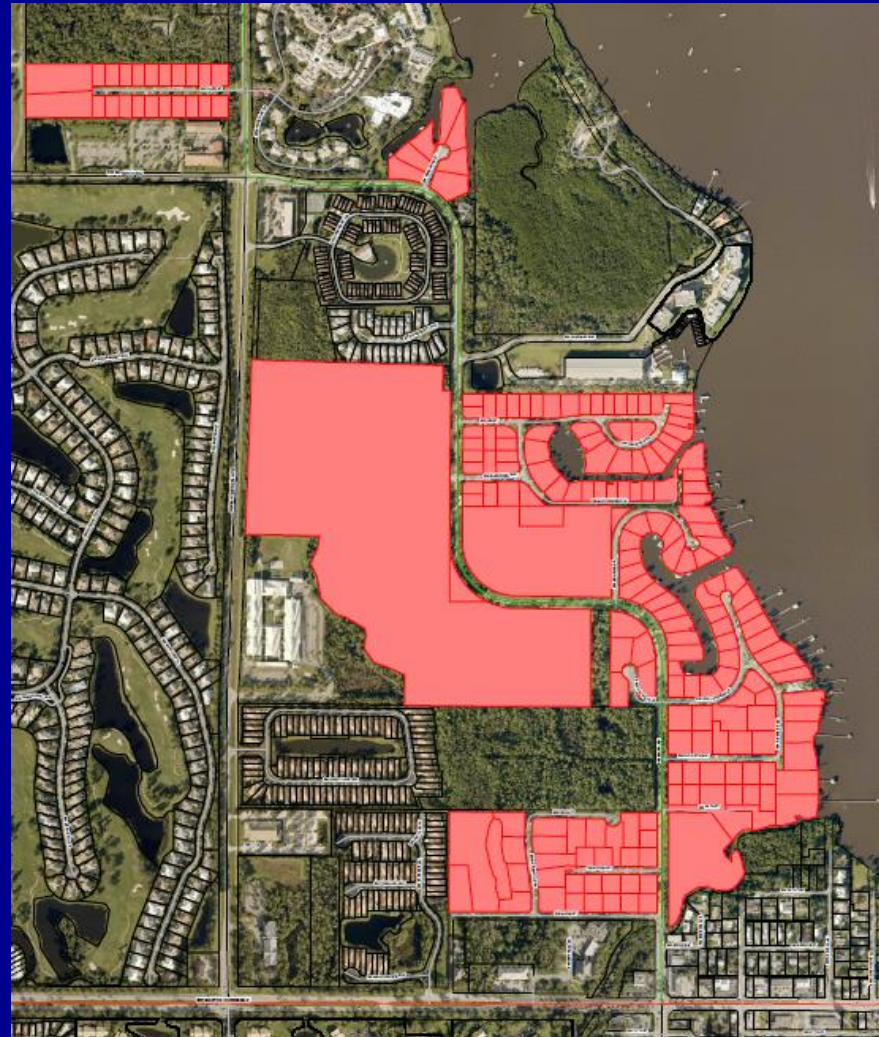
- Provides alternative sewer system to areas not identified for vacuum sewer system
- Backbone force mains installed utilizing capital funds
- Provides financial incentives for early connection
- Provides low interest / no interest payment plan
- One stop shop – customer signs up - we do the rest
- Construction Specifications and Details are complete
- Draft program policy is complete

# Grinder System



# North Mapp Road Area

- Includes approximately 200 ERCs
- Currently under design



# \*Proposed Fee Structure For Grinder Sewer System

Conversion Fees (Existing Home and Septic System)	
Agreement signed within 12 months of notification and paid in full	\$10,000
Agreement signed within 12 months of notification and paid via monthly installments	\$10,500
Agreement signed after 12 months of notification and paid in full	\$11,000
Agreement signed after 12 months of notification and paid via monthly installments	\$11,500
New Construction	
Agreement paid in full	\$11,000

\* Subject to BOCC Approval



# Recommendations

1. Move that the Board approve the Large Sewer program, as described.
2. Move that the Board direct staff to bring back dedicated funding (\$2M) options for Large Sewer Projects
3. Move that the Board direct staff to bring back a program, supported in the USD CIP, that will provide a backbone Grinder Sewer System to support up to 300 connections per year.
4. Move that the Board approve the implementation of the base monthly (SAC) fee for those customers that do not connect within a year of service availability.



# Questions

