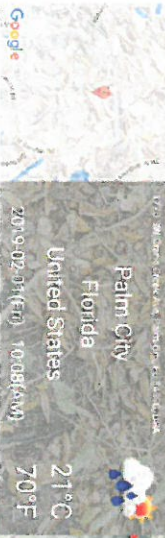


1772 SW Crane Creek Ave. Alum. Arch Pipe Damage



Pipe Heaved location

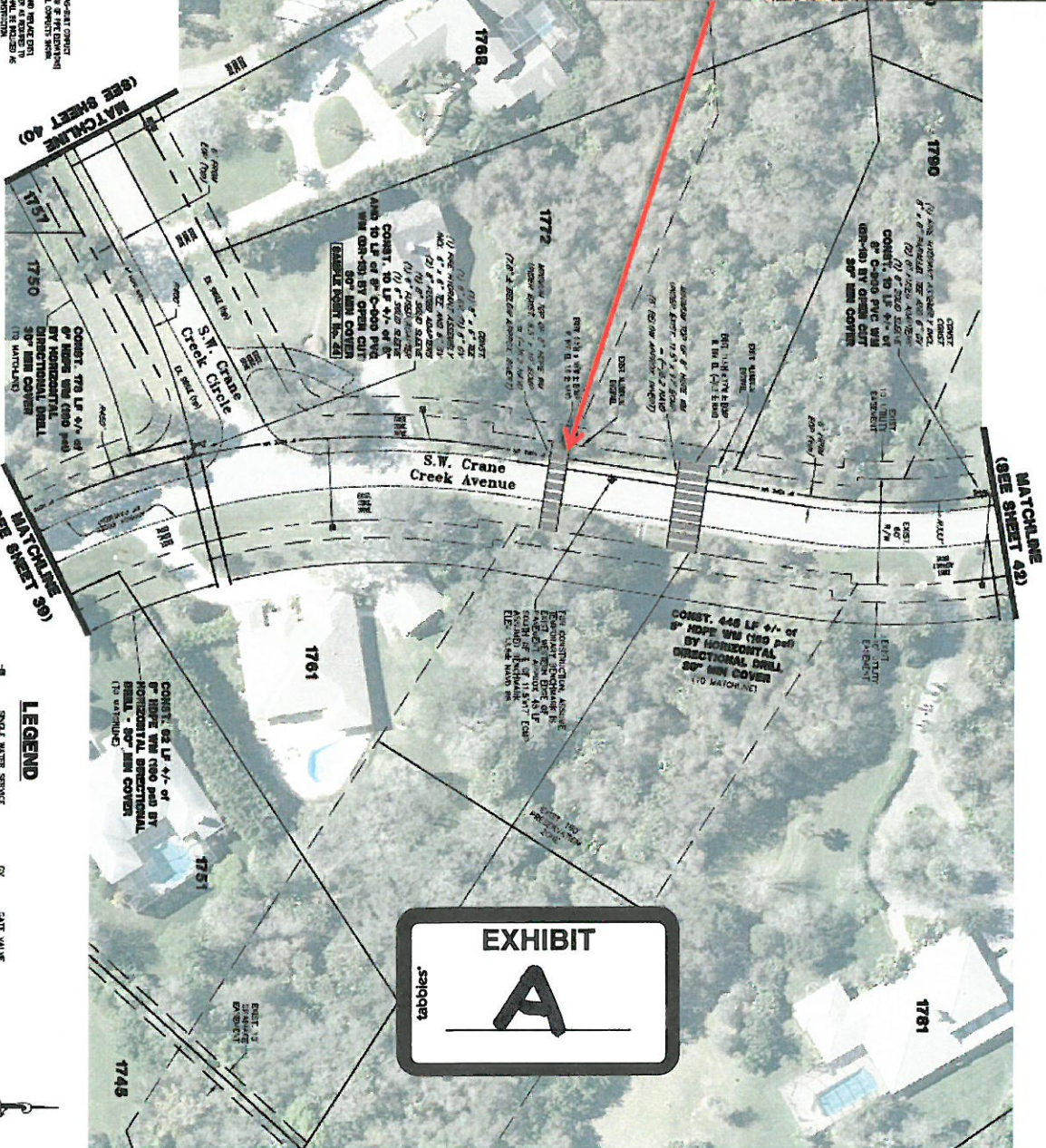


EXHIBIT
A

ASB/BBB

DATE	BY	REVISIONS
APR 2016		
SCALE: 1" = 30'		
DESIGN: SJV		
DRAWN: SJV		
CHECKED: YEA		
DWG: www.mcu-fl.com		

Crane Creek
MARTIN COUNTY, FL
WATER MAIN EXTENSION
WATER MAIN EXTENSION PLANS

MARTIN COUNTY UTILITIES
2475 S.E. OCEAN BOULEVARD
ST. AUGUSTINE, FL 32080
Phone: (772) 221-1442 Fax: (772) 221-1447

UNAUTHORIZED USE OR REPRODUCTION OF ANY PART OF THIS DOCUMENT IS PROHIBITED. THE USER OF THIS DOCUMENT ASSUMES ALL LIABILITY FOR ANY AND ALL DAMAGES, INCLUDING REASONABLE ATTORNEY'S FEES, ARISING OUT OF OR FROM THE USE OF THIS DOCUMENT.

KEY MAP

LEGEND

- 1. 6" HDPE W/ 100 psi
- 2. 6" HDPE W/ 100 psi
- 3. 6" HDPE W/ 100 psi
- 4. 6" HDPE W/ 100 psi
- 5. 6" HDPE W/ 100 psi
- 6. 6" HDPE W/ 100 psi
- 7. 6" HDPE W/ 100 psi
- 8. 6" HDPE W/ 100 psi
- 9. 6" HDPE W/ 100 psi
- 10. 6" HDPE W/ 100 psi
- 11. 6" HDPE W/ 100 psi
- 12. 6" HDPE W/ 100 psi
- 13. 6" HDPE W/ 100 psi
- 14. 6" HDPE W/ 100 psi
- 15. 6" HDPE W/ 100 psi
- 16. 6" HDPE W/ 100 psi
- 17. 6" HDPE W/ 100 psi
- 18. 6" HDPE W/ 100 psi
- 19. 6" HDPE W/ 100 psi
- 20. 6" HDPE W/ 100 psi
- 21. 6" HDPE W/ 100 psi
- 22. 6" HDPE W/ 100 psi
- 23. 6" HDPE W/ 100 psi
- 24. 6" HDPE W/ 100 psi
- 25. 6" HDPE W/ 100 psi
- 26. 6" HDPE W/ 100 psi
- 27. 6" HDPE W/ 100 psi
- 28. 6" HDPE W/ 100 psi
- 29. 6" HDPE W/ 100 psi
- 30. 6" HDPE W/ 100 psi
- 31. 6" HDPE W/ 100 psi
- 32. 6" HDPE W/ 100 psi
- 33. 6" HDPE W/ 100 psi
- 34. 6" HDPE W/ 100 psi
- 35. 6" HDPE W/ 100 psi
- 36. 6" HDPE W/ 100 psi
- 37. 6" HDPE W/ 100 psi
- 38. 6" HDPE W/ 100 psi
- 39. 6" HDPE W/ 100 psi
- 40. 6" HDPE W/ 100 psi
- 41. 6" HDPE W/ 100 psi
- 42. 6" HDPE W/ 100 psi
- 43. 6" HDPE W/ 100 psi
- 44. 6" HDPE W/ 100 psi
- 45. 6" HDPE W/ 100 psi
- 46. 6" HDPE W/ 100 psi
- 47. 6" HDPE W/ 100 psi
- 48. 6" HDPE W/ 100 psi
- 49. 6" HDPE W/ 100 psi
- 50. 6" HDPE W/ 100 psi
- 51. 6" HDPE W/ 100 psi
- 52. 6" HDPE W/ 100 psi
- 53. 6" HDPE W/ 100 psi
- 54. 6" HDPE W/ 100 psi
- 55. 6" HDPE W/ 100 psi
- 56. 6" HDPE W/ 100 psi
- 57. 6" HDPE W/ 100 psi
- 58. 6" HDPE W/ 100 psi
- 59. 6" HDPE W/ 100 psi
- 60. 6" HDPE W/ 100 psi
- 61. 6" HDPE W/ 100 psi
- 62. 6" HDPE W/ 100 psi
- 63. 6" HDPE W/ 100 psi
- 64. 6" HDPE W/ 100 psi
- 65. 6" HDPE W/ 100 psi
- 66. 6" HDPE W/ 100 psi
- 67. 6" HDPE W/ 100 psi
- 68. 6" HDPE W/ 100 psi
- 69. 6" HDPE W/ 100 psi
- 70. 6" HDPE W/ 100 psi
- 71. 6" HDPE W/ 100 psi
- 72. 6" HDPE W/ 100 psi
- 73. 6" HDPE W/ 100 psi
- 74. 6" HDPE W/ 100 psi
- 75. 6" HDPE W/ 100 psi
- 76. 6" HDPE W/ 100 psi
- 77. 6" HDPE W/ 100 psi
- 78. 6" HDPE W/ 100 psi
- 79. 6" HDPE W/ 100 psi
- 80. 6" HDPE W/ 100 psi
- 81. 6" HDPE W/ 100 psi
- 82. 6" HDPE W/ 100 psi
- 83. 6" HDPE W/ 100 psi
- 84. 6" HDPE W/ 100 psi
- 85. 6" HDPE W/ 100 psi
- 86. 6" HDPE W/ 100 psi
- 87. 6" HDPE W/ 100 psi
- 88. 6" HDPE W/ 100 psi
- 89. 6" HDPE W/ 100 psi
- 90. 6" HDPE W/ 100 psi
- 91. 6" HDPE W/ 100 psi
- 92. 6" HDPE W/ 100 psi
- 93. 6" HDPE W/ 100 psi
- 94. 6" HDPE W/ 100 psi
- 95. 6" HDPE W/ 100 psi
- 96. 6" HDPE W/ 100 psi
- 97. 6" HDPE W/ 100 psi
- 98. 6" HDPE W/ 100 psi
- 99. 6" HDPE W/ 100 psi
- 100. 6" HDPE W/ 100 psi

0 30 60
Feet

SHEET 41 OF 52



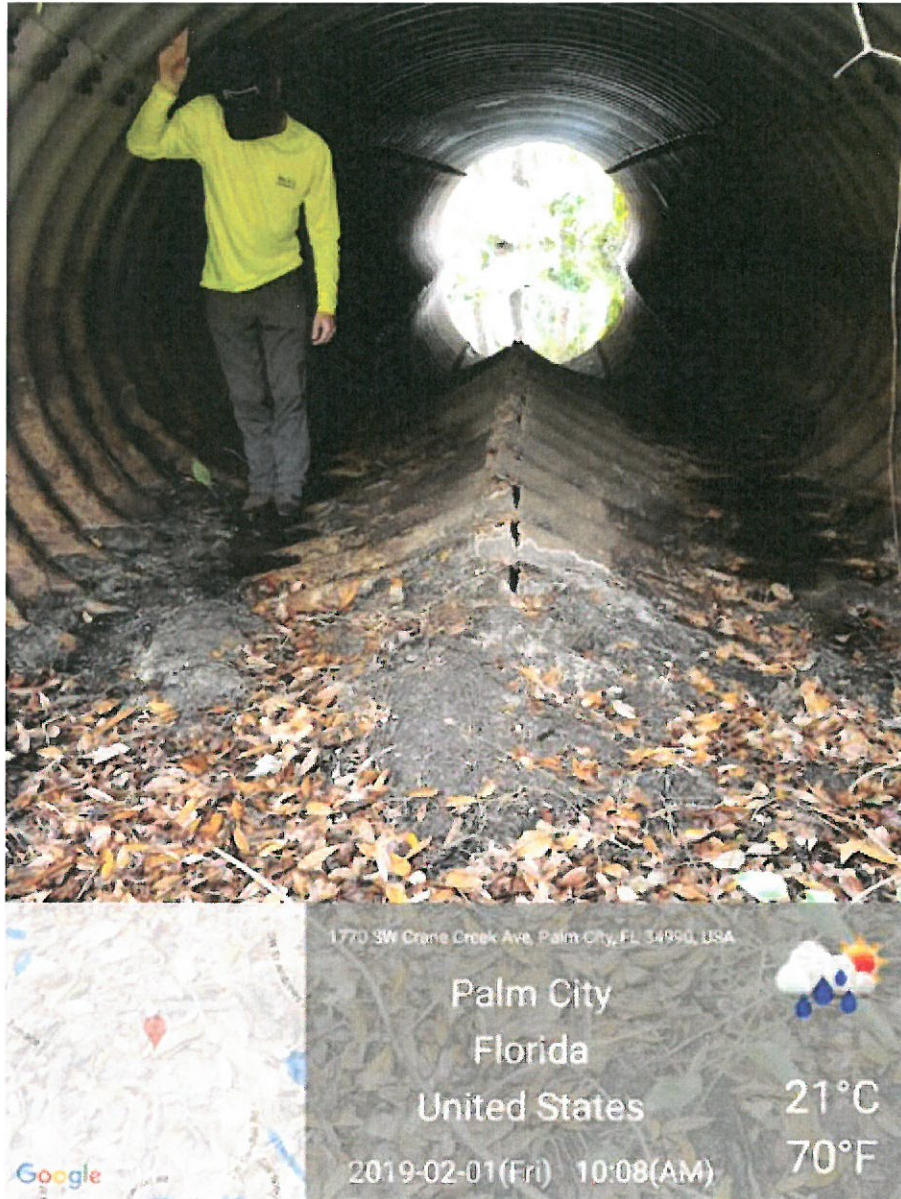
Google

1770 SW Crane Creek Ave, Palm City, FL 34990, USA

Palm City
Florida
United States

2019-02-01 (Fri) 10:12 (AM)

21°C
70°F



3



PROPOSAL

2598 SW Aberdeen Street
Port St. Lucie, FL 34953
Ph (772) 418-0803 / Fax (772) 340-7099

DATE: 7/22/19
PROPOSAL # 554.01
REVISED

Customer:

LaCONTE ENGINEERING
2440 SE FEDERAL HWY, SUITE W
STUART, FL 34994
Ph (772) 370-5871

PROJECT

CRANE CREEK POA
1772 SW CRANE CREEK AVE
ALUMINIUM ARCH PIPE REPAIR

Item	Description	Qty	Unit	Unit Price	Amount
	CRANE CREEK 1772 SW CRANE CREEK AVE ALUMINIUM ARCH PIPE REPAIR				
1	MOBILIZATION	1	LS	\$ 5,050.00	\$ 5,050.00
2	SAW CUT AND REMOVE EXISTING HEAVED PIPE APPROX. 6' 8" x 19'	1	LS	\$ 1,080.00	\$ 1,080.00
3	REGULAR EXCAVATION / EMBANKMENT	1	EA	\$ 3,350.00	\$ 3,350.00
4	10" x 6'-8" x 19' CONCRETE SLAB W/ #4 REINF @ 9" O.C.E.W., 3000 PSI FIBER REINFORCE	15	SY	\$ 545.00	\$ 8,175.00
5	SITE RESTORATION	1	LS	\$ 1,110.00	\$ 1,110.00
6	SHORING	1	EA	\$ 500.00	\$ 500.00
	<u>PRICE NOT INCLUDED IN TOTAL, COST IF REQUIRED</u>				
ALT-1	BY-PASS AND DEWATERING	1	LS	\$ 3,980.00	
ALT-2	CONCRETE TESTING	1	LS	\$ 475.00	
	<u>TOTAL DOES NOT INCLUDE THE FOLLOWING</u> PERMITS, BOND, FINSH CONCRETE SEALANT, UTILITY RELOCATION, REMOVAL OR REPLACEMENT OF UNSUITABLE MATERIALS				
				TOTAL	\$ 19,265.00
All work is to be completed in a professional manner according to standard practices. Any alterations or deviations from above specification involving extra cost will be executed only upon written change order, and will become an extra charge over and above the proposal. All agreements contingent upon strike, accidents or delays beyond our control. Owner to carry fire, tornado and any other necessary insurance. Our workers are fully covered by Workers' Compensation Insurance.					
ACCEPTANCE OF PROPOSAL - The above prices and specifications are satisfactory and are hereby accepted. Southern Underground, Inc., is authorized to perform the work as specified. Payment due net 30			Signature _____		
			Date of Acceptance _____		

THANK YOU FOR YOUR BUSINESS!

