

Prepared By: Maria Jose  
Martin County  
Growth Management Department  
2401 S.E. Monterey Road  
Stuart, FL 34996

---

This document may be reproduced upon request in an alternative format by contacting the County ADA Coordinator (772) 320-3131, the County Administration Office (772) 288-5400, Florida Relay 711, or by completing our accessibility feedback form at [www.martin.fl.us/accessibility-feedback](http://www.martin.fl.us/accessibility-feedback)

**BEFORE THE BOARD OF COUNTY COMMISSIONERS  
MARTIN COUNTY, FLORIDA**

**RESOLUTION NUMBER 20-**

**A RESOLUTION OF MARTIN COUNTY, FLORIDA, TO INITIATE TEXT AND FUTURE  
LAND USE MAP AMENDMENTS TO THE COMPREHENSIVE GROWTH  
MANAGEMENT PLAN**

**WHEREAS**, in 2007 the Board of County Commissioners adopted a text amendment to Chapters 4 and 6 of the Comprehensive Growth Management Plan to allow site-build dwellings on homestead property in the Mobile Home future land use designation; and

**WHEREAS**, the Hodapp property, located at 7715 SW 39<sup>th</sup> Street, is currently designated with the Mobile Home future land use and the RT zoning district; and

**WHEREAS**, the Hodapp property does not have a homestead exemption; and

**WHEREAS**, amending the Future Land Use Map and the text of the Comprehensive Growth Management Plan for the Hodapp property will not impact affordable housing stock throughout Martin County; and

**WHEREAS**, the Martin County Comprehensive Growth Management Plan, Section 1-11, Amendment Procedures, states that the Martin County Board of County Commissioners may, by resolution, initiate a request to amend, modify, add to, or change the Comprehensive Growth Management Plan

**NOW, THEREFORE, BE IT RESOLVED BY THE BOARD OF COMMISSIONERS OF  
MARTIN COUNTY, FLORIDA, THAT:**

The Martin County Board of Commissioners herein initiates a Comprehensive Plan Text Amendment along with a Comprehensive Plan Amendment to change the future land use and zoning

to the most appropriate designation for the property identified in the attached Exhibit A, Legal Description and on the attached Exhibit B, Location Map.

**DULY PASSED AND ADOPTED THIS 21<sup>st</sup> DAY OF APRIL 2020.**

**ATTEST:**

**BOARD OF COUNTY COMMISSIONERS  
MARTIN COUNTY, FLORIDA**

\_\_\_\_\_  
**CAROLYN TIMMANN,  
CLERK OF THE CIRCUIT  
COURT AND COMPTROLLER**

**BY:\_\_\_\_\_**  
**HAROLD E. JENKINS II, CHAIRMAN**

**APPROVED AS TO FORM  
AND LEGAL SUFFICIENCY**

**BY:\_\_\_\_\_**  
**SARAH W. WOODS,  
COUNTY ATTORNEY**

## Exhibit A

### Hodapp Property

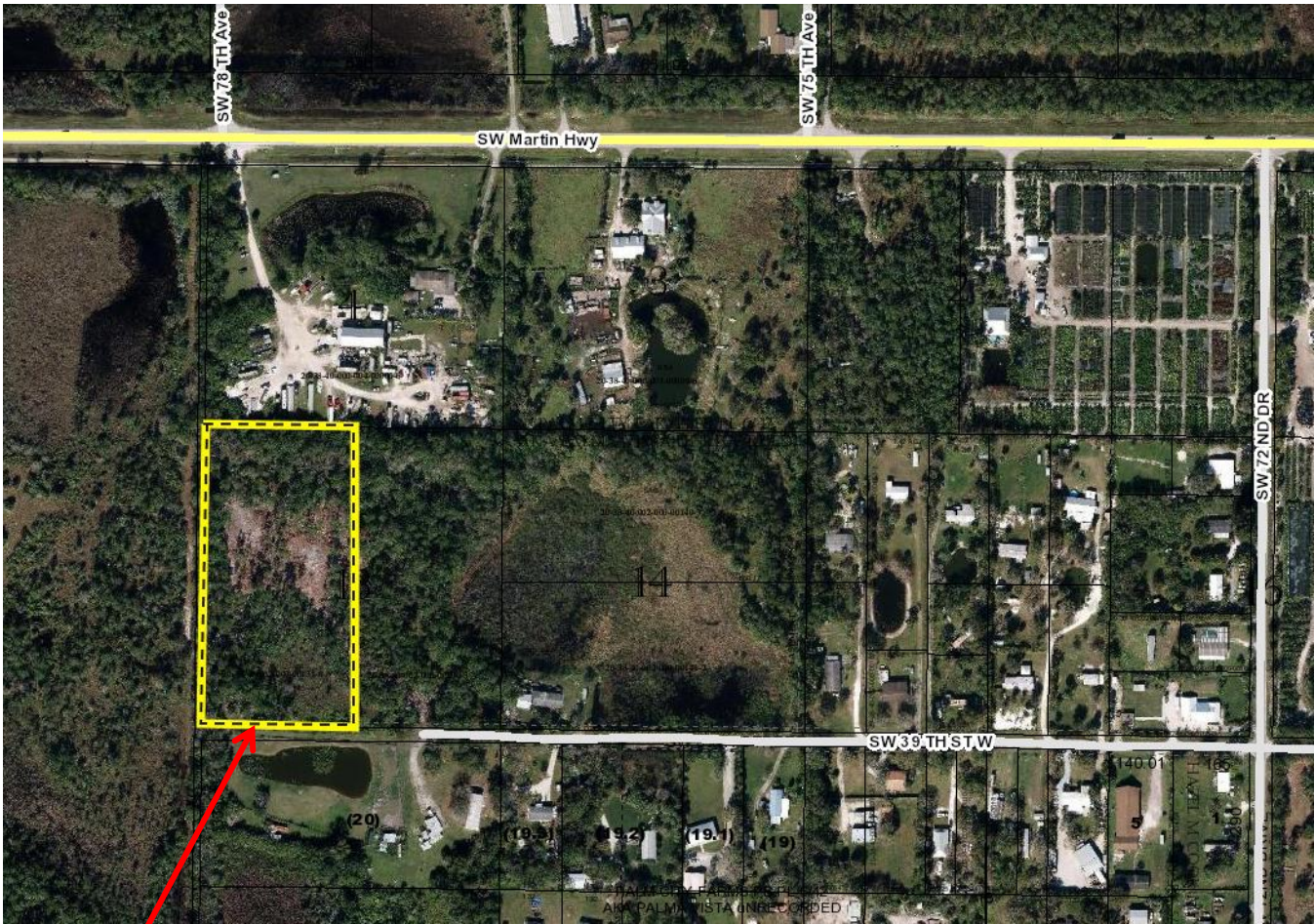
Parcel ID Number: 203840002000001310

### Legal Description:

W 1/2 OF TRACT 13 SEC 20-38-40 PALM CITY FARMS (LESS R/W) - "AKA PALMA VISTA  
UNREC, PER OR 358/204"

# Exhibit B

Location Map:



Hodapp  
Property