

# ENGINEERING PLANS AND SPECIFICATIONS

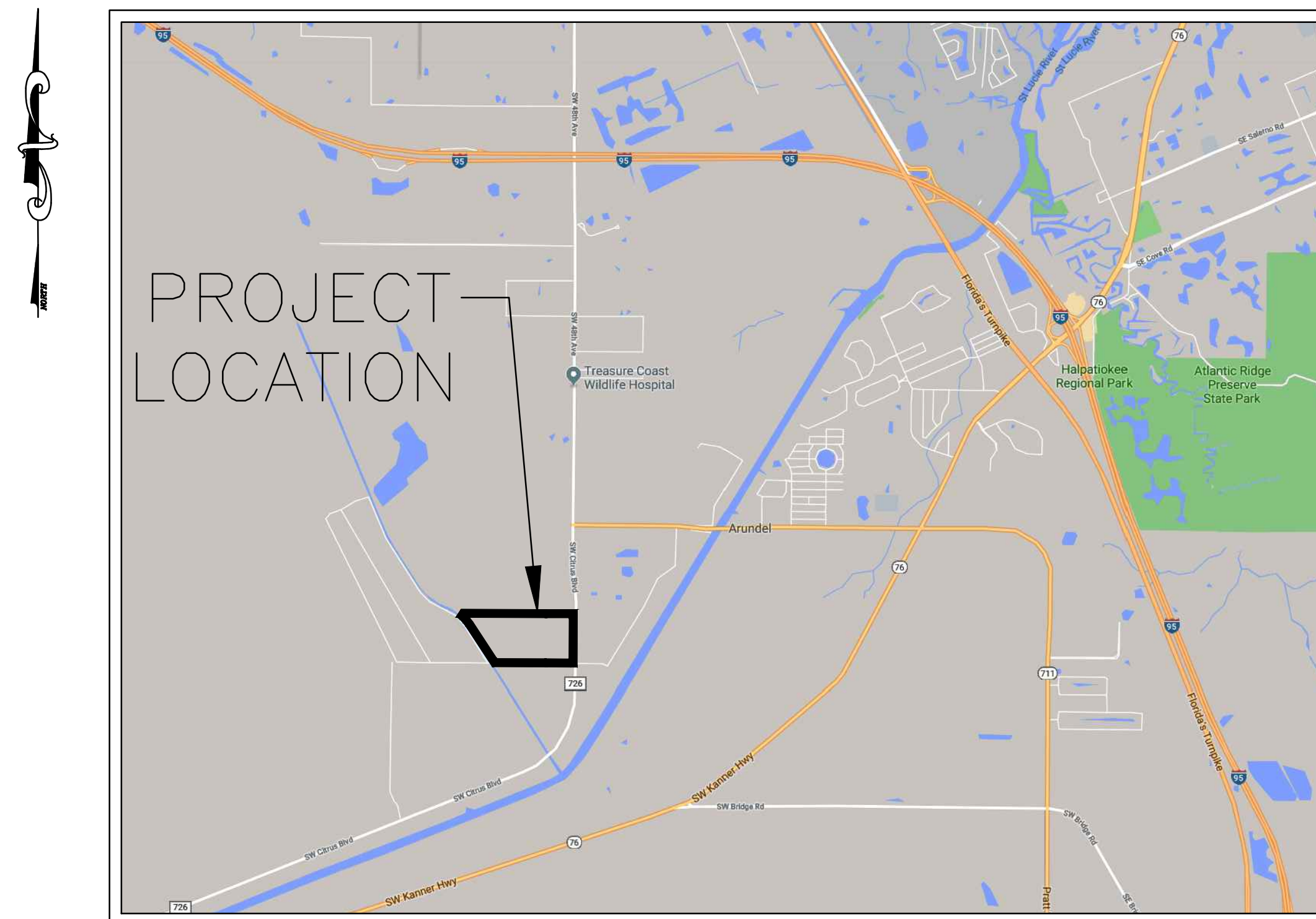
## FOR

# MC320

## SECTION 14 & 15, TOWNSHIP 39 SOUTH, RANGE 40 EAST

## MARTIN COUNTY, FLORIDA

NO.	DATE	REVISION	BY
1	2-27-20	REVISED PER COUNTY STAFF REPORT	DW
2	2-27-20	REVISED PER SFWMD & MARTIN COUNTY	DW



## LOCATION MAP

## SHEET INDEX

<u>SHEET NUMBER</u>	<u>SHEET TITLE/DESCRIPTION</u>
1	COVER
2-3	GRADING & DRAINAGE PLAN
4	CLEARING & EROSION CONTROL PLAN
5	DEWATERING PLAN



THE MILCOR  
GROUP, INC.

CIVIL ENGINEERS  
10975 SE FEDERAL HIGHWAY  
HOBE SOUND, FL 33455-5006

PH: (772) 223-8850  
FAX: (772) 223-8851

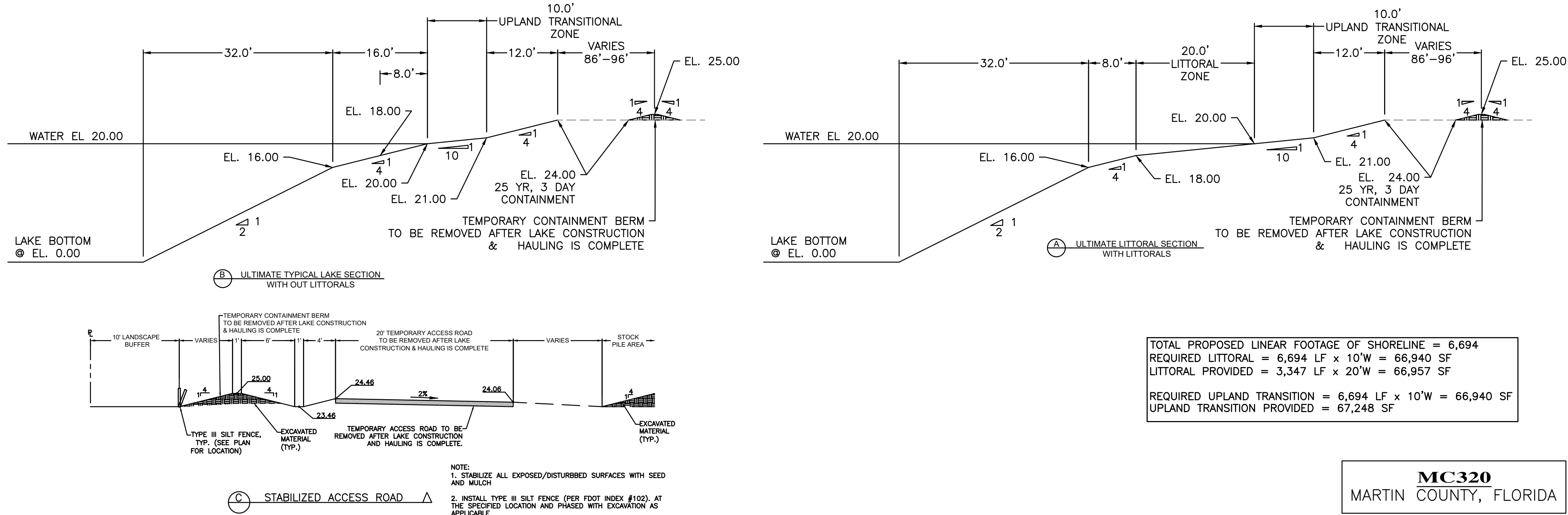
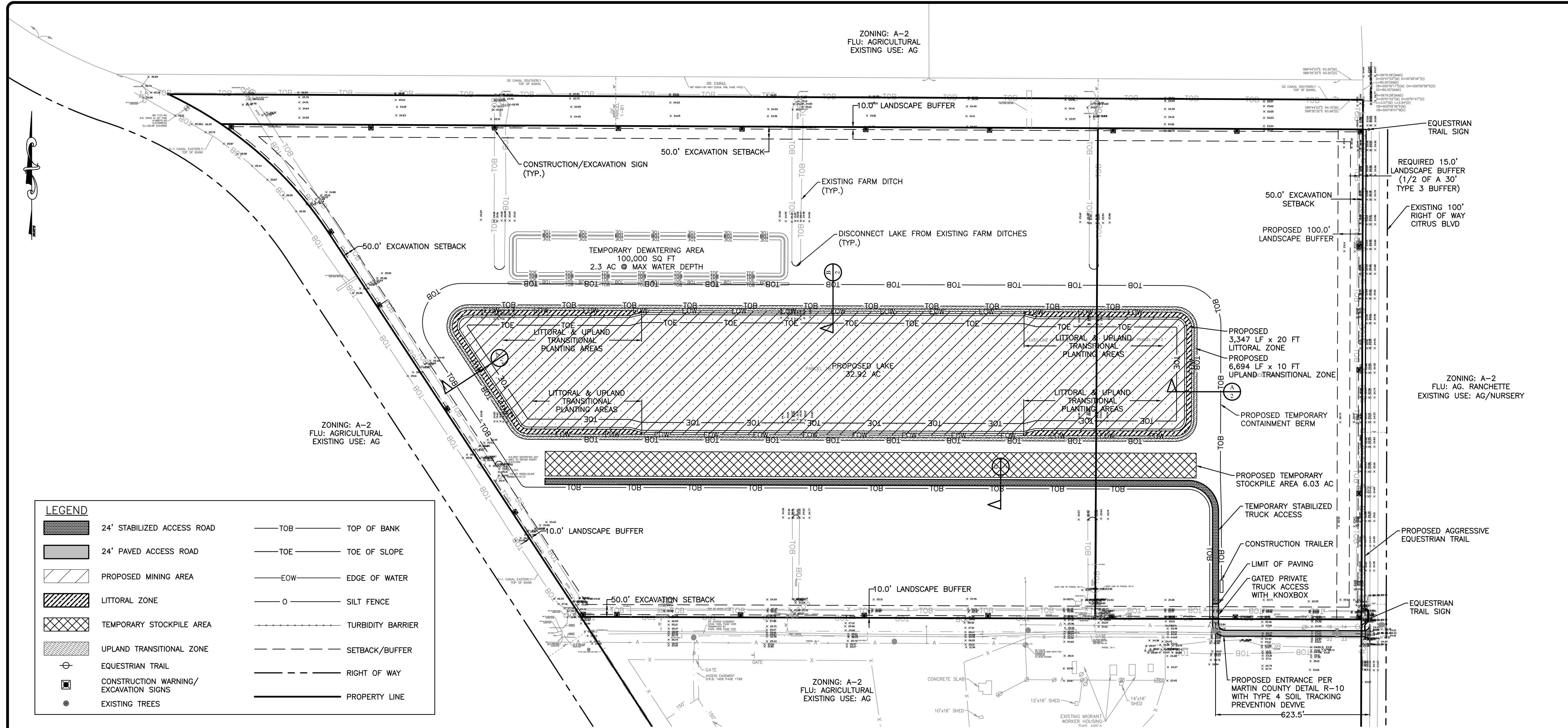
WEB:  
WWW.THEMILCORGROUP.COM  
CERTIFICATE OF AUTHORIZATION:  
28246



**MC320**  
MARTIN COUNTY, FLORIDA



J:\M06 Manci\W0609-Ballyhoo\DWG\DESIGN\BASE.dwg, PRINTED BY: Alexi On Mon, Apr 27 2020



NO.	DATE	REVISION	BY
1	4-16-20	REVISED PER SWMD & MARTIN COUNTY	DW
2	2-27-20	REVISED PER COUNTY STAFF REPORT	DW

CALL 48 HOURS BEFORE YOU DIG  
**811**

VERTICAL DATUM NAVD 88  
( IN FEET )  
1 inch = 200 ft.

DRAWN: PROJECT: FILE: BASE.dwg  
D.W.: 9-6-2019  
M0609

**THE MILCOR GROUP, INC.**  
CIVIL ENGINEERS  
10975 SE FEDERAL HIGHWAY  
HOBE SOUND, FL 33455  
725 SE PORT ST LUCIE BLVD  
UNIT 104  
PORT ST. LUCIE, FL 34984  
PH: (772) 223-8850  
FAX: (772) 223-8851  
WWW.THEMILCORGROUP.COM  
CERTIFICATE OF AUTHORIZATION:  
28246

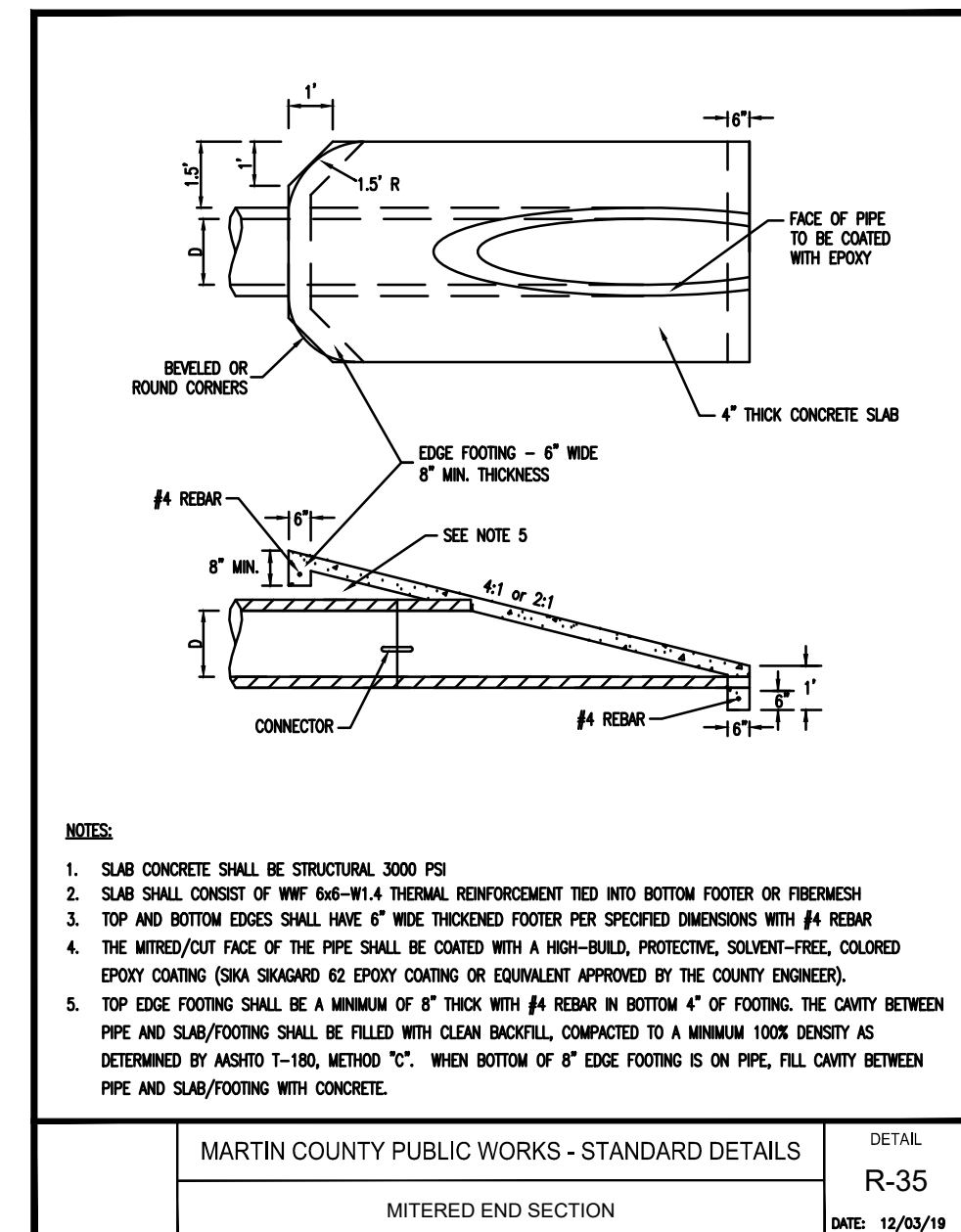
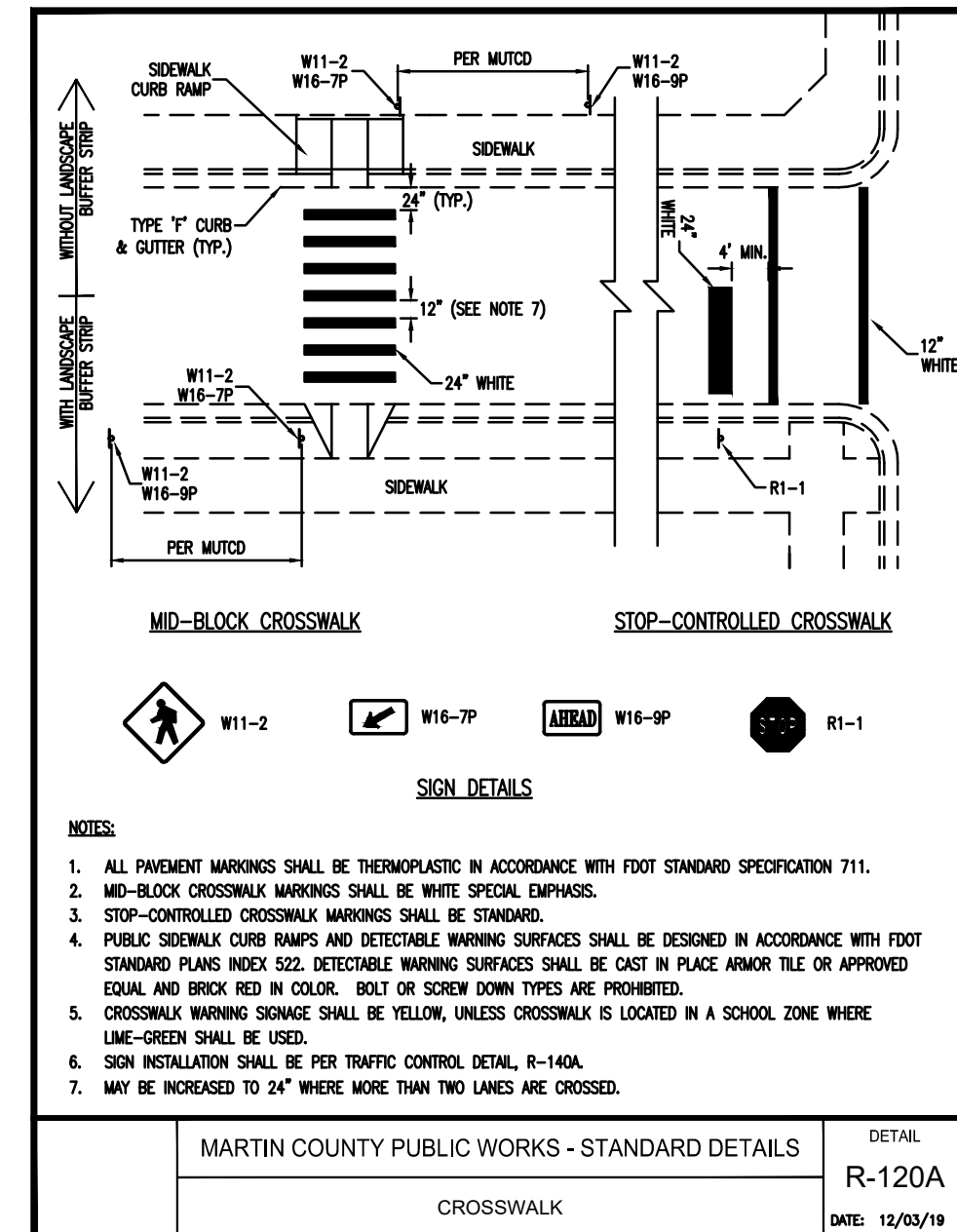
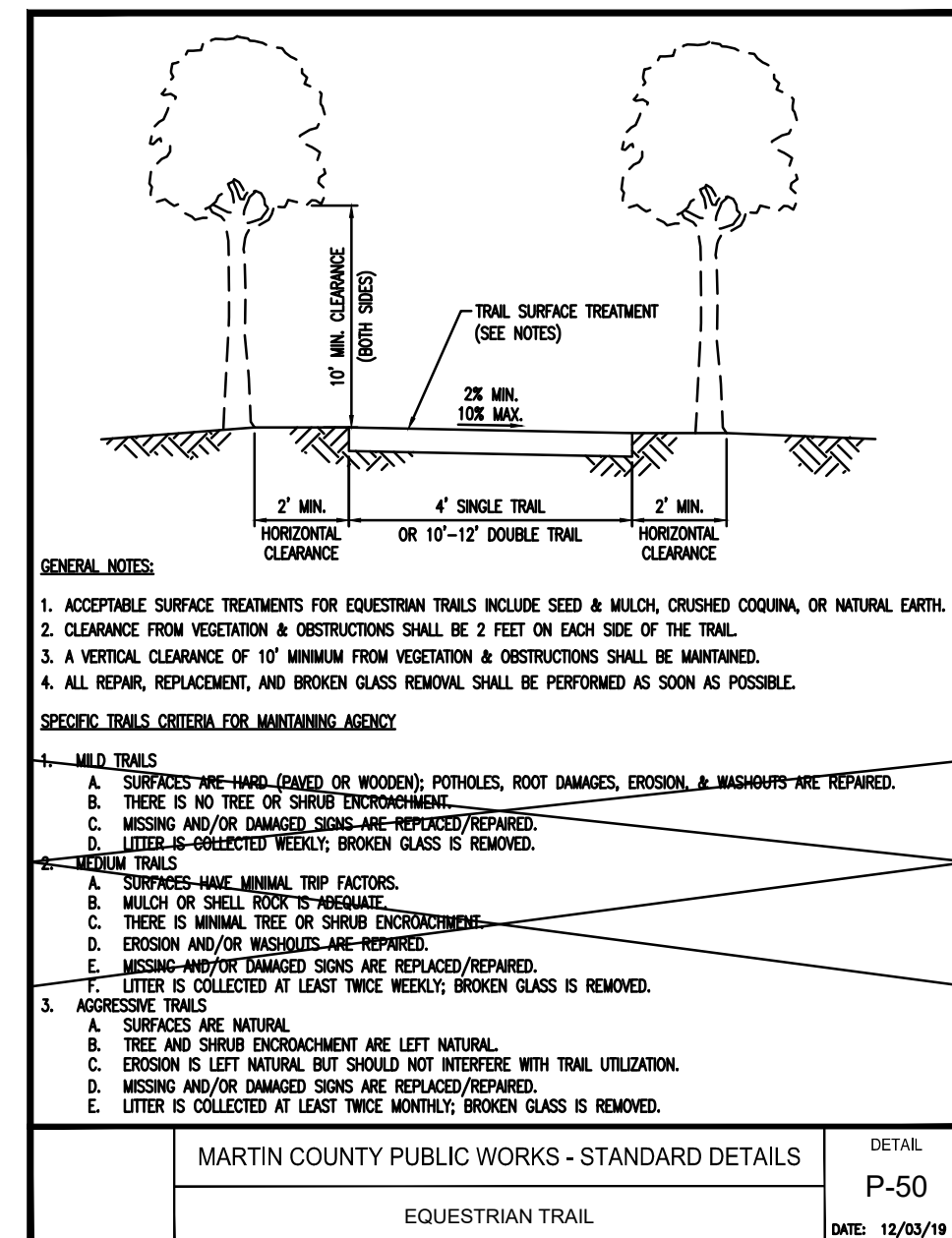
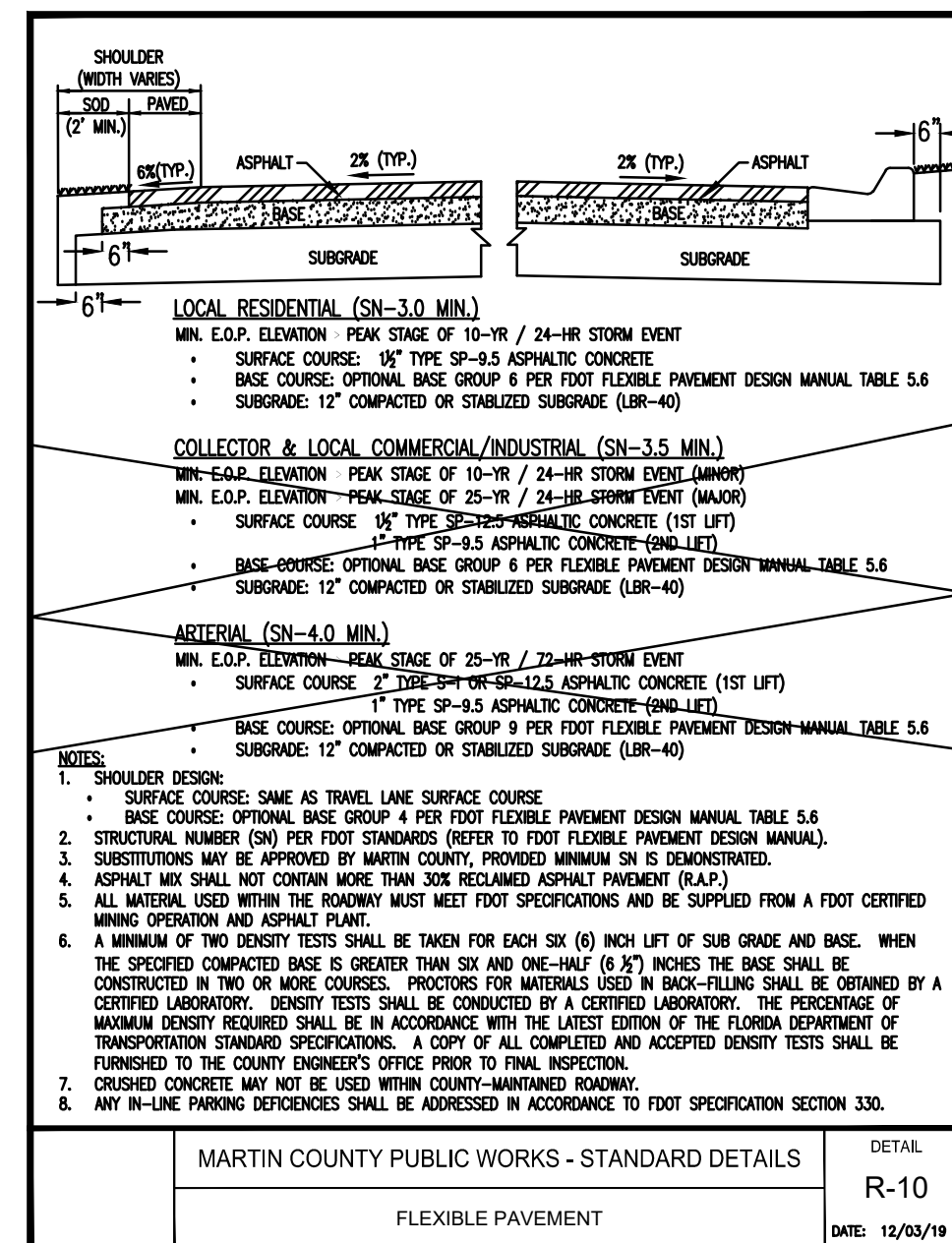
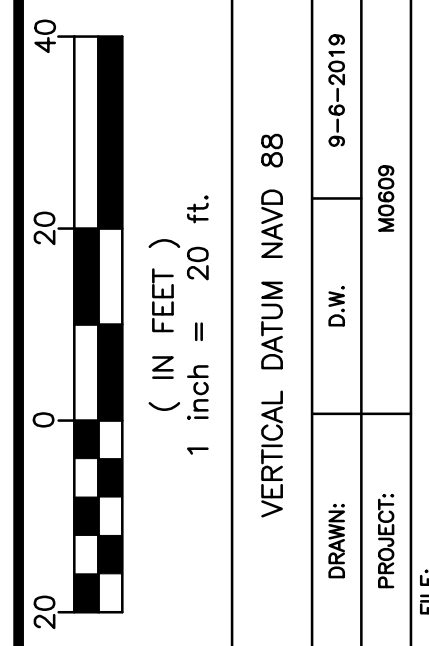
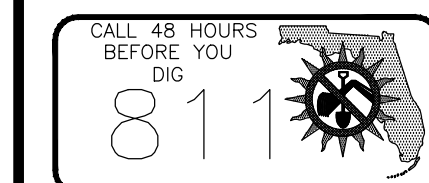
**GRADING AND DRAINAGE PLAN**

**MC320**  
MARTIN COUNTY, FLORIDA

**SHEET NO. 2**

**MEISSA G. COMBET**  
No 59292  
Apr 24 2020  
PROFESSIONAL ENGINEER  
STATE OF FLORIDA



[illegible]

THE  
MILCOR  
GROUP  
INC.

CIVIL ENGINEERS  
10975 SE FEDERAL HIGHWAY  
HOBE SOUND, FL 33455

725 SE PORT ST LUCIE BLV  
UNIT 104  
PORT ST. LUCIE, FL 34984

PH: (772) 223-8850  
FAX: (772) 223-8851

WWW.THEMILCORGROUP.COM

CERTIFICATE OF AUTHORIZATION  
28246

## GRADING AND DRAINAGE PLAN

**MC320**

MARTIN COUNTY FLORIDA



**SHEET NO.**

3

MARTIN MC320  
COUNTY, FLORIDA



1. CULVERT INVERTS SHALL MATCH THE DRAINAGE CONVEYANCE FLOW LINE OF UPSTREAM AND DOWNSTREAM
2. CULVERT SIZE SHALL BE EQUIVALENT OR GREATER THAN UPSTREAM CULVERT OR MIN. 15" DIA. (OR 12"
3. TEMPORARY SIDEWALK MATERIALS TO BE EITHER: PORTLAND CEMENT CONCRETE, ASPHALT CONCRETE, COARSE MILLINGS, OR COMPACTED LIMESTONE BASE.
4. TEMPORARY SIDEWALK TO COMPLY WITH ALL ADA STANDARDS INCLUDING SLOPES AND TRIPPING HAZARDS

DETAIL  
R-39  
DATE: 04/23/19

- D. EROSION AND/OR WASHOUTS ARE REMOVED.
- E. MISSING AND/OR DAMAGED SIGNS ARE REPLACED/REPAIRED.
- F. LITTER IS COLLECTED AT LEAST TWICE WEEKLY; BROKEN GLASS IS REMOVED.

3. AGGRESSIVE TRAILS

- A. SURFACES ARE NATURAL
- B. TREE AND SHRUB ENCROACHMENT ARE LEFT NATURAL
- C. EROSION IS LEFT NATURAL BUT SHOULD NOT INTERFERE WITH TRAIL UTILIZATION
- D. MISSING AND/OR DAMAGED SIGNS ARE REPLACED/REPAIRED.
- E. LITTER IS COLLECTED AT LEAST TWICE MONTHLY; BROKEN GLASS IS REMOVED.

## WORD DETAILS

---

6. ALL OPEN  
OR STAB  
CONSTRU  
7. TEMPORA  
EROSION

DEPLOY IN A MANNER THAT SLT FENCES WILL ACT AS A DAM ACROSS PERMANENT FLOWING WATERCOURSES. SLT FENCES ARE TO BE LOCATED AND LOCATIONS AND TURBIDITY BARRIERS USED AT PERMANENT EDGES OF WATER. CONTRACTOR SHALL PROVIDE SILT SCREENS, HAY BALES OR OTHER SUCH SEDIMENT CONTROL MEASURES DURING CONSTRUCTION. EROSION CONTROL MEASURES SHALL BE INSTALLED LANDWARD OF THE UPLAND BUFFER ZONES AROUND ALL EXPOSED EROSION PRONE AREAS. EROSION CONTROL MEASURES SHALL BE MAINTAINED THROUGHOUT CONSTRUCTION. GRASS SHALL BE STABILIZED AND VEGETATED IMMEDIATELY AFTER CONSTRUCTION TO PREVENT WATER DRIVEN EROSION INTO THE S AND UPLAND BUFFER ZONES.

VEGETATION AND/OR IN-AREA EQUIPMENT MUST BE STOPPED WITHIN THE PROPOSED TURBIDITY BARRIER(S) WHILE WORKING. ANY LOGS, BRANCHES, ROCKS, AND/OR DISTURBED UN-STABILIZED MATERIAL SHALL BE KEPT NEXT TO PREVENT WIND DRIVEN EROSION CONTRIBUTION.

IF

BEYOND  
DRIPLINE

FREE PRESERVATION DETAIL

LC



EQUESTRIANS PERMITTED SIGN

MARTIN MC320  
COUNTY, FLORIDA

**SHEET NO.**

1

## CLEARING & EROSION CONTROL PLAN

**MC320**

MARTIN COUNTY FLORIDA

**SHEET NO.**

4

[illegible]

( IN FEET )  
1 inch = 200 ft.



THE  
MILCOR  
GROUP,  
INC.

CIVIL ENGINEERS  
10975 SE FEDERAL HIGHWAY  
HOBE SOUND, FL 33455

725 SE PORT ST LUCIE BLVD  
UNIT 104  
PORT ST. LUCIE, FL 34984

PH: (772) 223-8850  
FAX: (772) 223-8851

WWW.THEMILCORGROUP.COM

CERTIFICATE OF AUTHORIZATION:  
28246



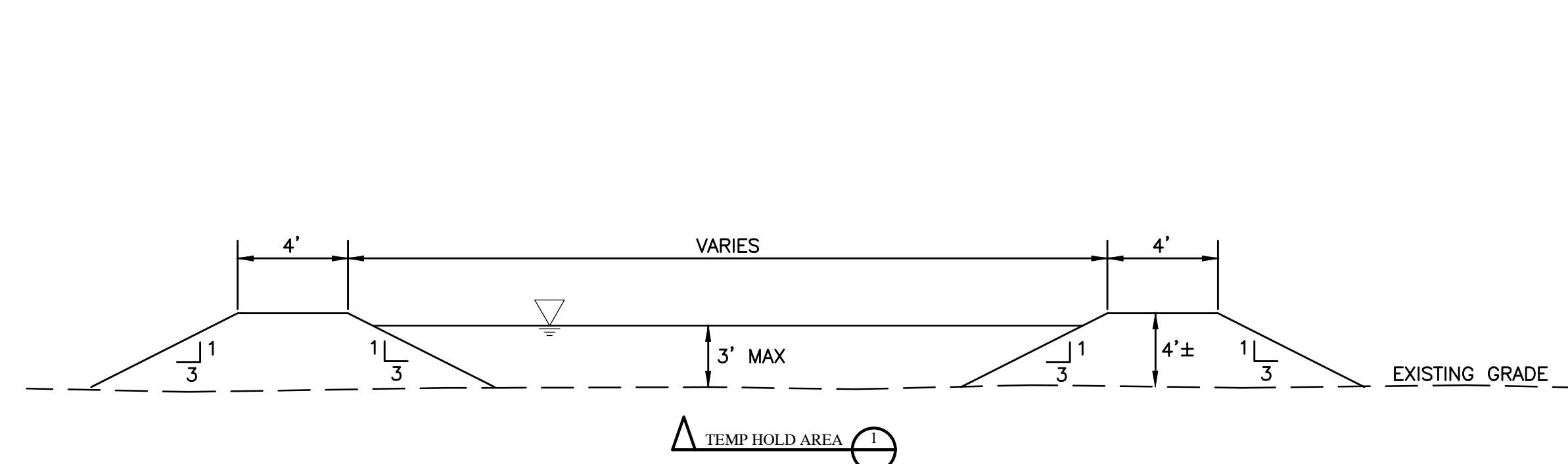
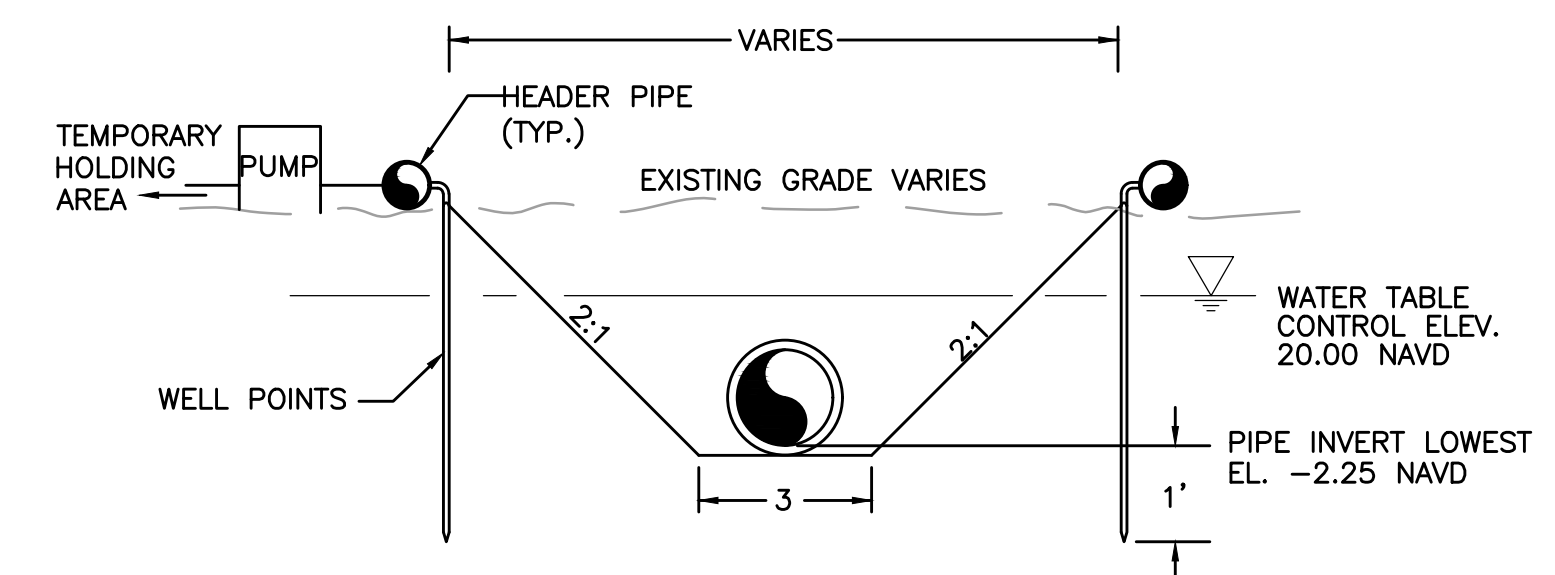


Diagram illustrating a proposed drainage system for a temporary holding area. The system includes a temporary holding area (a square area with a dotted pattern) connected to a proposed drainage pipe/inlets (a long, narrow rectangular area with a dotted pattern). A pump is located at the end of the drainage pipe, discharging into a body of water (represented by a wavy line). The diagram is labeled with "TEMPORARY HOLDING AREA", "PROPOSED DRAINAGE PIPE /INLETS", and "PUMP".

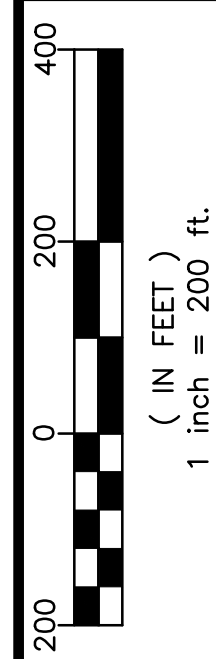



TYPICAL DEWATERING DETAIL FOR PIPE CONSTRUCTION

[illegible]

CALL 48 HOURS  
BEFORE YOU  
DIG

811



( IN FEET )  
1 inch = 200 ft.

VERTICAL DATUM NAVD 88

DRAWN:	D.W.	9-6-2019
--------	------	----------



THE  
MILCOR  
GROUP,  
INC.

CIVIL ENGINEERS  
10975 SE FEDERAL HIGHWAY  
HOBE SOUND, FL 33455

725 SE PORT ST LUCIE BLVD  
UNIT 104  
PORT ST. LUCIE, FL 34984

PH: (772) 223-8850  
FAX: (772) 223-8851

WWW.THEMILCORGROUP.COM

CERTIFICATE OF AUTHORIZATION:  
28246

MC320

MARTIN COUNTY, FLORIDA



SHEET NO.

**5**

**MC320**  
MARTIN COUNTY, FLORIDA