

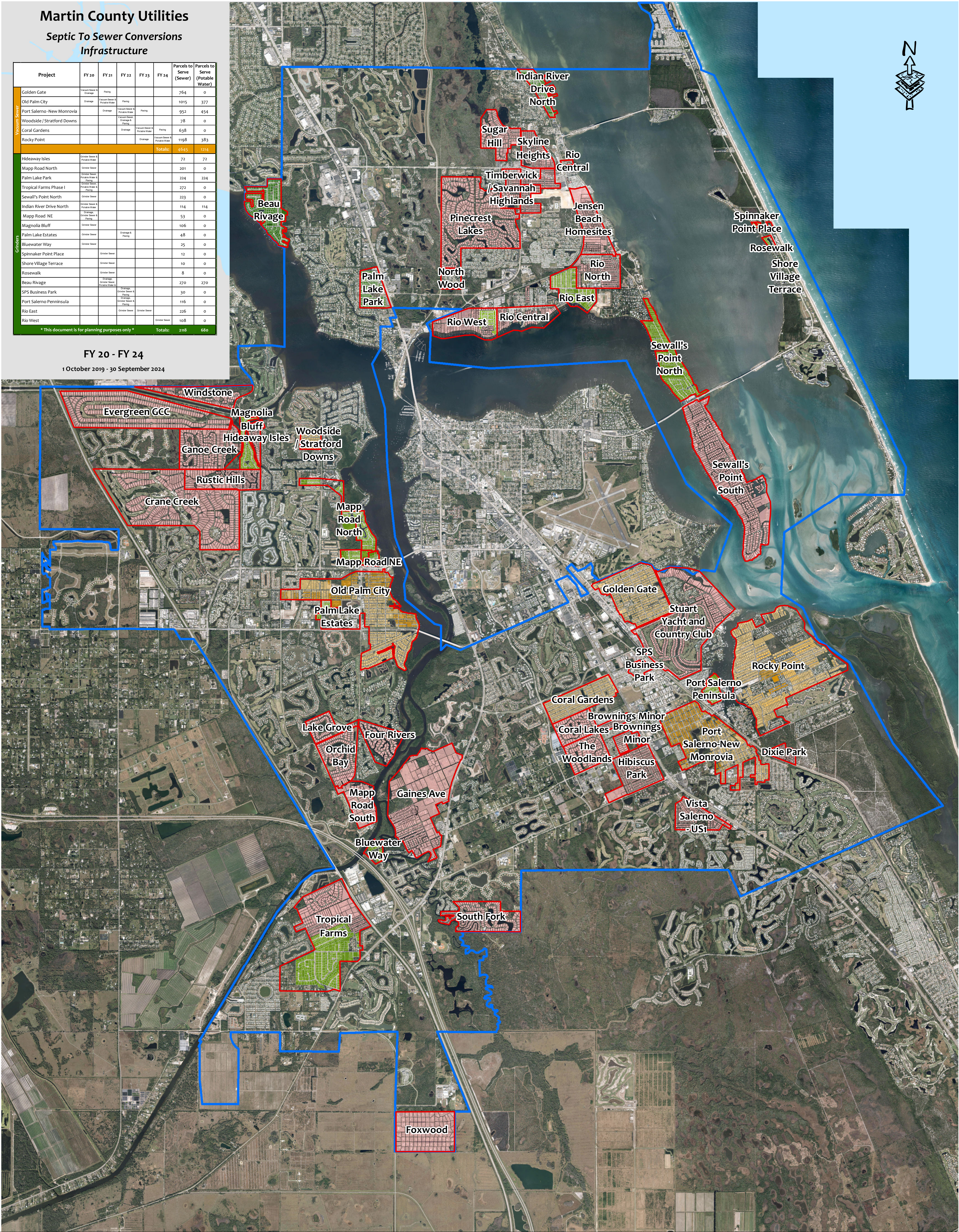
Attachment B:
Septic to Sewer Service Area Map

Martin County Utilities
Septic To Sewer Conversions
Infrastructure

| Project | FY 20 | FY 21 | FY 22 | FY 23 | FY 24 | Parcels to Serve (Sewer) | Parcels to Serve (Potable Water) |
|---------------------------|---------------------------------|------------------------------|---|-------|-------|--------------------------|----------------------------------|
| Golden Gate | Vacuum Sewer & Grindage | Planning | | | | 764 | 0 |
| Old Palm City | Grindage | Vacuum Sewer & Potable Water | Planning | | | 1015 | 377 |
| Port Salerno-New Monrovia | Grindage | | Planning | | | 952 | 454 |
| Woodside/Stratford Downs | | | Vacuum Sewer & Grindage & Potable Water | | | 78 | 0 |
| Coral Gardens | | | Grindage | | | 638 | 0 |
| Rocky Point | | | Grindage | | | 1198 | 383 |
| Totals: | | | | | | 4695 | 1219 |
| Hideaway Isles | Grindage Sewer & Grindage Water | | | | | 72 | 72 |
| Mapp Road North | Grindage Sewer | | | | | 201 | 0 |
| Palm Lake Park | Grindage Sewer & Potable Water | | | | | 224 | 224 |
| Tropical Farms Phase I | Grindage Sewer & Potable Water | | | | | 272 | 0 |
| Sewall's Point North | Grindage Sewer | | | | | 223 | 0 |
| Indian River Drive North | Grindage Sewer & Grindage Water | | | | | 114 | 114 |
| Mapp Road NE | Grindage | | | | | 53 | 0 |
| Magnolia Bluff | Grindage Sewer | | | | | 106 | 0 |
| Palm Lake Estates | Grindage Sewer | Grindage & Planning | | | | 48 | 0 |
| Bluewater Way | Grindage Sewer | | | | | 25 | 0 |
| Spinnaker Point Place | Grindage Sewer | | | | | 12 | 0 |
| Shore Village Terrace | Grindage Sewer | | | | | 10 | 0 |
| Rosewalk | Grindage Sewer | | | | | 8 | 0 |
| Beau Rivage | Grindage Sewer & Grindage Water | | | | | 270 | 270 |
| SPS Business Park | Grindage Sewer & Grindage Water | | | | | 30 | 0 |
| Port Salerno Peninsula | Grindage Sewer & Grindage Water | | | | | 116 | 0 |
| Rio East | Grindage Sewer | | | | | 226 | 0 |
| Rio West | Grindage Sewer | | | | | 108 | 0 |
| Totals: | | | | | | 2118 | 680 |

FY 20 - FY 24

1 October 2019 - 30 September 2024



Martin County Utilities and Solid Waste Department
Septic to Sewer (S2S) Conversion Program

UNAUTHORIZED USE OF ELECTRONIC FILES WITHOUT THE CONSENT OF MARTIN COUNTY UTILITIES IS PROHIBITED. ELECTRONIC FILES ARE FOR REFERENCE PURPOSES ONLY, NOT FOR CONSTRUCTION. THESE DRAWINGS ARE NOT VALID WITHOUT SIGNATURE, SEAL, AND DATE AFFIXED BY THE ENGINEER OF RECORD.

Septic to Sewer Study Areas

- Project Basins
- Outside Five Year Plan

Septic to Sewer 5 Year Plan

- Parcels to Serve Grinders and Water
- Parcels to Serve Grinders Only
- Parcels to Serve Vacuum Only (Rocky Point)
- Parcels to Serve Vacuum and Water
- Units needing Vacuum Only

Prepared by: Mark L. Woodruff
Email: mwoodruff@martin.fl.us
Phone: 772-223-7982
Date: 1/6/2020
Scale: 1:22,000