



MARTIN COUNTY COMMUNITY REDEVELOPMENT AGENCY

OFFICE OF COMMUNITY DEVELOPMENT

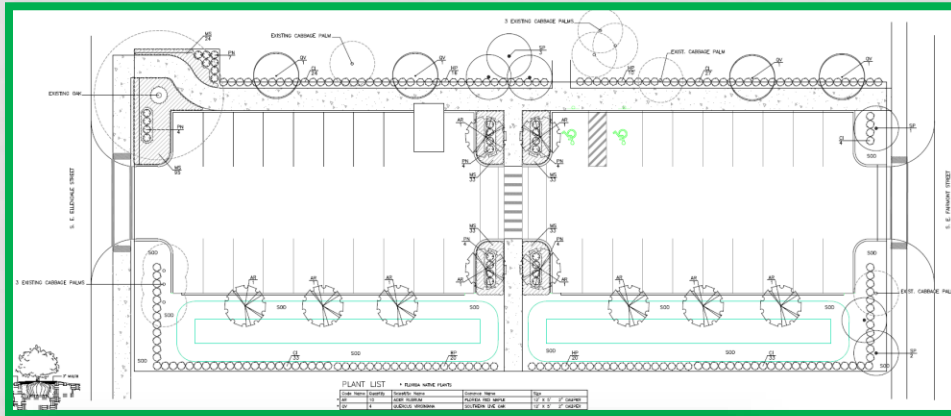
FY 2020: 3RD QUARTER REPORT

APRIL – MAY – JUNE - 2020

Golden Gate
Hobe Sound
Jensen Beach
Old Palm City
Port Salerno
Rio



GOLDEN GATE

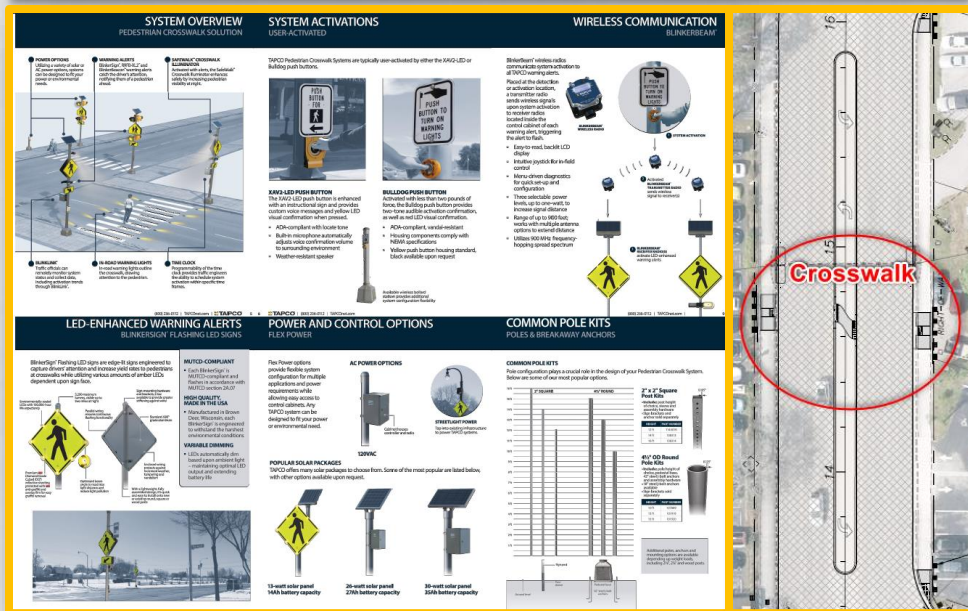


Camino Trail

- Kickoff meeting held onsite with landscape architect, consultant, and Martin County staff.

Cassidy Center Parking

- CRA completed site design, including permitting and landscaping.
- Department of Parks and Rec will complete construction.



Dixie Highway Improvements (from Jefferson Street to Indian Street)

- Internal department review for safety features, lighting, and CRA contribution of landscaping is complete.
- 100% plans are complete and under consultant review.

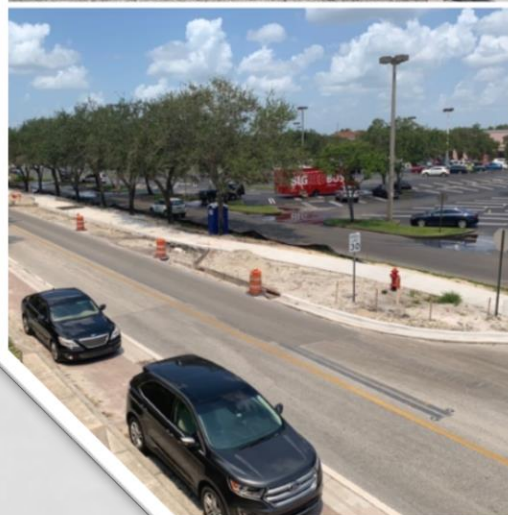
HOBE SOUND

Gomez Affordable Housing

- Exotic tree removal permit issued, contractor hired.
- Utility Permits being finalized by SMRU and FDEP.
- A bid package is being compiled, plan to bid in September.

Bridge Road Main Street

- Contractor actively working on completing the project.
- Monthly Community-Merchant Project Update Meetings have been replaced by an Email Newsletter due to COVID-19.
- Target completion date is August 31.



JENSEN BEACH

Infill Sewer

- The infrastructure is installed. 100% of properties in the Jensen Beach CRA can connect to water and sewer! Special connection rates and financing available through October 27, 2020.

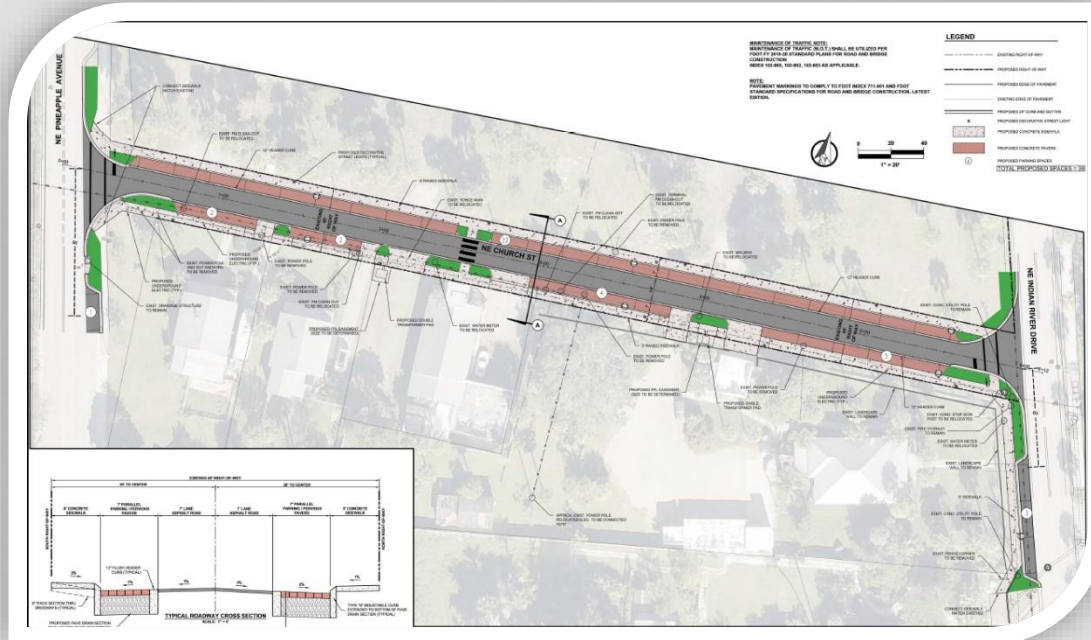


Church Street Parking Improvements

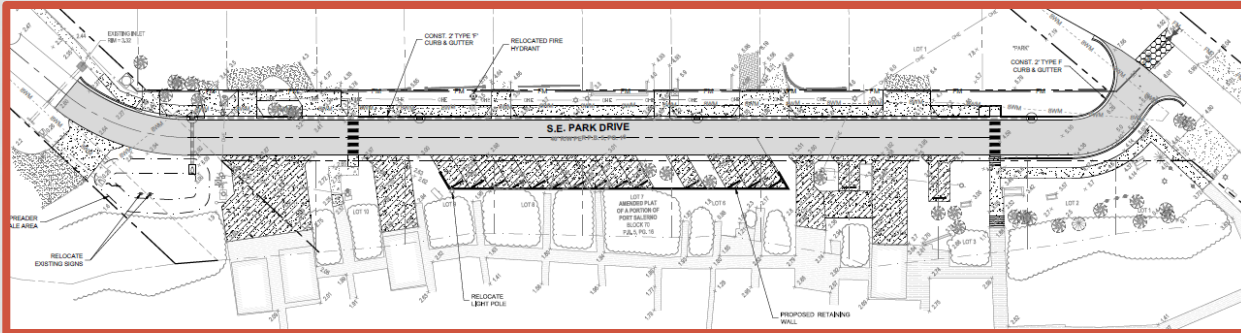
- Construction plans submitted to Public Works for Plan Review.
- Coordination continues with Property Owners and FP&L for the undergrounding of utilities.

Jensen Beach Traffic Calming

- In an effort to assist with traffic calming on Jensen Beach Blvd, additional speed limit signage has been added.

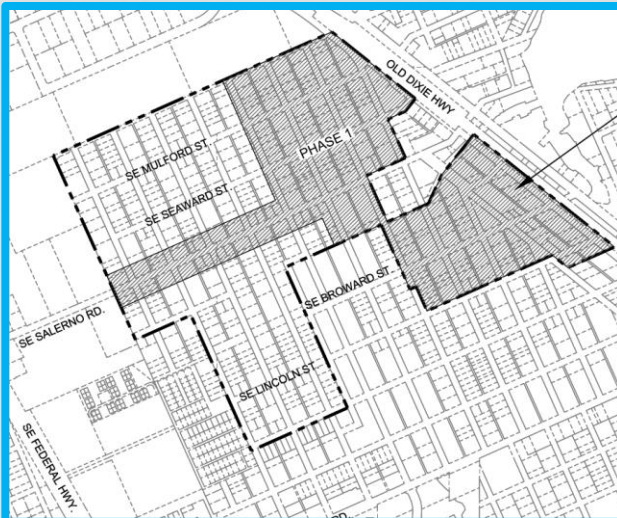


PORT SALERNO



Parking Innovations (Park Drive)

- Conceptual designs are complete.
- Staff met with the consultant for NAC presentation review.



Water Installation Phase 1

- Designs are finalized with project ready to go out for bid.



Water Installation Phase 2

- 30% designs complete. Ready for internal review with CRA, Public Utilities, and the consultant.

OLD PALM CITY

ripple Eco-Art Project

- Second NEA grant complete, permits approved, and construction documents ready.

Mapp Road Town Center

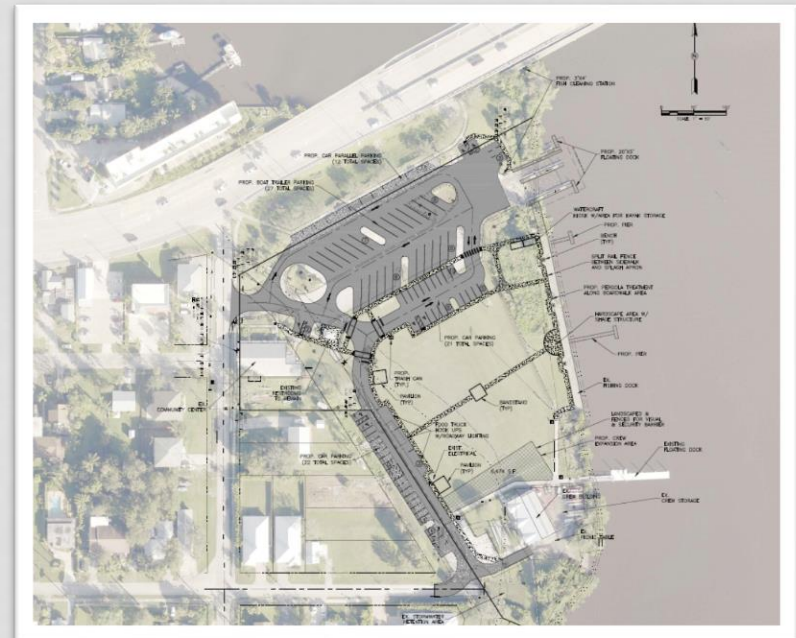
- Sunshine Land Design was chosen from 3 bids received.
- Notice to Proceed: April 27.
- Drainage and sidewalk installation begun.

Palm City Place

- Engineering design submitted.
- Design and construction of sidewalk around the Fire Station STA begun.
- Received SFWMD Permit Modification.

Charlie Leighton Park

- Internal review complete.
- Applied for \$400,000 FDEP Land and Water Conservation Fund grant.



RIO

Infill Sewer

- 3 phase project that will provide the Rio CRA with 100% sewer availability with completion expected by the end of 2021.
- MC Utilities is designing, engineering, and permitting.

Sidewalk Connections

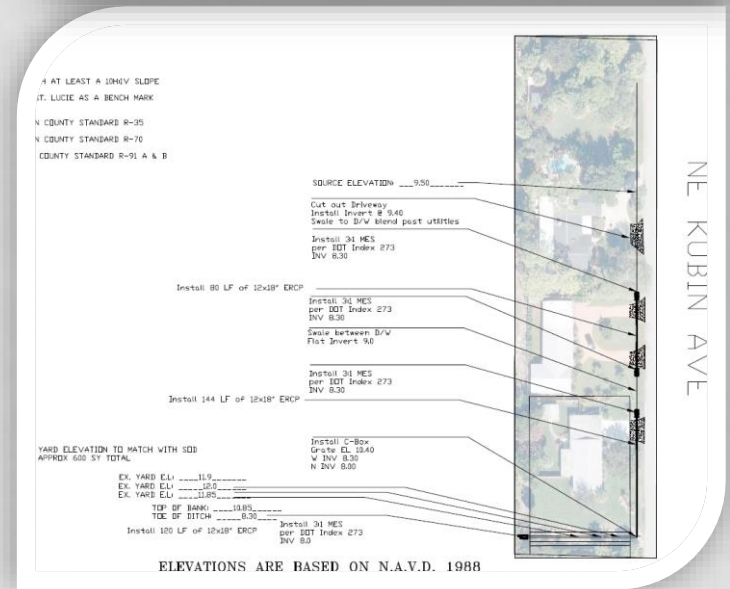
- Sidewalk and crosswalks nearly complete north of Dixie Hwy, east and west of Martin Avenue.

Rio Stormwater/Flood Control

- Received drainage easement to connect Kubin Ave to the back ditch.
- Public Works designed drainage improvements for Kubin Ave., and are working on Ne Dixie Hwy between NE Darlich Ave and NE Silvia Ave.

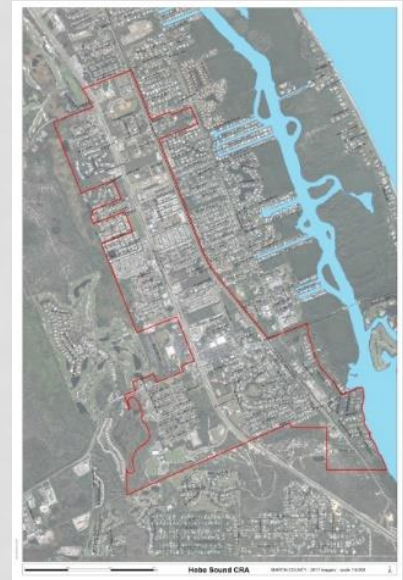
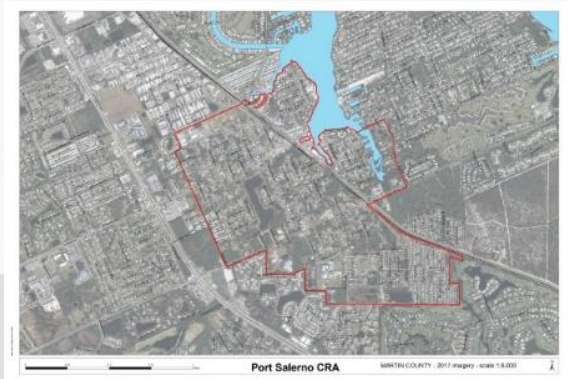
Property Acquisition

- Signed contract for purchasing 1275 NE Dixie Hwy, ordered environmental assessment and survey.
- Sent letters and working with property owners for additional key property acquisition.



CRA WIDE

- Communicated with businesses in all CRAs during COVID-19.
- Partnered with the Office of Tourism to produce a business directory.
- Created monthly newsletters for each CRA sent via constant contact.
- June 13, 2020, Article 12, Division 4 LDR for the Old Palm City CRA became effective.
- June 16, 2020, the BOCC adopted Article 12, Division 5 LDR for the Hobe Sound CRA. It will become effective 30 days after the approval date.



3RD QUARTER PERMITS

3rd Quarter FY 2019

- 364 Total CRA Permits Issued
- 300 Residential
 - \$7,620,844.13
- 64 Non-Residential
 - \$5,422,217
- Value: \$13,043,061.13

-
- Martin County Totals
 - 9,182 Permits
 - \$210,155,702.57 Value

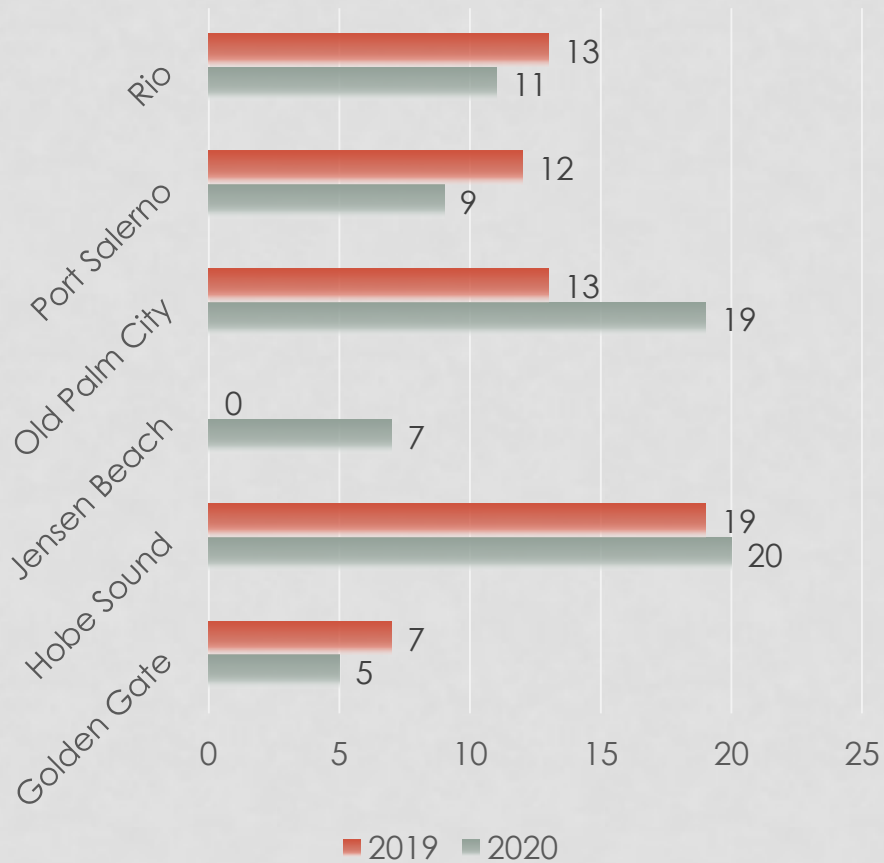
3rd Quarter FY 2020

- 326 Total CRA Permits Issued
- 255 Residential
 - \$7,468,591.75
- 71 Non-Residential
 - \$6,823,058.50
- Value: \$14,291,650.25

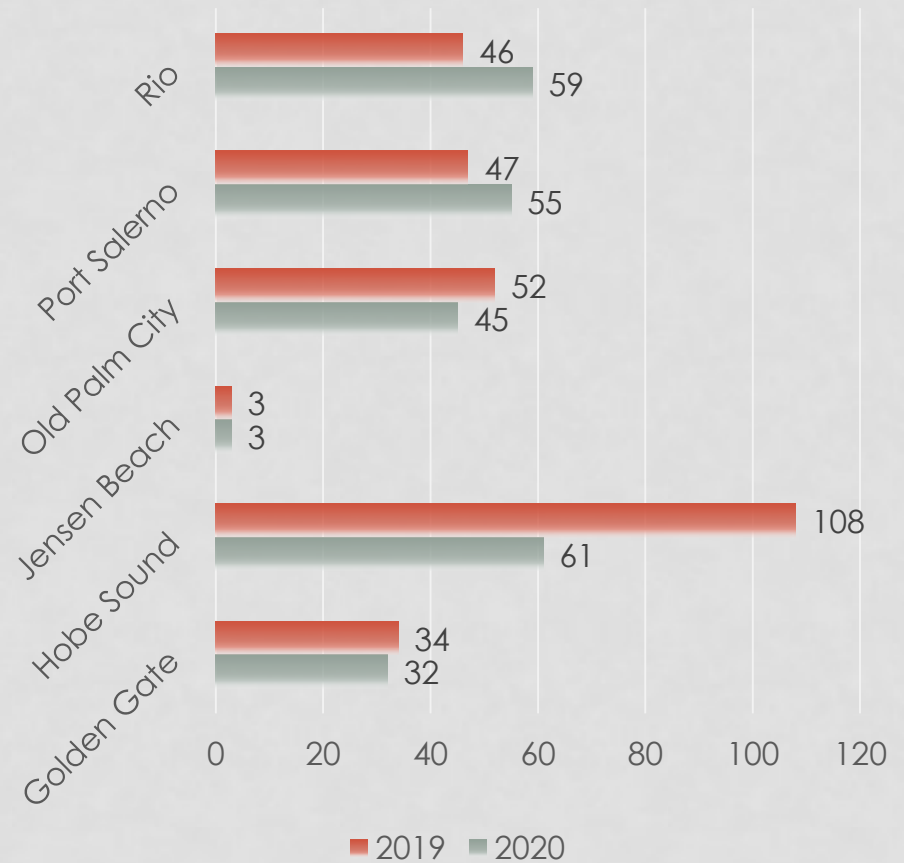
-
- Martin County Totals
 - 5,873 Permits
 - \$119,586,927.30

3RD QUARTER CRA PERMIT TOTALS

COMMERCIAL PERMITS

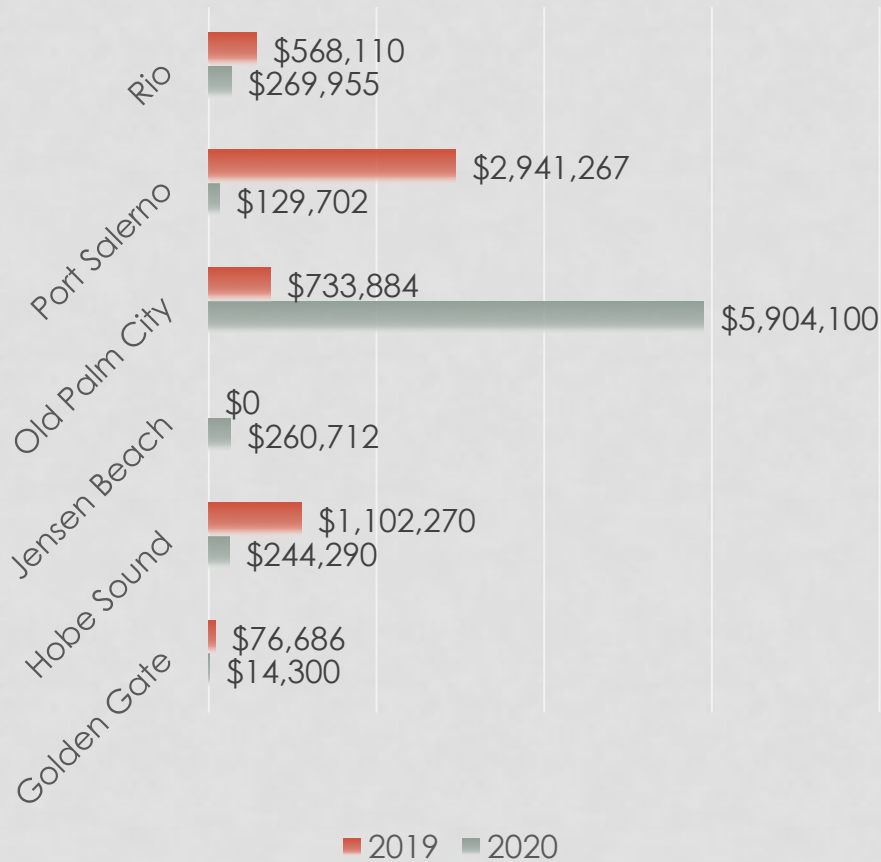


RESIDENTIAL PERMITS

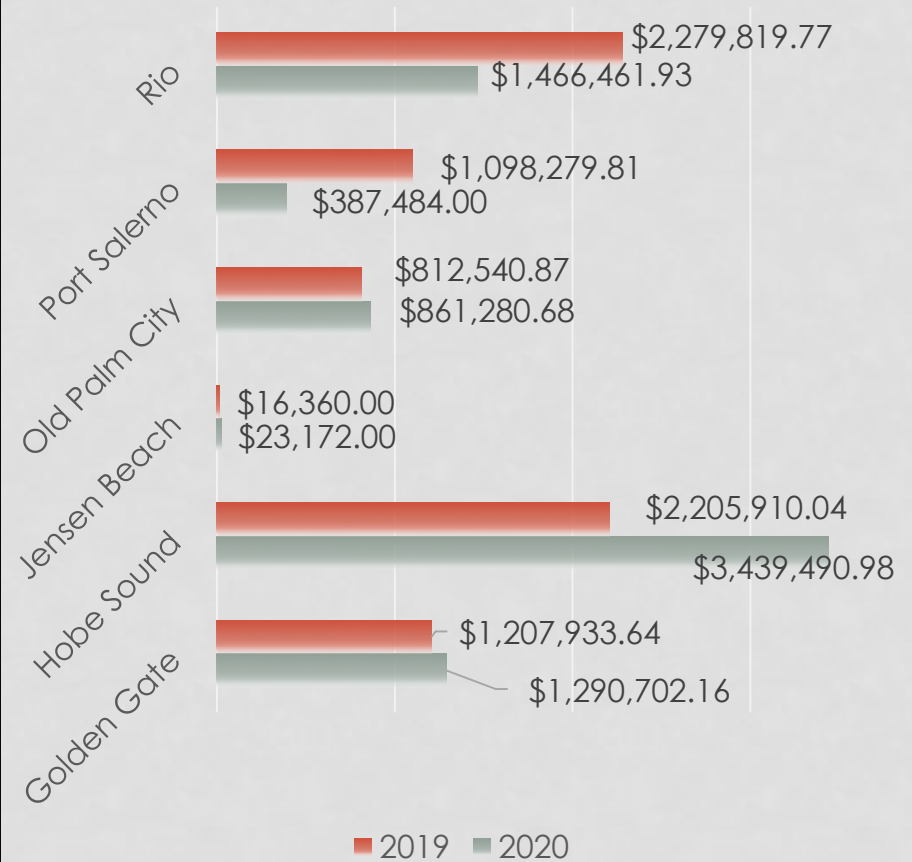


3RD QUARTER CRA PERMIT VALUES

COMMERCIAL PERMITS

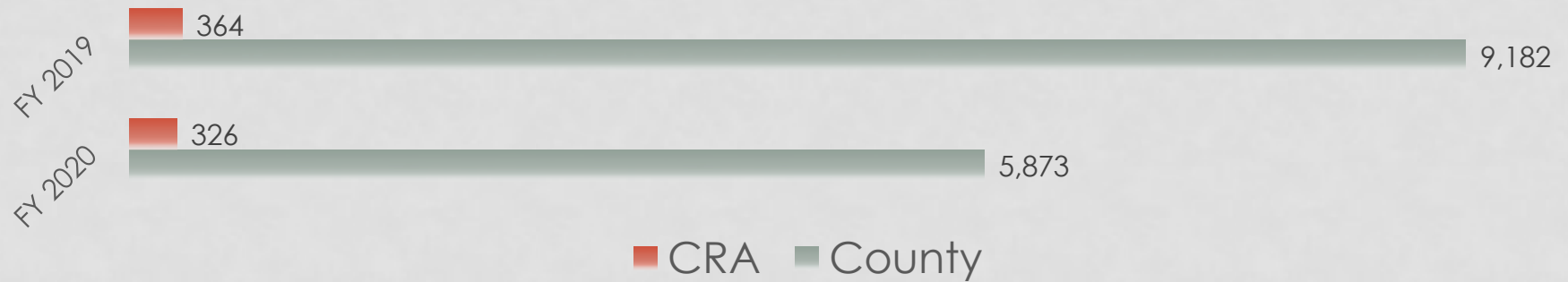


RESIDENTIAL PERMITS

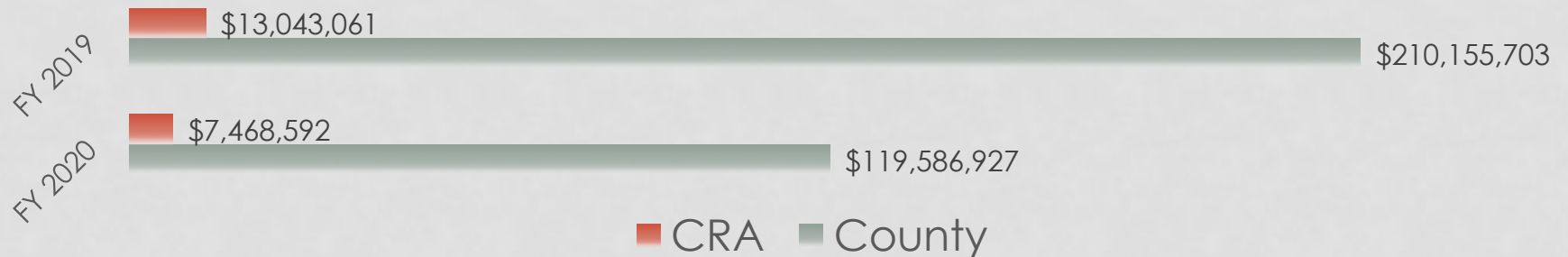


3RD QUARTER PERMITS CRA VS. COUNTY

PERMIT TOTALS



PERMIT VALUES



THANK YOU!!!



MARTIN COUNTY
Community Redevelopment Agency

